



BRIGADE

Building Positive Experiences



**True
charm
rises
above the
noise**



**Be surrounded by a lifestyle
full of South Bengaluru charm.**

BRIGADE
N A N D A
HEIGHTS
PADMANABHANAGAR



Artist's impression. Materials shown are only indicative. The final product may differ based on availability.



Giving **Padmanabhanagar** *a picturesque view*

Welcome to **Brigade Nanda Heights** at Padmanabhanagar. An elegantly designed, residential high-rise, towering 23 floors yet with the carefully curated amenities that make space to celebrate life's simple pleasures.

The unique design with vertical fins accentuates the height of the building and provides breathtaking views.

The awe-inspiring tower consists of 3 & 4-bedroom apartments that invite you to discover the real highs of life.



LOCATION MAP



Social Infrastructure:

- 10 mins. to Brigade Software Park
- 10 mins. to JP Nagar Metro Station
- Deccan International School is located just opposite to the project
- Brigade School and other schools of repute are in close proximity
- Sagar and Motherhood, among other hospitals, are in close proximity
- Central, Vega City Mall, Gopalan Arcade and Gopalan Innovation Mall are in close proximity

Entertainment Attractions/Famous Eateries:

- 15 mins. to Bugle Rock
- 15 mins. to Gandhi Bazaar
- 15 mins. to Vidyarthi Bhavan
- 10 mins. to Brahmins Café

Seamlessly connected *to the city*



MASTER PLAN



Legends:

- | | |
|---------------------------|----------------------------------|
| 1. Arrival Plaza | 12. Pergola with Creepers |
| 2. Driveway | 13. Kids' Play Area |
| 3. Jogging Track | 14. Basketball Dribbling Court |
| 4. Waiting Area | 15. Skating Rink |
| 5. Visitor's Parking | 16. Elders Chitchat Corner |
| 6. Car Parking | 17. Swimming Pool |
| 7. Stepping Stone Walkway | 18. Kids' Pool |
| 8. Drop off Plaza | 19. Pool Deck |
| 9. Drop off Feature | 20. Pool Change Rooms |
| 10. Yoga Lawn | 21. Cricket Practice Net |
| 11. Outdoor Gym | 22. Secondary Entry / Exit Plaza |



The information depicted herein viz., master plans, floor plans, furniture layout, fittings, illustrations, specifications, designs, dimensions, rendered views, colours, amenities and facilities etc., are subject to change without notifications as may be required by the relevant authorities or the Developer's architect, and cannot form part of an offer or contract. Whilst every care is taken in providing this information, the Developer cannot be held liable for variations. All illustrations and pictures are artist's impression only. The information is subject to variations, additions, deletions, substitutions and modifications as may be recommended by the company's architect and/or the relevant approving authorities. The Developer is wholly exempt from any liability on account of any claim in this regard. (1 square metre = 10.764 square feet). E & OE. All dimensions and calculations are done in metric system (M/Sq.m), and imperial system (FV/Sq.ft) shown is for reference only. All dimensions indicated in the drawing are from unfinished surfaces, excluding plaster thickness and tile thickness.

A Holistic approach to lifestyle

Nanda Heights has been created with the most desirable set of amenities so you and your family can enjoy some quality time, every time. The landscape is designed to bring beautiful elements of nature closer to your home.

The clubhouse on the 22nd & 23rd floor accommodates a range of sporting and fitness facilities making your health goals a breeze to reach. Count on our multi-purpose hall to make every event an exceptional experience. Refuge terraces give you an extended space for cosy family gatherings.

The pool located on the ground floor is the perfect summer's delight. It keeps the scorching sun at bay so you can relax by the poolside, whenever you want.

The contemporary entrance lobby gives you a vision of the comfort of your future home.



Indoor Activity Area



Multi-purpose Hall



Table Tennis



Pool Table



Cricket Practice Net



Swimming Pool



Jogging Track

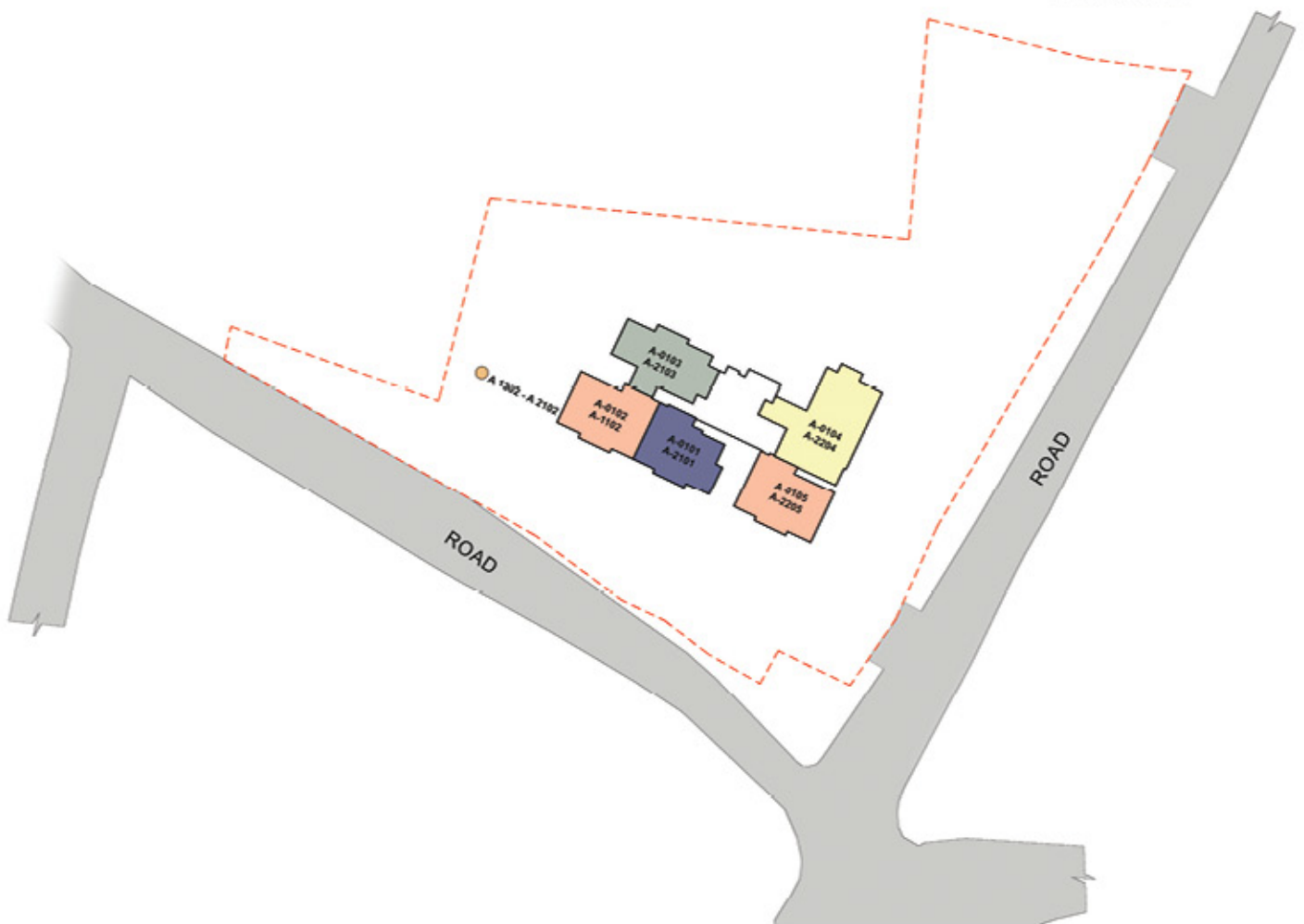
NUMBERING PLAN

LEGEND

	TYPE - A	(3B+2T)	1498 Sq.ft (1 st - 21 st Floor)
	TYPE - B	(3B+3T)	1587 Sq.ft (1 st - 11 th Floor • 1 st - 22 nd Floor)
	TYPE - B1	(3B+2T)	1495 Sq.ft (13 th - 21 st Floor)
	TYPE - C	(3B+3T)	1581 Sq.ft (1 st - 21 st Floor)
	TYPE - D	(4B+4T)	2356 Sq.ft (1 st - 22 nd Floor)



Not to scale





FLOOR
Plans



BLOCK - A

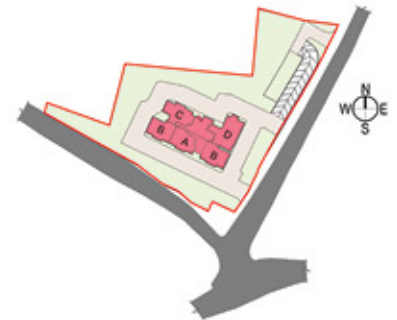
1st Floor

Type - A (3B+2T) 1498 Sq.ft.

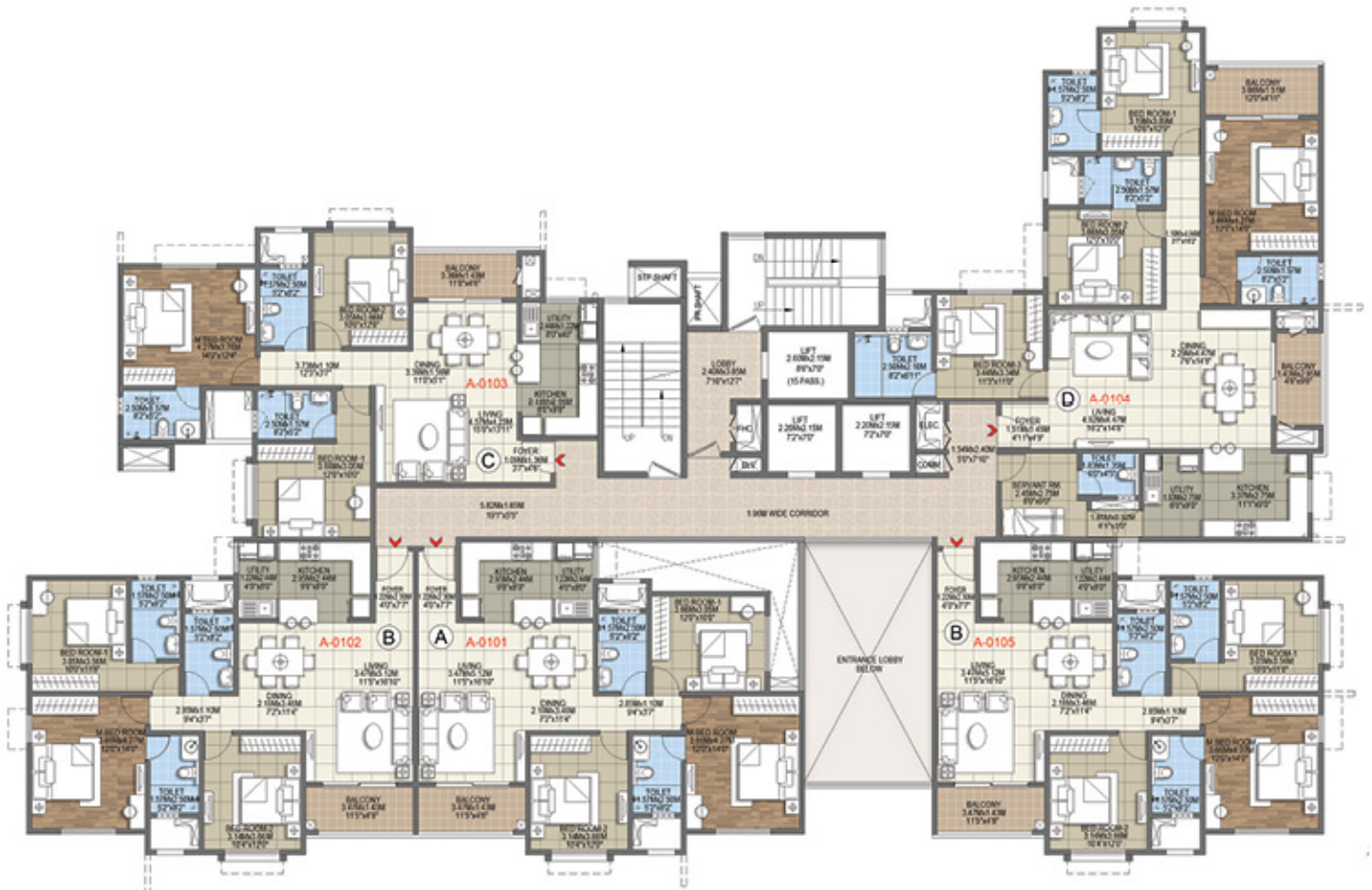
Type - B (3B+3T) 1587 Sq.ft.

Type - C (3B+3T) 1581 Sq.ft.

Type - D (4B+4T) 2356 Sq.ft.



KEY PLAN



The information depicted herein viz., master plans, floor plans, furniture layout, fittings, illustrations, specifications, designs, dimensions, rendered views, colours, amenities and facilities etc., are subject to change without notifications as may be required by the relevant authorities or the Developer's architect, and cannot form part of an offer or contract. Whilst every care is taken in providing this information, the Developer cannot be held liable for variations. All illustrations and pictures are artist's impression only. The information is subject to variations, additions, deletions, substitutions and modifications as may be recommended by the company's architect and/or the relevant approving authorities. The Developer is wholly exempt from any liability on account of any claim in this regard. (1 square metre = 10.764 square feet). E & OE. All dimensions and calculations are done in metric system (M/Sq.m), and imperial system (FV/Sq.ft) shown is for reference only. All dimensions indicated in the drawing are from unfinished surfaces, excluding plaster thickness and tile thickness.



BLOCK - A

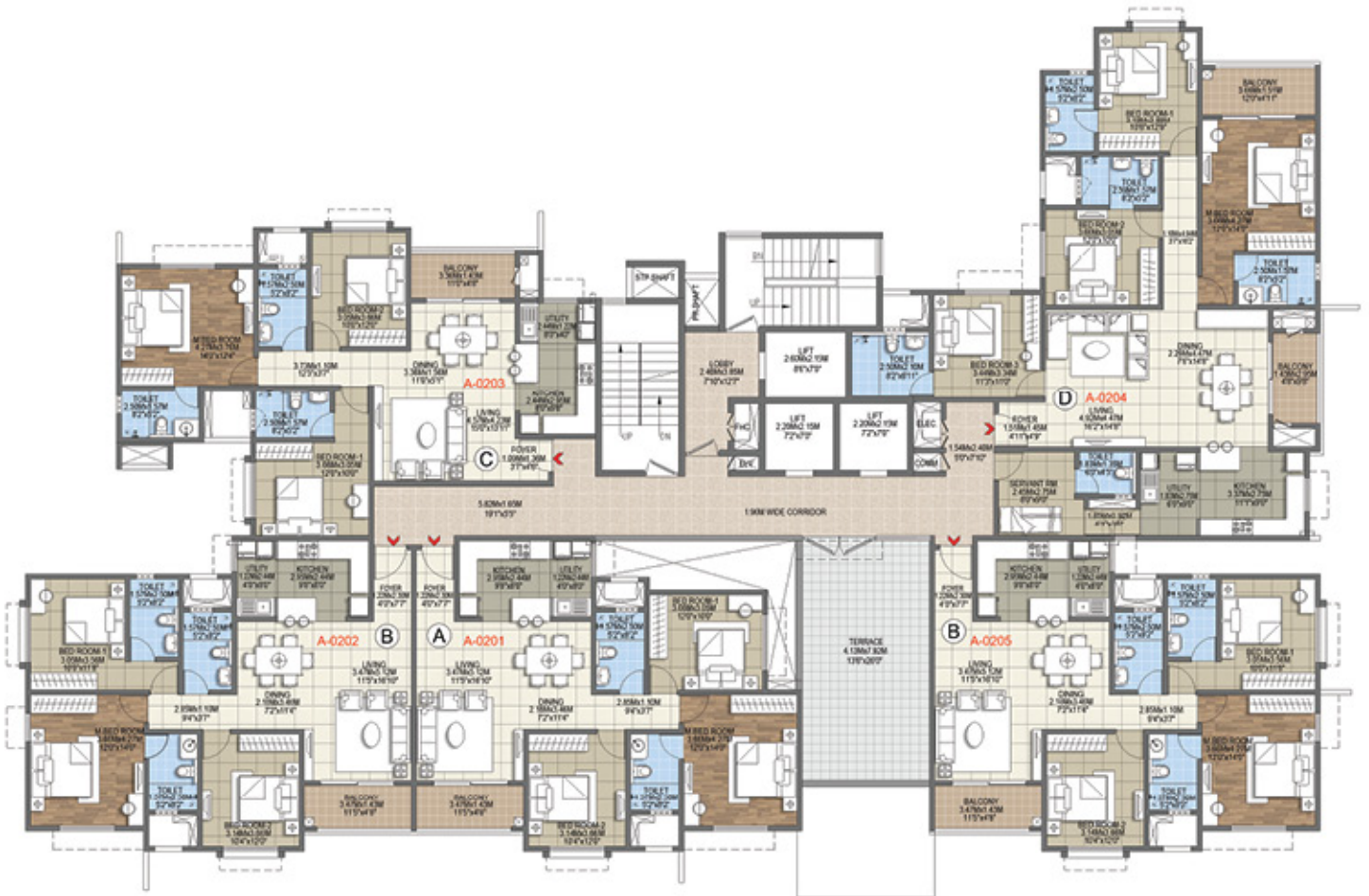
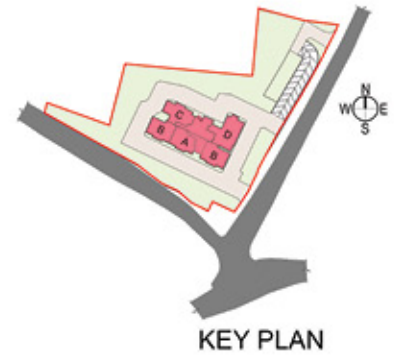
2nd Floor

Type - A (3B+2T) 1498 Sq.ft.

Type - B (3B+3T) 1587 Sq.ft.

Type - C (3B+3T) 1581 Sq.ft.

Type - D (4B+4T) 2356 Sq.ft.



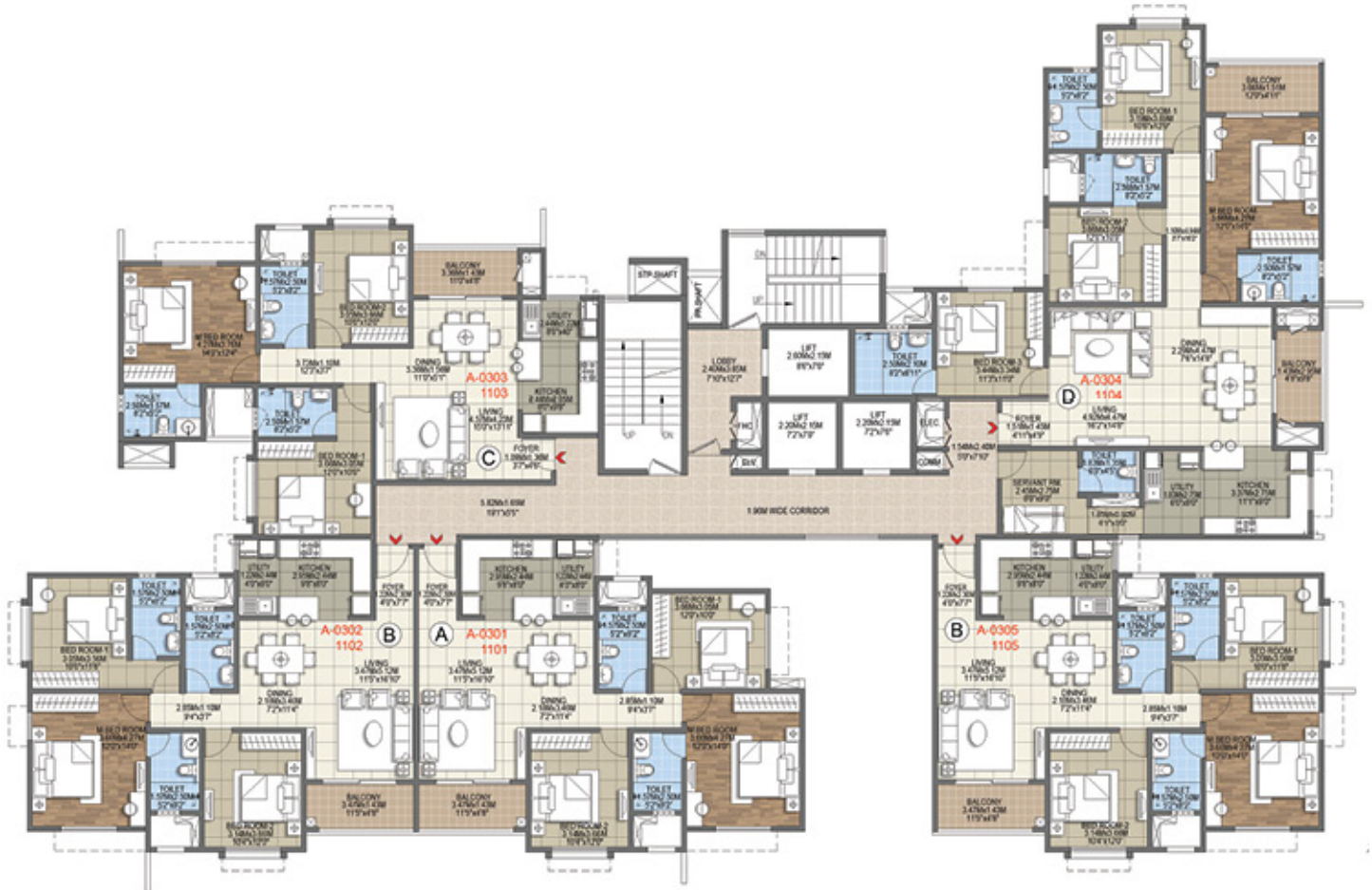
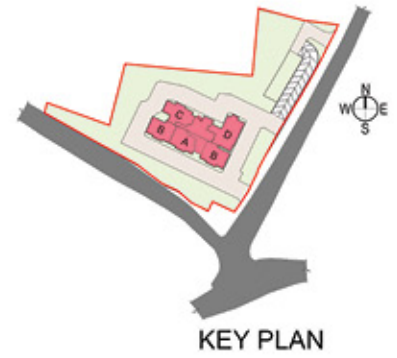
The information depicted herein viz., master plans, floor plans, furniture layout, fittings, illustrations, specifications, designs, dimensions, rendered views, colours, amenities and facilities etc., are subject to change without notifications as may be required by the relevant authorities or the Developer's architect, and cannot form part of an offer or contract. Whilst every care is taken in providing this information, the Developer cannot be held liable for variations. All illustrations and pictures are artist's impression only. The information is subject to variations, additions, deletions, substitutions and modifications as may be recommended by the company's architect and/or the relevant approving authorities. The Developer is wholly exempt from any liability on account of any claim in this regard. (1 square metre = 10.764 square feet). E & OE. All dimensions and calculations are done in metric system (M/Sq.m), and imperial system (FV/Sq.ft) shown is for reference only. All dimensions indicated in the drawing are from unfinished surfaces, excluding plaster thickness and tile thickness.



BLOCK - A

3rd to 11th Floor

- Type - A (3B+2T) 1498 Sq.ft.
- Type - B (3B+3T) 1587 Sq.ft.
- Type - C (3B+3T) 1581 Sq.ft.
- Type - D (4B+4T) 2356 Sq.ft.



The information depicted herein viz., master plans, floor plans, furniture layout, fittings, illustrations, specifications, designs, dimensions, rendered views, colours, amenities and facilities etc., are subject to change without notifications as may be required by the relevant authorities or the Developer's architect, and cannot form part of an offer or contract. Whilst every care is taken in providing this information, the Developer cannot be held liable for variations. All illustrations and pictures are artist's impression only. The information is subject to variations, additions, deletions, substitutions and modifications as may be recommended by the company's architect and/or the relevant approving authorities. The Developer is wholly exempt from any liability on account of any claim in this regard. (1 square metre = 10.764 square feet). E & OE. All dimensions and calculations are done in metric system (M/Sq.m), and imperial system (FV/Sq.ft) shown is for reference only. All dimensions indicated in the drawing are from unfinished surfaces, excluding plaster thickness and tile thickness.



BLOCK - A

12th Floor

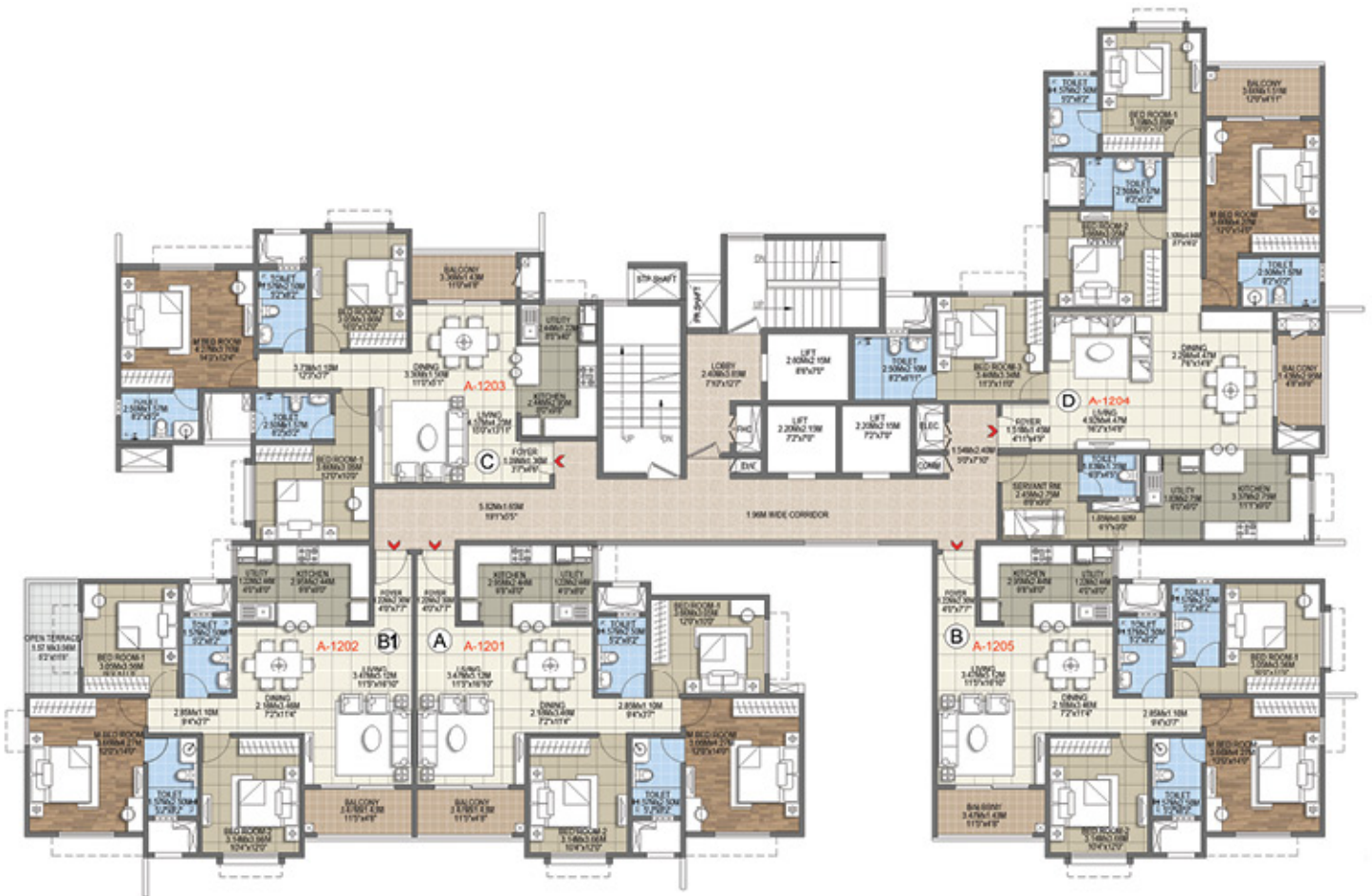
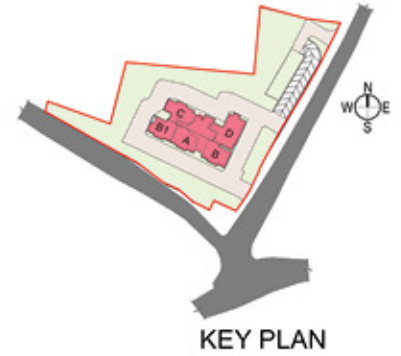
Type - A (3B+2T) 1498 Sq.ft.

Type - B (3B+3T) 1587 Sq.ft.

Type - B1 (3B+2T+Open Terrace) 1495 Sq.ft.

Type - C (3B+3T) 1581 Sq.ft.

Type - D (4B+4T) 2356 Sq.ft.



The information depicted herein viz., master plans, floor plans, furniture layout, fittings, illustrations, specifications, designs, dimensions, rendered views, colours, amenities and facilities etc., are subject to change without notifications as may be required by the relevant authorities or the Developer's architect, and cannot form part of an offer or contract. Whilst every care is taken in providing this information, the Developer cannot be held liable for variations. All illustrations and pictures are artist's impression only. The information is subject to variations, additions, deletions, substitutions and modifications as may be recommended by the company's architect and/or the relevant approving authorities. The Developer is wholly exempt from any liability on account of any claim in this regard. (1 square metre = 10.764 square feet). E & OE. All dimensions and calculations are done in metric system (M/Sq.m), and imperial system (FV/Sq.ft) shown is for reference only. All dimensions indicated in the drawing are from unfinished surfaces, excluding plaster thickness and tile thickness.



BLOCK - A

13th to 19th & 21st Floor

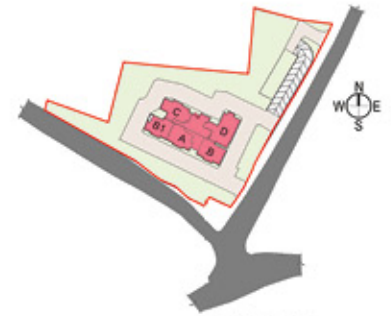
Type - A (3B+2T) 1498 Sq.ft.

Type - B (3B+3T) 1587 Sq.ft.

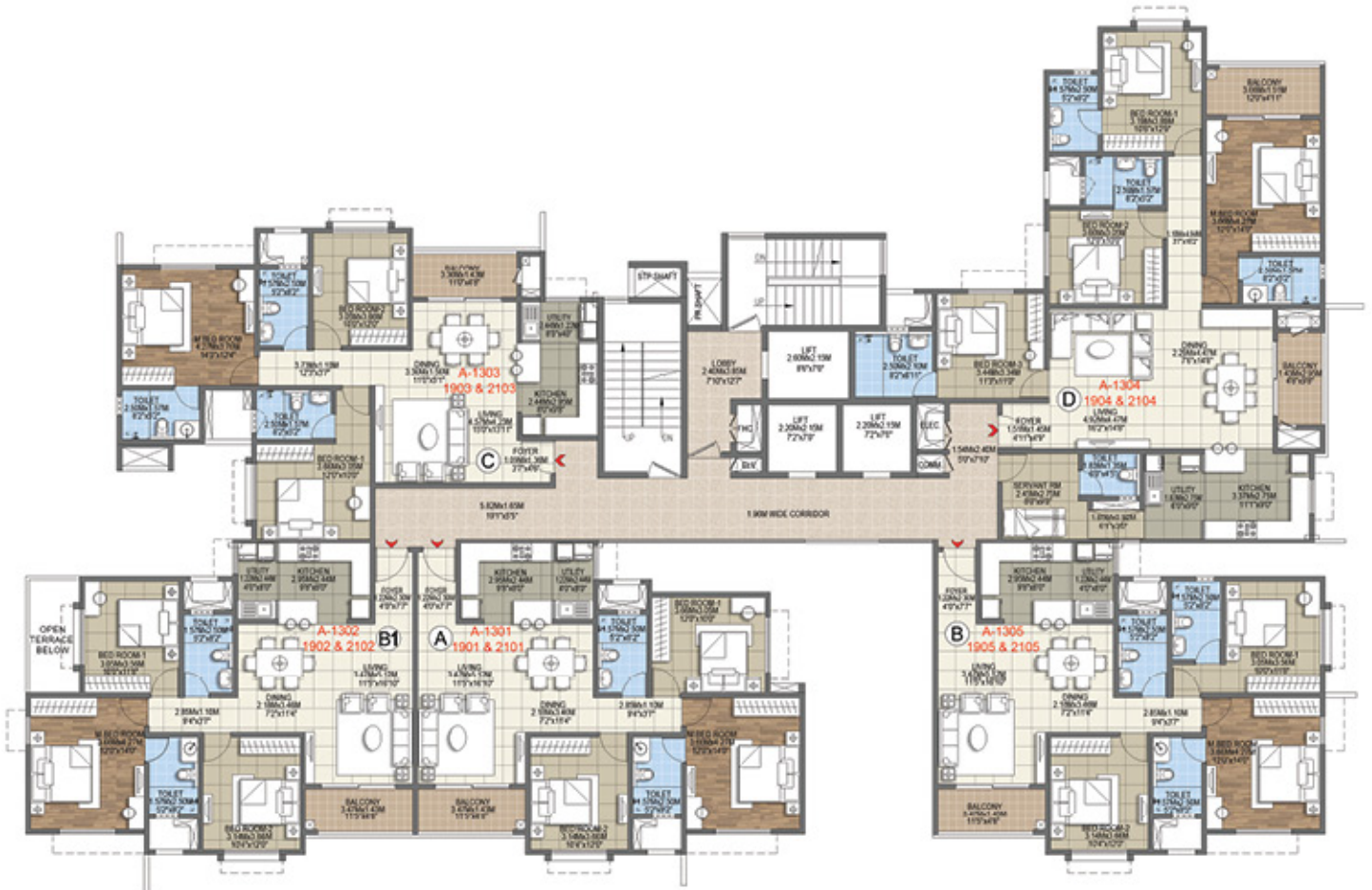
Type - B1 (3B+2T) 1495 Sq.ft.

Type - C (3B+3T) 1581 Sq.ft.

Type - D (4B+4T) 2356 Sq.ft.



KEY PLAN



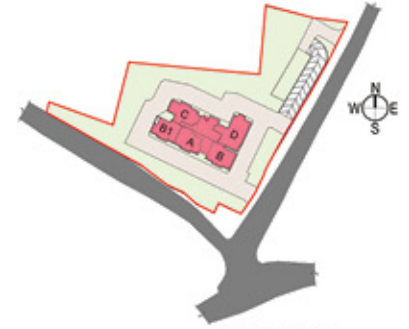
The information depicted herein viz., master plans, floor plans, furniture layout, fittings, illustrations, specifications, designs, dimensions, rendered views, colours, amenities and facilities etc., are subject to change without notifications as may be required by the relevant authorities or the Developer's architect, and cannot form part of an offer or contract. Whilst every care is taken in providing this information, the Developer cannot be held liable for variations. All illustrations and pictures are artist's impression only. The information is subject to variations, additions, deletions, substitutions and modifications as may be recommended by the company's architect and/or the relevant approving authorities. The Developer is wholly exempt from any liability on account of any claim in this regard. (1 square metre = 10.764 square feet). E & OE. All dimensions and calculations are done in metric system (M/Sq.m), and imperial system (FV/Sq.ft) shown is for reference only. All dimensions indicated in the drawing are from unfinished surfaces, excluding plaster thickness and tile thickness.



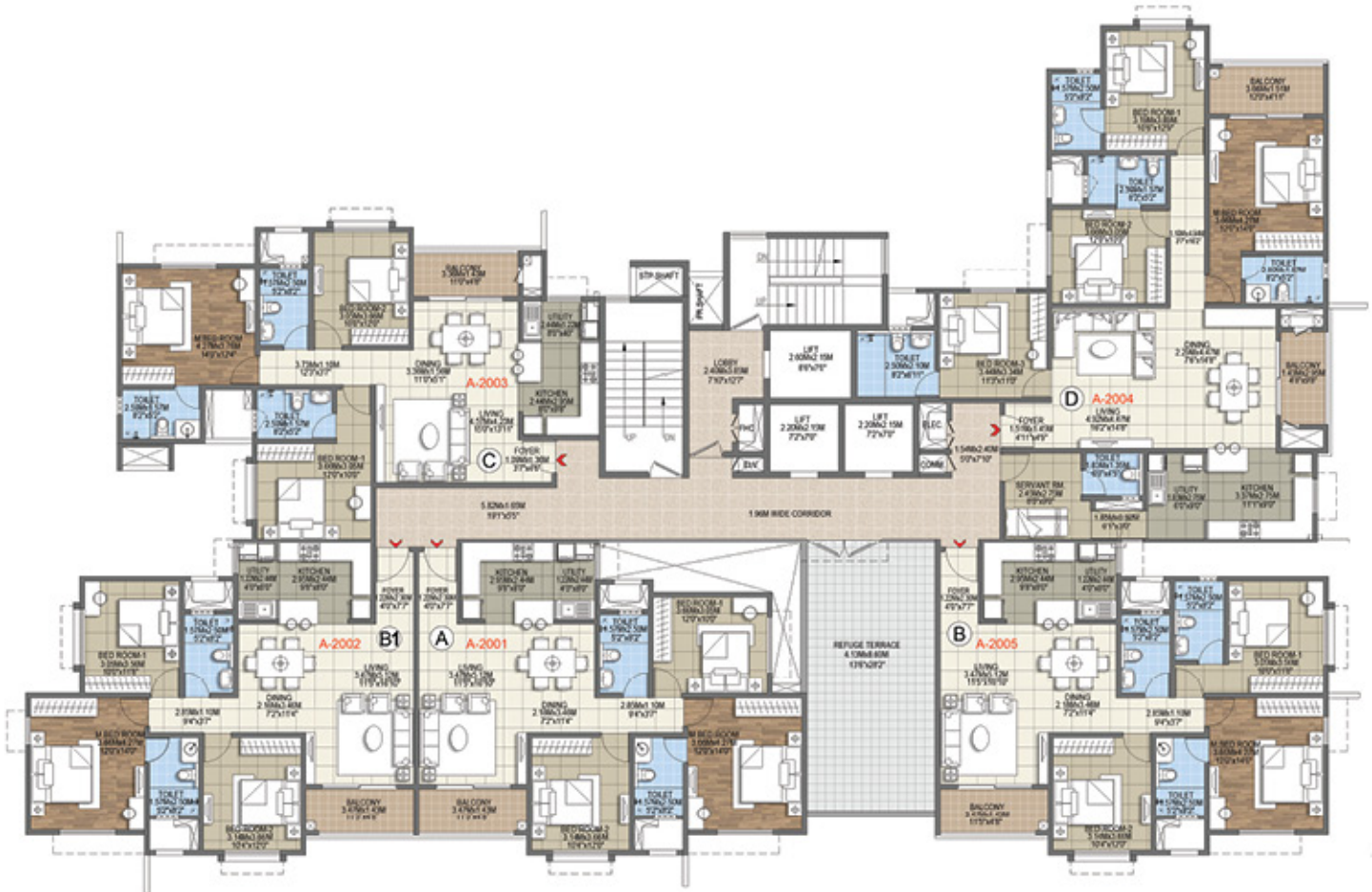
BLOCK - A

20th Floor

- Type - A (3B+2T) 1498 Sq.ft.
- Type - B (3B+3T) 1587 Sq.ft.
- Type - B1 (3B+2T) 1495 Sq.ft.
- Type - C (3B+3T) 1581 Sq.ft.
- Type - D (4B+4T) 2356 Sq.ft.



KEY PLAN



The information depicted herein viz., master plans, floor plans, furniture layout, fittings, illustrations, specifications, designs, dimensions, rendered views, colours, amenities and facilities etc., are subject to change without notifications as may be required by the relevant authorities or the Developer's architect, and cannot form part of an offer or contract. Whilst every care is taken in providing this information, the Developer cannot be held liable for variations. All illustrations and pictures are artist's impression only. The information is subject to variations, additions, deletions, substitutions and modifications as may be recommended by the company's architect and/or the relevant approving authorities. The Developer is wholly exempt from any liability on account of any claim in this regard. (1 square metre = 10.764 square feet). E & OE. All dimensions and calculations are done in metric system (M/Sq.m), and imperial system (FV/Sq.ft) shown is for reference only. All dimensions indicated in the drawing are from unfinished surfaces, excluding plaster thickness and tile thickness.

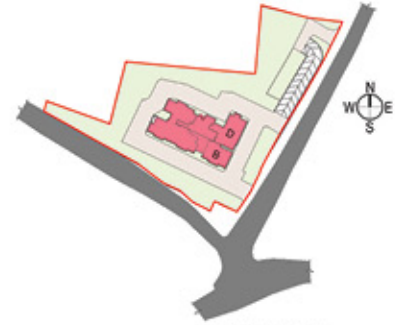


BLOCK - A

22nd Floor

Type - B (3B+3T) 1587 Sq.ft.

Type - D (4B+4T) 2356 Sq.ft.



KEY PLAN

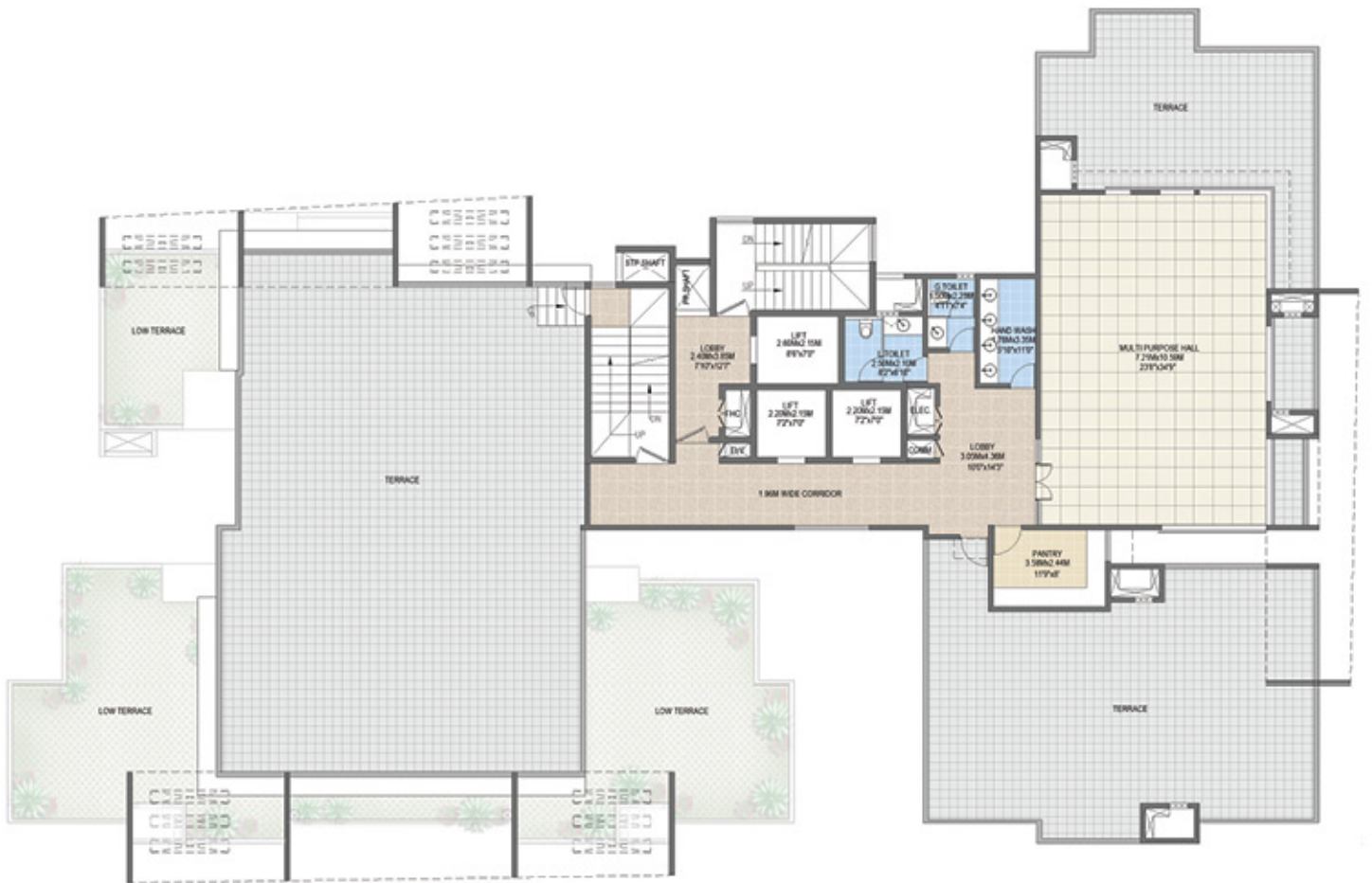


The information depicted herein viz., master plans, floor plans, furniture layout, fittings, illustrations, specifications, designs, dimensions, rendered views, colours, amenities and facilities etc., are subject to change without notifications as may be required by the relevant authorities or the Developer's architect, and cannot form part of an offer or contract. Whilst every care is taken in providing this information, the Developer cannot be held liable for variations. All illustrations and pictures are artist's impression only. The information is subject to variations, additions, deletions, substitutions and modifications as may be recommended by the company's architect and/or the relevant approving authorities. The Developer is wholly exempt from any liability on account of any claim in this regard. (1 square metre = 10.764 square feet). E & OE. All dimensions and calculations are done in metric system (M/Sq.m), and imperial system (FV/Sq.ft) shown is for reference only. All dimensions indicated in the drawing are from unfinished surfaces, excluding plaster thickness and tile thickness.



BLOCK - A

23rd Floor



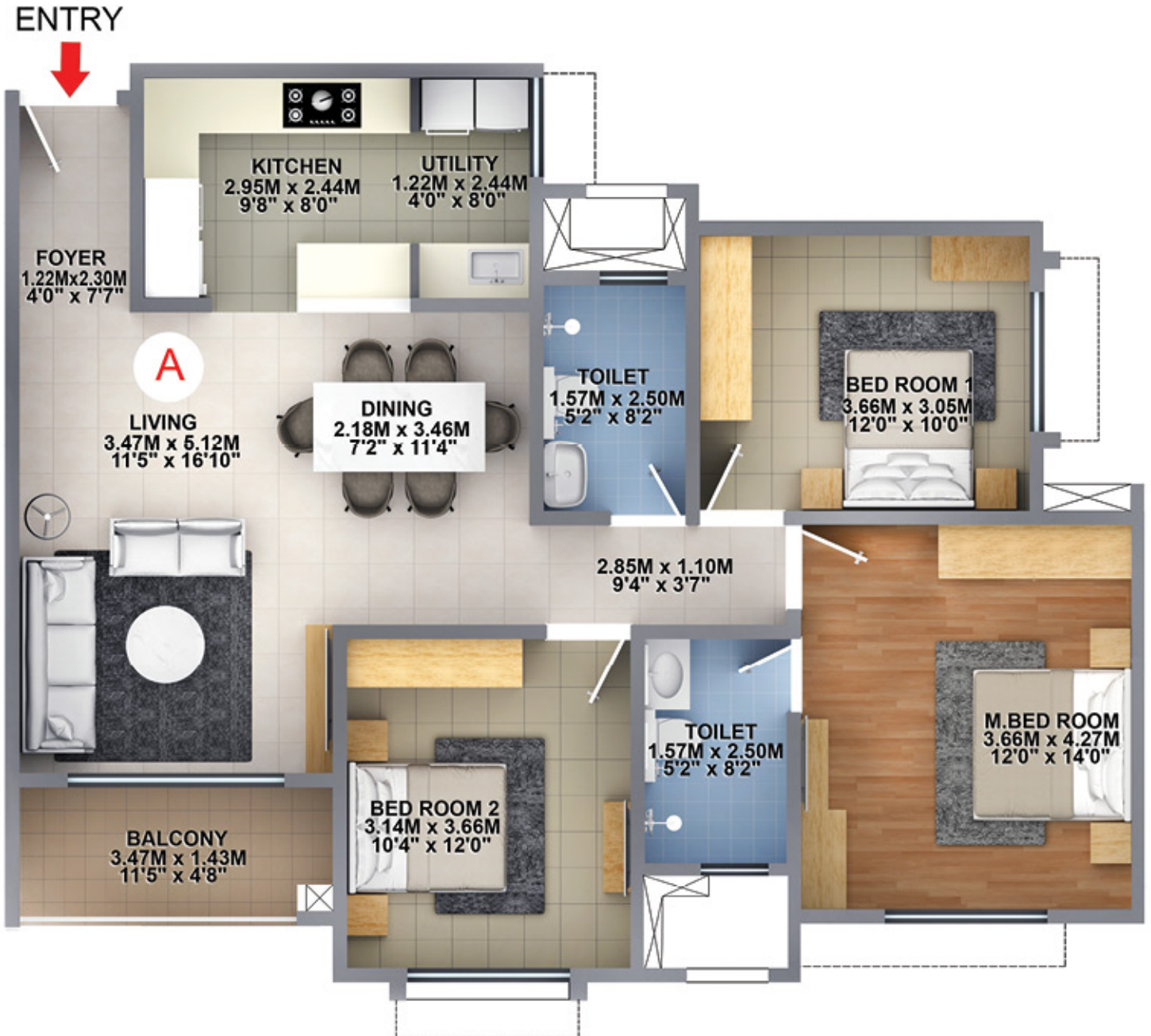
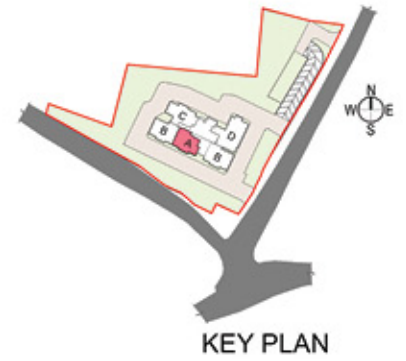
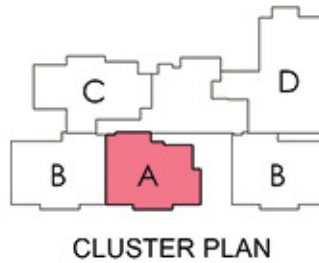
The information depicted herein viz., master plans, floor plans, furniture layout, fittings, illustrations, specifications, designs, dimensions, rendered views, colours, amenities and facilities etc., are subject to change without notifications as may be required by the relevant authorities or the Developer's architect, and cannot form part of an offer or contract. Whilst every care is taken in providing this information, the Developer cannot be held liable for variations. All illustrations and pictures are artist's impression only. The information is subject to variations, additions, deletions, substitutions and modifications as may be recommended by the company's architect and/or the relevant approving authorities. The Developer is wholly exempt from any liability on account of any claim in this regard. (1 square metre = 10.764 square feet). E & OE. All dimensions and calculations are done in metric system (M/Sq.m), and imperial system (FV/Sq.ft) shown is for reference only. All dimensions indicated in the drawing are from unfinished surfaces, excluding plaster thickness and tile thickness.



UNIT
Plans



TYPE A
3 BEDROOMS
+ 2 TOILETS



SUPER BUILT-UP AREA

1498 Sq.ft. / 139.13 Sq.m.

CARPET AREA

997 Sq.ft. / 92.58 Sq.m.

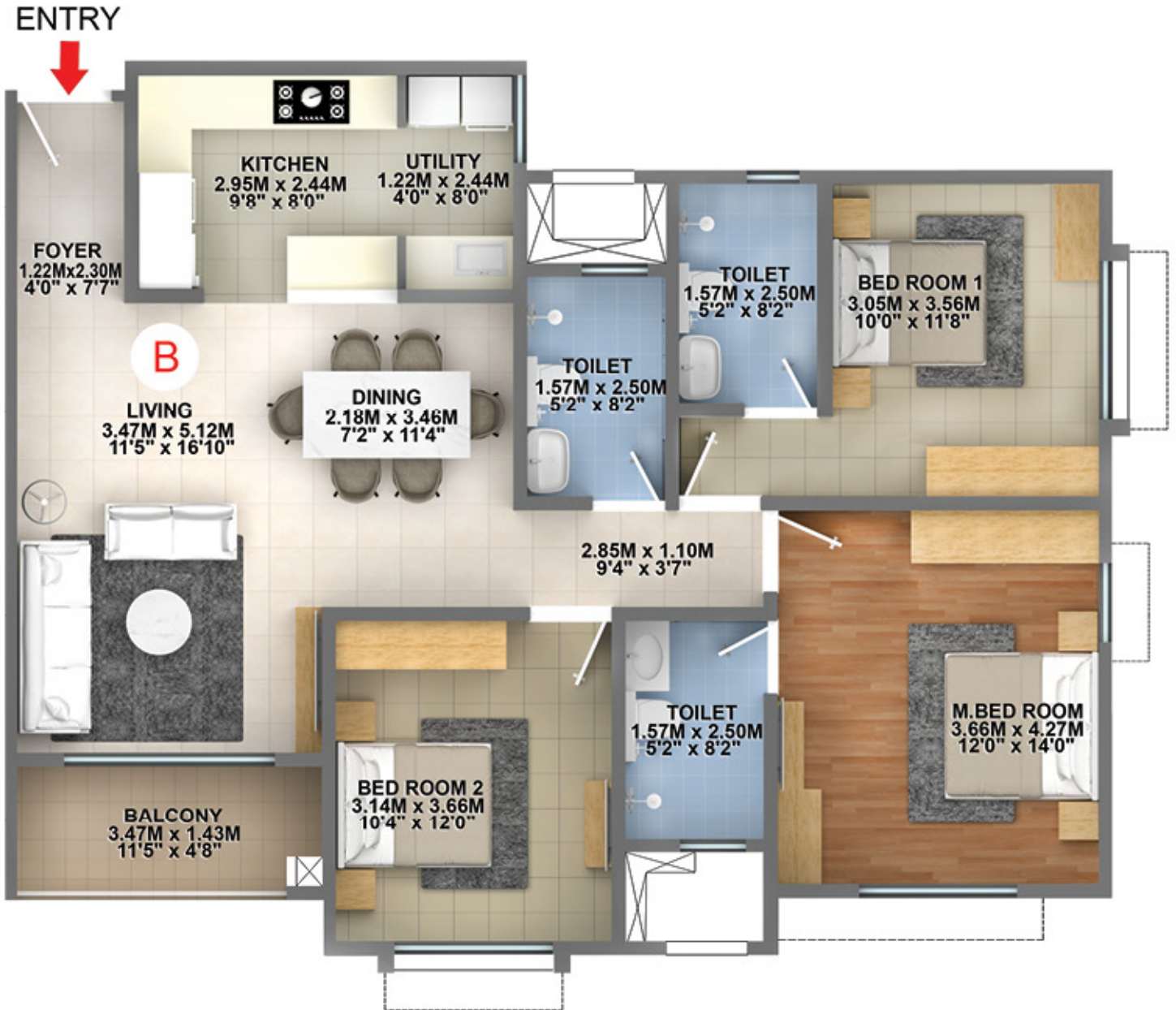
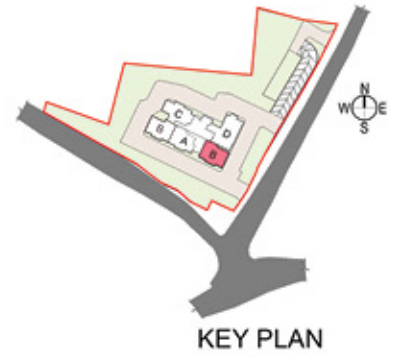
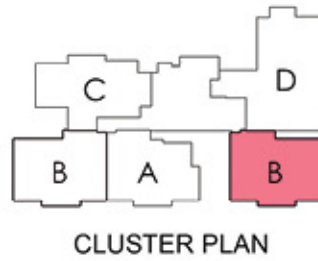
BALCONY

51 Sq.ft. / 4.77 Sq.m.

The information depicted herein viz., master plans, floor plans, furniture layout, fittings, illustrations, specifications, designs, dimensions, rendered views, colours, amenities and facilities etc., are subject to change without notifications as may be required by the relevant authorities or the Developer's architect, and cannot form part of an offer or contract. Whilst every care is taken in providing this information, the Developer cannot be held liable for variations. All illustrations and pictures are artist's impression only. The information is subject to variations, additions, deletions, substitutions and modifications as may be recommended by the company's architect and/or the relevant approving authorities. The Developer is wholly exempt from any liability on account of any claim in this regard. (1 square metre = 10.764 square feet). E & OE. All dimensions and calculations are done in metric system (M/Sq.m), and imperial system (FV/Sq.ft) shown is for reference only. All dimensions indicated in the drawing are from unfinished surfaces, excluding plaster thickness and tile thickness.



TYPE B
3 BEDROOMS
+ 3 TOILETS



SUPER BUILT-UP AREA

1587 Sq.ft. / 147.47 Sq.m.

CARPET AREA

1062 Sq.ft. / 98.62 Sq.m.

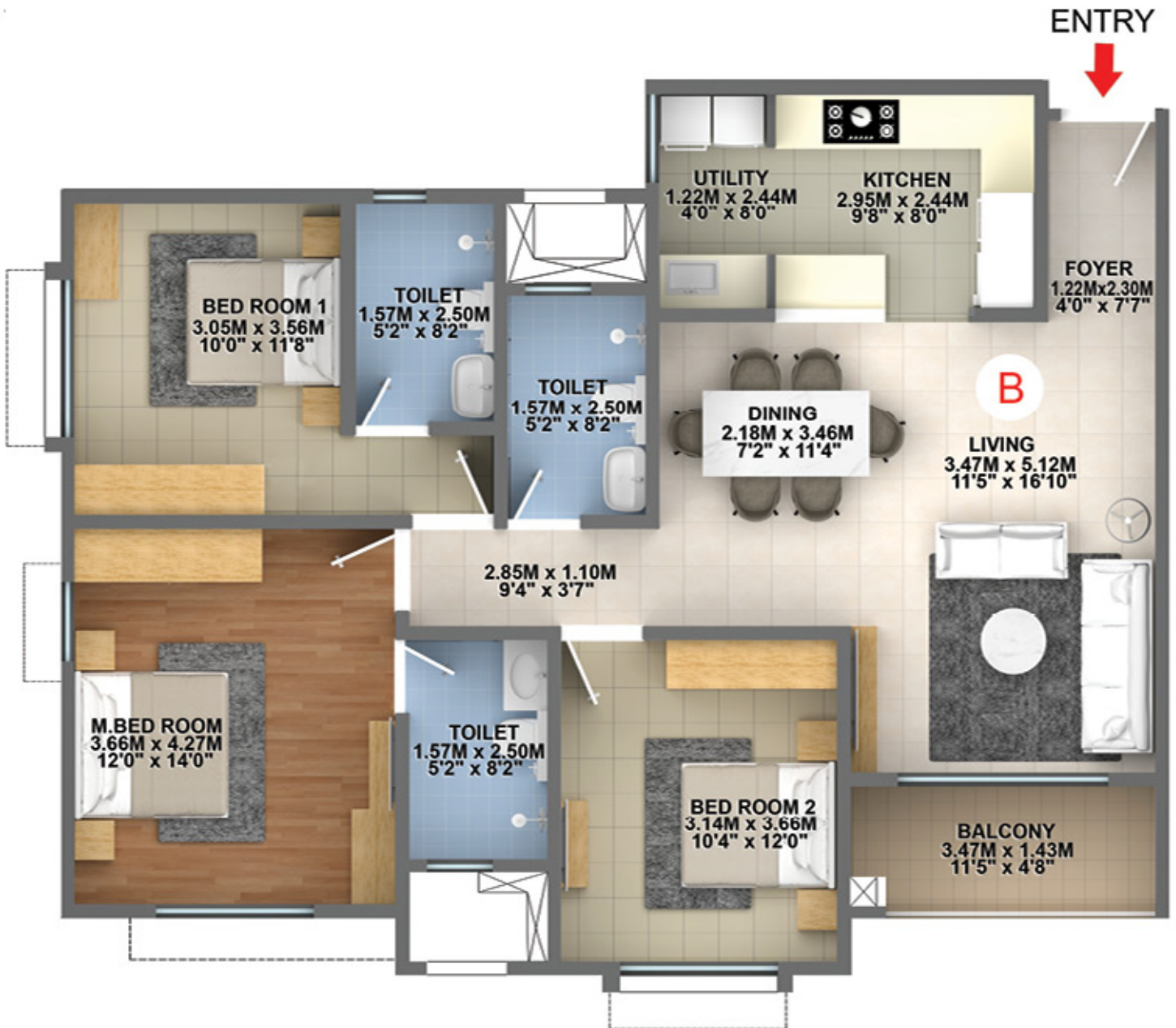
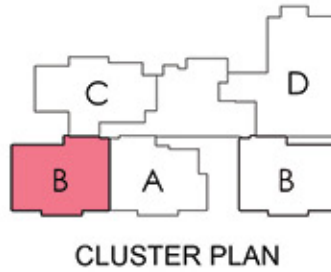
BALCONY

51 Sq.ft. / 4.77 Sq.m.

The information depicted herein viz., master plans, floor plans, furniture layout, fittings, illustrations, specifications, designs, dimensions, rendered views, colours, amenities and facilities etc., are subject to change without notifications as may be required by the relevant authorities or the Developer's architect, and cannot form part of an offer or contract. Whilst every care is taken in providing this information, the Developer cannot be held liable for variations. All illustrations and pictures are artist's impression only. The information is subject to variations, additions, deletions, substitutions and modifications as may be recommended by the company's architect and/or the relevant approving authorities. The Developer is wholly exempt from any liability on account of any claim in this regard. (1 square metre = 10.764 square feet). E & OE. All dimensions and calculations are done in metric system (M/Sq.m), and imperial system (FV/Sq.ft) shown is for reference only. All dimensions indicated in the drawing are from unfinished surfaces, excluding plaster thickness and tile thickness.



TYPE B
3 BEDROOMS
+ 3 TOILETS



SUPER BUILT-UP AREA

1587 Sq.ft. / 147.47 Sq.m.

CARPET AREA

1062 Sq.ft. / 98.62 Sq.m.

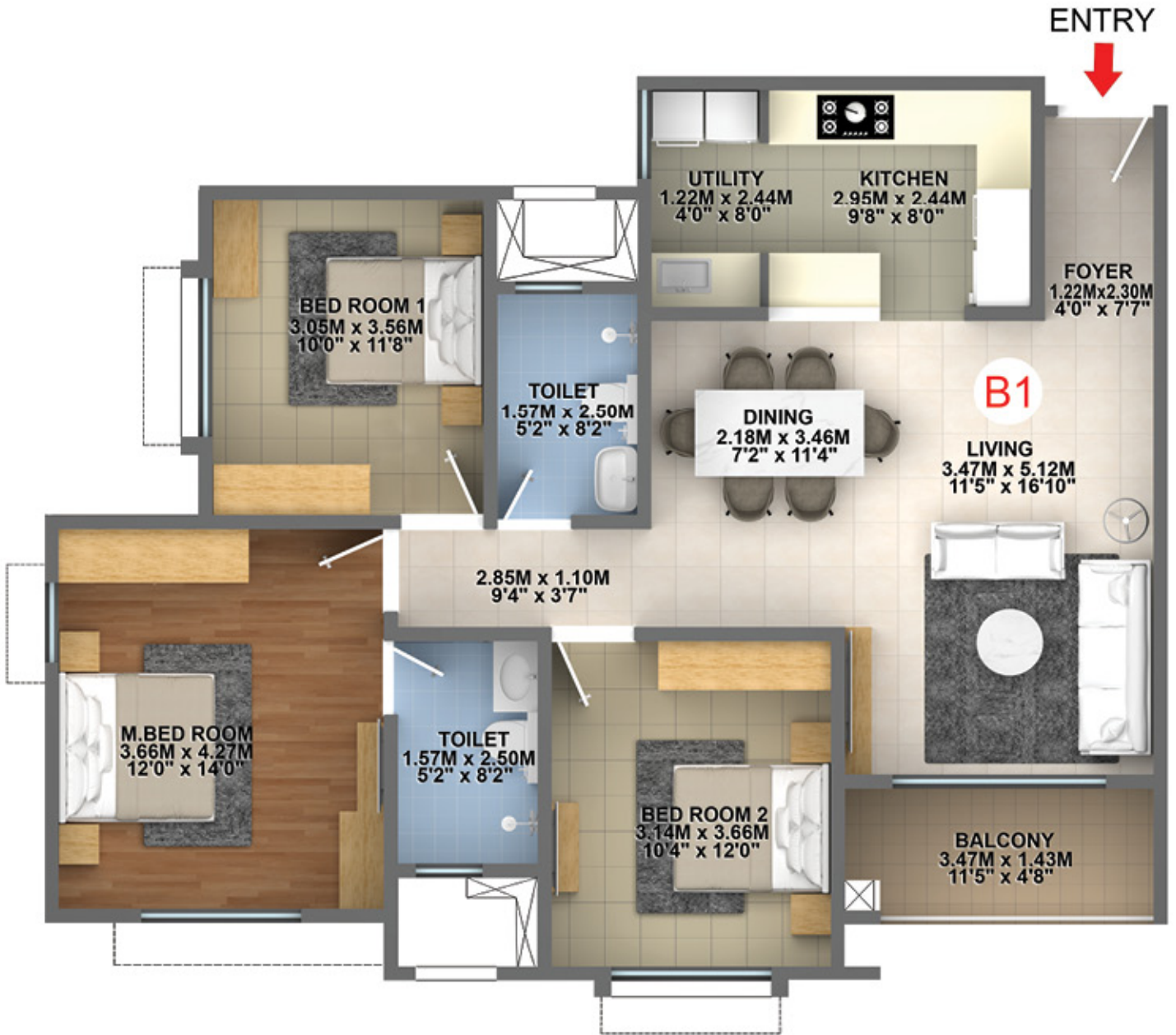
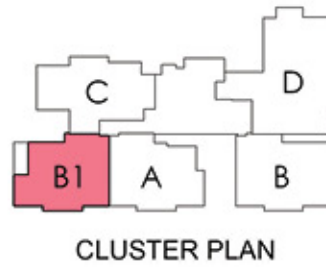
BALCONY

51 Sq.ft. / 4.77 Sq.m.

The information depicted herein viz., master plans, floor plans, furniture layout, fittings, illustrations, specifications, designs, dimensions, rendered views, colours, amenities and facilities etc., are subject to change without notifications as may be required by the relevant authorities or the Developer's architect, and cannot form part of an offer or contract. Whilst every care is taken in providing this information, the Developer cannot be held liable for variations. All illustrations and pictures are artist's impression only. The information is subject to variations, additions, deletions, substitutions and modifications as may be recommended by the company's architect and/or the relevant approving authorities. The Developer is wholly exempt from any liability on account of any claim in this regard. (1 square metre = 10.764 square feet). E & OE. All dimensions and calculations are done in metric system (M/Sq.m), and imperial system (FV/Sq.ft) shown is for reference only. All dimensions indicated in the drawing are from unfinished surfaces, excluding plaster thickness and tile thickness.



TYPE B1
3 BEDROOMS
+ 2 TOILETS



SUPER BUILT-UP AREA

1495 Sq.ft. / 138.88 Sq.m.

CARPET AREA

992 Sq.ft. / 92.18 Sq.m.

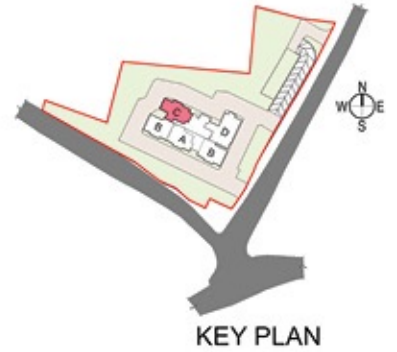
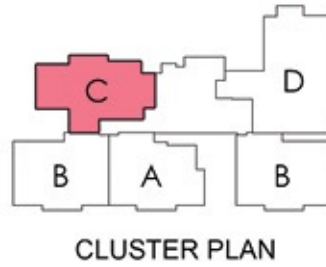
BALCONY

51 Sq.ft. / 4.77 Sq.m.

The information depicted herein viz., master plans, floor plans, furniture layout, fittings, illustrations, specifications, designs, dimensions, rendered views, colours, amenities and facilities etc., are subject to change without notifications as may be required by the relevant authorities or the Developer's architect, and cannot form part of an offer or contract. Whilst every care is taken in providing this information, the Developer cannot be held liable for variations. All illustrations and pictures are artist's impression only. The information is subject to variations, additions, deletions, substitutions and modifications as may be recommended by the company's architect and/or the relevant approving authorities. The Developer is wholly exempt from any liability on account of any claim in this regard. (1 square metre = 10.764 square feet). E & OE. All dimensions and calculations are done in metric system (M/Sq.m), and imperial system (FV/Sq.ft) shown is for reference only. All dimensions indicated in the drawing are from unfinished surfaces, excluding plaster thickness and tile thickness.



TYPE C
3 BEDROOMS
+ 3 TOILETS



SUPER BUILT-UP AREA

1581 Sq.ft. / 146.87 Sq.m.

CARPET AREA

1049 Sq.ft. / 97.49 Sq.m.

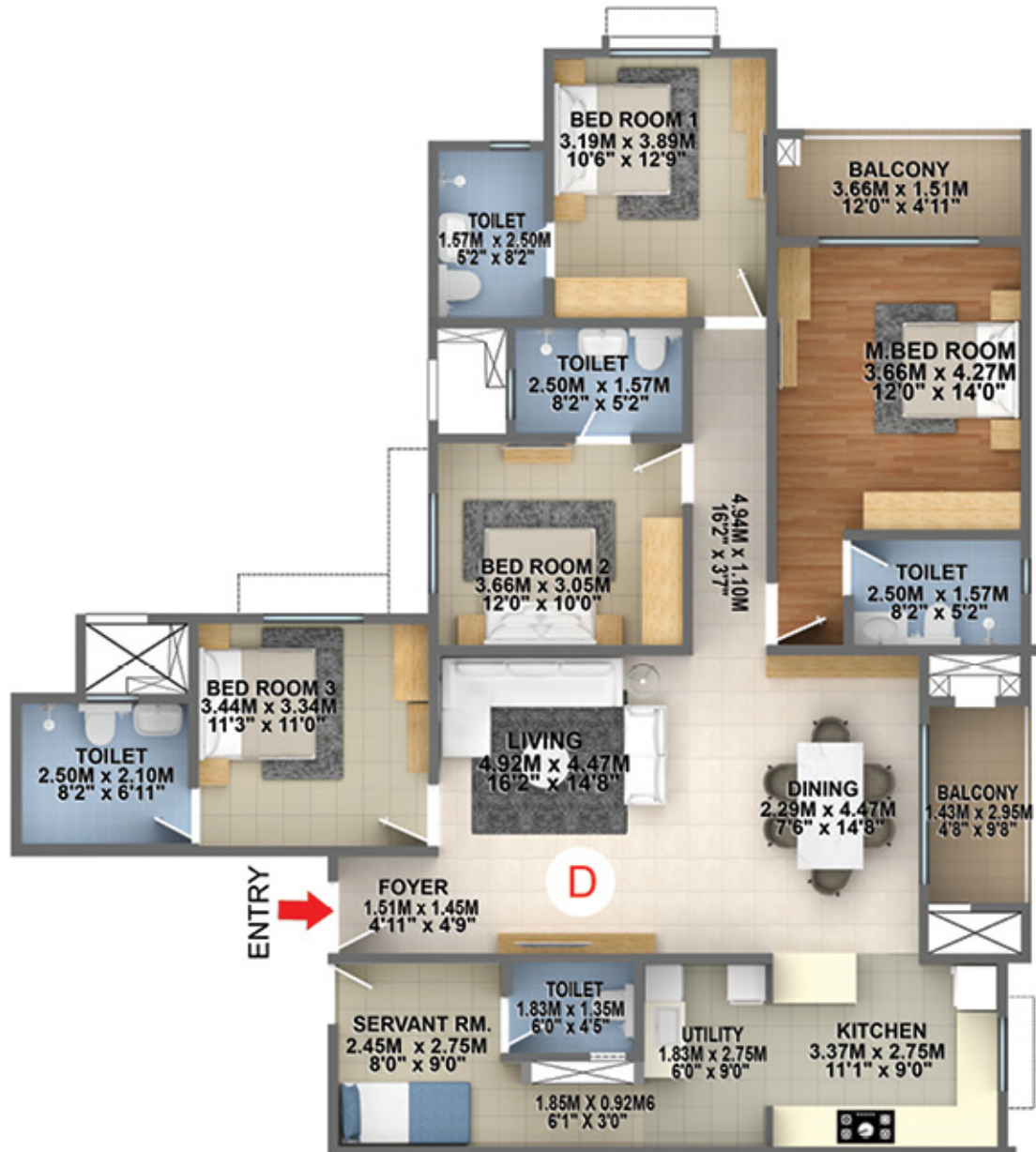
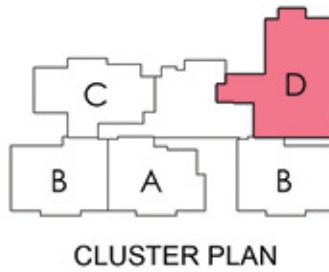
BALCONY

52 Sq.ft. / 4.80 Sq.m.

The information depicted herein viz., master plans, floor plans, furniture layout, fittings, illustrations, specifications, designs, dimensions, rendered views, colours, amenities and facilities etc., are subject to change without notifications as may be required by the relevant authorities or the Developer's architect, and cannot form part of an offer or contract. Whilst every care is taken in providing this information, the Developer cannot be held liable for variations. All illustrations and pictures are artist's impression only. The information is subject to variations, additions, deletions, substitutions and modifications as may be recommended by the company's architect and/or the relevant approving authorities. The Developer is wholly exempt from any liability on account of any claim in this regard. (1 square metre = 10.764 square feet). E & OE. All dimensions and calculations are done in metric system (M/Sq.m), and imperial system (FV/Sq.ft) shown is for reference only. All dimensions indicated in the drawing are from unfinished surfaces, excluding plaster thickness and tile thickness.



TYPE D
4 BEDROOMS
+ 4 TOILETS
+ MAID'S ROOM



SUPER BUILT-UP AREA

2356 Sq.ft. / 218.87 Sq.m.

CARPET AREA

1548 Sq.ft. / 143.80 Sq.m.

BALCONY

103 Sq.ft. / 9.55 Sq.m.

The information depicted herein viz., master plans, floor plans, furniture layout, fittings, illustrations, specifications, designs, dimensions, rendered views, colours, amenities and facilities etc., are subject to change without notifications as may be required by the relevant authorities or the Developer's architect, and cannot form part of an offer or contract. Whilst every care is taken in providing this information, the Developer cannot be held liable for variations. All illustrations and pictures are artist's impression only. The information is subject to variations, additions, deletions, substitutions and modifications as may be recommended by the company's architect and/or the relevant approving authorities. The Developer is wholly exempt from any liability on account of any claim in this regard. (1 square metre = 10.764 square feet). E & OE. All dimensions and calculations are done in metric system (M/Sq.m), and imperial system (FV/Sq.ft) shown is for reference only. All dimensions indicated in the drawing are from unfinished surfaces, excluding plaster thickness and tile thickness.

SPECIFICATIONS

COMMON AREA FLOORING

Waiting Lounge / Reception / GF Lobby:

Granite / Vitrified Tiles

Staircase: Cement Step Tiles

Lift Lobby and Corridors:

Vitrified / Industrial Tiles

Terrace: Clay Tiles / Industrial Tiles

UNIT FLOORING

Living / Dining / Family / Foyer / Bedrooms / Kitchen /

Utility: Vitrified Tiles

Balcony: Anti-skid Ceramic Tiles

Toilets: Ceramic Tiles

Maid's Room and Toilet: Ceramic Tiles

WALL DADO

Kitchen: Provision for Modular Kitchen

(No Granite Slab / No Dado will be provided)

Toilets: Ceramic Tiles

KITCHEN

a. Counter:

Provision for Modular Kitchen

(No Counter will be provided)

b. Plumbing / Electrical:

Plumbing: Water Inlet / Drain Provision for

Water Purifier / Sink, Washing Machine and Dishwasher

Electrical: Common Electrical Point for Washing

Machine and Dishwasher

TOILETS

CP Fittings: Grohe or equivalent

Sanitary Fixtures: Wall Mounted EWC

(Duravit / equivalent)

DOORS

Main Door / Internal Doors: Hardwood Frame with flush shutter

Balcony Door: UPVC / Aluminium

WINDOWS

UPVC / Aluminium

PAINTING & FINISHES

a. Exterior Finish: External Grade Emulsion

b. Unit Internal Ceilings: Emulsion Paint / OBD

c. Unit Walls: Emulsion Paint

ELECTRICAL

Units - 3 BHK: 3B+3T - 6kW / 3B+2T - 5kW

Units - 4 BHK: 8kW

Switches: Modular Switches - Anchor Roma or equivalent

DG Backup*: 100% DG Backup for Units and Common Area (*at additional cost)

MISCELLANEOUS

Vertical Transportation: Lifts provided as per design



BRIGADE

Building Positive Experiences

Our Core Values



Founders



To UPGRADE TO BRIGADE, reach us on 1800 102 9977 • email: salesenquiry@brigadegroup.com

Site Marketing Office:
Brigade Nanda Heights
Chikkolasandra Village,
Subramanyapura Main Road,
Uttarahalli Hobli, Bengaluru - 560 061

Registered & Corporate Office:
29th & 30th Floor,
WTC Bangalore@Brigade Gateway Campus,
Dr. Rajkumar Road, Malleswaram-Rajajinagar,
Bengaluru - 560 055

Dubai:
Brigade Enterprises Ltd.,
708, Atrium Centre, Bank Street,
Bur Dubai. Ph: +971 43555504
dubaisales@brigadegroup.com

Offices also at: CHENNAI • HYDERABAD • MYSURU