

SENTOSA  
**PRIDE**  
SUPER-SIZED 2 & 3 BHK - PUNAWALE

Experience exciting  
lifestyle features







# LIVE BIG IN PUNAWALE

We know the value of every square foot. Extra space gives you to freedom, it enables you to live without any compromises, it creates room for priceless moments. Presenting super spacious apartments at Sentosa Pride. The spacious apartments are made special by the ample sunlight, breeze and pleasing views. Cleverly planned, Sentosa Pride takes care of every aspect, right from safety to leisure. You can expect nothing but the best here. Ask any of the 86 happy families who are staying in the phase 1 of the project. So, embrace a new lifestyle without compromising on space.

  
**SENTOSA  
PRIDE**  
SUPER-SIZED 2 & 3 BHK - PUNAWALE

# AMENITIES



Jogging Track



Open GYM



Club House



Lawn Area



Children's Play Area



Roof Terrace Garden



Temple



Senior Citizen Plaza



Security



Intercom



Video Door Phone



Solar Water Heater System



Garbage Chute



Indoor Game



Sitting Alcove



Rain Water Harvesting

# SPECIFICATIONS



## Structural

Earth Quake Resistance R.C.C Structure.  
Aesthetically designed elevation



## Plaster

Gypsum finish plaster for internal wall and ceilings  
External two coat sand face cement Plaster



## Doors

Both sided laminated main door & bed room doors  
Marble/Granite for toilet doors Fully open-able galvanized terrace doors



## Windows

Powder Coated Aluminum sliding windows with mosquitos net and MS Grills, Four Side Marble/Granite windows sills.



## Electrification and Cabling

Concealed Polycab or equivalent make wiring in entire flat, Telephone and T.V. point in living room



## Kitchen

Granite Platform with S.S. finished sink, Separate drinking water line, Water Purifier provision in kitchen, Dado tiles upto 8' height above kitchen platform, Provision for exhaust fan in kitchen



## Toilets

Concealed plumbing with chrome polished fitting of jaguar or standard make sanitary ware, Dado Tiles upto 8' height tiles in all bathrooms. Provision for exhaust fan in toilets



## Painting

Roller Finish Tractor Emulsion paint to internal walls.  
Weather shield acrylic or equivalents make paint on external walls.

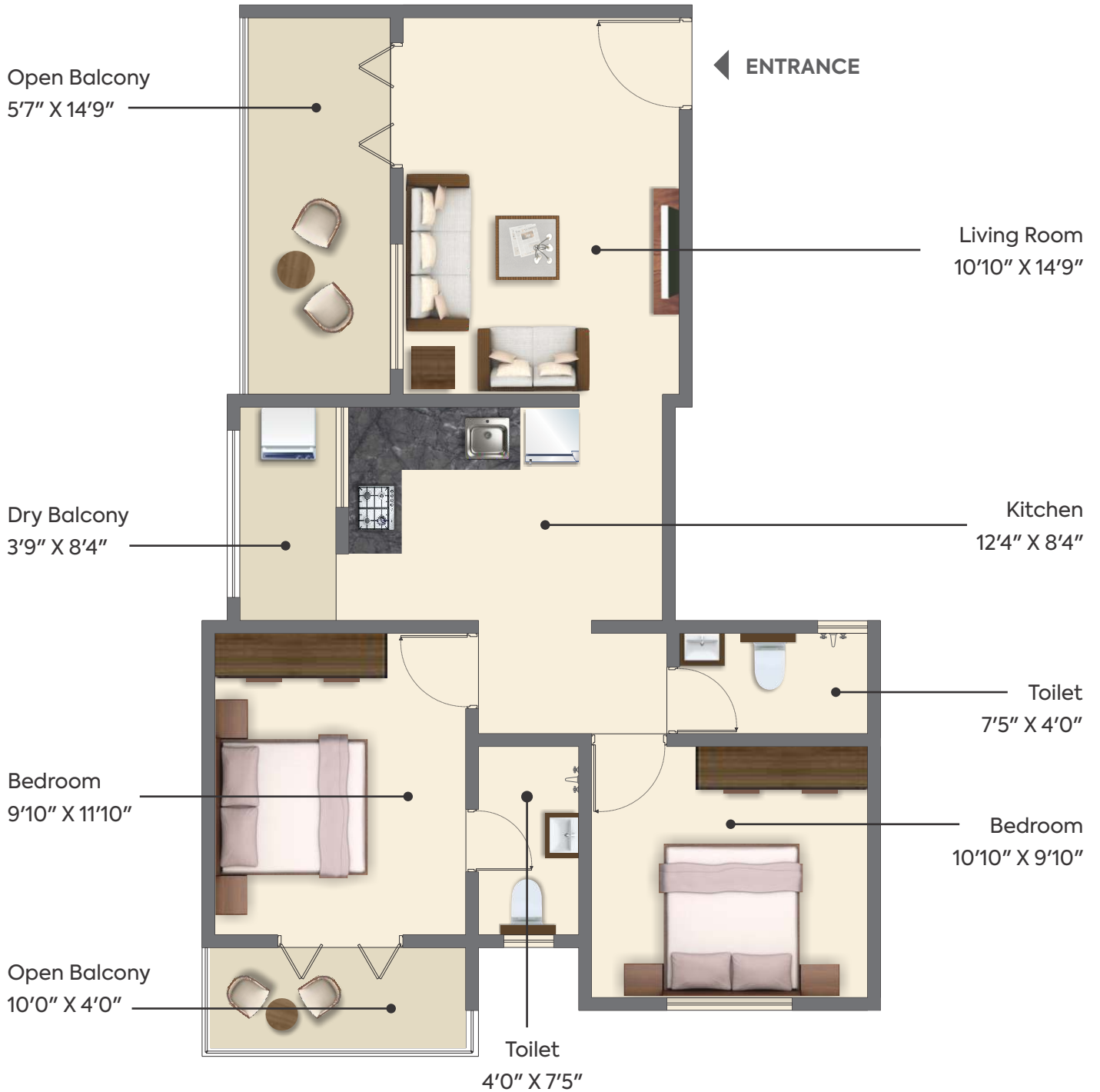


## Flooring

Vitrified flooring for rooms, Antiskid Ceramics flooring in all bathrooms

# SPACIOUS 2 BHK APARTMENT

CARPET AREA : 777 SQ. FT.





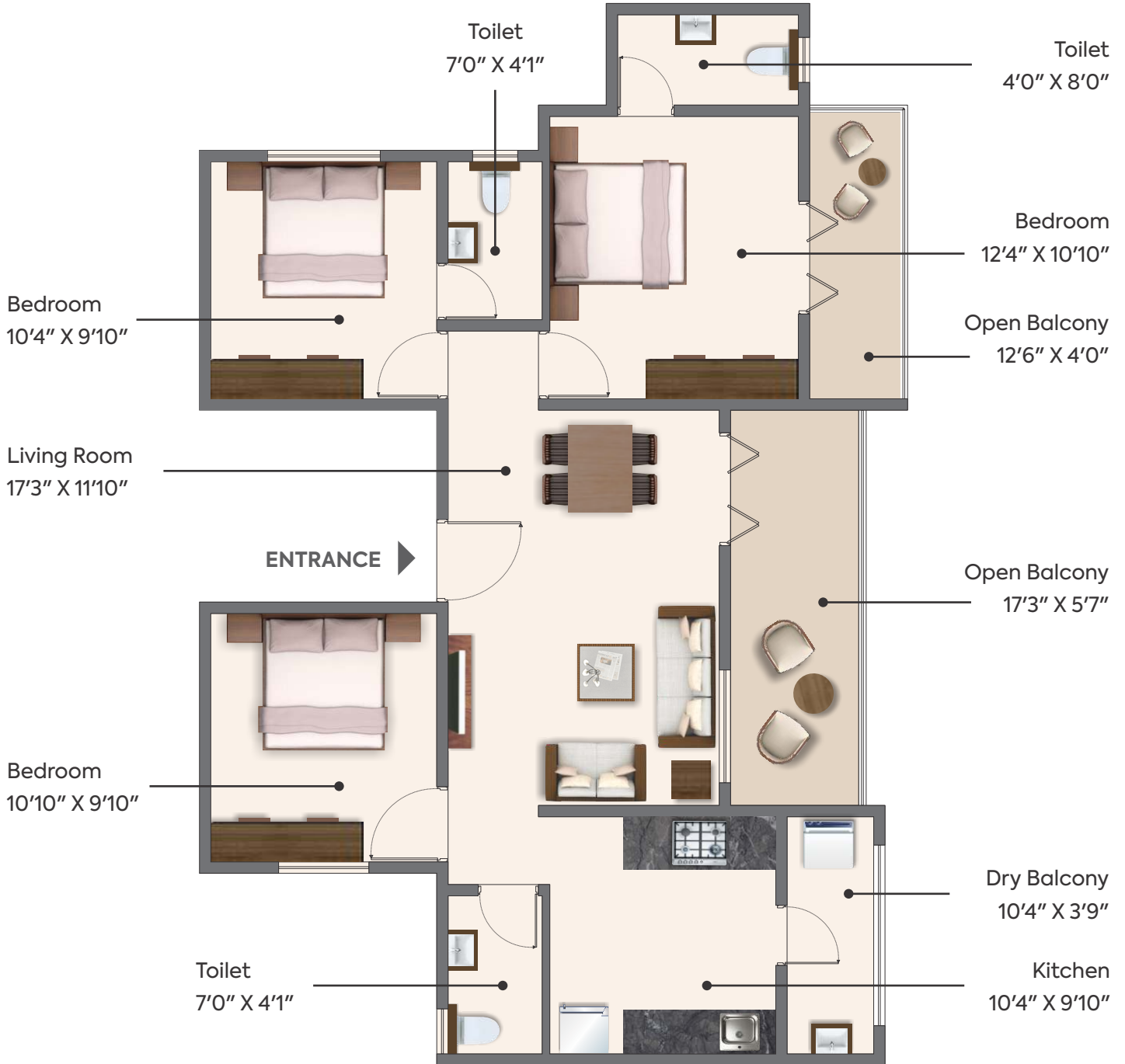
# BIGGEST 2 BHK APARTMENT

CARPET AREA : 907 SQ. FT.



# SPACIOUS 3 BHK APARTMENT

CARPET AREA : 1004 SQ. FT.



# BIGGEST 3 BHK APARTMENT

CARPET AREA : 1039 SQ. FT.



# TYPICAL FLOOR PLAN

1st, 2nd, 3rd, 4th, 5th, 6th, 7th, 9th, 10th, 11th, 12th, 14th & 15th

## CARPET AREA 777 SQ.FT.

105, 205, 305, 405, 505, 605, 705, 905, 1005, 1105, 1205, 1405, 1505

## CARPET AREA 1039 SQ.FT.

106, 206, 306, 406, 506, 606, 706, 906, 1006, 1106, 1206, 1406, 1506



104, 204, 304, 404, 504, 604, 704, 904, 1004, 1104, 1204, 1404, 1504

## CARPET AREA 777 SQ.FT.

103, 203, 303, 403, 503, 603, 703, 903, 1003, 1103, 1203, 1403, 1503

## CARPET AREA 1004 SQ.FT.



MAHARERA Reg. No. P52100018471

FLAT NO.	Type	Rera Carpet Sq. Ft.	Balcony Sq. Ft.	Total Sq. Ft.
101,201,301,401,501,601,701,801,901,1001,1101,1201,1301,1401,1501	2BHK	732	175	907
102,202,302,402,502,602,702,802,902,1002,1102,1202,1302,1402,1502	2BHK	732	175	907
103,203,303,403,503,603,703,803,903,1003,1103,1203,1303,1403,1503	3BHK	820	184	1004
104,204,304,404,504,604,704,REF,904,1004,1104,1204,REF,1404,1504	2BHK	624	153	777
105,205,305,405,505,605,705,805,905,1005,1105,1205,1305,1405,1505	2BHK	624	153	777
106,206,306,406,506,606,706,806,906,1006,1106,1206,1306,1406,1506	3BHK	855	184	1039



# LAYOUT PLAN



# PUNAWALLE





Sentosa Developers began its journey nearly three decades ago in the city of dreams. We expanded our footprint to Pune in 2008. We tasted success with Sentosa Resort, arguably Pune's favorite. Many more projects followed after that. As Pune grew beyond limits Sentosa Developers made progress too. We have successfully delivered 1000+ units in 13 years. Here are some of our landmarks.

At Sentosa, we are unstoppable. We are all set to chase new horizons. We are ready to bring smiles all around!

## SENTOSA RESIDENCY

1 & 2 BHK APARTMENTS - HADAPSAR



## SENTOSA PARADISE

1 & 2 BHK APARTMENTS - WAKAD



## SENTOSA ELYSIUM

2 BHK APARTMENTS - WAKAD



## SENTOSA PEARL

1 & 2 BHK APARTMENTS - WAKAD



## SENTOSA PALM

2 BHK APARTMENTS - WAKAD

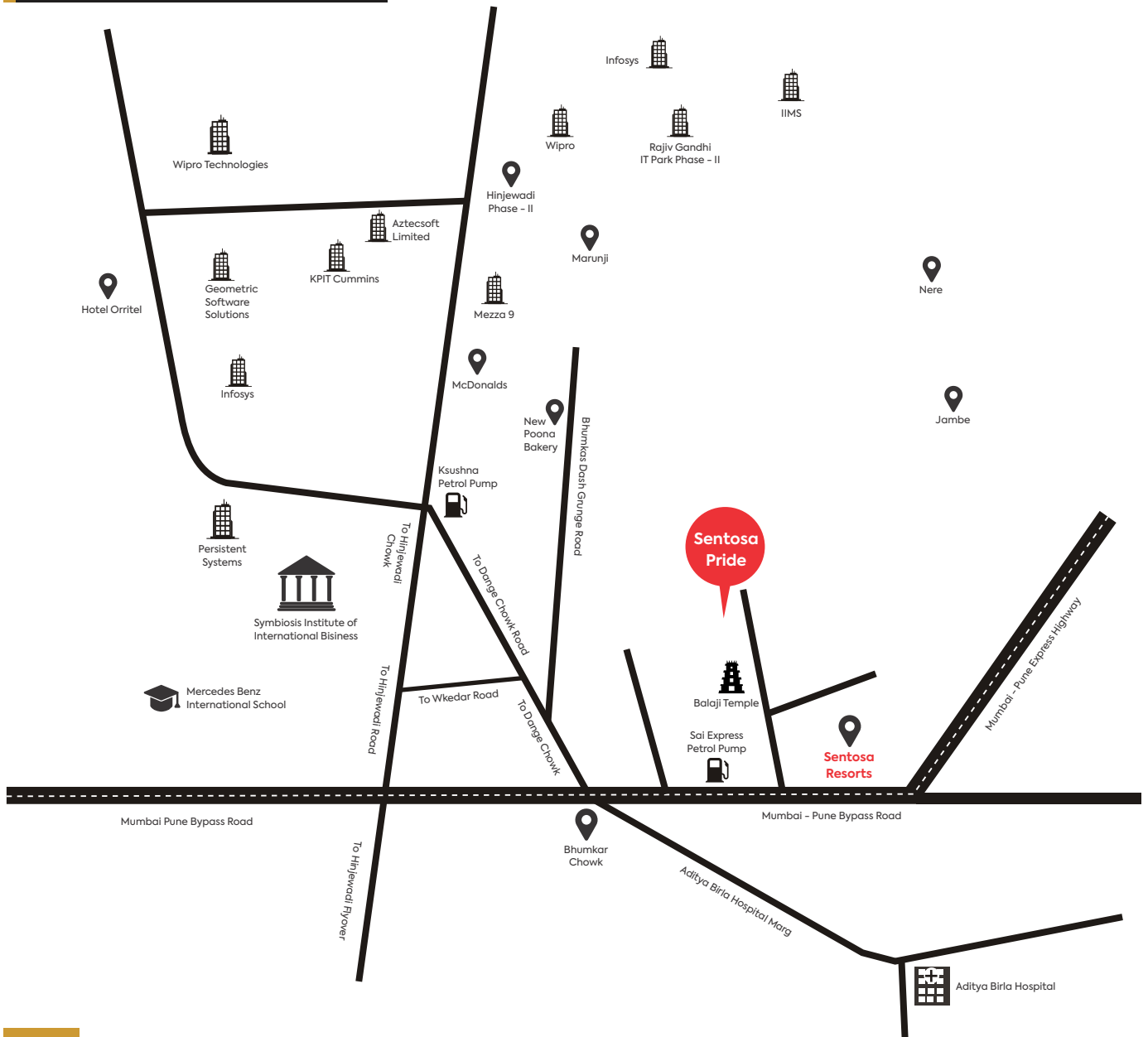


## SENTOSA SERENE

2 BHK APARTMENTS - TATHAWADE



# LOCATION MAP



## QUIET CONVENIENT

MAHARERA Reg. No. P52100018471

### The Perfect Location

Hinjewadi IT Park 07 Kms.  
Hospitals 05 Kms.  
Hotels 02 Kms.

Schools & Colleges 01 Kms.  
Malls 3.5 Kms.  
Mumbai-Bangalore Ex-Way 1.1 Kms.

**Architect**  
Dream Space Architects, Pune  
**Structural Design**  
G.A. Bhilare Consultants Pvt. Ltd.



#### Site Office

Sentosa Pride, S.No. 16/2, Near Balaji Temple, Kate Wasti, Punawale, Pune-411033

#### Corporate Office

Shree Krishna Associate, Sentosa Pride, S.No. 16/2, Near Balaji Temple, Kate Wasti, Punawale, Pune -411033

sentosapride@gmail.com

www.sentosapride.in

CALL : 7083404000, 7083405000