



RERA : PRM/KA/RERA/1251/446/PR/091123/006405











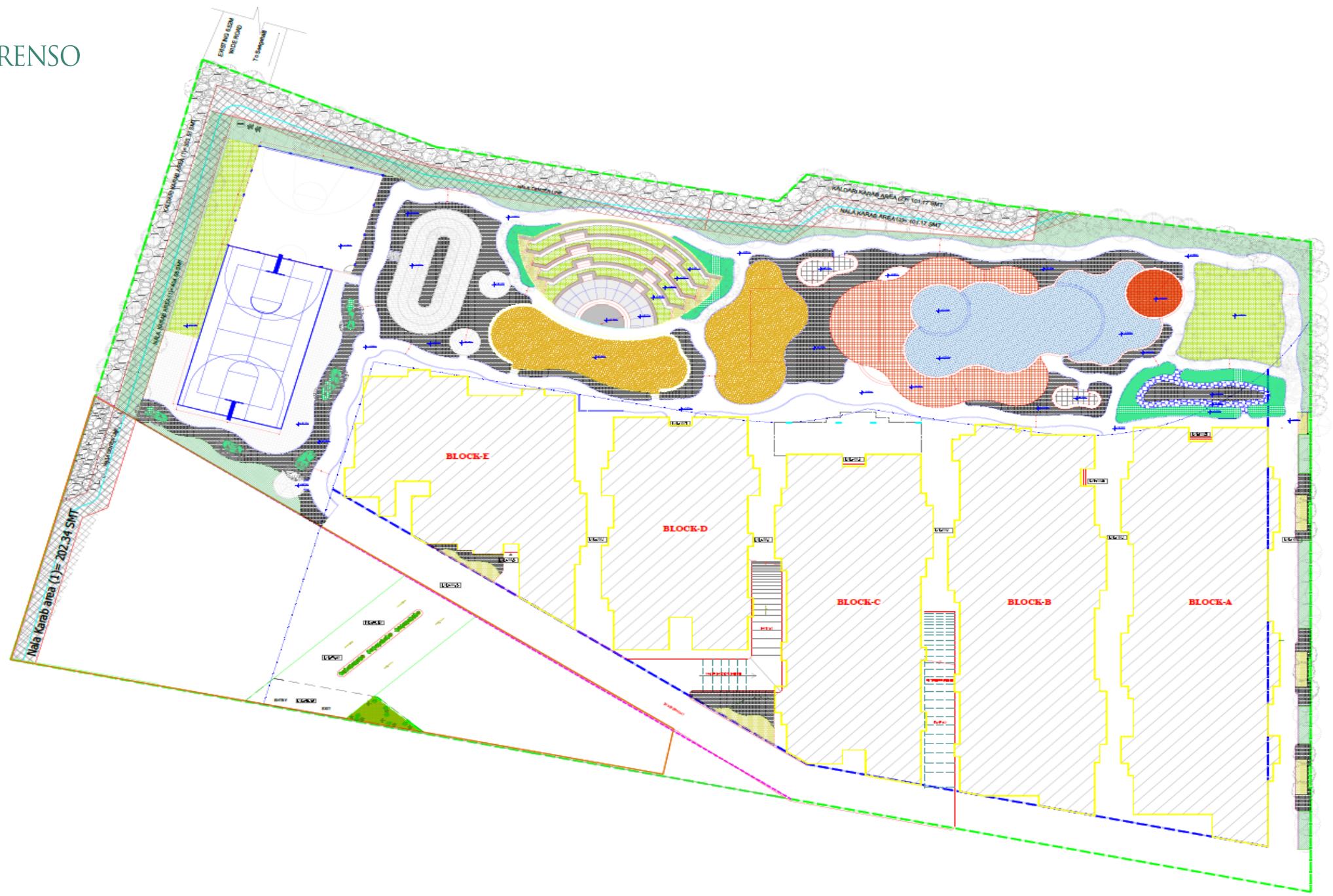








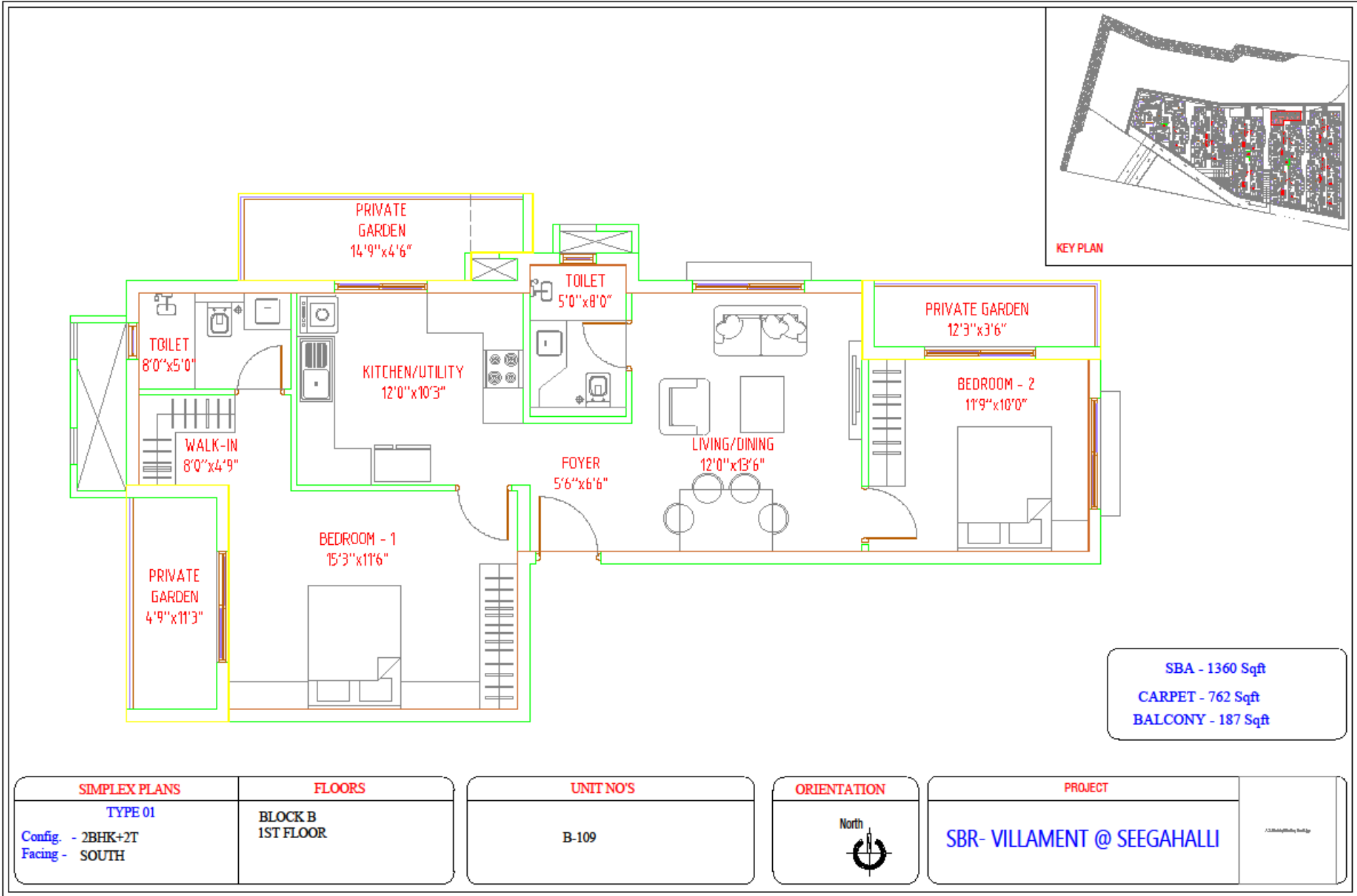


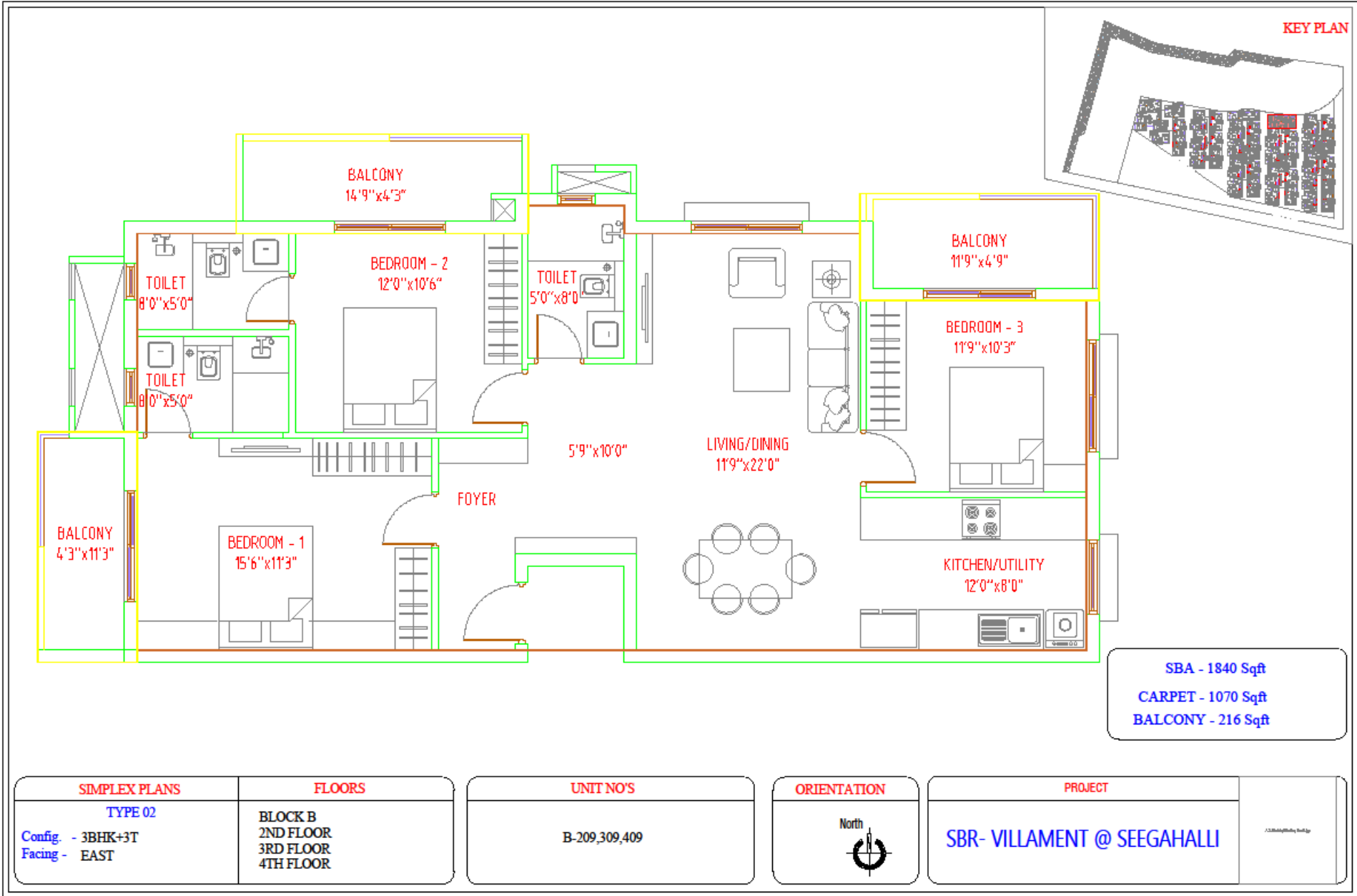




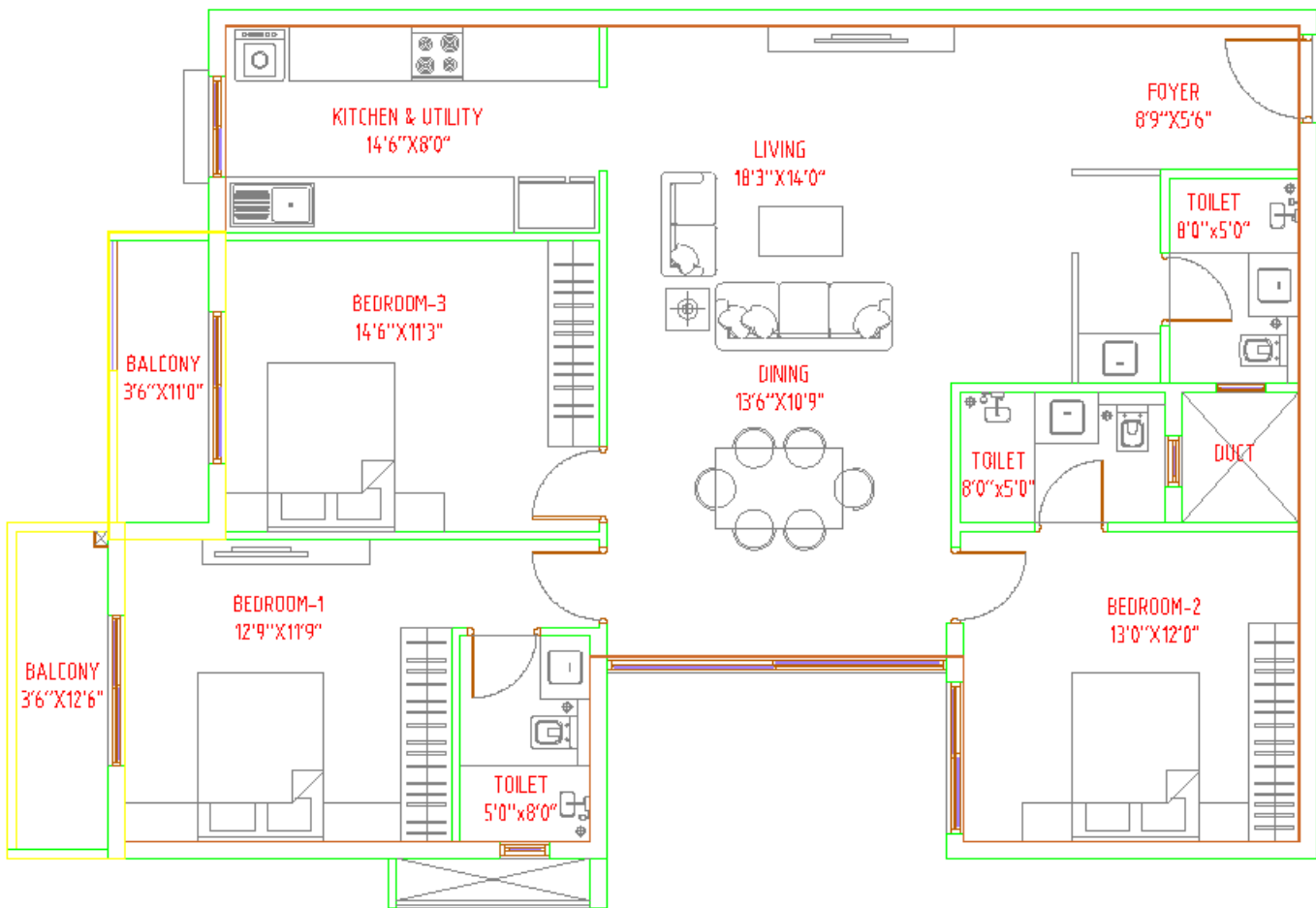
**SIMPLEX UNIT**





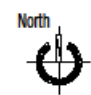



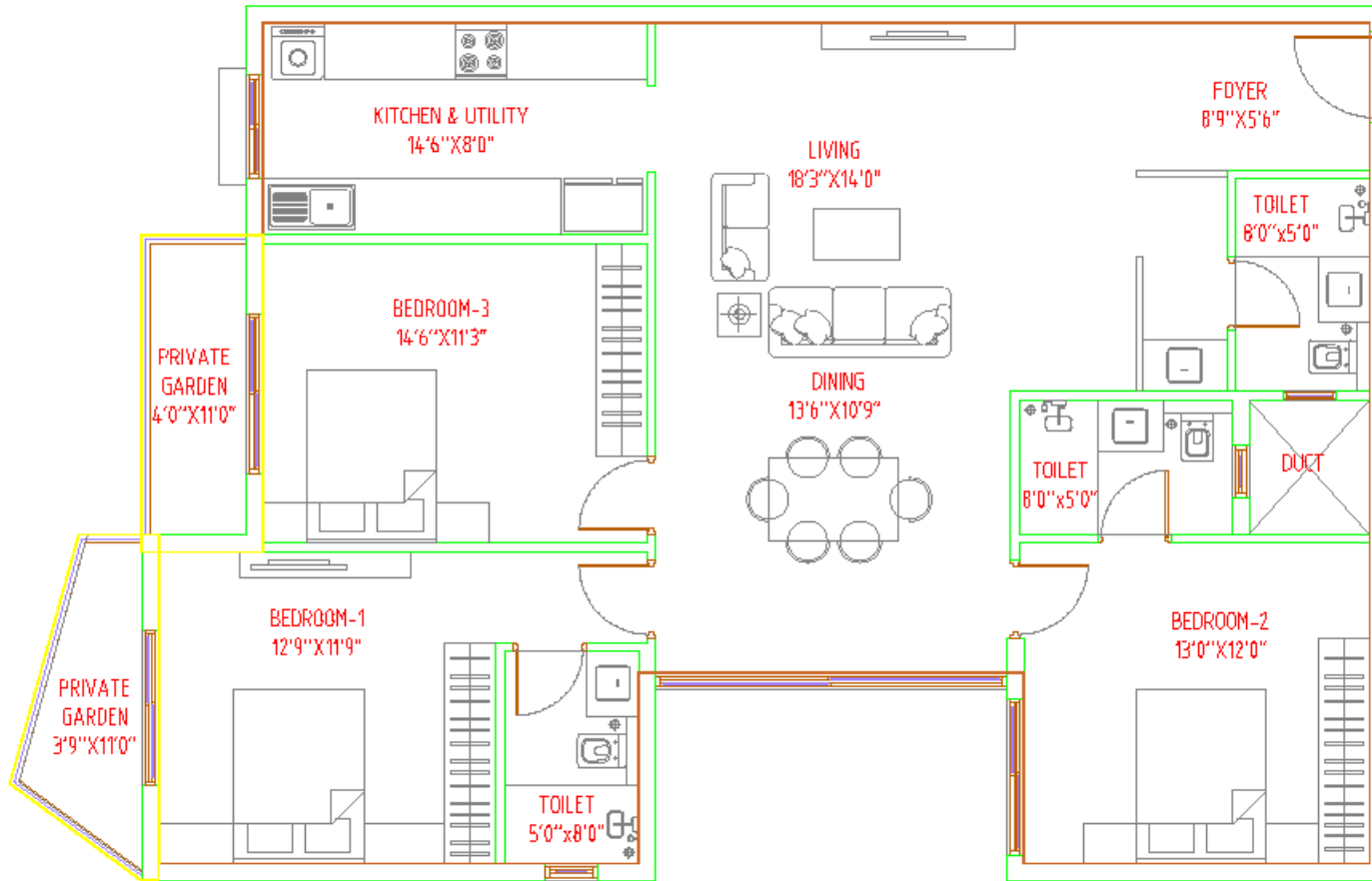




KEY PLAN


SBA - 1995 Sqft  
 CARPET - 1274 Sqft  
 BALCONY - 115 Sqft

SIMPLEX PLANS	FLOORS	UNIT NO'S	ORIENTATION	PROJECT	
TYPE 03A Config. - 3BHK+3T Facing - EAST	BLOCK E 2ND FLOOR 3RD FLOOR 4TH FLOOR	E-206,306,406	North 	SBR- VILLAMENT @ SEGAHALLI	



KEY PLAN

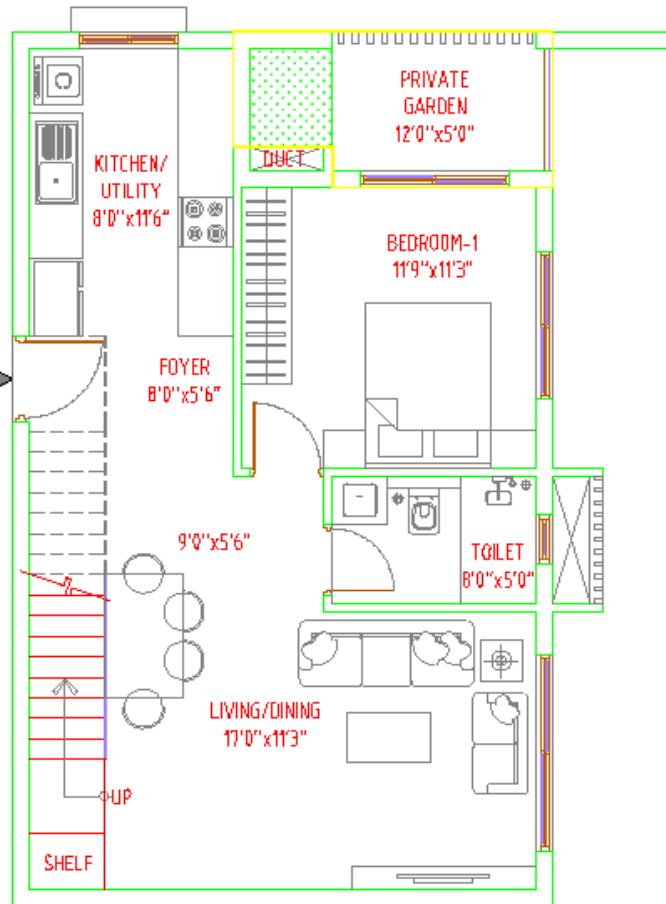
SBA - 1975 Sqft  
 CARPET - 1274 Sqft  
 BALCONY - 107 Sqft

SIMPLEX PLANS	FLOORS	UNIT NO'S	ORIENTATION	PROJECT	
TYPE 03 Config. - 3BHK+3T Facing - EAST	BLOCK E 1ST FLOOR	E-106	North 	SBR- VILLAMENT @ SEGAHALLI	<small>©2024 All Rights Reserved</small>

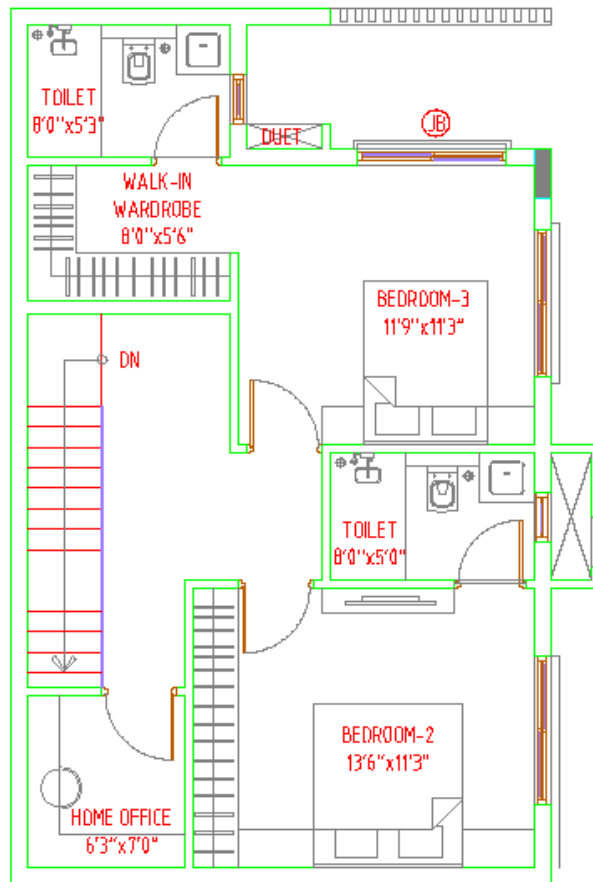




**DUPLEX UNIT**



LOWER LEVEL PLAN




UPPER LEVEL PLAN

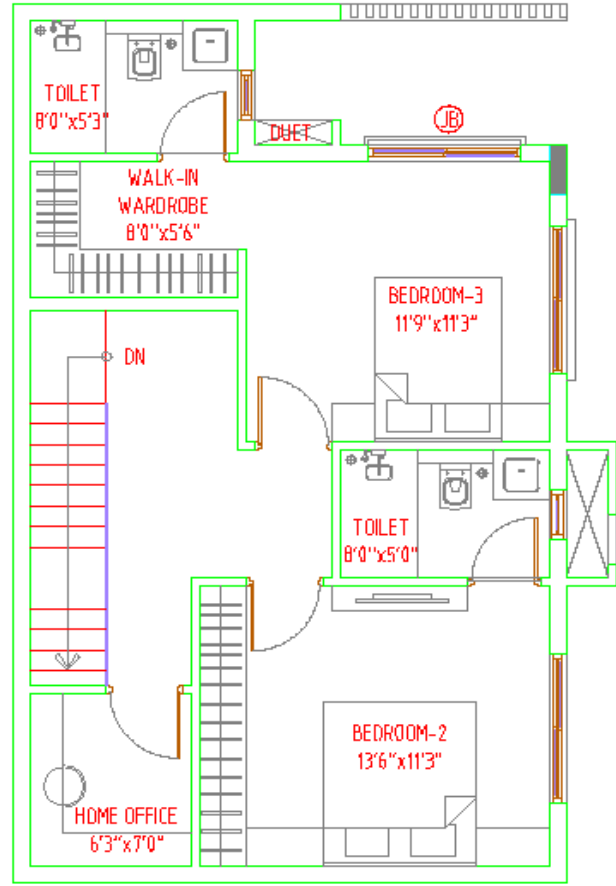
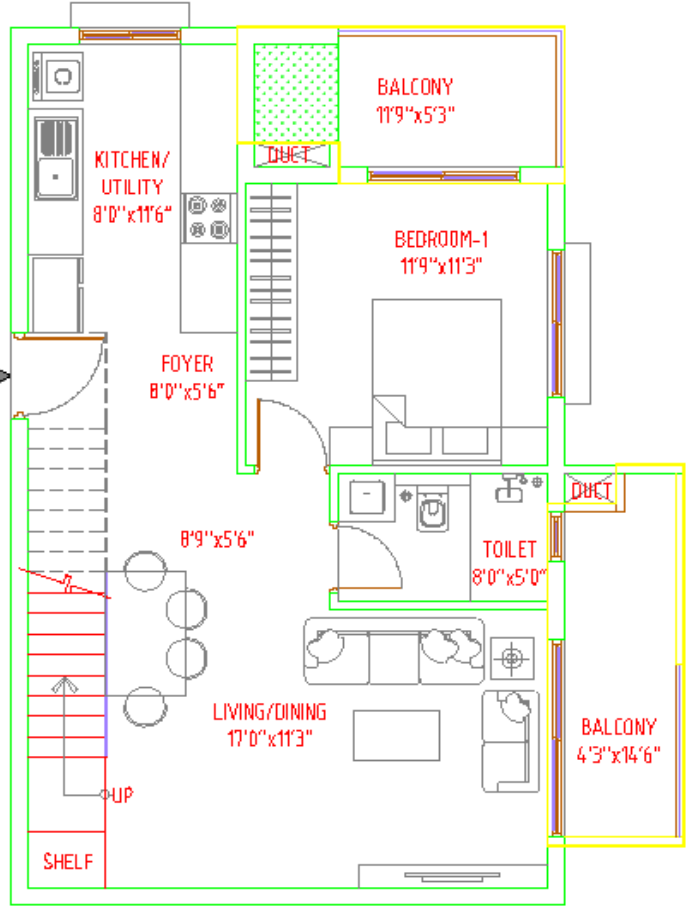


KEY PLAN

SBA - 1840 Sqft  
 CARPET - 1214 Sqft  
 BALCONY - 72 Sqft

DUPLIX PLANS	FLOORS	UNIT NO'S	ORIENTATION	PROJECT	
TYPE 01A Config. - 3BHK+3T+HOME OFFICE Facing - WEST	BLOCK C= 1ST FLOORS BLOCK D= 1ST FLOORS	C-103 D-102	North 	SBR- VILLAMENT @ SEEGAHALLI	<small>© 2014/2015/2016/2017/2018/2019/2020/2021/2022/2023/2024/2025/2026/2027/2028/2029/2030/2031/2032/2033/2034/2035/2036/2037/2038/2039/2040/2041/2042/2043/2044/2045/2046/2047/2048/2049/2050/2051/2052/2053/2054/2055/2056/2057/2058/2059/2060/2061/2062/2063/2064/2065/2066/2067/2068/2069/2070/2071/2072/2073/2074/2075/2076/2077/2078/2079/2080/2081/2082/2083/2084/2085/2086/2087/2088/2089/2090/2091/2092/2093/2094/2095/2096/2097/2098/2099/2100</small>



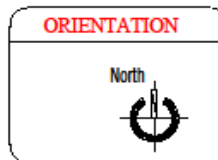


SBA - 1950 Sqft  
 CARPET - 1214 Sqft  
 BALCONY - 148 Sqft

DUPLEX PLANS
TYPE 01B
Config. - 3BHK+3T+HOME OFFICE
Facing - WEST

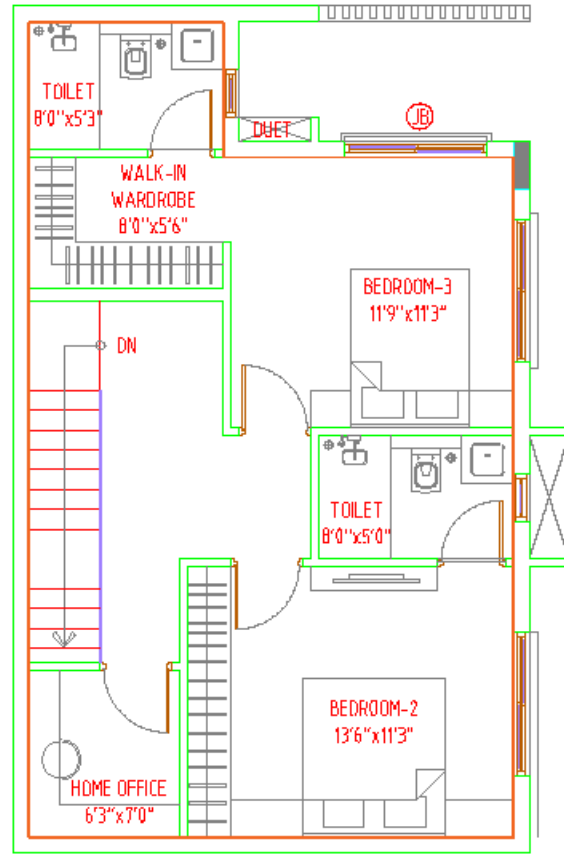
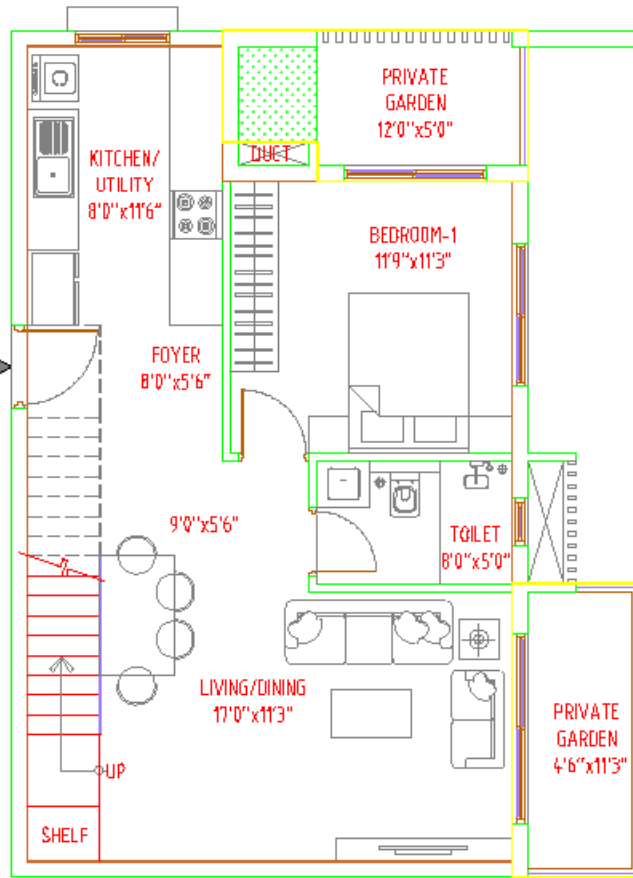
FLOORS
BLOCK A= 3RD FLOORS
BLOCK B= 3RD FLOORS
BLOCK C= 3RD FLOORS
BLOCK D= 3RD FLOORS
BLOCK E= 3RD FLOORS

UNIT NO'S	
A-301,303	C-301,303
B-301,303	D-301,303
E-303	



PROJECT
SBR- VILLAMENT @ SEEGAHALLI

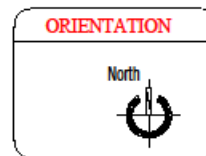
© 2014 Shree Builders



SBA - 1930 Sqft  
 CARPET - 1214 Sqft  
 BALCONY - 136 Sqft

DUPLIX PLANS	FLOORS
TYPE 01	BLOCK A= 1ST FLOORS
Config. - 3BHK+3T+HOME OFFICE	BLOCK B= 1ST FLOORS
Facing - WEST	BLOCK C= 1ST FLOORS
	BLOCK D= 1ST FLOORS
	BLOCK E= 1ST FLOORS

UNIT NO'S	
A-101,103	C-101
B-101,103	D-101
E-103	

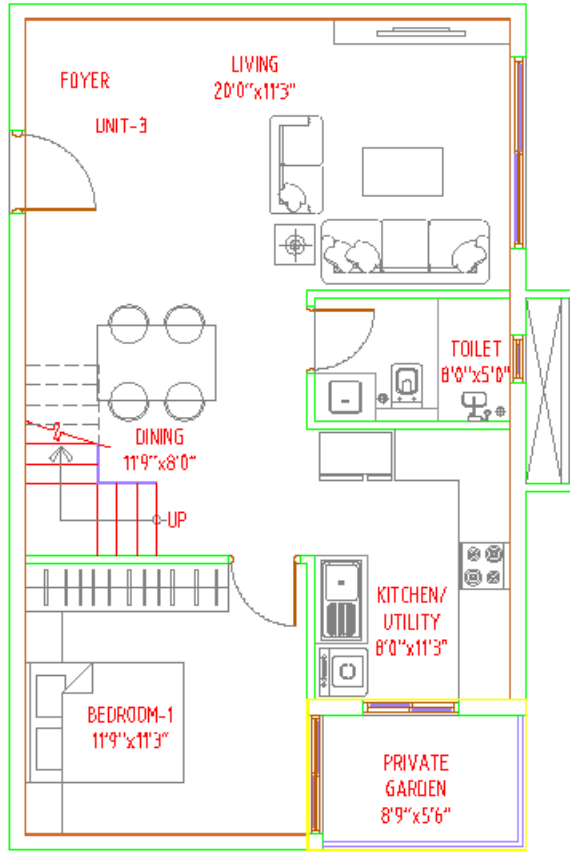


PROJECT

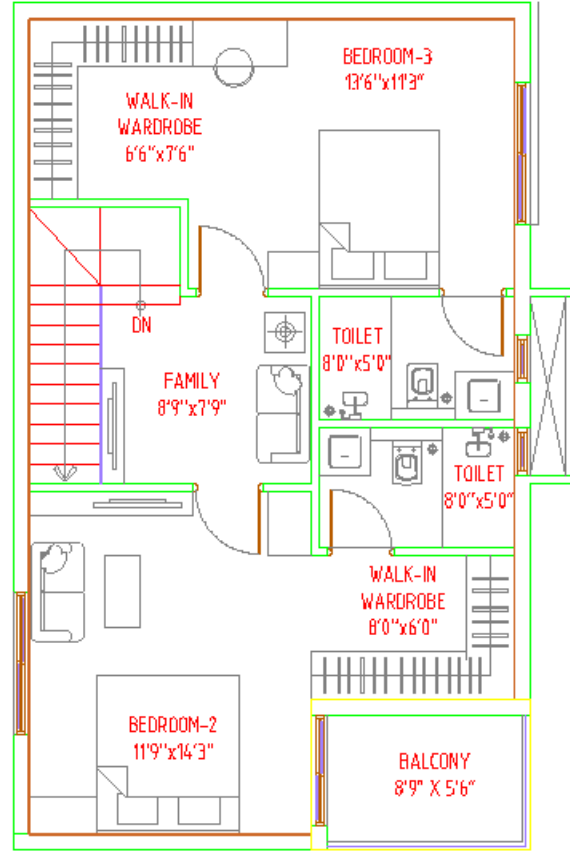
SBR- VILLAMENT @ SEGAHALLI

CSB&P/Arch/01/2023





LOWER LEVEL PLAN

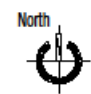


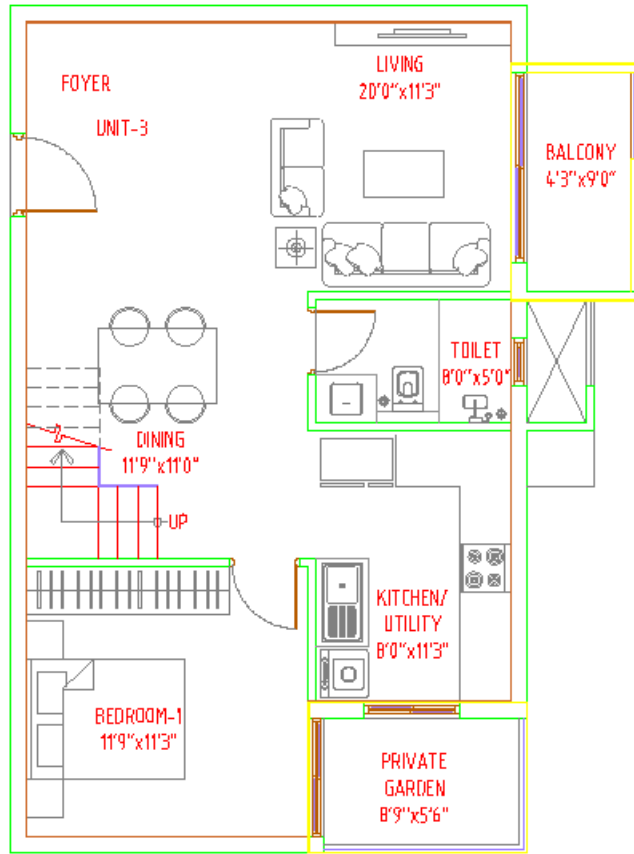
UPPER LEVEL PLAN



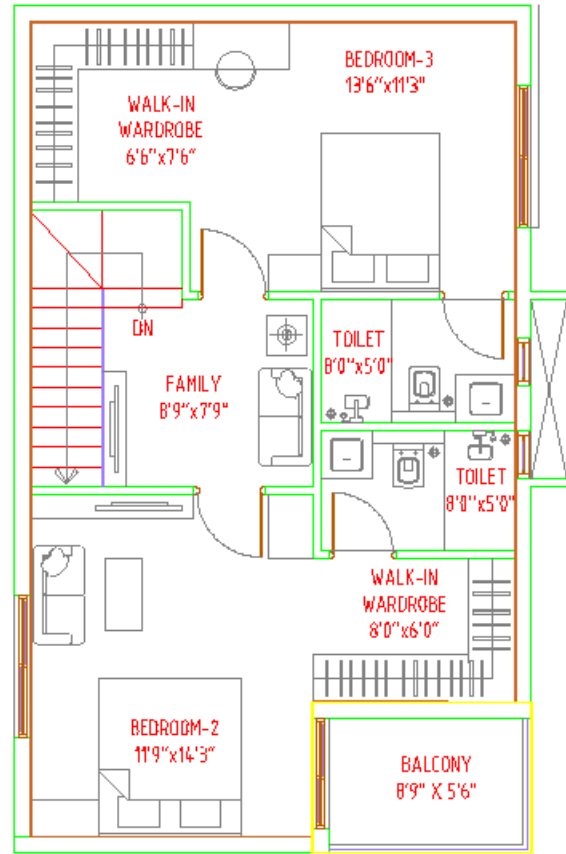
KEY PLAN

SBA - 1955 Sqft  
 CARPET - 1254Sqft  
 BALCONY - 112 Sqft

DUPLIX PLANS	FLOORS	UNIT NO'S	ORIENTATION	PROJECT	
TYPE 02A Config. - 3BHK+3T Facing - WEST	BLOCK C= 1ST FLOORS BLOCK D= 1ST FLOORS	C-104 D-103	North 	SBR- VILLAMENT @ SEGAHALLI	<small>©2018 All Rights Reserved</small>



LOWER LEVEL PLAN



UPPER LEVEL PLAN

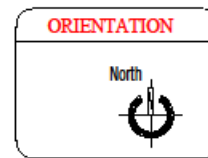


KEY PLAN

SBA - 2030 Sqft  
 CARPET - 1254 Sqft  
 BALCONY - 164 Sqft

DUPLIX PLANS	FLOORS
TYPE 02B	BLOCK A= 3RD FLOORS
Config. - 3BHK+3T	BLOCK B= 3RD FLOORS
Facing - WEST	BLOCK C= 3RD FLOORS
	BLOCK D= 3RD FLOORS
	BLOCK E= 3RD FLOORS

UNIT NO'S	
A-302,304,305	C-302,304
B-302,304	D-303
E-304	

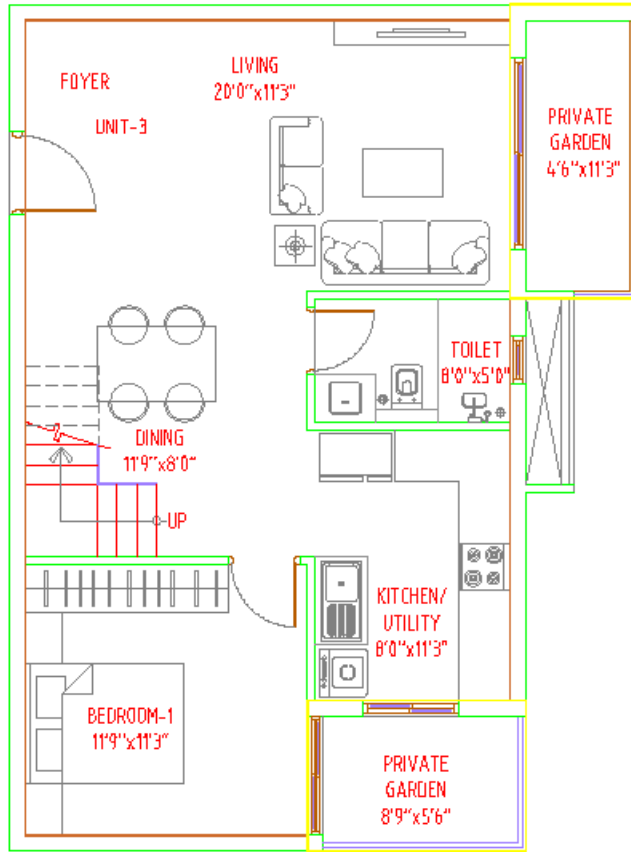


PROJECT

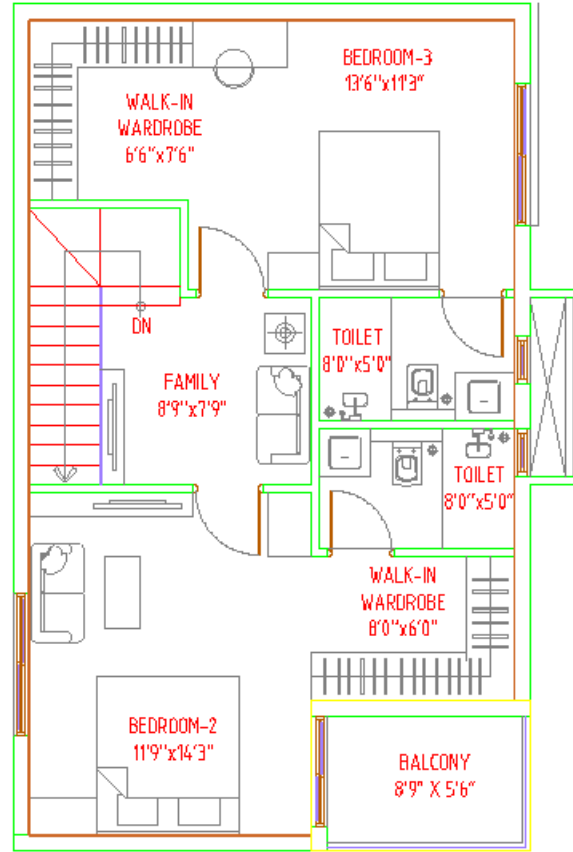
SBR- VILLAMENT @ SEGAHALLI

CSB/Arch/Plan/02/03





LOWER LEVEL PLAN



UPPER LEVEL PLAN

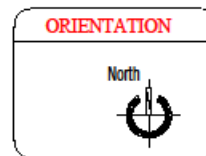


KEY PLAN

SBA - 2045 Sqft  
 CARPET - 1254 Sqft  
 BALCONY - 176 Sqft

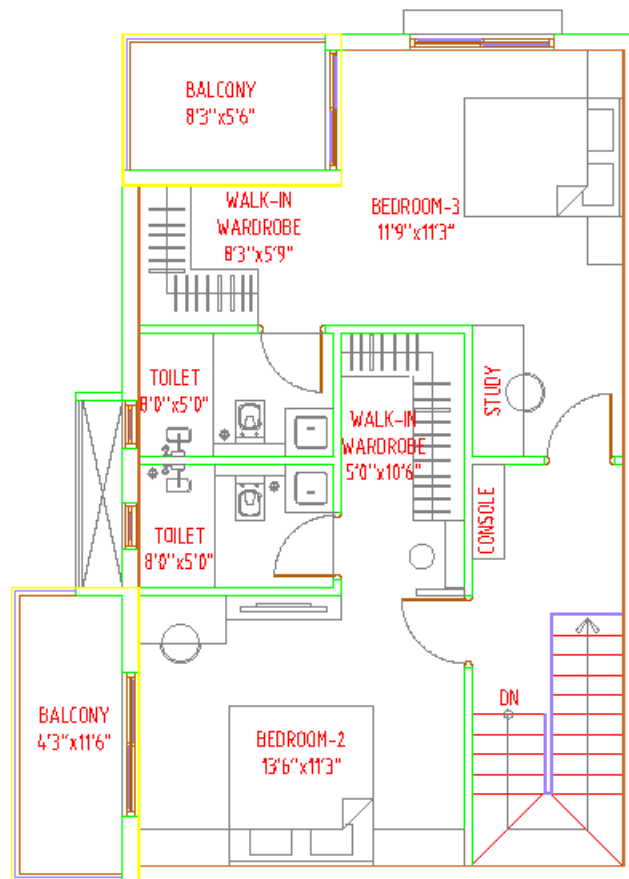
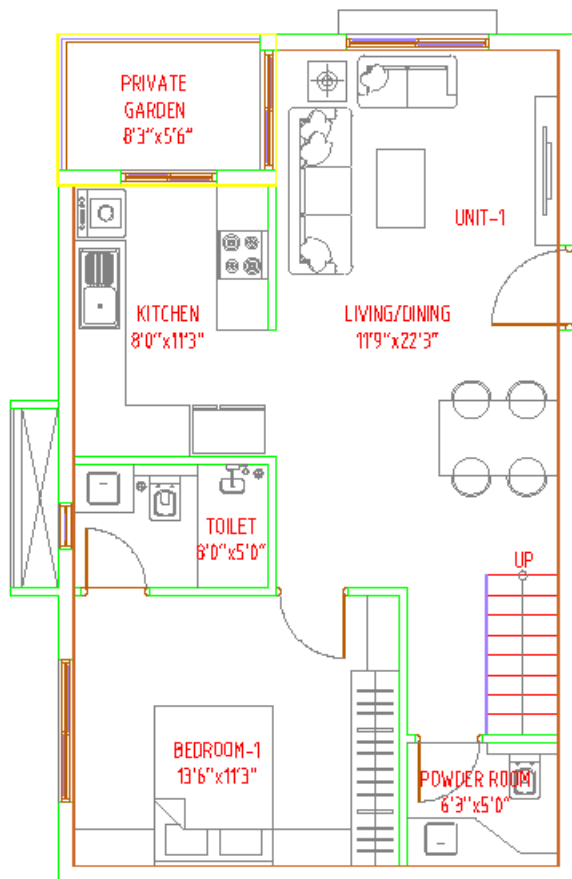
DUPLIX PLANS	FLOORS
TYPE 02 Config. - 3BHK+3T Facing - WEST	BLOCK A= 1ST FLOORS BLOCK B= 1ST FLOORS BLOCK C= 1ST FLOORS BLOCK D= 1ST FLOORS BLOCK E= 1ST FLOORS

UNIT NO'S	
A-102,104,105	C-102
B-102,104	E-104



PROJECT  
**SBR- VILLAMENT @ SEGAHALLI**

CS&S/Arch/04/05/2018

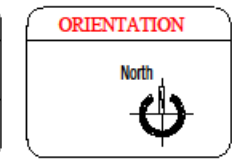


**SBA - 2045 Sqft**  
**CARPET - 1254 Sqft**  
**BALCONY - 176 Sqft**

DUPLIX PLANS
TYPE 03A
Config - 3BHK+4T
Facing - EAST

FLOORS
BLOCK A= 3RD FLOORS
BLOCK B= 1ST & 3RD FLOORS
BLOCK C= 1ST & 3RD FLOORS
BLOCK D= 3RD FLOORS
BLOCK E= 3RD FLOORS

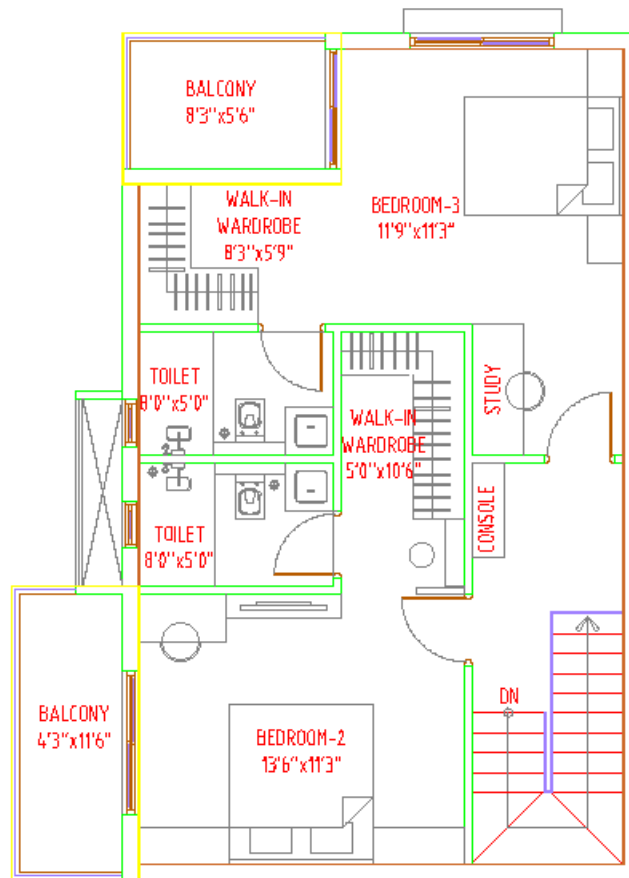
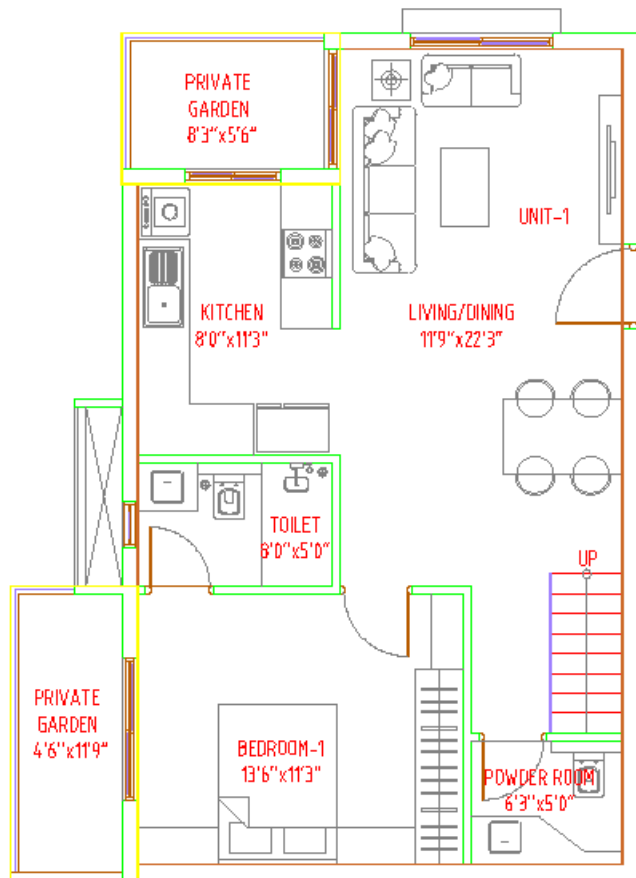
UNIT NO'S	
A-308,310	C-106,306,308
B-106,306,308	D-305,306



PROJECT
SBR- VILLAMENT @ SEGAHALLI





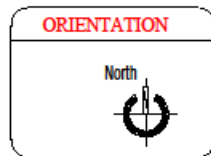


KEY PLAN

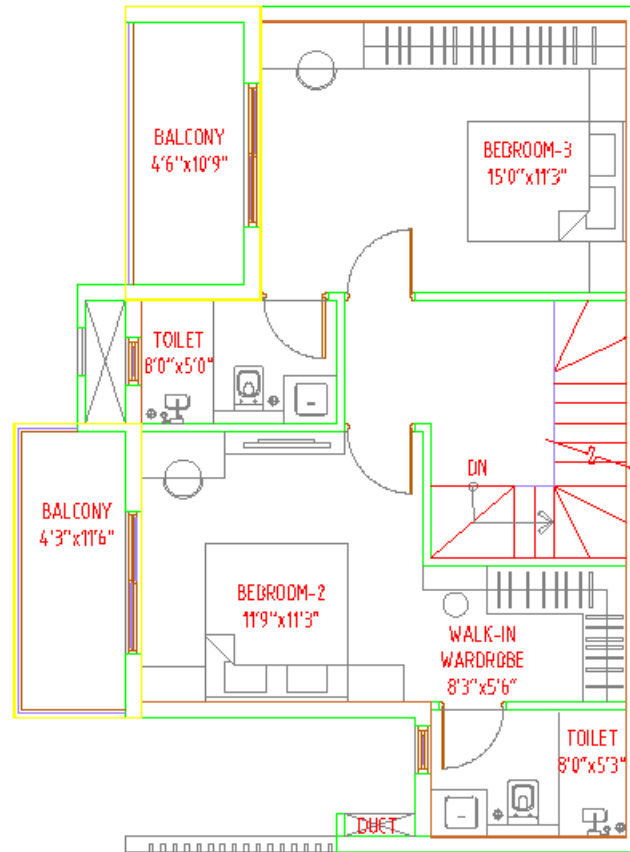
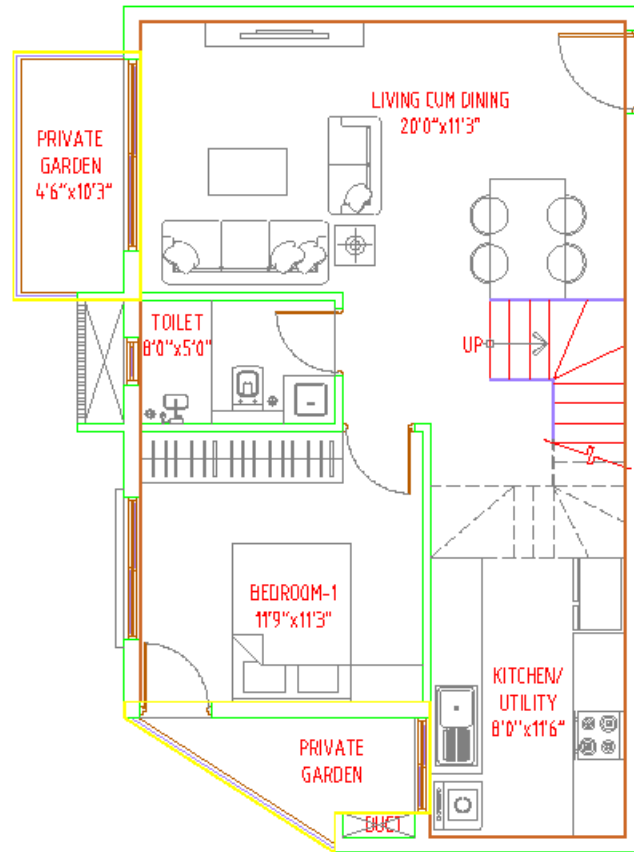
SBA - 2135 Sqft  
 CARPET - 1254 Sqft  
 BALCONY - 240 Sqft

DUPLIX PLANS	FLOORS
TYPE 03 Config. - 3BHK+4T Facing - EAST	BLOCK A= 1ST FLOORS BLOCK B= 1ST FLOORS BLOCK C= 1ST FLOORS BLOCK D= 1ST FLOORS

UNIT NO'S	
A-108,110	C-108
B-108	D-105,106



PROJECT
SBR- VILLAMENT @ SEEGAHALLI




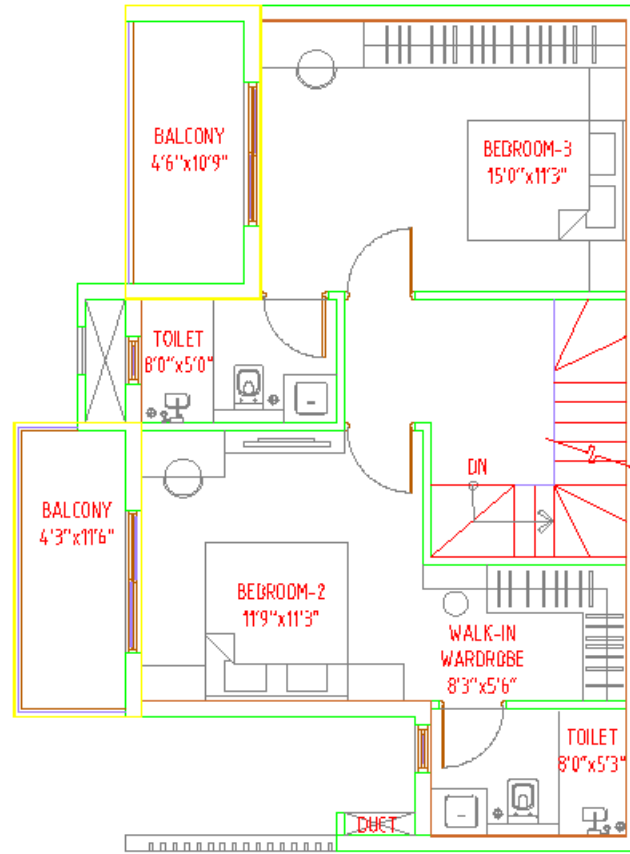
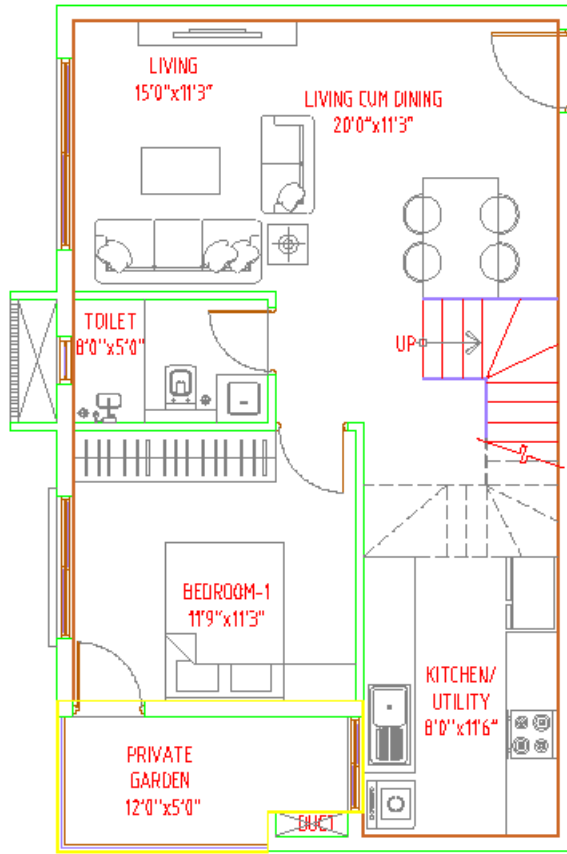
UPPER LEVEL PLAN



KEY PLAN

SBA - 1990 Sqft  
 CARPET - 1157 Sqft  
 BALCONY - 233 Sqft

DUPLIX PLANS	FLOORS	UNIT NO'S	ORIENTATION	PROJECT	
TYPE 04A Config. - 3BHK+3T Facing - EAST	BLOCK C- 1ST	C - 105	North 	SBR- VILLAMENT @ SEGAHALLI	<small>©2018 All Rights Reserved</small>



KEY PLAN

SBA - 1945 Sqft  
 CARPET - 1157 Sqft  
 BALCONY - 204 Sqft

DUPLIX PLANS	FLOORS
TYPE 04B	BLOCK A= 3RD FLOORS
Config. - 3BHK+3T	BLOCK B= 1ST & 3RD FLOORS
Facing - EAST	BLOCK C= 3RD FLOORS
	BLOCK D= 3RD FLOORS

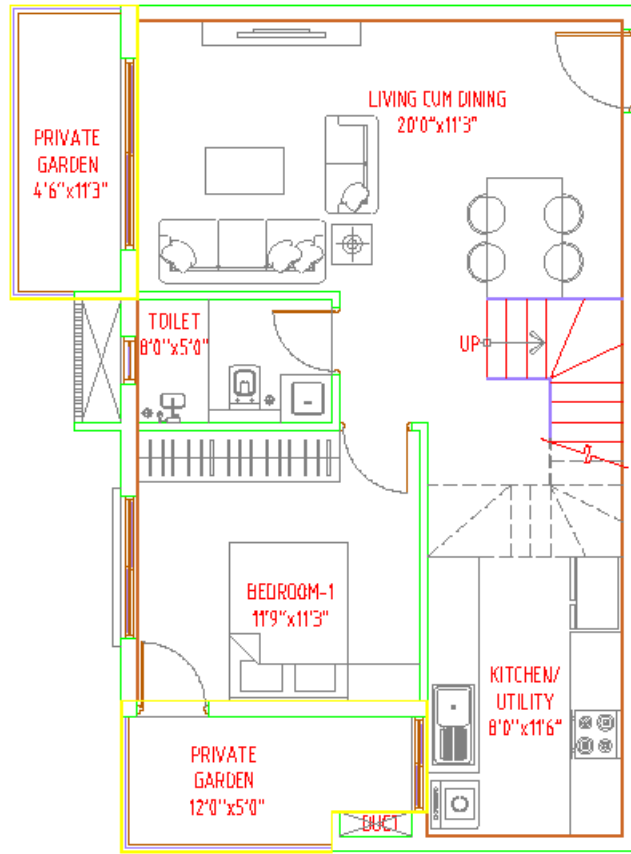
UNIT NO'S	
A-306,307,309	C-305,307
B-105,305,307	D-304

ORIENTATION

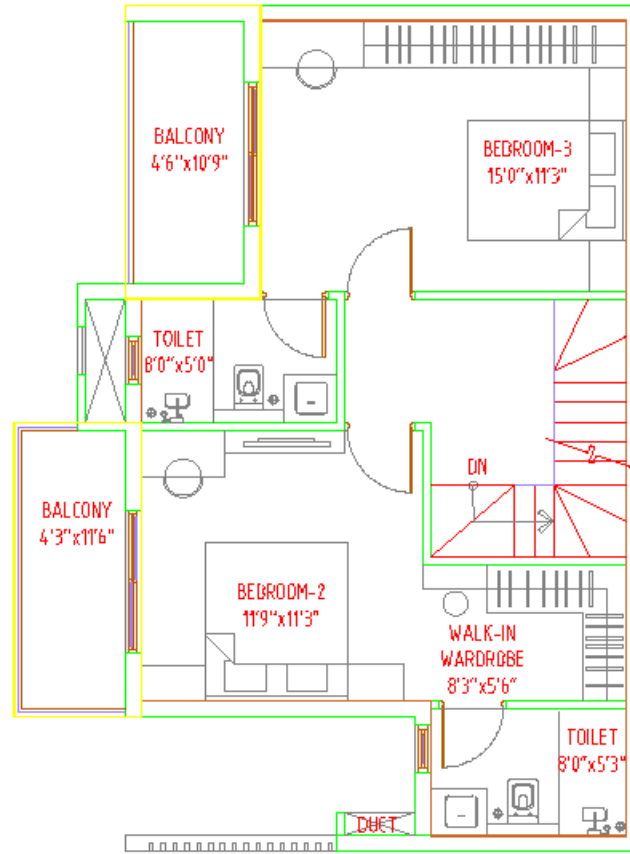
PROJECT

SBR- VILLAMENT @ SEGAHALLI





LOWER LEVEL PLAN



UPPER LEVEL PLAN

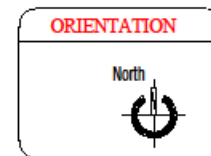


KEY PLAN

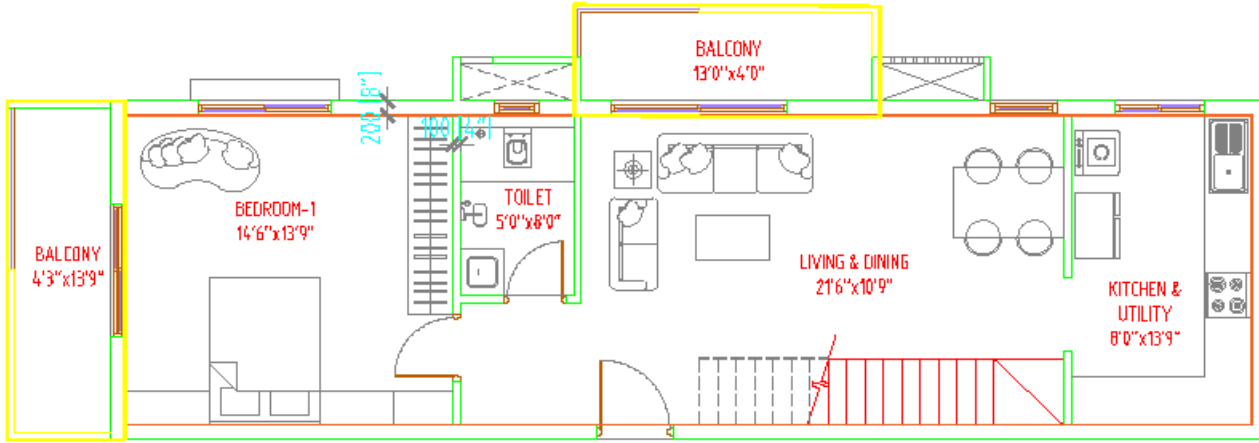
SBA - 2035 Sqft  
 CARPET - 1157 Sqft  
 BALCONY - 267 Sqft

DUPLIX PLANS	FLOORS
TYPE 04	BLOCK A= 1ST FLOORS
Config. - 3BHK+3T	BLOCK B= 1ST FLOORS
Facing - EAST	BLOCK C= 1ST FLOORS
	BLOCK D= 1ST FLOORS

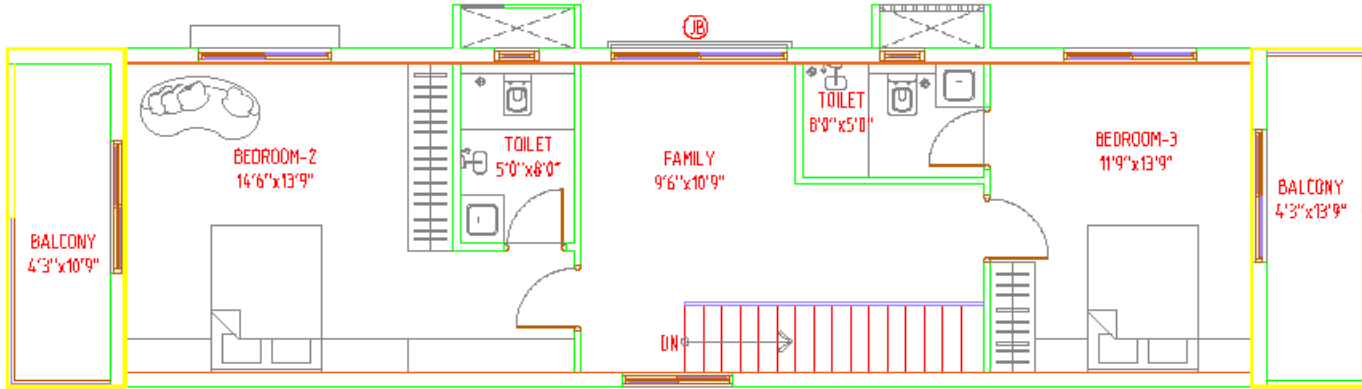
UNIT NO'S	
A-106,107,109	C-107
B-107	D-104



PROJECT
SBR- VILLAMENT @ SEGAHALLI



LOWER LEVEL PLAN

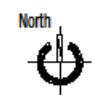



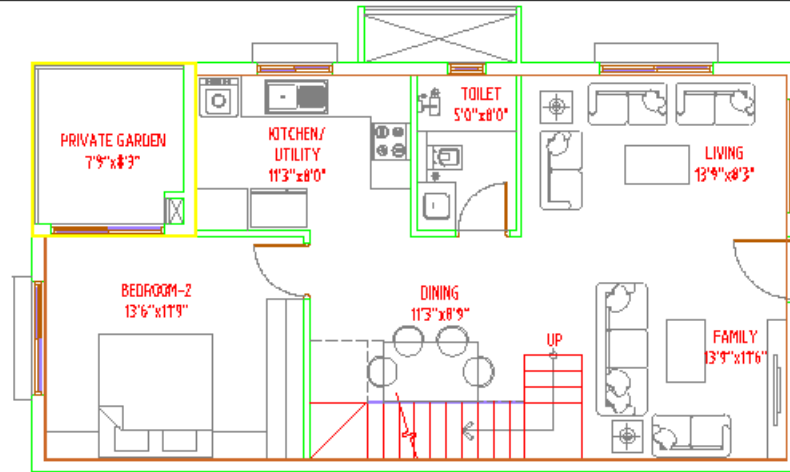
UPPER LEVEL PLAN



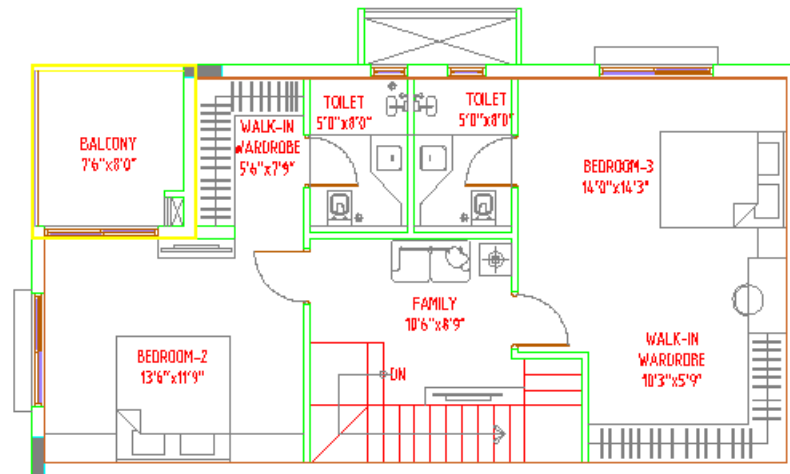
KEY PLAN

SBA - 2415 Sqft  
 CARPET - 1383 Sqft  
 BALCONY - 305 Sqft

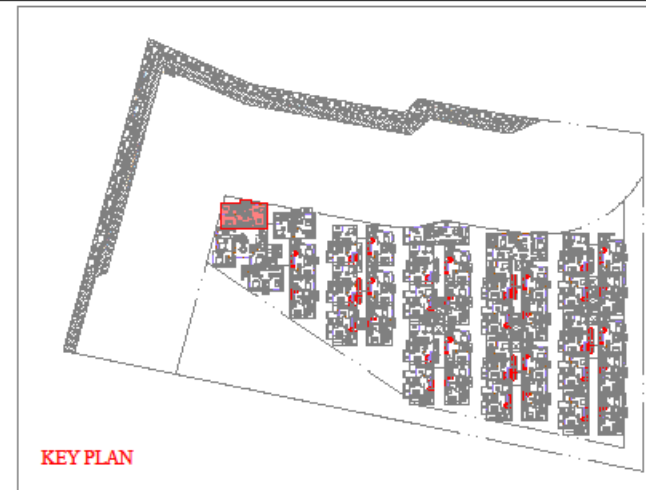
DUPLIX PLANS	FLOORS	UNIT NO'S	ORIENTATION	PROJECT	
TYPE 05 Config. - 3BHK+3T Facing - SOUTH	BLOCK C= 2ND & 4TH FLOORS	C-201,401		SBR- VILLAMENT @ SEGAHALLI	



LOWER LEVEL PLAN





UPPER LEVEL PLAN

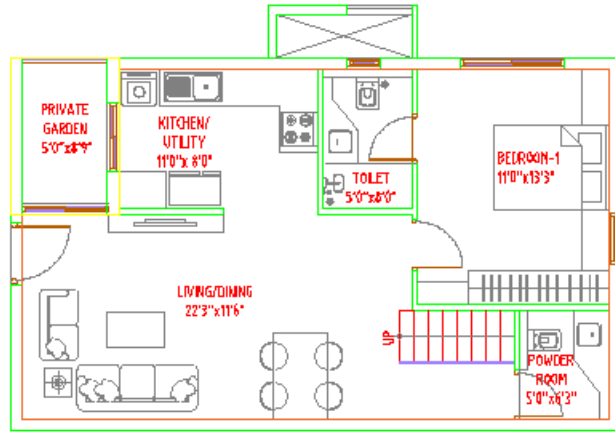


KEY PLAN

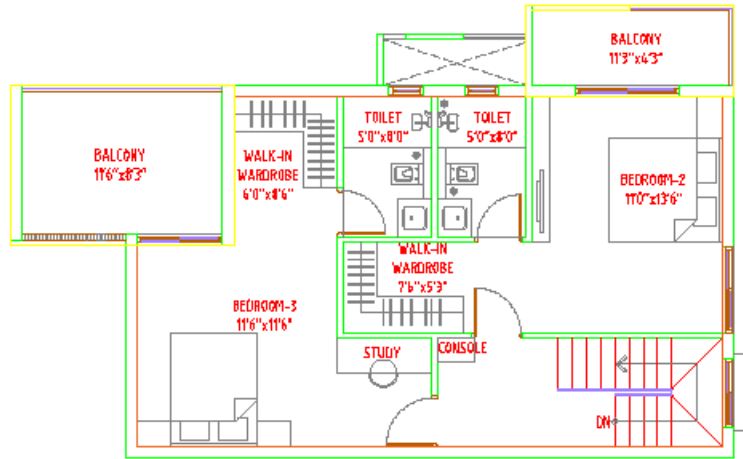
SBA - 2305 Sqft  
 CARPET - 1412 Sqft  
 BALCONY - 154 Sqft

DUPLIX PLANS	FLOORS	UNIT NO'S	ORIENTATION	PROJECT	
TYPE 06A Config. - 3BHK+3T Facing - EAST	BLOCK E= 3RD FLOOR	E-301	North 	SBR- VILLAMENT @ SEGAHALLI	





LOWER LEVEL PLAN




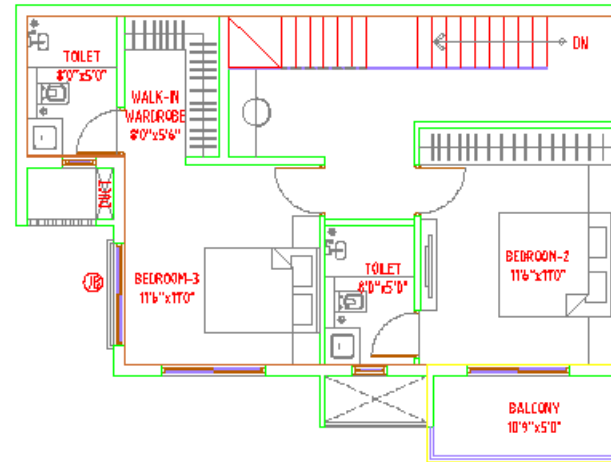
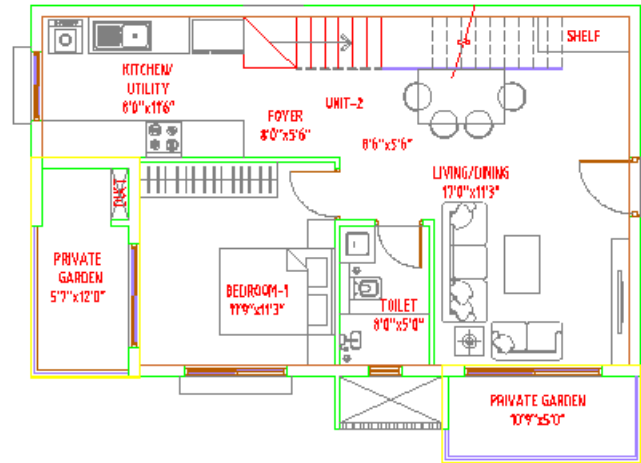
UPPER LEVEL PLAN




KEY PLAN

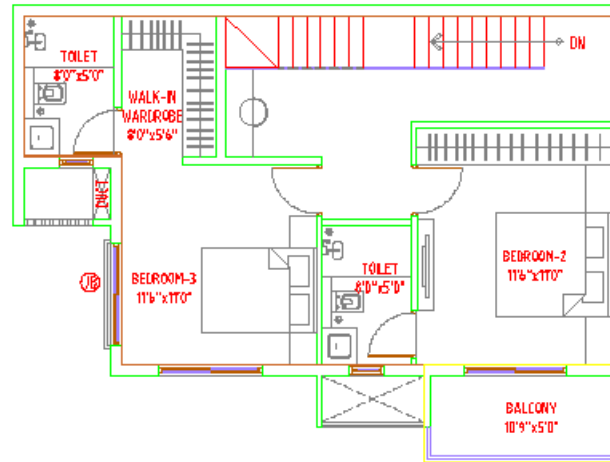
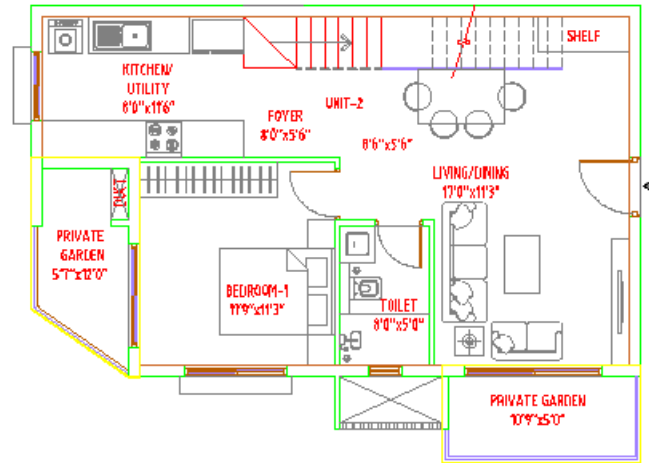
SBA - 2140 Sqft  
 CARPET - 1260 Sqft  
 BALCONY - 237 Sqft

DUPLIX PLANS	FLOORS	UNIT NO'S	ORIENTATION	PROJECT	
TYPE 07 Config. - 3BHK+4T Facing - WEST	BLOCK E= 1ST & 3RD FLOORS	E-102,302	North 	SBR- VILLAMENT @ SEGAHALLI	<small>©2014/15/16/17/18/19/20/21/22/23/24/25/26/27/28/29/30/31/32/33/34/35/36/37/38/39/40/41/42/43/44/45/46/47/48/49/50/51/52/53/54/55/56/57/58/59/60/61/62/63/64/65/66/67/68/69/70/71/72/73/74/75/76/77/78/79/80/81/82/83/84/85/86/87/88/89/90/91/92/93/94/95/96/97/98/99/100</small>




SBA - 2030 Sqft  
 CARPET - 1214 Sqft  
 BALCONY - 205 Sqft

DUPLIX PLANS	FLOORS	UNIT NO'S	ORIENTATION	PROJECT	
TYPE 08A Config. - 3BHK+4T Facing - EAST	BLOCK E= 3RD FLOOR	E-305	North 	SBR- VILLAMENT @ SEGAHALLI	<small>© 2024 All Rights Reserved</small>



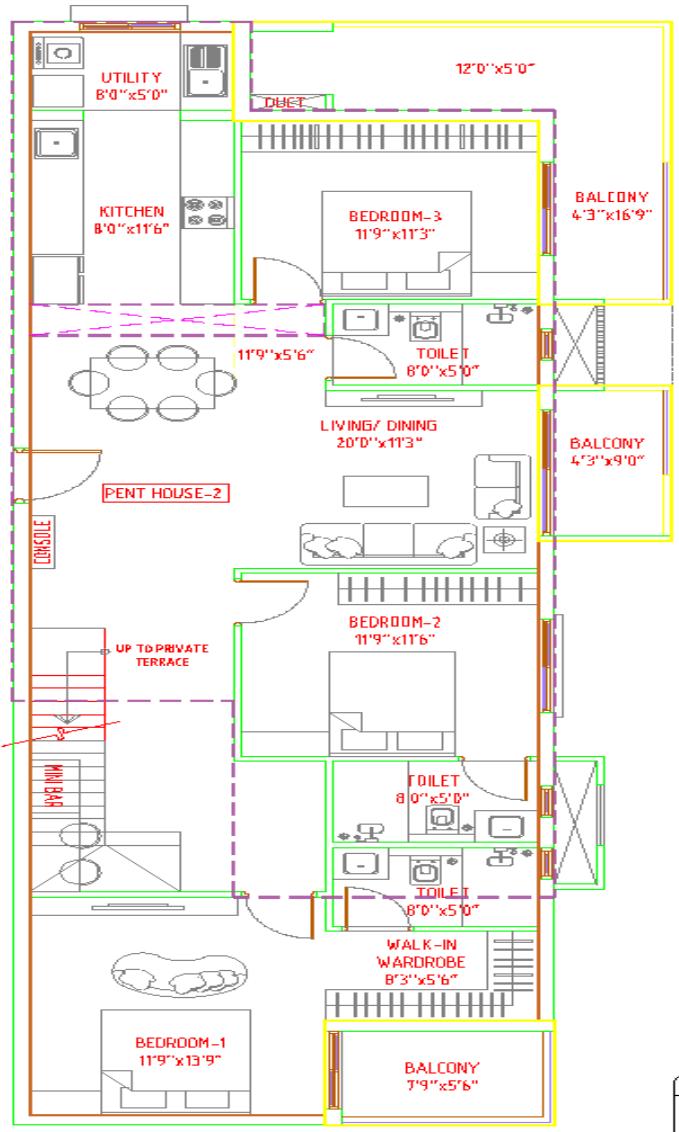
SBA - 2015 Sqft  
 CARPET - 1214 Sqft  
 BALCONY - 195 Sqft

DUPLIX PLANS	FLOORS	UNIT NO'S	ORIENTATION	PROJECT	
TYPE 08 Config. - 3BHK+4T Facing - EAST	BLOCK E= 1ST FLOORS	E-105	North 	SBR- VILLAMENT @ SEGAHALLI	<small>©2024 All Rights Reserved</small>



**PENTHOUSE UNIT**



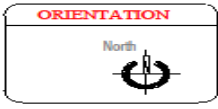


KEY PLAN

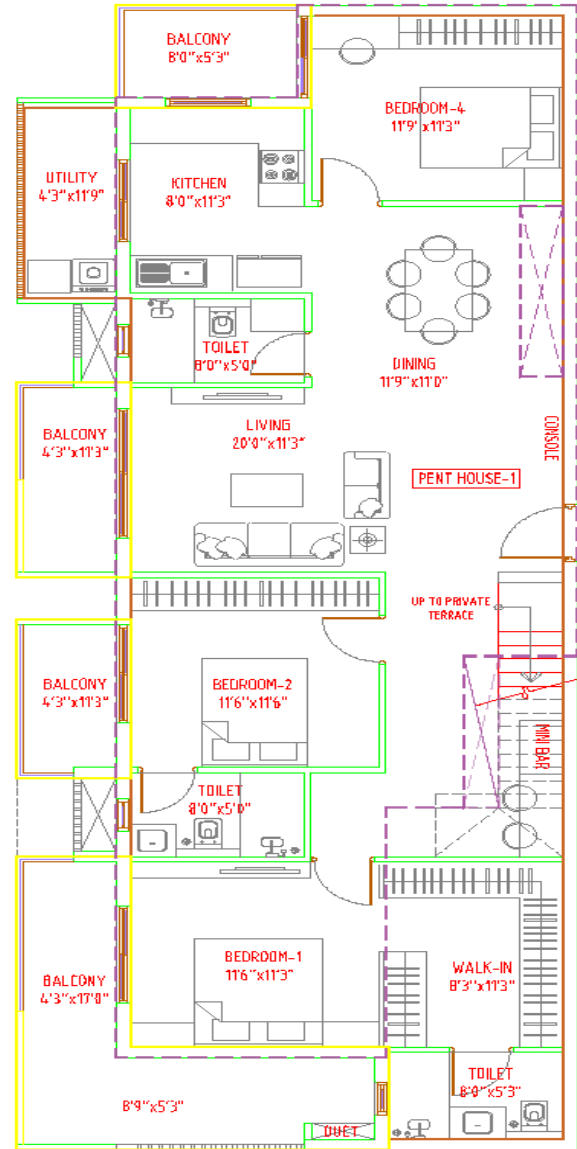
SBA - 2180 Sqft  
 CARPET - 1246 Sqft  
 BALCONY - 278 Sqft  
 TERRACE - 975 Sqft

PENTHOUSE PLANS	FLOORS
TYPE 01	BLOCK A= 5TH FLOORS
Config - 3BHK+3T	BLOCK B= 5TH FLOORS
Facing - WEST	BLOCK C= 5TH FLOORS
	BLOCK D= 5TH FLOORS
	BLOCK E= 5TH FLOORS

UNIT NO'S	
A-501,502	C-501,502
B-501,502	D-502
E-502	



PROJECT	
SBR- VILLAMENT @ SEGAHALLI	



KEY PLAN

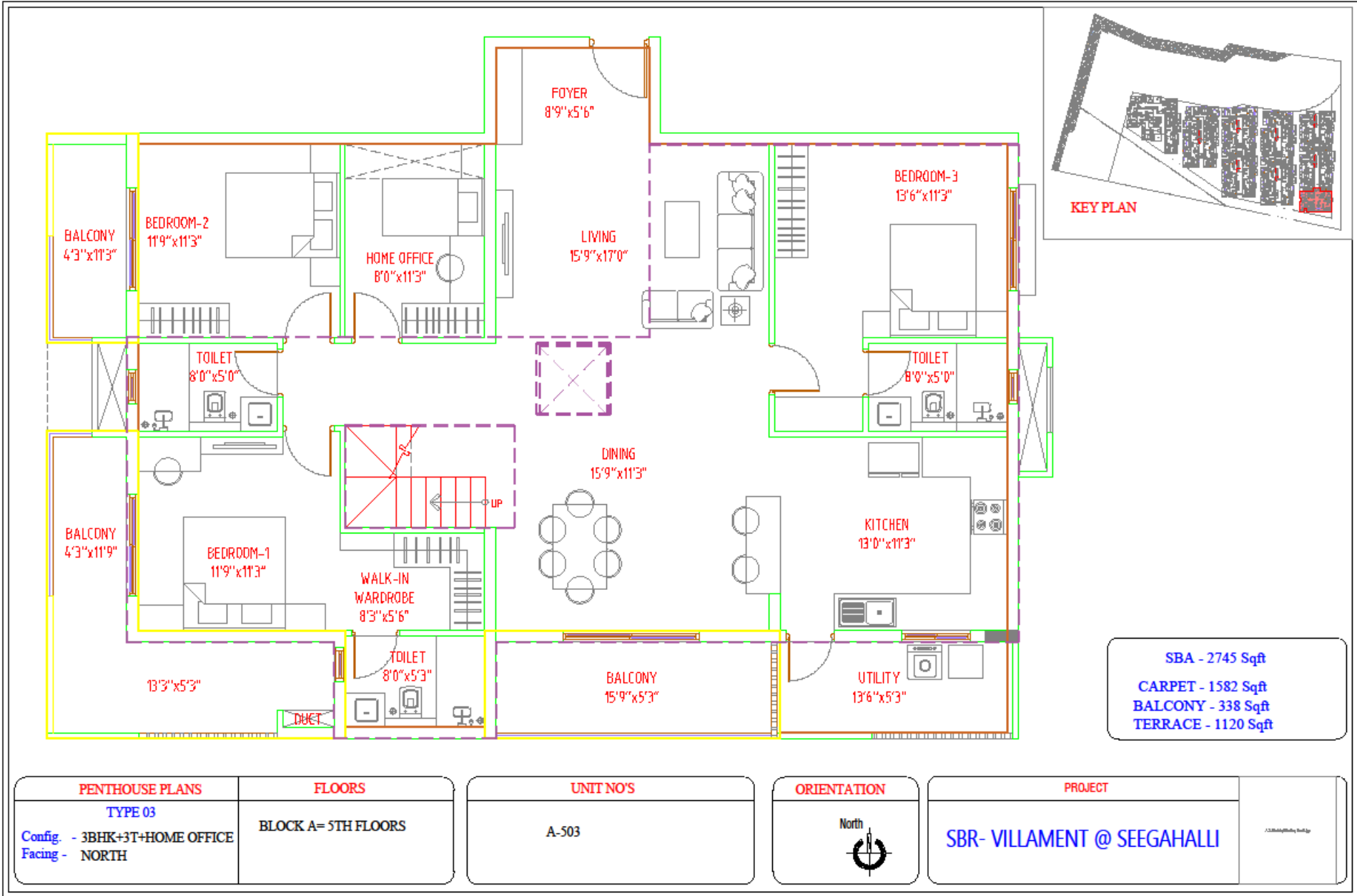
SBA - 2345 Sqft  
 CARPET - 1303 Sqft  
 BALCONY - 336 Sqft  
 TERRACE - 1180 Sqft

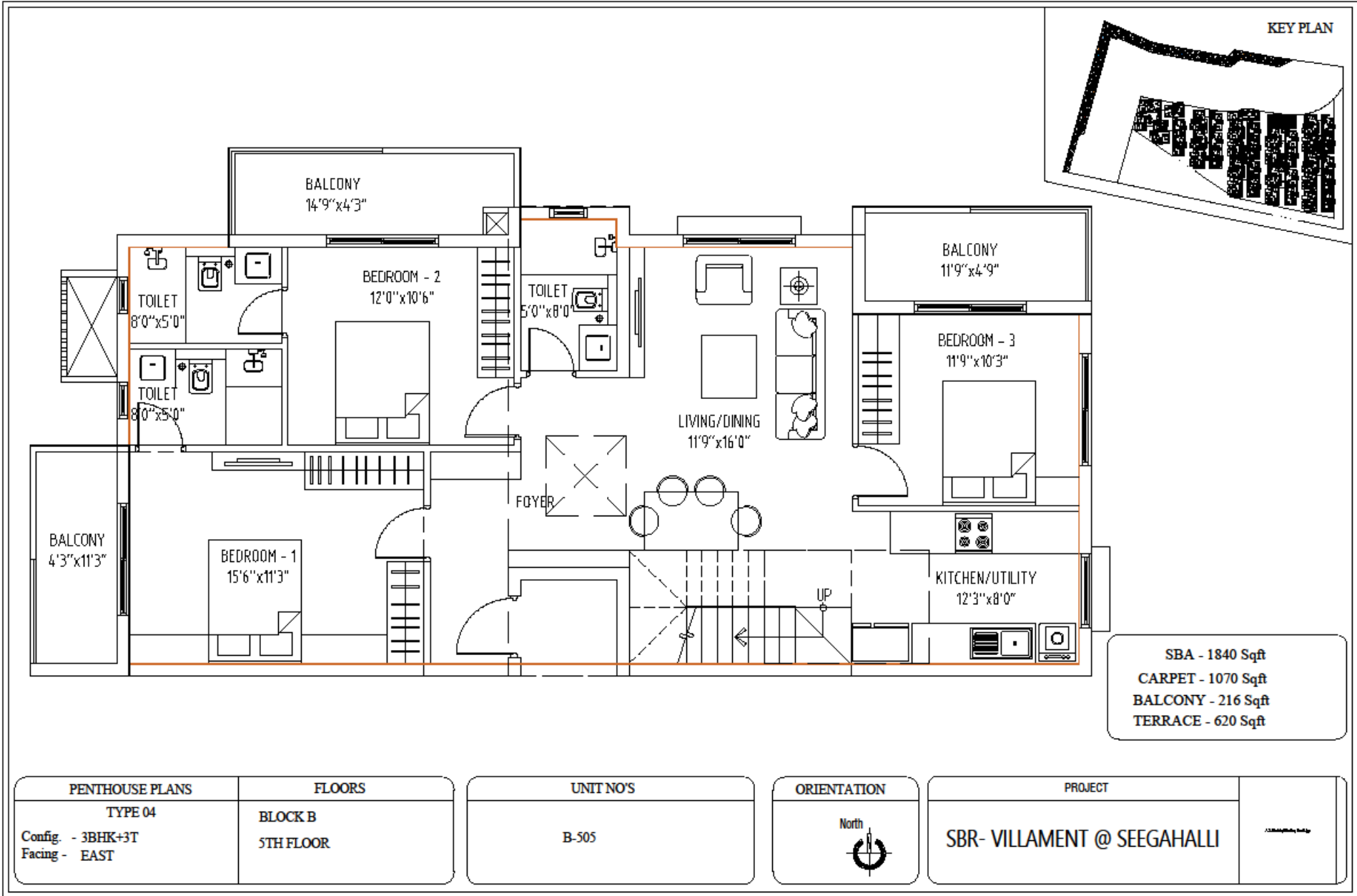
PENTHOUSE PLANS	FLOORS
TYPE 02	BLOCK A= 5TH FLOORS
Config - 3BHK+3T	BLOCK B= 5TH FLOORS
Facing - EAST	BLOCK C= 5TH FLOORS

UNIT NO'S	
A-504,505	C-503,504
B-503,504	

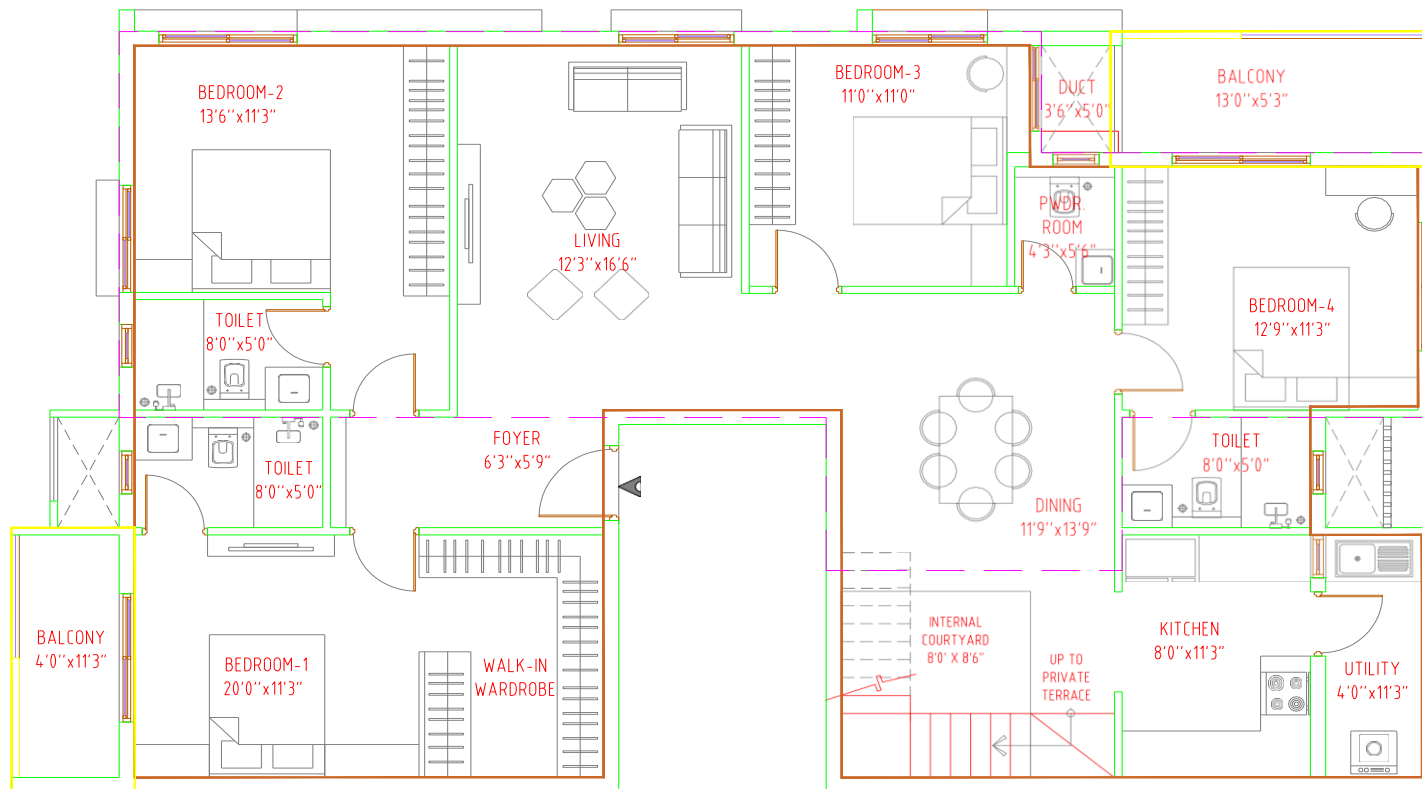


PROJECT
SBR- VILLAMENT @ SEEGAHALLI





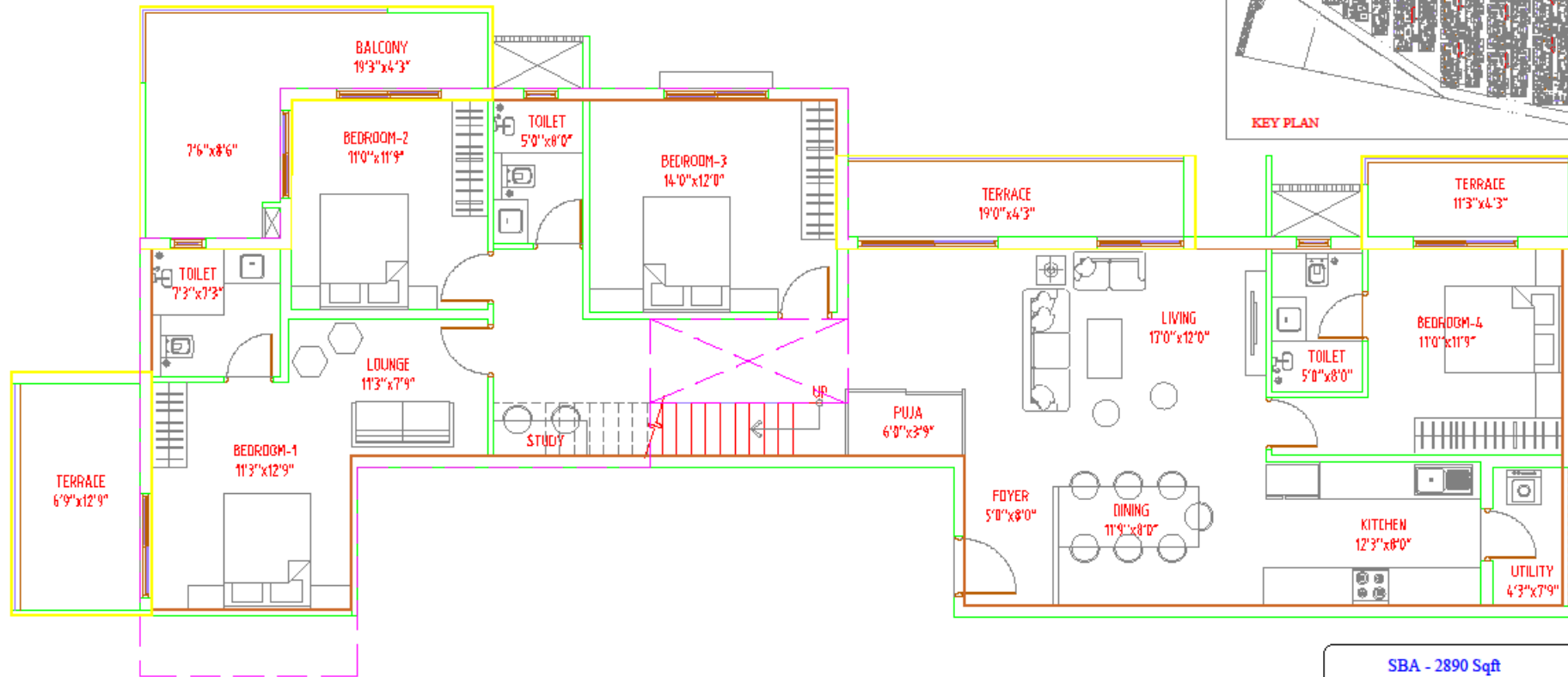




KEY PLAN

SBA - 2440 Sqft  
 CARPET - 1555 Sqft  
 BALCONY - 150 Sqft  
 TERRACE - 990 Sqft

<p><b>PENTHOUSE PLANS</b></p> <p><b>TYPE 05</b></p> <p>Config - 4BHK+4T          Facing - EAST</p>	<p><b>FLOORS</b></p> <p>BLOCK D          5TH FLOOR</p>	<p><b>UNIT NOS</b></p> <p>D-501</p>	<p><b>ORIENTATION</b></p>	<p><b>PROJECT</b></p> <p><b>SBR- VILLAMENT @ SEEGAHALLI</b></p>
--	--	-------------------------------------	---------------------------	---



KEY PLAN

SBA - 2890 Sqft  
 CARPET - 1565 Sqft  
 BALCONY - 455 Sqft  
 TERRACE - 835 Sqft

PENTHOUSE PLANS
TYPE 06
Config. - 4BHK+4T
Facing - WEST

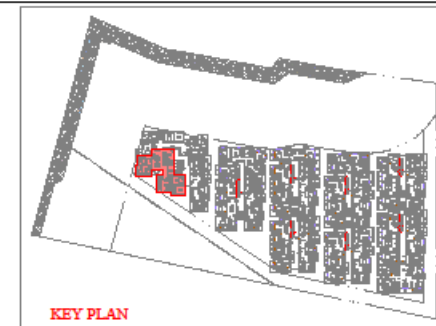
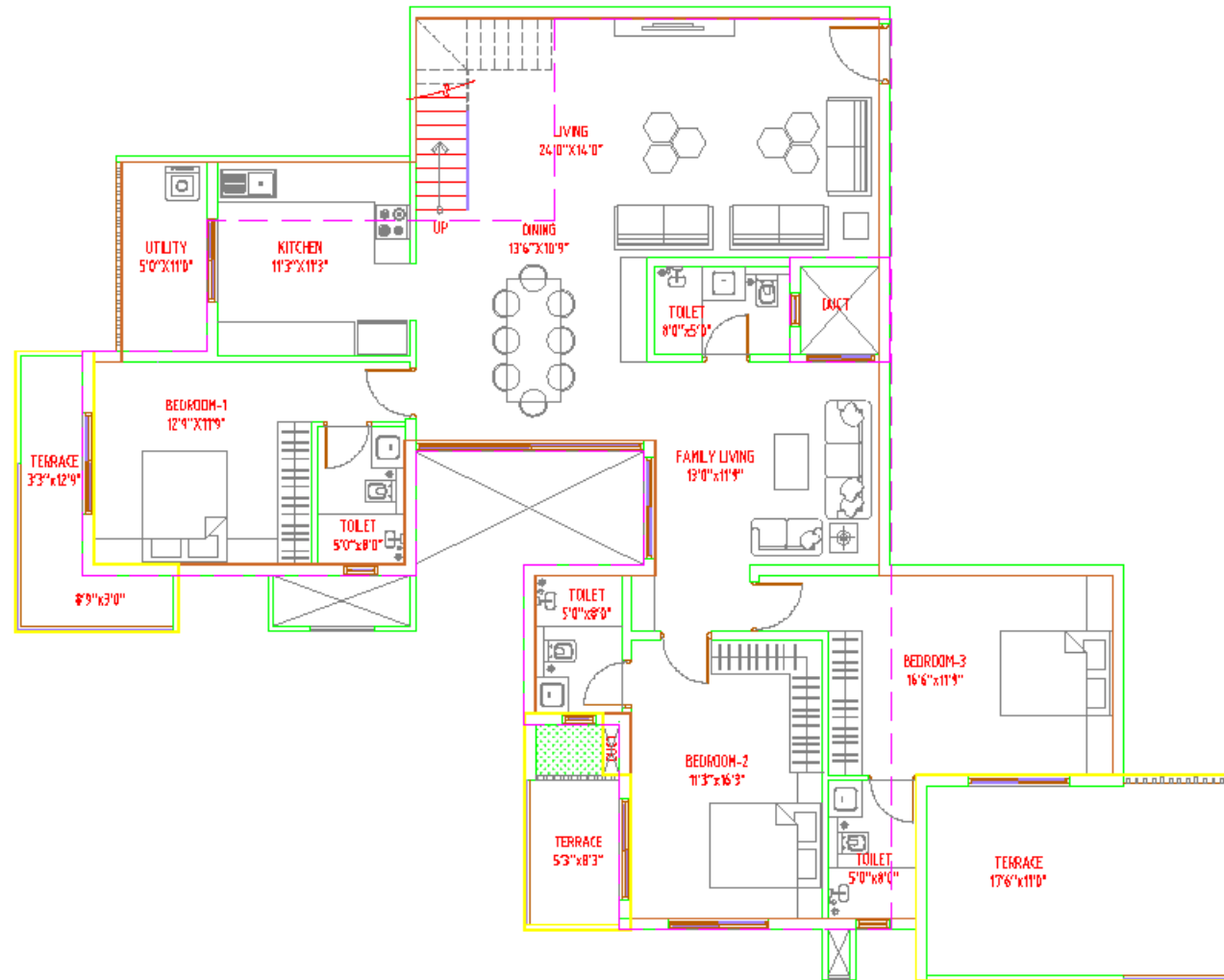
FLOORS
BLOCK E
5TH FLOOR

UNIT NO'S
E-501

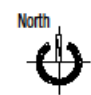
ORIENTATION
North 

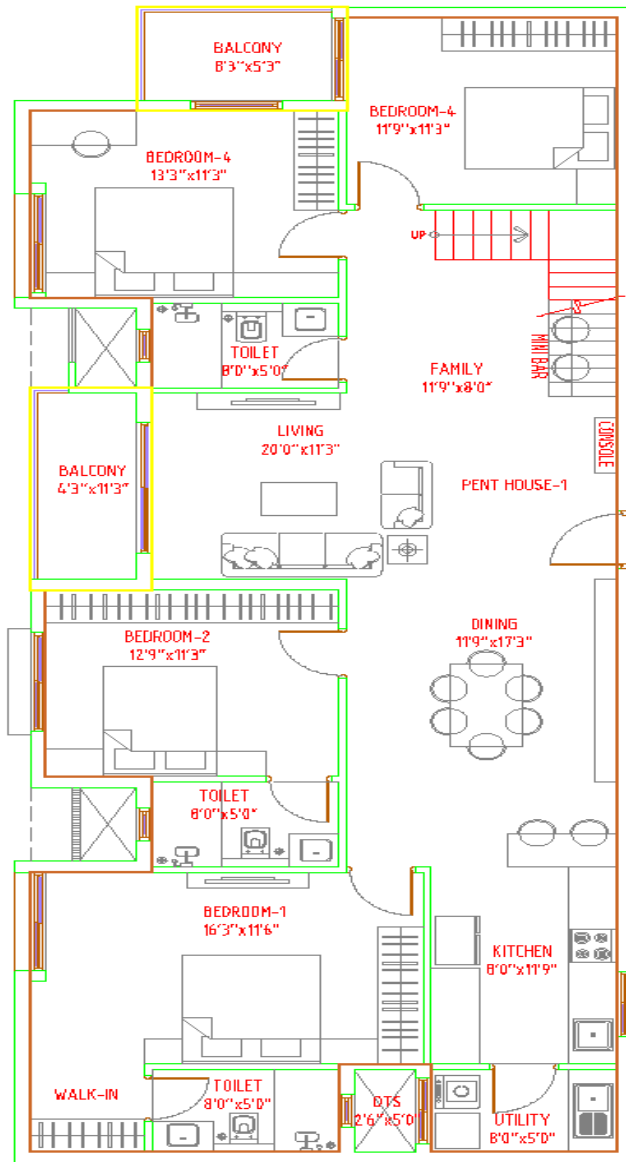
PROJECT
SBR- VILLAMENT @ SEGAHALLI

©2018 All Rights Reserved



**SBA - 2980 Sqft**  
**CARPET - 1695 Sqft**  
**BALCONY - 391 Sqft**  
**TERRACE - 1400 Sqft**

PENTHOUSE PLANS	FLOORS	UNIT NO'S	ORIENTATION	PROJECT	
<b>TYPE 07</b> Config. - 3BHK+3T+HOME OFFICE Facing - EAST	BLOCK E 5TH FLOOR	E-503	North 	<b>SBR- VILLAMENT @ SEGAHALLI</b>	<small>© 2014 All Rights Reserved</small>



KEY PLAN

SBA - 2300 Sqft  
 CARPET - 1490 Sqft  
 BALCONY - 120 Sqft  
 TERRACE - 1215 Sqft

PENTHOUSE PLANS	FLOORS
TYPE 08	BLOCK D= 5TH FLOORS
Config - 4BHK+3T	
Facing - EAST	

UNIT NO'S  
 D-503



PROJECT  
 SBR- VILLAMENT @ SEEGAHALLI





**Structure:**

All elements of structure are designed for Earthquake Resistant compliance to SEISMIC ZONE - II Sub structure - RCC framed structure  
Super structure - 1 Basement + Ground + 4 storied R.C.C framed structure

**Masonry walls:**

Concrete block masonry walls 200mmThick- External Wall Concrete block masonry walls 100mmThick- Internal Wall

**Plastering/Rendering:**

Internal walls- Cement Mortar plastering /Gypsum plaster. External walls - Cement Mortar plastering.

**Doors:**

Main Door: Main Door-37~40mmTh Hardwood /Engineered Frame, Solid Core shutter, Engineered veneered on both sides.

Other Doors: 32mm Th Hardwood /Engineered Frame, Honeycombed- Hollow core shutter, Laminated on both sides.

Toilet Doors: 32mmTh Hardwood/Engineered door frames, hollow core shutter. Plastic Laminated finish from Inside.

Brushed SS hardware for all doors.

All other external doors (Sliding/Openable) to be of UPVC extruded frames-2.5track with provision for mosquito mesh.

**Windows:** UPVC Sliding windows with clear glass – 2.5 track with provision for mosquito mesh.

**Flooring:**

Living / Dining - High Quality Vitrified tiles flooring and skirting.

Kitchen / Utilities - High quality vitrified tiles.

All Bed Room - laminated Wooden Flooring – Green panel.

Balcony - Antiskid ceramic tile /vitrified tiles with skirting.

Common areas - Combination of Granite flooring & or high-quality Vitrified tiles.

Staircase - Stringer Beam Metal Staircase with Wooden tread

**Kitchen:**

Plumbing Provision for one large S.S. sink with drain board.

Superior quality ceramic wall tiling/Granite (DADO) for 2 feet height above counter.

Provision for water purifier connection

Superior quality ceramic wall tiling/Granite (DADO) for 2 feet height above counter.

Provision for water purifier connection.

**Water Supply:**

Water is treated & softener, supplied thru Gravity /hydro-pneumatic system.

STP, treated water used for flushing & landscaping.

Rain water harvesting techniques to be used to supplement Domestic water requirement & recharge bore wells.

**Toilet:**

Granite vanity counters.

Premium Branded C.P fittings & fixtures.

Kohler or Equivalent branded Wash basin &

Wall Mounted Water closet.

Premium branded glazed/ Ceramic or Vitrified tiles for Walls, up to the false ceiling height.

Premium Branded Ceramic/Vitrified tiles Flooring for the floor.

CPVC pipes for hot water & UPVC pipes for cold-water line Suspended pipes in the toilet above false ceiling.

Provision for Geyser above false ceiling in every bath room.

Dual piping system for flushing & water supply.

**Painting:**

OBD/ Plastic Emulsion paint (Low VOC) for internal walls & ceilings.

Exterior grade paint (Low VOC) /cladding for external walls.

Enamel painting for Metal & Wood surfaces.

**Landscape:**

Peripheral landscape with trees and plants along site

Landscaped Pool Deck area

Private Landscaped decks

Landscape between Building blocks

**Electrical:**

ISI Mark Copper wires.

Premium Modular switches.

Sufficient points in all rooms.

Provision for Electrical point for split AC in Living/Dining and Master Bedroom.

BESCOM power:

2.5KW for 2BHK +2T units

3.5KW for 3BHK + 3T units

4KW for 3BHK + 3T + Home Office units & 3BHK+ 4T units

5KW for 4BHK + 4T units

**DG BACKUP:**

100% DG back up for common areas & facilities.

DG back up of 1.5KW for all Residential units.

**Elevators:**

8Nos premium brand elevators for easy access to all floors.

**Amenities:**

CCTV system for Security surveillance.

**CLUB House:**

Badminton Court

Multi-purpose Hall /Banquet Hall

Gymnasium

Indoor Games Area.

**Outdoor:**

Multicourt Play Area

Kids Play Area

Cricket Practice Net

Skating Rink

Jogging Track

Amphitheatre

Seating Plaza

Swimming Pool – Kids and Adult with Pool Deck

Party Lawn

Koi Pond

Yoga/Feeding deck

Aromatic Garden







# SBR FLORENZO

Seegehalli, Whitefield

RERA : PRM/KA/RERA/1251/446/PR/091123/006405

Phone : 9164 209 209

Email : [info@sbrgroup.in](mailto:info@sbrgroup.in)