

A LIFETIME HOME.  
A ONCE-IN-A-LIFETIME OPPORTUNITY.



I N T R O D U C I N G

P A S S C O D E

**MANHATTAN**

**#WhatAWonderfulWorld**



## TWO DECADES OF BUILDING OUR LEGACY, AND THE FUTURE.

In 2001, with Mr. Vijay Khetan at the helm, the VKG (Vijay Khetan Group) was founded with only one aim - to revolutionize the real estate industry. From day one, we have strived to provide an unmatched, best-in-class experience. With everything we have built, we are building on our core values of trust, commitment, integrity, self-discipline and highly entrepreneurial spirit.

Today, the VKG group is one of the most trusted names in the realty industry.

We have always believed in versatility, which is why, we haven't restricted ourselves to a particular segment of the industry. You may find our footprint across various categories, from commercial spaces, to residential developments, leasing premises, IT parks, TDR, hospitality and more.

With evolving times, we too have adapted to new-age technology, which has helped us soar higher to deliver projects of global standards that stand tall for generations.

Ready to usher in a new phase of excellence, VKG is now foraying into infrastructure, hospitality and mall development.

**VILE PARLE'S  
FIRST  
GATED COMMUNITY**



## THE JEWELS IN THE CROWN

VKG	VKG	VKG	VKG	VKG	VKG
CORPORATE CENTRE	CORPORATE PRIDE	CORPORATE SCAPE	CORPORATE POINT	PASSCODE BEVERLY HILLS	PASSCODE MANHATTAN
COMMERCIAL	COMMERCIAL	COMMERCIAL	COMMERCIAL	RESIDENTIAL	RESIDENTIAL
JB NAGAR, ANDHERI-EAST	ANDHERI-EAST	GOREGAON-EAST	ANDHERI-EAST	ANDHERI-EAST	VILE PARLE-EAST

## UPCOMING PROJECTS:

- IGATPURI TOWNSHIP (NASHIK)
- GOREGAON EAST (MUMBAI)
- CHAKALA PHASE II (MUMBAI)
- MAROL VKG ESTATE PHASE II (MUMBAI)
- WORLI (MUMBAI)
- BKC KAPADIA NAGAR (MUMBAI)
- GHATKOPAR EAST (MUMBAI)
- ULHASNAGAR

18  
Years  
OF  
DEVELOPMENT

14  
COMPLETED  
PROJECTS

16  
Million  
SQUARE FEET OF  
UPCOMING DEVELOPMENT

Millions  
OF HAPPY  
CUSTOMERS

## WHERE THERE'S TRUST, THERE'S SUCCESS

His keen observation skills and astounding clarity have been the reasons  
he was not only successful in acquiring several distressed assets but also  
redeveloping them into profitable projects.



"Vocational Excellence Awards" to Shri Vijay Khetan from  
Rotary Club of Mumbai North End for his outstanding achievements  
& Immense Contribution in the field of Social Services.

Award by the "Paropkar Group- 2015" for "Famous Builders".



**VILE PARLE'S  
FIRST  
GATED COMMUNITY**



**VILE PARLE'S  
FIRST  
GATED COMMUNITY**

LET YOUR HOME  
BE A PART OF THE  
CITY'S SKYLINE.

Experience an elevated lifestyle, combined with spacious living

at *Vile Parle's first ever gated community*, **Passcode Manhattan**.

The 12-storey towers are centrally located and provide seamless  
connectivity to every major part of the city.

Its aesthetically-designed clubhouse comes with best-in-class amenities,

like fitness centre, swimming pool, multipurpose hall and many more.

Overlooking an acre of open greens, life at Passcode Manhattan

is nothing short of a dream.



**VILE PARLE'S  
FIRST**  
GATED COMMUNITY



## HOMES DESIGNED TO MATCH YOUR COMFORT.

At Manhattan, you'll never have to adjust. Here, every feature has been designed around your and your family's needs. From being Vaastu-compliant to having spacious parking spots, Passcode Manhattan makes life truly comfortable, convenient and wonderful.

## PROJECT HIGHLIGHTS

- 12 Storey Towers
- Vastu Compliant Spacious 2 & 3 BHK Homes
- Designer & AC Entrance Lobby
- High Speed Elevators
- Ample Car Parking Space
- Domestic Help's WC
- Earthquake Resistant RCC Structure
- Full Height Windows Filtering In Maximum Day Light
- Aesthetically Designed Club House

## HOME IS WHERE YOU FEEL THE SAFEST.

### SAFETY & SECURITY FEATURES



FULLY INTEGRATED  
VIDEO DOOR PHONES



CCTV FACILITY AT  
ENTRANCE & COMMON AREAS



INTERCOM  
FACILITY



ADVANCED  
FIREFIGHTING SYSTEMS

## NOTHING IS EVER FAR AWAY FROM PASSCODE MANHATTAN

Be it the international airport, reputed schools, city's best hospitals, Western Express Highway or business hubs, all important landmarks are just minutes away from here.



NEAREST HIGHWAY

Western Express Highway



INTERNATIONAL AIRPORT

Chhatrapati Shivaji International Airport



NEAREST METRO STATION

• Western Express Highway Metro Station  
• Chokala Metro Station



HOSPITALS

• Sanjeevani Hospital  
• Brahma Kumari Global Hospital & Research Centre



HOSPITALITY

• ITC Maratha • Sabore Star  
• The Laska • J. W. Marriott



MALLS & MULTIPLEXES

• Carnival Cinemas • Shoppers Stop



SCHOOLS

• Bombay Cambridge School • Holy Family High School  
• Canossa High School





CLUB HOUSE



GYM



SWIMMING POOL

ENJOY  
THE VACATION LIFE  
EVERY DAY.

The aesthetically designed clubhouse at Passcode Manhattan is home to state-of-the-art amenities, that are no less than that of a resort's. From swimming pool to fitness centre, jogging track to steam room, you will find everything that brings you joy, helps you live healthy and relaxes you here.



## CLUB HOUSE FEATURES

- Fitness Centre
- Swimming Pool
- Multipurpose Hall with Open Terrace
- Relaxing Steam Room
- Locker Facility
- Shower Room
- Kid's Play Area
- Jogging Track
- Recreational Area
- Extensive Lawn
- Gazebos for Outdoor Seating

ROOFTOP AMENITIES.  
FOR A TOP-CLASS EXPERIENCE.



- Solar Workstations
- Kids Play Area
- Rock Climbing Wall
- Senior Citizens Zone
- Board Games Zone
- Meditation & Outdoor Gym Area
- Barbecue Zone & Sit Out Area
- Party Zone
- Turf

**VILE PARLE'S  
FIRST  
GATED COMMUNITY**



PASSCODE  
**MANHATTAN**

#WhatAWonderfulWorld

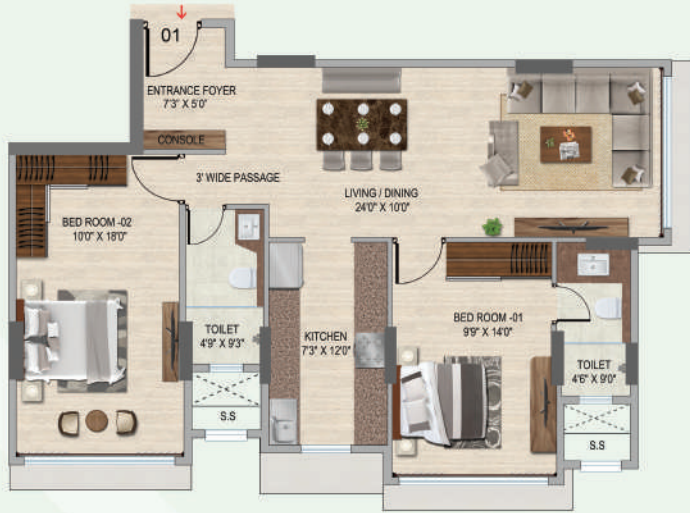
**VILE PARLE'S  
FIRST  
GATED COMMUNITY**

SPACIOUS 2 & 3 BHK HOMES'

Passcode Manhattan, Off Sahar Road, Vile Parle East, Mumbai 400099  
Phone : 02241652535 | vkindia.com | Microsite : passcodemanhattan.com



UNIT PLAN WING-A 2 BHK



KEY PLAN

**MAJESTIC ROYALE** | RERA CARPET AREA  
818 SQ. FT.



UNIT PLAN WING-A 2 BHK



KEY PLAN

**MAJESTIC ROYALE** | RERA CARPET AREA  
820 SQ. FT.



UNIT PLAN WING-A 3 BHK



KEY PLAN

**SIGNATURE ROYALE** | RERA CARPET AREA  
1086 SQ. FT.



UNIT PLAN WING-A 2 BHK



KEY PLAN

**MAJESTIC ROYALE** | RERA CARPET AREA  
823 SQ. FT.



UNIT PLAN WING-B 2 BHK



KEY PLAN

**MAJESTIC ROYALE** | RERA CARPET AREA  
825 SQ. FT.



UNIT PLAN WING-B 3 BHK



KEY PLAN

**SIGNATURE ROYALE** | RERA CARPET AREA  
1099 SQ. FT.



UNIT PLAN WING-B 3 BHK



KEY PLAN

**SIGNATURE  
ROYALE**

RERA CARPET AREA  
1079 SQ. FT.



UNIT PLAN WING-B 2 BHK



KEY PLAN

**MAJESTIC  
ROYALE**

RERA CARPET AREA  
817 SQ. FT.





UNIT PLAN WING-C 3 BHK



**SIGNATURE**

RERA CARPET AREA  
870 SQ. FT.



UNIT PLAN WING-C 3 BHK



**SIGNATURE**

RERA CARPET AREA  
920 SQ. FT.



UNIT PLAN WING-C 2 BHK



KEY PLAN

**SIGNATURE**

RERA CARPET AREA  
705 SQ. FT.



UNIT PLAN WING-C 2 BHK



KEY PLAN

**SIGNATURE**

RERA CARPET AREA  
685 SQ. FT.





Vijay Khetan Group (VKG), 7th Floor, Corporate Centre,  
Andheri-Kurla Road, Andheri E, Mumbai - 400 059.

This communication is purely conceptual and not a legal offering. The information contained in this communication is only indicative. All images are artistic conceptualization for illustration purposes only and do not purport to exact replicate the offering. The furniture, fixtures, interior work, design options and fittings as displayed in this communication are for showcasing purpose only and do not form part of standard amenities to be provided in the units/offers. The unit/offers are offered for sale as uncompleted and registered agreement for sale between the promoter and the purchaser alone will be final and binding. The landscape, vegetation features are imaginary and actuals on site would differ. Promoter reserves its right to upgrade, modify, relocate, enhance, make changes, delete or alter the common amenities/ Balcony floor and /or height of the building and/ or any other features or as may be required as per approvals and permissions granted by the concerned authorities from time to time. This project is registered under Maharashtra No PS/BO/005340 available at <https://mahares.in/maharesonline.gov.in>.