

ERAWAH
IPSA
GHATKOPAR-EAST

5 SHOPS | 60 LUXURIOUS APARTMENTS
1, 1.5 & 2 BHK FLATS | 16 STOREYED TOWER



LUXURY
APARTMENTS



PRIME
LOCATION



QUALITY
CONSTRUCTION

A Desire...
for the Best



ERAWAH IPSA GHATKOPAR-EAST

Ghatkopar since several years, has shown tremendous growth in real estate development, thus creating huge potential for an end user as well as an investment perspective. Ghatkopar gifts you with a perfect blend of modern & traditional lifestyle. This neighbourhood is strategically located in the heart of Mumbai. At Erawah IPSA, one can enjoy the best urban connectivity across all the directions of Mumbai, since it is located in very close proximity to Eastern Express Highway, LBS Marg, SCLR & Eastern Freeway. For example, it takes 31 minutes to Fort via the Eastern Freeway and just 20 minutes to BKC via the Santa Cruz Link Road. Erawah IPSA, also enjoys vert close proximity to both Ghatkopar metro & railway stations. The future development of the current airport and the proposed new airport will further accelerate the connectivity.

Rejuvenation, will never be a problem for someone staying at Erawah IPSA. Ghatkopar boasts with rejuvenation hubs like the famous "R-City" mall, mouth-watering "Khaogalli" to satisfy one's taste-buds & spectacular theatres like PVR & INOX acting like stressbusters. Adding to this, one can easily reach to health clubs like "Jolly Gymkhana" within few minutes from Ipsa. With YMCA complex at doorstep, one can explore more than 15 amenities like table tennis, chess, basketball, gymnasium etc at Ipsa.

When it comes to nature, at IPSA one will always get a chance to breathe fresh air since, it is very close to Subhash Chandra garden, thus also getting rewarded with outdoor amenities like Jogging track, Senior citizen's sit-out, kid's play area etc.

Thus, Erawah IPSA at Ghatkopar-East becomes an apt address to relish one's life's happiness.

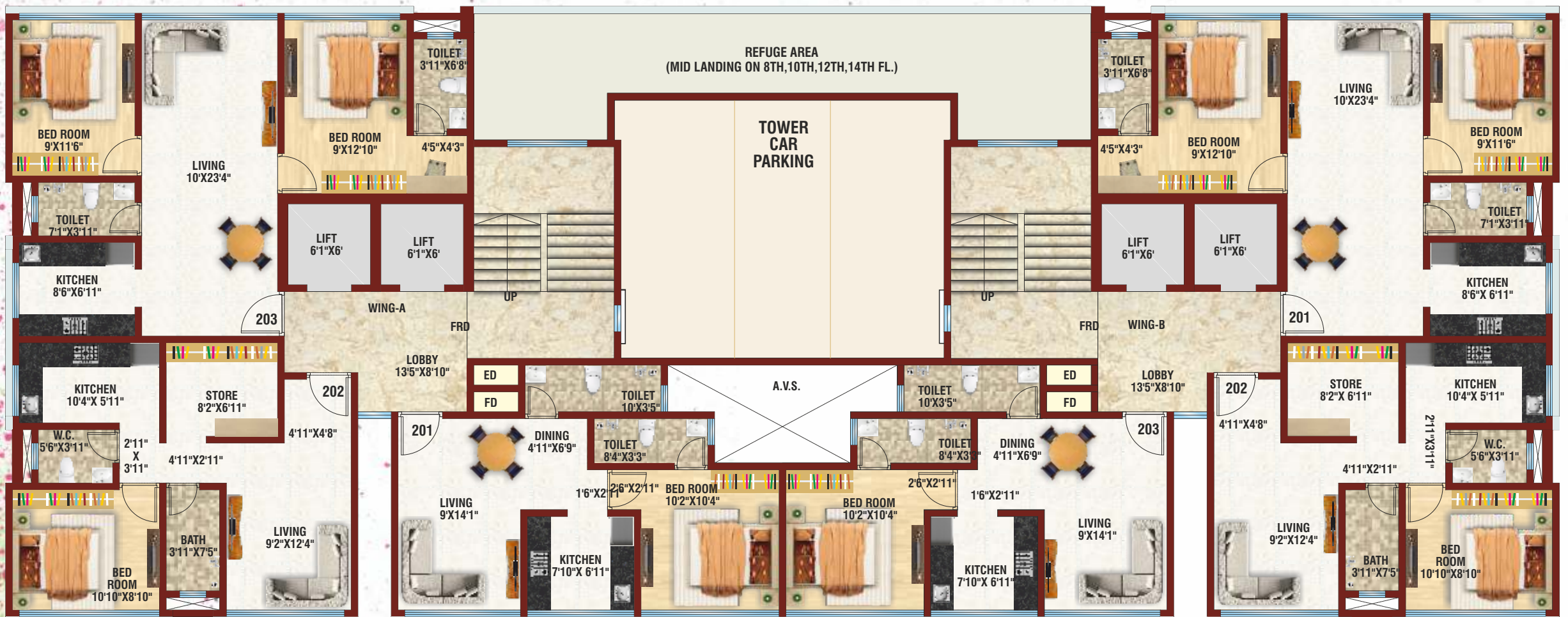
AMENITIES

COMMON AMENITIES :

- Designer AC entrance lobbies with Italian Marble
- CCTV Surveillance
- Automated Car Parking Tower
- Landscaped Terrace and Common Areas
- Branded High Speed lifts with Power Backup
- Earthquake Resistant Structure
- Rainwater Harvesting & Bore well for continuous water availability
- Modern Elevation

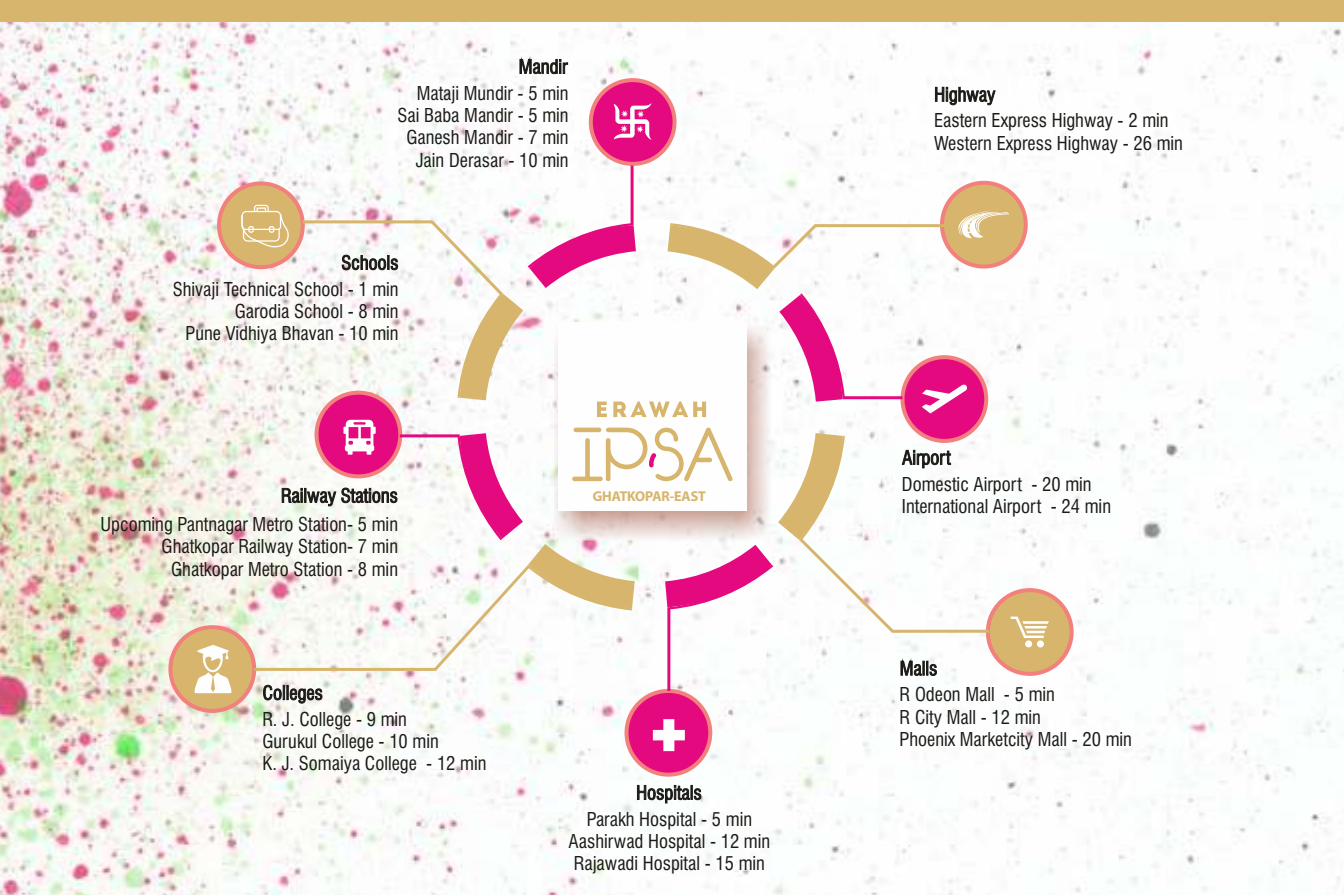
INTERNAL AMENITIES :

- 2'x2' Vitrified Flooring
- Concealed Electrical Wiring
- Designer Bathrooms with branded fittings.
- Teak door frames
- Marble window frames
- Heavy Duty anodized sliding windows
- Gypsum Finished walls
- Luxury Emulsion Eco-friendly Paint
- AC and Wifi ready homes
- Rain Water Shower in the Master Bedroom
- Concessional Packages for Fully Furnished Homes.



TYPICAL FLOOR PLAN (2ND TO 15TH)





Few minutes away from Upcoming Pant Nagar Metro Station (Line No.4)

LUXURY BY
 Building Houses Building Trust[®]
HAWARE

MARKETING PARTNER



To book a Site Visit, please call | +91 76666 33323 | www.haware.com
 416, Vardhaman Market, Sector-17, Vashi, Navi Mumbai-400 705. T : 022-6791 9800

Note : All the plans, drawings, amenities, facilities, etc. are subject to the approval of the respective authorities and would be changed if necessary. The discretion remains with the Developers . All renderings and maps are artist's conception and not actual depiction of the buildings, walls, driveways or landscaping and Developers reserve the right to make changes at any time, without notice or obligation to the information contained in this Brochure including and without limitation to areas, amenities and specifications. Developers does not warrant or assume any legal liability or responsibility for the accuracy, completeness or usefulness of any information disclosed.