



KALYAN SQUARE
INVEST IN THE FINEST

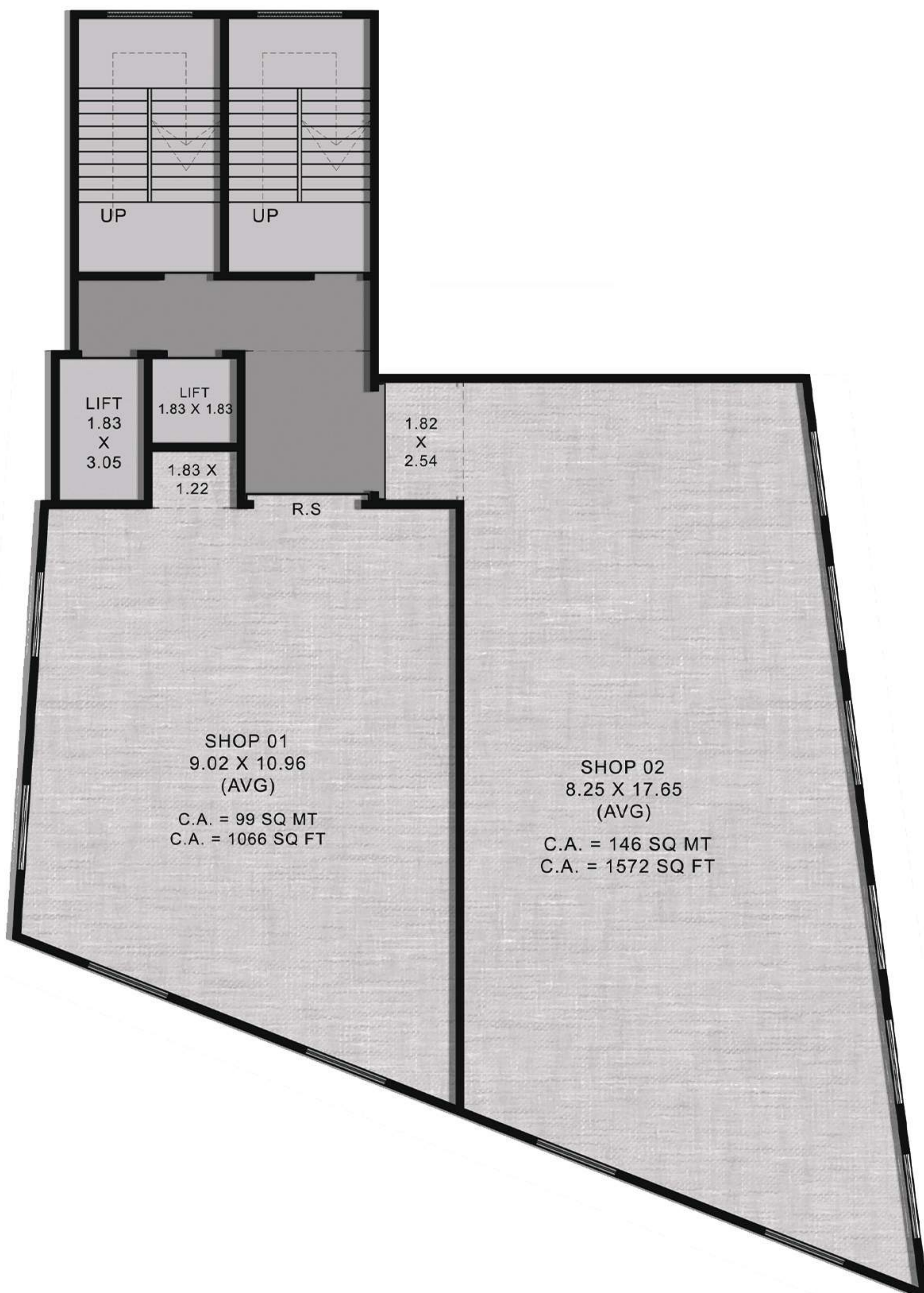
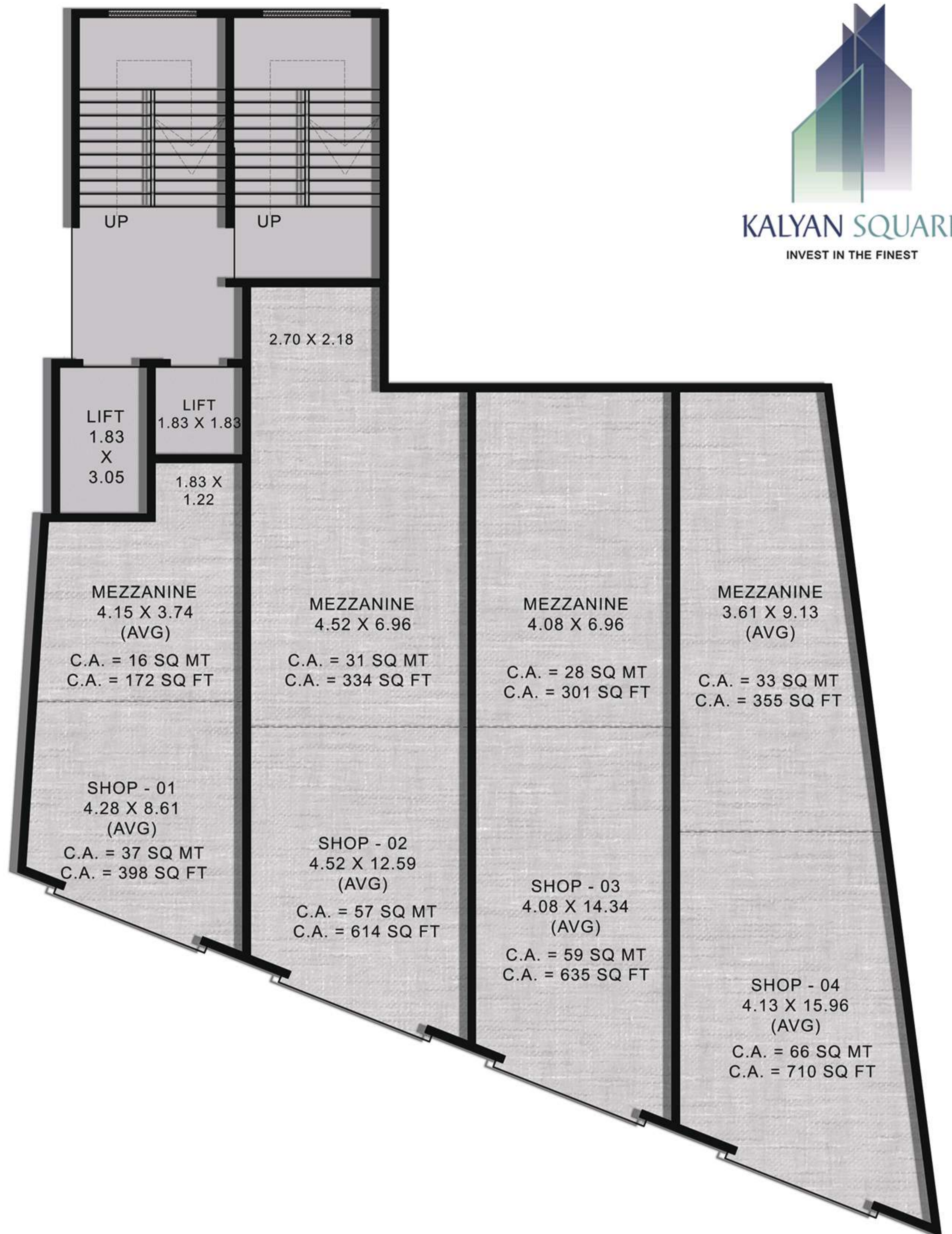


KALYAN SQUARE

TANISHQ

TANISHQ

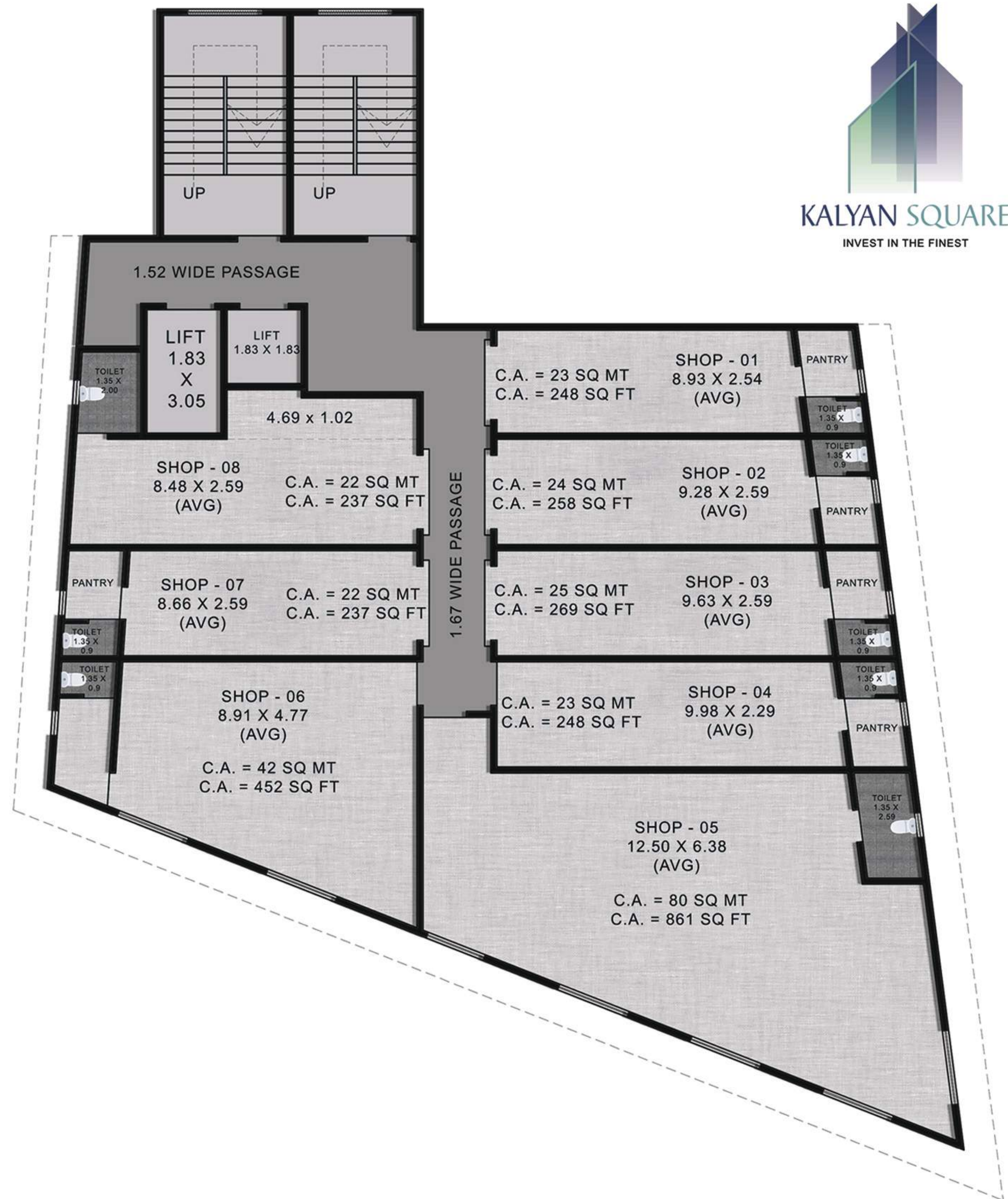
GROUND FLOOR PLAN



FIRST FLOOR PLAN



TYPICAL FLOOR PLAN



PROJECT HIGHLIGHTS

- Just beside proposed metro station.
- Washroom and Pantry provision for each office unit.
- Virtually column free office units.
- Provision for Stretcher lift.

IDEALLY SUITABLE FOR:

- Clinics.
- Hospitals (provision of Stretcher Lift).
- Pathology lab.
- Advocates.
- Service Consultants.
- Distributors and Traders.
- IT Professionals.
- Commercial Offices.
- Agencies.
- Financial Institutions, Tutorials and Classes.

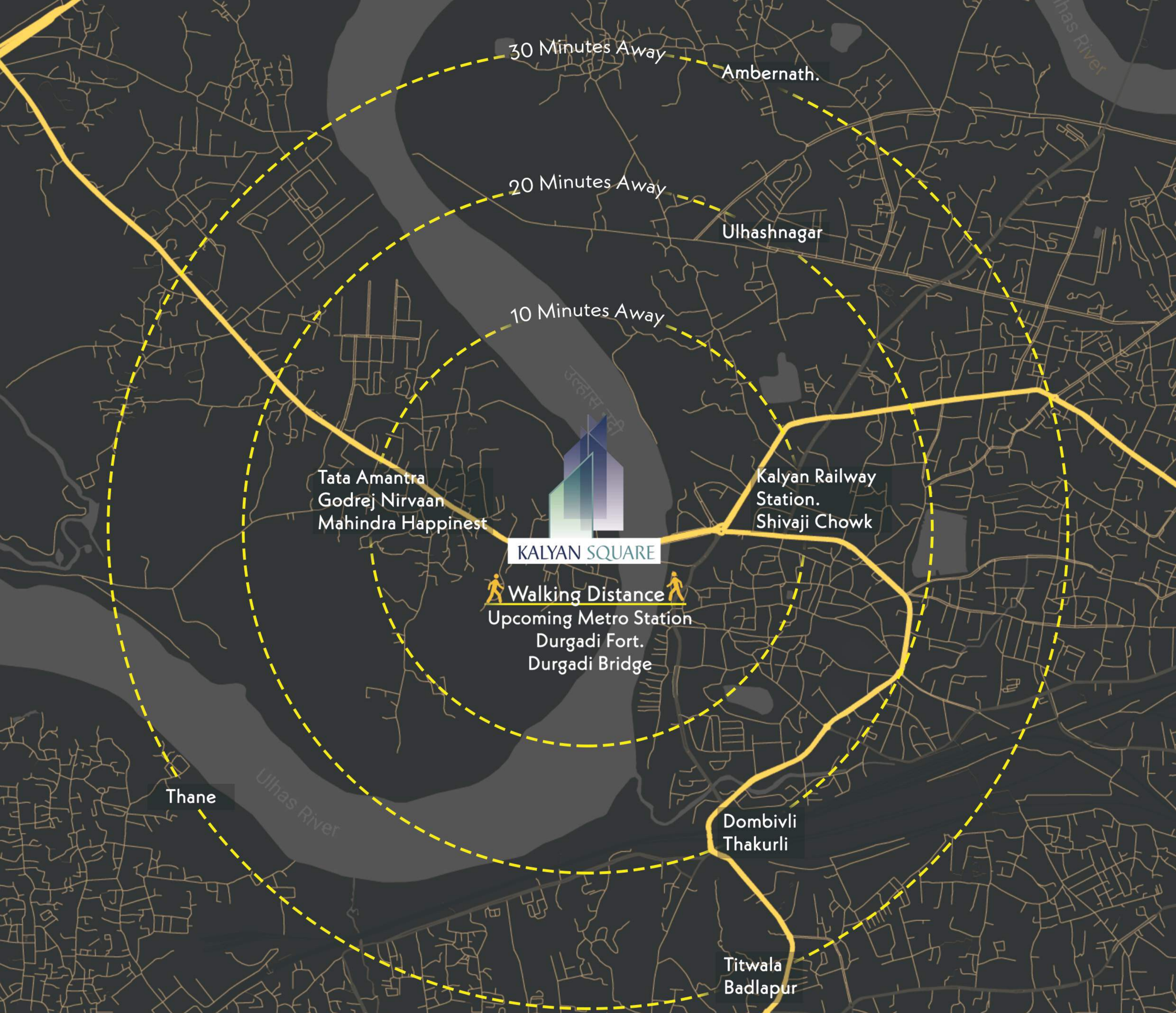


KALYAN SQUARE

TANISHQ

TANISHQ





DESIGNED FOR CONNECTIVITY.

One of the biggest advantage of Kalyan Square is its connectivity. While its road-touch location offers easy access to all parts of Mumbai and other cities, It also provides quick connectivity to the residential pockets of the city, making it hassle-free for employees to commute to work every day.

Proposed
Metro
Station
100 Mts



Railway
Station
2.4 kms



Banks
300 Mts



Metro
Mall
2.6 Kms



Shivaji
chowk
1.6 Kms



MAHA RERA
P51700048508

Contact No: 828 633 4477

www.kalyangroups.com

Site Address: Near Durgadi bridge, Kalyan- Bhiwandi Road Kongaon- 421301