



*At the heart of vibrancy  
everything comes alive*



NCC Urban Parkview is a G+13 floors tower with unique blend of residential and commercial spaces by reputed promoters. While G+2 floors are dedicated for shopping experience, the top 11 residential floors take your lifestyle higher.

NCC Urban Parkview rises above the ordinary with stunning facade, intelligent space planning and plush commercial spaces. Detailed design put the project in a class of its own. Separate access to residential and commercial segments, thoughtful features, terrace gardens and spacious parking bring in an enhanced comfort level.



*It's Rare. Refined. Regal.*



**77 Luxury  
Apartments**



**Sizes from  
1276 to 1638 Sft**



**Clubhouse with  
Multipurpose Hall  
@ 2<sup>nd</sup> floor**



**Swimming  
Pool**



**Yelahanka  
New Town**

# Premium on space aesthetics

A separate entrance for residential wing with lounge make your home one-of-a-kind. As you enter the tower, spacious corridors take you to spacious lobby of the lift that lead to your home. You are pampered to extravaganza as you step into chic apartments. Hi-end brands, silken smooth walls, large spaces set the mood for warm relationships. The promoters' experience reflect on functional design and aesthetic appeal of each apartment.



## A GRAND WELCOME

The grand lobby welcomes you to a life of splendour and expanse that awaits you in your exclusive abode. It makes a statement of refined taste and subtle elegance: a befitting start for the magnificence ahead.

**Seating area || Staircase & 2 Highspeed Lifts**

# Elegant Living Spaces

NCC Urban Parkview is built in sprawling premises to offer an enviable lifestyle to match your aspiration. Large apartments, sun soaked spaces, shining interiors and thoughtful amenities fill excitement at every moment. Luxury comes in apartments that **measure 1276 to 1638 Sft** areas to meet your expectations. Supreme quality, aesthetic refinement in these apartments treat you to royalty also designed to offer enhanced daylight, ample ventilation and spacious balconies for an experience that is truly exceptional





# Luxury apartments that exude opulence.

Our spacious 2 and 3 BHK apartments welcome you to a life of unrestrained luxury. We offer the luxury of space and the privilege of privacy in one masterpiece of an address.







**NCC**  
Urban  
parkview

Well crafted for new age living.

Covered balcony for privacy

Spacious interiors with ample  
natural light and better air ventilation.

CCTV surveillance

24x7 security

Vaastu compliant apartments

Waste water treatment plant

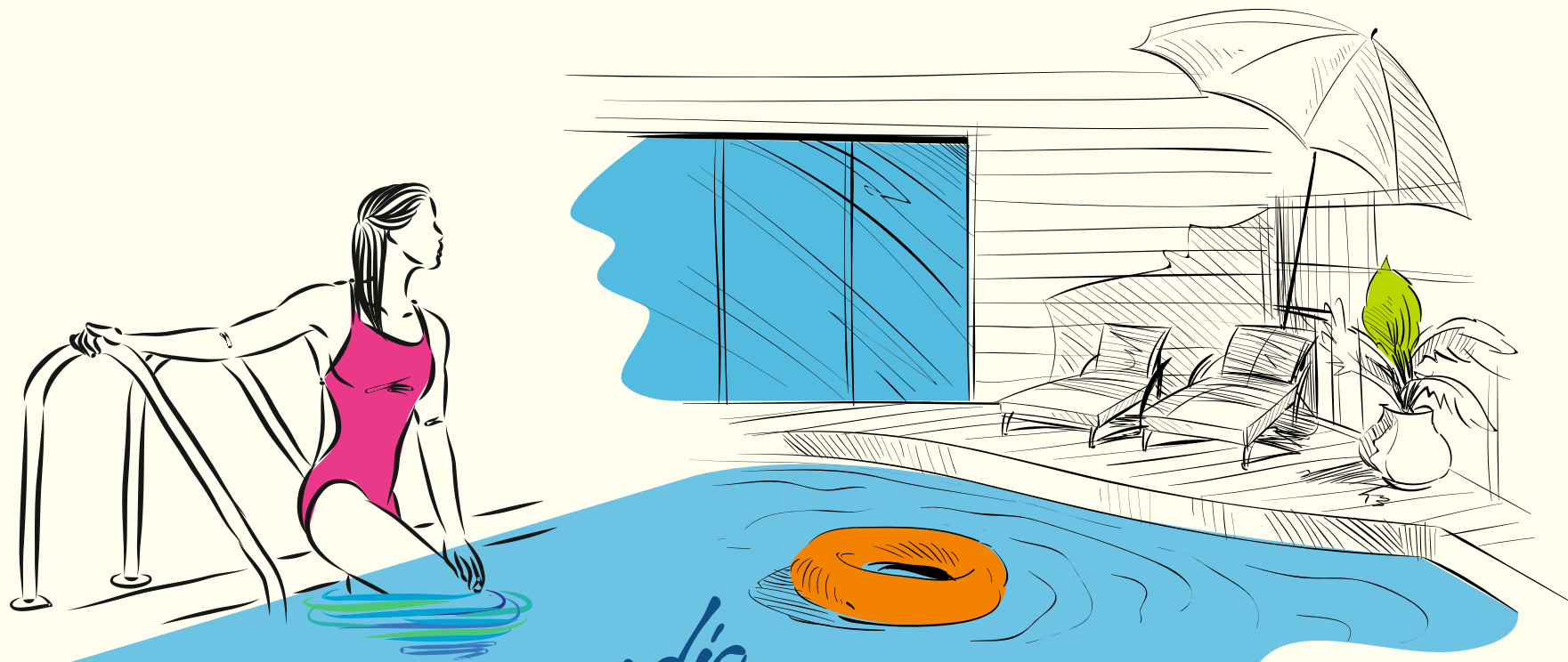
Power back-up for common areas & clubhouse

Sewage treatment plant



NCC  
Urban  
parkview





*Swimming, yoga, cardio,  
weights, and games...  
try them all*

For a person who values time over money, the clubhouse at NCC Urban Parkview comes as a boon. Relax with a few laps of swimming under star lit sky in terrace pool. Keep fit with a regimen at A/C gymnasium. Party hard on terrace lawns and receive guests in stately banquet hall.



**GYMNASIUM**



**GAMES ROOM:  
CHESS, CARROM,  
DARTS**



**PROJECT  
MAINTENANCE  
OFFICE**



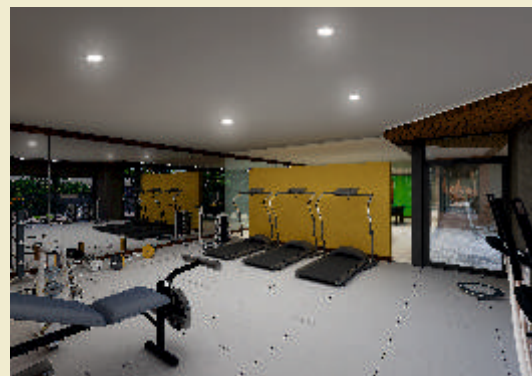
**MULTIPURPOSE  
HALL**



**BILLIARDS  
& SNOOKER  
ROOM**



**SWIMMING POOL**



# 3 BHK

WEST FACING

DESCRIPTION  
3 BEDROOM + 3 TOILET

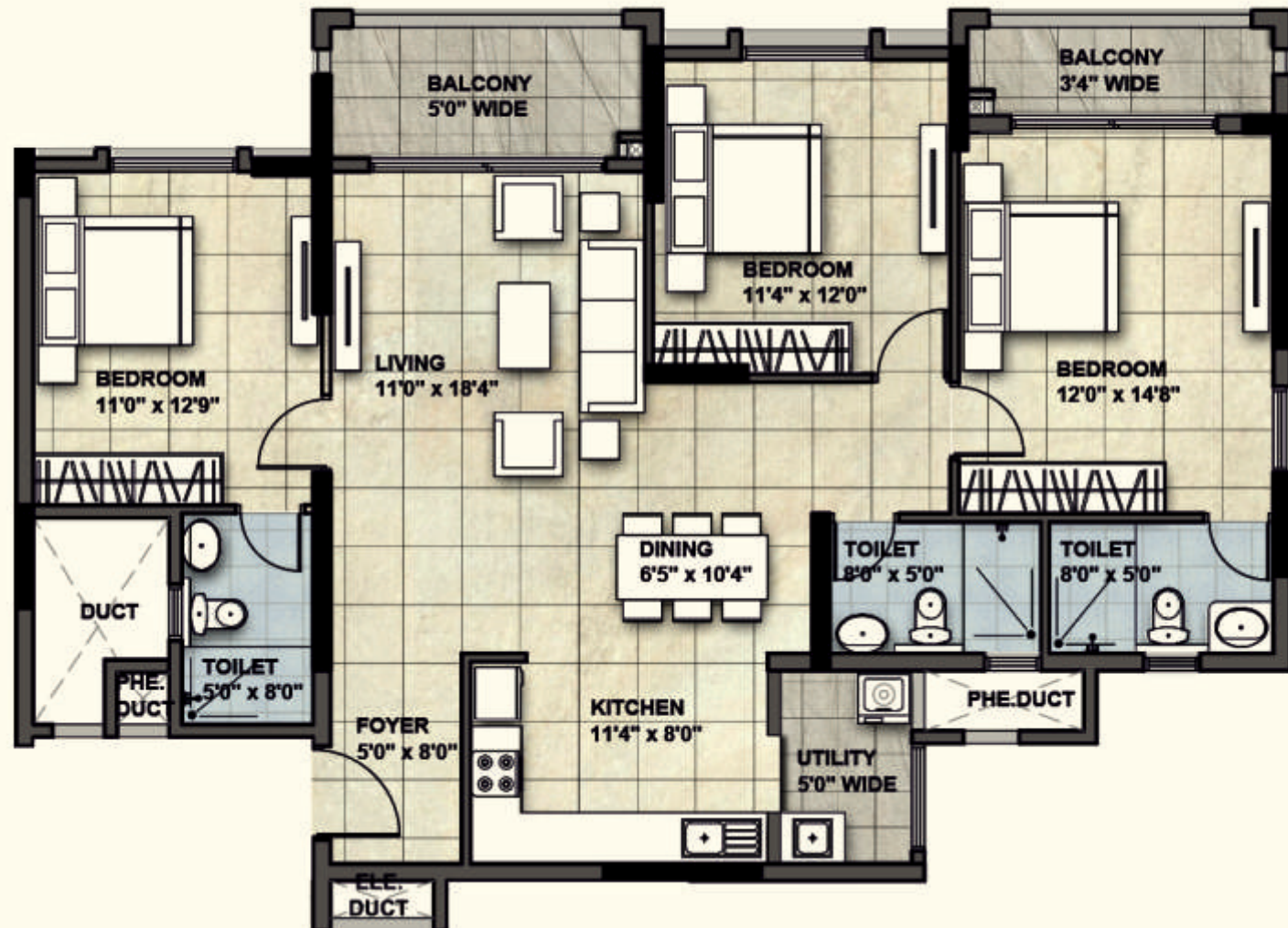
BUILT-UP AREA (SFT)  
1310

SUPER BUILT-UP AREA (SFT)  
1638

RERA CARPET AREA (SFT)  
1072

BALCONY / UTILITY AREA (SFT)  
160

NCC  
Urban  
parkview



# 3 BHK

## EAST FACING

DESCRIPTION  
3 BEDROOM + 3 TOILET

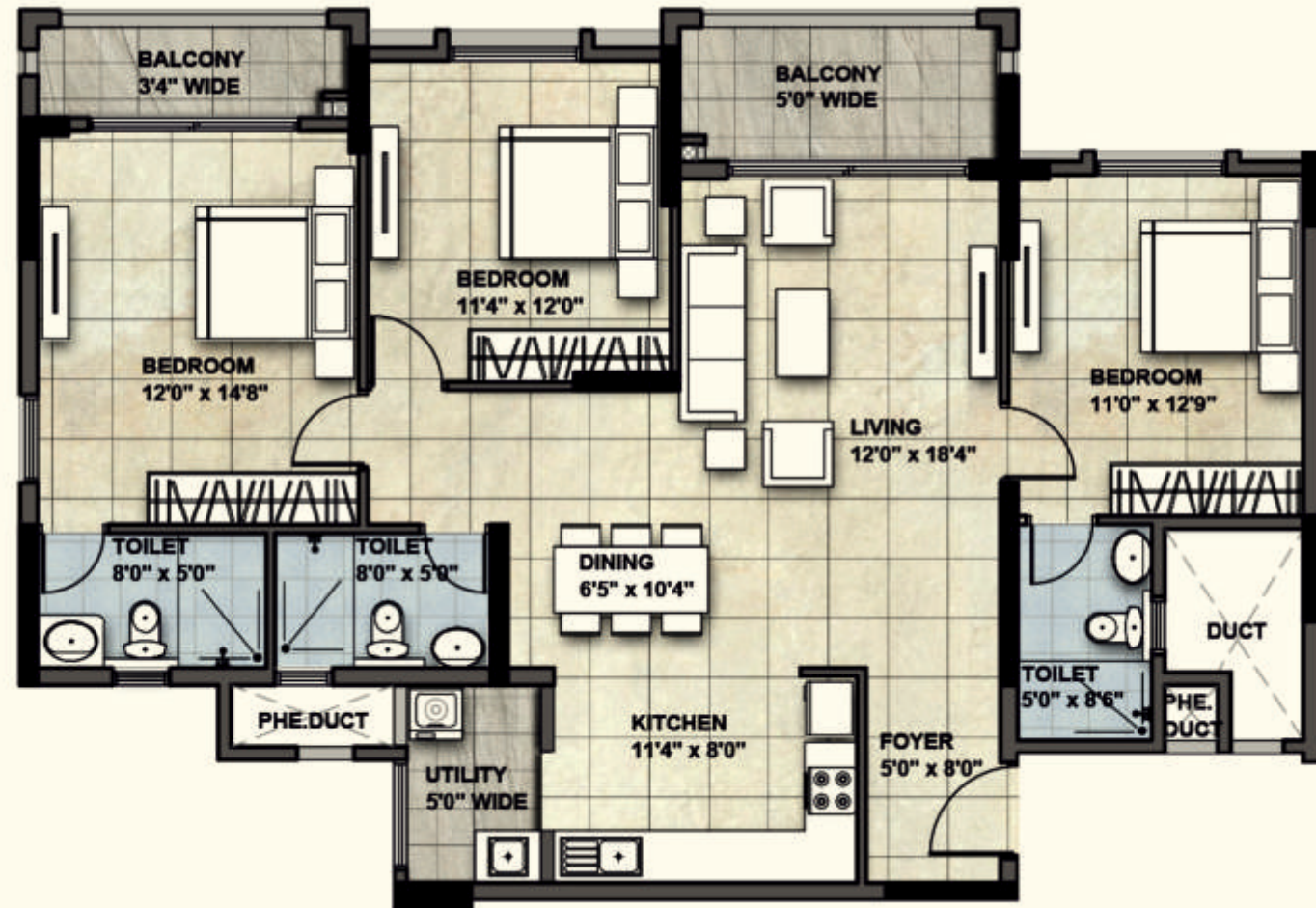
SUPER BUILT-UP AREA (SFT)  
1638

BUILT-UP AREA (SFT)  
1310

RERA CARPET AREA (SFT)  
1072

BALCONY / UTILITY AREA (SFT)  
160

**NCC**  
Urban  
parkview



# 3 BHK

## NORTH FACING

DESCRIPTION  
3 BEDROOM + 3 TOILET

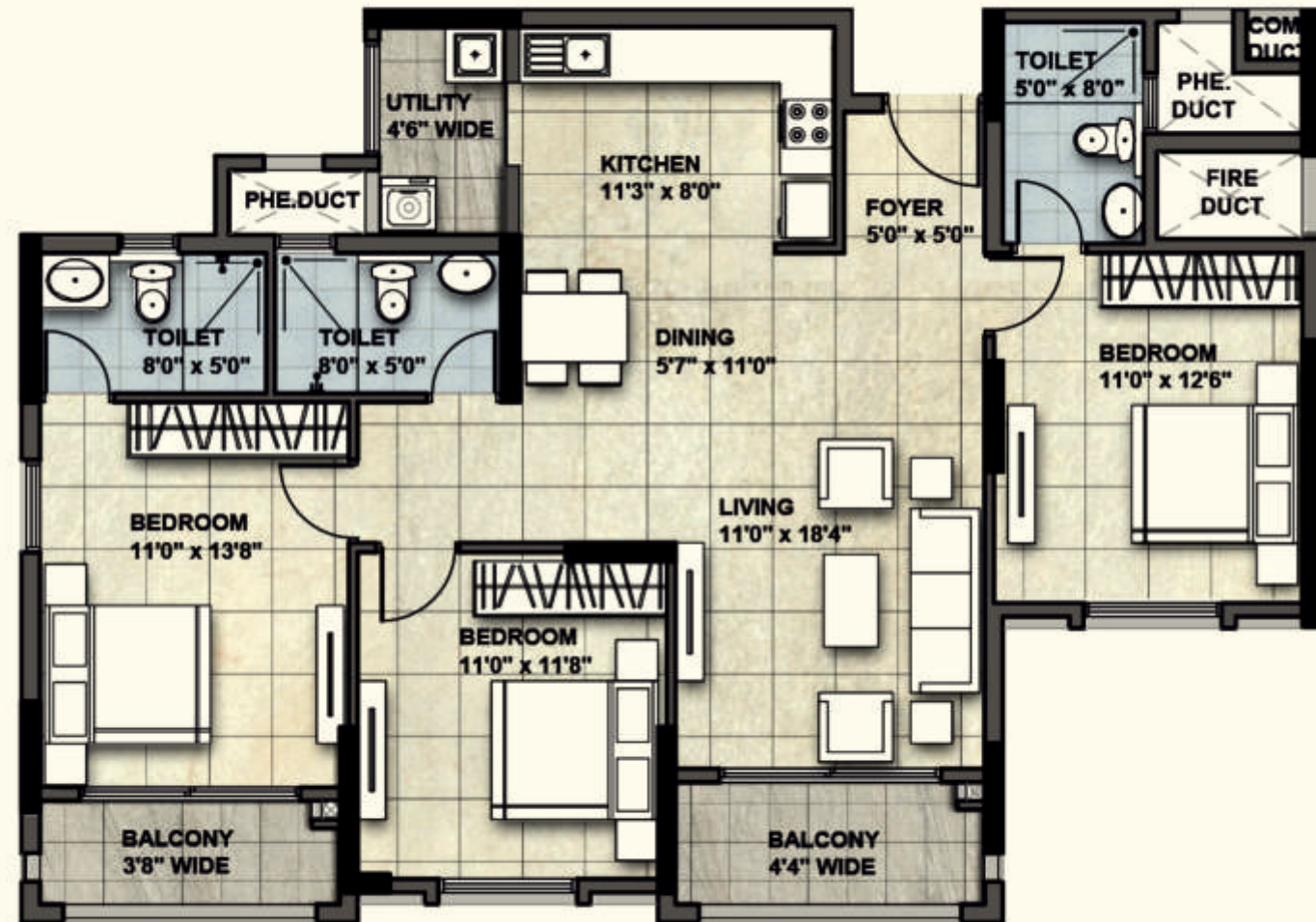
SUPER BUILT-UP AREA (SFT)  
1537

BUILT-UP AREA (SFT)  
1229

RERA CARPET AREA (SFT)  
985

BALCONY / UTILITY AREA (SFT)  
142

**NCC**  
Urban  
parkview





# 2 BHK

## WEST FACING

DESCRIPTION  
2 BEDROOM + 2 TOILET

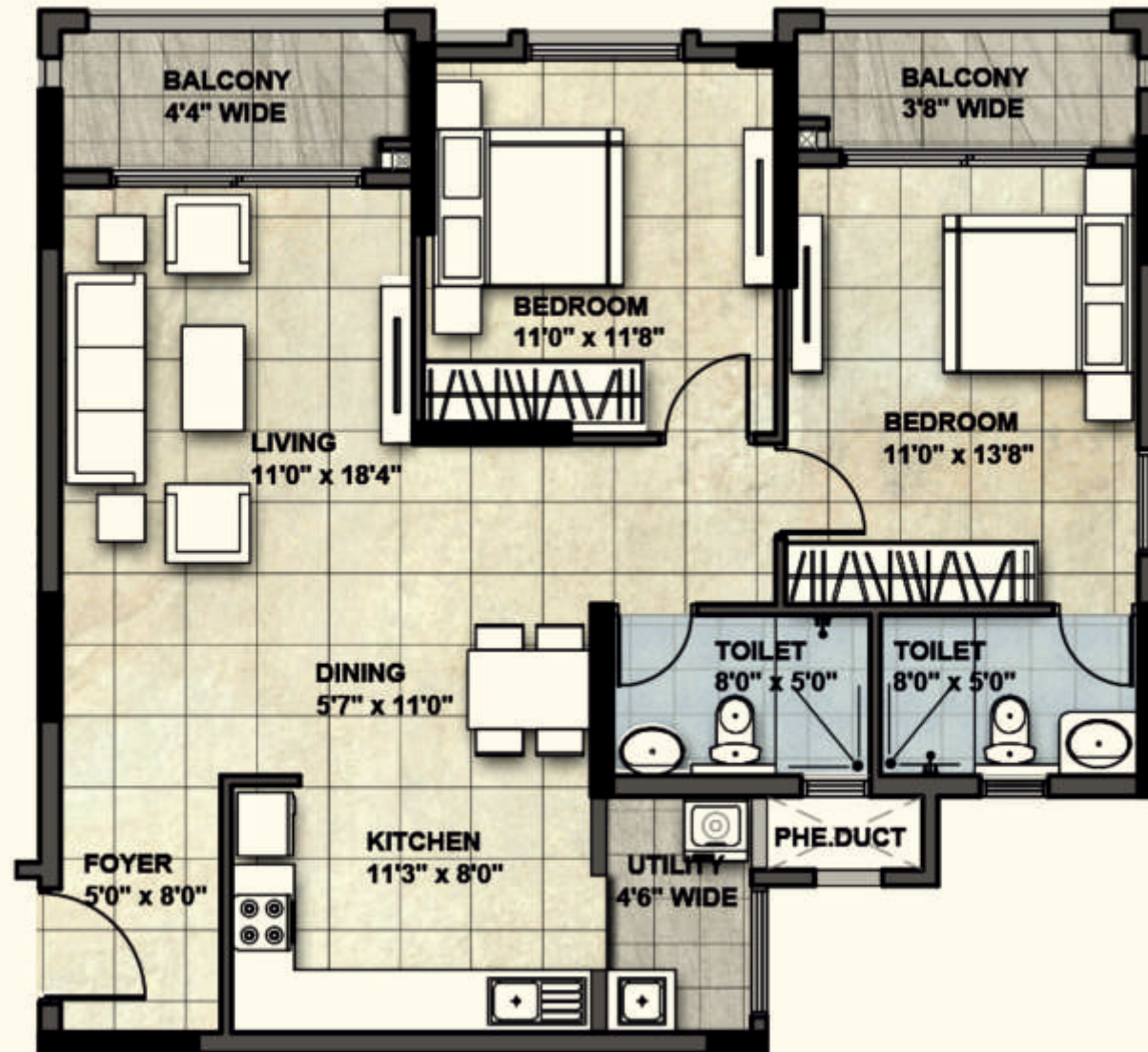
SUPER BUILT-UP AREA (SFT)  
1284

BUILT-UP AREA (SFT)  
1027

RERA CARPET AREA (SFT)  
820

BALCONY / UTILITY AREA (SFT)  
142

**NCC**  
Urban  
parkview



# 2 BHK

## NORTH FACING

DESCRIPTION  
2 BEDROOM + 2 TOILET

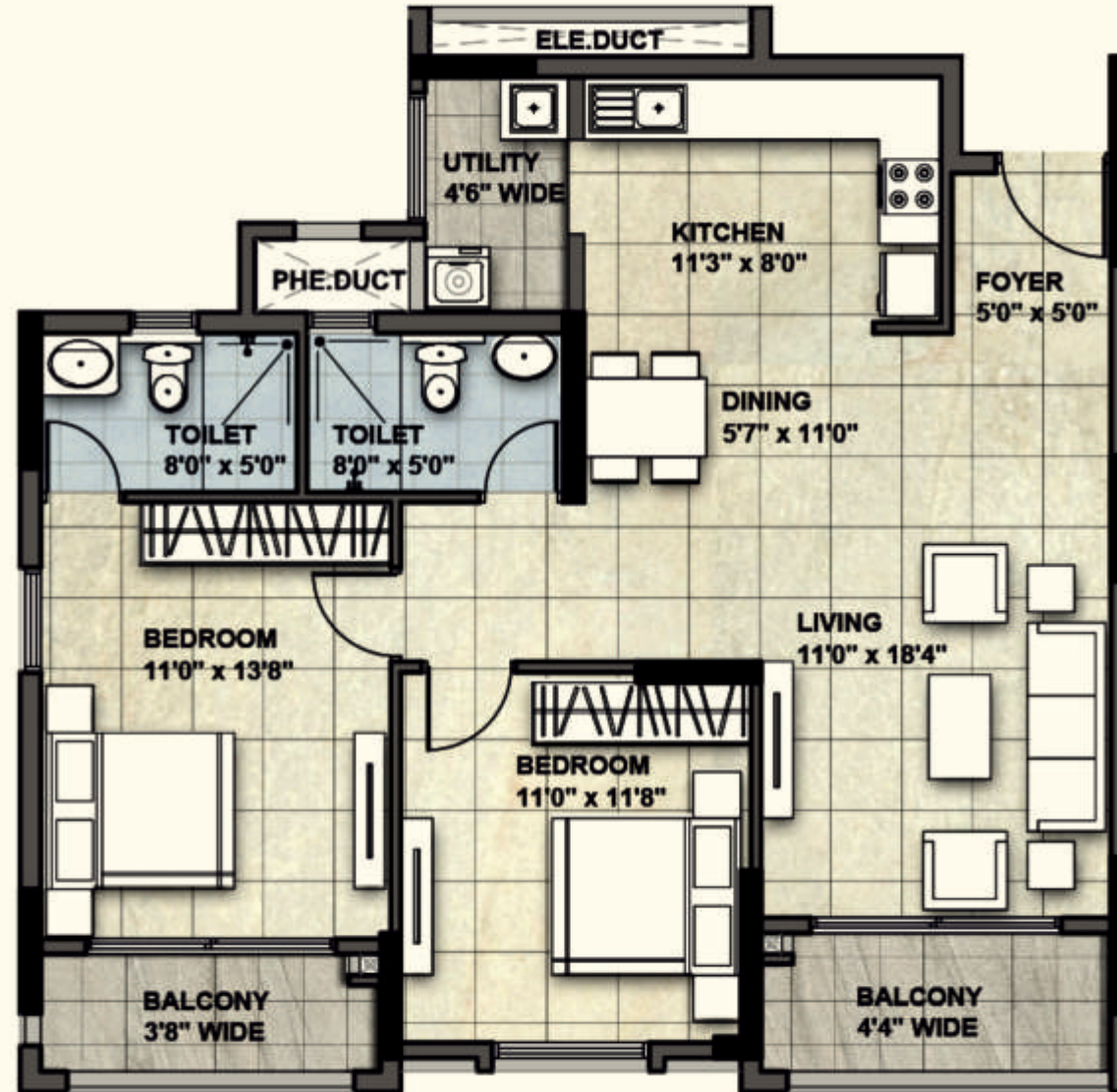
SUPER BUILT-UP AREA (SFT)  
1276

BUILT-UP AREA (SFT)  
1021

RERA CARPET AREA (SFT)  
801

BALCONY / UTILITY AREA (SFT)  
140

**NCC**  
Urban  
parkview



# 2 BHK

NORTH FACING

DESCRIPTION  
2 BEDROOM + 2 TOILET

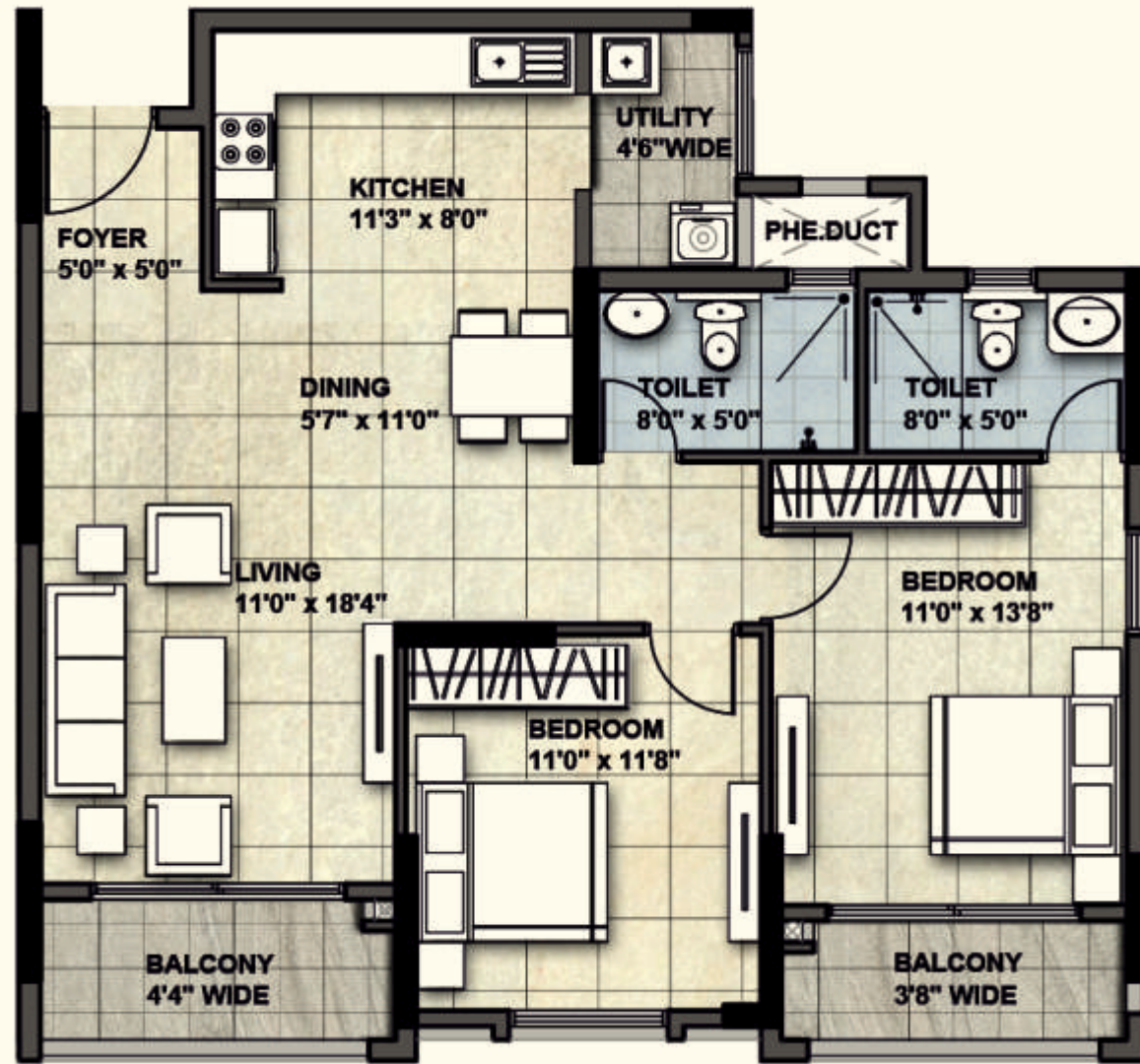
BUILT-UP AREA (SFT)  
1021

SUPER BUILT-UP AREA (SFT)  
1276

RERA CARPET AREA (SFT)  
801

BALCONY / UTILITY AREA (SFT)  
140

**NCC**  
Urban  
parkview



# 2 BHK

EAST FACING

DESCRIPTION  
2 BEDROOM + 2 TOILET

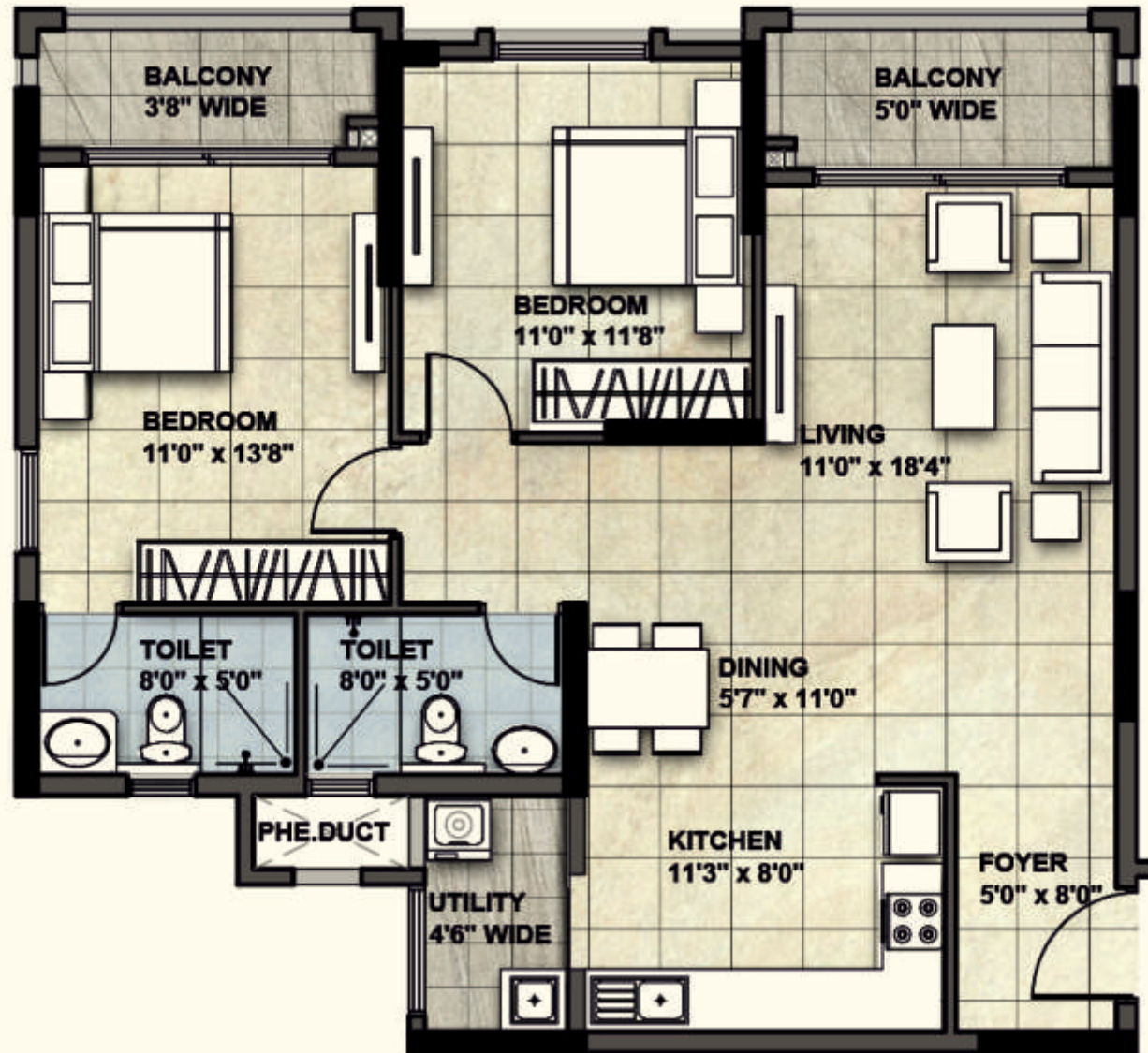
BUILT-UP AREA (SFT)  
1027

SUPER BUILT-UP AREA (SFT)  
1284

RERA CARPET AREA (SFT)  
820

BALCONY / UTILITY AREA (SFT)  
142

NCC  
Urban  
parkview





# SPECIFICATIONS



## Super Structure:

- R.C.C. Framed Structure of Basement + Ground +13 Floors to withstand wind & seismic (Zone II) loads.
- 8", 6" & 4" thick walls with Solid blocks.



## Doors and Windows:

- **Main Door:** Teak wood door frame with flush shutter, finished with Veneer on both sides.
- **Internal Doors:** Engineered wood frame with flush shutter, finished with veneer on both sides.
- **Toilet Doors:** Engineered Wood frame with flush shutter, finished with laminate on either sides.
- **Door Hardware:** Premium quality locks.
- **Windows:** UPVC sliding door/sliding window with clear float glass and mosquito mesh.
- **Toilet Ventilators:** Top hung UPVC ventilator with provision for exhaust fan.



## Ceiling and Wall Finishes:

- **External:** Two coats of exterior emulsion paint of premium quality over textured & plain areas of external surfaces.
- **Internal:** Smooth putty finish for walls and ceiling with two coats of premium emulsion paint of premium quality.
- **Toilets:** Calcium silicate board false ceiling.



## Flooring:

- Entrance lounge/lobbies with Granite flooring for Basement and Ground floor.
- Typical floors corridors with a combination of granite and vitrified flooring.
- **Foyer, Living, Dining & kitchen:** 800 X 800 mm

size double-charged vitrified tiles of premium quality.

- **Bedrooms:** 600 X 600mm size double charged vitrified tiles of premium quality.
- **All Balconies / Utilities:** Flooring with anti-skid ceramic tiles of premium quality.



## Tile Cladding/Dado:

- **Bathrooms:** Dado up to false ceiling height using ceramic tiles of premium quality.
- **Kitchen:** Ceramic tile dado up to 2' height of premium quality.
- **Utilities:** Ceramic tiles dado up to 3' height of premium quality.



## Kitchen:

- 20 mm thick granite with SS sink of premium quality (Single Bowl with Drain Board).



## CP & Sanitary Fixtures:

- **Master Bedroom Toilet:** Granite counter top wash basin with Single lever mixer.
- **Other Toilets:** Half pedestal wash basins in Kid's & Common Toilets of premium quality.
- **EWC:** Wall mounted EWC with concealed flush tank of premium quality in all toilets.
- Single-lever diverter with bath spout and over head shower in all toilets of premium quality.
- Provision for geyser in all bathrooms.
- Chrome-plated faucets of premium quality.



## Electrical:

- Concealed copper wiring of premium quality.
- Power outlets for geysers in all bathrooms.
- BESCO power supply of 4 KW for 2BHK and 5KW for 3BHK units, with an individual meter.
- Miniature Circuit Breakers (MCB) & DB's of premium quality.
- Modular switches of premium quality.



## Telecom:

- Provision for telephone points in living and master bed room.

## Television:

- Provision for television connection in Living and Master Bed room.



## Lifts:

- 2 No's automatic lifts of Schindler / OTIS / Johnson make with auto rescue device.
- Granite/marble cladding entrance.




## Security System:

- Peripheral area equipped with CCTV cameras for surveillance.
- Intercom facility from entrance security to each flat.



*Treat yourself  
to those gifts  
life sometimes offer*

Located on busy New Yelahanka, the 3-floor commercial spaces attract high networth individuals to its merchandise. The entrance gives a royal welcome to continuous footfalls. Glittering spaces, state-of-the-art management and spacious parking will ensure higher returns on your business investment. Relocate to this prestigious address that matches your brand and business and convert all the consumer attention into profits.

A modern multi-story building with a white grid facade and glass ground floor. The building features a prominent white grid structure that frames the windows and balconies. The ground floor is a glass-fronted commercial space. The building is set against a clear blue sky with some light clouds. In the foreground, there are some trees and a few people walking or cycling on a sidewalk.

3 Floors for Shopping | Flexible floor spaces | Glass facade | Stunning elevation  
Elevators | Wide corridors | Seating areas | Elegant landscaping  
Spacious parking | 100% Security & Power back-up | Property management system





**LOCATION MAP**  
(Not to scale)



*a compellingly  
well connected  
location*

Located in Yelahanka, on the well defined growth center with great connectivity, NCC Urban Parkview redefines the neighborhood with raised standards. With access to Hebbal and International Airport is an ideal place to live and flourish. Access to reputed schools like national Public School, Mallya Aditi International School and shopping at RMZ Mall and Yelahanka New Town make your life more comfortable.

Mallya Aditi International School - 2 Min

National Public School - 3 Min

Royal Orchid Resort - 5 Min

RMZ Galleria Mall - 6 Min

California Resorts - 8 Min

BMSIT College - 10 Min

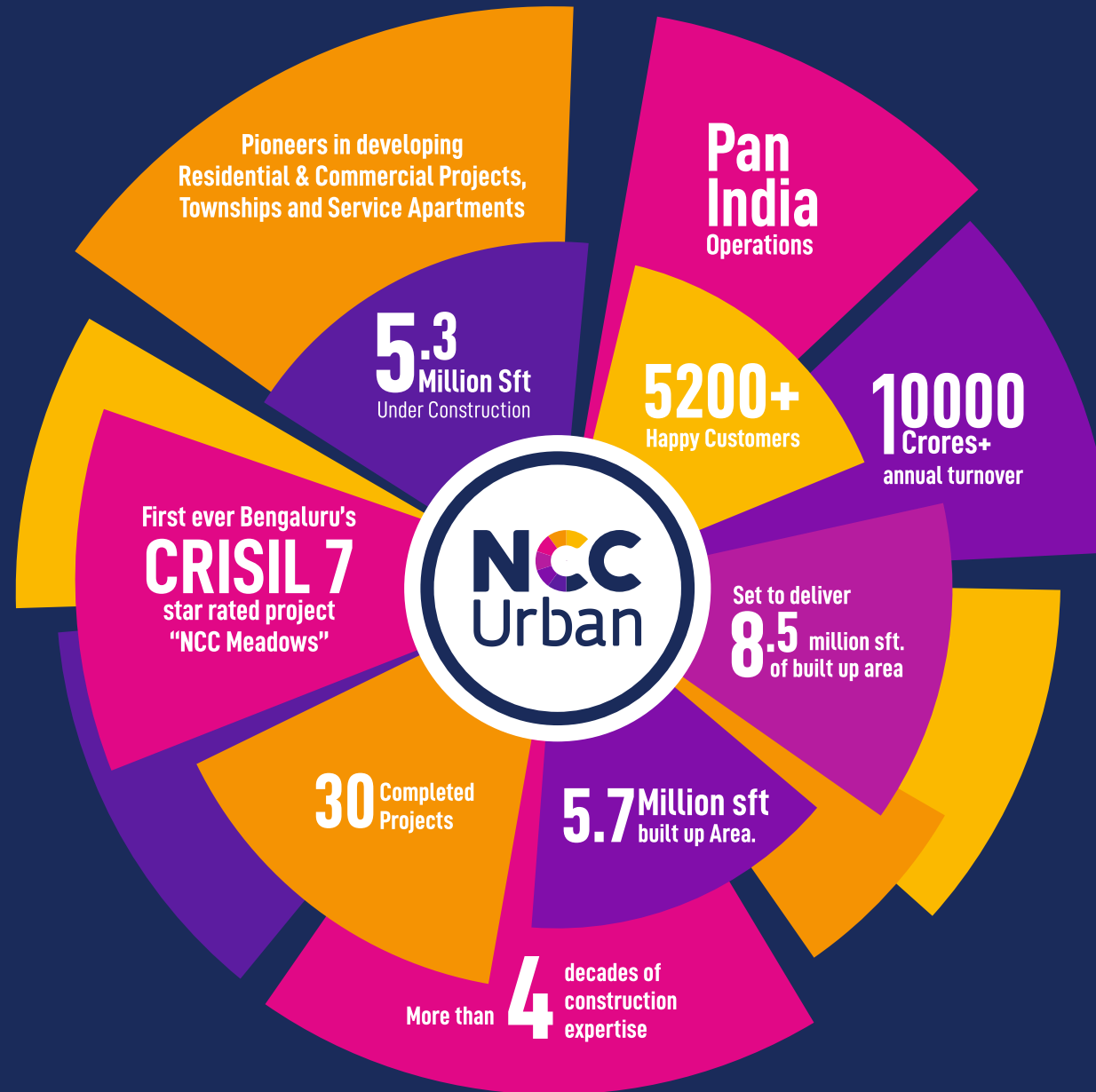
Hebbal Flyover - 11 Min

Chairman's Resorts - 11 Min

Esteem Mall - 15 Min

Manyata Tech Park - 27 Min

International Airport - 30 Min



**IT'S EASY  
TO BUILD  
TRUST,  
WHEN YOU HAVE  
MORE THAN  
4 DECADES  
OF EXPERTISE.**

NCC Urban Infrastructure Ltd. is a Subsidiary of NCC Limited and comes Equipped With a world class building techniques and state-of-the-art building infrastructure that is expertly commandeered by top-notch professionals.

NCC Urban Infrastructure's quality operations span across Residential and commercial complexes, townships, SEZs and serviced apartment complexes.

The company has an impressive pan India presence across Bengaluru, Hyderabad, Chennai, Kochi, Guntur and Ranchi

NCC Urban has inherited its experience and expertise from NCC Limited.

Known for its excellence in the execution of Turn key projects, Industrial Buildings,

Multistoried, Commercial Structures, Townships, Bridges, Roads, Metro Rail Projects, Railway Projects, Thermal Power Projects, Irrigations, Water and Environmental, Pipelines, Mining, Etc.

NCC Urban - a growing Infrastructure Company in India with annual turn over nearly Rs.10,000+ crores.

NCC Urban is developed the prestigious National Games Housing Complex Project in Ranchi, Jharkhand.

The Company has also acquired lands in and around Bengaluru, Chennai, Goa, Kakinada, Hyderabad and Kochi, for its real estate projects

NCC Urban is all set to deliver 12.8 million sft. of built up area spread over 286 acres in the next three years.



---

**Bengaluru • Hyderabad • Chennai • Kochi • Guntur • Ranchi**

---

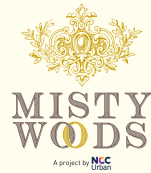
ONGOING & COMPLETED  
**PROJECTS IN  
 BENGALURU**



-  ONGOING PROJECTS
-  COMPLETED PROJECTS

# FEW OF OUR LANDMARK PROJECTS

## BENGALURU



### Off. Airport Road, yelahanka

Hi-end luxury 5 BHK independent villas  
spread across a lush 9.5 acres  
Starts from 3693 - 4683 Sq. Ft.



### IT Coridor - Sarjapur Road

Independent luxury 3 & 4 BHK villas  
spread across a lush 22 acres  
Starts from 2757 - 4961 Sq. Ft.



### Yelahanka - Bengaluru

359 premium 2, 2.5 & 3 BHK  
Apartments in 4 acres  
Sizes vary from 1182 to 2088 Sft

# FEW OF OUR LANDMARK PROJECTS

## HYDERABAD



### Hi Tech City - Hyderabad

184 Premium Apartment in 4 acres  
4 BHK Simlex & 5 BHK Duplex  
Starts from 3347 - 4152 Sq. Ft.



### Narsingi - Hyderabad

Premium 3 & 4 BHK apartments  
spread across a lush 22 acres  
Starts from 1535 - 3380 Sq. Ft.

## KOCHI



### @ Elamakkara. Kaloor

2 & 3 BHK Luxury Apartments  
Sizes From 1133 To 1662 Sq. Ft.

## CHENNAI



### Sholinganallur

Luxury 2, 2.5 & 3 BHK  
Apartments



**TRUSTED BRAND WITH  
4 DECADES OF LEGACY**

RERA REGISTRATION NO: PRM/KA/RERA/1251/309/PR/110722/005050

\*Disclaimer-The contents of this Brochure are purely conceptual and have no legal binding on the Developer.  
The Developer reserves the right to amend the layout, plans, number of floors, elevation, specifications and amenities etc.

**LOANS AVAILABLE FROM  
ALL LEADING BANKS**

Member  
**CREDAI**  
BENGALURU