



Rera Registration No.
P52100034241
maharerait.mahaonline.gov.in



ALLURE-II

1 & 2 BHK SMART HOMES
RAVET

Celebrating a Life of Freshness...



A Project By
ASSOCIATES[®]
PROMOTERS & BUILDERS

... happy homes ...

ISO 9001-2015 Certified Company

Welcome to a world that has every element to make your every day perfect!



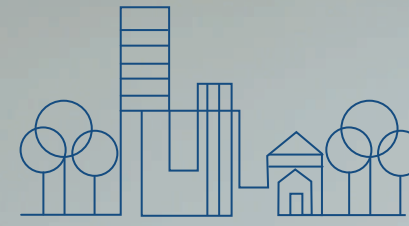
Artist's Impression



Exceptionally Special Life Created for a Select Few!

Live every day with the energizing play of nature in a home created to mingle convenience, comfort & luxury. Lead a peaceful life with exclusive amenities & maverick architecture, that comes together at 'Allure-II' by G.K. Associates. With thoughtfulness ingrained within, right from location, to planning the minutest of details, 'Allure-II' brings to you a premium residence series of 1 & 2 BHK Smart Homes at Ravet.





Allure a Lifetime of Joy & Harmony

Life at Allure-II encourages you to attract all that you desire. An essence reflected by our name to create an attraction for life itself. The 1 & 2 BHK Residences at Ravet allure you to lead an exceptional life of joy & ease. The modern-day architecture ushers a lifetime of happiness with the flow of nature unbound. Intricate details perfected with care to encourage a secure social life with health-lifestyle opportunities & the support of a nurturing community. Find accessibility to healthcare, business, education, essential & leisure avenues at bay. Allure-II invites you to experience the extraordinary moments that make life reviving each day.



UNCOMPROMISED.
UNHINDERED LIVING

PROJECT LAYOUT

TAILORED TO COMPLEMENT
YOUR LIFESTYLE



EXPERIENCE SHEER
CONVENIENCE



AMENITIES



Jogging Track



Children's Play Area



Convenient Sit Outs



Grand Entrance Gate



Gymnasium



Landscape Garden



Rain Harvesting System



Backup for Common Areas



SPECIFICATIONS

Structure

- RCC frame structure of superior quality designed for earthquake safety

Masonry

- External walls light weight block
- Internal walls light weight block

Plaster

- Neru / Gypsum finish plaster for internal walls
- Sand faced cement plaster for external walls

Doors

- Decorative main entrance door with standard make fittings

Painting

- Internal oil bond distemper paint in the entire flat
- External Acrylic weatherproof paint for the entire building

Kitchen

- Marble / Granite kitchen platform parallel / L shape
- Stainless steel sink
- Glazed tiles dado above platform up to lintel level
- Dry area attached to the kitchen with provision for washing machine with water inlet & drain
- Provision for water purifier

Flooring

- 800 x 800 Vitrified tile flooring of standard make
- 600 x 600 Tiles in the master bedroom

Bathrooms

- Anti-skid ceramic flooring
- Designer glazed dado tiles up to lintel level
- Hindware / Jaquar or equivalent make sanitary ware
- Hot & cold mixer for all shower areas
- Provision for exhaust fan
- Provision for geyser
- Waterproof doors
- Solar heater connection for mixer unit in master toilet (for fixed timing)

Electrification

- Adequate concealed electrical points with standard wiring, telephone point and cable
- T.V. point in living and master bedroom
- A.C. point in the master bedroom
- Each flat with ELCB (Earth-leakage circuit breaker) for electrical safety
- Inverter backup for each flat
- Modular switches

Windows

- Large windows for better air circulation, ventilation & view
- Powder coated 2 track or 3 track Aluminum sliding windows with Tinted glass
- M.S. grills for safety and security
- Marble/Granite window sill top

Plumbing

- Concealed plumbing inside flat
- Jaquar / Hindware / equivalent fitting in bathroom, toilet and kitchen

- **Letterbox for each flat**

- **Video door phone for each flat**



Artist's Impression

1 BHK
A-112, 212, 312, 412, 512,
612, 812, 912, 1012, 1112.

2 BHK C
A-111, 211, 311,
411, 511, 611, 811,
911, 1011, 1111.

2 BHK C
A-101, 201, 301,
401, 501, 601, 801,
901, 1001, 1101.

2 BHK A
A-110, 210, 310,
410, 510, 610, 810,
910, 1010, 1110.

2 BHK D
A-102, 202, 302,
402, 502, 602, 802,
902, 1002, 1102.

2 BHK A
A-109, 209, 309,
409, 509, 609, 809,
909, 1009, 1109.

2 BHK A
A-103, 203, 303,
403, 503, 603, 803,
903, 1003, 1103.

2 BHK A
A-109, 208, 308,
408, 508, 608, 808,
908, 1008, 1108.

2 BHK E
A-107, 207, 307, 407, 507,
607, 807, 907, 1007, 1107.

2 BHK A
A-104, 204, 304,
404, 504, 604, 804,
904, 1004, 1104.

2 BHK B
A-106, 206, 306,
406, 506, 606, 806,
906, 1006, 1106.

2 BHK B
A-105, 205,
305, 405,
505, 605,
805, 905,
1005, 1105.

ALLURE-II

1st, 2nd, 3rd, 4th, 5th, 6th, 8th,
9th, 10th & 11th FLOOR PLAN



ASSOCIATES
PROMOTERS & BUILDERS

... happy homes ...

ISO 9001:2015 Certified Company



Rera Registration No.
P52100034241
maharera.it.mahaonline.gov.in





13TH FLOOR PLAN



GK ASSOCIATES
PROMOTERS & BUILDERS
... happy homes ...
ISO 9001:2015 Certified Company

Rera Registration No. **P52100034241**
mahareraonline.gov.in



Location Map
NOT IN SCALE

Nearby Locations

- | | | | |
|-------------------------------|---------|-------------------------|--------|
| • Mumbai Express High Way | 1 km. | • E-Square Hinjewadi | 8 km. |
| • Symbiosis (Gahunje) | 1.5 km. | • Aditya Birla Hospital | 9 km. |
| • MCA Cricket Ground | 2 km. | • Hinjewadi IT Park | 9 km. |
| • Indira International School | 4 km. | • Aundh | 13 km. |
| • D.Y. Patil College | 6 km. | • Pune University | 16 km. |
| • Akurdi Railway Station | 7 km. | • Talawade IT Park | 20 km. |

A Project By **GK ASSOCIATES**
PROMOTERS & BUILDERS
... happy homes ...
ISO 9001:2015 Certified Company

Rera Registration No. **P52100034241**
mahareraonline.gov.in



Site Address : S. No. 63/2 Ravet Pune. Maharashtra 412101

CONTACT : 9766195128 | 9011001557 | 9822006061 | www.gkdevelopers.com

Disclaimer - The furniture, painting, items, electronic goods, additional fittings/fixtures, decorative items, false ceiling including finishing materials specifications, shades, sizes and color of the tiles etc. shown in the images are only indicative in nature and are only for the purpose of illustrating /indicating a possible layout and do not form part of the standard specifications/amenities/services to be provided in the flat.