
AVENUE

— PARK - I —

For a precious life!



AVENUE

— PARK - I —

For a precious life!

Plush Apartments at 2 minutes driving distance off
Western Express Highway-Malad East,
A sprawling 22 storey tower that lends you the
opportunity of reaching home early to your family
who will always welcome you with smile.

The beautiful elevation of this majestic tower makes it stand out amongst the other towers and is set to become a landmark in the vicinity. A feeling that will fill your heart with the pride of having made the right investment.

While we invite you to visit us at our site office we'd like to take you through the little nuances that make staying in this residence a joyful experience.

The Tastefully decorated entrance facia elevates your pride from the moment you approach the entrance gate.

The security cabins ensure every guest is registered and monitored for the safety of the residents. The commercial shops the paver block laid foot path adds to the clean and luxurious look of the tower.



PODIUM GARDEN :

Podium garden at level 4 offers recreation to your kids and family during evenings.

JOGGING TRACK :

A jogging track around the podium garden helps you follow your routine jog every morning surrounded by lush green lawns and fresh morning breeze.



SPICY KITCHENS :

Kitchens with Granite platforms give the kitchen a neat and clean look.

A service area / wash area gives extended space to design your kitchen storage.



COZY BEDROOMS :

The spacious bedrooms are bound to give you a very positive and relaxed feel, even after accommodating a wardrobe and a dressing table, making it a space that relaxes you and helps you free yourself from the day's stress.

BATHROOMS :

The Bathrooms have a very spacious look complete with tiles that add beauty and quality sanitaryware fittings which help you start your day on a fresh note.

SPACIOUS LIVING ROOM :

The eloquent 1 and 2 BHK layout plans utilize maximum space for maximum utility and lends space for innovative interior design. The Living room opens into sky through wide French window's, which bring in fresh air and sunlight. Quality vitrified tiles add to the spacious look. The dining space helps the family stay together for life.



GROUND FLR PLAN

AVENUE
 — PARK - I —
 For a precious life!

Wing-A

Wing-B



TYPICAL FLOOR PLAN

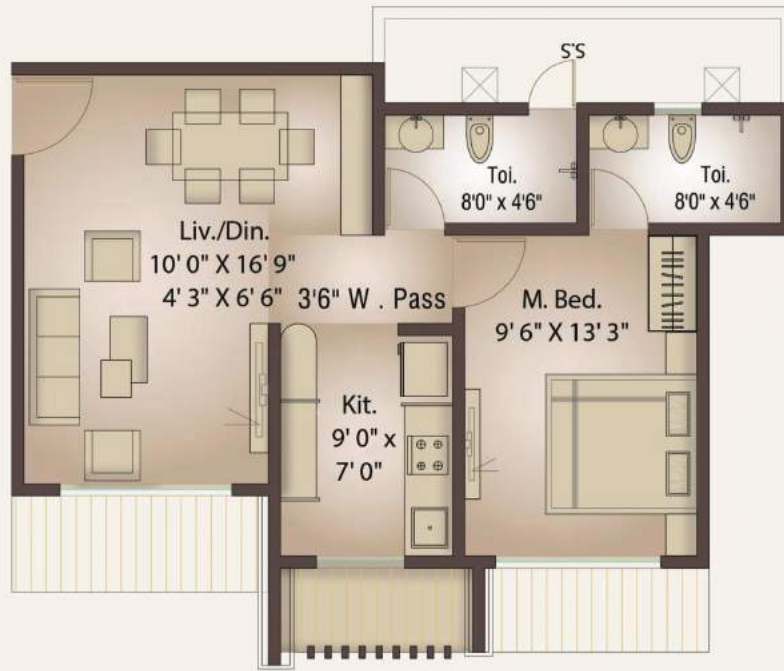
30' 0" W internal access road



60' W . Road

AVENUE
— PARK-I —

For a precious life!



1
BHK



2
BHK





AMPLE PARKING SPACE :

A beautiful driveway leading to the ample parking space at level 1, 2 and 3, ensures that your cherished car stays secured within the boundaries of the complex.

GYMNASIUM :

A gymnasium helps you and your family, stay fit throughout their life.

LOBBY :

A spaciouly designed entrance lobby that matches your rich taste.

ELEVATORS :

Quality elevators from a company of repute, Auto Battery backup for elevators in case of emergency help in smooth functioning of elevators even during power failures. A special Stretcher Lift / Elevator for the comfort of the ailing family members.

SECURITY :

Each Apartment comes with a video door phone and a centralised intercom facility so that your family feels safe 24X7 and is able to identify visitors before letting them into the house.

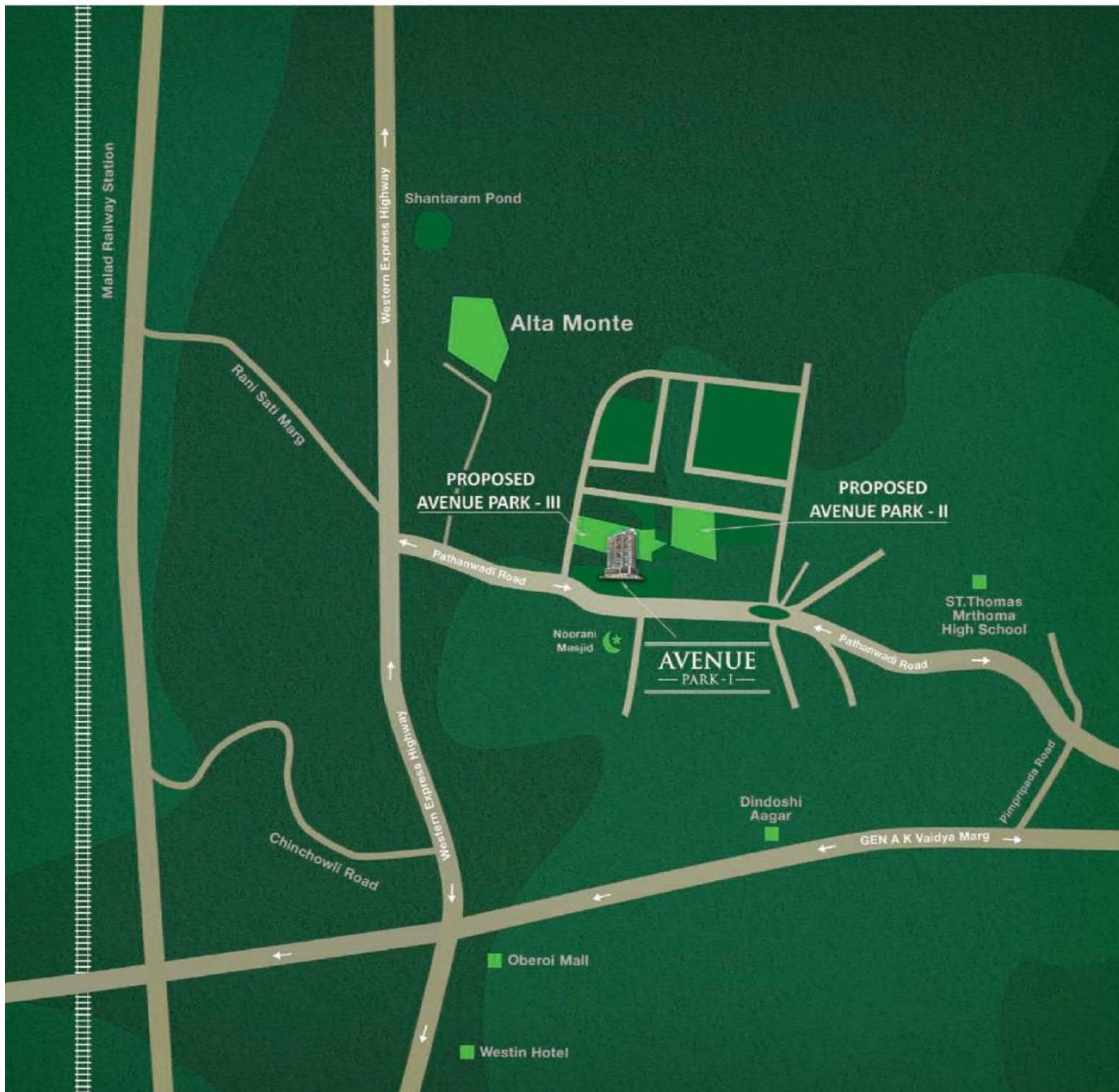
ELECTRICAL FITTINGS :

Safety of your family is of prime importance to us hence the apartments come with Quality electrical fittings and wires.



AVENUE
— PARK-I —

For a precious life!





AVENUE — PARK - I —

For a precious life!

<i>Architect</i> T.N.HASSAN	<i>Structural Engineer</i> FRAME DESIGN
<i>Project Consultant</i> DIMENSIONS	<i>Legal Advisor</i> SANJEEV SINGH

Project Management Consultant
HANWARE CONSULTANTS

Also Upcoming Projects By

M/S MONOLYTH INFRA

AVENUE
PARK II

AVENUE
PARK III

Construction Partner



BUILDTECH LIFE SPACES

ISO CERTIFIED 9001-2015

Registered Office : Buildtech Group of Companies

404/A, Samartha Aishwarya, Opp. Tarapore Tower, Lokhandwala,
Andheri (West), Mumbai - 400 053.

Tel.: 022 2632 7866

Mob.: 9619288277, 9619303587, 8898715977, 9702534638

Developer



M/S C.B. ENTERPRISES

Site Office : Shop No. 1 & 2 Maredia Manzil,
Near Gamco Marbel, Opp Noorani Masjid, Pathanwadi, Malad (E)
Mumbai- 400 097

Telephone No. 022-28496480/28496483

Email Address: buildtechgrp@gmail.com

Email Address: info@buildtechgroup.co.in

www.buildtechgroup.co.in