



# EUREKA PARK

SECTOR 150 NOIDA

#Home**Smart**Home

## FLOOR PLANS



## CONTEMPORARY LIFESTYLE BACKED BY DECADES OF TRUST

Welcome to Eureka Park, where a delightful experience unfurls with every step. Where modern day aspirations meet a luxurious indulgence, backed by the unshakeable trust of Tata. An epitome of modernity, an abode of lavishness and a home to smartness, Eureka Park is so much more than just a home.

### GOLD RATED BY IGBC

Eureka Park is pre-certified as Gold Rated by IGBC (Indian Green Building Council) for giving equal prominence to eco-sustainability, water and energy conservation through eco-sensible lifestyle features integrated within the project.

### CODED GREEN BY UP-RERA

Eureka Park has been coded green (safe and credible) by UP-RERA. The Uttar Pradesh Real Estate Regulatory Authority colour codes different real estate projects to mark developer's reliability; wherein a green coding means safe for investing.

**Source:** <https://realty.economictimes.indiatimes.com/news/industry/up-rera-colour-codes-to-mark-developer-reliability/78639534>







TOTAL LAND AREA: 20.74 ACRES



## TYPICAL FLOOR PLAN



TOWER-A1 & A3		
Unit type	Unit Carpet Area	Balcony Area
UNIT-01	60.164	12.580
UNIT-02	59.555	12.581
UNIT-03	60.164	12.580
UNIT-04	60.164	12.580
UNIT-05	60.164	12.580



MASTER PLAN

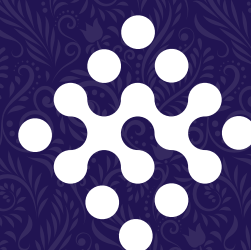


### DISCLAIMERS:

All Dimensions are in millimeters (and in bracket feet inches)  
All areas are in square meters

Measurements are approximate and subject to minor variations.  
Furnitures, fixtures and specifications provided in the plan are not part of the offered apartment for sale.

## PHASE I TOWERS A01 & A03



# EUREKA PARK

SECTOR 150 NOIDA

## TYPICAL FLOOR PLAN



TOWER-A2 & A4		
Unit type	Unit Carpet Area	Balcony Area
UNIT-01	60.164	12.580
UNIT-02	59.555	12.581
UNIT-03	60.164	12.580
UNIT-04	60.164	12.580
UNIT-05	60.164	12.580



MASTER PLAN



### DISCLAIMERS:

All Dimensions are in millimeters (and in bracket feet inches)  
All areas are in square meters

Measurements are approximate and subject to minor variations.  
Furnitures, fixtures and specifications provided in the plan are not  
part of the offered apartment for sale.

## PHASE I TOWERS A02 & A04



# EUREKA PARK

SECTOR 150 NOIDA



## TYPICAL FLOOR PLAN



MASTER PLAN



### DISCLAIMERS:

All Dimensions are in millimeters (and in bracket feet inches)  
All areas are in square meters

Measurements are approximate and subject to minor variations.  
Furnitures, fixtures and specifications provided in the plan are not  
part of the offered apartment for sale.

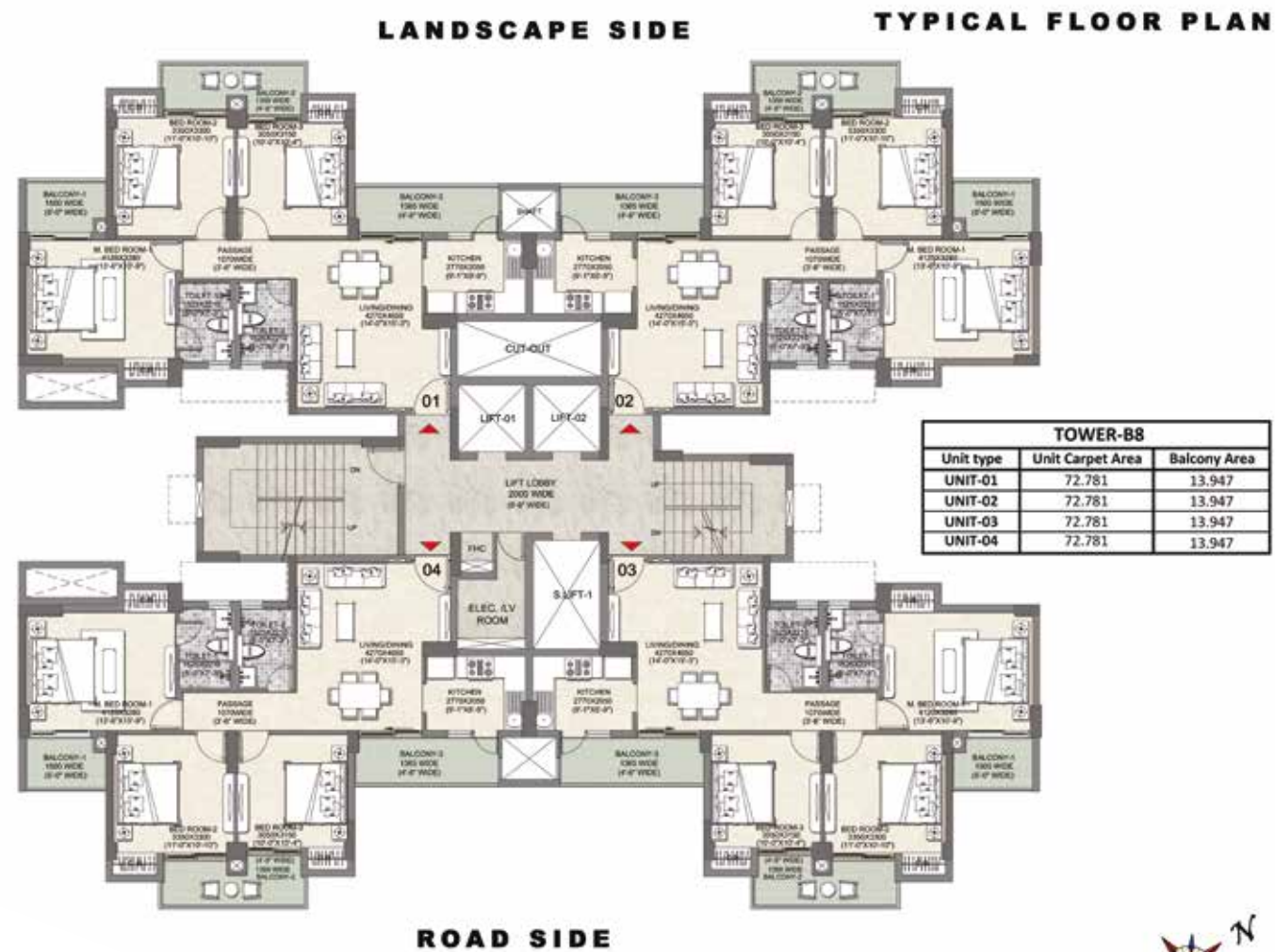
## PHASE II TOWERS C15, C16, C17 & C18



# EUREKA PARK

SECTOR 150 NOIDA

# PHASE II TOWER B11



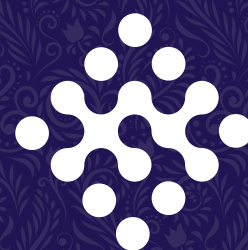
**DISCLAIMERS:**

All Dimensions are in millimeters (and in bracket feet inches)  
All areas are in square meters

Measurements are approximate and subject to minor variations.  
Furnitures, fixtures and specifications provided in the plan are not  
part of the offered apartment for sale.



MASTER PLAN



**EUREKA  
PARK**  
SECTOR 150 NOIDA



LANDSCAPE SIDE

TYPICAL FLOOR PLA



ROAD SIDE



MASTER PLAN

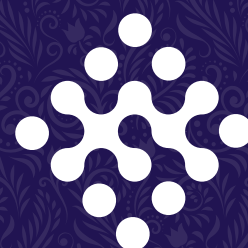


#### DISCLAIMERS:

All Dimensions are in millimeters (and in bracket feet inches)  
All areas are in square meters

Measurements are approximate and subject to minor variations.  
Furnitures, fixtures and specifications provided in the plan are not  
part of the offered apartment for sale.

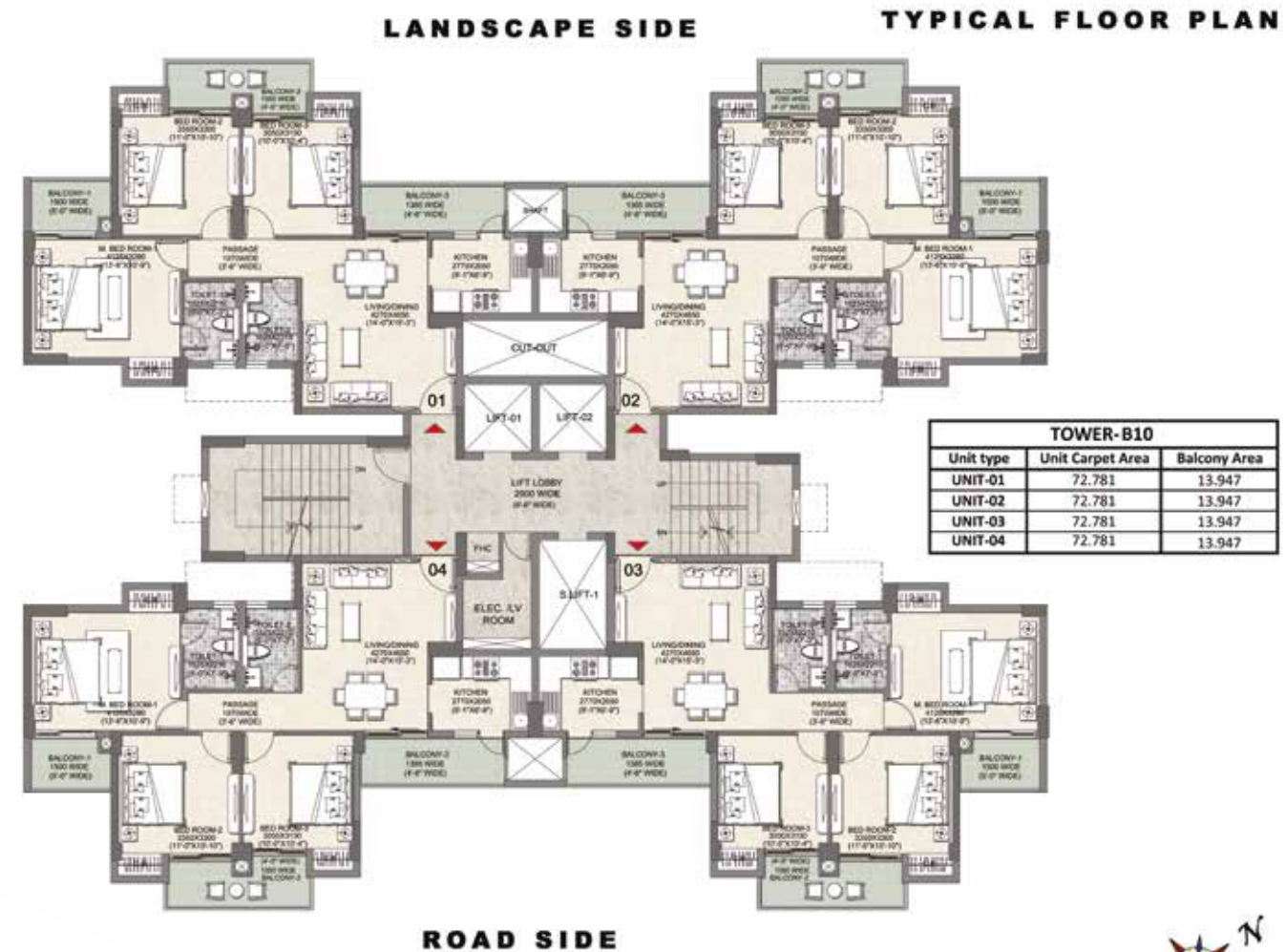
## PHASE II TOWER B12



**EUREKA  
PARK**  
SECTOR 150 NOIDA



## PHASE II TOWER B14



### DISCLAIMERS:

All Dimensions are in millimeters (and in bracket feet inches)  
All areas are in square meters

Measurements are approximate and subject to minor variations.  
Furnitures, fixtures and specifications provided in the plan are not  
part of the offered apartment for sale.



MASTER PLAN



# EUREKA PARK

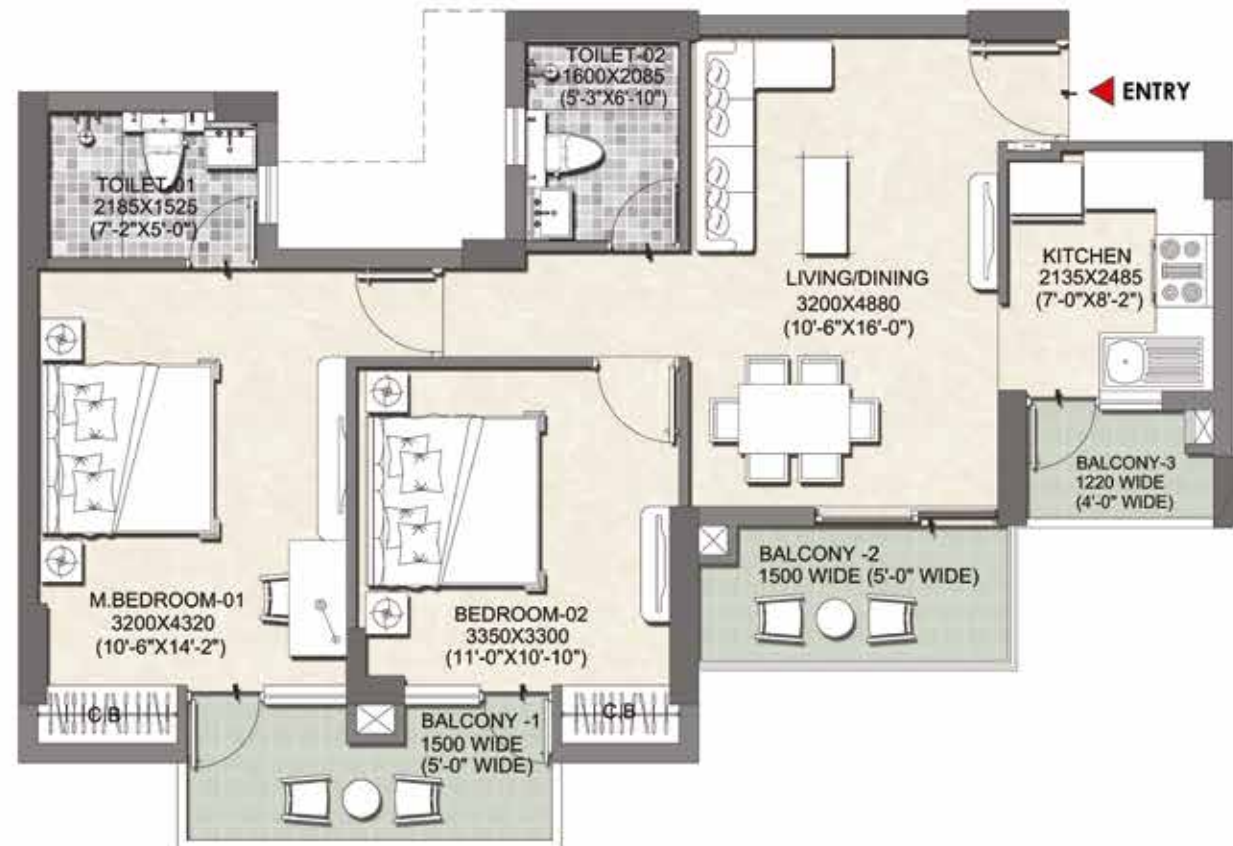
SECTOR 150 NOIDA



**TYPICAL UNIT**

TOWER-01 TO 04

**2 BHK,  
2 TOILET**



**TYPE-A UNIT-01,03,04,05**

**UNIT ORIENTATION AS PER TYPICAL FLOOR PLAN**

**DISCLAIMERS:**

All Dimensions are in millimeters (and in bracket feet inches)

**TYPICAL FLOOR PLAN**



**PHASE I**

**INTELLO  
1100**

**CARPET AREA**

647.61 SQ FT (60.164 SQ MT)

**EXCLUSIVE BALCONY AREA**

135.41 SQ FT (12.580 SQ MT)



**EUREKA  
PARK**  
SECTOR 150 NOIDA



# PHASE I

## INTELLO

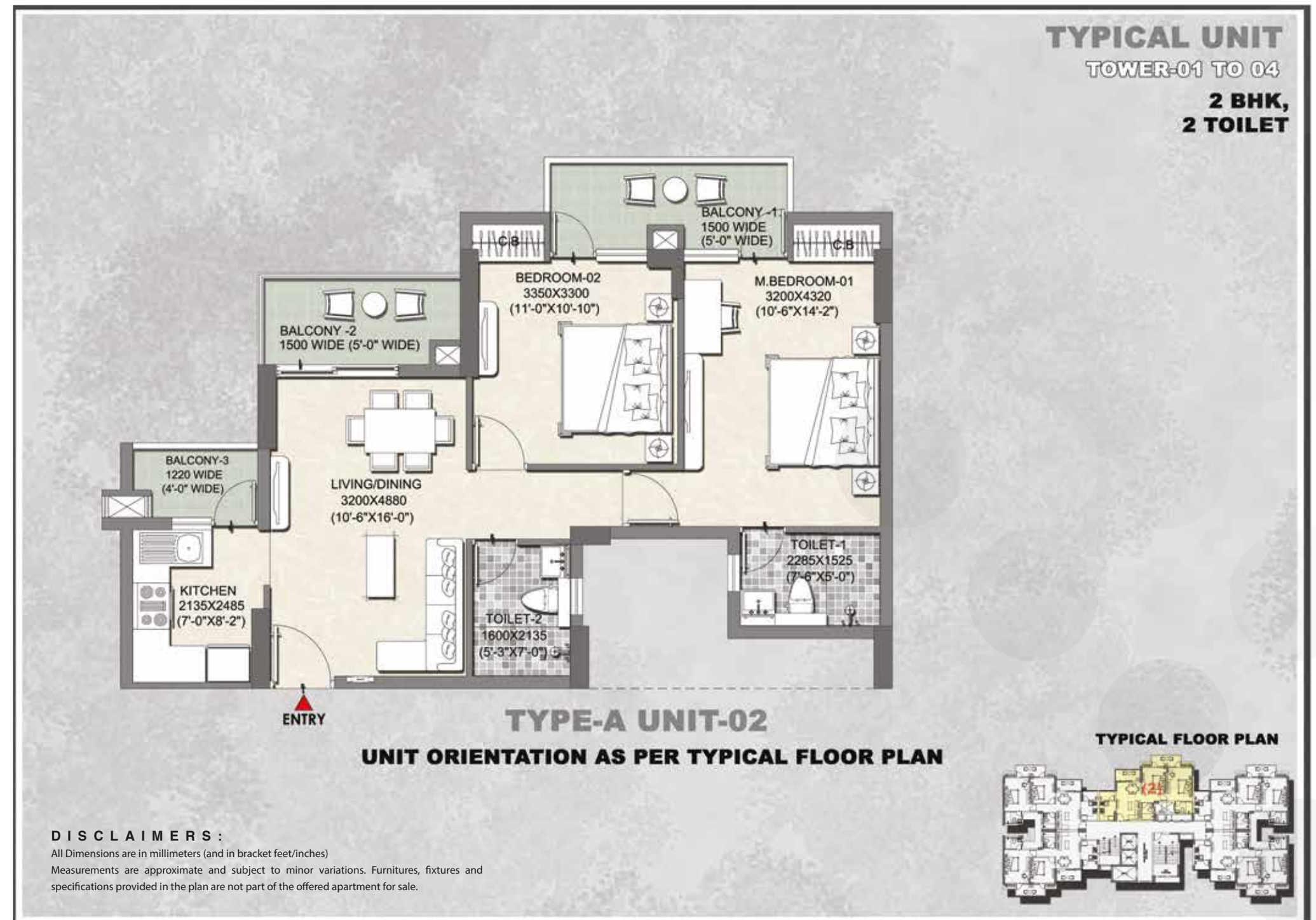
### 1100

#### CARPET AREA

647.61 SQ FT (60.164 SQ MT)

#### EXCLUSIVE BALCONY AREA

135.41 SQ FT (12.580 SQ MT)

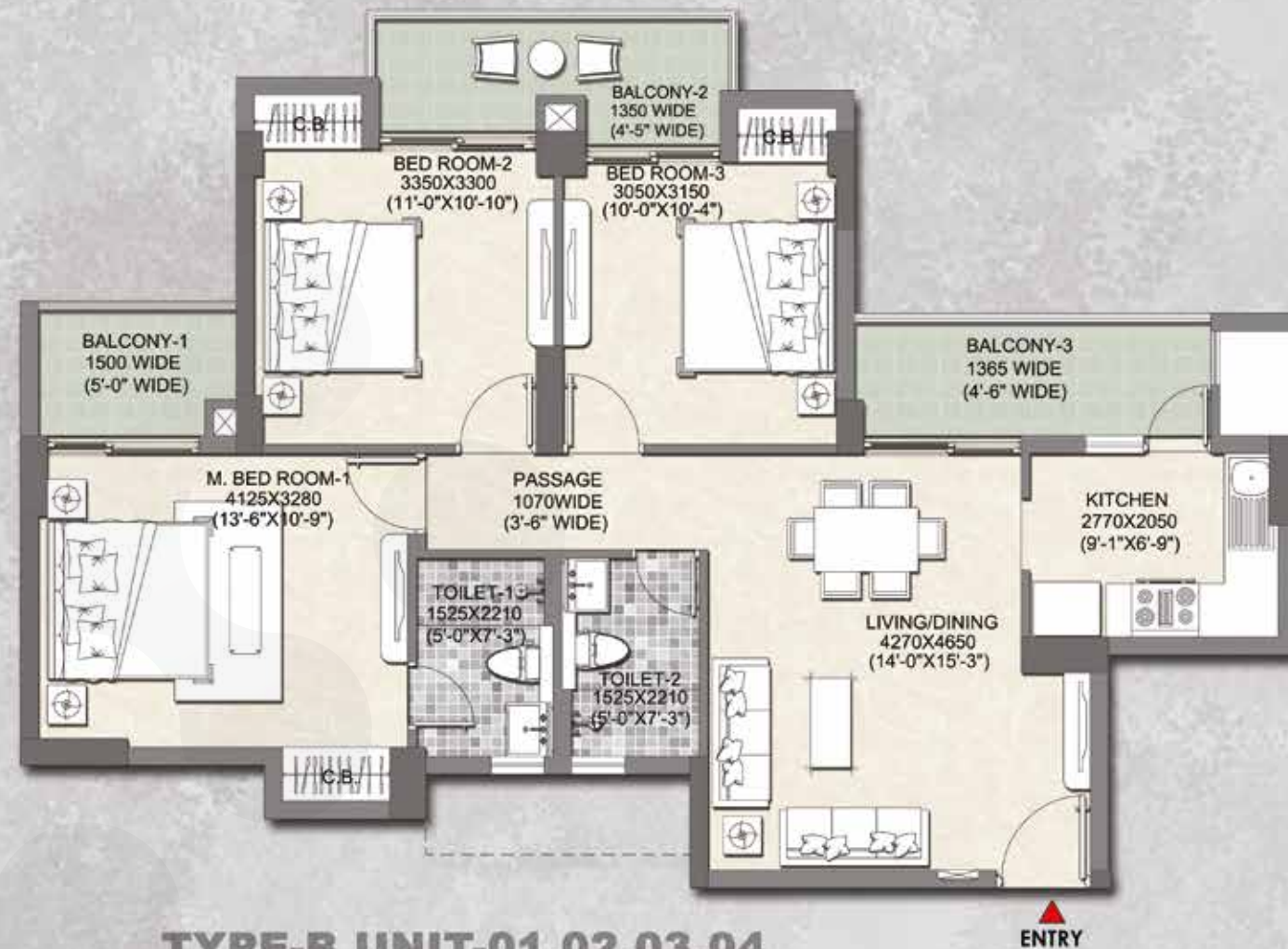


**EUREKA**  
**PARK**  
SECTOR 150 NOIDA



**TYPICAL UNIT**  
TOWER-08 TO 10

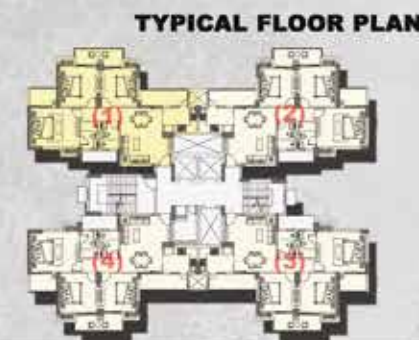
**3 BHK,  
2 TOILET**



**TYPE-B UNIT-01,02,03,04**  
**UNIT ORIENTATION AS PER TYPICAL FLOOR PLAN**

**DISCLAIMERS :**

All Dimensions are in millimeters (and in bracket feet/inches)  
Measurements are approximate and subject to minor variations. Furnitures, fixtures and specifications provided in the plan are not part of the offered apartment for sale.



## PHASE II

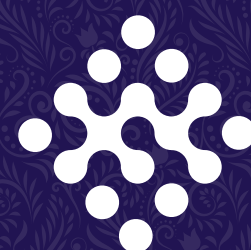
# BRIGHTUS 1285

**CARPET AREA**

783.41 SQ FT (72.781 SQ MT)

**EXCLUSIVE BALCONY AREA**

150.13 SQ FT (13.947 SQ MT)



**EUREKA  
PARK**  
SECTOR 150 NOIDA



# PHASE II

## PRIMUS

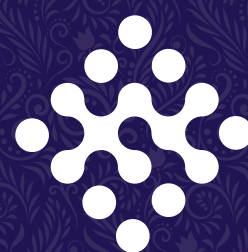
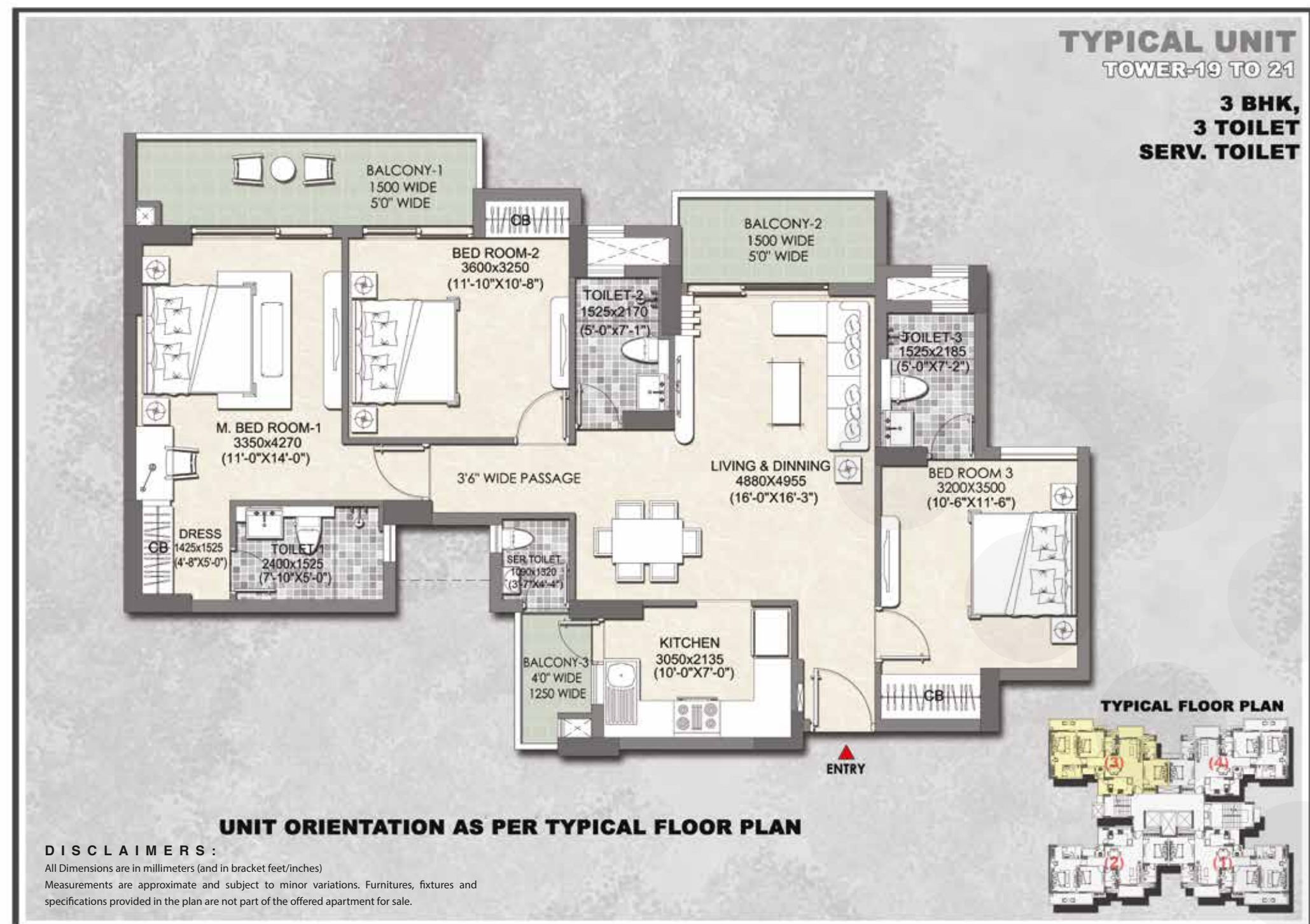
### 1575

#### CARPET AREA

981.34 SQ FT (91.169 SQ MT)

#### EXCLUSIVE BALCONY AREA

169.38 SQ FT (15.736 SQ MT)



**EUREKA**  
**PARK**  
SECTOR 150 NOIDA



**Call us: 1800 258 6424**

**Sales Gallery: Eureka Park, SC 02/A-1, Sector 150, Noida, Gautam Buddha Nagar, 201310.**

UPRERA Regn. No. EUREKA PARK PHASE I - UPRERAPRJ5448 & PHASE II - UPRERAPRJ469983 available on [www.up-rera.in](http://www.up-rera.in)

Disclaimer : The project is developed and promoted in phases by Land Kart Builders Pvt. Ltd. ("Developer") - subsidiary of Tata Value Homes Limited. Sub Lease of the unit is subject to terms of the Application Form and Agreement to Sub lease.

Please refer to the latest brochure prior to investing in the property. The approvals can be checked at site office and in the office of the Developer. Developer reserves the right to make changes as per prevailing Government norms. Project is financed by Aditya Birla Finance Limited. For conversion 1 Sq Ft = 0.0929 sq m. 'TATA' and 'TATA VALUE HOMES' are the registered trademarks of Tata Sons Private Limited. For more information, please contact our site office at Sector 150, Noida, 201310. Visit: <https://www.tatarealty.in/project/eureka-park/>



**SCAN THE QR CODE FOR  
A VIRTUAL TOUR  
OF THE SHOW APARTMENT**