



S A Y B A
G R O U P

SAYBA
RESIDENCY



Welcome to Sayba Residency

A world of luxurious 1, 2 & 3 BHK residences,

Sayba Residency offers a lifestyle that's class apart.

Laden with best-in-class amenities and superior it's your ideal dwelling abode.



Teardrop Swing

Sitting Area

Sitting Area

Terrace Garden Plan



Jogging Track

Children Play Area



AMENITIES:

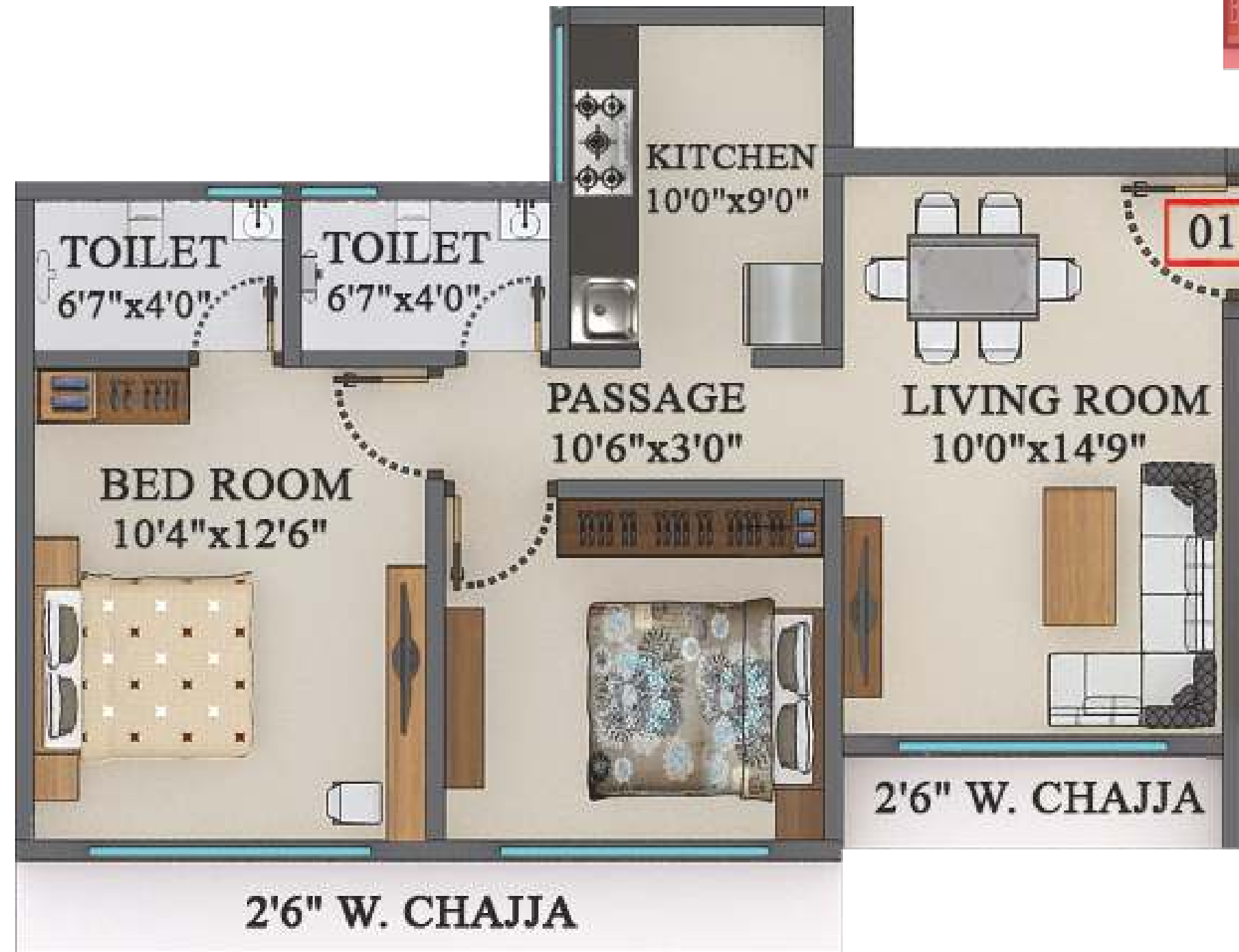
- Anodized aluminum sliding windows
- Granite kitchen platform with S.S. sink
- Glazed tiles dado up to the ceiling
- Designer vitrified flooring
- Designer tiles in toilets up to full height

- Concealed plumbing with exclusive fittings & fixtures
- Concealed copper wiring with adequate electrical points

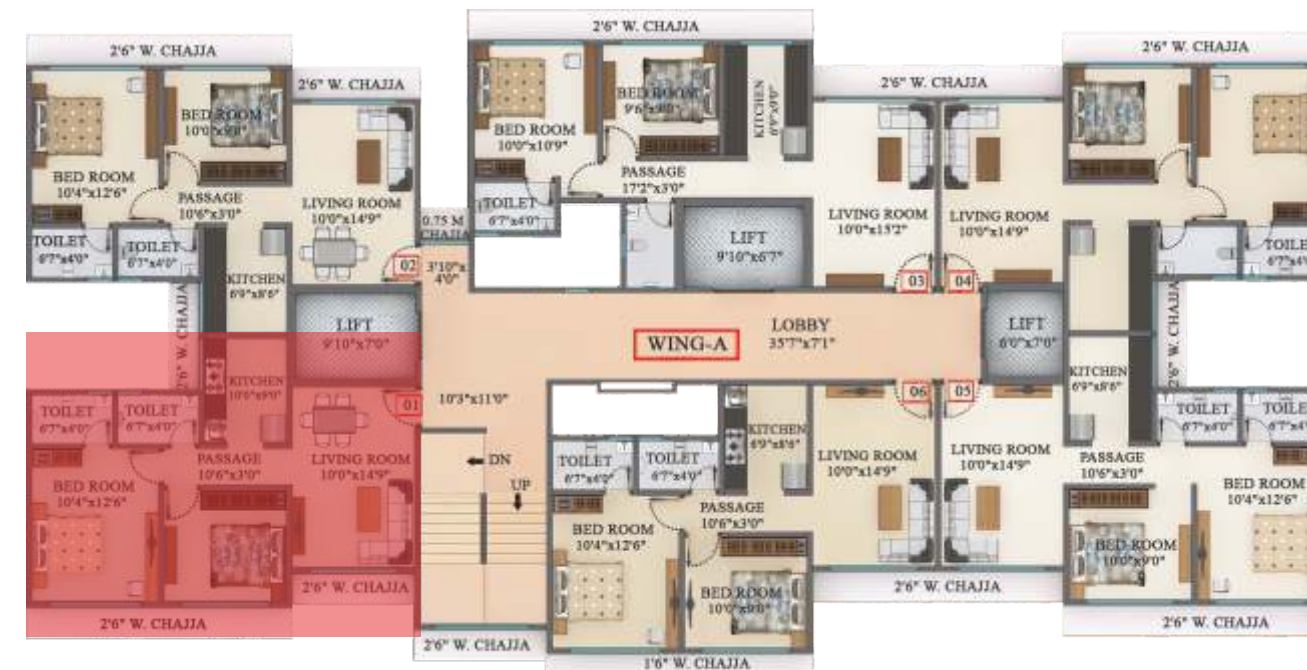
TERRACE AMENITIES:

- Well equipped kids play area
- Jogging track
- Sitting area

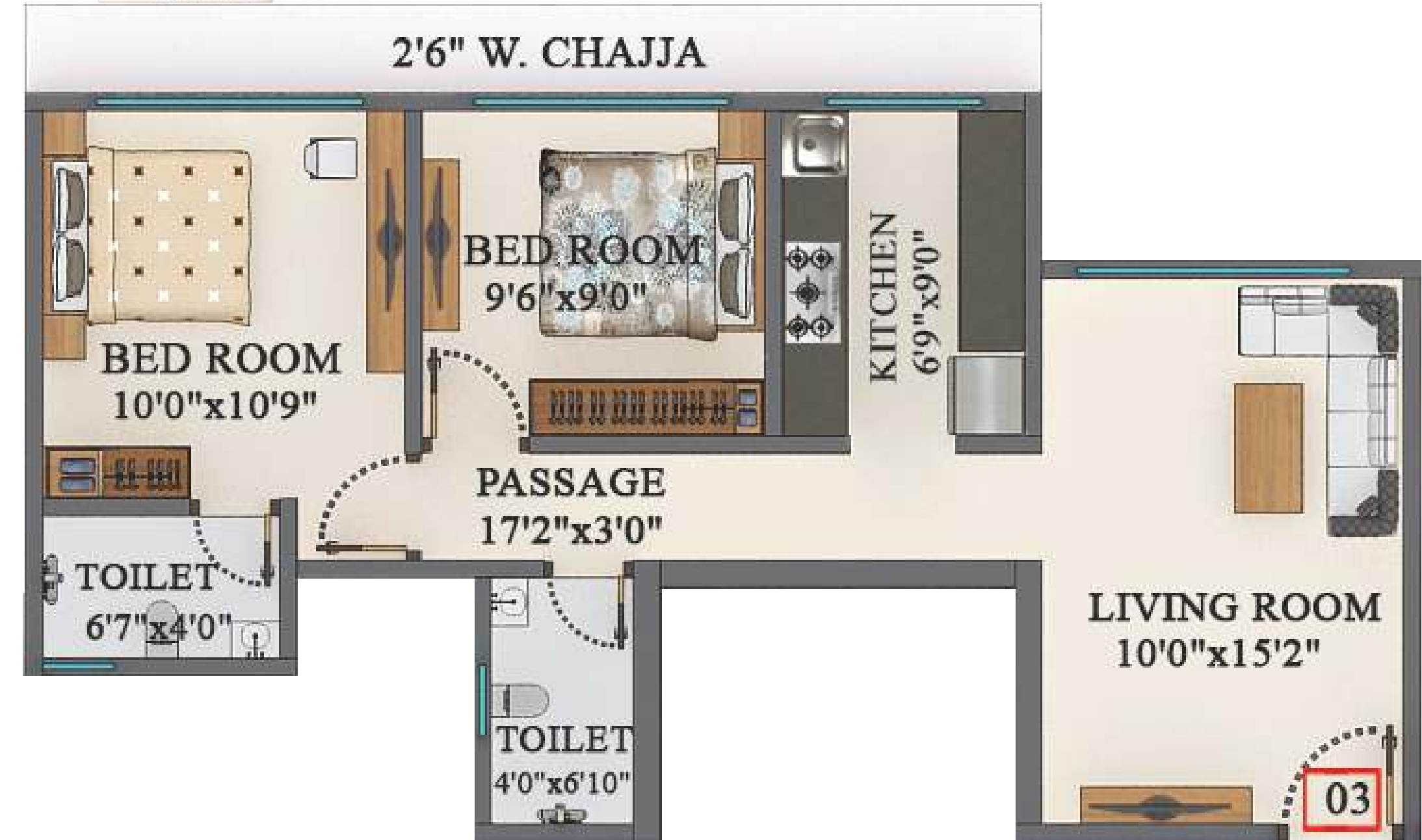


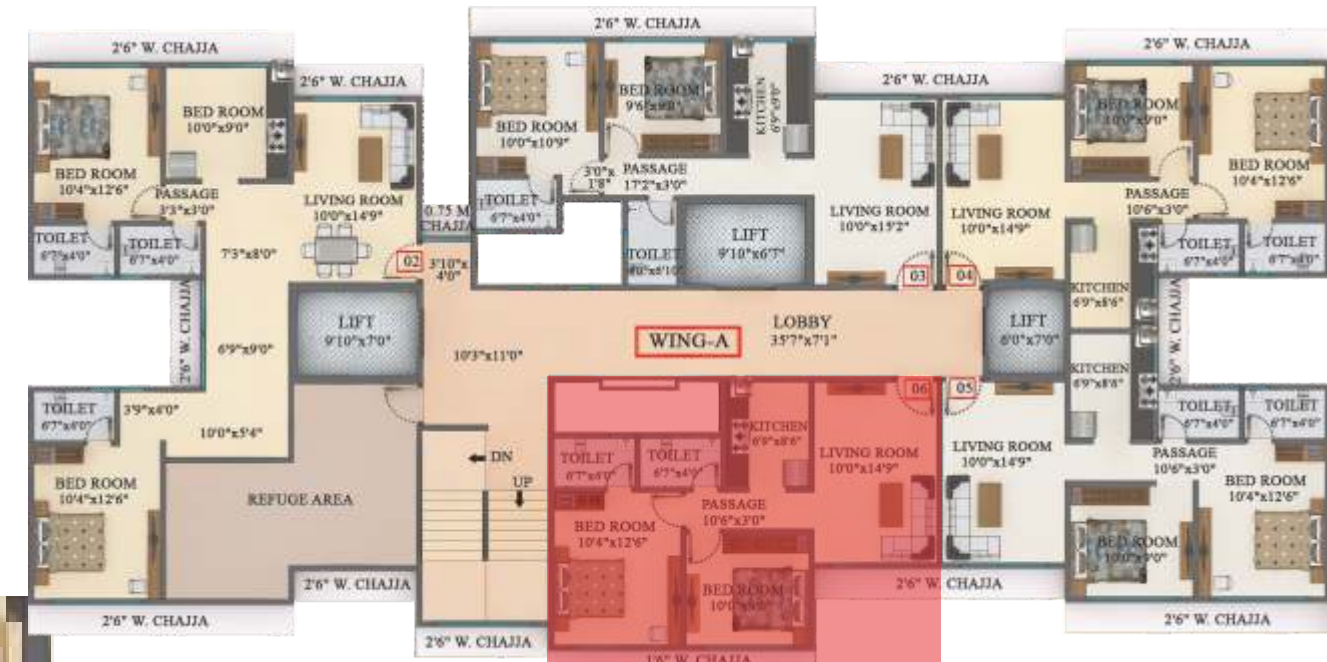
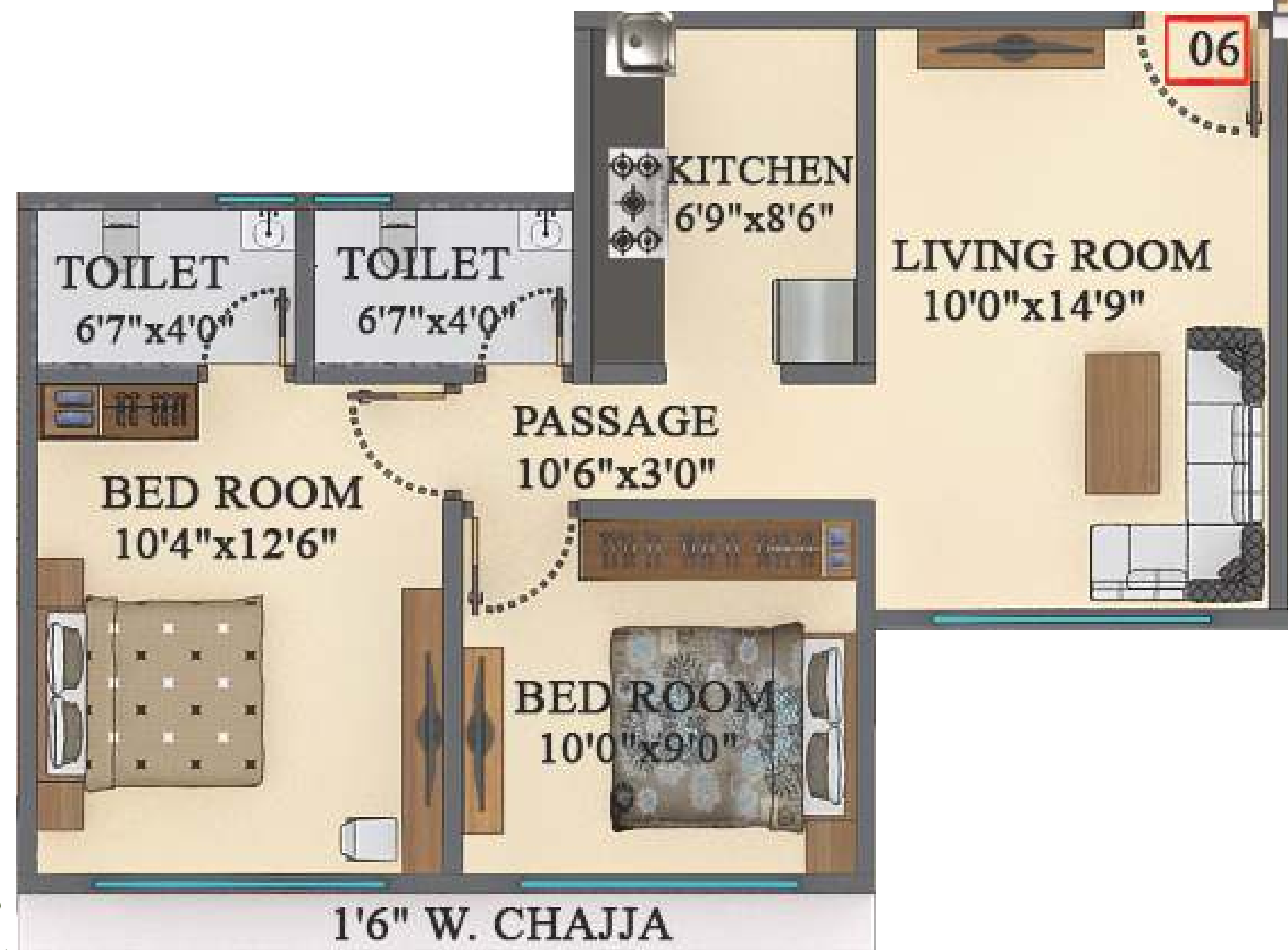


**A-Wing (1st Floor)
Flat No.01
539.49 Sq.Ft.**

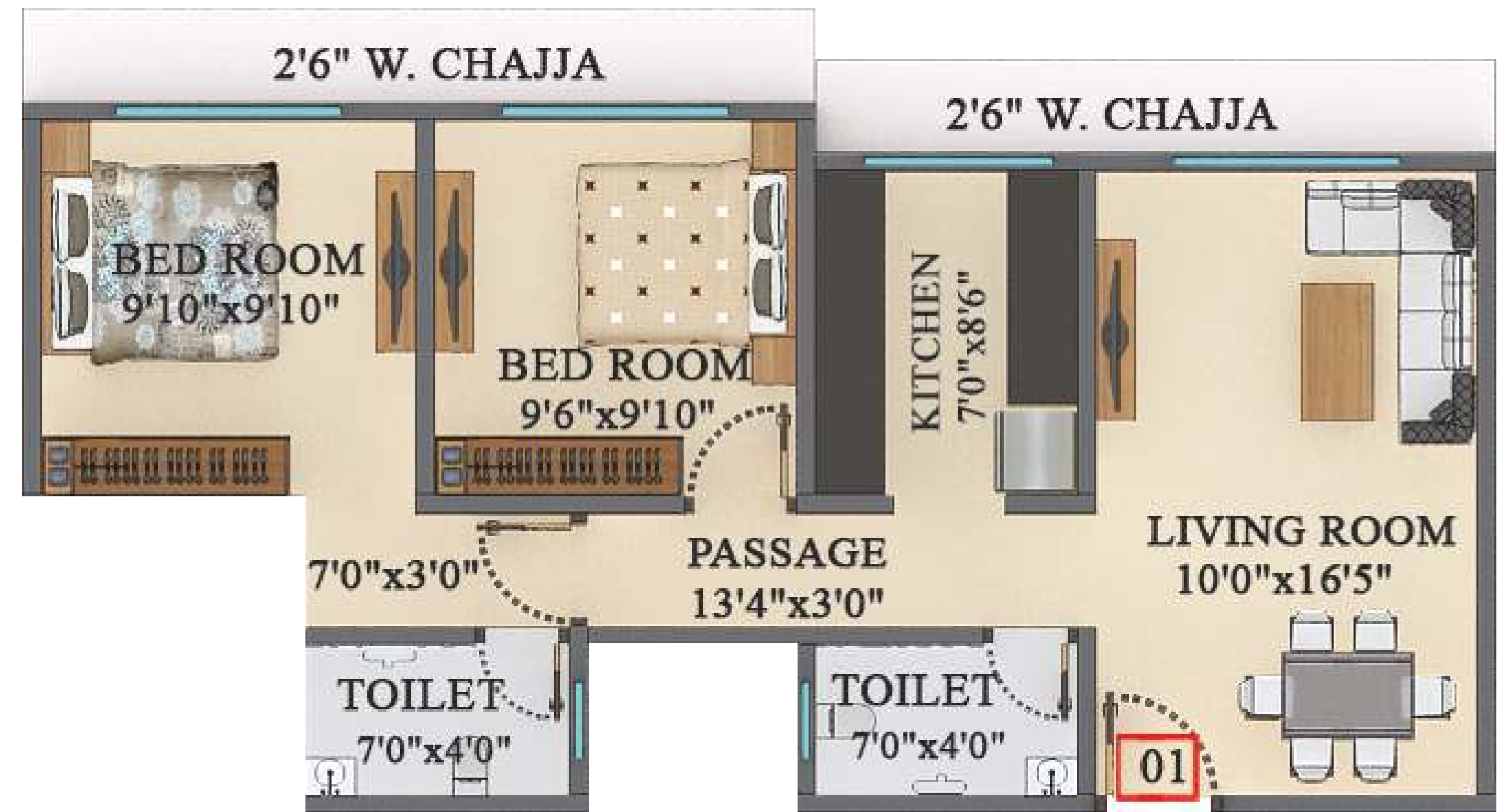
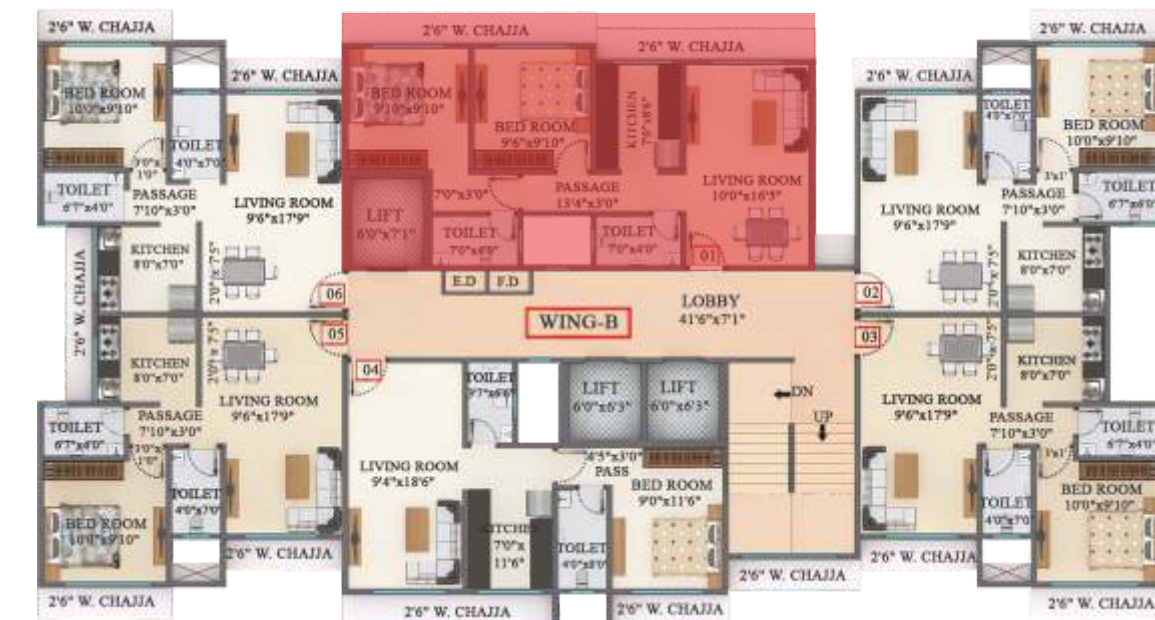


**A-Wing (Typical Floor)
Flat No.03
543.04 Sq.Ft.**

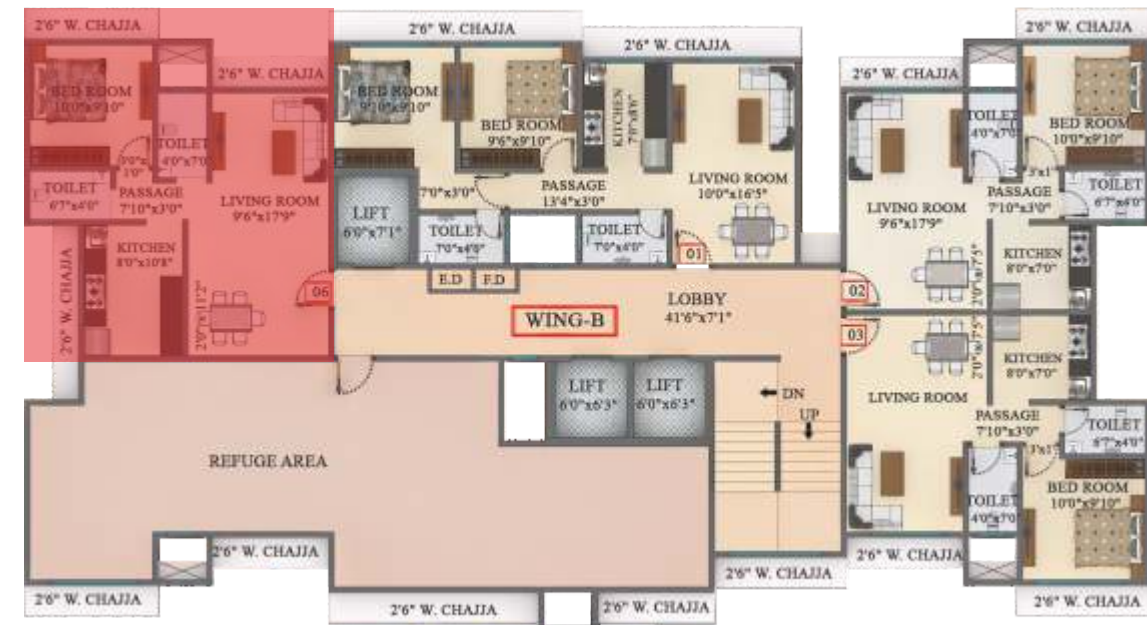




A-Wing (16th Floor)
Flat No.06
539.60 Sq.Ft.



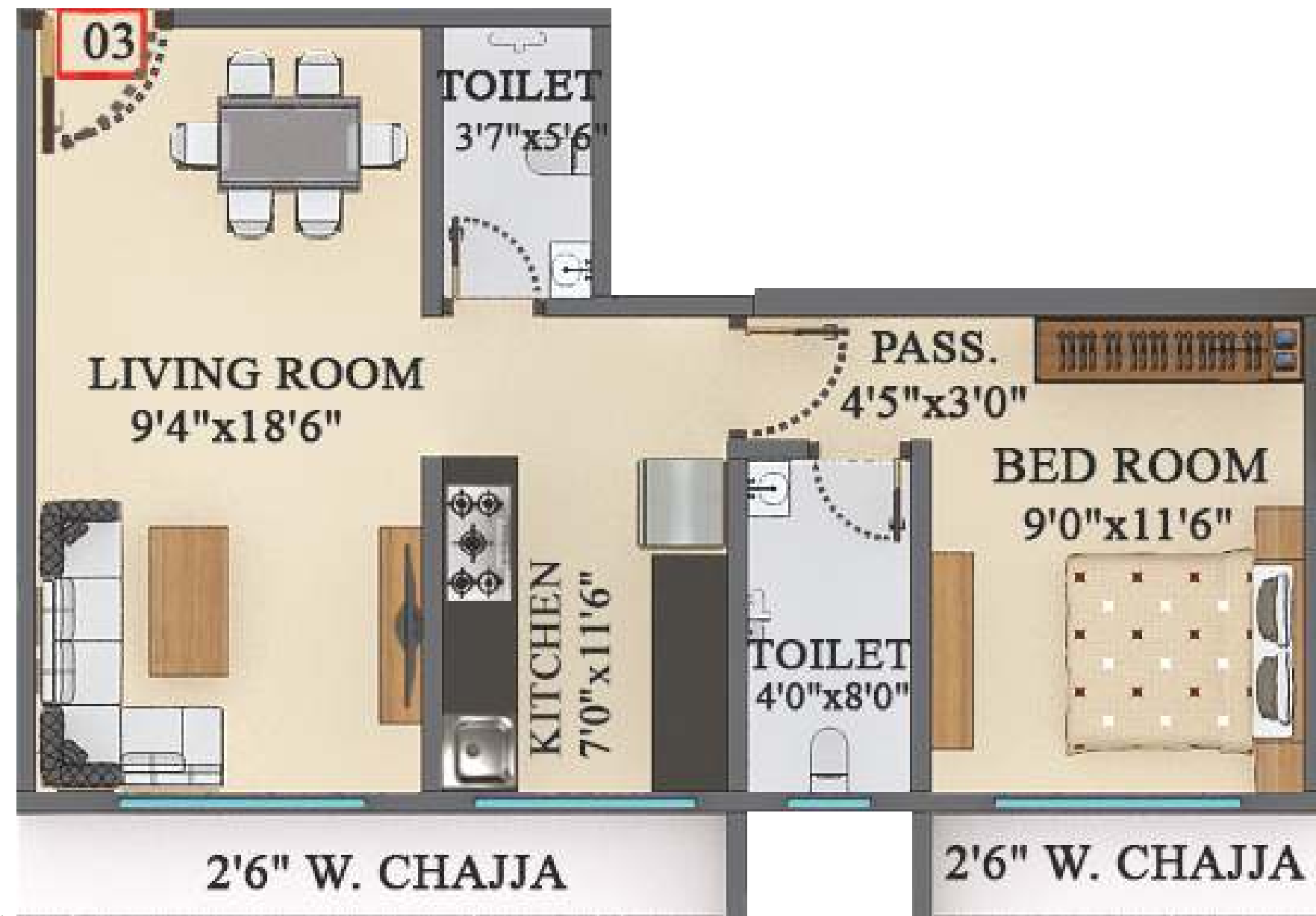
B-Wing (1st Floor)
Flat No.01
563.50 Sq.Ft.



B-Wing (9th Floor)
Flat No.06
516.56 Sq.Ft.



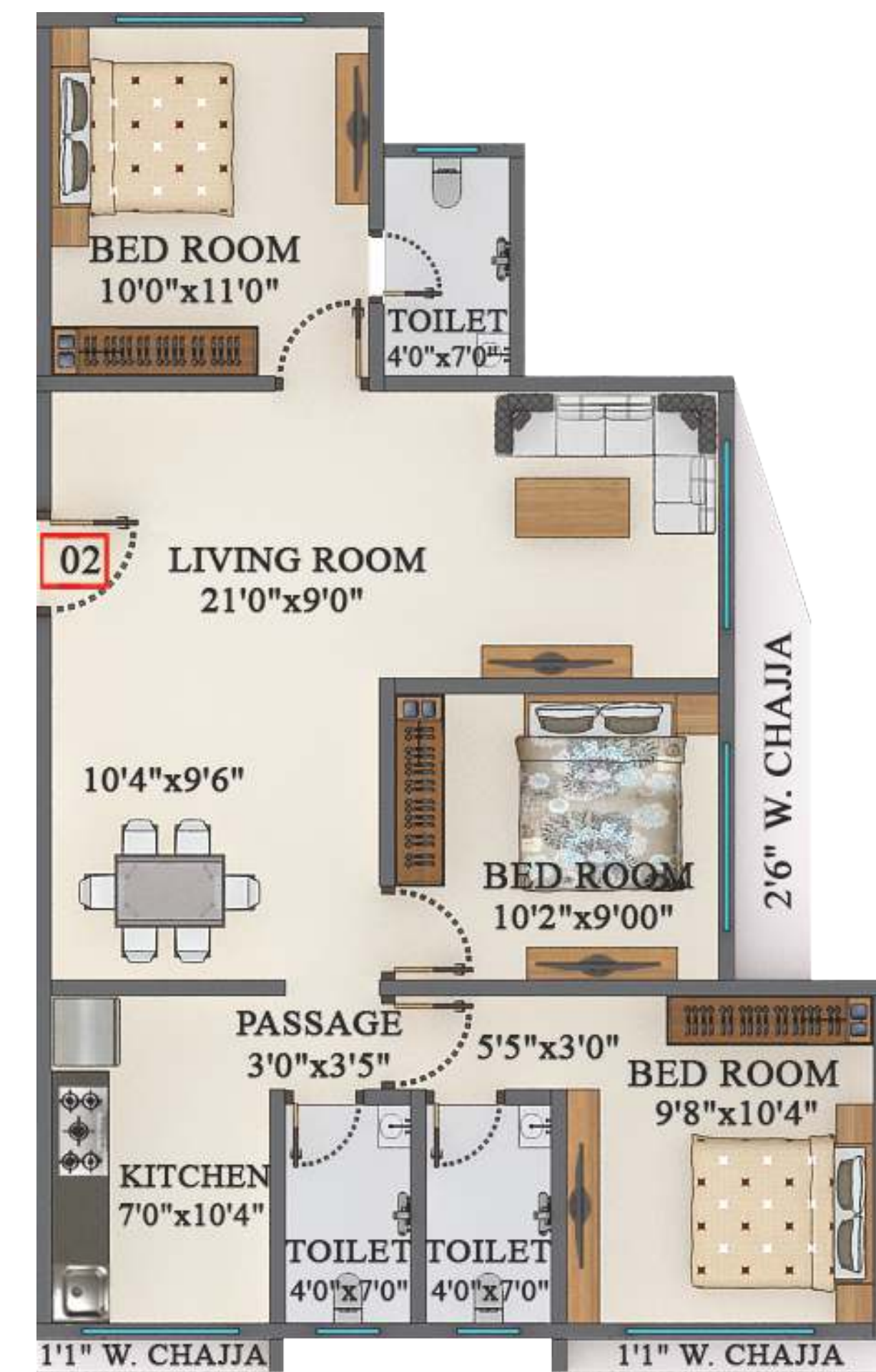
B-Wing (16th Floor)
Flat No.04
639.70 Sq.Ft.

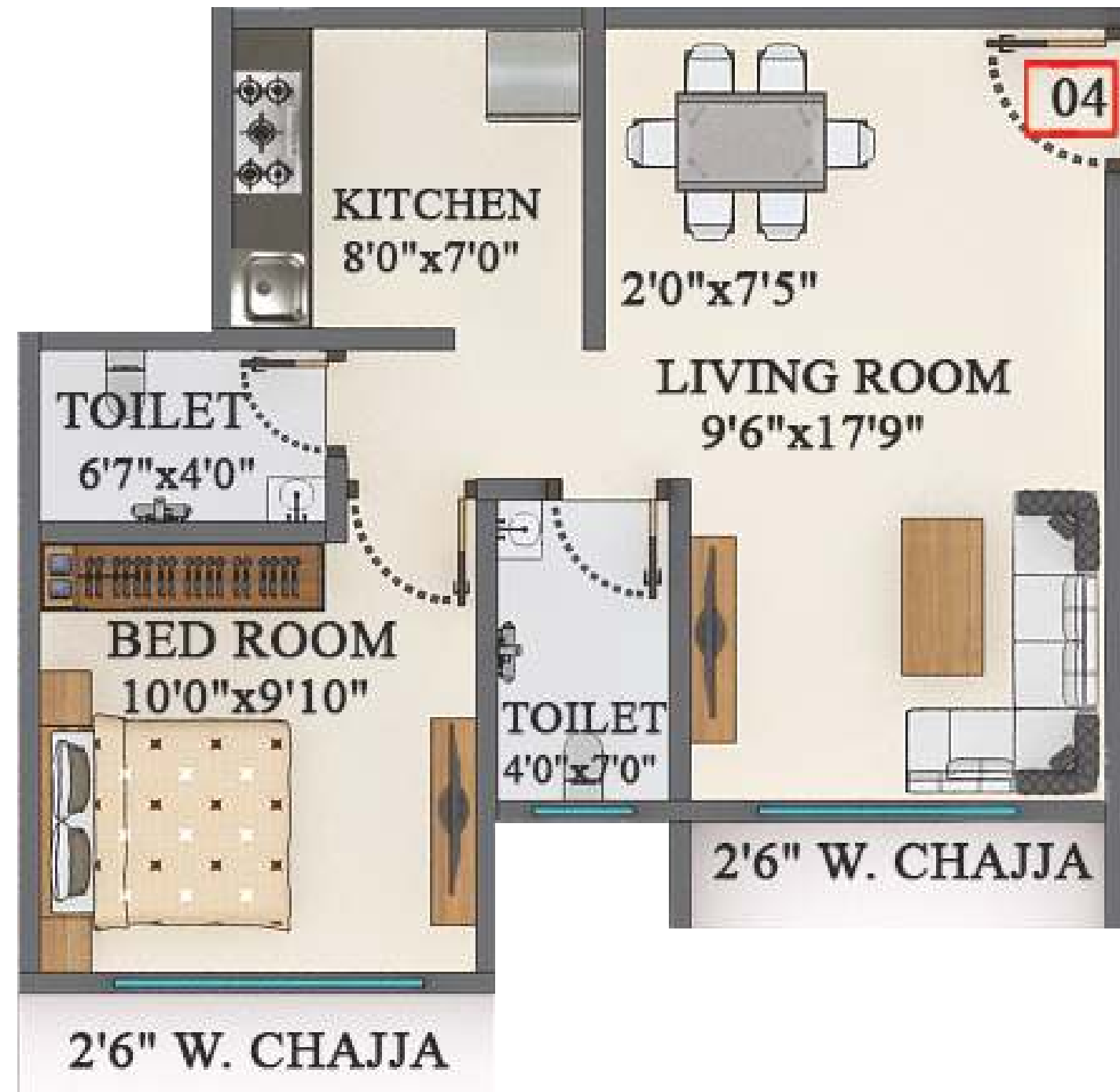


**C-Wing (1st Floor)
Flat No.03
447.89 Sq.Ft.**



**C-Wing (Typical Floor)
Flat No.02
817.63 Sq.Ft.**

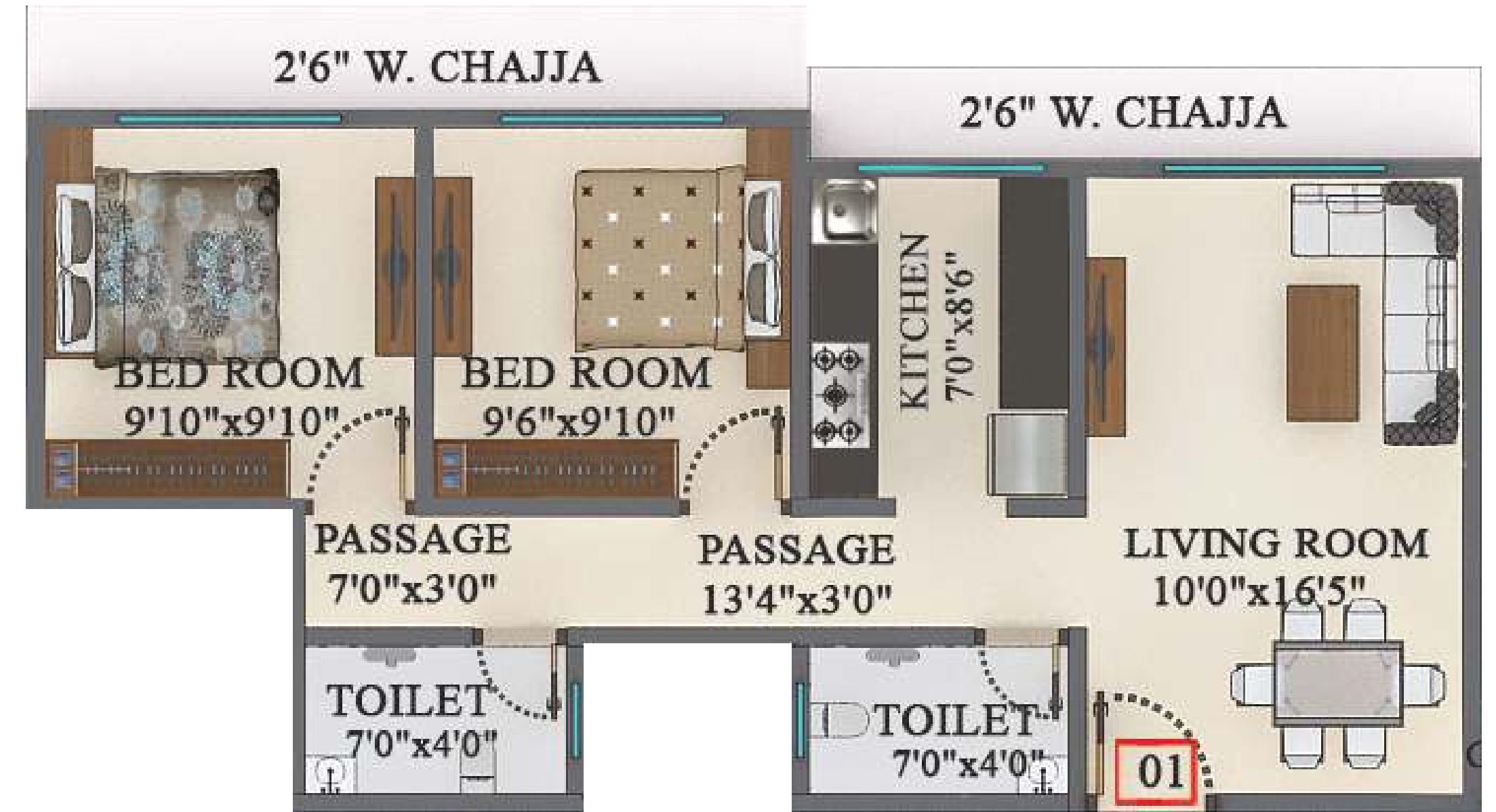


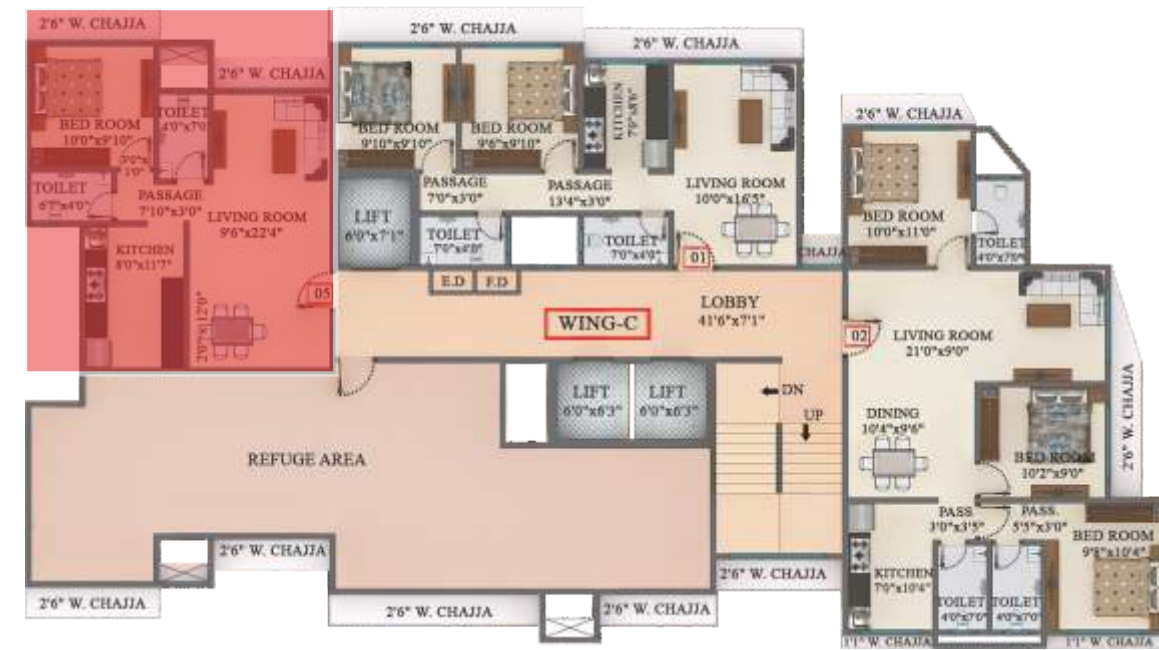


C-Wing (Typical Floor)
Flat No.04
441.22 Sq.Ft.

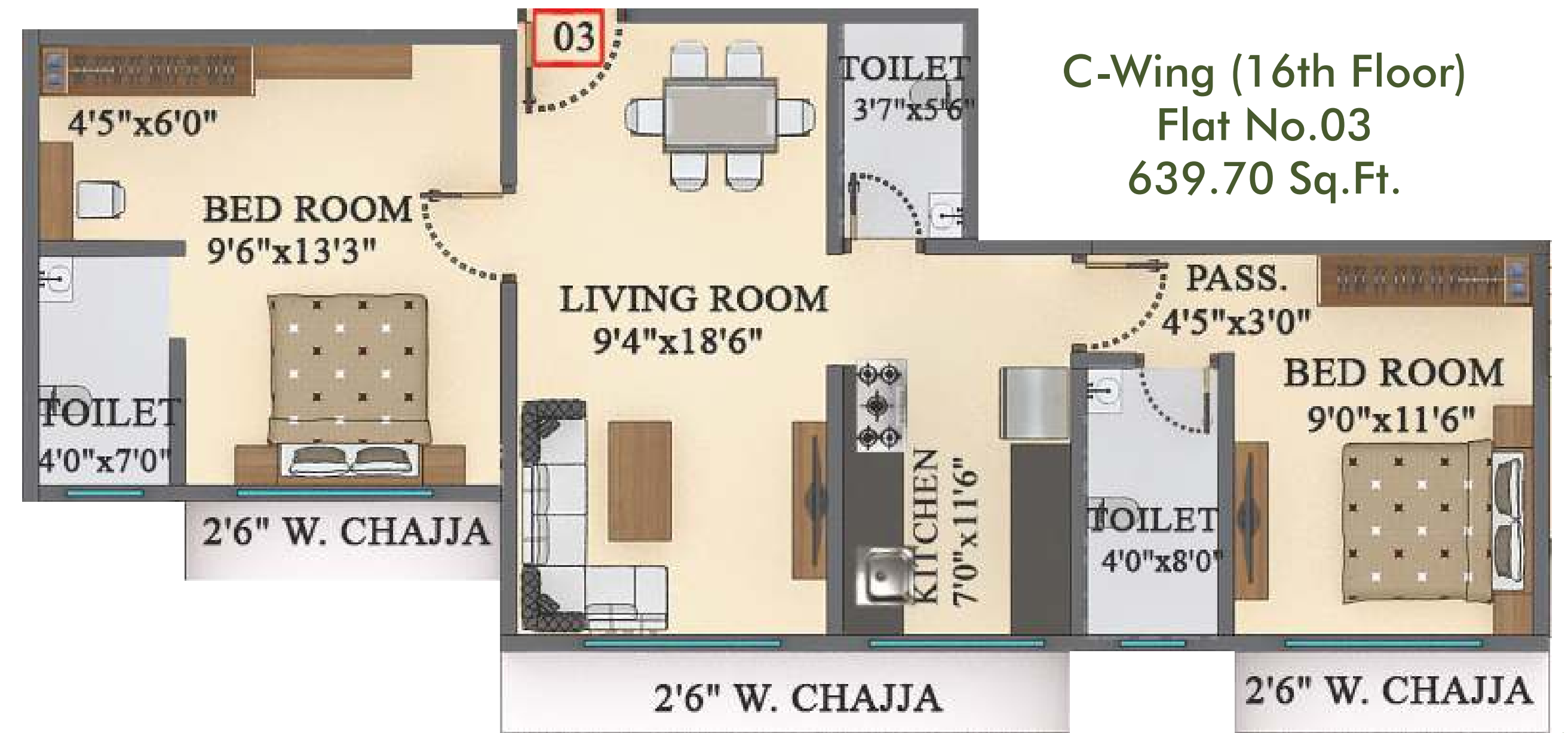


C-Wing (9th Floor)
Flat No.01
563.50 Sq.Ft.





**C-Wing (9th Floor)
Flat No.05
534.32 Sq.Ft.**



**C-Wing (16th Floor)
Flat No.03
639.70 Sq.Ft.**



Wing - "A"

Flat No	RERA "Carpet Area"
1	539.49 Sq.Ft.
2	539.49 Sq.Ft.
3	543.04 Sq.Ft.
4	540.67 Sq.Ft.
5	539.49 Sq.Ft.
6	539.60 Sq.Ft.

Wing - "B"

Flat No	RERA "Carpet Area"
1	563.50 Sq.Ft.
2	441.22 Sq.Ft.
3	441.22 Sq.Ft.
4	447.89 Sq.Ft.
5	441.22 Sq.Ft.
6	441.22 Sq.Ft.

Wing - "C"

Flat No	RERA "Carpet Area"
1	563.50 Sq.Ft.
2	817.63 Sq.Ft.
3	447.89 Sq.Ft.
4	441.22 Sq.Ft.
5	441.22 Sq.Ft.

Typical Floor Plan

2nd, 3rd, 4th, 5th, 6th, 7th, 8th, 10th, 11th, 12th, 13th, 14th, 15th & 17th Floor



WING-A

WING-B

WING-C

Wing - "A"

Flat No	RERA "Carpet Area"
1	539.49 Sq.Ft.
2	539.49 Sq.Ft.
3	543.04 Sq.Ft.
4	540.67 Sq.Ft.
5	539.49 Sq.Ft.
6	539.60 Sq.Ft.

Wing - "B"

Flat No	RERA "Carpet Area"
1	563.50 Sq.Ft.
2	441.22 Sq.Ft.
3	441.22 Sq.Ft.
4	447.89 Sq.Ft.
5	441.22 Sq.Ft.
6	441.22 Sq.Ft.

Wing - "C"

Flat No	RERA "Carpet Area"
1	563.50 Sq.Ft.
2	817.63 Sq.Ft.
3	447.89 Sq.Ft.
4	441.22 Sq.Ft.
5	441.22 Sq.Ft.





Wing - "A"

Flat No	RERA "Carpet Area"
1	539.49 Sq.Ft.
2	539.49 Sq.Ft.
3	543.04 Sq.Ft.
4	790.62 Sq.Ft.

Wing - "B"

Flat No	RERA "Carpet Area"
1	563.50 Sq.Ft.
2	441.22 Sq.Ft.
3	441.22 Sq.Ft.
6	516.56 Sq.Ft.

Wing - "C"

Flat No	RERA "Carpet Area"
1	563.50 Sq.Ft.
2	817.63 Sq.Ft.
5	534.32 Sq.Ft.



Wing - "A"

Flat No	RERA "Carpet Area"
2	803.96 Sq.Ft.
3	543.04 Sq.Ft.
4	540.67 Sq.Ft.
5	539.49 Sq.Ft.
6	539.60 Sq.Ft.

Wing - "B"

Flat No	RERA "Carpet Area"
1	563.50 Sq.Ft.
2	441.22 Sq.Ft.
3	441.22 Sq.Ft.
4	639.70 Sq.Ft.
6	441.22 Sq.Ft.

Wing - "C"

Flat No	RERA "Carpet Area"
1	563.50 Sq.Ft.
2	817.63 Sq.Ft.
3	639.70 Sq.Ft.
5	441.22 Sq.Ft.



Seamlessly Connected To All Key Locations In Vicinity.



Near By



Railway Station



Mosque



Bus-stop



Bank



Hospital



Highway Connectivity



SAYBA

R E S I D E N C Y

Developer: Star Rise

For Bookings Contact : +91 86574 50668 / +91 86574 50676

Site Address: Building No. 89 & 90, Now Known As Nehru Nagar Shree Krupa CHS LTD. On Plot Bearing Cts No.6(FT),
Village Kurla Part III, At Nehru Nagar Mhada Layout, Mother Dairy Road, Kurla East, Mumbai - 400 024.

Email: contactus@saybagroup.com • Web : www.saybagroup.com

ARCHITECT
Ellora Project Consultants Pvt. Ltd.

R.C.C. CONSULTANT
Ellora Project Consultancy Services

LEGAL ADVISOR
Pandya & Poonawala Advocate & Solicitor

Project Registered Under MAHARera No.: P51800027913