



# SONI PARK SOUTH





## HOSPITALS

Fortis Hospital	7.0 KM
Jayadeva Hospital	5.0 KM
Vydehi Hospital	3.0 KM
Sagar Hospital	6.5 KM
Apollo Hospital	1.0 KM

## SCHOOLS

Lords School	2.6 KM
Sri Chaitanya School	7.1 KM
Cambridge School	8.1 Km
The South School	7.5 KM
The Brigade School@ J.P. Nagar	2.2 KM
New Oxford Public School	3.4 KM
Indian Institute Of Management	4.2 KM

## TECH PARK

Robert Bosch, Global Tech Park	7.7 KM
Hustlehub Tech Park	10.5 KM
Vaishnavi Tech Park	3.8 KM
Global Tech Park	10.8 KM
Pratik Teck Park	17.6 KM
Equinox Tech Park	16.0 KM

## MALLS

Royal Meenakshi Mall	2.6 KM
Prime Spectrum Mall	2.1 KM
Bangalore Central	1.8 KM
Vega City Mall	4.2 KM
Gopalan Innovation Mall	4.9 KM
Dmart- Hongasandra	5.1 KM

## SANITARY AND BATHROM FIXTURES

Wall Mounted sanitary ware in all toilets jaguar/kohler or equivalent fixtures for all Toilets Health Faucet and shower for all toilets provision for Geysers and Exhaust Fan.

## DADOING

Toilets ceramic glazed tiles dado roof height  
Kitchen ceramic tiles above the Kitchen counter  
utility ceramic tiles upto 10 feet height

## WATER SUPPLY

Adequate Borewell and BWSSB water supply

## KITCHEN

Granite top platform with stainless steel sink and 2 feet high glazed tiles above platform

## LIFT FACILITY

Automatic( 8 passenger lift SCHINDLER Brand)

## CAR PARKING

Exclusive covered car parking for each flat at stilt

## GENERATOR BACKUP

Internal backup power upto 1 km for each flat full backup for lift and common passages  
External 100% Fully Back up  
Rain Water Harvesting

## SECURITY

Intercom Facility and round the clock security with CCTV Surveillance in parking and Common Corridors area

Fully Equipped Gym



## SWIMMING POOL

Roof Top Pool with Toddlers Pool

## PARTY HALL

Ample Seating





# Specifications

## FOUNDATION AND SUPER STRUCTURE

RCC footing with framed structure  
internal/external walls solid concrete  
blocks(APCO/ equivalent) All Elements of  
structure are designed for earthquake  
resistance compliance.

## ROOF SLAB

Reinforced cement concrete slab with  
water proofing.

## CEILING HEIGHT

10 feet

## PLASTERING

Internal plastering with sponge finish,  
External plastered with sponge finish and  
ceiling plastered with Lime Rendering.

## PAINTING

Interior walls and ceiling- Emulsion paint  
with Roller Finish Exterior Walls- Emulsion  
Weather coat anti fungal  
Toilet Ceiling- Anti Fungal Paint.

## FINISHES/FLOORING

Living/dining: Vitrified Tiles  
Kajaria/Varmora or equivalent  
Bed Room: Vitrified Tiles Kajaria/Varmora  
or equivalent  
Kitchen & Utility: Vitrified Tiles kajaria/  
Varmora or equivalent  
Powder room & Toilet: Anti Skid Designer  
kajaria/Varmora or equivalent  
Balconies: Anti Skid Designer  
kajaria/Varmora or equivalent  
Common Area: Granite/Marble

## WINDOW & VENTILATORS

3 layered Multitrack with Mosquito Mesh  
UPVC Window Fenestech or Equivalent

## DOORS

Entrance Doors: Teak wood frame with  
paneled shutters  
Internal Doors: Hard wood frame flush  
shutters  
Toilet Doors: Hard wood frame flush Door  
coated with waterproof Anti fungal paint

## ELECTRICAL WORKS

Provision for AC point in living room and  
master bedroom  
modular switches and sockets ( Anchor/  
GM or Equivalent)  
TV AND Telephone points in living area  
and Bed rooms  
Provision for WIFI Connectivity  
Fire resistant Electrical wires of  
Anchor/Finolex or Equivalent in common  
areas



# AMENITIES



SWIMMING POOL



POWER BACKUP



VEHICLE CHARGER



PARK



CHILDRENS PLAY AREA



INTERCOM FACILITIES



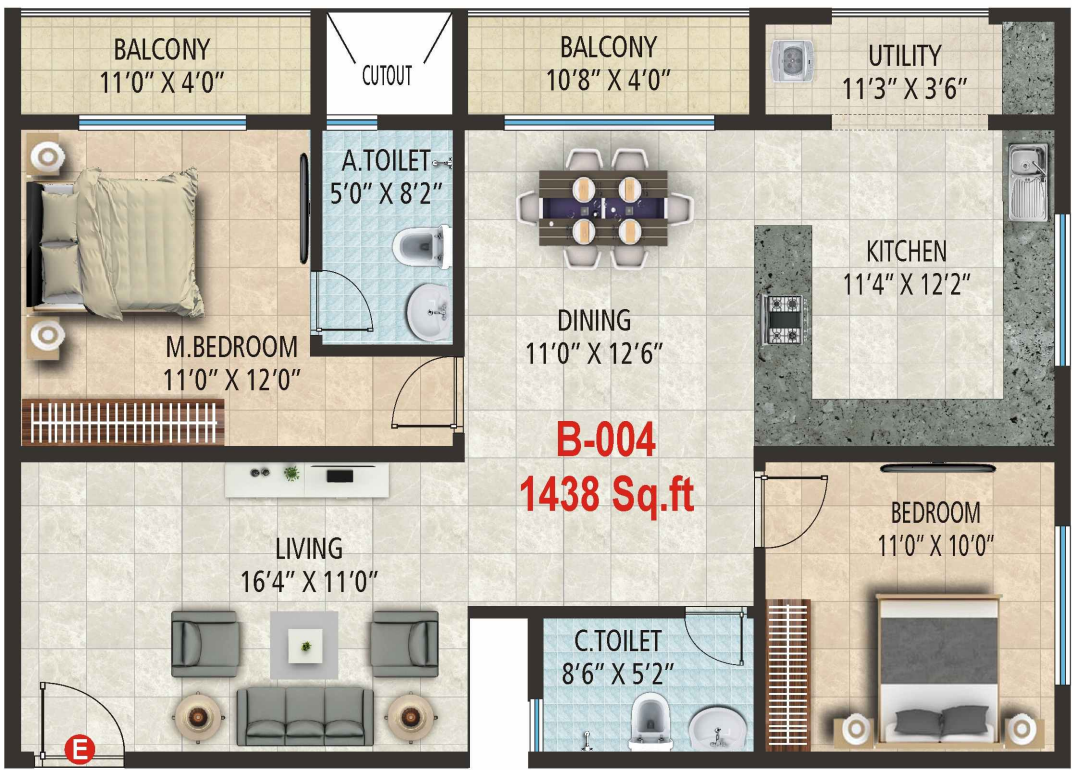
GYM



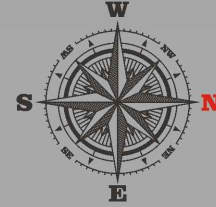
PARTY HALL



24HRS SECURITY

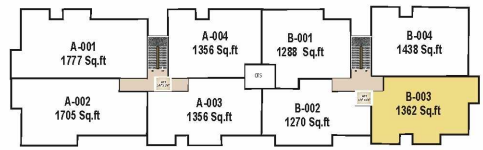
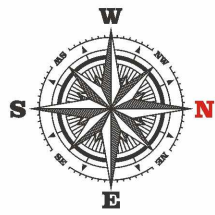


**2 BHK**  
1438 sqft

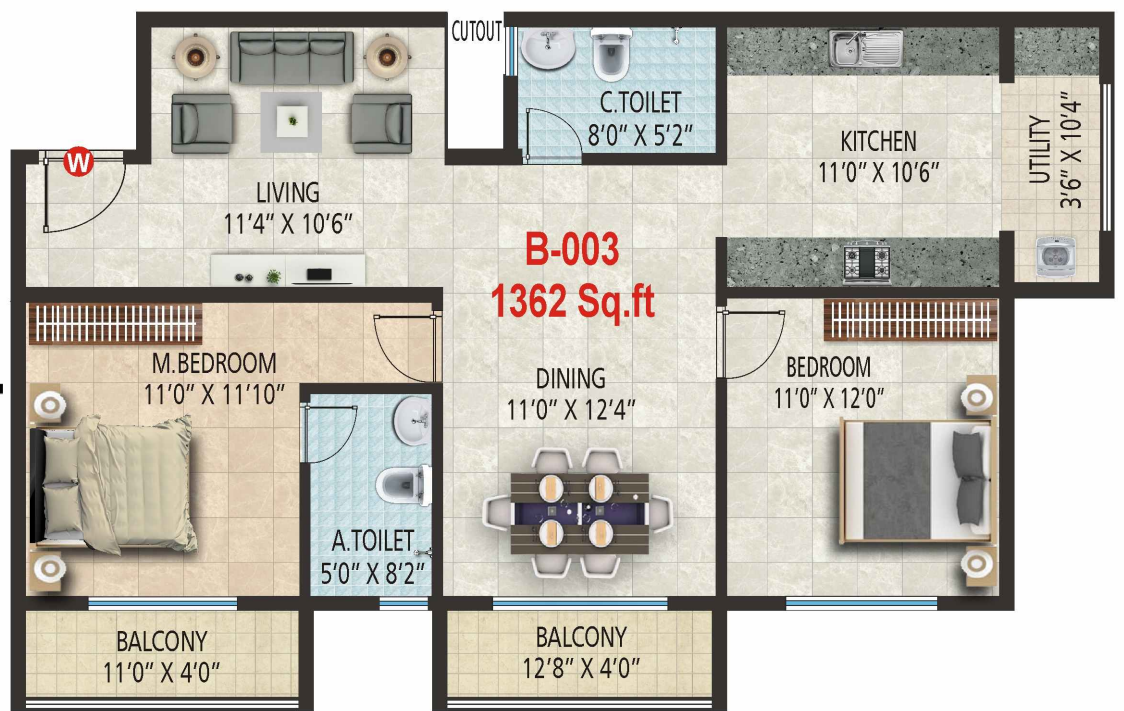


KEY PLAN

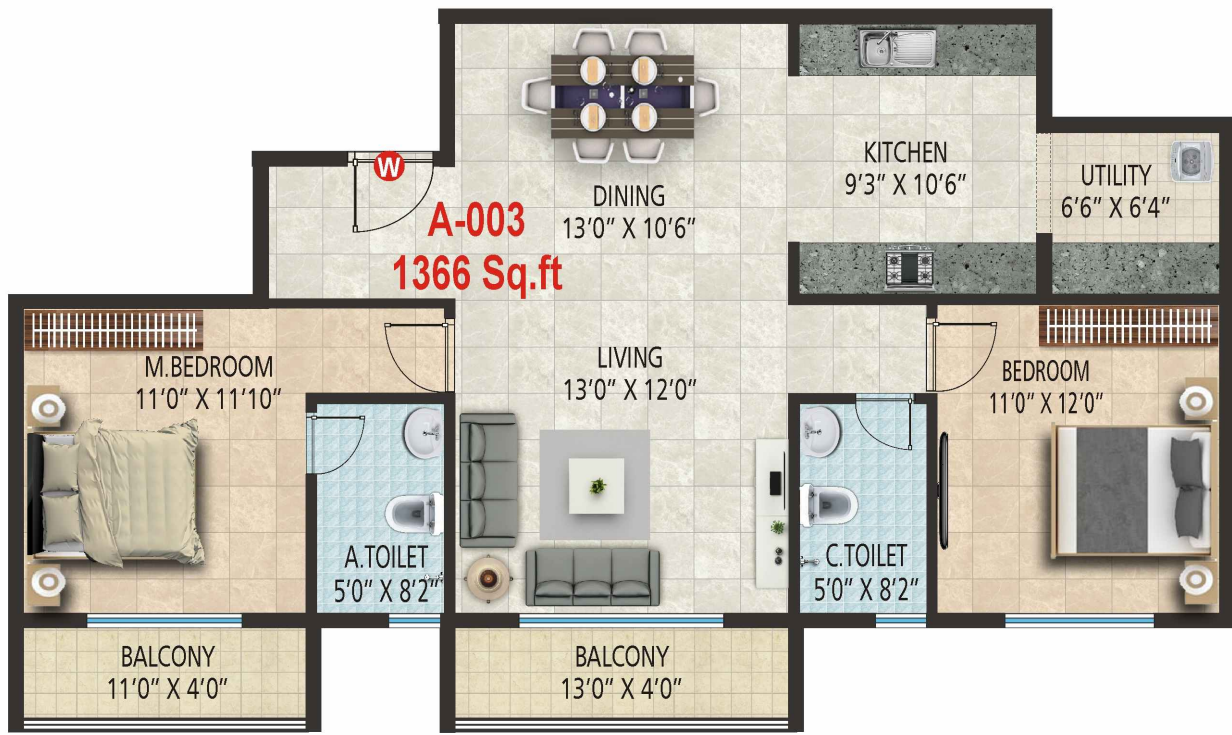
**2 BHK**  
1362 sqft



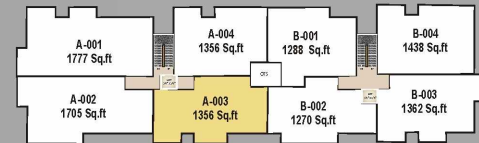
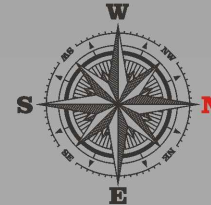
KEY PLAN





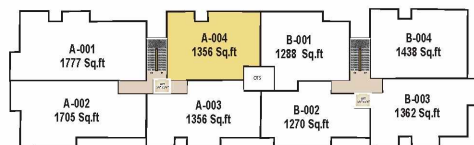
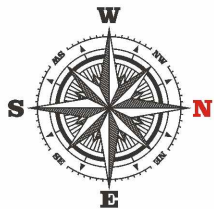


**2 BHK**  
**1366 sqft**

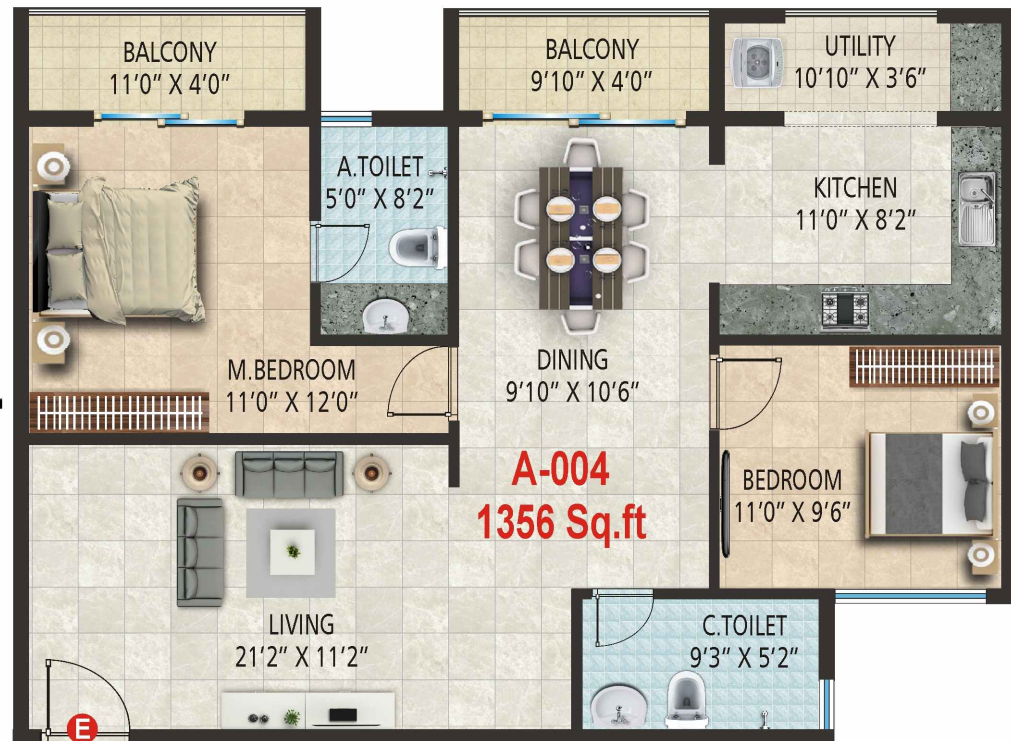


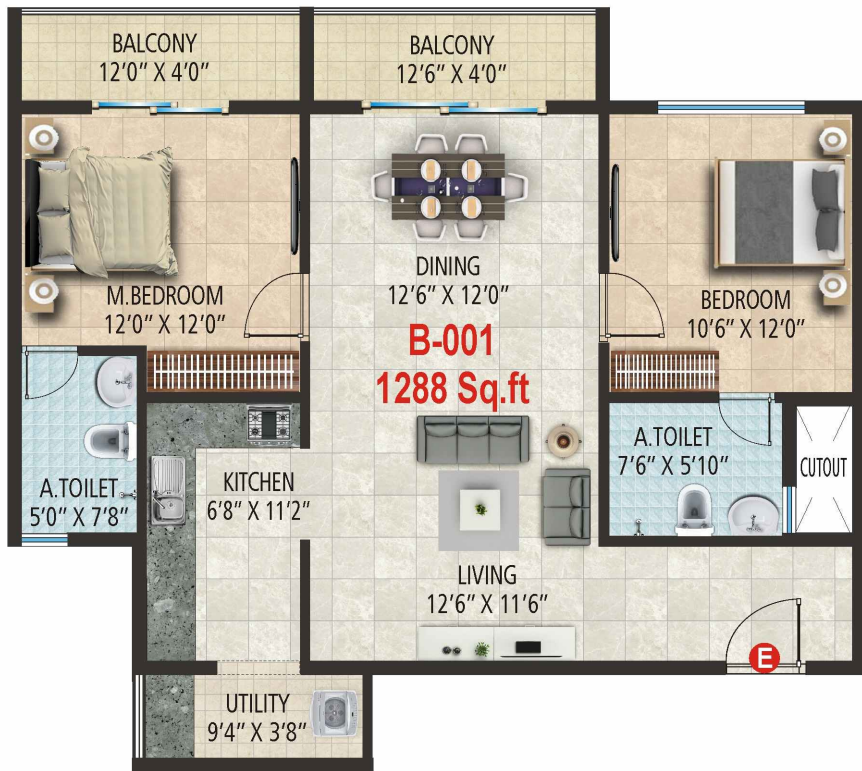
KEY PLAN

**2 BHK**  
**1356 sqft**

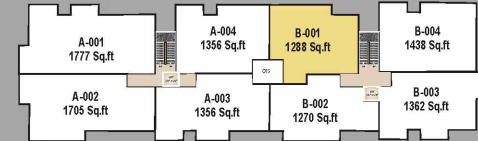
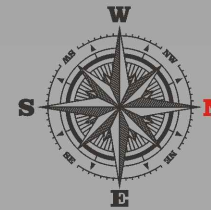


KEY PLAN



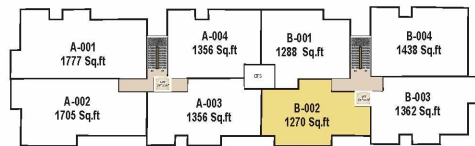
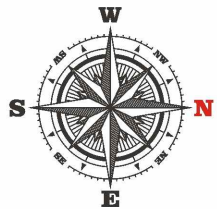


**2 BHK**  
1288 sqft

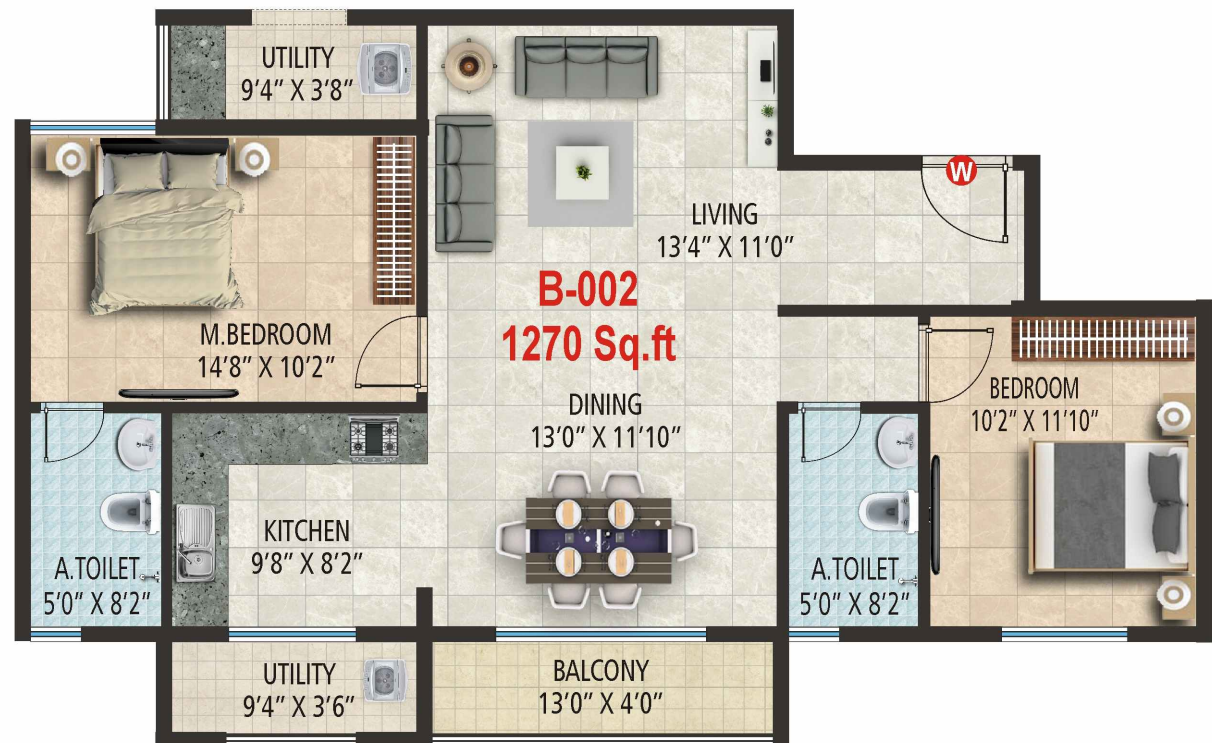


KEY PLAN

**2 BHK**  
1270 sqft



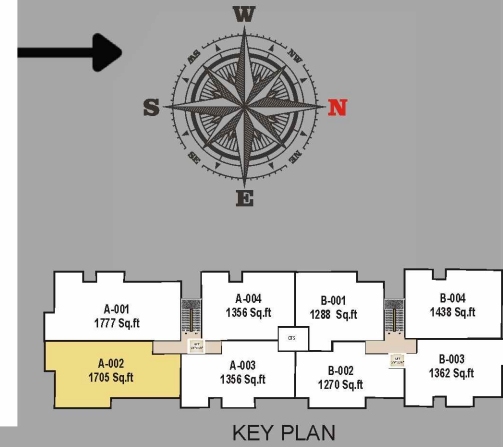
KEY PLAN



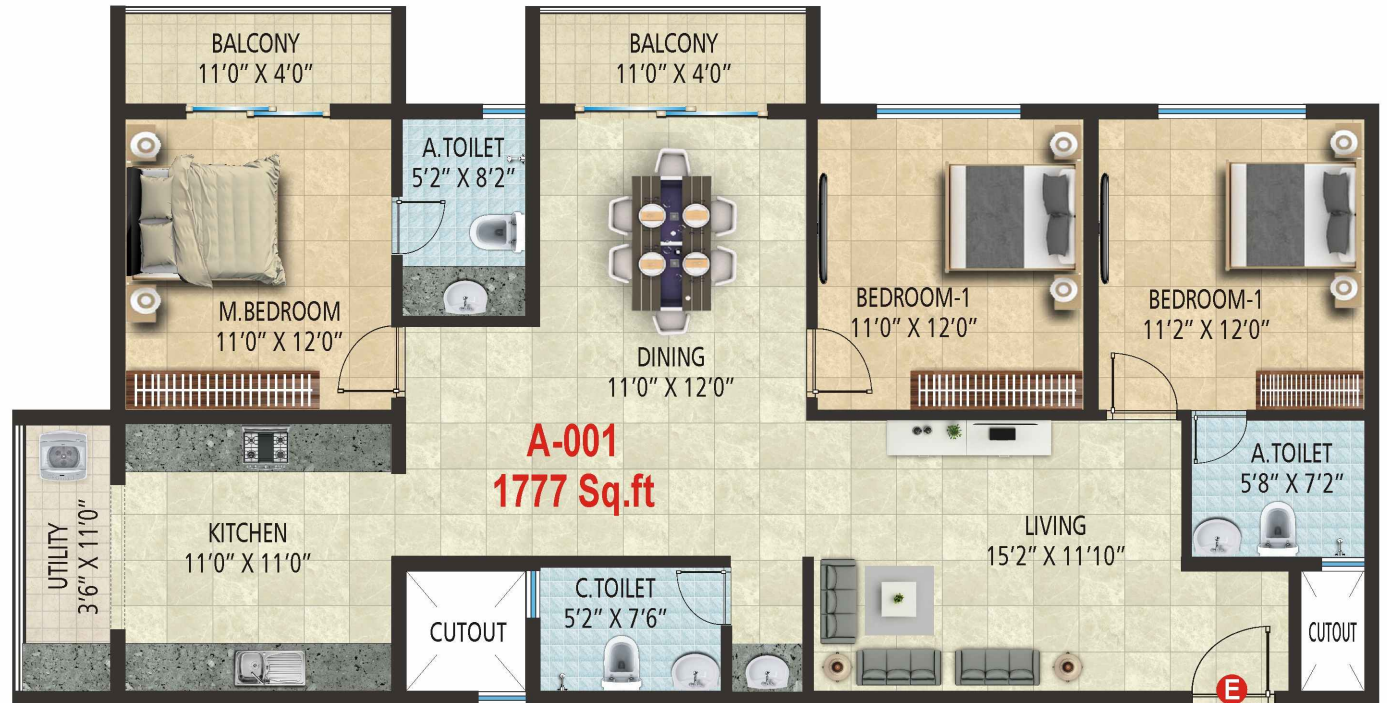
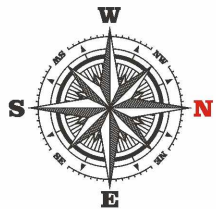





**3 BHK**  
1705 sqft



**3 BHK**  
1777 sqft







**If You Truly  
Love Nature,  
You'll Find  
Beauty  
Everywhere.**



# LUXURY LIVING WITH A HEART OF "GREEN"



WEST BY ROAD ROAD

R O A D

SOUTH BY ROAD ROAD

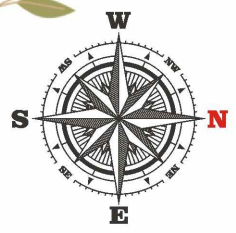
R O A D

EAST BY ROAD



### LEGEND

- 1-ENTRY
- 2-EXIT
- 3-KID'S POOL
- 4-SWIMMING POOL
- 5-MULTIPURPOSE HALL
- 6-KID'S PLAY AREA
- 7-GARDEN AREA



## MASTER PLAN









**Inspire the way you live  
every day.**

A model apartment complex for a chosen few is available at park square, which is tucked away amid 20,000 square feet of beautifully landscaped grounds. park square, a low-density development, was created to provide you with a better quality of life as well as a fantastic investment opportunity.

**CREATIVE IMPRESSION**

**UNIT CONFIGURATION: 2 AND 3 BEDROOMS  
THERE ARE 32 TOTAL UNITS**





## ABOUT US

The project's name  
"PARK SOUTH"

Reffer to the location on bannerghatta road in South Bangalore that faces the proposed park in the South.

The Home's synergization is this project's key goal. balconies on the both sides of the road, which border the site on the east and west, provide for natural air cooling and environmental friendliness for every unit.

Due to the site's linear layout,it has a thin facade. The residents must live comfortably inside this building despite its location in a busy and noisybregion.



*Thank you*

[soniparksouth.sales@gmail.com](mailto:soniparksouth.sales@gmail.com)



[Scan Me For Location](#)

**Project @:**

**1st cross, 3rd Main Road,  
MS Ramaiah City Main Road,  
Raghavendra Layout, JP Nagar,  
7th Phase, Arekere, Bengaluru,  
Karnataka 560076.**

