



evo homes



*Live Forever*

The quietude of the countryside coupled with technological advancement, soulful architecture, scenic surroundings and the warmth of home.



Step into the world of Evo Homes, where contemporary living and design thinking meet purposeful spaces. We believe luxury is a way of life, one that endows inspiration, style and substance.

Our bespoke spaces reflect the acumen and accomplishments of our clientele, down to the tiniest of their nuances. Home is where your heart is and we believe in creating spaces that are as unique as you are. Indulge in the ultimate living experience and discover the joys of living life to the fullest.



Experience unparalleled living where design and functionality merge to create homes that exude elegance and sophistication.

Evo Aeris Villas are the perfect amalgamation of aesthetics, functionality and sustainability. Villas are thoughtfully conceived to ensure a retreat from the chaos of everyday life. The design thinking approach provides both privacy and a sense of belonging to cater to the sensibilities of everyone.

From the intricacies of lighting design to the attempts aimed at curbing carbon emissions - the ethos of sustainability underpins the project's very foundation. Every endeavour is centered around reducing environmental impact while delivering excellence.

The location is a quiet port close to major IT and economic hubs and has become a highly coveted destination. With a flurry of ongoing infrastructure development projects, it has emerged as a place to be.

The Evo Aeris Villas epitomize the essence of design ingenuity, with a focus on crafting homes that will stand the test of time.



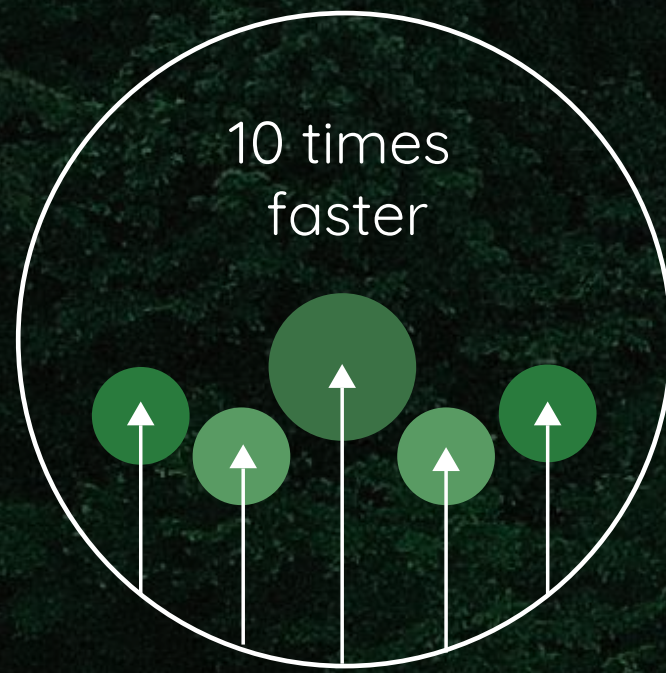


evo aeris

# Nature-Modernism

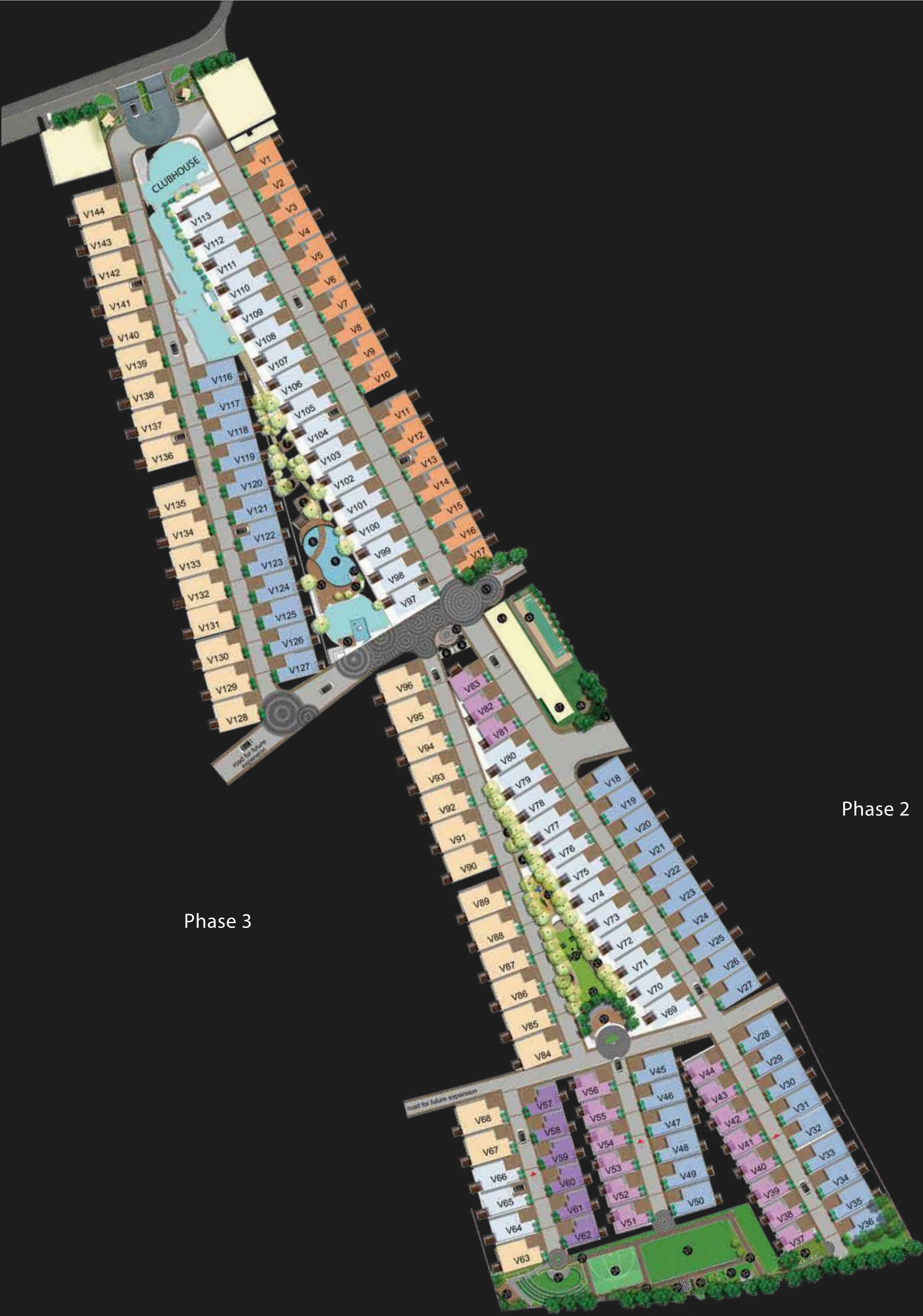
Evo Aeris Villas masterfully blends form and function to achieve an idyllic aesthetic. Embracing the Nature-Modernism philosophy which is central to its way of life, the architectural marvel combines the sophistication of modern design with the serenity of nature.

With a plethora of colours, textures, patterns and a wide range of customization options, the villas provide a canvas for homeowners to express their unique personality and style. Our luxury villas provide you the best of both worlds with a fusion of nature and modernity. We craft homes that cater to your unique sensibility without compromising on comfort and value. Evo Aeris features serene landscapes with private gardens and modern amenities to provide you with a reflective and premium experience.



# Miyawaki Landscape

Our meditative surroundings are crafted using the Miyawaki Technique, an approach that mimics a natural forest. The technique has become increasingly popular for its remarkable ability to accelerate growth by many folds while being cost-effective and self-sustaining in the long run. From preventing soil erosion to improving the water table and fostering microhabitats that promote biodiversity, this technique supports diverse ecosystems while enhancing the overall aesthetic appeal.



Phase 3

Phase 2

- 35x66 East Facing Villa
- 30x66 East Facing Villa
- 30x66 West Facing Villa
- 30x56 East Facing Villa
- 30x56 West Facing Villa
- 30x60 West Facing Villa
- Clubhouse

Phase 1 - 10.5 acres

Phase 2 - to be launched

Phase 3 - to be launched



Villa Snaps







Casual living spaces opening into the backyard



Living spaces nestled in the lap of nature



Bedroom Ground Floor



Living space - First Floor



Master Bedroom with walk-in wardrobe, private living and balcony



Kids Bedroom



Experience breezy evenings  
on an open terrace





# Club House

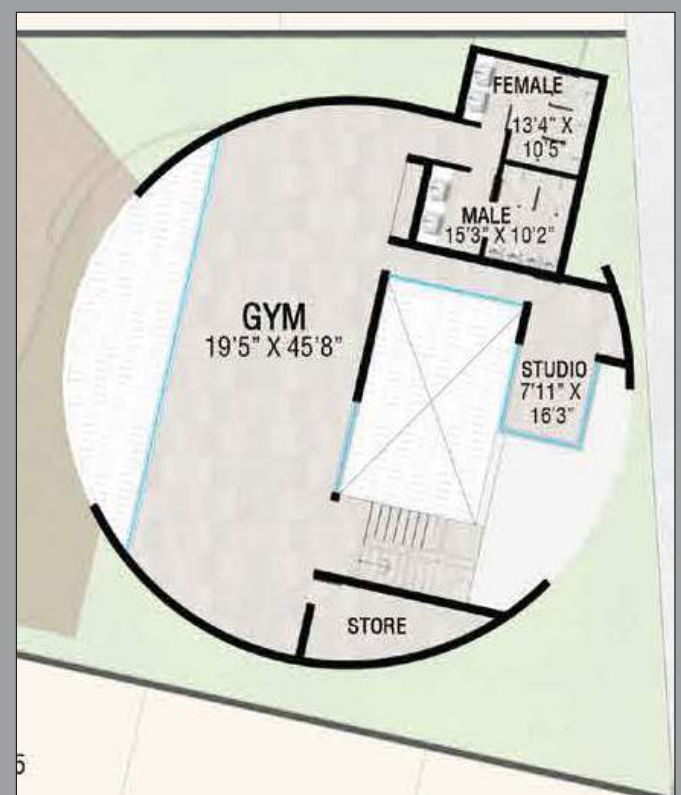
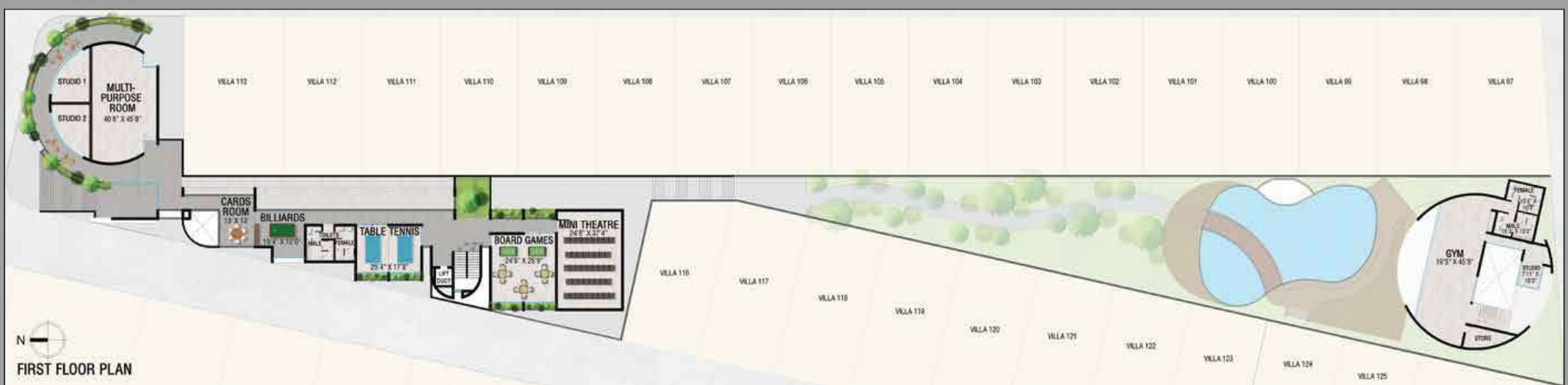
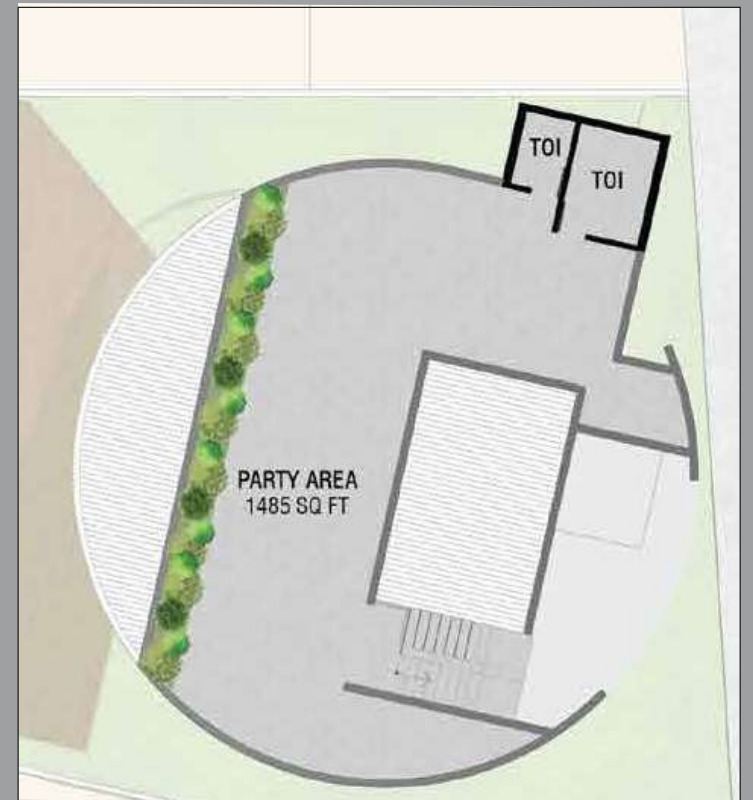
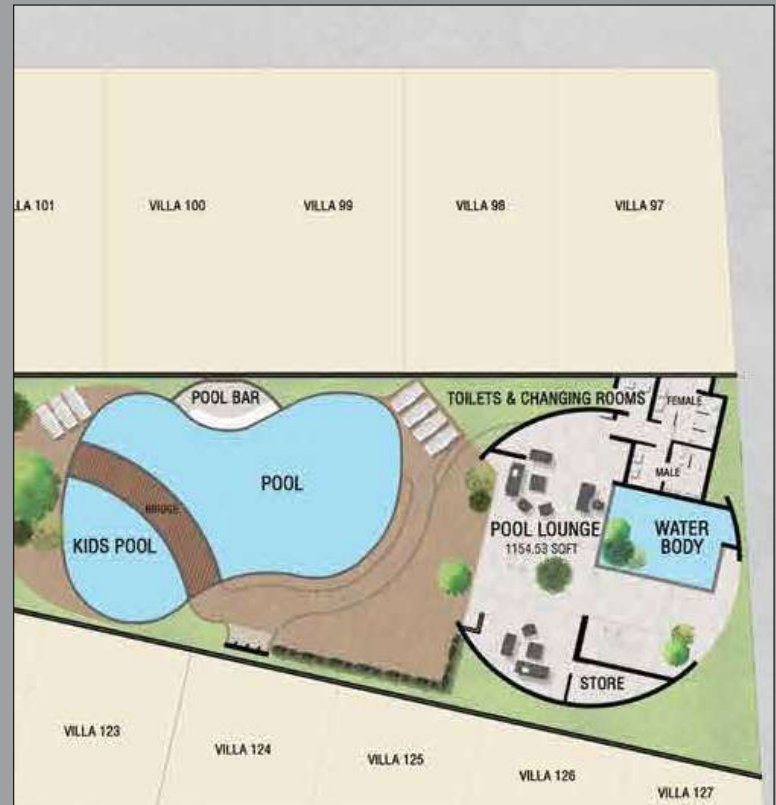
Club Evo offers you the epitome of luxury and exclusivity. With a sprawling space of 45000 sq ft and outstanding architecture, Club Evo is designed to suit your recreational needs and digital ways of work.

Take a dip in the pool while sipping on a refreshing drink from the bar or work out in the Gym. Indulge in a game of billiards and catch a movie in the mini cinema theater. Get lost in your favorite book in the library or take time off in the yoga studio. Get access to an unparalleled range of amenities to keep you engaged and entertained.

Club Evo also features a self-sustaining restaurant equipped with indoor and outdoor seating, ideal for a relaxed dining experience. The ballroom is the perfect venue for hosting larger celebrations, while the hobby rooms are designed to engage your little ones, from dance and art to tuitions.

We understand the importance of work-life balance, which is why we have built a large co-working space and conference room to cater to your work-from-home needs. Our well-appointed guest suites make your guests feel at home. We believe luxury should be an everyday experience where every moment is crafted to perfection.



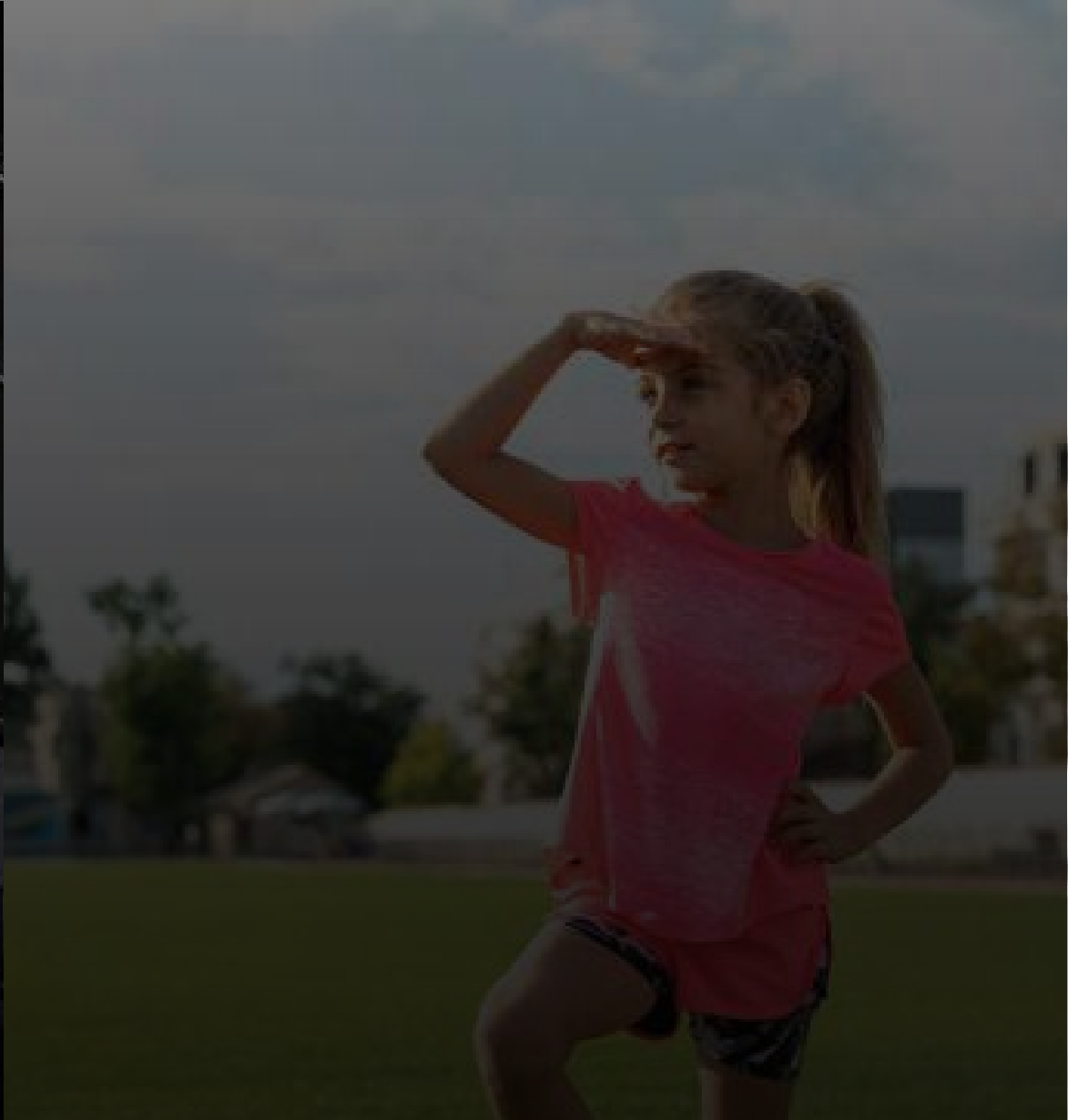
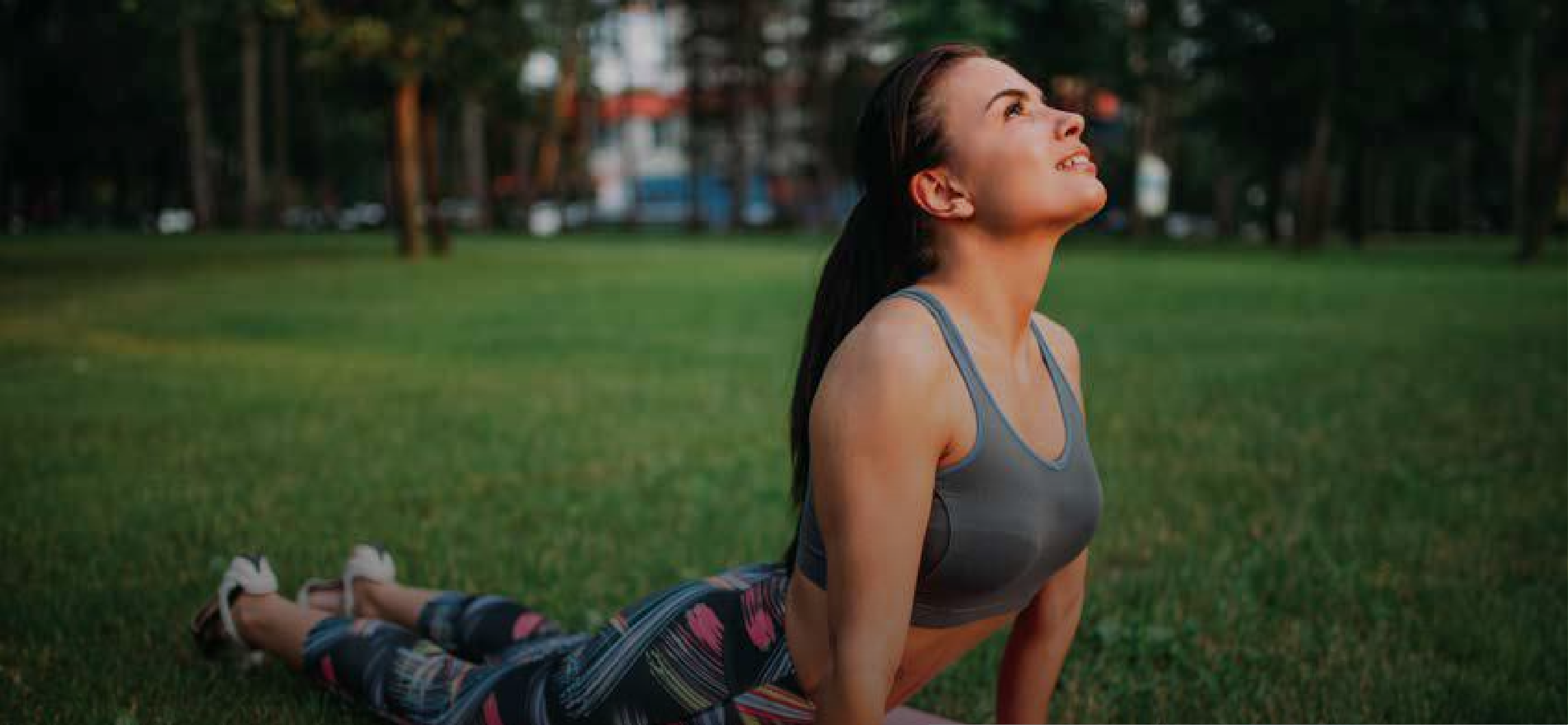




# Indoor Amenities

 <p>PARTY HALL</p>	 <p>CO-WORKING SPACE</p>	 <p>MINI THEATER</p>	 <p>BADMINTON COURT</p>
 <p>TABLE TENNIS ROOM</p>	 <p>BILLIARDS / POOL TABLE</p>	 <p>BOARD GAMES / CARD ROOM</p>	 <p>SQUASH COURT</p>
 <p>GUEST SUITES</p>	 <p>3 HOBBY ROOMS</p>	 <p>CAFÉ WITH INDOOR &amp; OUTDOOR SEATING</p>	 <p>LIBRARY WITH OUTDOOR SEATING</p>
 <p>AEROBICS &amp; YOGA HALL</p>	 <p>CONFERENCE ROOM</p>	 <p>GRAND RECEPTION WITH DOUBLE HEIGHT CEILINGS</p>	 <p>GYM</p>





# Outdoor Amenities



NIRVANA ZONE



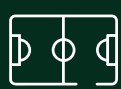
AMPHITHEATER



SWIMMING POOL WITH TODDLER'S POOL



BARBEQUE PAVILION



MULTIPURPOSE FUTSAL COURT



OUTDOOR CHESS



POOL BAR



OUTDOOR GYM



DRIBBLE COURT



HOPSCOTCH



NATURE TRAIL



PET'S PARK



WATER GARDEN



YOGA LAWN



DECK WITH GAZEBO



MEDITATION PAVILION



JOGGING / WALKING TRACK



THERAPEUTIC GARDEN



SUNRISE DECK / LAKE WATCHING ZONE



VISITOR PARKING

# Sustainability

---



## WATER MANAGEMENT

A sophisticated water management system that aids recycling and the sustainable use of rain-water.



## WASTE RECYCLING

A centralized system which is integrated with a sewage treatment plan that effectively converts wet kitchen waste into a nutrient rich compost for enriching garden soil.



## TEMPERATURE REGULATION

Sun-reflecting tiles to maintain a cool indoor temperature.



## SOIL CONSERVATION

The topsoil is repurposed to develop the outdoor landscape and private villa backyards of your homes.



## SOLAR ENERGY

Provision for the usage of solar panels and heaters solves the energy crisis without incurring costs or negatively impacting the environment.



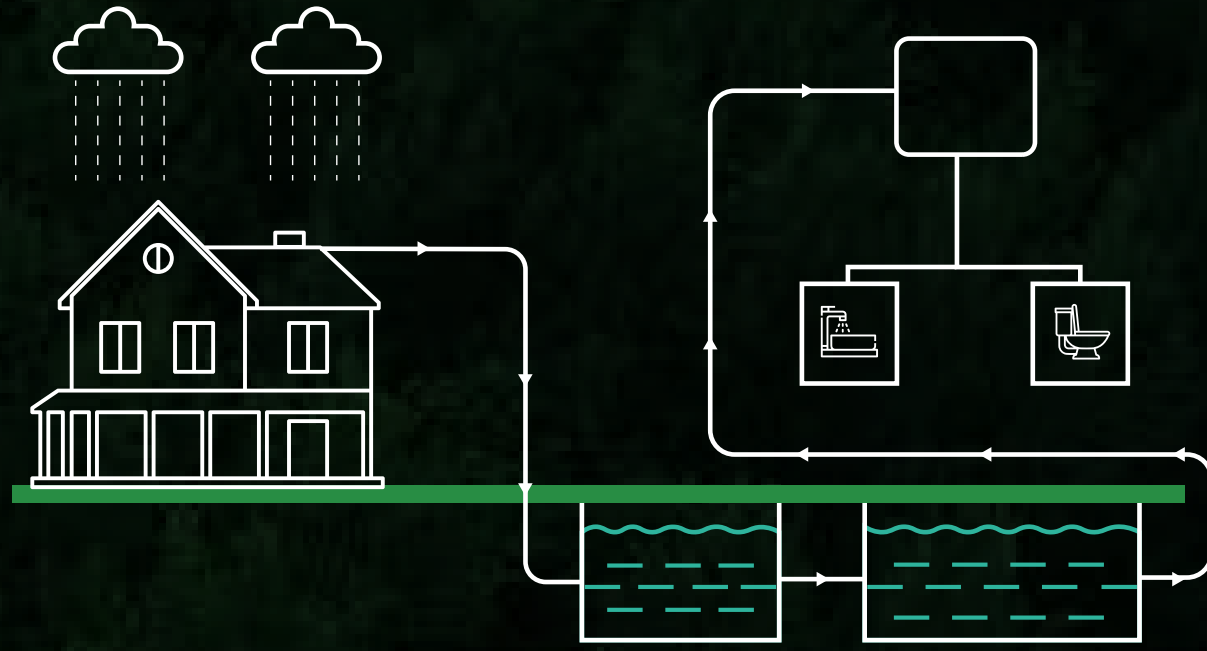
## SUSTAINABLE LIFESTYLE

It's important to ensure that our living spaces are not just beautiful but safe and sustainable. We prioritize the use of safe materials that are non-toxic and free from harmful chemicals.

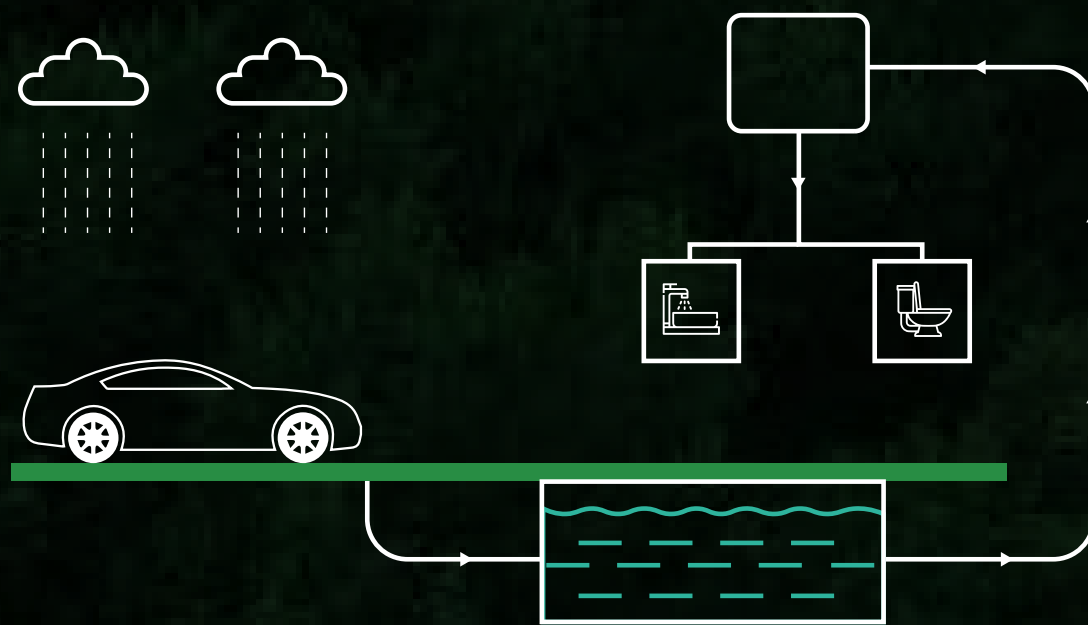
---

# The Water Story

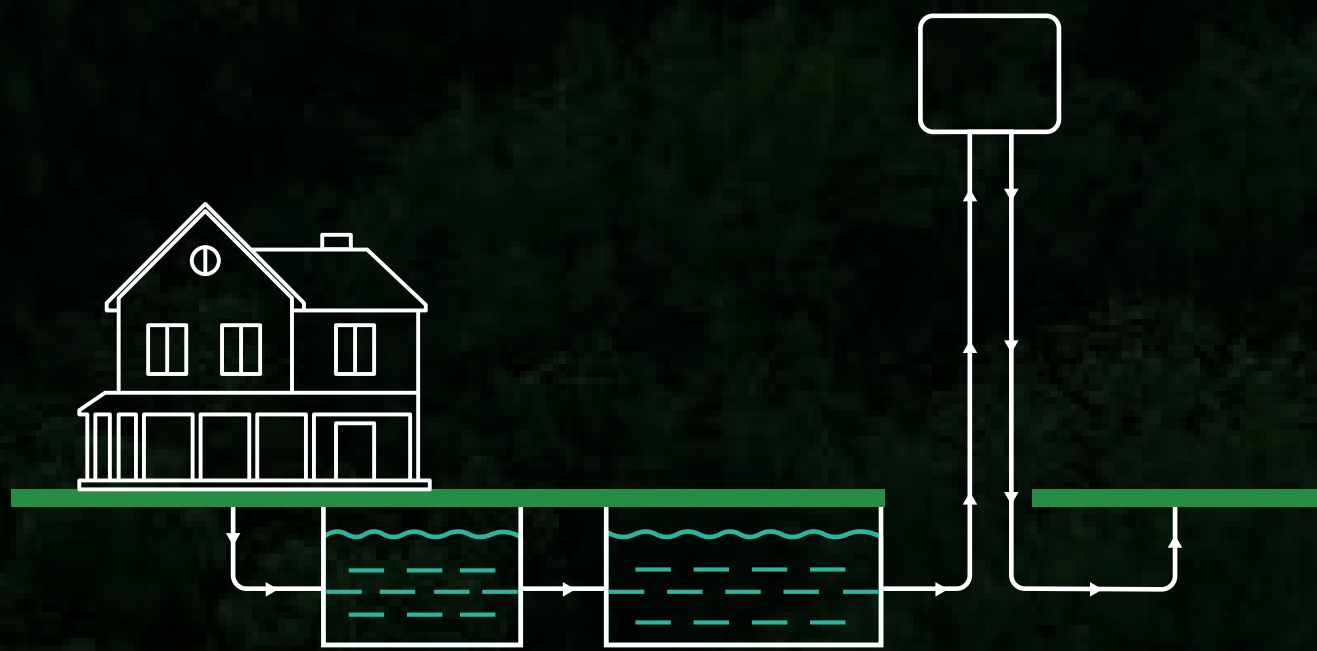
water saving - 1



water saving - 2



water saving - 3



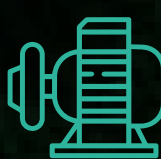
water saving - 4



Water-efficient fixtures  
( taps & showers )



Water-efficient flush tanks



Water-efficient pumping systems  
for uniform pressure

70% water saving



Experience the solace of being home  
in the modern world.

# Floor Plans



TYPE A - 30 X 60 WEST



TYPE B - 30 X 66 WEST



Ground Floor



First Floor



Second Floor



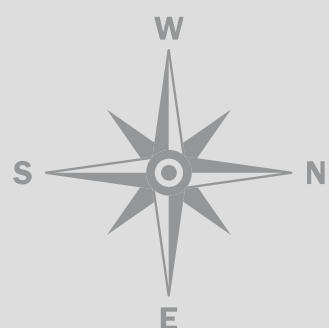
TYPE C - 30 X 66 EAST



First Floor



Ground Floor



Second Floor

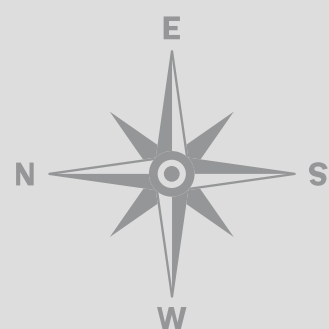


TYPE D - 30 X 56 EAST





TYPE E - 30 X 56 WEST



TYPE F - 35 X 66 EAST



Ground Floor

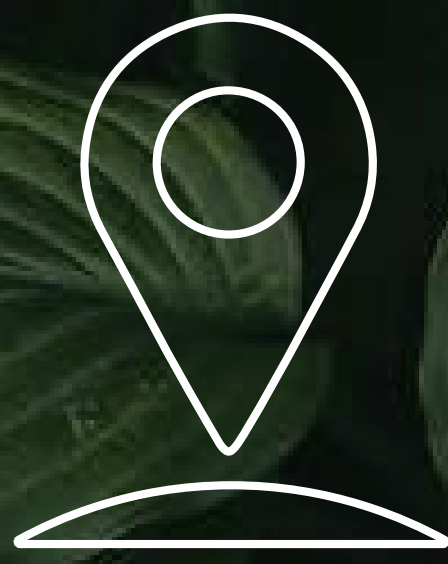


First Floor



Second Floor





Discover a prime social setting  
accessible to lively commercial  
centers and pristine surroundings.

# Location

Sarjapur Attibele Road provides an efficient transportation network which connects Bangalore's crucial employment hubs mainly Electronic City, Outer Ring Road and Whitefield.

The forthcoming Metro P3 and Satellite Town Ring Road (STRR) provides easy access to Whitefield. With major hubs soon to be just a short 15 minute drive away, enjoy everything the city has to offer while being at home.

Evo Aeris is in close proximity to major healthcare facilities such as Narayana Hrudalaya and a plethora of Indian and international schools including Indus, Greenwood High, Inventure and TISB, all situated within a convenient 8 to 10 minutes distance.

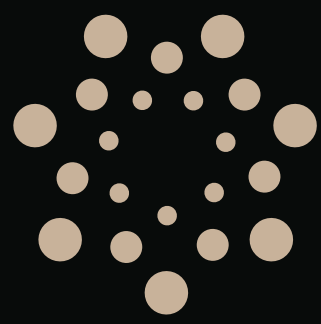
Our community has been designed keeping families in mind. With everything at your fingertips, experience urban convenience in a home where the air is fresh and the landscape is breathtakingly beautiful.

Your dream home awaits you...



A close-up photograph of green corrugated metal, likely a roof or wall, with a dark, almost black background. The metal has a textured surface with some small white and orange spots. The lighting is dramatic, highlighting the ridges and valleys of the corrugation.

*Don't settle for any less..*



# evo homes

---



## Corporate address

EVO NATURA HOMES Ground Floor,  
#2566, Vidam, 13th Cross, 27th Cross,  
HSR Layout, Sector-1,  
Bengaluru-560102.



## Site Address

EVO Aeris Sy No. 13,14/1, 14/2, 16,  
Handenahalli Village,  
Sarjapura, Anekal Taluk,  
Bangalore Urban District,  
Bangalore - 562 125

---



[sales@evohomes.in](mailto:sales@evohomes.in)



+91 91 6458 1777