

Landscape
HERITAGE
Live Life Kingsize

Landscape
HERITAGE
Live Life Kingsize



*When the wings of nature's
beauty take you.....*

A PROJECT BY



LANDSCAPE
INFRASTRUCTURE



Sea Green Developers

Site Address:

Landscape Heritage, Survey no.49/2,
Behind Rangoli Hotel, Opp.
Landscape Garden, Pale Village,
Ambernath (East) - 421501

Corporate Office:

Plot No.516, Sarang Apts, Ground Floor,
Near Shani Mandir, Sai Section,
Ambernath (East) - 421501.
Call: 0251-2602929 / 5959



This Project Landscape Heritage
has been registered via MAHA RERA
REG No.(Phase - 1: P51700015151
and Phase - 2: P51700020548)
and is available on the website
<https://maharera.mahaonline.gov.in>
under registered projects.



Landscape
Heritage
Live Life Kingsize



MAHA RERA REG No.(Phase - 1: P51700015151 and Phase - 2: P51700020548)



PRESENTING, GREEN HOMES
from
LANDSCAPE HERITAGE.



Ever observed, every creature on this Earth builds its home around nature. Be it a nest, a borough or even a den. Whereas humans - God's most wonderful creation - is getting distanced from the nature by each passing day. And it is this thought that formed the basis of our endeavor to build Green Homes for a choicest few like you.

Being amidst nature, here you will be entitled to enjoy nature's every blessing. A beautiful garden spread in large area where you will be greeting fresh and clean air in abundance along with chirping of the sparrows and mesmerizing fragrance of flowers.

There shall be no dearth of space for parking here as we have dedicated a space exclusively for it. The best of amenities, internal and external, for a quality experience, peaceful existence and a heritage living are all decked up in attendance for your welcome here.....



We know buying a home is a complex decision. But believe us, after visiting our site it will get simpler like never before.



COMMUNITY HALL

For a get-together that is as regal as the grand structure.

Celebrate every occasion,
big or small, with family,
friends and well wishers
in a grand way.

No tension of pre-booking,
timing constraints, etc.
because it's all in the family.

CLUB EXOTICA FOR A PREMIUM LIFESTYLE

Inspired by the imperial architecture for a high-class living experience.



EXTERNAL AMENITIES A CLASSIC COLLECTION *for* HERITAGE LIVING



Heritage living is all about grand lifestyle, lavish celebrations and a royal zest towards healthy well-being. And we have everything that will make you vouch for a heritage experience. From a spacious Community Hall with all the facilities to a state-of-the-art Club Exotica for a premium lifestyle, it's all there for you. And for the fitness freaks there is a royal Gymnasium to sweat it out and be in the best of shapes.



GYMNASIUM
State-of-the-art place for the art of staying in shape.



Sweat it out and take care of your body during anytime of the day. No need to travel to far off places amid traffic or pick up an odd timing reluctantly. Just hit it when you feel like doing it.



INTERNAL AMENITIES
COMFORT LIVING
AT ITS REGAL BEST.

Modern living is all about comfort and convenience 24x7. And we have made sure through our range of amenities that you get all that you want and need here at Landscape Heritage. Because we firmly believe the more comfortable you will be, the happier, healthy and at peace you will be.



LANDSCAPE GARDEN

Be one with your self. Be one with the nature.



Nature has a unique way to calm you down, make you feel refreshed and fill you with a positive energy. We value this and our garden area is where you can experience it, be it in the morning or evening or as and when you wish.



~ ~ ~
PARKING
Ample space. Ample peace of mind.
~ ~ ~



At Landscape Heritage, you park your worries outside and your vehicle at a place reserved for you. So remain rest assured about the safety of your vehicle because you are living our promise of heritage living at it best.



AERIAL VIEW
Total safety. Total freedom.



DAY VIEW
Total safety. Total freedom.





THE LUXURY
of
SHOPPING



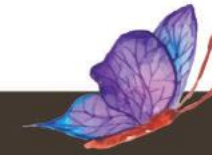
How can your comfortable heritage living experience be complete without a shopping area matching your style and class? The grand ground floor is lined up with stores and boutiques so that you can shop in a relaxed state of mind taking your own sweet time. And if you feel like not stepping out, just dial the restaurant number and enjoy the hot meal indoor.



INTERNAL AMENITIES



Stock images used are for representation purpose only



RCC:
Earthquake resistant RCC structure.

ELEVATION:
Elegant elevation with luxurious feel and appealing architecture.

FLOORING:
Elegant vitrified tiles in complete flat.
Good quality anti-skid tiles in bathroom, flower bed & terrace flooring.

WALL FINISHING:
OBD paint in complete flat.
Decorative ceiling in living rooms.
Semi acrylic paint for external walls.
Gypsum/POP finished internal wall & ceilings.

DOORS:
Decorative main door.
Good quality wooden frames with melamine polish / paint.

WINDOWS:
Elegant French windows with marble/granite sill's.
Color coated aluminum window with mosquito net shutter.

KITCHEN:
Granite kitchen platform with stainless steel sink and service platform.
Good designer quality tiles above platform up to door level.

BATHROOM'S:
Jaguar / Equivalent C. P. fitting Concealed CPVC pipes.
All bathrooms beautifully designed with premium designer good quality tiles to door level.
Elegant bathrooms having wash-basins with granite/marble counter.
Provision of Sintex tank connection in common bathrooms.

ELECTRICALS:
Well planned concealed electrical point with branded/ISI quality wiring.
AC point in each room.
TV points in entire flat.
Fans and tube lights in entire flats.
Distribution board with ELCB & Circuit breaker
Branded modular switches.

SECURITY:
Security Cabin.
Firefighting system.
CCTV on ground level.



Stock images used are for representation purpose only



- G + 12 Storied residential and commercial project
- 1 BHK and 2 BHK flats in prime location
- Designer entrance lobby
- Branded elevators in each wing
- Community hall with party lawn
- Generator / inverter back up for lobby lift & stairs
- Fully equipped gymnasium
- Grand entrance gate
- Watchman cabin at entrance
- Firefighting system
- Attractive elevation
- Indoor games room (Pool Table, Carrom, Chess)
- Children's Play Area
- Jogging Track
- Landscape lawn



EXTERNAL AMENITIES



Landscape
Heritage

D Mart
PROPOSED D MART

THE ADDRESS
of
CLASS & COMFORT

It's not just the amenities but also the location that makes Landscape Heritage a landmark of the town. It's well connected, easily approachable and surrounded by nature.



Source Google Maps. Not to Scale.

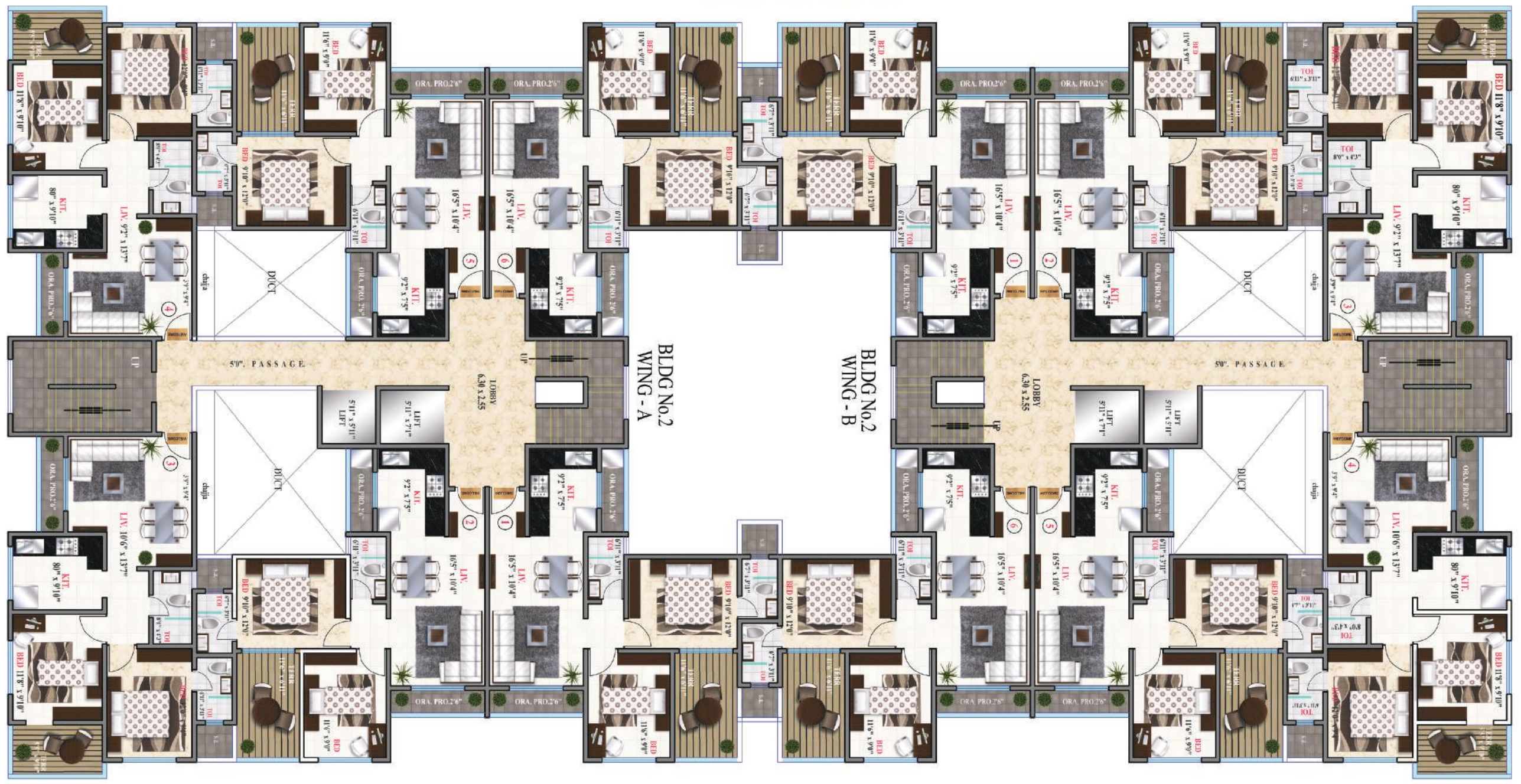


DP ROAD

FLOOR PLAN

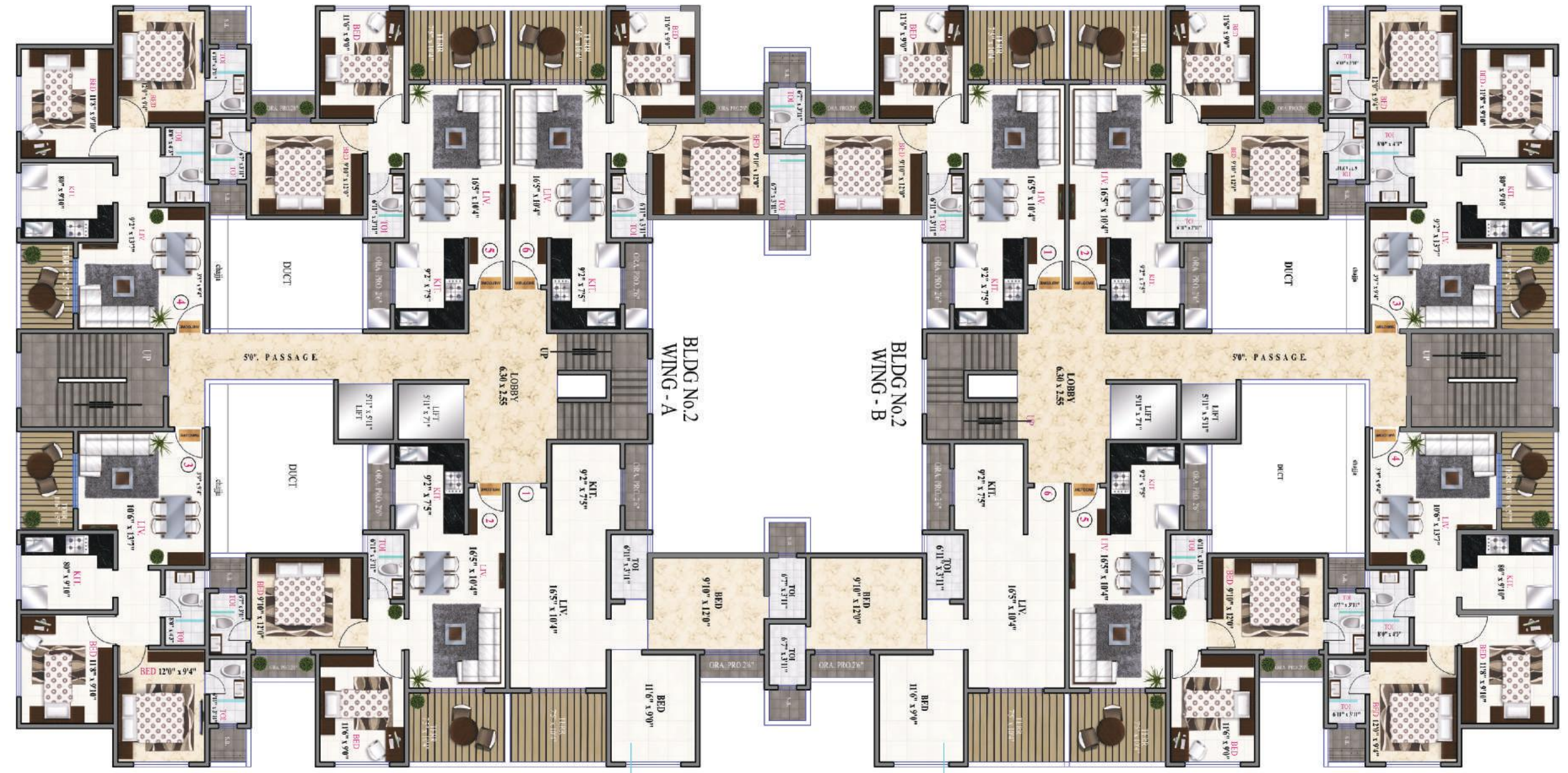
2nd, 4th, 6th, 8th, 10th, 12th,

CLUB HOUSE FACING





CLUB HOUSE FACING



BLDG No.2
WING - A

BLDG No.2
WING - B

FLOOR PLAN
3rd, 5th, 7th, 9th, & 11th

REFUGUE AREA @ 7TH FLR.