

Reach to the new level of happiness with
Badlapur's First Sky Lifestyle Residences


JEWEL HEIGHTS
BADLAPUR (WEST)




JEWEL
BUILDERS
A SIGNATURE OF TRUST
ISO 9001:2008

Site Address: Plot No 2 of Cut No 25, Hissa No 1A, 1B, 2 and 3, Cut No 67, Hissa No 3 PT A, 3 PT B and 4 at Sonivali Village, Badlapur West, Thane - 421 503.

Corporate Office: Shop No. 1, Pushpak Apartment, Jai Matadi Nagar, Opp. Shalimar CHS, Gol Maidan Chopra Road, Ulhasnagar - 421003. | Call.: 92092 00444 | www.jewelbuilders.in

thoughttrains

To reach out
to your dreams
is to believe



To reach out to
your aspirations
is to progress



To reach out to
your achievements
is to celebrate



To reach out to the sky
is what we believe in

Presenting



JEWEL HEIGHTS

Badlapur's First
Sky Lifestyle Residences

Project Highlights

- 3 Towers of 12 Storeys 1 Proposed Upcoming Tower
- 1 & 2 BHK Luxurious Apartments
- Luxurious Sky Lifestyle Features
- Themed Gardens for Children and Senior Citizens
- State-of-the-art Clubhouse with Gymnasium, Library & Crèche
- Proposed Supermarket in vicinity
- Ganesh Mandir within the society premises
- Located in the peaceful environs of Badlapur



Artist's Impression

Badlapur (W)

Reach out to an arena with the best of everything

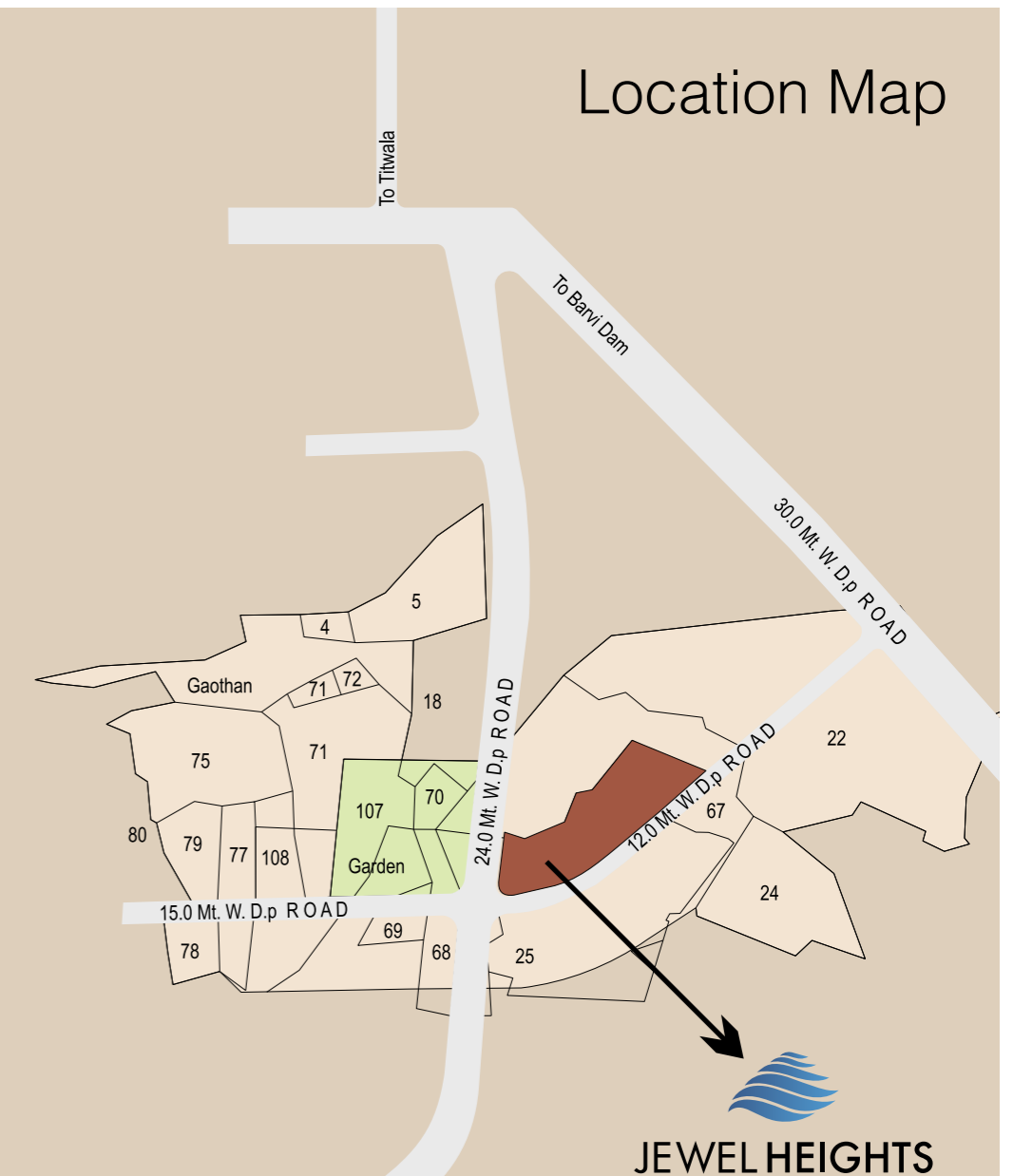
Located at a welcoming environment of Badlapur, 'JEWEL HEIGHTS' is an incredible place set amidst a tranquil surrounding and scenic beauty. From educational institutions to hotels and from shopping malls to temples everything is in the nearby vicinity. While some look at it as just another place to reside. We look at it, as an address to adorn.

Location advantages

- Only 5 minutes' drive from Badlapur Railway Station
- 45 minutes' drive to the Proposed International Airport
- Scenic Picnic Points like Neral, Matheran Hill Station and Barvi Dam in the vicinity
- Conveniently located on the 24 mtr. DP Road
- Excellent connectivity to Mumbai, Navi Mumbai, Pune & Nashik

Day-to-day conveniences

- Proposed Municipal Garden in Vicinity
- Schools & Colleges Nearby
- Close to Market
- Well-known Hospitals & Medical Centers in Proximity



Excellent connectivity to Mumbai, Navi Mumbai, Pune & Nashik



5 minutes' drive from Badlapur Railway Station



Nearby School & College



Hospitals & Medical Centers in Proximity

Reach out to
a life that makes it
worth living

Sky Life Recreation & Health Features

Artist's Impression

A rooftop lifestyle designed for the evolved indulgences



Reach out to new levels of luxury in style



Acupressure Walkway



Meditation Area



Party Lawn

Reach out to a lifestyle that serves luxury with comfort

Ready Clubhouse with Lifestyle facilities



ACTUAL PHOTOGRAPH



Children's Swimming Pool



Indoor Games Room



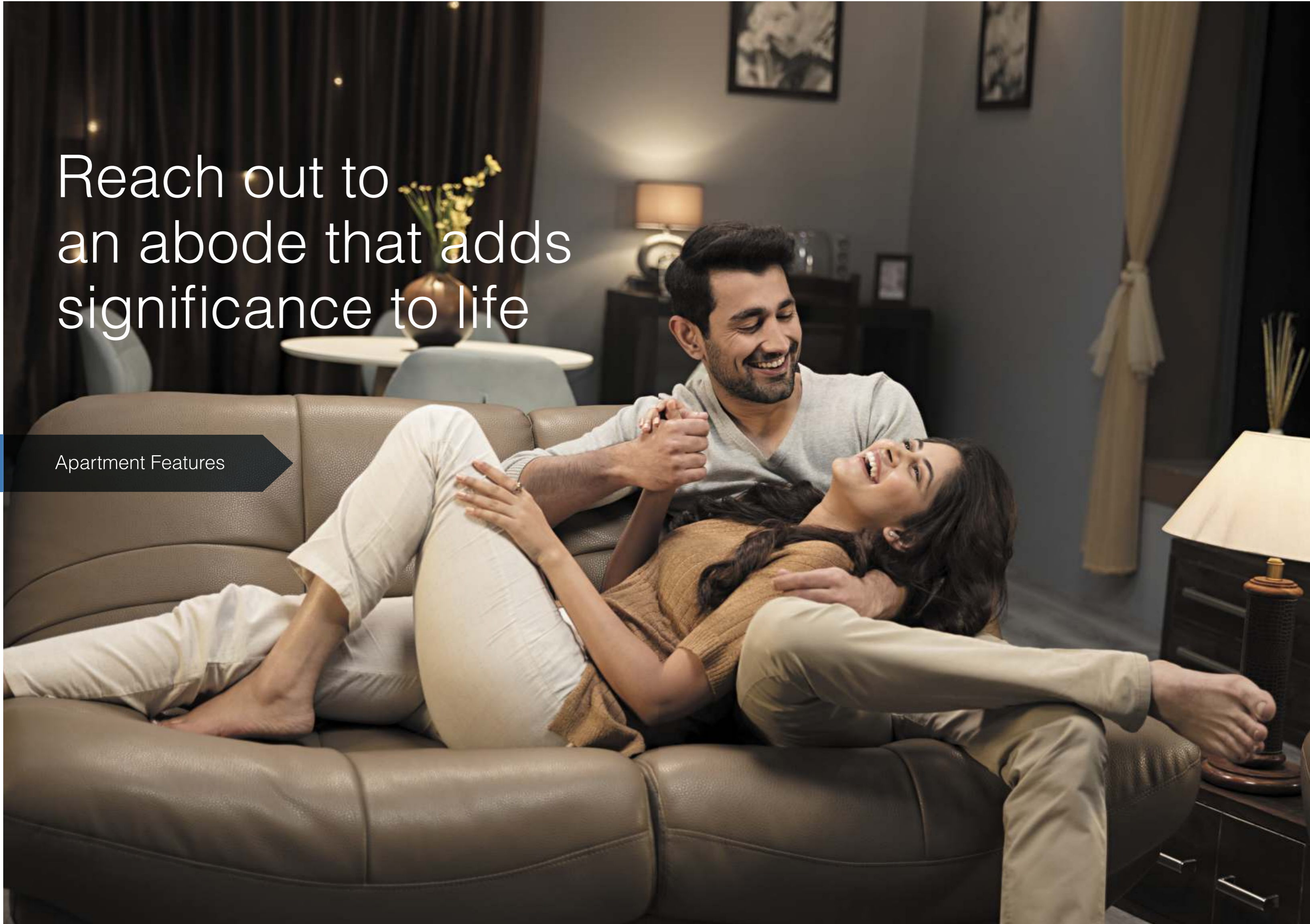
Well-equipped Gymnasium



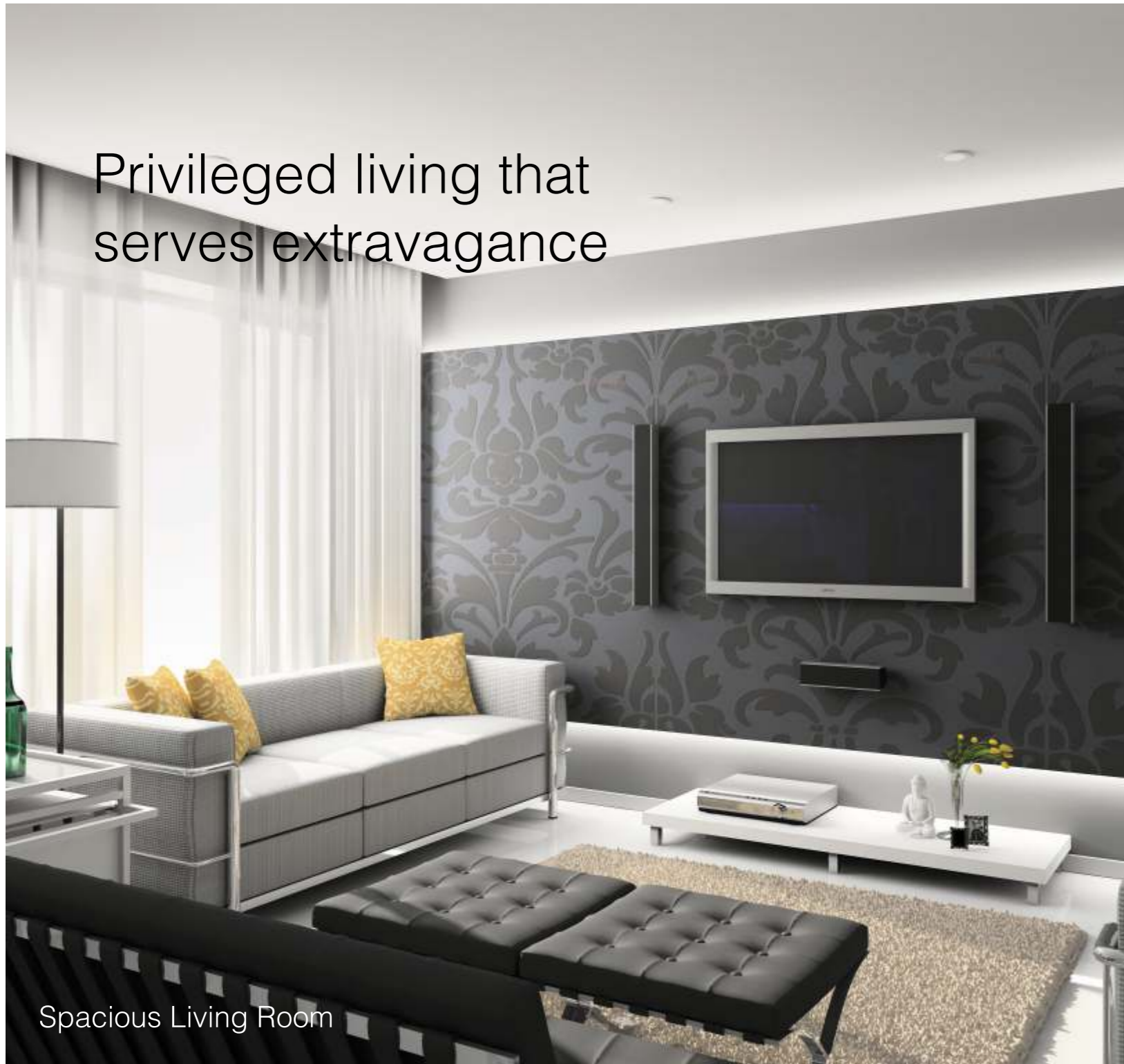
Themed Garden for Children

Reach out to
an abode that adds
significance to life

Apartment Features



Privileged living that serves extravagance



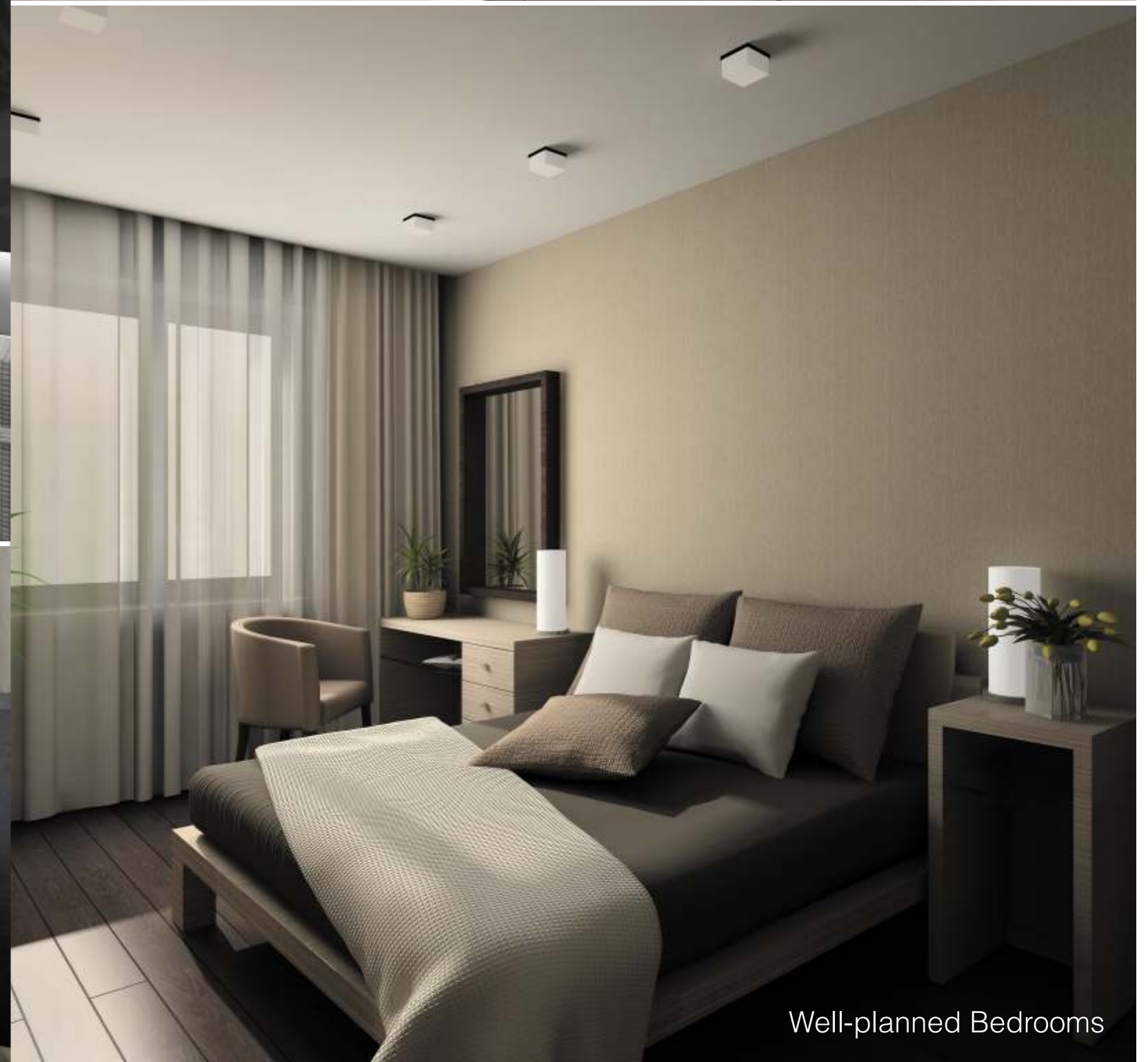
Spacious Living Room



Compact Bathrooms



Modular Kitchen Layout



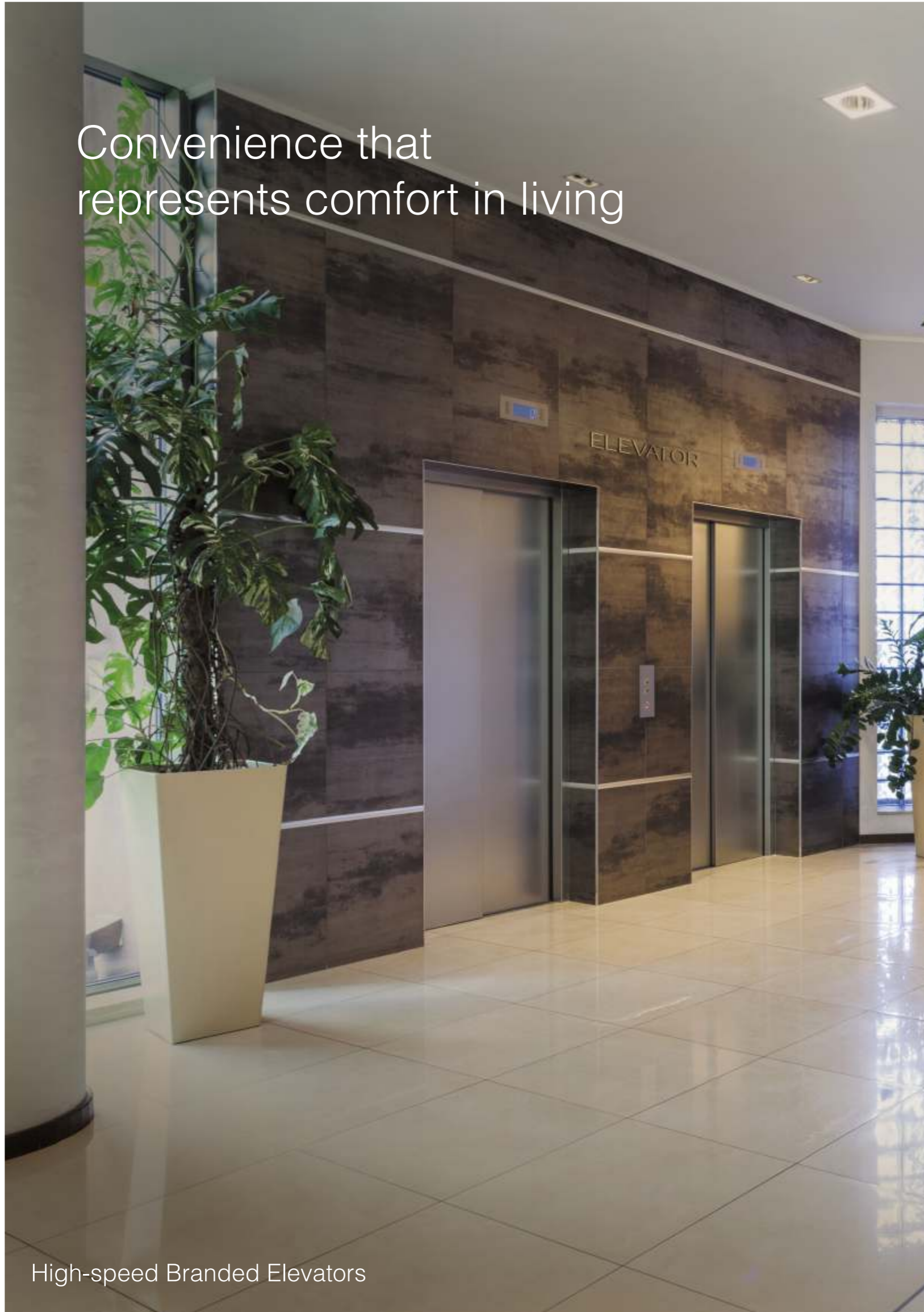
Well-planned Bedrooms

Reach out to
excellence that is
welcoming in nature

Tower Features

Grand Entrance Lobby

Convenience that represents comfort in living



High-speed Branded Elevators



Ample Shelter and Open Parking Space



24X7 Security & Surveillance



Project at a glance

Project Highlights

- 3 Towers of 12 Storeys 1 Proposed Upcoming Tower
- 1 & 2 BHK Luxurious Apartments
- Luxurious Sky Lifestyle Features
- Themed Gardens for Children and Senior Citizens
- State-of-the-art Clubhouse with Gymnasium, Library & Crèche
- Located in the peaceful environs of Badlapur

Location advantages

- 5 minutes' drive from Badlapur Railway Station
- 45 minutes' drive to the Proposed International Airport
- Scenic picnic points like Neral, Matheran hill station and Barvi dam in the vicinity
- Conveniently located on the 24 mtr. DP Road
- Excellent connectivity to Mumbai, Navi Mumbai, Pune & Nashik

Flooring

- Vitrified flooring in all rooms

Kitchen

- Granite Kitchen Platform
- Stainless Steel Sink
- Door Height Ceramic Glazed Tiles

Toilets & Bathrooms

- Anti-skid Tiles in bathroom
- Door Height Ceramic Glazed Tiles
- Branded Sanitaryware
- Hot & Cold Water Mixer Fittings
- Concealed Plumbing with Branded C.P. Fittings

Doors & Windows

- Waterproof Flush Doors in bathroom and toilets
- Aluminium Windows with Marble Sills
- Main Door with Decorative Laminate
- Marble Framed Waterproof Flush Doors in bathrooms & toilets
- Elegant French Windows with Marble Window Sill

Walls & Paints

- Well-furnished Internal Walls with Distemper Paint
- Furnished Exterior Surface with Acrylic Paint

Electrification

- Concealed Copper Wiring with Modular Switches & Adequate Points
- Concealed Cabling for Television, Telephone & Intercom



Committed to Excellence

Ever since the beginning in 1985, we, at Jewel Builders are driven by the belief that trust and magnificence go hand-in-hand. And with each passing day, for the past 33 years, we have upgraded our standards by bringing trust, innovation, class and commitment to all our projects. In our unvarying quest for excellence, today we have reached greater heights with our presence in the prime locations of Ulhasnagar, Badlapur and Kharghar, to name a few.

Here, reliability and quality; not only differentiate us from others, but also personifies our dynamism. More than 2 decades and 25 projects later, the values that built Jewel Builders remain unfazed. Today, the group is focused towards building newer and bigger projects that become benchmarks of excellence. Indeed, we have achieved a name for everything that is magnificent!

Our Completed Projects

Jewel Ekvira (Khargahar)



Sapphire Paras Residency (Ulhasnagar)



Jewel Paras Residency (Ulhasnagar)



Emerald Paras Residency (Ulhasnagar)

Our Ongoing Projects in Central Mumbai



JEWEL
BUILDERS
A SIGNATURE OF TRUST
ISO 9001:2008

JEWEL HEAVEN (NERAL)



JEWEL VISTA (BADLAPUR)



Artist's Impression

Our recently delivered
Residential landmark



JEWELARISTA
BADLAPUR





JEWEL
BUILDERS
A SIGNATURE OF TRUST
ISO 9001:2008

Perfectly Planned Life

FLOOR PLANS

