



KEY DISTANCES

- ◆ Wakad Phata - 5 km, approx
- ◆ Bhumkar Chowk - 3.5 km, approx
- ◆ Wakad Bus Stand - 3 km, approx
- ◆ Akurdi Railway Station - 4 km, approx
- ◆ Express way - 3 km, approx
- ◆ Pune Railway Station - 22 km, approx



2 & 3 BHK EXOTIC HOMES
PUNAWALE
PHASE - II

ULTRA MODERN RESIDENCES



EDUCATIONAL HUBS

- ◆ Akshara International School
- ◆ Balaji Institutes of Modern Management
- ◆ Blossom Public School
- ◆ Indira Global Business School & College
- ◆ J.S.P.M. Institutes
- ◆ Lotus Business School
- ◆ Padmashree Dr. D.Y.Patil Institutes of Engineering, Management & Research

HOSPITALS

- ◆ Aditya Birla Hospital
- ◆ Cantonment Hospital, Dehuroad
- ◆ Life Point Hospital
- ◆ Lokmanya Hospital
- ◆ Niramaya Hospital
- ◆ Ojas Multispeciality Hospital

RETAIL

- ◆ Big Bazaar / D - Mart

HOTELS & RESTAURANTS

- ◆ Ginger
- ◆ Sayaji
- ◆ Ramada
- ◆ Sentosa Water Resort
- ◆ VITS/ Orchid
- ◆ Punjabi Rasoi

BANKS & ATM

- ◆ Bank of Maharashtra
- ◆ IDBI BANK
- ◆ State Bank of India

BUS STOP & RAILWAY STATION

- ◆ Akurdi Railway Station
- ◆ Koyte Wasti Bus Stop
- ◆ Kiwale Bus Stop

RERA NO.: P52100020135



Member of : Pethkar Projects, 'SIYONA', S. No. 47(P), 48(P) & 50(P), Punawale, On Mumbai-Bengaluru

Highway, Near Bharat Petrol Pump, PCMC, Pune - 411033, Call : 97649 95555

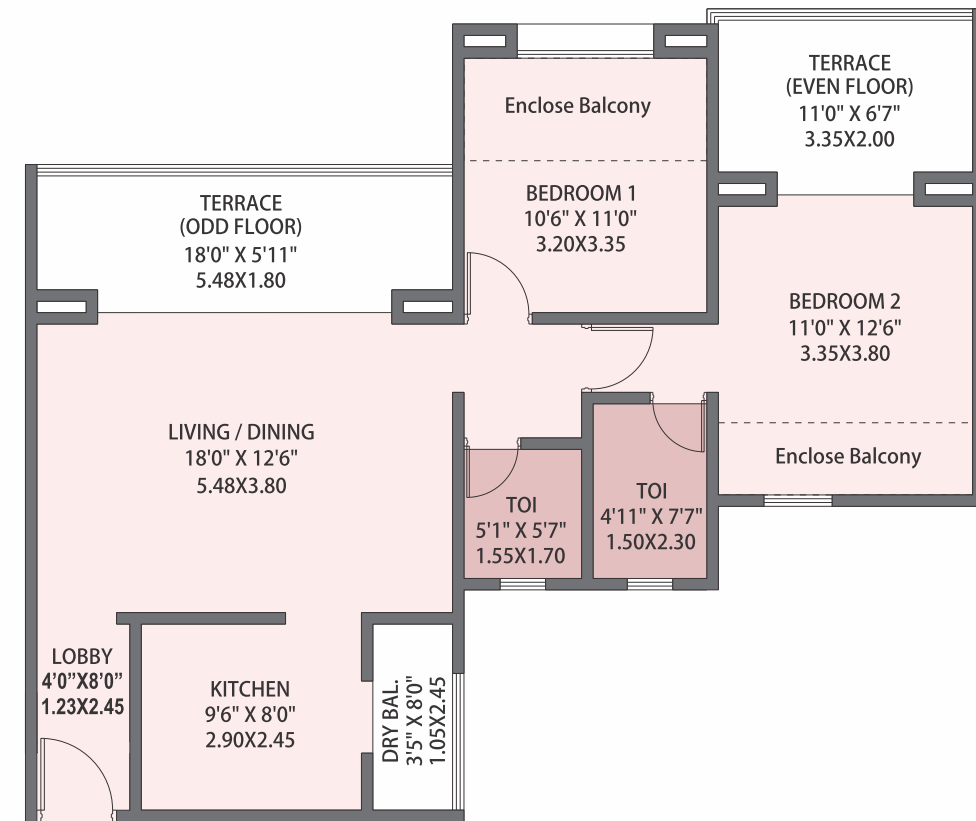
mail@pethkarprojects.com | www.pethkarprojects.com | www.pethkarsiyona.in

The contents of this brochure are purely conceptual and the images are artists impression and have no legal binding on the developer. The developer reserves the right to amend the same without prior notice.



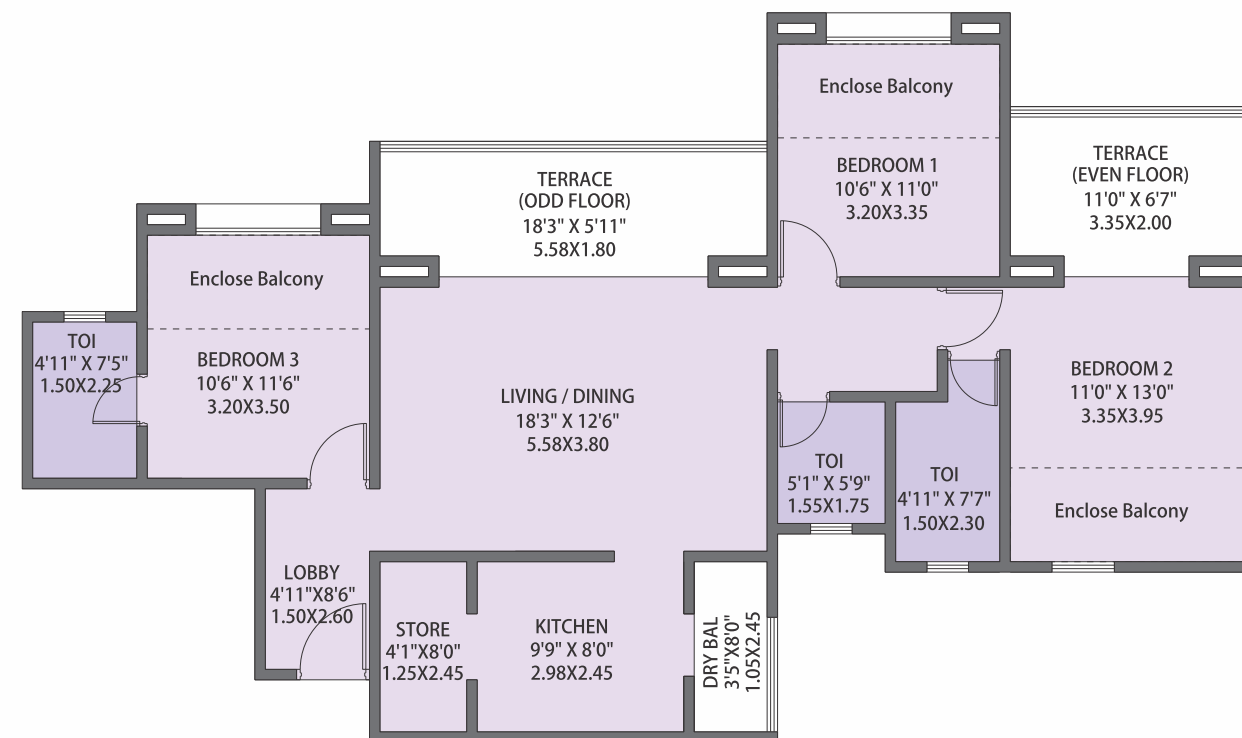
RERA NO.: P52100020135

2 BHK Odd / Even Floor Plans (areas 840 - 880 Sqft Carpet)



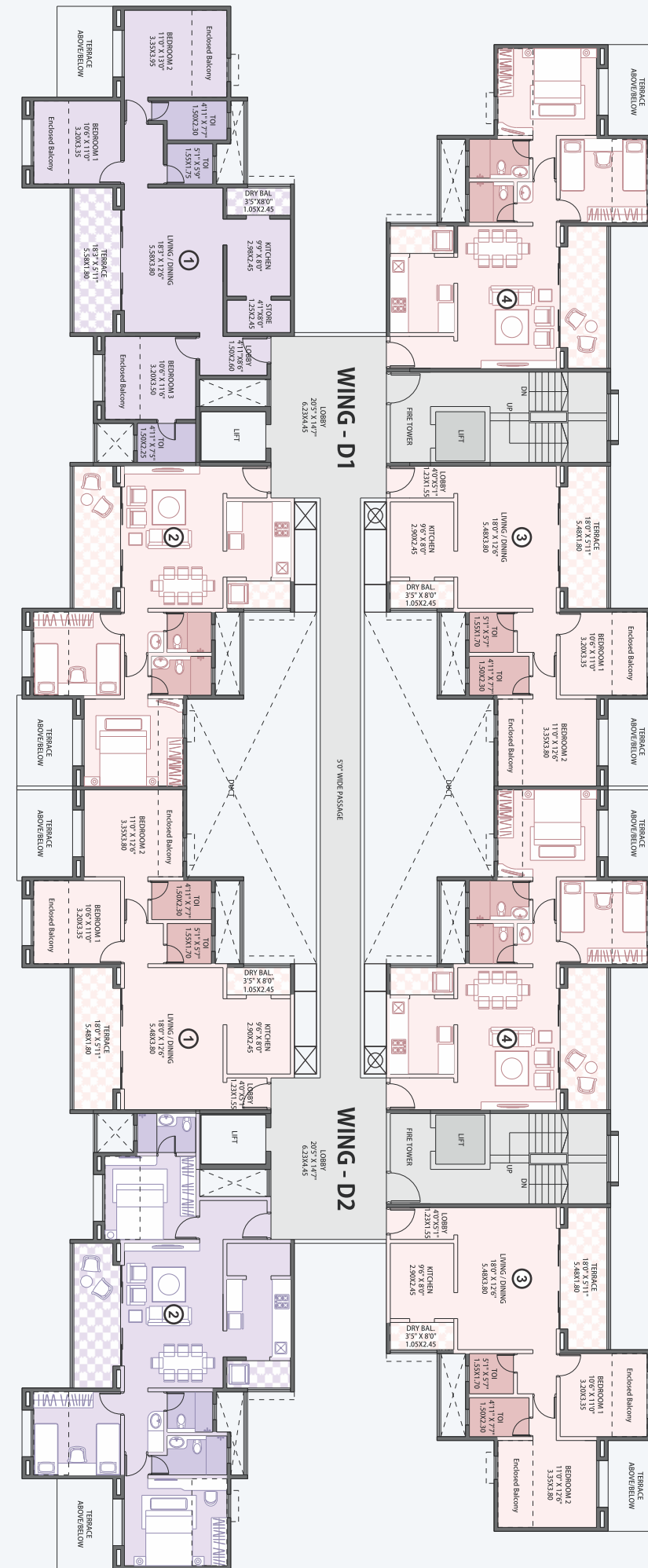
All Dimensions are from Unfinished to Unfinished

3 BHK Odd / Even Floor Plans (areas 1090 - 1120 Sqft Carpet)

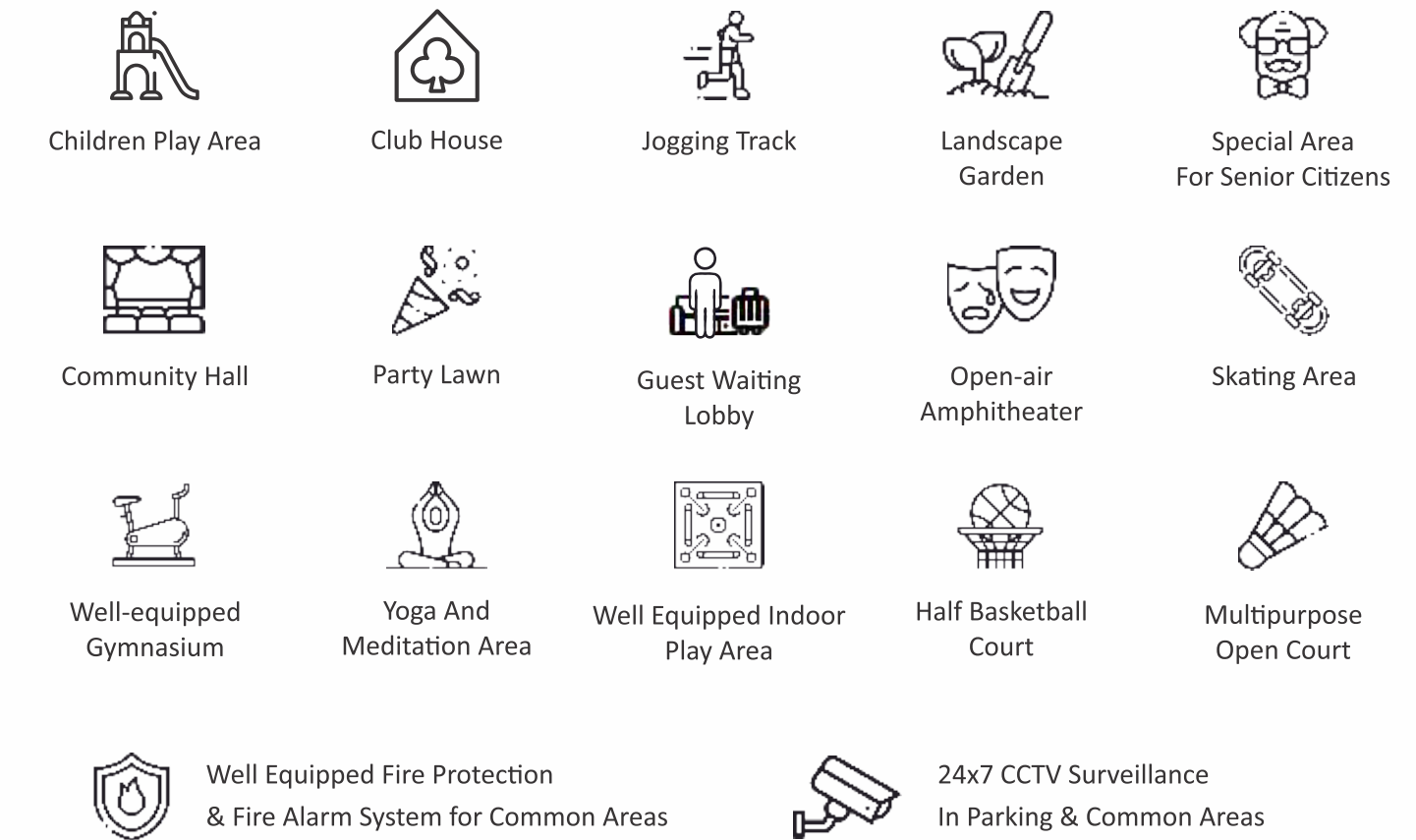


All Dimensions are from Unfinished to Unfinished

WING - D1 | D2 (BUILDING 'D')



AMENITIES



SPECIFICATIONS

- ◆ AC points in all bedrooms
- ◆ Aluminum powder coated sliding windows with safety grills
- ◆ Anti-Skid flooring at terrace and toilets
- ◆ Concealed plumbing and wiring with quality fittings
- ◆ Dado tiles upto false ceiling in all toilets
- ◆ Generator back up for the lighting load all over the flat
- ◆ Intercom facility in each flat
- ◆ Main door with standard latch fittings
- ◆ Mosquito net for all windows and glass doors
- ◆ Parallel kitchen platform with stands
- ◆ Solar hot water for bathing in each toilet
- ◆ SS railing with toughened glass for terrace
- ◆ Telephone points in all bedrooms and living room
- ◆ Total vitrified flooring all over the flat
- ◆ TV points in living room, master bedroom
- ◆ Video Door Phone with bell
- ◆ Wall hung European water closet (commode) in all toilets