



BOOMERANG
HIGHER BUSINESS RETURNS
ANDHERI



IN TODAY'S INCREASINGLY HI-TECH WORLD,

BUSINESS NEEDS TO KEEP PACE IN ORDER TO SURVIVE,

LET ALONE SUCCEED. AND SUCCESS HAPPENS ONLY WHEN

YOUR BUSINESS ENVIRONMENT IS DESIGNED FOR IT.

LIKE BOOMERANG, A ONE OF ITS KIND BUSINESS DESTINATION

THAT SETS BENCHMARKS, BE IT IN DESIGN OR FUNCTIONALITY.

IT'S UNIQUE AND AS WORLD CLASS AS IT GETS.

ADHERING TO THE NEW AGE MANTRA OF PERFECT ENVIRONMENT,

BOOMERANG IS DESIGNED TAKING INTO ASPECT

THE MINUSCULE DETAILS THAT PROMISE THE REALIZATION

OF GREAT BUSINESS VISIONS.





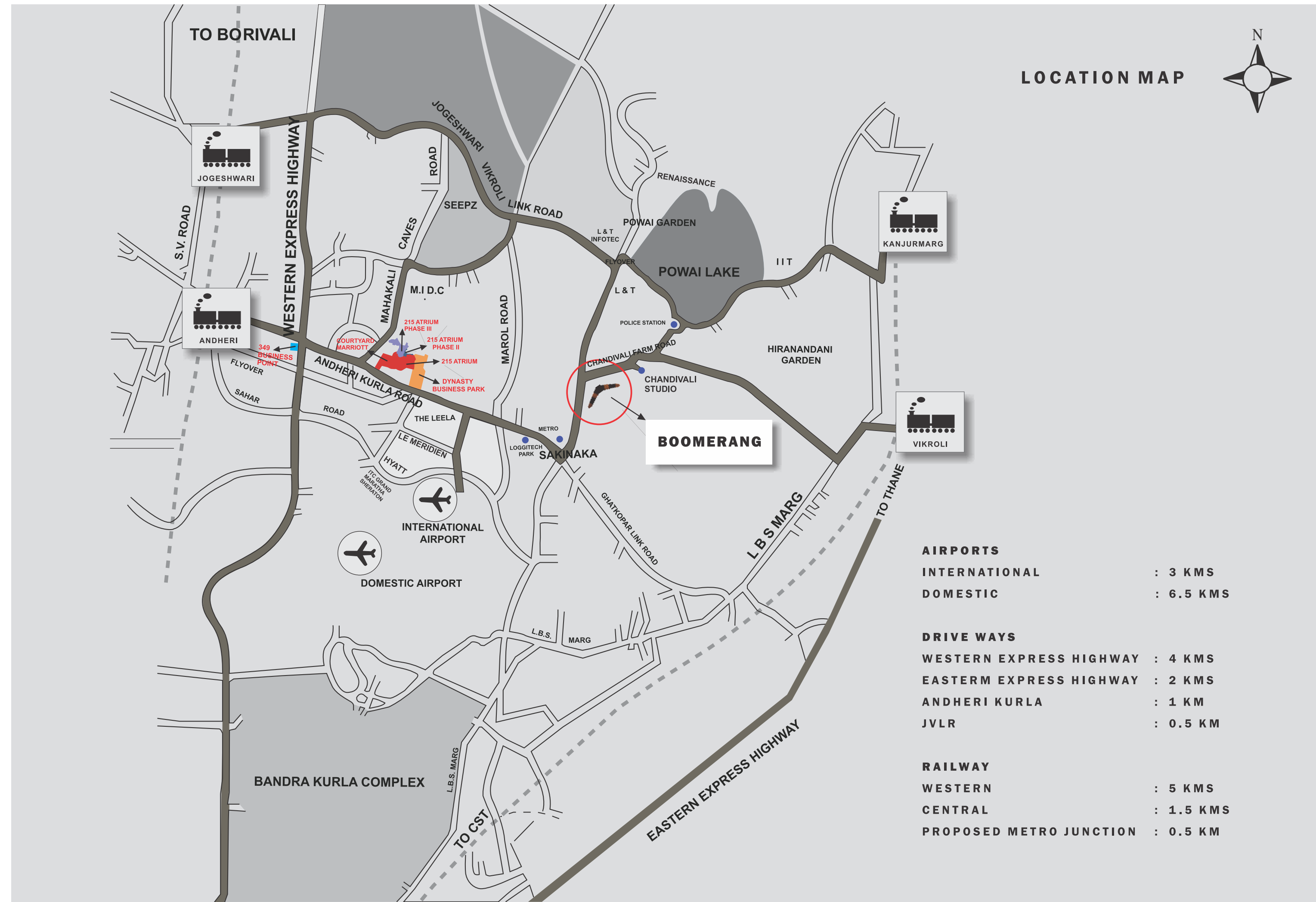
THE DESIGN: UNIQUE
THE LOCATION: STRATEGIC



MODELED AROUND THE NATIVE AUSTRALIAN HUNTING CONTRIVANCE, BOOMERANG IS A STRUCTURE THAT IS BUILT, LIKE ITS PARADIGM, TO USE THE ENERGY IN, SURROUNDING TO DRAW ITS OWN. BOOMERANG IS SET TO BECOME THE MOST COVETED CORONET OF ALL COMMERCIAL PROPERTIES IN THE CITY, AND WITH GOOD REASON. A ONE OF ITS KIND PROJECT, THE STRUCTURE DELIVERS POWER SAVING AND EFFICIENCY, MEGA STRUCTURAL SPACE, AND MANY CLASSIC FACILITIES :

- COMMERCIAL HUB OF 1.2 MILLION SQ. FT
- STRUCTURE OF 2 BASEMENT + GROUND + 8 UPPER FLOORS
- LARGEST SINGLE FLOOR PLATE IN MUMBAI - 160,000 SQ. FT. (APPROX)
- LARGE AND FLEXIBLE SPACE, BE IT A SINGLE FLOOR OR AN INDEPENDENT WING
- DESIGNED FOR EFFICIENT ENERGY AND MANPOWER OPTIMIZATION

BUSINESS NEEDS A PLACE THAT'S EASILY ACCESSIBLE. THE FAST EXPANDING, WILDLY PROGRESSIVE AND MOST OPEN CITY ON THE GLOSSY GLOBE, MUMBAI IS A CITY WITH AN AMBITION. BOOMERANG IS LOCATED RIGHT IN THE HEART OF THE THROBBING CITY, ANDHERI - THE SUBURB WITH THE STRONGEST Foothold OF ECONOMY, NEW AGE DEVELOPMENT AND SUPERIOR NETWORKS. A MAJOR COMMERCIAL HUB WITH PROXIMITY TO THE INTERNATIONAL AND DOMESTIC AIRPORTS.



BOOMERANG

ARTIFICIAL DESCRIPTION, SUBJECT TO CHANGE





**THE INTERIORS: STUNNING
THE SURROUNDINGS: BREATHTAKING**



ONE LOOK AT BOOMERANG'S
BREATHTAKING MAGNIFICENT
EDIFICE AND YOU REALIZE
THAT IT IS A BUSINESS DESTINATION
LIKE NO OTHER.
ADD TO THAT THE BEAUTIFULLY
LANDSCAPED GARDENS,
SOOTHING WATER BODIES,
MESMERIZING SCULPTURES AND
YOU ARE SURE THAT WORKING HERE
IS GOING TO BE A PLEASURE.
INCIDENTALLY, THE GREENERY HERE
IS SOMETHING YOU'LL EXPERIENCE
THROUGHOUT THE YEAR.
DON'T BE SURPRISED IF YOU FIND
PRODUCTIVITY INCREASING TO NEVER
BEFORE LEVELS.



BOOMERANG



**THE INFRASTRUCTURE: HI-TECH
THE FACILITIES: WORLD-CLASS**



- AT BOOMERANG THE IDEA IS TO MAKE WORK SEEM EFFORTLESS, SO EXPECT THE KIND OF AMENITIES & FACILITIES YOU'LL ONLY FIND AT INTERNATIONAL BUSINESS HUBS. TO MENTION JUST A FEW :
- 40 FT. HIGH GRAND ENTRANCE LOBBY WITH ELEGANT LOUNGE AND RECEPTION DESK.
 - 240 METERS FRONTAGE ON THE CHANDIVALI FARM ROAD
 - HI-SPEED PASSENGER AND SERVICE ELEVATORS
 - DOUBLE BASEMENT PARKING WITH A CAR PARK RATIO OF 1 : 1000
 - 13 FEET SLAB-TO-SLAB HEIGHT AND 8.5 METER COLUMN GRID
 - 0.5 TON/SQ.METER FLOOR LIVE LOAD
 - WARM SHELL WITH HVAC SYSTEMS
 - DG BACKUP
 - IBMS
 - FIRE ALARM SYSTEMS
 - CONCIERGE SERVICES – BUSINESS CENTRE AND CONFERENCE ROOM
 - EATERIES – FINE DINING AND FOOD COURT
 - COMMUNICATION AT FINGER TIPS, WITH INTRANET
 - CLUB HOUSE WITH HI-TECH GYMNASIUM AND FITNESS CENTRE
 - SEPARATE ENTRANCE FOR CORPORATE AND COMMERCIAL VEHICLES

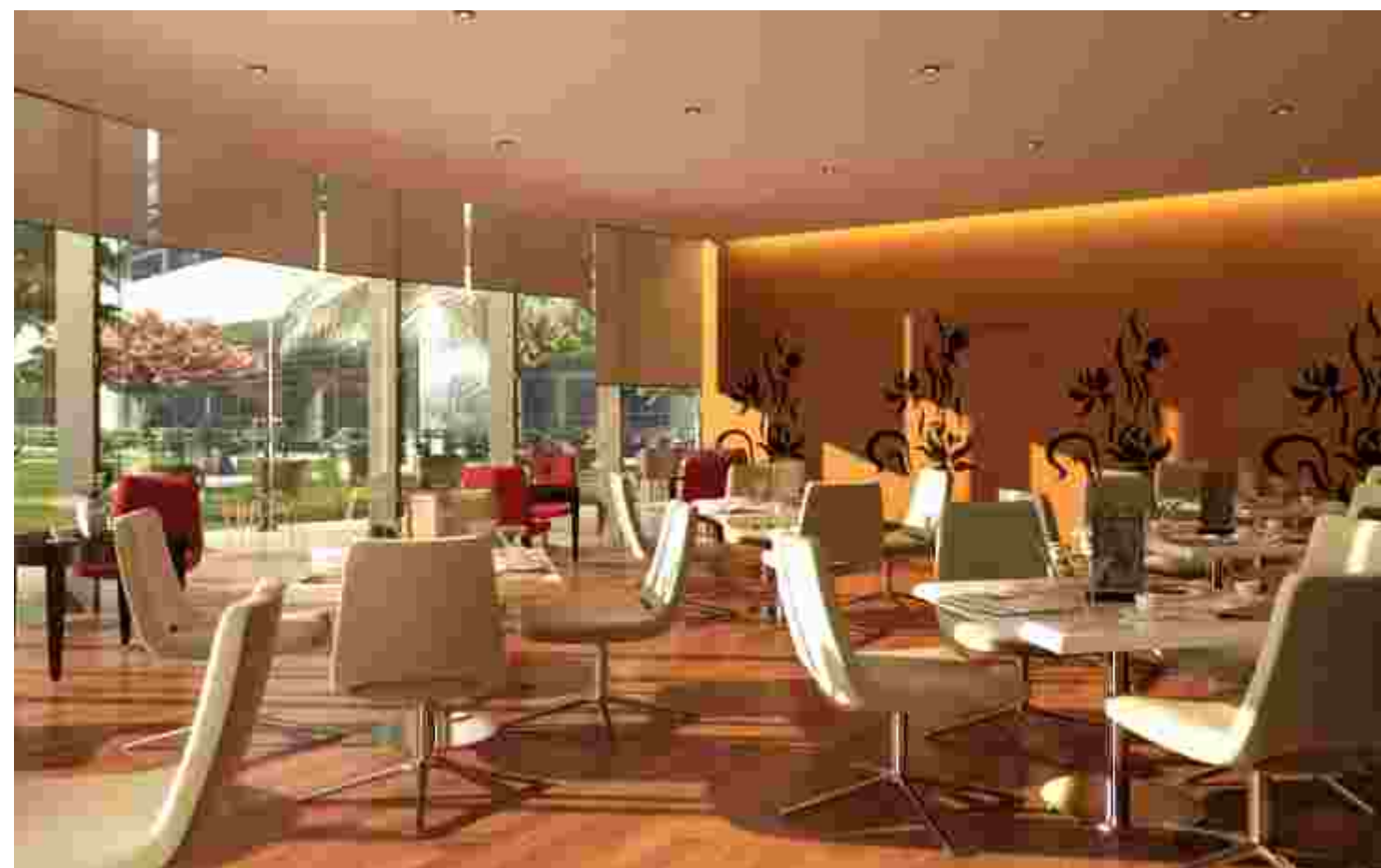
THE FACILITIES:
WORLD-CLASS



HI-TECH GYMNASIUM



CONFERENCE ROOM



CLUBHOUSE WITH CAFETERIA



ARTIFICIAL DESCRIPTION, SUBJECT TO CHANGE



THE BUILDING: GREEN RATED



EVERY BRICK LAID BY KANAKIA BEARS EVIDENCE OF ITS COMMITMENT TO PRESERVE AND NURTURE THE EARTH THAT GAVE IT ALL. DESIGNED TO USE NATURAL ENERGY RESOURCES EFFICIENTLY ON NATURAL HEATING AND COOLING SYSTEMS, HERE IS AN OFFERING FROM US TO THE PLANET :

- SPECIALLY DESIGNED HIGH PERFORMANCE GLASS FACADE, SETS IN MORE DAYLIGHT REDUCING POWER CONSUMPTION
- GREEN BUILDING CERTIFIED BY LEED
- POWER CONSERVATION, ENERGY EFFICIENT AND ECO FRIENDLY
- SEWERAGE WATER TREATMENT PLANT, RECYCLED WATER IN CHILLERS AND COOLING TOWERS
- RAIN WATER HARVESTING
- HIGH PERFORMANCE ADVANCED AIR CONDITIONING TECHNOLOGY



ENTRANCE LOBBY



CORPORATE HUB : HIGH PROFILE



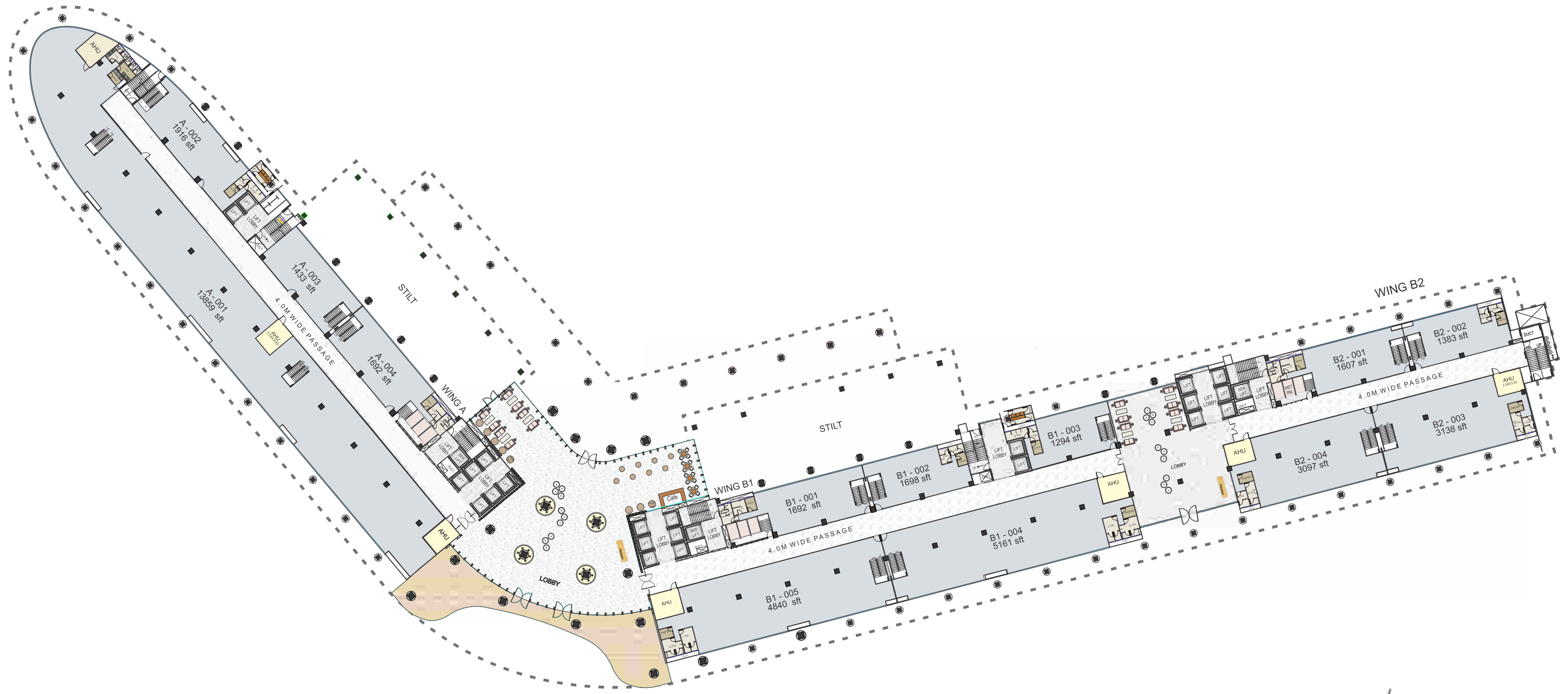
"YOU ARE THE COMPANY YOU KEEP" GOES THE OLD SAYING. THAT GOES FOR NOT JUST INDIVIDUALS BUT FOR CORPORATES AS WELL. THE MOTIVATION FOR DESIGNING BOOMERANG WAS TO CREATE A WORKPLACE THAT WELCOMED EMPLOYEES DAY AFTER DAY, ALONG WITH GIVING THE ORGANISATION THE LUXURY OF CUTTING UNNECESSARY COST AND DIVERTING THOSE INTO NEW THOUGHT AND INNOVATION. AT BOOMERANG YOUR NEIGHBOURS WILL INCLUDE TOP COMPANIES FROM VARIOUS SECTORS SUCH AS BANKING, INSURANCE, IT ENABLED SERVICES, TELECOM, PHARMACEUTICALS, FINANCIAL SERVICES, SHIPPING, FMCG, MEDIA, LOGISTICS ETC. WITH OVER 9000 PROFESSIONALS IN ITS FOLD, BOOMERANG IS EXPECTED TO BE THE MOST SOUGHT AFTER BUSINESS ADDRESS IN THE NEAR FUTURE.



ARTIFICIAL DESCRIPTION, SUBJECT TO CHANGE



LAYOUT



GROUND FLOOR PLAN



2ND FLOOR PLAN



TYPICAL FLOOR PLAN (OPTION I)



TYPICAL FLOOR PLAN (OPTION II)



7TH/8TH FLOOR PLAN (OPTION I)



7TH/8TH FLOOR PLAN (OPTION II)



BOOMERANG IS BROUGHT TO YOU BY KANAKIA SPACES, THE RENOWNED REAL ESTATE GROUP BEHIND MANY OF MUMBAI'S PRESTIGIOUS RESIDENTIAL, RETAIL AND COMMERCIAL PROJECTS. WITH OVER 25 YEARS OF EXPERIENCE IN THIS INDUSTRY, WE'RE CONSIDERED ONE OF THE LEADING DEVELOPERS IN MUMBAI TODAY.

PART OF THE REPUTED KANAKIA GROUP, WE'RE KNOWN FOR THE WORLD-CLASS STANDARDS WE ADHERE TO, THE PERFECT LOCATIONS OF OUR PROJECTS, THE SPACIOUS AND WELL-PLANNED LAYOUTS AND A CONSISTENCY IN DELIVERING ON TIME.

THE KANAKIA GROUP HAS A MAJOR PRESENCE NOT ONLY IN PREMIUM HOUSING, BUT ALSO IN HOSPITALITY, EDUCATION AND QUALITY ENTERTAINMENT.

OUR TRADITION OF CREATING CONTEMPORARY LANDMARKS LED US TO ENGAGE THE SERVICES OF DANIEL S. C. HSIA, THE WORLD-RENOWNED ARCHITECT, TO DESIGN THE UNIQUE STRUCTURE OF BOOMERANG. AFTER ALL, IT'S OUR MOST AMBITIOUS PROJECT YET. OUR HUMBLE OFFERING TO MUMBAI'S CORPORATE WORLD.



DANIEL S. C. HSIA
ARCHITECT

DEVELOPMENT

KANAKIA
SPACES

ENTERTAINMENT

CINELINE

EDUCATION



HOSPITALITY

KANAKIA
HOSPITALITY

SITE/SALES OFFICE : MAIN CHANDIVALI FARM ROAD, NEAR CHANDIVALI STUDIO, ANDHERI (E), MUMBAI - 400 072

CORPORATE OFFICE : 215 ATRIUM, 10TH FLOOR, ANDHERI KURLA ROAD, NEXT TO HOTEL COURTYARD BY MARRIOTT,

ANDHERI (E) MUMBAI - 93, TEL: 91 22 6726 6666 / 7777 E-MAIL: sales@kanakia.com WEBSITE: www.kanakia.com

Disclaimer: All drawings, amenities, facilities, ratings, certifications, layouts etc. shown in this brochure are subject to change as per the approval from the respective authorities. The final discretion remains with the developer.