

mantra
Residency
1, 2 RHK Homes & Shops

NIGHOJE - CHAKAN



EXPERIENCE A PREMIUM LIFESTYLE



*Rendered image for artistic impression only.



*Rendered image for artistic impression only

AMENITIES

INDOOR GAMES

CLUB HOUSE

MULTIPURPOSE ROOM

GYM

CHILDREN'S PLAY AREA

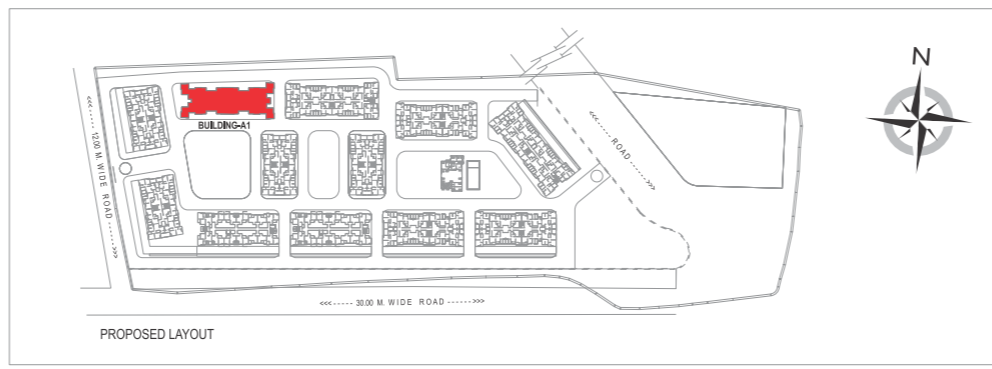
MULTIPURPOSE COURT

GARDEN

UTILITY RETAIL SHOPS IN CLOSE VICINITY

SPECIFICATIONS

- Earthquake resistant RCC structure
 - 2'x2' vitrified tile flooring
- Green marble kitchen platform with SS sink
 - Anti-skid ceramic tile flooring for toilet
 - Toilet dado up to lintel level
 - CP fittings - ISI certified
- Powder coated two track aluminium windows
 - Flush doors
- Electrical wiring and plumbing - ISI certified
 - Electrical switches - ISI certified



ILLUSTRATIVE PRESENTATION APARTMENT PLAN

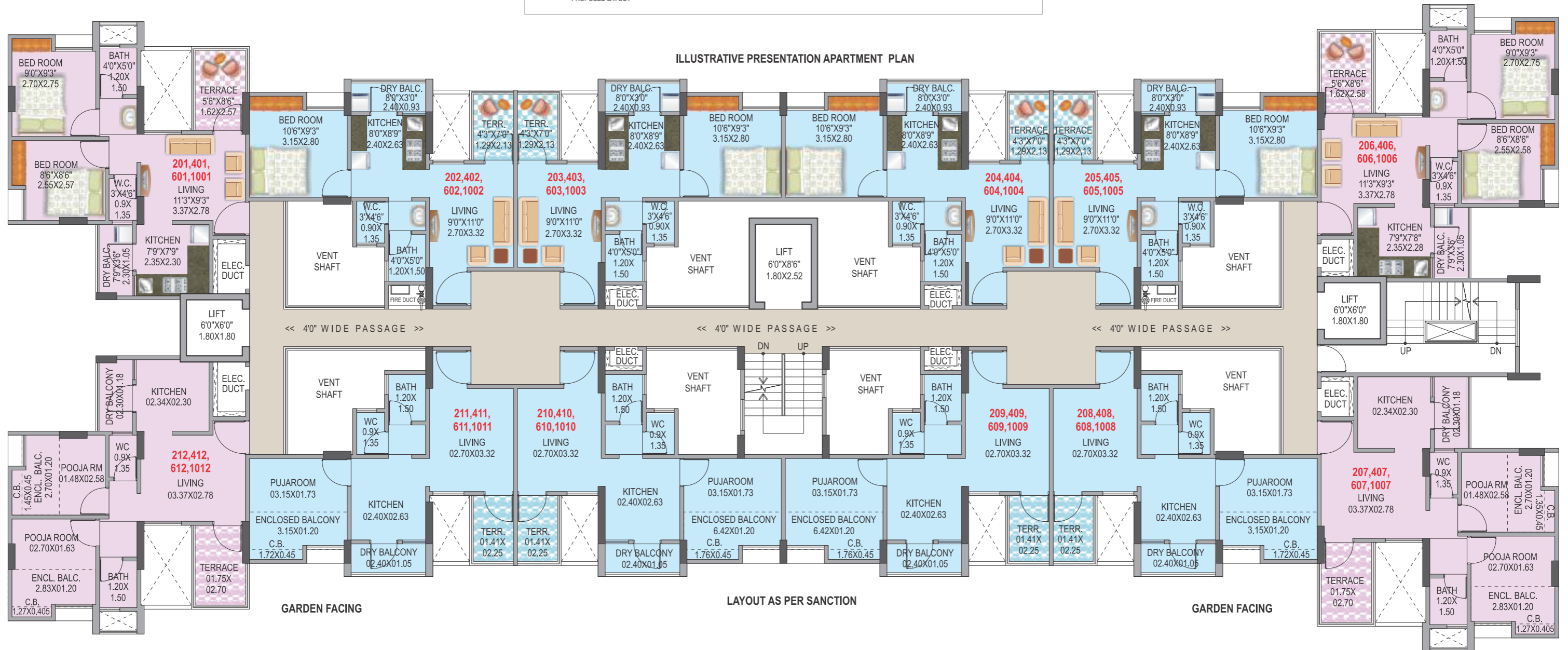
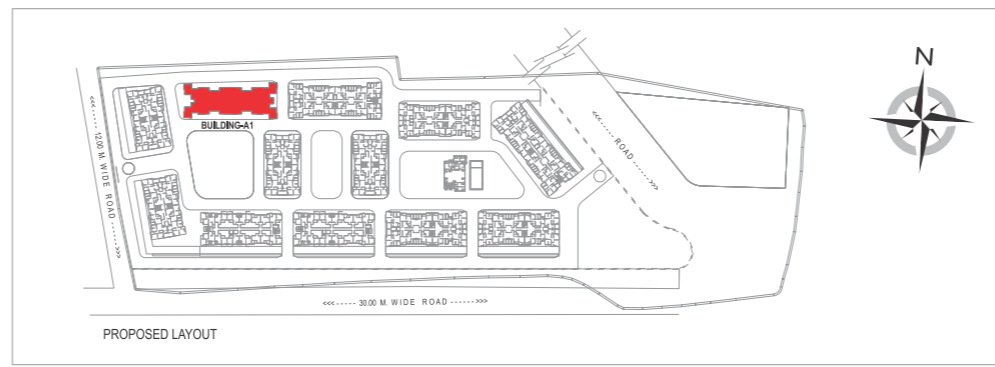


LAYOUT AS PER SANCTION

FLAT NO.	FLAT TYPE	CARPET AREA		EXCLUSIVE ENCLOSED BALCONY		EXCLUSIVE DRY TERRACE		EXCLUSIVE TERRACE		GROSS USABLE AREA	
		SQ.M.	SQ.FT.	SQ.M.	SQ.FT.	SQ.M.	SQ.FT.	SQ.M.	SQ.FT.	SQ.M.	SQ.FT.
101	1.5BHK	32.99	355.10	5.62	60.49	2.29	24.65	4.09	44.02	44.99	484.27
102	1BHK	28.88	310.86	3.33	35.84	2.13	22.93	3.00	32.29	37.34	401.93
103	1BHK	28.82	310.22	3.32	35.74	2.13	22.93	3.00	32.29	37.27	401.17
104	1BHK	28.82	310.22	3.32	35.74	2.13	22.93	3.00	32.29	37.27	401.17
105	1BHK	28.88	310.86	3.33	35.84	2.13	22.93	3.00	32.29	37.34	401.93
106	1.5BHK	33.61	361.78	5.54	59.63	2.32	24.97	4.09	44.02	45.56	490.41

FLAT NO.	FLAT TYPE	CARPET AREA		EXCLUSIVE ENCLOSED BALCONY		EXCLUSIVE DRY TERRACE		EXCLUSIVE TERRACE		GROSS USABLE AREA	
		SQ.M.	SQ.FT.	SQ.M.	SQ.FT.	SQ.M.	SQ.FT.	SQ.M.	SQ.FT.	SQ.M.	SQ.FT.
107	1.5BHK	33.71	362.85	5.54	59.63	2.34	25.19	4.09	44.02	45.68	491.70
108	1BHK	28.88	310.86	3.33	35.84	2.13	22.93	3.00	32.29	37.34	401.93
109	1BHK	28.82	310.22	3.32	35.74	2.13	22.93	3.00	32.29	37.27	401.17
110	1BHK	28.82	310.22	3.32	35.74	2.13	22.93	3.00	32.29	37.27	401.17
111	1BHK	28.88	310.86	3.33	35.84	2.13	22.93	3.00	32.29	37.34	401.93
112	1.5BHK	32.99	355.10	5.62	60.49	2.29	24.65	4.09	44.02	44.99	484.27

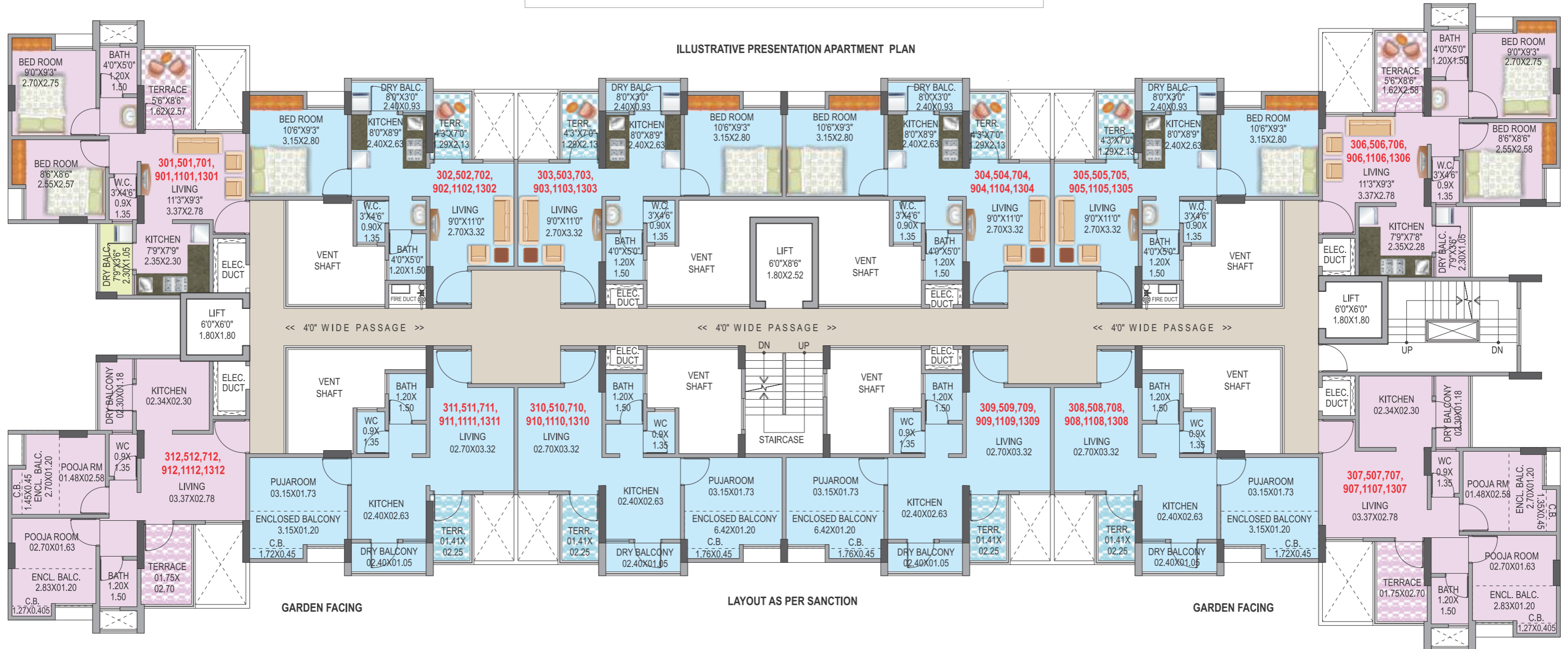
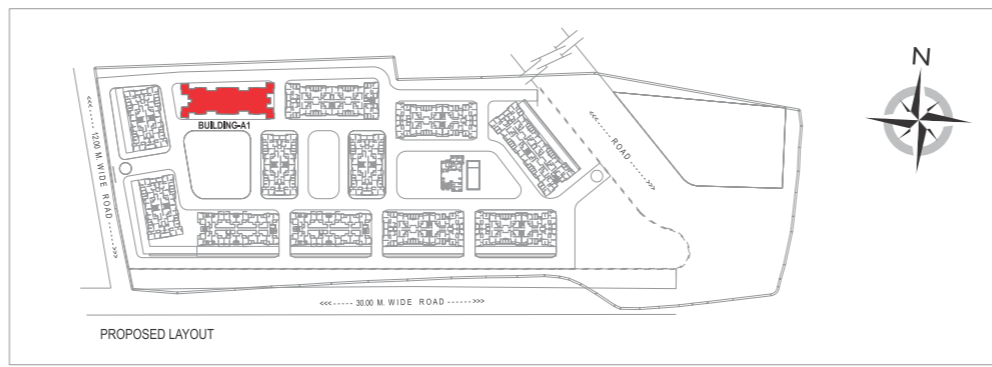
Note: 1. ** Carpet Area is calculated according to RERA norms, Excluding Plaster thickness & Including Cupboard Area. 2. Plaster Thickness are considered as Internal Plaster 10mm & External Plaster 20mm 3. All the areas other than carpet area are mentioned for Illustration purpose only. 4. Sale of apartment is on carpet area only. 5. Gross usable area = FLAT CARPET AREA + ENCLOSED BALCONY + TERRACE AREA + DRY TERRACE. 6. All Dimensions mentioned are for Unfinished surface & Including Enclosed Balcony.



FLAT NO.	FLAT TYPE	CARPET AREA		EXCLUSIVE ENCLOSED BALCONY		EXCLUSIVE DRY TERRACE		EXCLUSIVE TERRACE		GROSS USABLE AREA	
		SQ.M.	SQ.FT.	SQ.M.	SQ.FT.	SQ.M.	SQ.FT.	SQ.M.	SQ.FT.	SQ.M.	SQ.FT.
201, 401, 601, 1001	1.5BHK	32.61	351.01	5.62	60.49	2.29	24.65	3.91	42.09	44.43	478.24
202, 402, 602, 1002	1BHK	28.65	308.39	3.33	35.84	2.13	22.93	2.62	28.20	36.73	395.36
203, 403, 603, 1003	1BHK	28.55	307.31	3.32	35.74	2.13	22.93	2.62	28.20	36.62	394.18
204, 404, 604, 1004	1BHK	28.55	307.31	3.32	35.74	2.13	22.93	2.62	28.20	36.62	394.18
205, 405, 605, 1005	1BHK	28.65	308.39	3.33	35.84	2.13	22.93	2.62	28.20	36.73	395.36
206, 406, 606, 1006	1.5BHK	33.23	357.69	5.54	59.63	2.32	24.97	3.97	42.73	45.06	485.03

FLAT NO.	FLAT TYPE	CARPET AREA		EXCLUSIVE ENCLOSED BALCONY		EXCLUSIVE DRY TERRACE		EXCLUSIVE TERRACE		GROSS USABLE AREA	
		SQ.M.	SQ.FT.	SQ.M.	SQ.FT.	SQ.M.	SQ.FT.	SQ.M.	SQ.FT.	SQ.M.	SQ.FT.
207, 407, 607, 1007	1.5BHK	33.33	358.76	5.54	59.63	2.34	25.19	3.97	42.73	45.18	486.32
208, 408, 608, 1008	1BHK	28.65	308.39	3.33	35.84	2.13	22.93	2.62	28.20	36.73	395.36
209, 409, 609, 1009	1BHK	28.55	307.31	3.32	35.74	2.13	22.93	2.62	28.20	36.62	394.18
210, 410, 610, 1010	1BHK	28.55	307.31	3.32	35.74	2.13	22.93	2.62	28.20	36.62	394.18
211, 411, 611, 1011	1BHK	28.65	308.39	3.33	35.84	2.13	22.93	2.62	28.20	36.73	395.36
212, 412, 612, 1012	1.5BHK	32.61	351.01	5.62	60.49	2.29	24.65	3.91	42.09	44.43	478.24

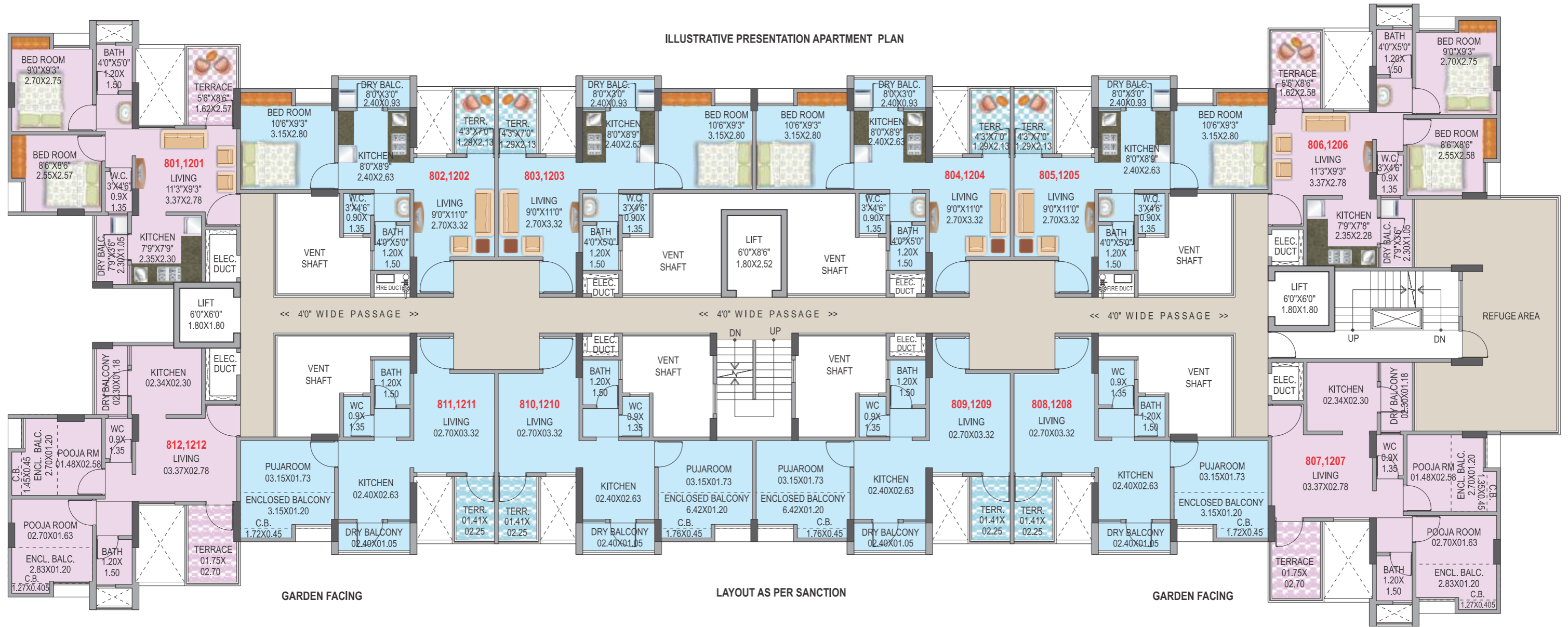
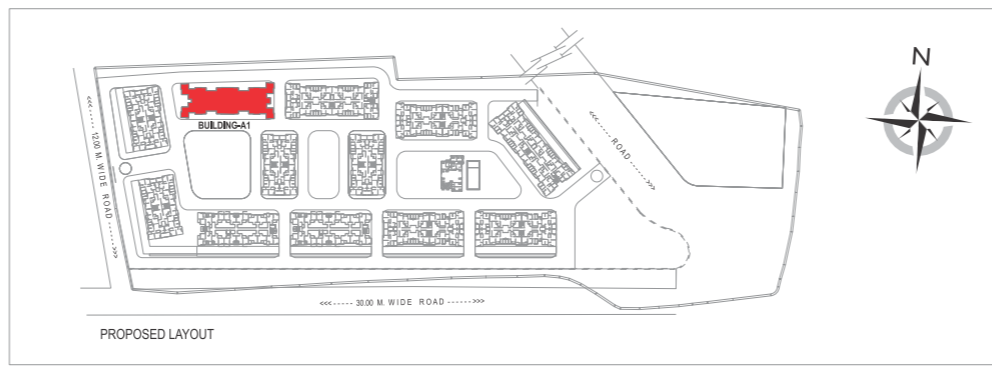
Note: 1. ** Carpet Area is calculated according to RERA norms, Excluding Plaster thickness & Including Cupboard Area. 2. Plaster Thickness are considered as Internal Plaster 10mm & External Plaster 20mm 3. All the areas other than carpet area are mentioned for Illustration purpose only. 4. Sale of apartment is on carpet area only. 5. Gross usable area = FLAT CARPET AREA + ENCLOSED BALCONY + TERRACE AREA + DRY TERRACE. 6. All Dimensions mentioned are for Unfinished surface & Including Enclosed Balcony.



FLAT NO.	FLAT TYPE	CARPET AREA		EXCLUSIVE ENCLOSED BALCONY		EXCLUSIVE DRY TERRACE		EXCLUSIVE TERRACE		GROSS USABLE AREA	
		SQ.M.	SQ.FT.	SQ.M.	SQ.FT.	SQ.M.	SQ.FT.	SQ.M.	SQ.FT.	SQ.M.	SQ.FT.
301, 501, 701, 901, 1101, 1301	1.5BHK	32.99	355.10	5.62	60.49	2.29	24.65	4.09	44.02	44.99	484.27
302, 502, 702, 902, 1102, 1302	1BHK	28.88	310.86	3.33	35.84	2.13	22.93	2.59	27.88	36.93	397.51
303, 503, 703, 903, 1103, 1303	1BHK	28.82	310.22	3.32	35.74	2.13	22.93	2.59	27.88	36.86	396.76
304, 504, 704, 904, 1104, 1304	1BHK	28.82	310.22	3.32	35.74	2.13	22.93	2.59	27.88	36.86	396.76
305, 505, 705, 905, 1105, 1305	1BHK	28.88	310.86	3.33	35.84	2.13	22.93	2.59	27.88	36.93	397.51
306, 506, 706, 906, 1106, 1306	1.5BHK	33.61	361.78	5.54	59.63	2.32	24.97	4.09	44.02	45.56	490.41

FLAT NO.	FLAT TYPE	CARPET AREA		EXCLUSIVE ENCLOSED BALCONY		EXCLUSIVE DRY TERRACE		EXCLUSIVE TERRACE		GROSS USABLE AREA	
		SQ.M.	SQ.FT.	SQ.M.	SQ.FT.	SQ.M.	SQ.FT.	SQ.M.	SQ.FT.	SQ.M.	SQ.FT.
307, 507, 707, 907, 1107, 1307	1.5BHK	33.71	362.85	5.54	59.63	2.34	25.19	4.09	44.02	45.68	491.70
308, 508, 708, 908, 1108, 1308	1BHK	28.88	310.86	3.33	35.84	2.13	22.93	2.59	27.88	36.93	397.51
309, 509, 709, 909, 1109, 1309	1BHK	28.82	310.22	3.32	35.74	2.13	22.93	2.59	27.88	36.86	396.76
310, 510, 710, 910, 1110, 1310	1BHK	28.82	310.22	3.32	35.74	2.13	22.93	2.59	27.88	36.86	396.76
311, 511, 711, 911, 1111, 1311	1BHK	28.88	310.86	3.33	35.84	2.13	22.93	2.59	27.88	36.93	397.51
312, 512, 712, 912, 1112, 1312	1.5BHK	32.99	355.10	5.62	60.49	2.29	24.65	4.09	44.02	44.99	484.27

Note: 1. ** Carpet Area is calculated according to RERA norms, Excluding Plaster thickness & Including Cupboard Area. 2. Plaster Thickness are considered as Internal Plaster 10mm & External Plaster 20mm 3. All the areas other than carpet area are mentioned for Illustration purpose only. 4. Sale of apartment is on carpet area only. 5. Gross usable area = FLAT CARPET AREA + ENCLOSED BALCONY + TERRACE AREA + DRY TERRACE. 6. All Dimensions mentioned are for Unfinished surface & Including Enclosed Balcony.



FLAT TYPE	FLAT NO.	CARPET AREA		EXCLUSIVE ENCLOSED BALCONY		EXCLUSIVE DRY TERRACE		EXCLUSIVE TERRACE		GROSS USABLE AREA	
		SQ.M.	SQ.FT.	SQ.M.	SQ.FT.	SQ.M.	SQ.FT.	SQ.M.	SQ.FT.	SQ.M.	SQ.FT.
801, 1201	1.5BHK	32.61	351.01	5.62	60.49	2.29	24.65	3.91	42.09	44.43	478.24
802, 1202	1BHK	28.65	308.39	3.33	35.84	2.13	22.93	2.62	28.20	36.73	395.36
803, 1203	1BHK	28.55	307.31	3.32	35.74	2.13	22.93	2.62	28.20	36.62	394.18
804, 1204	1BHK	28.55	307.31	3.32	35.74	2.13	22.93	2.62	28.20	36.62	394.18
805, 1205	1BHK	28.65	308.39	3.33	35.84	2.13	22.93	2.62	28.20	36.73	395.36
806, 1206	1.5BHK	33.23	357.69	5.54	59.63	2.32	24.97	3.97	42.73	45.06	485.03

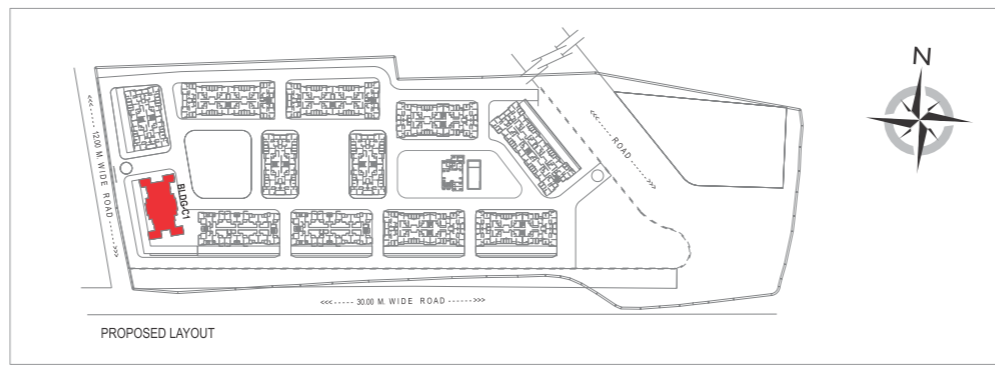
FLAT TYPE	FLAT NO.	CARPET AREA		EXCLUSIVE ENCLOSED BALCONY		EXCLUSIVE DRY TERRACE		EXCLUSIVE TERRACE		GROSS USABLE AREA	
		SQ.M.	SQ.FT.	SQ.M.	SQ.FT.	SQ.M.	SQ.FT.	SQ.M.	SQ.FT.	SQ.M.	SQ.FT.
807, 1207	1.5BHK	33.33	358.76	5.54	59.63	2.34	25.19	3.97	42.73	45.18	486.32
808, 1208	1BHK	28.65	308.39	3.33	35.84	2.13	22.93	2.62	28.20	36.73	395.36
809, 1209	1BHK	28.55	307.31	3.32	35.74	2.13	22.93	2.62	28.20	36.62	394.18
810, 1210	1BHK	28.55	307.31	3.32	35.74	2.13	22.93	2.62	28.20	36.62	394.18
811, 1211	1BHK	28.65	308.39	3.33	35.84	2.13	22.93	2.62	28.20	36.73	395.36
812, 1212	1.5BHK	32.61	351.01	5.62	60.49	2.29	24.65	3.91	42.09	44.43	478.24

Note: 1. ** Carpet Area is calculated according to RERA norms, Excluding Plaster thickness & Including Cupboard Area. 2. Plaster Thickness are considered as Internal Plaster 10mm & External Plaster 20mm 3. All the areas other than carpet area are mentioned for Illustration purpose only. 4. Sale of apartment is on carpet area only. 5. Gross usable area = FLAT CARPET AREA + ENCLOSED BALCONY + TERRACE AREA + DRY TERRACE. 6. All Dimensions mentioned are for Unfinished surface & Including Enclosed Balcony.

C1 BUILDING

1st Floor Plan

RERA REGISTRATION NO.
P52100001165



mantra
Residency

ILLUSTRATIVE PRESENTATION APARTMENT PLAN



LAYOUT AS PER SANCTION

FLAT NO.	FLAT TYPE	CARPET AREA		EXCLUSIVE ENCLOSED BALCONY		EXCLUSIVE DRY TERRACE		EXCLUSIVE TERRACE		GROSS USABLE AREA	
		SQ.M.	SQ.FT.	SQ.M.	SQ.FT.	SQ.M.	SQ.FT.	SQ.M.	SQ.FT.	SQ.M.	SQ.FT.
101	1.5BHK	33.34	358.87	5.60	60.28	2.28	24.54	4.09	44.02	45.31	487.72
102	1BHK	27.61	297.19	2.59	27.88	2.14	23.03	3.44	37.03	35.78	385.14
103	1BHK	27.60	297.09	2.59	27.88	2.14	23.03	2.74	29.49	35.07	377.49
104	2BHK	36.83	396.44	5.27	56.73	2.83	30.46	4.36	46.93	49.29	530.56

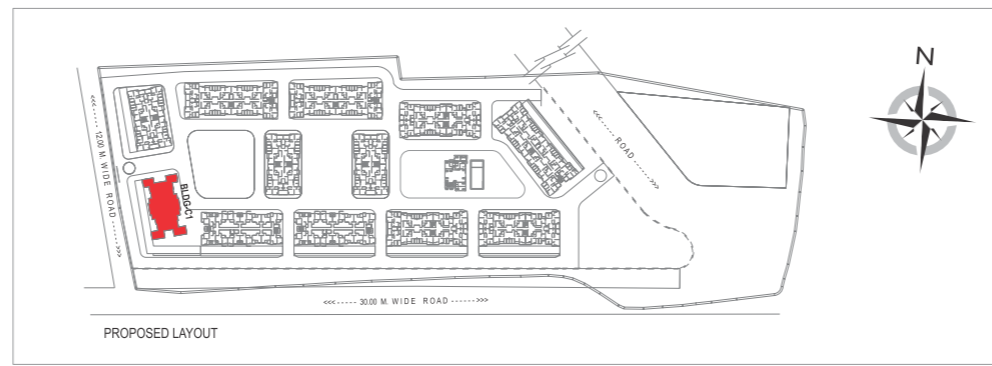
FLAT NO.	FLAT TYPE	CARPET AREA		EXCLUSIVE ENCLOSED BALCONY		EXCLUSIVE DRY TERRACE		EXCLUSIVE TERRACE		GROSS USABLE AREA	
		SQ.M.	SQ.FT.	SQ.M.	SQ.FT.	SQ.M.	SQ.FT.	SQ.M.	SQ.FT.	SQ.M.	SQ.FT.
105	2BHK	36.83	396.44	5.27	56.73	2.83	30.46	4.36	46.93	49.29	530.56
106	1BHK	27.60	297.09	2.59	27.88	2.14	23.03	2.74	29.49	35.07	377.49
107	1BHK	27.61	297.19	2.59	27.88	2.14	23.03	3.44	37.03	35.78	385.14
108	1.5BHK	33.34	358.87	5.60	60.28	2.28	24.54	4.09	44.02	45.31	487.72

Note: 1. ** Carpet Area is calculated according to RERA norms, Excluding Plaster thickness & Including Cupboard Area. 2. Plaster Thickness are considered as Internal Plaster 10mm & External Plaster 20mm 3. All the areas other than carpet area are mentioned for Illustration purpose only. 4. Sale of apartment is on carpet area only. 5.*Gross usable area = FLAT CARPET AREA + ENCLOSED BALCONY + TERRACE AREA + DRY TERRACE. 6. All Dimensions mentioned are for Unfinished surface & Including Enclosed Balcony.

C1 BUILDING

3rd, 5th, 7th, 9th & 11th Floor Plan

RERA REGISTRATION NO.
P52100001165



mantra
Residency

ILLUSTRATIVE PRESENTATION APARTMENT PLAN



LAYOUT AS PER SANCTION

FLAT NO.	FLAT TYPE	CARPET AREA		EXCLUSIVE ENCLOSED BALCONY		EXCLUSIVE DRY TERRACE		EXCLUSIVE TERRACE		GROSS USABLE AREA	
		SQ.M.	SQ.FT.	SQ.M.	SQ.FT.	SQ.M.	SQ.FT.	SQ.M.	SQ.FT.	SQ.M.	SQ.FT.
301, 501, 701, 901, 1101	1.5BHK	33.34	358.87	5.60	60.28	2.28	24.54	4.09	44.02	45.31	487.72
302, 502, 702, 902, 1102	1BHK	27.61	297.19	2.59	27.88	2.14	23.03	2.59	27.88	34.93	375.99
303, 503, 703, 903, 1103	1BHK	27.60	297.09	2.59	27.88	2.14	23.03	2.59	27.88	34.92	375.88
304, 504, 704, 904, 1104	2BHK	36.83	396.44	5.27	56.73	2.83	30.46	4.36	46.93	49.29	530.56

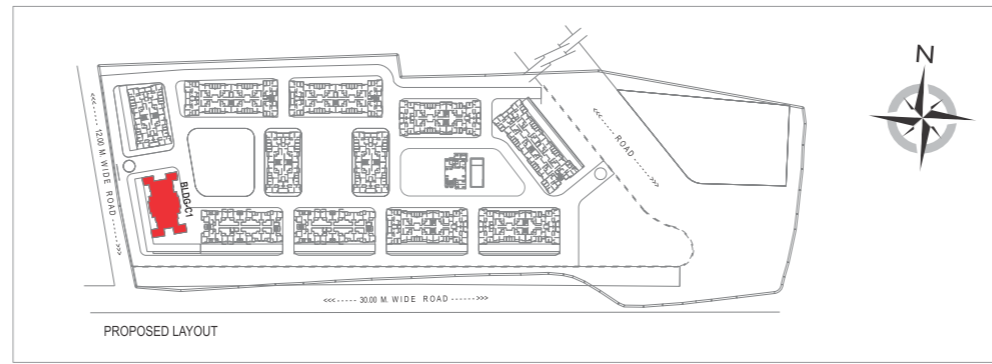
FLAT NO.	FLAT TYPE	CARPET AREA		EXCLUSIVE ENCLOSED BALCONY		EXCLUSIVE DRY TERRACE		EXCLUSIVE TERRACE		GROSS USABLE AREA	
		SQ.M.	SQ.FT.	SQ.M.	SQ.FT.	SQ.M.	SQ.FT.	SQ.M.	SQ.FT.	SQ.M.	SQ.FT.
305, 505, 705, 905, 1105	2BHK	36.83	396.44	5.27	56.73	2.83	30.46	4.36	46.93	49.29	530.56
306, 506, 706, 906, 1106	1BHK	27.60	297.09	2.59	27.88	2.14	23.03	2.59	27.88	34.92	375.88
307, 507, 707, 907, 1107	1BHK	27.61	297.19	2.59	27.88	2.14	23.03	2.59	27.88	34.93	375.99
308, 508, 708, 908, 1108	1.5BHK	33.34	358.87	5.60	60.28	2.28	24.54	4.09	44.02	45.31	487.72

Note: 1. ** Carpet Area is calculated according to RERA norms, Excluding Plaster thickness & Including Cupboard Area. 2. Plaster Thickness are considered as Internal Plaster 10mm & External Plaster 20mm 3. All the areas other than carpet area are mentioned for Illustration purpose only. 4. Sale of apartment is on carpet area only. 5. *Gross usable area = FLAT CARPET AREA + ENCLOSED BALCONY + TERRACE AREA + DRY TERRACE. 6. All Dimensions mentioned are for Unfinished surface & Including Enclosed Balcony.

C1 BUILDING

2nd, 4th, 6th, 10th & 12th Floor Plan

RERA REGISTRATION NO.
P52100001165



mantra
Residency

ILLUSTRATIVE PRESENTATION APARTMENT PLAN



LAYOUT AS PER SANCTION

FLAT NO.	FLAT TYPE	CARPET AREA		EXCLUSIVE ENCLOSED BALCONY		EXCLUSIVE DRY TERRACE		EXCLUSIVE TERRACE		GROSS USABLE AREA	
		SQ.M.	SQ.FT.	SQ.M.	SQ.FT.	SQ.M.	SQ.FT.	SQ.M.	SQ.FT.	SQ.M.	SQ.FT.
201, 401, 601, 1001, 1201	1.5BHK	32.98	355.00	5.60	60.28	2.28	24.54	4.04	43.49	44.90	483.30
202, 402, 602, 1002, 1202	1BHK	27.37	294.61	2.59	27.88	2.14	23.03	2.49	26.80	34.59	372.33
203, 403, 603, 1003, 1203	1BHK	27.35	294.40	2.59	27.88	2.14	23.03	2.52	27.13	34.60	372.43
204, 404, 604, 1004, 1204	2BHK	36.41	391.92	5.27	56.73	2.83	30.46	4.34	46.72	48.85	525.82

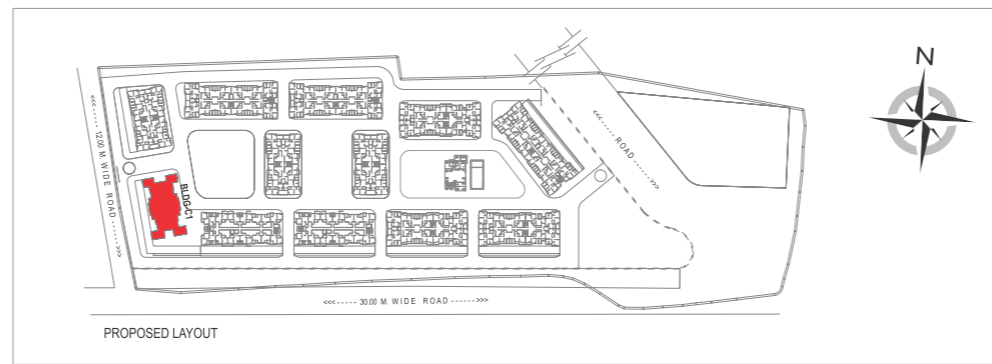
FLAT NO.	FLAT TYPE	CARPET AREA		EXCLUSIVE ENCLOSED BALCONY		EXCLUSIVE DRY TERRACE		EXCLUSIVE TERRACE		GROSS USABLE AREA	
		SQ.M.	SQ.FT.	SQ.M.	SQ.FT.	SQ.M.	SQ.FT.	SQ.M.	SQ.FT.	SQ.M.	SQ.FT.
205, 405, 605, 1005, 1205	2BHK	36.41	391.92	5.27	56.73	2.83	30.46	4.34	46.72	48.85	525.82
206, 406, 606, 1006, 1206	1BHK	27.35	294.40	2.59	27.88	2.14	23.03	2.52	27.13	34.60	372.43
207, 407, 607, 1007, 1207	1BHK	27.37	294.61	2.59	27.88	2.14	23.03	2.49	26.80	34.59	372.33
208, 408, 608, 1008, 1208	1.5BHK	32.98	355.00	5.60	60.28	2.28	24.54	4.04	43.49	44.90	483.30

Note: 1. ** Carpet Area is calculated according to RERA norms, Excluding Plaster thickness & Including Cupboard Area. 2. Plaster Thickness are considered as Internal Plaster 10mm & External Plaster 20mm 3. All the areas other than carpet area are mentioned for illustration purpose only. 4. Sale of apartment is on carpet area only. 5.*Gross usable area = FLAT CARPET AREA + ENCLOSED BALCONY + TERRACE AREA + DRY TERRACE. 6. All Dimensions mentioned are for Unfinished surface & Including Enclosed Balcony.

C1 BUILDING

8th Floor Plan

RERA REGISTRATION NO.
P52100001165



mantra
Residency

ILLUSTRATIVE PRESENTATION APARTMENT PLAN



LAYOUT AS PER SANCTION

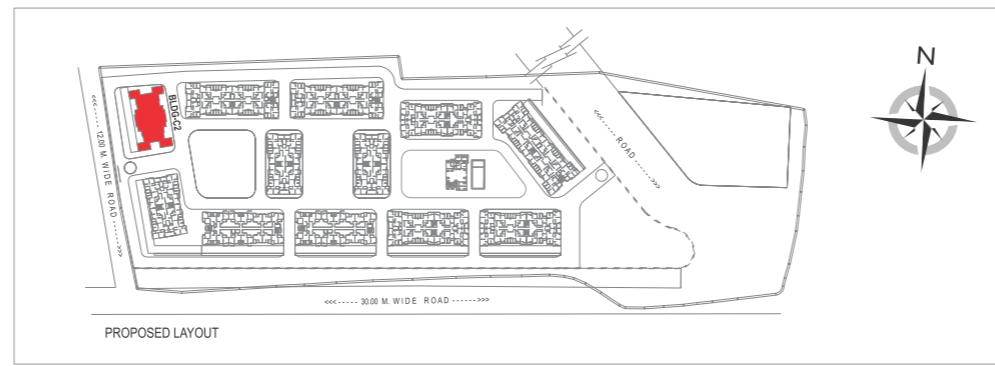
FLAT NO.	FLAT TYPE	CARPET AREA		EXCLUSIVE ENCLOSED BALCONY		EXCLUSIVE DRY TERRACE		EXCLUSIVE TERRACE		GROSS USABLE AREA	
		SQ.M.	SQ.FT.	SQ.M.	SQ.FT.	SQ.M.	SQ.FT.	SQ.M.	SQ.FT.	SQ.M.	SQ.FT.
801	1.5BHK	33.49	360.49	5.09	54.79	2.28	24.54	4.04	43.49	44.90	483.30
802	1BHK	27.37	294.61	2.59	27.88	2.14	23.03	2.49	26.80	34.59	372.33
803	1BHK	27.35	294.40	2.59	27.88	2.14	23.03	2.52	27.13	34.60	372.43
804	2BHK	36.41	391.92	5.27	56.73	2.83	30.46	4.34	46.72	48.85	525.82

FLAT NO.	FLAT TYPE	CARPET AREA		EXCLUSIVE ENCLOSED BALCONY		EXCLUSIVE DRY TERRACE		EXCLUSIVE TERRACE		GROSS USABLE AREA	
		SQ.M.	SQ.FT.	SQ.M.	SQ.FT.	SQ.M.	SQ.FT.	SQ.M.	SQ.FT.	SQ.M.	SQ.FT.
805	2BHK	36.41	391.92	5.27	56.73	2.83	30.46	4.34	46.72	48.85	525.82
806	1BHK	27.35	294.40	2.59	27.88	2.14	23.03	2.52	27.13	34.60	372.43
807 (REFUGE AREA)	1BHK	0.00	0.00	0.00	0.00	0.00	0.00	0.00	0.00	0.00	0.00
808	1.5BHK	33.49	360.49	5.09	54.79	2.28	24.54	4.04	43.49	44.90	483.30

Note: 1. ** Carpet Area is calculated according to RERA norms, Excluding Plaster thickness & Including Cupboard Area. 2. Plaster Thickness are considered as Internal Plaster 10mm & External Plaster 20mm 3. All the areas other than carpet area are mentioned for illustration purpose only. 4. Sale of apartment is on carpet area only. 5. *Gross usable area = FLAT CARPET AREA + ENCLOSED BALCONY + TERRACE AREA + DRY TERRACE. 6. All Dimensions mentioned are for Unfinished surface & Including Enclosed Balcony.

PHASE - I
C2 BUILDING
1st Floor Plan

RERA REGISTRATION NO.
P52100001165



mantra
Residency



FLAT NO.	FLAT TYPE	CARPET AREA		EXCLUSIVE ENCLOSED BALCONY		EXCLUSIVE DRY TERRACE		EXCLUSIVE TERRACE		GROSS USABLE AREA	
		SQ.M.	SQ.FT.	SQ.M.	SQ.FT.	SQ.M.	SQ.FT.	SQ.M.	SQ.FT.	SQ.M.	SQ.FT.
101	1.5BHK	33.34	358.87	5.60	60.28	2.28	24.54	4.09	44.02	45.31	487.72
102	1BHK	27.61	297.19	2.59	27.88	2.14	23.03	3.44	37.03	35.78	385.14
103	1BHK	27.60	297.09	2.59	27.88	2.14	23.03	2.74	29.49	35.07	377.49
104	2BHK	36.83	396.44	5.27	56.73	2.83	30.46	4.36	46.93	49.29	530.56

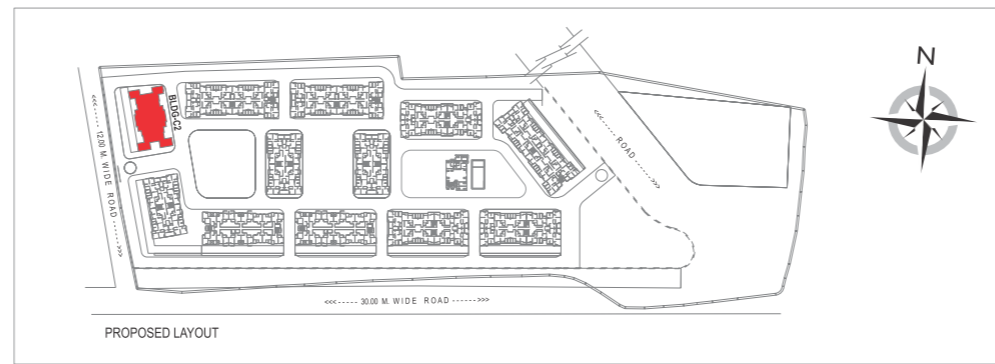
FLAT NO.	FLAT TYPE	CARPET AREA		EXCLUSIVE ENCLOSED BALCONY		EXCLUSIVE DRY TERRACE		EXCLUSIVE TERRACE		GROSS USABLE AREA	
		SQ.M.	SQ.FT.	SQ.M.	SQ.FT.	SQ.M.	SQ.FT.	SQ.M.	SQ.FT.	SQ.M.	SQ.FT.
105	2BHK	36.83	396.44	5.27	56.73	2.83	30.46	4.36	46.93	49.29	530.56
106	1BHK	27.60	297.09	2.59	27.88	2.14	23.03	2.74	29.49	35.07	377.49
107	1BHK	27.61	297.19	2.59	27.88	2.14	23.03	3.44	37.03	35.78	385.14
108	1.5BHK	33.34	358.87	5.60	60.28	2.28	24.54	4.09	44.02	45.31	487.72

Note: 1. ** Carpet Area is calculated according to RERA norms, Excluding Plaster thickness & Including Cupboard Area. 2. Plaster Thickness are considered as Internal Plaster 10mm & External Plaster 20mm 3. All the areas other than carpet area are mentioned for Illustration purpose only. 4. Sale of apartment is on carpet area only. 5. Gross usable area = FLAT CARPET AREA + ENCLOSED BALCONY + TERRACE AREA + DRY TERRACE. 6. All Dimensions mentioned are for Unfinished surface & Including Enclosed Balcony.

PHASE - I C2 BUILDING

3rd, 5th, 7th, 9th & 11th Floor Plan

RERA REGISTRATION NO.
P52100001165



mantra
Residency



FLAT NO.	FLAT TYPE	CARPET AREA		EXCLUSIVE ENCLOSED BALCONY		EXCLUSIVE DRY TERRACE		EXCLUSIVE TERRACE		GROSS USABLE AREA	
		SQ.M.	SQ.FT.	SQ.M.	SQ.FT.	SQ.M.	SQ.FT.	SQ.M.	SQ.FT.	SQ.M.	SQ.FT.
301, 501, 701, 901, 1101	1.5BHK	33.34	358.87	5.60	60.28	2.28	24.54	4.09	44.02	45.31	487.72
302, 502, 702, 902, 1102	1BHK	27.61	297.19	2.59	27.88	2.14	23.03	2.59	27.88	34.93	375.99
303, 503, 703, 903, 1103	1BHK	27.60	297.09	2.59	27.88	2.14	23.03	2.59	27.88	34.92	375.88
304, 504, 704, 904, 1104	2BHK	36.83	396.44	5.27	56.73	2.83	30.46	4.36	46.93	49.29	530.56

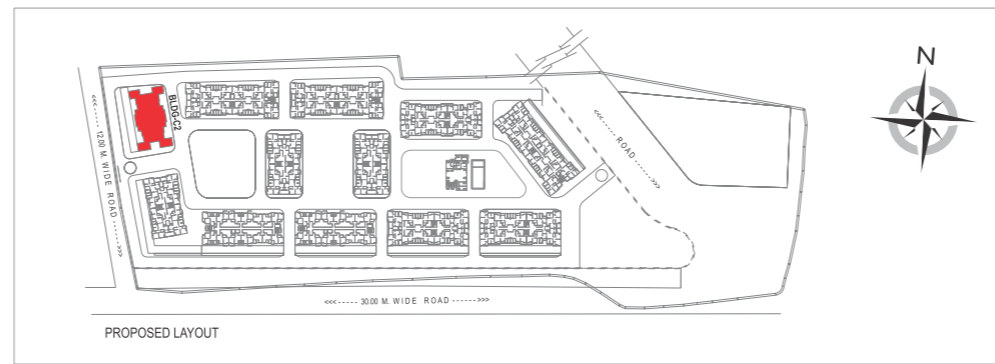
FLAT NO.	FLAT TYPE	CARPET AREA		EXCLUSIVE ENCLOSED BALCONY		EXCLUSIVE DRY TERRACE		EXCLUSIVE TERRACE		GROSS USABLE AREA	
		SQ.M.	SQ.FT.	SQ.M.	SQ.FT.	SQ.M.	SQ.FT.	SQ.M.	SQ.FT.	SQ.M.	SQ.FT.
305, 505, 705, 905, 1105	2BHK	36.83	396.44	5.27	56.73	2.83	30.46	4.36	46.93	49.29	530.56
306, 506, 706, 906, 1106	1BHK	27.60	297.09	2.59	27.88	2.14	23.03	2.59	27.88	34.92	375.88
307, 507, 707, 907, 1107	1BHK	27.61	297.19	2.59	27.88	2.14	23.03	2.59	27.88	34.93	375.99
308, 508, 708, 908, 1108	1.5BHK	33.34	358.87	5.60	60.28	2.28	24.54	4.09	44.02	45.31	487.72

Note: 1. ** Carpet Area is calculated according to RERA norms, Excluding Plaster thickness & Including Cupboard Area. 2. Plaster Thickness are considered as Internal Plaster 10mm & External Plaster 20mm 3. All the areas other than carpet area are mentioned for Illustration purpose only. 4. Sale of apartment is on carpet area only. 5. Gross usable area = FLAT CARPET AREA + ENCLOSED BALCONY + TERRACE AREA + DRY TERRACE. 6. All Dimensions mentioned are for Unfinished surface & Including Enclosed Balcony.

PHASE - I C2 BUILDING

2nd, 4th, 6th, 10th & 12th Floor Plan

RERA REGISTRATION NO.
P52100001165



mantra
Residency



FLAT NO.	FLAT TYPE	CARPET AREA		EXCLUSIVE ENCLOSED BALCONY		EXCLUSIVE DRY TERRACE		EXCLUSIVE TERRACE		GROSS USABLE AREA	
		SQ.M.	SQ.FT.	SQ.M.	SQ.FT.	SQ.M.	SQ.FT.	SQ.M.	SQ.FT.	SQ.M.	SQ.FT.
201, 401, 601, 1001, 1201	1.5BHK	32.98	355.00	5.60	60.28	2.28	24.54	4.04	43.49	44.90	483.30
202, 402, 602, 1002, 1202	1BHK	27.37	294.61	2.59	27.88	2.14	23.03	2.49	26.80	34.59	372.33
203, 403, 603, 1003, 1203	1BHK	27.35	294.40	2.59	27.88	2.14	23.03	2.52	27.13	34.60	372.43
204, 404, 604, 1004, 1204	2BHK	36.41	391.92	5.27	56.73	2.83	30.46	4.34	46.72	48.85	525.82

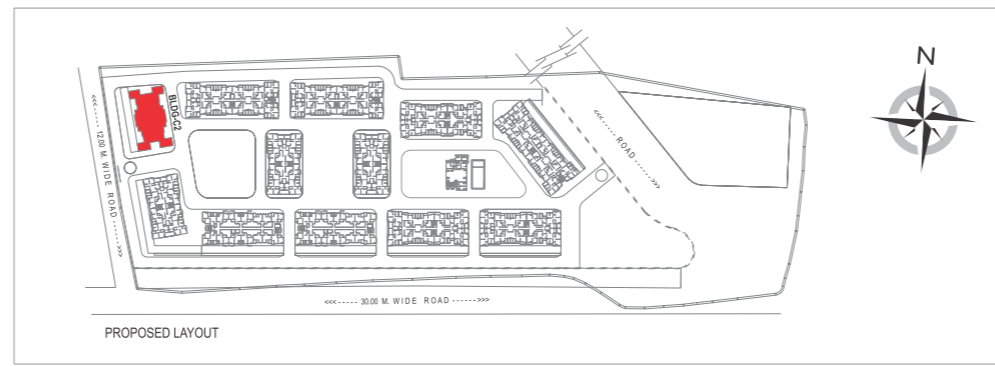
FLAT NO.	FLAT TYPE	CARPET AREA		EXCLUSIVE ENCLOSED BALCONY		EXCLUSIVE DRY TERRACE		EXCLUSIVE TERRACE		GROSS USABLE AREA	
		SQ.M.	SQ.FT.	SQ.M.	SQ.FT.	SQ.M.	SQ.FT.	SQ.M.	SQ.FT.	SQ.M.	SQ.FT.
205, 405, 605, 1005, 1205	2BHK	36.41	391.92	5.27	56.73	2.83	30.46	4.34	46.72	48.85	525.82
206, 406, 606, 1006, 1206	1BHK	27.35	294.40	2.59	27.88	2.14	23.03	2.52	27.13	34.60	372.43
207, 407, 607, 1007, 1207	1BHK	27.37	294.61	2.59	27.88	2.14	23.03	2.49	26.80	34.59	372.33
208, 408, 608, 1008, 1208	1.5BHK	32.98	355.00	5.60	60.28	2.28	24.54	4.04	43.49	44.90	483.30

Note: 1. ** Carpet Area is calculated according to RERA norms, Excluding Plaster thickness & Including Cupboard Area. 2. Plaster Thickness are considered as Internal Plaster 10mm & External Plaster 20mm 3. All the areas other than carpet area are mentioned for illustration purpose only. 4. Sale of apartment is on carpet area only. 5. Gross usable area = FLAT CARPET AREA + ENCLOSED BALCONY + TERRACE AREA + DRY TERRACE. 6. All Dimensions mentioned are for Unfinished surface & Including Enclosed Balcony.

PHASE - I C2 BUILDING

8th Floor Plan

RERA REGISTRATION NO.
P52100001165



mantra
Residency

ILLUSTRATIVE PRESENTATION APARTMENT PLAN



LAYOUT AS PER SANCTION

FLAT NO.	FLAT TYPE	CARPET AREA		EXCLUSIVE ENCLOSED BALCONY		EXCLUSIVE DRY TERRACE		EXCLUSIVE TERRACE		GROSS USABLE AREA	
		SQ.M.	SQ.FT.	SQ.M.	SQ.FT.	SQ.M.	SQ.FT.	SQ.M.	SQ.FT.	SQ.M.	SQ.FT.
801	1.5BHK	33.49	360.49	5.09	54.79	2.28	24.54	4.04	43.49	44.90	483.30
802	1BHK	27.37	294.61	2.59	27.88	2.14	23.03	2.49	26.80	34.59	372.33
803	1BHK	27.35	294.40	2.59	27.88	2.14	23.03	2.52	27.13	34.60	372.43
804	2BHK	36.41	391.92	5.27	56.73	2.83	30.46	4.34	46.72	48.85	525.82

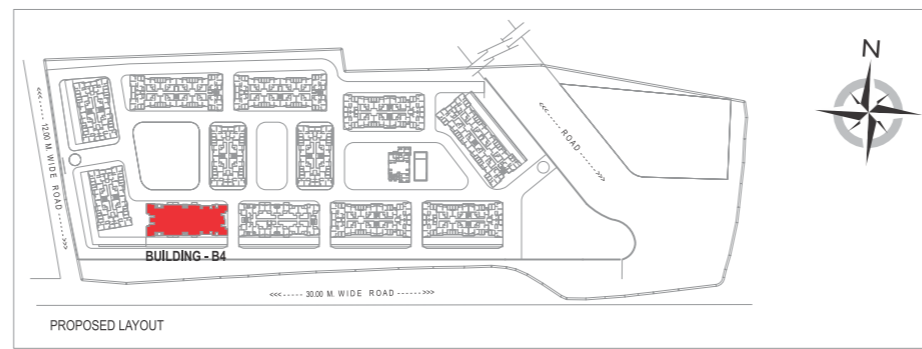
FLAT NO.	FLAT TYPE	CARPET AREA		EXCLUSIVE ENCLOSED BALCONY		EXCLUSIVE DRY TERRACE		EXCLUSIVE TERRACE		GROSS USABLE AREA	
		SQ.M.	SQ.FT.	SQ.M.	SQ.FT.	SQ.M.	SQ.FT.	SQ.M.	SQ.FT.	SQ.M.	SQ.FT.
805	2BHK	36.41	391.92	5.27	56.73	2.83	30.46	4.34	46.72	48.85	525.82
806	1BHK	27.35	294.40	2.59	27.88	2.14	23.03	2.52	27.13	34.60	372.43
807 (REFUGE AREA)	1BHK	0.00	0.00	0.00	0.00	0.00	0.00	0.00	0.00	0.00	0.00
808	1.5BHK	33.49	360.49	5.09	54.79	2.28	24.54	4.04	43.49	44.90	483.30

Note: 1. ** Carpet Area is calculated according to RERA norms, Excluding Plaster thickness & Including Cupboard Area. 2. Plaster Thickness are considered as Internal Plaster 10mm & External Plaster 20mm 3. All the areas other than carpet area are mentioned for illustration purpose only.
4. Sale of apartment is on carpet area only. 5. Gross usable area = FLAT CARPET AREA + ENCLOSED BALCONY + TERRACE AREA + DRY TERRACE. 6. All Dimensions mentioned are for Unfinished surface & Including Enclosed Balcony.

PHASE - II BUILDING - B4

1st, 3rd, 5th, 7th, 9th & 11th Floor Plan

RERA REGISTRATION
NO. P52100001788



mantra
Residency



FLAT NO.	FLAT TYPE	CARPET AREA		EXCLUSIVE ENCLOSED BALCONY		EXCLUSIVE DRY TERRACE		EXCLUSIVE TERRACE		GROSS USABLE AREA	
		SQ.M.	SQ.FT.	SQ.M.	SQ.FT.	SQ.M.	SQ.FT.	SQ.M.	SQ.FT.	SQ.M.	SQ.FT.
101, 301, 501, 701, 901, 1101	2BHK	30.69	330.35	7.41	79.76	0.00	0.00	2.73	29.39	40.83	439.49
102, 302, 502, 702, 902, 1102	1BHK	25.10	270.18	0.00	0.00	0.00	0.00	3.47	37.35	28.57	307.53
103, 303, 503, 703, 903, 1103	1BHK	25.13	270.50	0.00	0.00	0.00	0.00	3.47	37.35	28.60	307.85
104, 304, 504, 704, 904, 1104	1BHK	25.13	270.50	0.00	0.00	0.00	0.00	3.44	37.03	28.57	307.53
105, 305, 505, 705, 905, 1105	1HK	18.72	201.50	0.00	0.00	1.58	17.01	0.00	0.00	20.30	218.51
106, 306, 506, 706, 906, 1106	1HK	18.54	199.56	0.00	0.00	1.58	17.01	0.00	0.00	20.12	216.57
107, 307, 507, 707, 907, 1107	1BHK	21.41	230.46	3.85	41.44	0.00	0.00	2.41	25.94	27.67	297.84

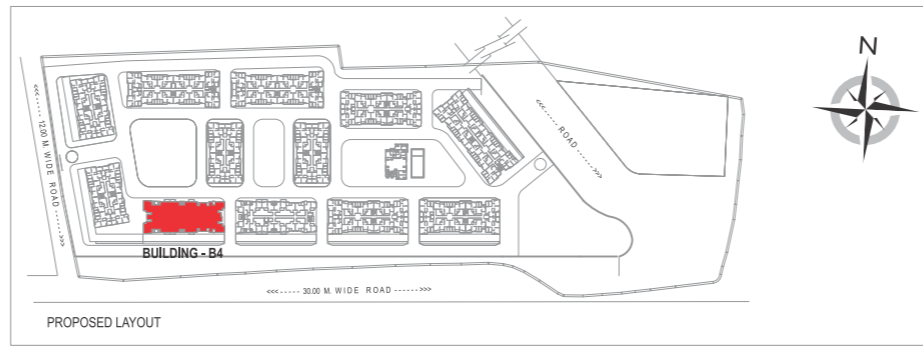
FLAT NO.	FLAT TYPE	CARPET AREA		EXCLUSIVE ENCLOSED BALCONY		EXCLUSIVE DRY TERRACE		EXCLUSIVE TERRACE		GROSS USABLE AREA	
		SQ.M.	SQ.FT.	SQ.M.	SQ.FT.	SQ.M.	SQ.FT.	SQ.M.	SQ.FT.	SQ.M.	SQ.FT.
108, 308, 508, 708, 908, 1108	1BHK	21.41	230.46	3.85	41.44	0.00	0.00	2.41	25.94	27.67	297.84
109, 309, 509, 709, 909, 1109	1HK	18.54	199.56	0.00	0.00	1.58	17.01	0.00	0.00	20.12	216.57
110, 310, 510, 710, 910, 1110	1HK	18.72	201.50	0.00	0.00	1.58	17.01	0.00	0.00	20.30	218.51
111, 311, 511, 711, 911, 1111	1BHK	25.13	270.50	0.00	0.00	0.00	0.00	3.44	37.03	28.57	307.53
112, 312, 512, 712, 912, 1112	1BHK	25.13	270.50	0.00	0.00	0.00	0.00	3.47	37.35	28.60	307.85
113, 313, 513, 713, 913, 1113	1BHK	25.10	270.18	0.00	0.00	0.00	0.00	3.47	37.35	28.57	307.53
114, 314, 514, 714, 914, 1114	2BHK	30.69	330.35	7.41	79.76	0.00	0.00	2.73	29.39	40.83	439.49

Note: 1. ** Carpet Area is calculated according to RERA norms, Excluding Plaster thickness & Including Cupboard Area. 2. Plaster Thickness are considered as Internal Plaster 10mm & External Plaster 20mm 3. All the areas other than carpet area are mentioned for Illustration purpose only. 4. Sale of apartment is on carpet area only. 5. *Gross usable area = FLAT CARPET AREA + ENCLOSED BALCONY + TERRACE AREA + DRY TERRACE. 6. All Dimensions mentioned are for Unfinished surface & Including Enclosed Balcony.

PHASE - II BUILDING - B4

2nd, 4th, 6th & 10th Floor Plan

RERA REGISTRATION
NO. P52100001788



mantra
Residency



FLAT NO.	FLAT TYPE	CARPET AREA		EXCLUSIVE ENCLOSED BALCONY		EXCLUSIVE DRY TERRACE		EXCLUSIVE TERRACE		GROSS USABLE AREA	
		SQ.M.	SQ.FT.	SQ.M.	SQ.FT.	SQ.M.	SQ.FT.	SQ.M.	SQ.FT.	SQ.M.	SQ.FT.
201, 401, 601, 1001	2BHK	30.89	332.50	7.41	79.76	0.00	0.00	2.70	29.06	41.00	441.32
202, 402, 602, 1002	1BHK	22.10	237.88	2.97	31.97	0.00	0.00	2.23	24.00	27.30	293.86
203, 403, 603, 1003	1BHK	22.14	238.31	2.96	31.86	0.00	0.00	2.26	24.33	27.36	294.50
204, 404, 604, 1004	1BHK	22.17	238.64	2.95	31.75	0.00	0.00	2.26	24.33	27.38	294.72
205, 405, 605, 1005	1HK	18.72	201.50	0.00	0.00	1.58	17.01	0.00	0.00	20.30	218.51
206, 406, 606, 1006	1HK	18.54	199.56	0.00	0.00	1.58	17.01	0.00	0.00	20.12	216.57
207, 407, 607, 1007	1BHK	21.01	226.15	3.85	41.44	0.00	0.00	0.00	0.00	24.86	267.59

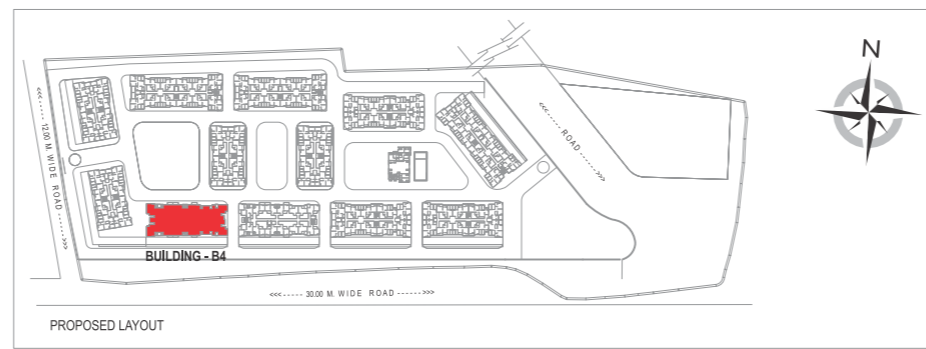
FLAT NO.	FLAT TYPE	CARPET AREA		EXCLUSIVE ENCLOSED BALCONY		EXCLUSIVE DRY TERRACE		EXCLUSIVE TERRACE		GROSS USABLE AREA	
		SQ.M.	SQ.FT.	SQ.M.	SQ.FT.	SQ.M.	SQ.FT.	SQ.M.	SQ.FT.	SQ.M.	SQ.FT.
208, 408, 608, 1008	1BHK	21.01	226.15	3.85	41.44	0.00	0.00	0.00	0.00	24.86	267.59
209, 409, 609, 1009	1HK	18.54	199.56	0.00	0.00	1.58	17.01	0.00	0.00	20.12	216.57
210, 410, 610, 1010	1HK	18.72	201.50	0.00	0.00	1.58	17.01	0.00	0.00	20.30	218.51
211, 411, 611, 1011	1BHK	22.17	238.64	2.95	31.75	0.00	0.00	2.26	24.33	27.38	294.72
212, 412, 612, 1012	1BHK	22.14	238.31	2.96	31.86	0.00	0.00	2.26	24.33	27.36	294.50
213, 413, 613, 1013	1BHK	22.10	237.88	2.97	31.97	0.00	0.00	2.23	24.00	27.30	293.86
214, 414, 614, 1014	2BHK	30.89	332.50	7.41	79.76	0.00	0.00	2.70	29.06	41.00	441.32

Note: 1. ** Carpet Area is calculated according to RERA norms, Excluding Plaster thickness & Including Cupboard Area. 2. Plaster Thickness are considered as Internal Plaster 10mm & External Plaster 20mm 3. All the areas other than carpet area are mentioned for Illustration purpose only. 4. Sale of apartment is on carpet area only. 5.*Gross usable area = FLAT CARPET AREA + ENCLOSED BALCONY + TERRACE AREA + DRY TERRACE. 6. All Dimensions mentioned are for Unfinished surface & Including Enclosed Balcony.

PHASE - II BUILDING - B4

8th Floor Plan

RERA REGISTRATION
NO. P52100001788



mantra
Residency



FLAT NO.	FLAT TYPE	CARPET AREA		EXCLUSIVE ENCLOSED BALCONY		EXCLUSIVE DRY TERRACE		EXCLUSIVE TERRACE		GROSS USABLE AREA	
		SQ.M.	SQ.FT.	SQ.M.	SQ.FT.	SQ.M.	SQ.FT.	SQ.M.	SQ.FT.	SQ.M.	SQ.FT.
801	2BHK	30.89	332.50	7.41	79.76	0.00	0.00	2.70	29.06	41.00	441.32
802	1BHK	22.10	237.88	2.97	31.97	0.00	0.00	2.23	24.00	27.30	293.86
803	1BHK	22.14	238.31	2.96	31.86	0.00	0.00	2.26	24.33	27.36	294.50
804	1BHK	22.17	238.64	2.95	31.75	0.00	0.00	2.26	24.33	27.38	294.72
805 (REFUGE AREA)	1HK	0.00	0.00	0.00	0.00	0.00	0.00	0.00	0.00	0.00	0.00
806 (REFUGE AREA)	1HK	0.00	0.00	0.00	0.00	0.00	0.00	0.00	0.00	0.00	0.00
807	1BHK	21.01	226.15	3.85	41.44	0.00	0.00	0.00	0.00	24.86	267.59

FLAT NO.	FLAT TYPE	CARPET AREA		EXCLUSIVE ENCLOSED BALCONY		EXCLUSIVE DRY TERRACE		EXCLUSIVE TERRACE		GROSS USABLE AREA	
		SQ.M.	SQ.FT.	SQ.M.	SQ.FT.	SQ.M.	SQ.FT.	SQ.M.	SQ.FT.	SQ.M.	SQ.FT.
808	1BHK	21.01	226.15	3.85	41.44	0.00	0.00	0.00	0.00	24.86	267.59
809	1HK	18.54	199.56	0.00	0.00	1.58	17.01	0.00	0.00	20.12	216.57
810	1HK	18.72	201.50	0.00	0.00	1.58	17.01	0.00	0.00	20.30	218.51
811	1BHK	22.17	238.64	2.95	31.75	0.00	0.00	2.26	24.33	27.38	294.72
812	1BHK	22.14	238.31	2.96	31.86	0.00	0.00	2.26	24.33	27.36	294.50
813	1BHK	22.10	237.88	2.97	31.97	0.00	0.00	2.23	24.00	27.30	293.86
814	2BHK	30.89	332.50	7.41	79.76	0.00	0.00	2.70	29.06	41.00	441.32


Note: 1. ** Carpet Area is calculated according to RERA norms, Excluding Plaster thickness & Including Cupboard Area. 2. Plaster Thickness are considered as Internal Plaster 10mm & External Plaster 20mm. 3. All the areas other than carpet area are mentioned for illustration purpose only. 4. Sale of apartment is on carpet area only. 5. *Gross usable area = FLAT CARPET AREA + ENCLOSED BALCONY + TERRACE AREA + DRY TERRACE. 6. All Dimensions mentioned are for Unfinished surface & Including Enclosed Balcony.

mantra Residency



KEY DISTANCES

- Chakan MIDC Phase 3: 0.5 kms.
- Talawade IT Park: 7 kms.
- Mercedes Benz: 3 kms.
- Kidzee: 8 kms.
- HDFC Bank: 0.2 kms
- Samarth Hospital, Talawade: 6.5 kms.

 **Site Address:** Gat No 01, Besides Volkswagen, Chakan MIDC, Nighoje, Pune.
GPS Coordinates: 18.727297,73.81686

*Map not to scale



The project has been registered via MahaRERA registration numbers: P52100001165, P52100001788, P52100001368, P52100001688 and is available on the website <https://maharera.mahaonline.gov.in/> under registered projects.



Mantra Properties

T4-T5, Metropole Building - 3rd Floor, Next to INOX Multiplex, Above Gajalee Restaurant, Bund Garden Road, Pune - 411 001.

T: **7620 70 70 70** | W: www.mantraproperties.in