

OLIVIA

A WORLD WITHIN

◆ *Project MAHA RERA Registration Number :- P51800003168* ◆

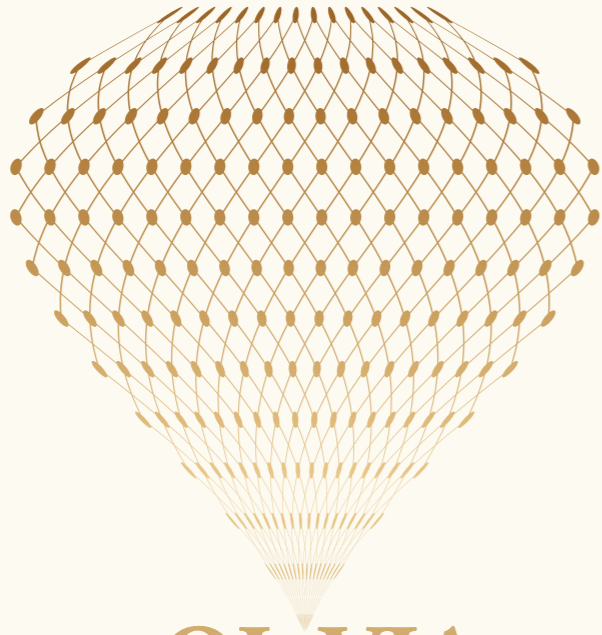
Available at <https://maharera.mahaonline.gov.in>

*Welcome
to the Nahar Family!*



Actual photo of Nahar's Amrit Shakti

PRESENTING



OLIVIA
A WORLD WITHIN

EXCLUSIVE 2 BEDROOM APARTMENT TOWER WITH
A LIFESTYLE THAT'S FULFILLING IN EVERY ASPECT

*Experience the harmony of a premium lifestyle
with a luxurious location*

Opulence within Reach

Olivia is a part of Nahar's Amrit Shakti, an award-winning township spread across 125 acres of lush green landscape, located in Chandivali, Andheri East, Mumbai. This multi-storey tower comprises of exclusive 2BHK apartments with a lifestyle that's fulfilling in every aspect.

With a whole world within, why look beyond?

Better Health | Better Comfort | Better Safety | Better Living

OLIVIA FEATURES INCLUDES :

- Grand Double Height Air Conditioned Entrance Lobby
- Adequate Car Parking
- Landscaped Stilt Floor With Kids Play Area and Themed Sitting Area
- Overlooking Club Nectarfield

* Future development include proposed school / commercial space at ground floor and 1st level podium of Olivia subject to approval.



Actual Photo of Olivia Lobby

Everyday Happiness within Reach

The aim of Nahar Group is to create a healthy and holistic lifestyle. Hence residents need not move out of this self-sufficient township spread over approx. 125 acres

Break a sweat at the jogging track or watch your child explore their passion at the skating rink. There's something for everyone.

Amenities:

The township is a perfect blend of lush and plush living. It has one of the largest Vehicle-free Podium Garden, which is a unique and splendid feature, multiple Azure Water Bodies and a fascinating Sculpture Garden.

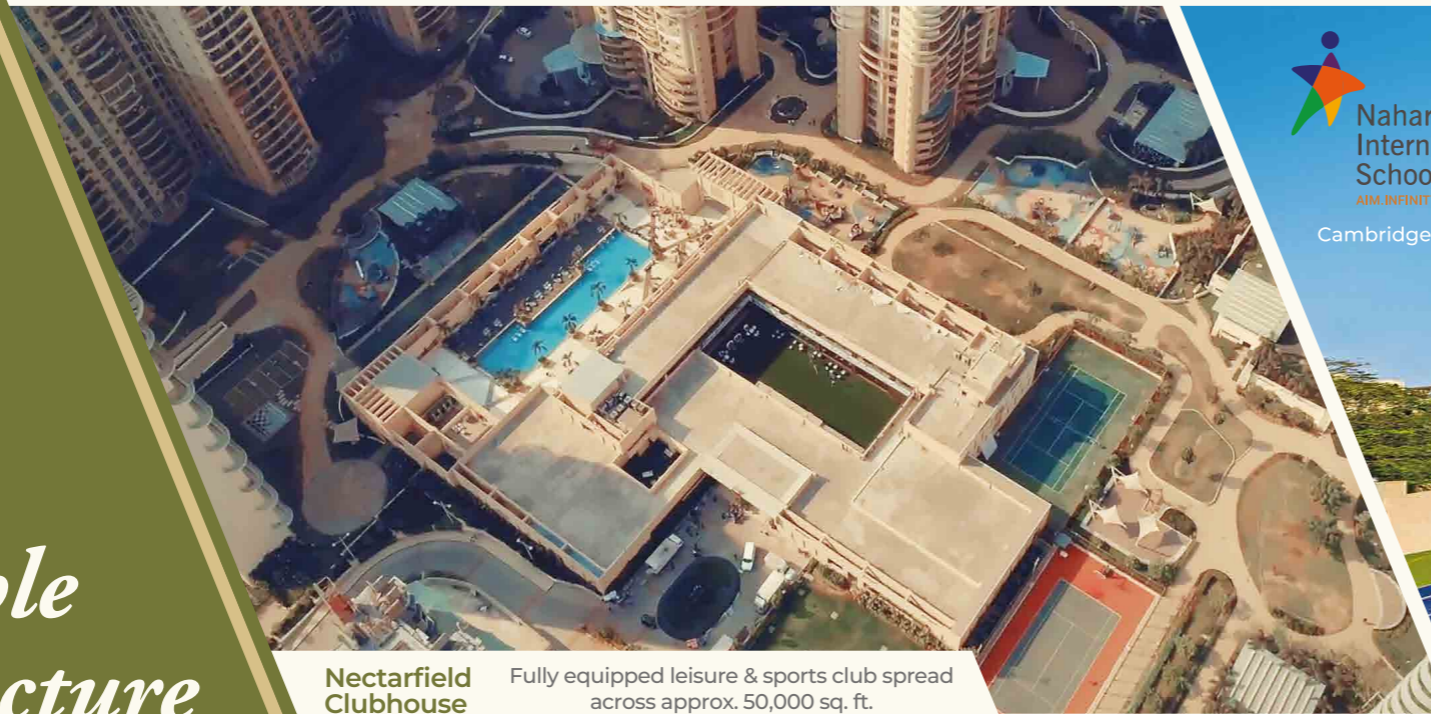
Innumerable amenities to enjoy include:

- Skating Rink
- Life-size Chess Board and Snakes & Ladders
- Multiple Dedicated Kids' Play Areas with Kompan Turf and Danish Play Equipment
- Mural Garden
- Jogging Track
- Amphitheatre
- Reflexo Path
and more...



Aerial View Actual Photo of Podium Garden of Nahar's Amrit Shakti

Impeccable Infrastructure



Nectarfield Clubhouse Fully equipped leisure & sports club spread across approx. 50,000 sq. ft.


Nahar International School
 AIM INFINITY
 Cambridge affiliated



94,000 SFT Campus | 160+ Faculty | MAC Labs | SMART Boards



Nahar Medical Centre a state-of-the-art facility | 20+ Specialities | 75+ Medical Professionals



Nahar Business Centre Walk To Work | State-of-the-art security | Business Cafe



Super Market Daily needs at a walking distance.

Nahar's Nectarfield

Nahar's Amrit Shakti is offering its residents a world class leisure and sports clubhouse- 'Nahar's Nectarfield'. This magnificent clubhouse is spread across an area of approx. 50,000 sq. ft.

Nahar's Nectarfield has 7 fully functional sports courts with professional standards facilities for :
Football (practice turf) | Basketball | Cricket (practice pitch) | Badminton | Squash | Tennis

The clubhouse also offers :
High-end gym | Swimming pool | Café Nectarfield | Kid's pool | Kid's play area-Hakuna Matata | Shiva's Unisex Salon and Spa | Suite Rooms | Business Lounge

Soon the residents will be able to enjoy the best at the multi-cuisine restaurants and host the most eventful days at two banquet facilities.

The most equipped Club Nectarfield is just a few steps away!

Kid's play area - Hakuna Matata



Actual photo

Shiva's Unisex Salon & Spa

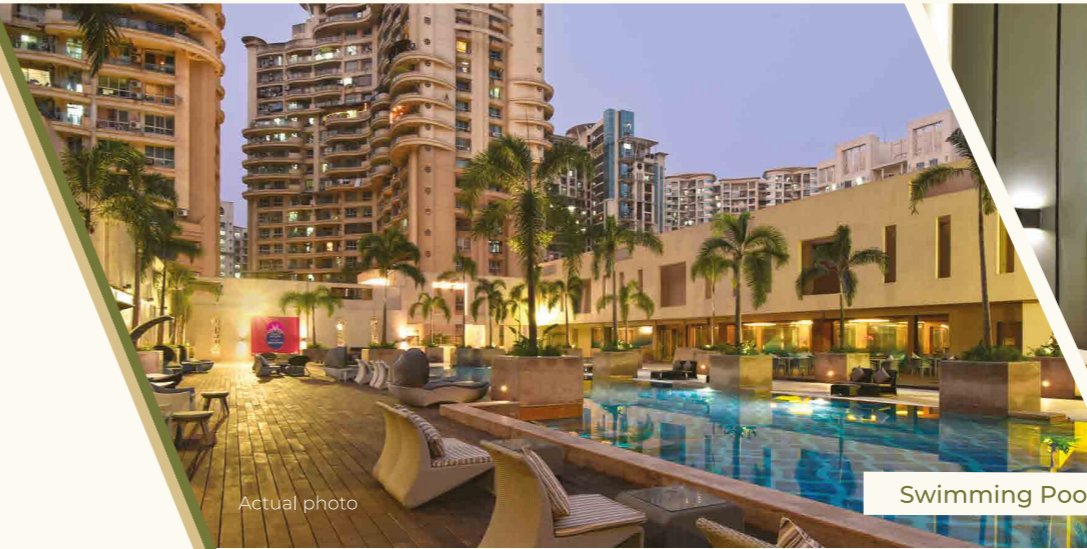


Actual photo

Multi-Cuisine Bar & Restaurant



Rendered Image



Actual photo

Swimming Pool



Actual photo

Suite Rooms



Rendered Image

Banquet Hall

NAHAR'S
Nectarfield
LEISURE & SPORTS CLUB
Let the games begin



Gymnasium



Basketball Court



Lawn Tennis Court



Badminton Court

Remarkable In-flat Amenities

- Large Sized Vitrified Tiles
- Branded Bathroom Fittings
- Designer Bathroom Walls With Mirrors
- Kitchen With SS Sink
- ISI Approved Branded Fittings and Fixtures
- Video Door Phones
- Aluminium Powder Coated Frame Window



Actual photo of the Show flat - Living Room



Master Bedroom



Bathroom



Guest Bedroom



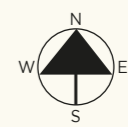
Kitchen

Laid to Perfection



This is one of the largest landscaped podium garden in India with water bodies, walkways and a children's recreation zone with the safest Danish play equipment.

- | | |
|------------------------|-----------------------|
| Lawns | Sculpture garden |
| Tennis court | Children's play area |
| Water features | Clubhouse |
| Parent's sit-out area | Open deck areas |
| Palm plaza | Half basketball court |
| Amphitheatre | Snakes and ladders |
| Vertical water feature | Chess pad |
| Reflexology path | Stepping stones |
| Skating rinks | Grand walkways |



Sector Layout Map

1 sq. meter = 10.764 sq. ft.

Note : All the specifications, designs, facilities, dimensions, etc are subject to approval of the respective authorities. The developer reserves the right to change, revise and make modifications, additions, omissions and alterations in the scheme as a whole or in a part thereof at their sole discretion without any notice or any obligation as required by the authorities.

TYPE	FLAT SERIES NO.	SIDE	RERA CARPET AREA
A	1, 6	Hill Side	658 SQFT / 61.13 SQMTR
B	2	Club Nectarfield	665 SQFT / 61.78 SQMTR
C	3	Club Nectarfield	653 SQFT / 60.67 SQMTR

↑ Towards Club Nectarfield



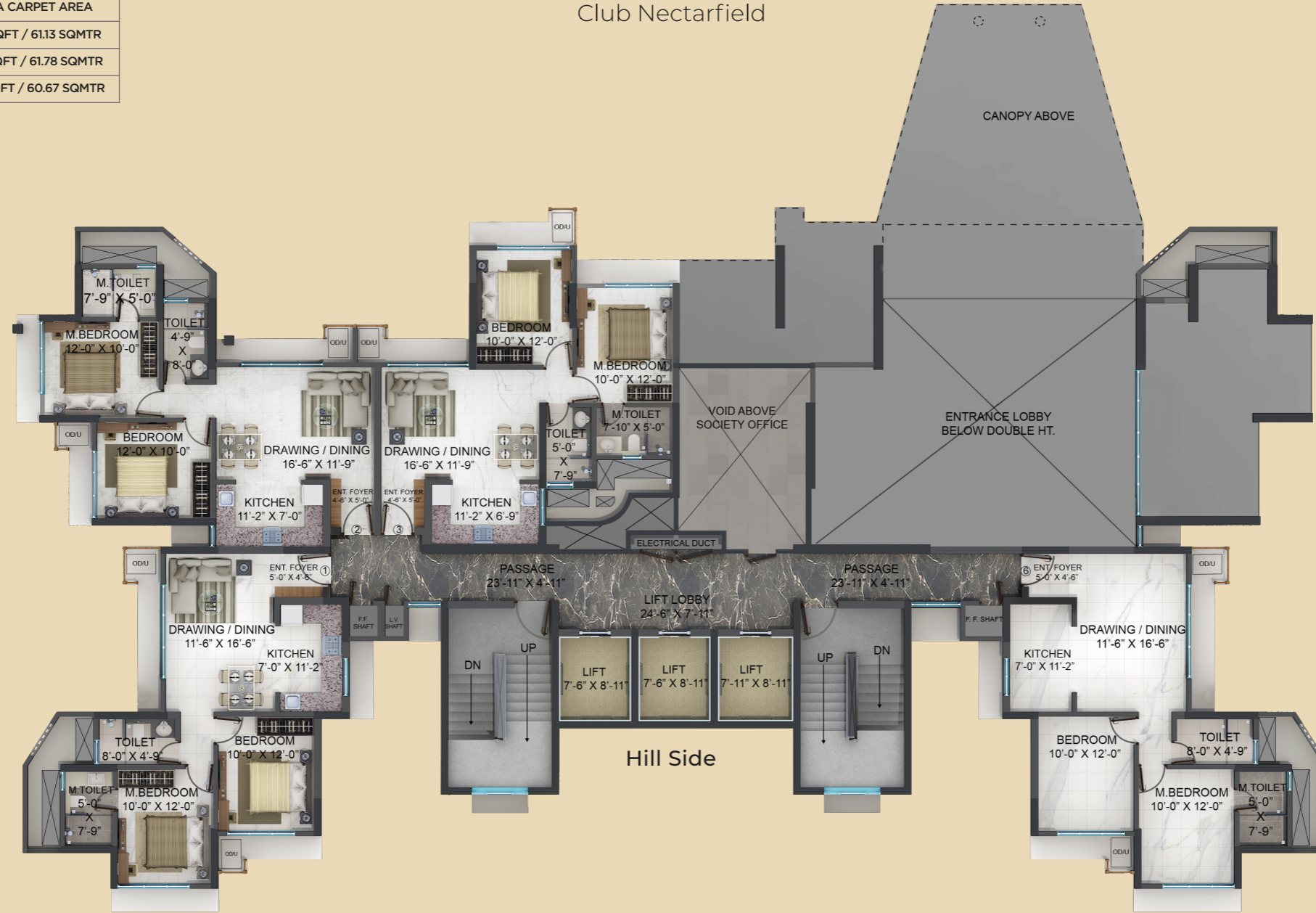
Hill Side

Second Level Podium Plan

Note : All the specifications, designs, facilities, dimensions, etc are subject to approval of the respective authorities. The developer reserves the right to change, revise and make modifications, additions, omissions and alterations in the scheme as a whole or in a part thereof at their sole discretion without any notice or any obligation as required by the authorities. Dimension tolerance $\pm 5\%$ to be considered.

TYPE	FLAT SERIES NO.	SIDE	RERA CARPET AREA
A	1, 6	Hill Side	658 SQFT / 61.13 SQMTR
B	2	Club Nectarfield	665 SQFT / 61.78 SQMTR
C	3	Club Nectarfield	653 SQFT / 60.67 SQMTR

Club Nectarfield

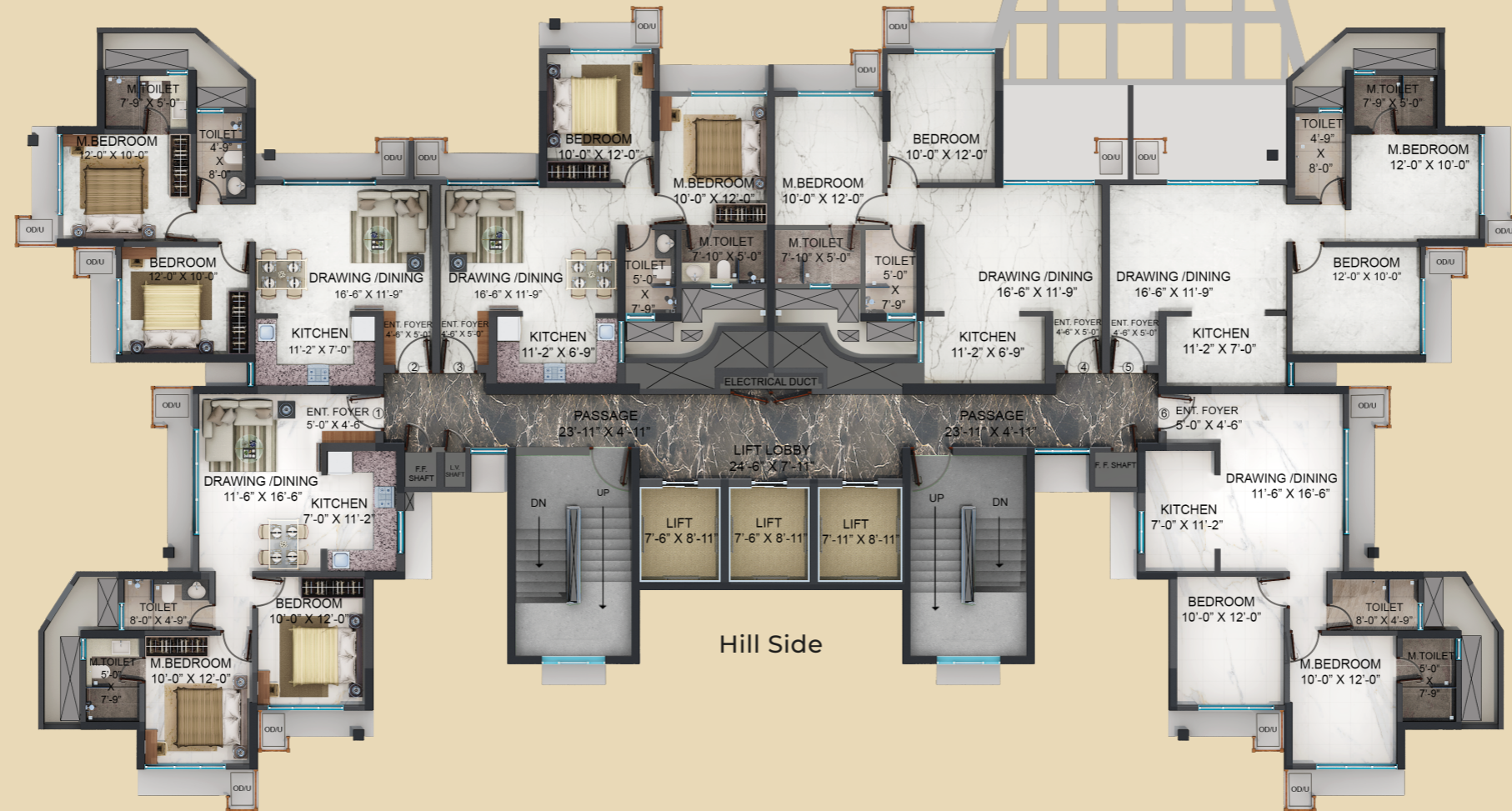


1st Floor Plan

Note : All the specifications, designs, facilities, dimensions, etc are subject to approval of the respective authorities. The developer reserves the right to change, revise and make modifications, additions, omissions and alterations in the scheme as a whole or in a part thereof at their sole discretion without any notice or any obligation as required by the authorities. Dimension tolerance ± 5% to be considered.

TYPE	FLAT SERIES NO.	SIDE	RERA CARPET AREA
A	1, 6	Hill Side	658 SQFT / 61.13 SQMTR
B	2, 5	Club Nectarfield	665 SQFT / 61.78 SQMTR
C	3, 4	Club Nectarfield	653 SQFT / 60.67 SQMTR

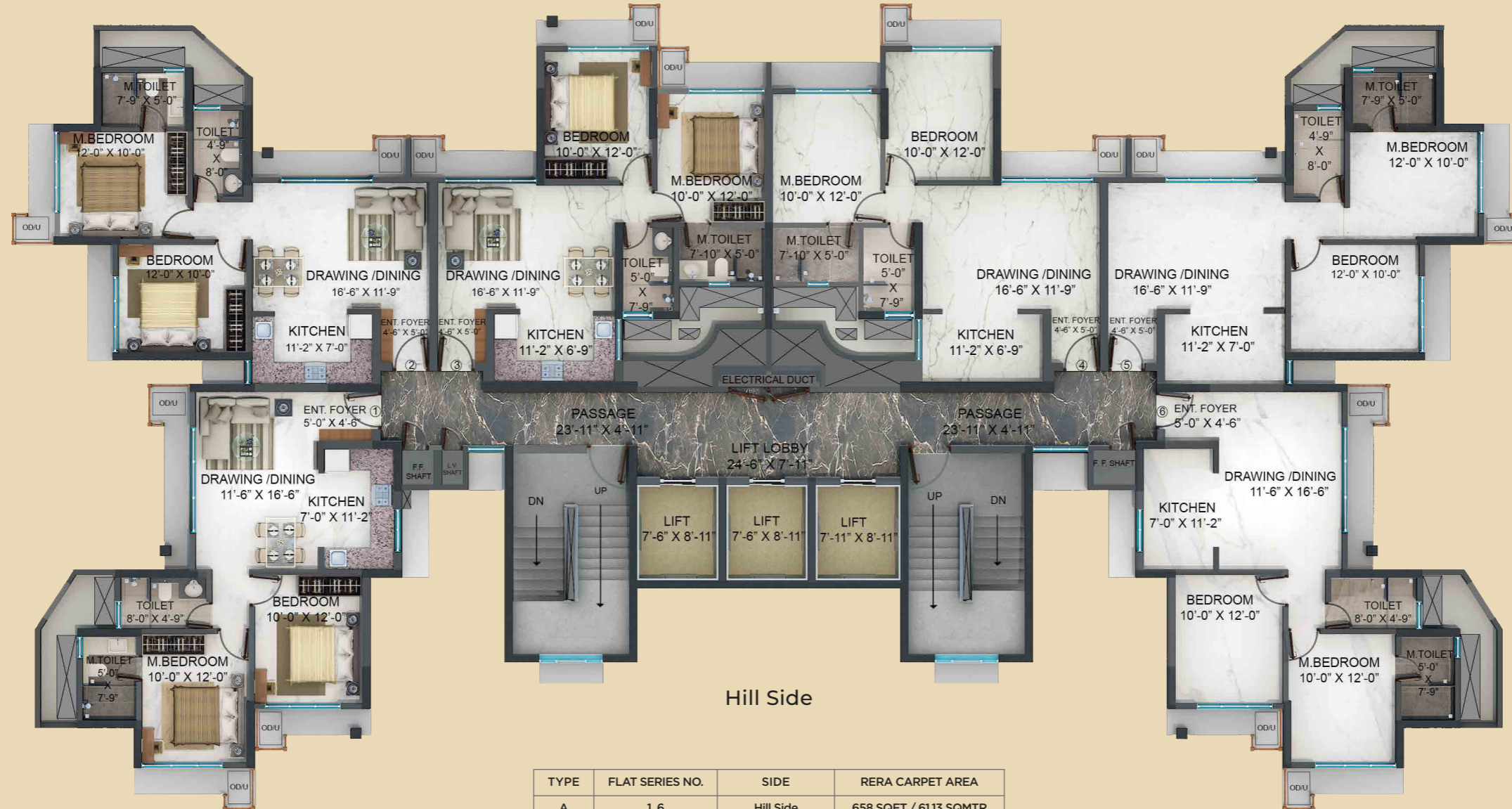
Club Nectarfield



2nd Floor Plan

Note : All the specifications, designs, facilities, dimensions, etc are subject to approval of the respective authorities. The developer reserves the right to change, revise and make modifications, additions, omissions and alterations in the scheme as a whole or in a part thereof at their sole discretion without any notice or any obligation as required by the authorities. Dimension tolerance ± 5% to be considered.

Club Nectarfield

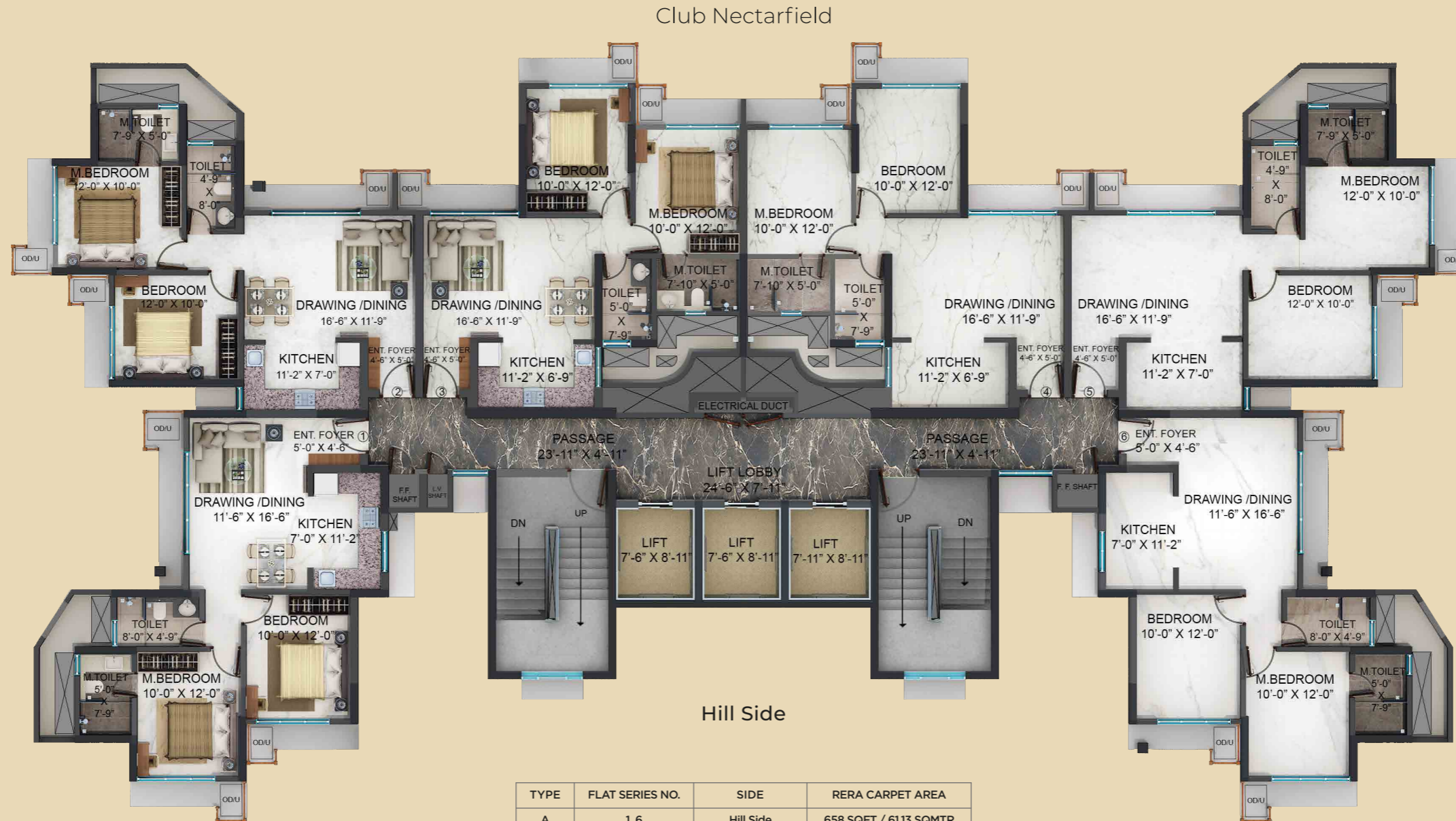


Hill Side

TYPE	FLAT SERIES NO.	SIDE	RERA CARPET AREA
A	1, 6	Hill Side	658 SQFT / 61.13 SQMTR
B	2, 5	Club Nectarfield	665 SQFT / 61.78 SQMTR
C	3, 4	Club Nectarfield	653 SQFT / 60.67 SQMTR

3rd Floor Plan

Note : All the specifications, designs, facilities, dimensions, etc are subject to approval of the respective authorities. The developer reserves the right to change, revise and make modifications, additions, omissions and alterations in the scheme as a whole or in a part thereof at their sole discretion without any notice or any obligation as required by the authorities. Dimension tolerance ± 5% to be considered.

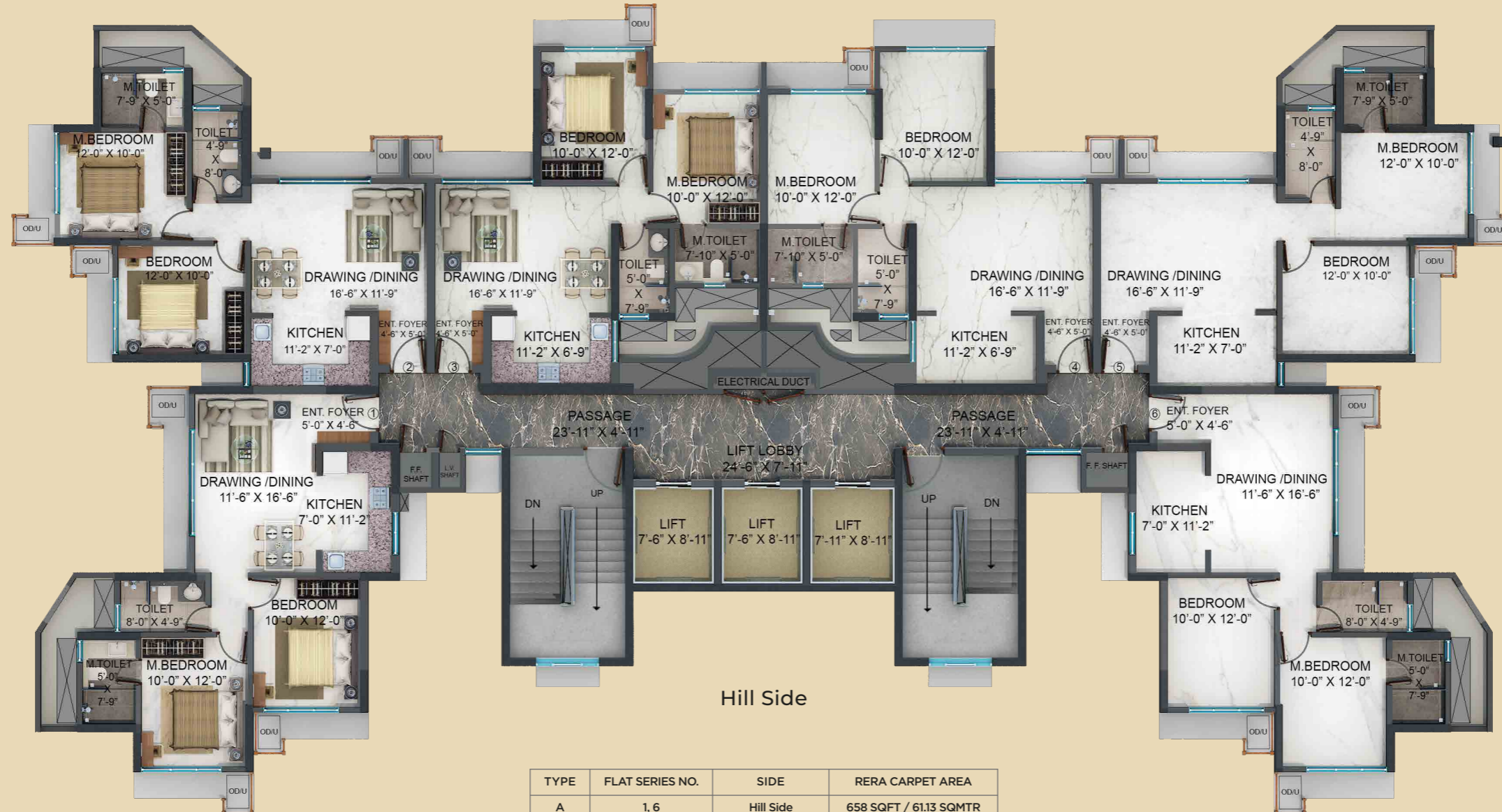


TYPE	FLAT SERIES NO.	SIDE	RERA CARPET AREA
A	1, 6	Hill Side	658 SQFT / 61.13 SQMTR
B	2, 5	Club Nectarfield	665 SQFT / 61.78 SQMTR
C	3, 4	Club Nectarfield	653 SQFT / 60.67 SQMTR

4th, 8th Floor Plan

Note : All the specifications, designs, facilities, dimensions, etc are subject to approval of the respective authorities. The developer reserves the right to change, revise and make modifications, additions, omissions and alterations in the scheme as a whole or in a part thereof at their sole discretion without any notice or any obligation as required by the authorities. Dimension tolerance ± 5% to be considered.

Club Nectarfield

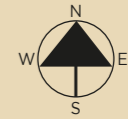
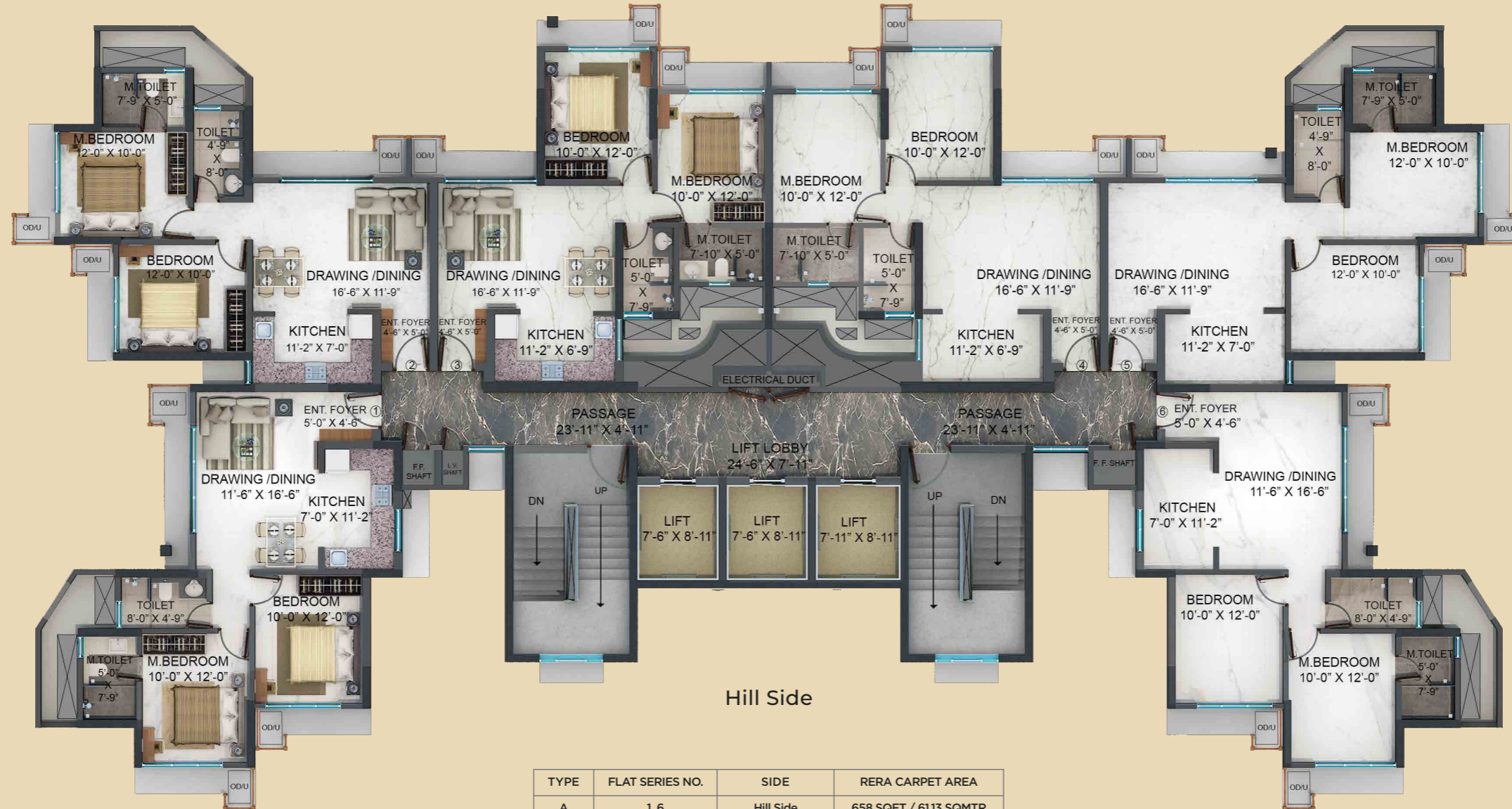


TYPE	FLAT SERIES NO.	SIDE	RERA CARPET AREA
A	1, 6	Hill Side	658 SQFT / 61.13 SQMTR
B	2, 5	Club Nectarfield	665 SQFT / 61.78 SQMTR
C	3, 4	Club Nectarfield	653 SQFT / 60.67 SQMTR

5th, 9th Floor Plan

Note : All the specifications, designs, facilities, dimensions, etc are subject to approval of the respective authorities. The developer reserves the right to change, revise and make modifications, additions, omissions and alterations in the scheme as a whole or in a part thereof at their sole discretion without any notice or any obligation as required by the authorities. Dimension tolerance ± 5% to be considered.

Club Nectarfield

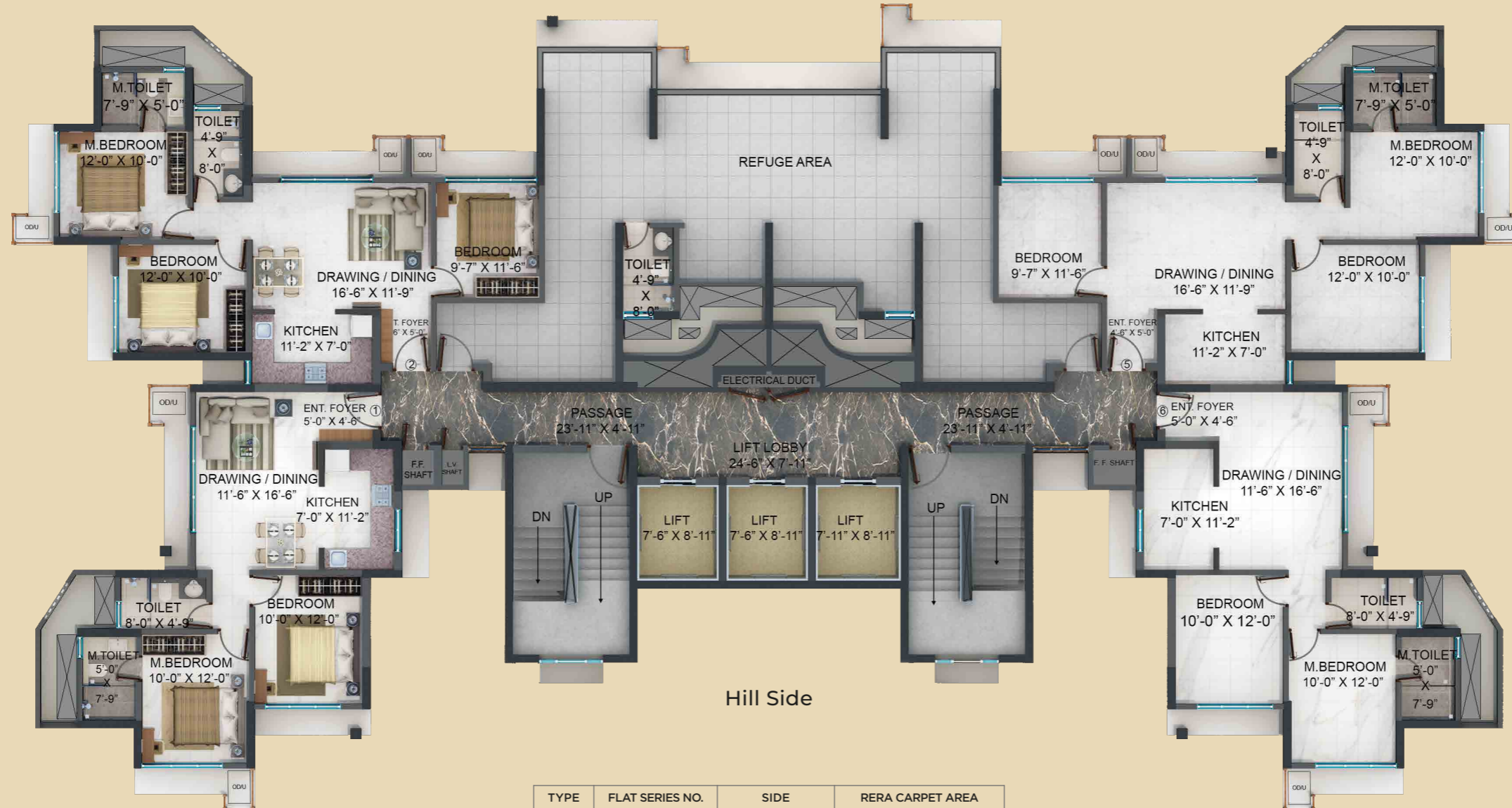


TYPE	FLAT SERIES NO.	SIDE	RERA CARPET AREA
A	1, 6	Hill Side	658 SQFT / 61.13 SQMTR
B	2, 5	Club Nectarfield	665 SQFT / 61.78 SQMTR
C	3, 4	Club Nectarfield	653 SQFT / 60.67 SQMTR

6th Floor Plan

Note : All the specifications, designs, facilities, dimensions, etc are subject to approval of the respective authorities. The developer reserves the right to change, revise and make modifications, additions, omissions and alterations in the scheme as a whole or in a part thereof at their sole discretion without any notice or any obligation as required by the authorities. Dimension tolerance ± 5% to be considered.

Club Nectarfield



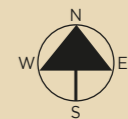
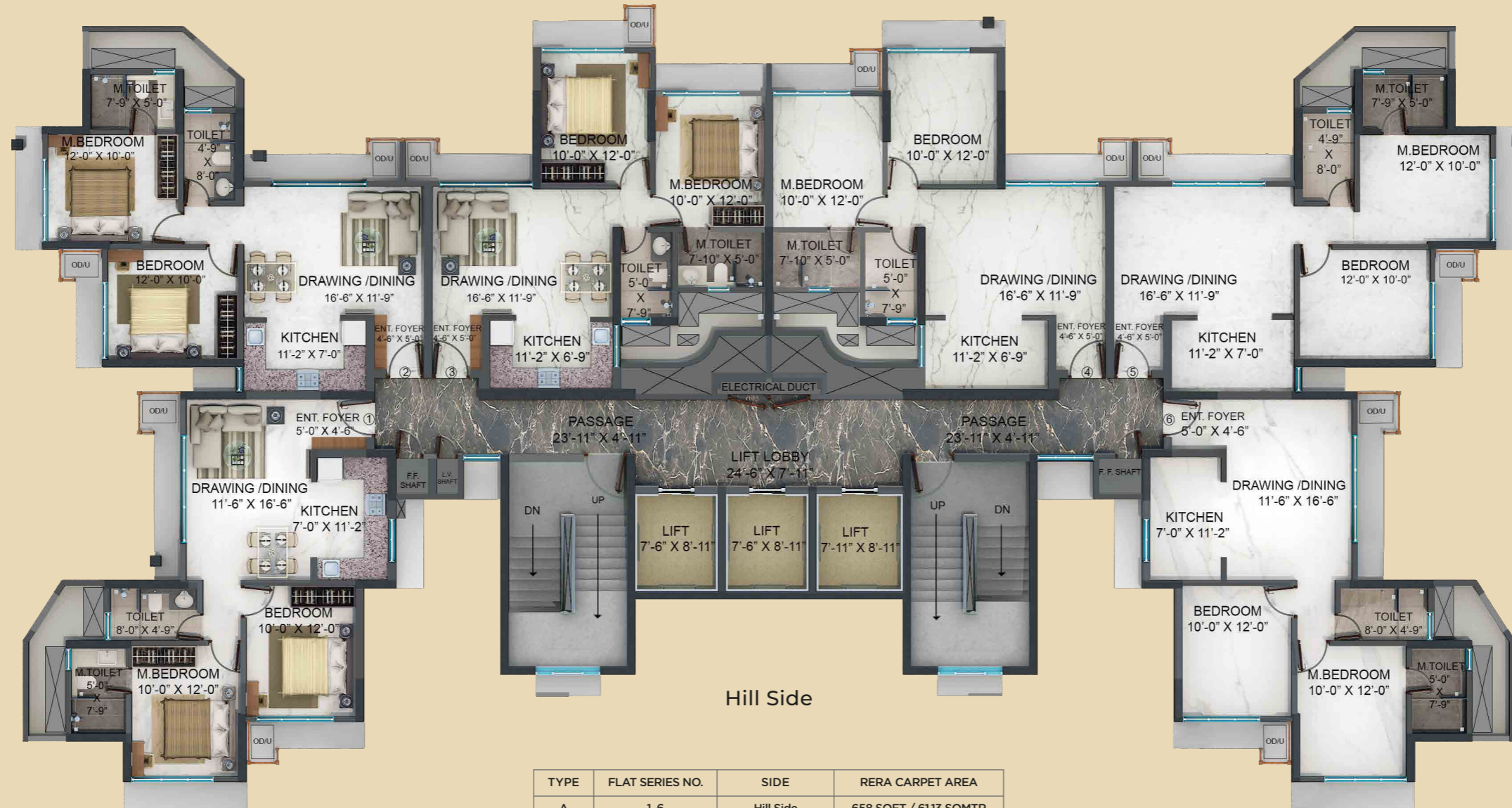
Hill Side

TYPE	FLAT SERIES NO.	SIDE	RERA CARPET AREA
A	1, 6	Hill Side	658 SQFT / 61.13 SQMTR
B	2, 5	Club Nectarfield	783 SQFT / 72.74 SQMTR

7th Refuge Floor Plan

Note : All the specifications, designs, facilities, dimensions, etc are subject to approval of the respective authorities. The developer reserves the right to change, revise and make modifications, additions, omissions and alterations in the scheme as a whole or in a part thereof at their sole discretion without any notice or any obligation as required by the authorities. Dimension tolerance ± 5% to be considered.

Club Nectarfield






TYPE	FLAT SERIES NO.	SIDE	RERA CARPET AREA
A	1, 6	Hill Side	658 SQFT / 61.13 SQMTR
B	2, 5	Club Nectarfield	665 SQFT / 61.78 SQMTR
C	3, 4	Club Nectarfield	653 SQFT / 60.67 SQMTR

10th - 13th Floor Plan

Note : All the specifications, designs, facilities, dimensions, etc are subject to approval of the respective authorities. The developer reserves the right to change, revise and make modifications, additions, omissions and alterations in the scheme as a whole or in a part thereof at their sole discretion without any notice or any obligation as required by the authorities. Dimension tolerance +/- 5% to be considered. Elevation features may vary.

Seamless Connectivity

A paramount locational feature is the seamless connectivity with Eastern and Western Express Highway, Domestic and International Airport, Saki Naka Metro Station, Andheri and Ghatkopar Railway Station.

 <p>International Airport 5 kms</p>	 <p>Domestic Airport 8.4 kms</p>	 <p>Eastern Express Highway 7.3 kms</p>	 <p>Western Express Highway 5.6 kms</p>
 <p>Saki Naka Metro Station 2.2 kms</p>	 <p>Powai Lake, JVL 2.5 kms</p>	 <p>Andheri Railway Station 6.9 kms</p>	 <p>Ghatkopar Railway Station 3.9 kms</p>



About Nahar Group

Nahar Group is a premier real estate developer headquartered in Mumbai. Established in 1973, the Group has developed over 15 million square feet of prime real estate projects, making it one of the names to reckon with. The Group has proved its proficiency in developing Integrated Townships, Lifestyle Residences, Industrial and Commercial space. It has also established itself in the field of education with Nahar International School, which is affiliated to Cambridge School network, and in the healthcare segment by establishing Nahar Medical Centre, enabling access to over 4,000 families with technically advanced medical and diagnostic facilities. Furthermore to provide affordable healthcare facilities to the masses, especially the unprivileged, the Group has opened an 82 bed state-of-the-art multispeciality hospital in Bhinmal, Rajasthan.

Nahar Group's flagship project Nahar's Amrit Shakti is an award-winning integrated township located in Chandivali, Andheri East, Mumbai. The township boasts of over 40 high-rise towers across 125 acres of lush green landscape. More than 4,000 happy families including NRIs have made Nahar's Amrit Shakti as their permanent address. With an aim to provide the finest luxury experience, Nahar's Amrit Shakti is offering its residents a world class leisure and sports clubhouse- 'Nahar's Nectarfield', spread across an area of approx. 50,000 sq. ft. The infrastructure created around Nahar's Amrit Shakti comprises of Nahar International School, Nahar Medical Center, Nahar Business Center, Jain Temple, Supermarket and Shopping Avenue.

Spearheaded by the visionary Mr. Sukhraj Nahar, Founder-Chairman and Managing Director and Ms. Manju Yagnik, Vice Chairperson, Nahar Group is recognized for its quality, reliability and professional approach that has earned prestigious awards for its domain expertise, management practices, corporate governance and corporate social responsibilities.

Management



“Actualization is the distinguishing factor between one who has a vision and is a visionary”

Mr. Sukhraj Nahar
Founder, Chairman and Managing Director

As Chairman and Managing Director, Mr. Sukhraj Nahar is at the helm of Nahar Group. A true entrepreneur in his own right. It is his vision that has turned the wishes of millions into reality, as he embarked on the journey with a clear vision to create a team of people who shared the same sense of purpose. A penchant for perfection, quality, and on-time delivery are values that are today synonymous with the Nahar Group. He has earnestly dedicated his every effort to building a rising momentum that has earned him several laurels both within the corporate segment as a business magnate and as a philanthropist.



“Business acumen is about backing a vision with strategic planning”

Ms. Manju Yagnik
Vice Chairperson

Manju Yagnik has been associated with the Nahar Group for over three decades, and is recognized as an industry icon for her thought leadership. Her core expertise lies in project planning, project development, and marketing strategies. Her burning passion to create unique land spaces, brilliant initiatives and understanding consumer behavior has made her into the person who she is today. Her dedication has resulted in Nahar Group winning several prestigious awards and accolades at national and international platforms as she is also associated with many industry bodies nationally such as NAREDCO, CREDAI-MCHI, FICCI & RICS.



NAHAR GROUP

EXPERIENCE EXCELLENCE
Since 1973



Directions to Olivia

SITE OFFICE

Chandivali Farm Road, Off Saki-Vihar Road, Near Chandivali Film Studio, Andheri (E), Mumbai-400072

Call : 93215 54221

Email : sales@nahargroup.co.in | www.nahargroup.co.in

Project MAHA RERA Registration Number :- P51800003168

Available at <https://maharera.mahaonline.gov.in>

Project Funded By

