



2, 3
BHK



SUMADHURA'S ASPIRE
AMBER
REAL VALUE HOMES. WHITEFIELD.

APNA GHAR. APNA AMBER.

RERA REGISTERED: PRM/KA/RERA/1251/446/PR/250222/004731/RERA.KARNATAKA.GOV.IN

THE WINGS OF CHANGE



Aspire series is symbolic of Sumadhura's desire to give wings to young Indians' dreams of owning a home. An increasing number of them are beginning to own homes on their own terms, eschewing rentals.



SUMADHURA VENTURE

AN EXTENSION OF A LEGACY.



The Sumadhura Group are proud developers, with a fast growing community of seven thousand happy families in eight million sq. ft of happy homes.

Twenty million sq. ft are currently under various stages of development.

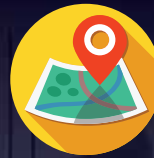


A DESIRE TO DELIVER WITHOUT COMPROMISE

MEETING THE YOUNG
ASPIRATION HEAD ON.

Aspire series of homes are designed to meet the aspiration and the non-compromise attitude of young India. The series strives to deliver real value affordable housing, for when it's about delivering a home, we never ever compromise on our four core values.

OUR CORE VALUES:



HAND-PICKED
LOCATIONS



THE BEST OF
AMENITIES



QUALITY OF
CONSTRUCTION



TIMELY
DELIVERY



AMB-R



AMBER



The second project of Aspire real value series, Amber is a collection of sweet homes in the heart of the booming IT belt of eastern Bengaluru.

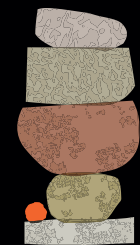
Tucked away clean, yet very close to all the buzz of life.

A prime, central location. Minutes away from all your needs: livelihood to pastime, education to healthcare. Just a stone's throw from EPIP and the gates of ITPB. Amber is close to malls, academic institutions and lot more.

Adjacent to the greenery of Atal Bihari Botanical Garden and right opposite Aurum.

Amber is well connected to the city through a criss-cross network of Namma Metro. It's your home, your world.

apna
ghar.
apna
amber.



**AN AMAZING
VALUE
FOR YOUR
LIFESTYLE.**

UPSCALE YET
AFFORDABLE.



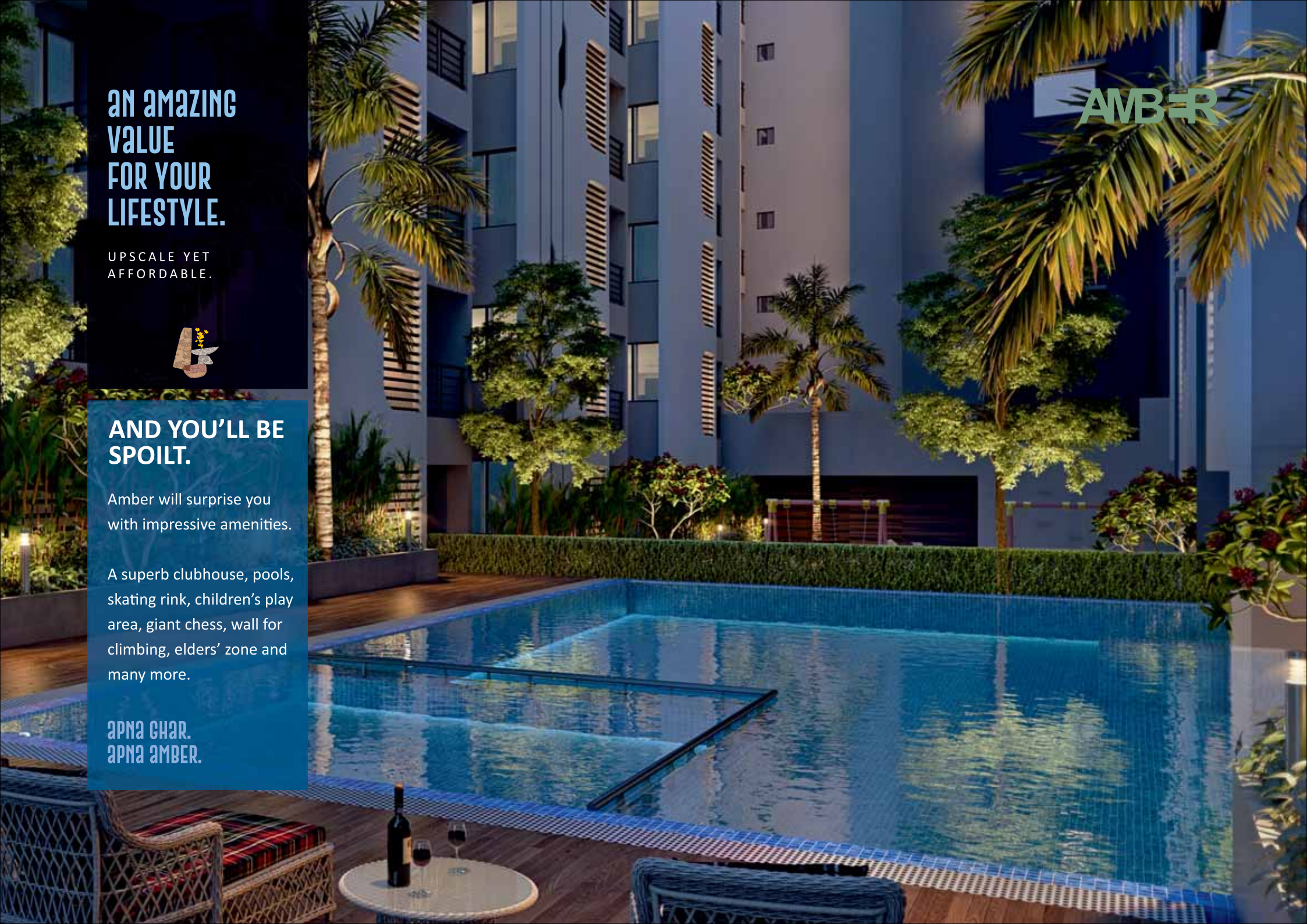
**AND YOU'LL BE
SPOILT.**

Amber will surprise you
with impressive amenities.

A superb clubhouse, pools,
skating rink, children's play
area, giant chess, wall for
climbing, elders' zone and
many more.

**APNA GHAR.
APNA AMBER.**

AMBER



AMAZING VALUE FOR MONEY

PERFECT HAPPY HOMES
FOR AMBITIOUS YOUNG
INDIANS TO SETTLE IN.



Apna Ghar.

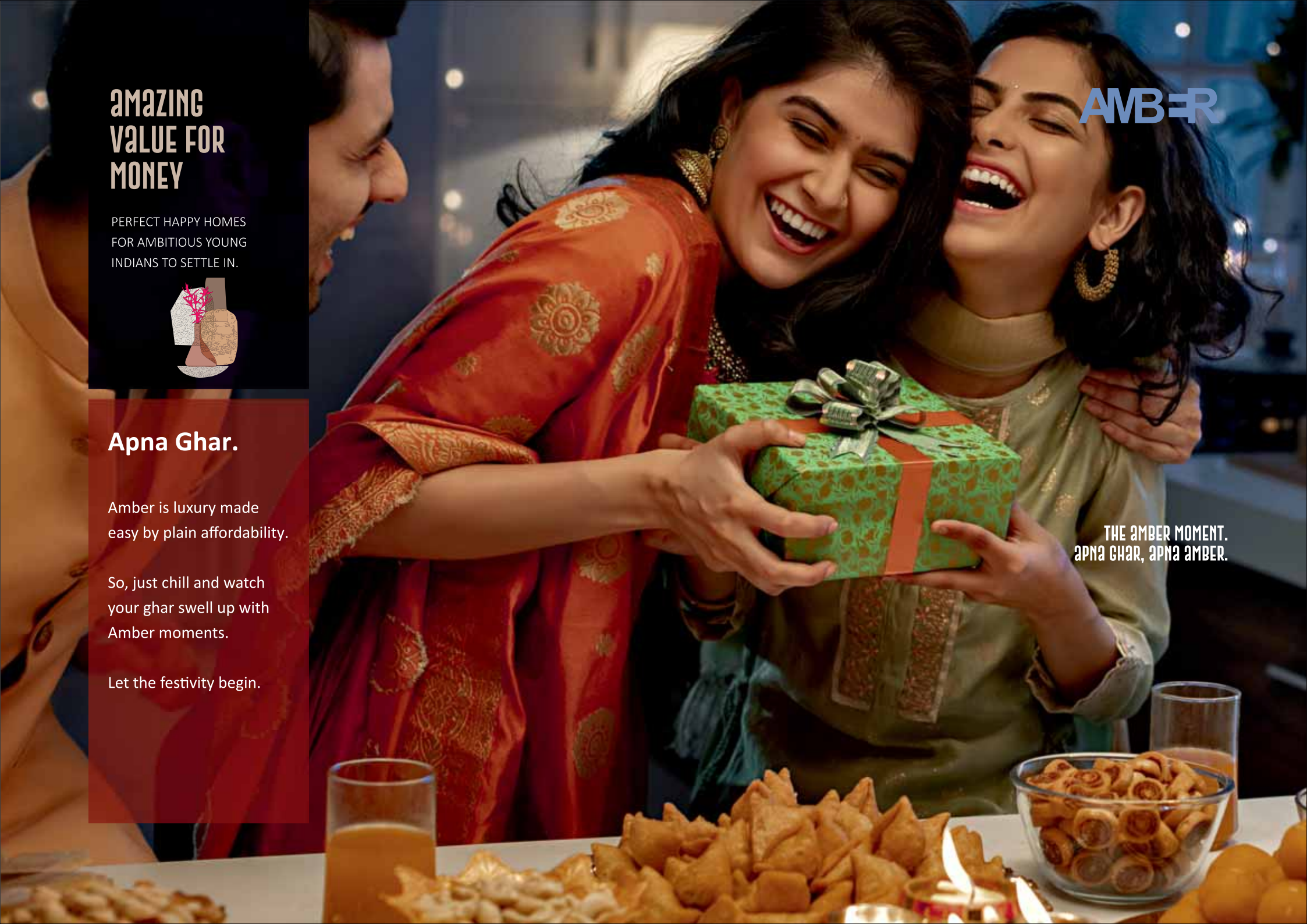
Amber is luxury made
easy by plain affordability.

So, just chill and watch
your ghar swell up with
Amber moments.

Let the festivity begin.

AMBER

THE AMBER MOMENT.
APNA GHAR, APNA AMBER.



**AMBERING.
A LIFESTYLE,
YOUR WAY.**

RELAXING. PEACEFUL.



**A TIME TO
WORK.
A TIME TO
PLAY.**

You not only let Aspire Amber reflect your individualistic lifestyle, it is also where you let your hair down and find yourself.

Your Amber is your haven, your apna ghar where you rewind after a day's work.

**THE AMBER MOMENT.
APNA GHAR, APNA AMBER.**

AMBER

A woman with glasses is shown in profile, working at a computer in a dimly lit room. The scene is illuminated by the glow of the monitor and a warm, ambient light source, possibly a lamp, creating a focused and comfortable atmosphere. The woman is wearing a purple tank top and is looking intently at the screen. Her hands are on the keyboard, and a white mug is visible on the desk next to her. The background is dark with some bokeh light effects, suggesting an indoor setting at night.

AMBER

WORKING FROM HOME IS SUPER DELIGHTFUL.

GREAT SPACE.
GREAT AMENITIES.



WORLD PEACE. AT HOME.

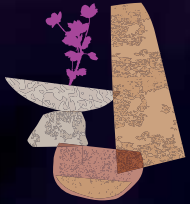
Working from home has its intrinsic benefits. Autonomy, independence, zero commute, savings, flexibility, increased productivity etc.

You, however, need the right infrastructure. Amber, has the right mix of amenities, so that you will never want to work elsewhere.

THE AMBER MOMENT.
अपना घर, अपना AMBER.

**OWN HOME.
RENT FREE.
STRESS FREE.**

HAPPY HOME.
HAPPY MOMENTS.



YOU DESERVE THIS

Aspire Amber makes it possible to cast off on your own and live your dream, just when you are on the cusp of most aspiring time of your life.

Your hard work and early success in life deserve only an Amber home.

AMBER

**THE AMBER MOMENT.
APNA GHAR, APNA AMBER.**



LOCATION
ADVANTAGE.
SUPER
CONVENIENT.

GREAT LINKS AND
CONNECTION.



JUST AMBER ACROSS

Amber is admirably well connected with the city infrastructure owing to its expertly hand picked central location.

So, go ahead and plan your amber moment whenever, wherever.

AMBER

THE AMBER MOMENT.
APNA CHAR, APNA AMBER.





**REAL
PROXIMITY.
REAL VALUE.**

JUST WITHIN
MINUTES.

 **HOSPITALS**

1. NARAYANA MULTISPECIALITY HOSPITAL
2. CLOUD9 CLINIC
3. YASHOMATI HOSPITAL
4. MANIPAL HOSPITAL
5. AAXIS HOSPITAL
6. MIRACLE HOSPITAL.

 **MALLS**

1. INORBIT MALL
2. FORUM VALUE MALL
3. FORUM SHANTINIKETAN
4. ORION UPTOWN MALL

 **SCHOOLS**

1. DEEN'S ACADEMY
2. GREENWOOD HIGH SCHOOL
3. DELHI PUBLIC SCHOOL
4. MVI COLLEGE OF ENGINEERING
5. NATIONAL PUBLIC SCHOOL
6. CHRYSALIS HIGH
7. VAGDEVI VILAS SCHOOL
8. VIBGYOR SCHOOL.

 **METRO TRAIN**

1. PURPLE LINE PHASE 2

 **HOTELS**

1. SHERATON 4 POINTS
2. TAJ VIVANTA
3. THE DEN
4. HOLIDAY INN ZURI
5. JW MARIOTT

 **BUSINESS SPACES**

1. ITPB
2. GOPALAN GLOBAL AXIS
3. DIVYASHREE - REPUBLIC OF WHITEFIELD
4. BRIGADE TECH GARDENS
5. BENZ CORP
6. NOVO NORDISK
7. TCS
8. ACCENTURE
9. L&T
10. SAP
11. BGRT



AMBER

**AMBER MOMENT.
अपना घर, अपना AMBER.**



TREAT YOURSELF

TO ENDLESS AMBERING.



STRUCTURE

R.C.C. framed structure to withstand wind and seismic loads as per IS code.

Solid cement concrete block masonry 100mm, 150mm and 200mm.

DOORS

● Main doors:

Engineered hard wood frame with designer shutters of 35 mm thickness with melamine polish finished on both sides.

● Internal doors:

Engineered hard wood frames with flush shutters of 32 mm thickness with enamel paint finished on both sides.

● French doors:

UPVC door systems with sliding shutters with provision for mosquito mesh.

WINDOWS

UPVC window systems with safety grill (M.S) and provision for mosquito mesh and aluminum for toilet ventilators and staircase windows.

● All Hardware of reputed make.

PAINTINGS

● **External:** One coat primer and two coats of external emulsion paint.

● **Internal:** Smooth putty finish with two coats of Tractor emulsion paint for walls and O.B.D paint for ceiling over a coat of primer.

FLOORING

● **Staircases:** Granite flooring.

● **Living, dining, bedrooms, kitchen and corridor:** 600x600 mm size Nano vitrified tiles.

● **Bathrooms:** 300x300 mm satin finish ceramic tile flooring.

● **All balconies/utilities:** 300x300mm rustic ceramic tiles.

● **Dadoing in kitchen:** 300x450mm Glazed ceramic tiles dado up to 2' height above kitchen platform level.

● **Bathrooms:** 300x450 glazed ceramic tile dado up to false-ceiling level.

● **Basement:** cement concrete power troweled with smooth finish.

HAND RAILING

● **Balcony:** M.S railing.

● **Staircase (common area):** M.S railing.

KITCHEN

● Provision for softened water outlet.

BATHROOMS

● Pedestal wash basin.

● Floor mounted EWC.

● **Sanitary:** Cera or Hindware or Equivalent.

● **C.P Fittings:** Jaquar or Cera or Equivalent.

ELECTRICAL

● Concealed copper wiring of Polycab or Anchor or equivalent.

● Modular switches: Schneider or Anchor or equivalent.

● Power outlets for air conditioners in master bedroom.

● Power outlets for geysers and exhaust fans in all bathrooms.

● Power outlets in kitchen for hob, chimney, refrigerator, microwave oven, mixer and washing machine in utility area.

● 100 % DG backup power for Lifts, Pumps & lighting in common areas.

PLUMBING:

● **Drainage/sewage:** PVC pipes and fittings

● **Water supply (Int & Ext):** CPVC or UPVC pipes & fittings.

● **Telecom / Internet/ Cable TV:** Provision for internet, DTH, telephone & intercom.

COMMON AMENITIES AND FACILITIES OF THE PROJECT

SECURITY:

● Round-the-clock security system.

● Intercom facility to all apartments connecting to security room.

● Panic button and intercom is provided in the lifts.

● Solar power fencing around the compound.

● Surveillance cameras at the main security and entrance of each Wing.

LIFTS:

● One Eight passenger and one thirteen passenger lift for each block with auto rescue device with V3F for energy efficiency. (Schindler or Johnson or Equivalent make).

WTP & STP:

● Softened water made available through an exclusive water treatment plant (in case of bore water).

● Sewage treatment plant of adequate capacity as per norms will be provided inside the project, treated sewage water will be used for the landscaping / flushing purpose.

CLUB HOUSE AMENITIES:

● **Ground floor:** Entrance Lobby, Multipurpose Hall, Gymnasium, Party lawn, Adult pool, Kids pool, pool deck area & Change rooms.

● **First floor:** Yoga/Meditation/Aerobics, Indoor games & Guest room (1no.)



APNA GHAR, APNA AMBER.

AMBER

MASTER
PLAN.

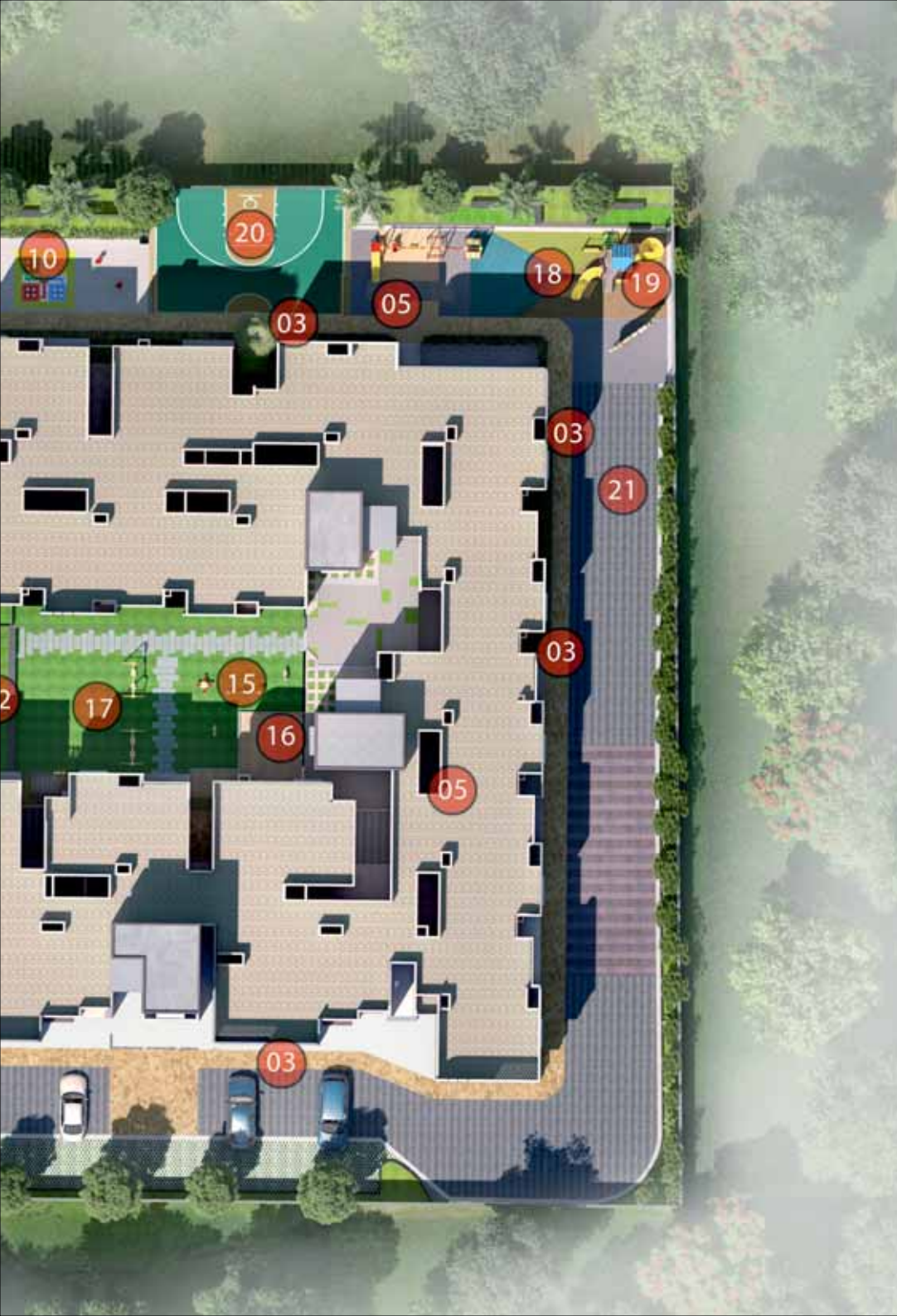
FLOOR
PLANS.

UNIT
PLANS.

THE AMBER MOMENT.
अपना घर, अपना AMBER.

MASTER PLAN.





SERVICES

- 01. ENTER/EXIT GATEWAY
- 02. SECURITY
- 2A. SECURITY KIOSK
- 03. PEDESTRIAN PATHWAY
- 04. ENTRY/EXIT TO THE BASEMENT
- 05. ENTRY TO THE TOWER
- 06. CLUB HOUSE ENTRY/EXIT
- 07. DG AND TRANSFORMER YARD

COMMON AMENITIES

- 08. CAR PARKING(VISITOR'S)
- 09. WAITING AREA

CHILDREN'S PLAY/RECREATIONAL AREA

- 10. LUDO
- 11. HOPSCOTCH
- 12. SNAKE & LADDER
- 13. GIANT CHESS
- 14. ELDER'S ZONE
- 15. TOT-LOT ON SAND PIT
- 16. CLIMBING WALL

- 17. CHILDREN'S PLAY AREA ON LAWN
- 18. CHILDREN'S PLAY AREA ON EPDM
- 19. CHALK WALL
- 20. MULTIPURPOSE COURT
- 21. SKATING RINK
- 22. SEATING PLAZA

CLUBHOUSE

- 23. CLUB HOUSE
- 23.1 OUTDOOR PARTY SPILLOVER
- 24. ADULT'S POOL
- 24.1 KID'S POOL
- 24.2 DECK

AMBER AROUND.

NOT ONLY A LIVING SPACE, IT'S A WHOLE LIFESTYLE.

RERA REGISTERED: PRM/KA/RERA/1251/446/PR/250222/004731/RERA.KARNATAKA.GOV.IN

**FLOOR
PLAN.**
WINGS A,B,C.



A wing



C wing



B wing



FLOOR PLAN. WING A.



201-701

202-702

203-703

204-704

205-705

206-706



212-712

211-711

LIFT

210-710

209-709

208-708

LIFT

207-707



FLOOR PLAN. WING B.



FLOOR PLAN. WING C.





BLOCK A
102-702, 103-703
EAST FACING

S.B.U.A. 985 SQ. FT
 CARPET AREA 640 SQ. FT
 BALCONY AREA 20 SQ. FT

BLOCK B
108-708
EAST FACING

S.B.U.A. 985 SQ. FT
 CARPET AREA 640 SQ. FT
 BALCONY AREA 20 SQ. FT

BLOCK C
102-702, 103-703, 104-704
EAST FACING

S.B.U.A. 985 SQ. FT
 CARPET AREA 640 SQ. FT
 BALCONY AREA 20 SQ. FT



BLOCK A
201-701
EAST FACING

S.B.U.A. 1010 SQ. FT
 CARPET AREA 622 SQ. FT
 BALCONY AREA 65 SQ. FT

BLOCK C
201-701
EAST FACING

S.B.U.A. 1010 SQ. FT
 CARPET AREA 622 SQ. FT
 BALCONY AREA 65 SQ. FT



BLOCK A
005-705
EAST FACING
 S.B.U.A. 945 SQ. FT
 CARPET AREA 640 SQ. FT

BLOCK B
107-707
EAST FACING
 S.B.U.A. 945 SQ. FT
 CARPET AREA 640 SQ. FT



BLOCK A
004-704
WEST FACING
 S.B.U.A. 965 SQ. FT
 CARPET AREA 643 SQ. FT

BLOCK C
205-705
WEST FACING
 S.B.U.A. 965 SQ. FT
 CARPET AREA 643 SQ. FT



BLOCK B
109-709
WEST FACING

S.B.U.A. 975 SQ. FT
CARPET AREA 643 SQ. FT
BALCONY AREA 27 SQ. FT



BLOCK A
108-708, 109-709, 210-710
NORTH FACING
S.B.U.A. 965 SQ. FT
CARPET AREA 643 SQ. FT
BALCONY AREA 20 SQ. FT



BLOCK B
106-706
NORTH FACING

S.B.U.A. 945 SQ. FT
CARPET AREA 640 SQ. FT

BLOCK C
208-708
NORTH FACING

S.B.U.A. 945 SQ. FT
CARPET AREA 640 SQ. FT



BLOCK A
106-706, 107-707
WEST FACING

S.B.U.A. 965 SQ. FT
 CARPET AREA 643 SQ. FT
 BALCONY AREA 20 SQ. FT

BLOCK B
101-701, 102-702
WEST FACING

S.B.U.A. 965 SQ. FT
 CARPET AREA 643 SQ. FT
 BALCONY AREA 20 SQ. FT



**BLOCK B
203-703
WEST FACING**

S.B.U.A. 990 SQ. FT
CARPET AREA 643 SQ. FT
BALCONY AREA 45 SQ. FT



BLOCK C
208-708
NORTH FACING

S.B.U.A. 945 SQ. FT
 CARPET AREA 640 SQ. FT

FLOOR PLAN.
3 BHK.
TYPE 1.



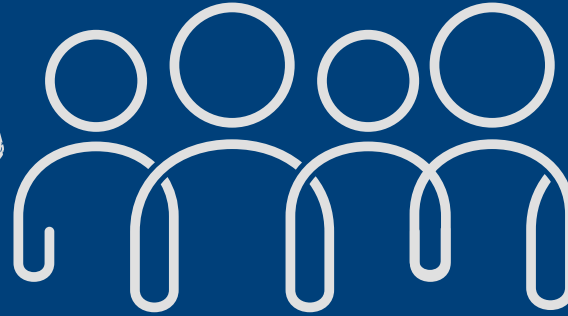
BLOCK A
311-711, 312-712
NORTH FACING
 S.B.U.A. 1135 SQ. FT
 CARPET AREA 640 SQ. FT
 BALCONY AREA 135 SQ. FT

BLOCK B
204-704, 205-705
NORTH FACING
 S.B.U.A. 1135 SQ. FT
 CARPET AREA 640 SQ. FT
 BALCONY AREA 135 SQ. FT

BLOCK C
106-706, 207-707, 209-709
NORTH FACING
 S.B.U.A. 1135 SQ. FT
 CARPET AREA 640 SQ. FT
 BALCONY AREA 135 SQ. FT



S.NO.	LIST OF APPROVALS	SANCTION AUTHORITY	CURRENT STATUS	DATE OF APPROVAL	APPROVAL NUMBER
01.	BDA approval	Bangalore Development Authority	APPROVED	10.11.2021	BDA/PS/EM/EO-1/TA-4/EAST/16/2020-21
02.	Water permission-PDO	Panchayath Water Permission	APPROVED	18.01.2021	PDO/DODDABANAHALLI/01/2020-21
03.	KSPCB	Karnataka State Pollution Control Board	APPROVED	24.08.2021	CTE-326371 & PCB/26/INFRA/2021
04.	SEIAA	State Level Environment Impact Assessment Authority - Karnataka	APPROVED	06.04.2021	SEIAA/139/CON/2020
05.	FIRE	Karnataka State Fire and Emergency Services	APPROVED	15.01.2021	KSFES/GBC/(1)/409 & DOCKET NO. KSFES/NOC/304/2020
06.	AAI	Airport Authority of India	APPROVED	12.02.2020	BIAL/SOUTH/B/010620/437842
07.	BSNL	Bharat Sanchar Nigam Limited	APPROVED	10.01.2020	DE/SAN/BG/NOC-HRB (S-11)/2019-20/68 DATED@BG-41
08.	BESCOM	Bangalore Electrical Supply Company Limited	APPROVED	08.03.2021	SEE/BRC/EE(O)/AEE(O)/F1(A)/2020-21/6365-66
09.	RERA	Real Estate Regulatory Authority Karnataka	APPROVED	25.02.2022	PRM/KA/RERA/1251/446/PR/250222/004731



ARCHITECTS

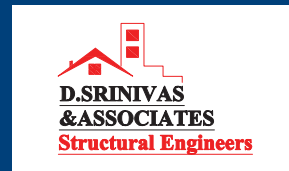


DB DESIGN STUDIO

Unit 11, Arya Hub Mall
Hope Farm Junction
Whitefield
Bangalore 560066.

www.dbarchitects.in

STRUCTURAL CONSULTANT



DSA ENGINEERING CONSULTANTS PVT. LTD

Flat no. 403, A Block
Aspen woods Apartment
Doddakamanahalli
Bangalore- 560076.

LANDSCAPE CONSULTANT



DHRUVA ASSOCIATES

156/B, 10th A Main road
5th cross, 1st block
Jayanagar
Bangalore 560011.

www.dhruvaassociates.com

MEP SERVICES CONSULTANT



LEAD CONSULTANCY & ENGINEERING SERVICES(I) PVT LTD

No 40, First floor, 10th A Main,
3rd cross, 2nd stage
Indira Nagar
Bangalore-560038.

www.lcsind.org



SUMADHURA HOMES LLP.

CORPORATE OFFICE:

108/2, Millenia Building, 1st Main, MSR
Layout, Outer Ring Road, Marathahalli
Bengaluru 560037.

SITE OFFICE:

V.P. Khatha No 191, Sy No. 114/5
Doddabarahalli Village, Bidarahalli Hobli
Bengaluru East Taluk, Bengaluru 560067.

Changes may be made during the development and standard fittings and specifications are subject to change without notice. The imagery used in the brochure is indicative of style only. The photographs of the interiors, surrounding views and location may have been digitally enhanced and altered and do not represent actual or surrounding views. No photos have been shot at site. Floor plans are in accordance with the last approved sanctioned plan and may be subject to change mandated by the government authorities and/or applicable law. Standard fittings and finishes are subject to availability and vendor discretion. The images shown in the brochure are not standard and will not be provided as a part of an apartment. The information content herein is believed to be true but not guaranteed. The colours of the buildings are indicative. This is a reference document intended only to provide generic information and does not constitute an offer or contract.

 [teamsumadhura](#)  [@teamsumadhura](#)
80105 34534/ enquiries@sumadhuragroup.com

www.sumadhuragroup.com

Member
CREDAI



AMBER NOW.



अपना घर. अपना अम्बर.



RERA REGISTERED

PRM/KA/RERA/1251/446/PR/250222/004731/RERA.KARNATAKA.GOV.IN

