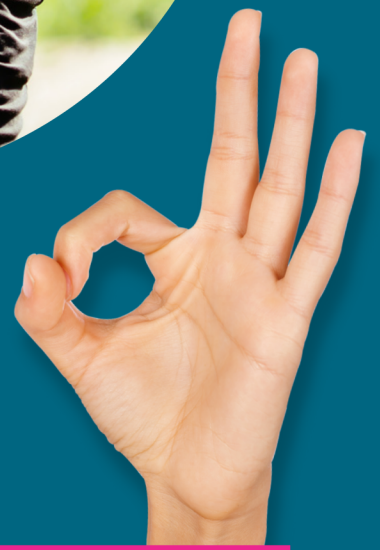


PALAASH

अदृश्या

यहाँ Life है मस्त!



1 & 2 BHK FLOURISHING HOMES

AT TALEGAON NEAR AISHWARYA HOTEL



HIGHLIGHTS

- Easy connectivity to Pune and Mumbai through Pune-Mumbai highway as well as Express way
- MNC Companies in Talegaon MIDC are located in near periphery
- World-class educational institutes in the vicinity
- Easy access to hospital, markets, banks, cinema, shopping malls etc.
- Ideal location for harmonious living and professional purpose
- A complete destination that offers great accessibility and better lifestyle



Live every moment

Celebrate
every minute!

AMENITIES

- Community hall
- Fully equipped gymnasium
- Library
- Party lawn
- Toddler's splash pool
- Children's play area
- Sandpit area
- Practice Volleyball court/ play area
- Practice Basketball area
- Table tennis room
- Gazebo/ Meditation Area
- Well-designed landscaping
- Well-designed main entrance gate with security cabin
- Society office

SPECIFICATIONS

Earthquake resistant structure confirming to IS 1893 - 2002 & IS 456-2000 with Pune city in Zone 3

Doors

- a) Main door - Decorative Main Door
- b) Other doors - decorative MDF door to the bedroom and Water Resistant doors to Toilets & Dry Balconies and Terrace
- c) Brass Fittings for Doors
- d) Powder coated Aluminium Sliding doors with Mosquito Net / Water resistant Flush Doors for attached Terraces

Windows

- a) Powder-coated Aluminium Sliding Windows with Mosquito net except for Toilet, Bath, WC
- b) M.S. Grills for Windows of Living Rooms, Bedrooms & Kitchen from outside
- c) Powder coated Aluminium Windows with Exhaust Fan provision for WC, Bath, Toilets & Kitchen
- d) Green Marble Window Sills

Flooring

- a) Vitrified flooring 600mm x 600mm for entire flat except Terraces, Dry Balconies, WC, Bath & Toilet
- b) 300mm x 300mm Anti Skid ceramic flooring for Terraces, Dry Balconies and for WC, Bath & Toilets

Kitchen

- a) Granite Kitchen platform with S.S. finish sink, & outlets for Water Purifier
- b) Coloured glazed tile dado up to 2'ht above Kitchen platform

Toilets

- a) Concealed plumbing with chromium plated fittings
- b) Hot & Cold Mixing units for shower
- c) Colored glazed tile dado in Toilets / Bath up to lintel level & in W.C. up to 4' ht.

Electrification & Cabling

- a) Concealed copper wiring in the entire flat
- b) Telephone & TV. Points in the Living room,
- c) Generator back-up for lifts, staircase, lobbies
- d) Provision for inverter in each flat

Painting

Roller finish oil-bond distemper paint to walls internally & cement paint externally

Water Supply

- a) Water supply through overhead water tank

Lifts

- a) Lifts with auto floor rescue device

Well-designed entrance lobbies.

Continuing with our rich tradition that shapes homes with ultra-modern architecture and the perfect blend of traditional living, PALAASH Sadaphuli will give you the best of both worlds.

Homes always breathe fresh with windows built such that they allow not only fresh air but also natural light. All available space is well utilized to meet your needs which lets you to live a life flourishing with happiness.

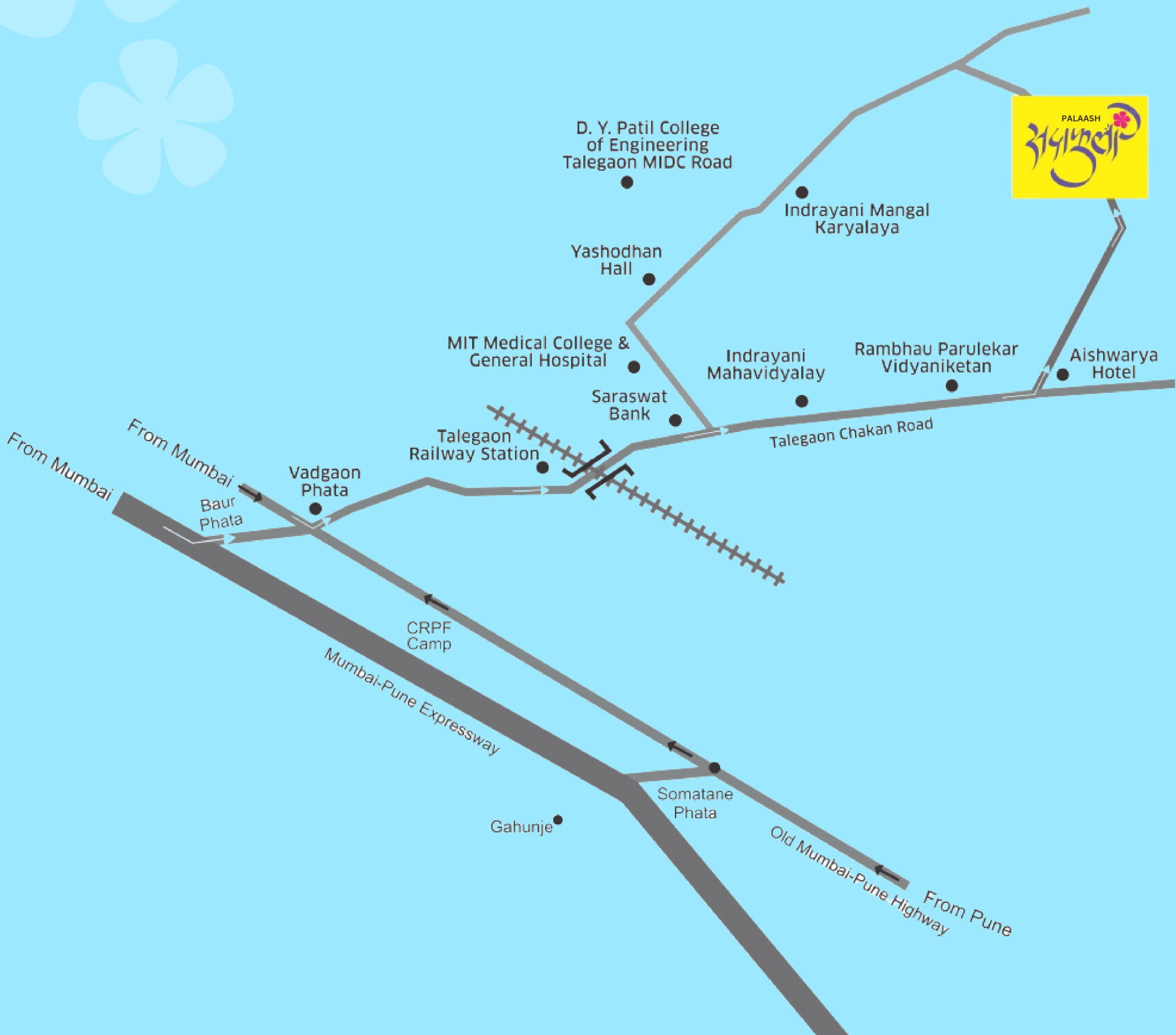


1 BHK



2 BHK

LOCATION MAP



SITE ADDRESS

PALAASH SADAPHULI,
S.NO.7, HISSA NO. 1/2/2(P),
WARALE, NEAR AISHWARYA HOTEL,
TALEGAON, PUNE



801080 6030

Disclaimer: The contents of this brochure pre conceptual. Furniture, amenities and fixtures shown may not be part of actual offering. The developer reserves the rights to amend layouts; plans, number of floors, specifications, color scheme, amenities etc. without any notice. Project by G S Associates, Palaash is just a trade mark for branding.