

A Unit of SHARDA

NTPC ANANDAM PLAZA

RETAIL & OFFICE SPACE

Futuristic by *design*,
Thoughtful by *intent*.





Bringing the joy and glitter of Retail & Office together

Sharda Infra now proudly presents a premium Retail destination "NTPC Anandam Plaza", located in the prime location of Greater Noida. This 2000 sq. mtr 3 side open plot will have a four storey fully commercial floors having 96 units, comprising of new age and premium two side open retail spaces ranging in size from 365 sq.ft onwards. It is set to become a land mark destination. The population density of the area is approx 10,000 families in 1sq. km. We invite entrepreneurs to catch this opportunity and grow their business on this landmark destination.



A East facing Vastu friendly 3 side open project has a stunning external presence and thoughtfully-created interiors including grand double height entrance, pedestrian walkways, green area, sitting areas, kids play area, ample parking space, spacious elevators and great view as all units are two side open.

The NTPC Anandam Plaza is perfect for those who have a vision of the future for their business!!



2000
SQ. MTR
PLOT AREA

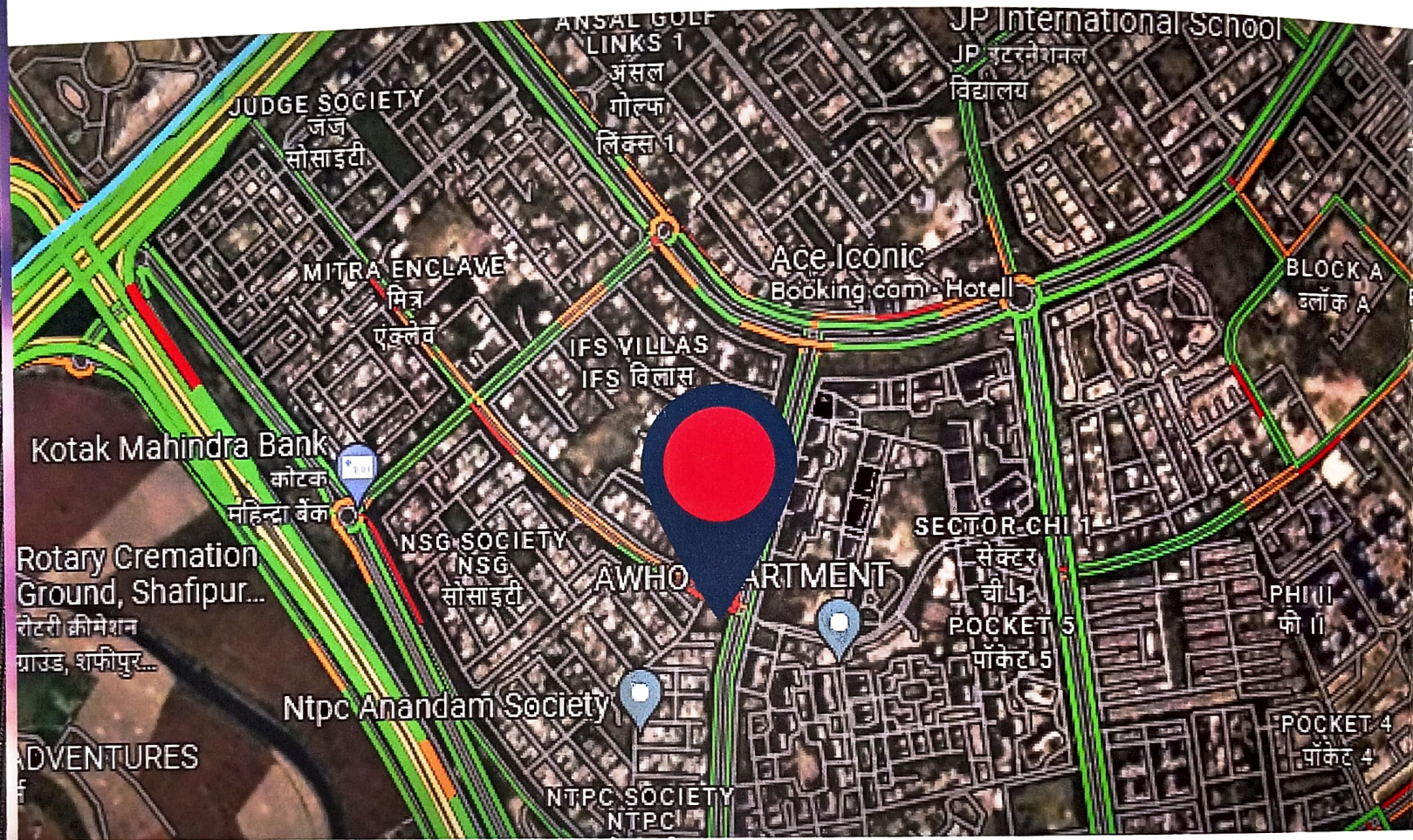
3
SIDE
OPEN

96
UNITS

24
OFFICE
SPACE

- A mega highstreet destination spread over 2000 sq mt
- 3-Side open plot with wide frontage
- All units are 2 side open
- One side 45 M road and 2 side 30 Mtr road
- Blend of retail and anchor stores and multi-cuisine Restaurants
- 24 x 7 Security
- High speed camera installation all around
- Gated complex
- Music system in common area
- A Big LED screen at the entrance
- Intercom Facility
- Antifire equipments installed in common areas
- Common Dish antenna
- Gas pipe line

Location



A Compellingly Well Connected Location

Being located in the fast-developing commercial district of Greater Noida is an opportunity. And here's why:

Noida Expressway-	05 mins	Yatharth hospital-	02 mins
Yamuna Expressway-	05 mins	Hotel Savoi Suits-	03 mins
Metro Station-	05 mins	Hotel Radisson-	05 mins
Pari Chowk-	06 mins	Hotel JP Resorts-	06 mins
Corporate Hub-	10 mins	Hotel Holiday In-	10 mins
Industrial Hub-	10 mins	Upcoming Jewar Airport-	15 mins

Specifications



Lobby & Common Areas

Lifts: Otis/Schindler/Kone/Equivalent.
Flooring: Vitrified Tiles/Italian Marble.
Ceiling: False ceiling.
Paint: Dulux/Asian/Berger.
Railing: SS Railing with Glass.
Walls: Plastered with paint.
Electricity: LED lights.
Staircase: Granite/Anti-Skid tiles.

Common Toilets (M & F)

Flooring: Anti Skid Tiles/Stone Flooring.
Paint: Dulux/Asian/Berger.
Wall Cladding: Tiles/Stone.
W.C. & Urinal: Branded Wall Mounted.
CP Fitting: Branded Chrome Plated.

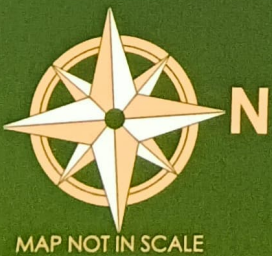
Shops

Flooring: Rough Flooring.
Walls: Brick wall with plaster.
Ceiling: Exposed RCC Ceiling.
Entry: M.S Shutter.
Electricity: One DB as per required load.

Outer Area

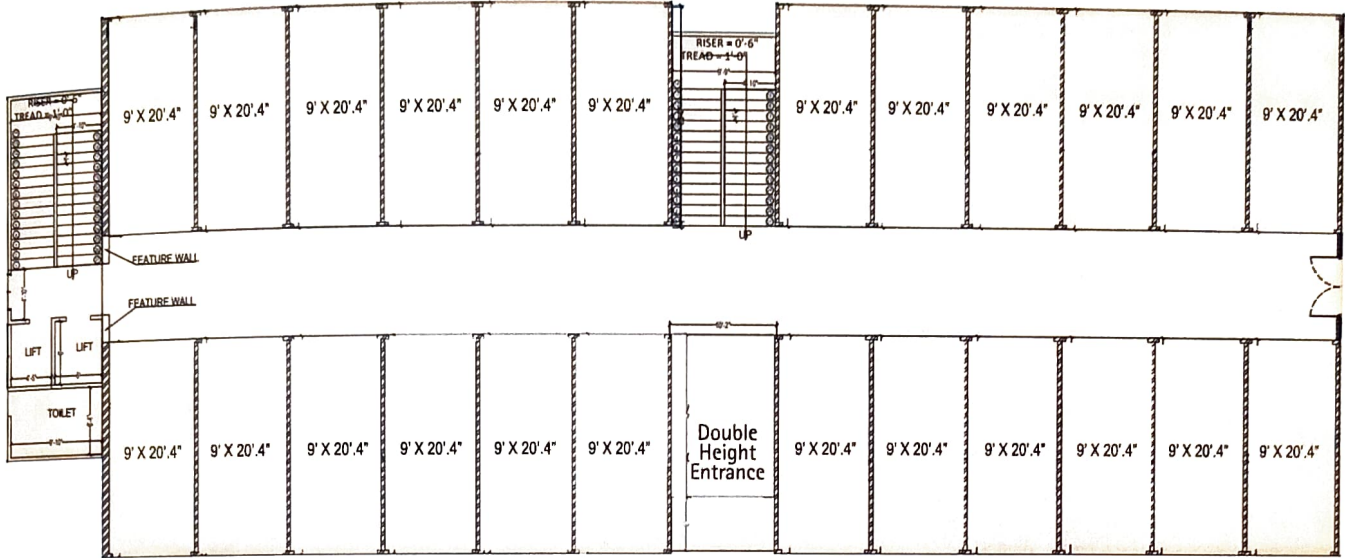
To be provided with parking, green area with colorful tiles and fancy lights.

Birds View of the site

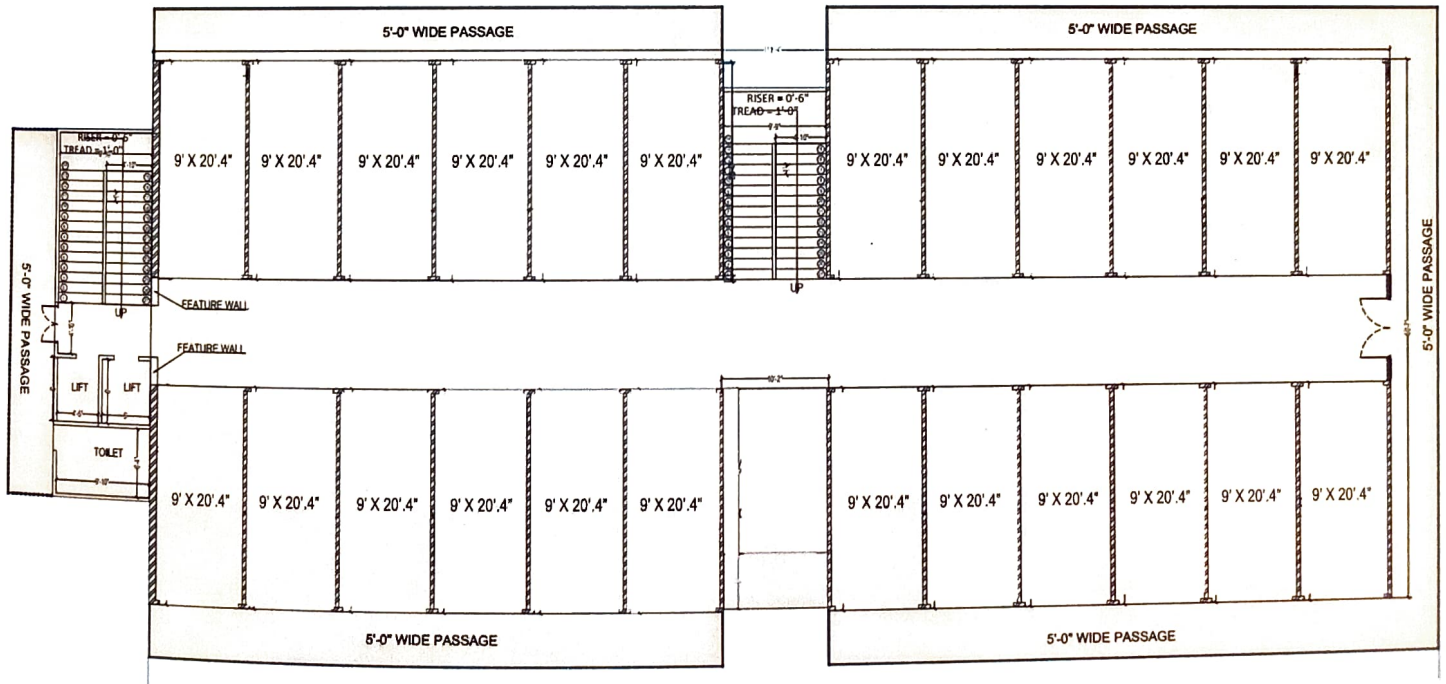


Perfect place to
grow your business

Floor Plan



Ground Floor



Upper Ground Floor, First Floor, Second Floor

Completed Projects



Alankrit of 90 units, completed in 2018



Sukh Sagar Complex of 54 units, completed in 2019

Ongoing Projects



Sukh Sagar Awasiya Yojna of 104 units

SHARDA
INFRA

SITE ADDRESS

Plot no 3, Pocket 6, Chai I, Greater Noida

SHARDA INFRA

FF-12 A, Angel Mega Mall, Kaushambi, Ghaziabad,
Uttar Pradesh 201010

E-mail- info@shardabusiness.com

ARCHITECT

DESIGN ARCHITECTURAL SOLUTION

Disclaimer: This Brochure is not a legal document. It describes the conceptual plan to convey the intent and purpose of Anandam Plaza. The image are imaginary and the details mentioned in this brochure are tentative and subject to change at the sole discretion of the developer and / or architects.