
The Ultimate Frontier Of Splendour



Artist's Impression

Note: Tower E of Building No. 3 ("Project") is a separate phase of development of "Vivarea" by Promoter, Genext Hardware & Parks Private Limited (a "K. Raheja Corp Group Co."). Tower E of Building No. 3 has been registered via MahaRERA registration number P51900019931 and is available on the website <https://maharera.mahaonline.gov.in> under registered projects. The image featured herein is illustrative image for representation purpose only. Intending purchasers are requested to verify all details before acting in any manner with respect of the Project. The Promoter's share of apartment/s in the Project are mortgaged with HDFC Limited. No Objection letter would be obtained at the relevant time, when required.

P51900019931

Palatial Sky Mansions

3 and 4 Bed Ultra-luxe Apartments



Artist's Impression

P51900019931

Note: Tower E of Building No. 3 ("Project") is a separate phase of development of "Vivarea" by Promoter, Genext Hardware & Parks Private Limited (a "K. Raheja Corp Group Co."). Tower E of Building No. 3 has been registered via MahaRERA registration number P51900019931 and is available on the website <https://maharera.mahaonline.gov.in> under registered projects. The image featured herein is illustrative image for representation purpose only. Intending purchasers are requested to verify all details before acting in any manner with respect of the Project. The Promoter's share of apartment/s in the Project are mortgaged with HDFC Limited. No Objection letter would be obtained at the relevant time, when required

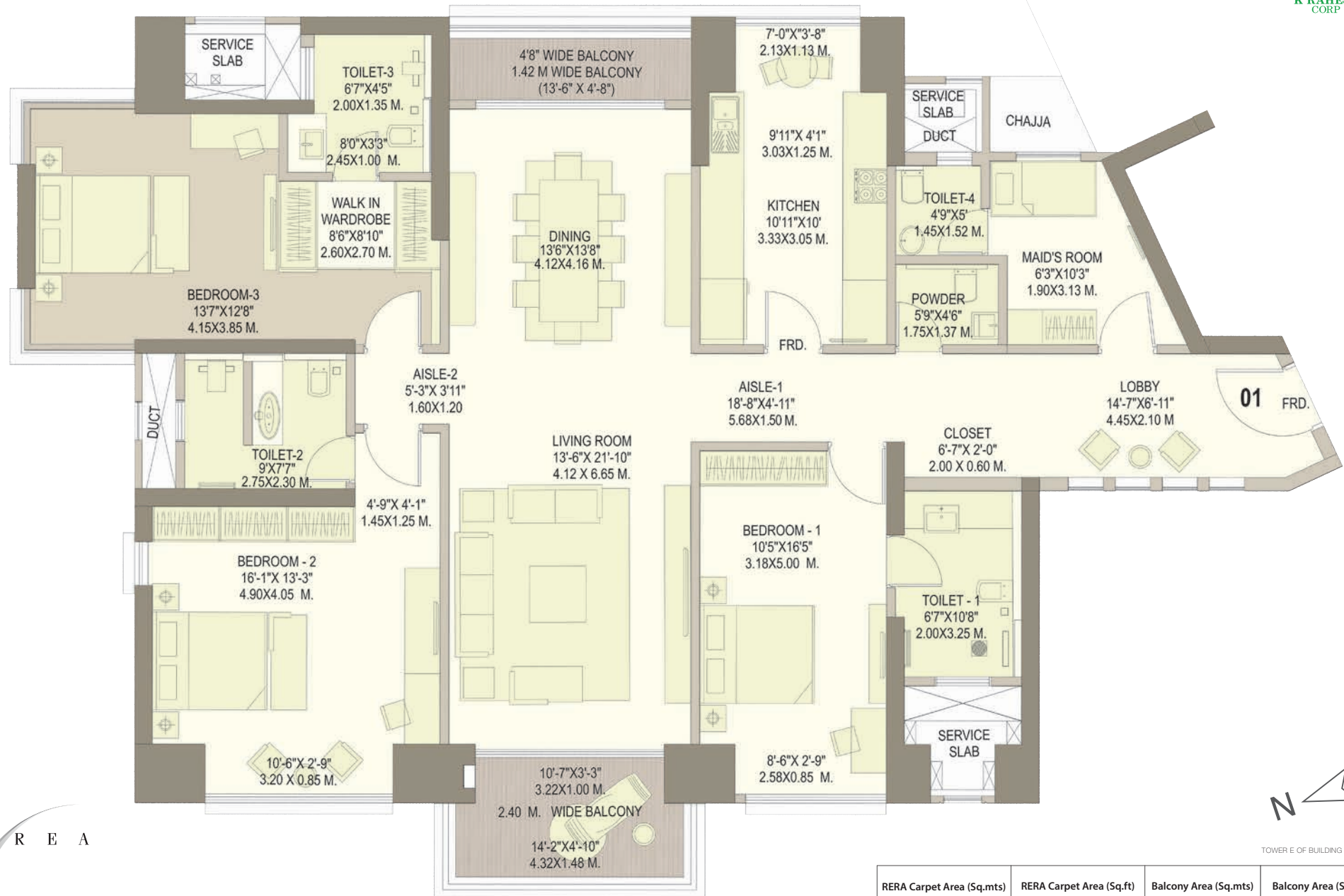


Lounge Amidst Nature

Inspired by the Mondrian Design Theory

Artist's Impression

3 BHK - FLAT NO.1

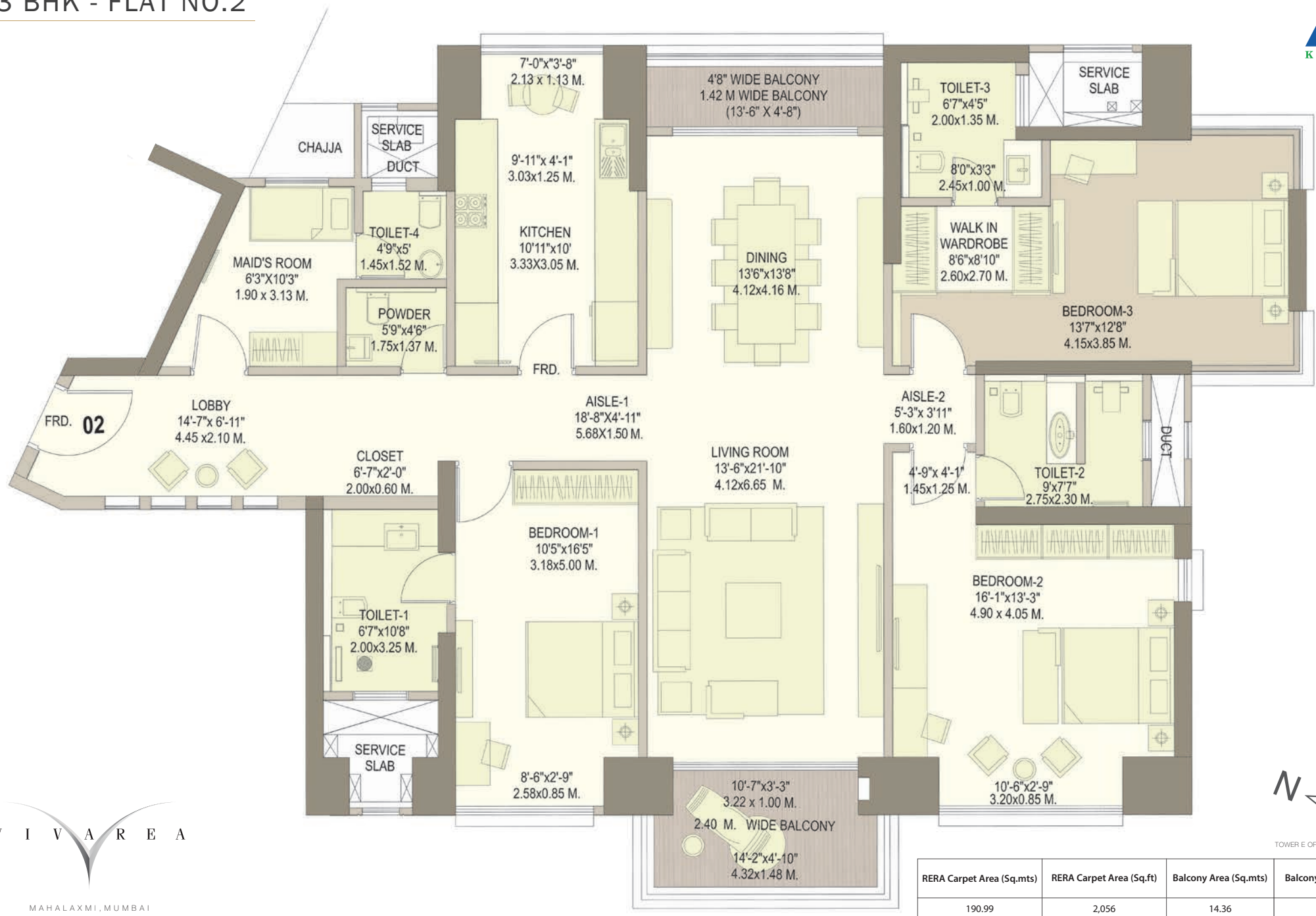


TOWER E OF BUILDING NO. 3

RERA Carpet Area (Sq.mts)	RERA Carpet Area (Sq.ft)	Balcony Area (Sq.mts)	Balcony Area (Sq.ft)
190.99	2,056	14.36	155

Note: Tower E of Building No. 3 ("Project") is a separate phase of development of "Vivarea" by Promoter, Genext Hardware & Parks Private Limited (a "K. Raheja Corp Group Co."). Tower E of Building No. 3 has been registered via MahaRERA registration number P51900019931 and is available on the website <https://maharera.mahaonline.gov.in> under registered projects. The image featured herein is illustrative image for representation purpose only. Intending purchasers are requested to verify all details before acting in any manner with respect to the Project. The Promoter's share of apartment/s in the Project are mortgaged with HDFC Limited. No Objection letter would be obtained at the relevant time, when required

3 BHK - FLAT NO.2



TOWER E OF BUILDING NO. 3

Note: Tower E of Building No. 3 ("Project") is a separate phase of development of "Vivarea" by Promoter, Genext Hardware & Parks Private Limited (a "K. Raheja Corp Group Co."). Tower E of Building No. 3 has been registered via MahaRERA registration number P51900019931 and is available on the website <https://maharera.mahaonline.gov.in> under registered projects. The image featured herein is illustrative image for representation purpose only. Intending purchasers are requested to verify all details before acting in any manner with respect of the Project. The Promoter's share of apartment/s in the Project are mortgaged with HDFC Limited. No Objection letter would be obtained at the relevant time, when required

4 BHK - FLAT NO.3

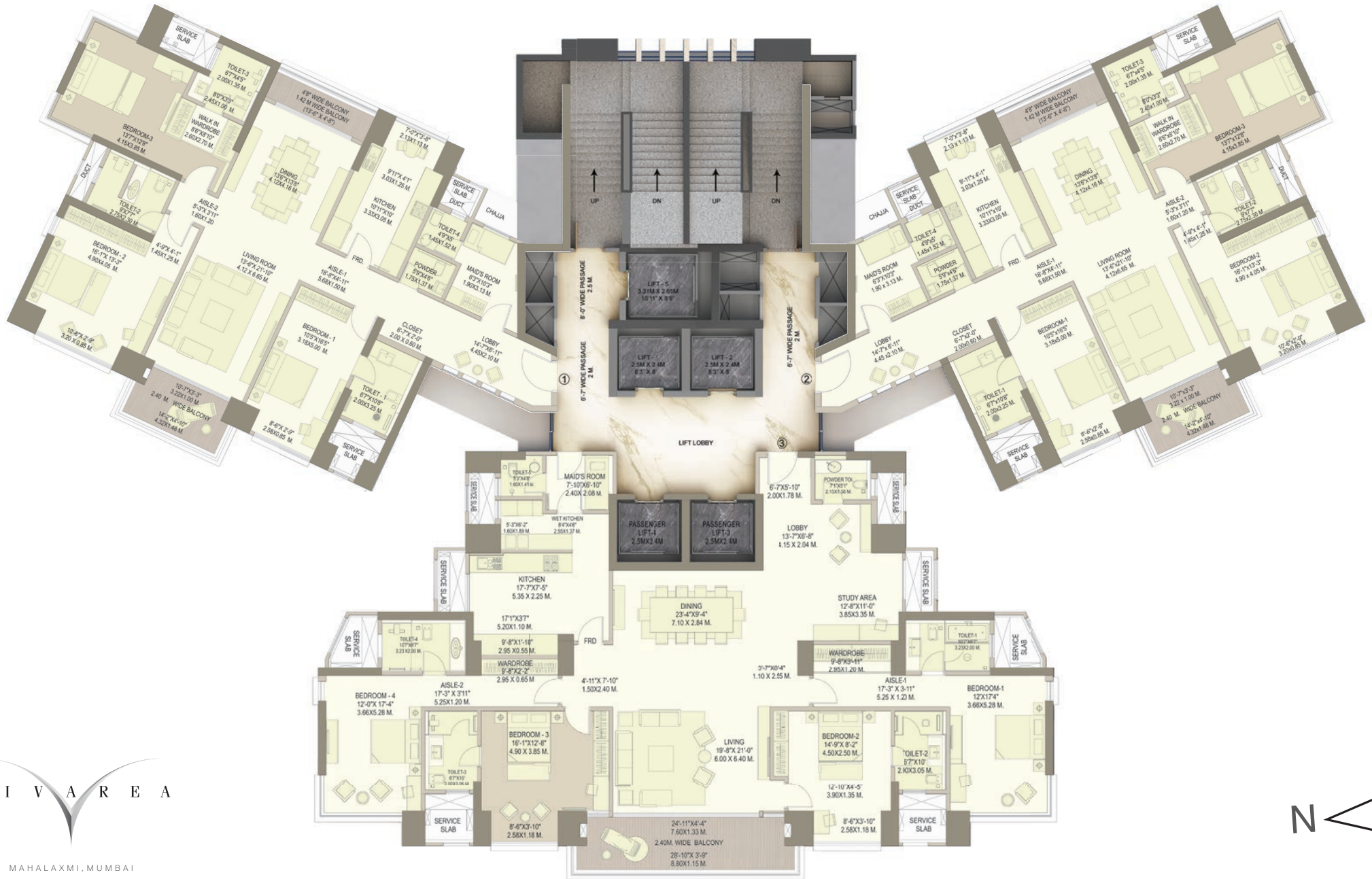


TOWER E OF BUILDING NO. 3

RERA Carpet Area (Sq.mts)	RERA Carpet Area (Sq.ft)	Balcony Area (Sq.mts)	Balcony Area (Sq.ft)
268.68	2,892	18.48	199

Note: Tower E of Building No. 3 ("Project") is a separate phase of development of "Vivarea" by Promoter, Genext Hardware & Parks Private Limited (a "K. Raheja Corp Group Co."). Tower E of Building No. 3 has been registered via MahaRERA registration number P51900019931 and is available on the website <https://maharera.mahaonline.gov.in> under registered projects. The image featured herein is illustrative image for representation purpose only. Intending purchasers are requested to verify all details before acting in any manner with respect of the Project. The Promoter's share of apartment/s in the Project are mortgaged with HDFC Limited. No Objection letter would be obtained at the relevant time, when required

TYPICAL FLOOR PLAN



Note: Tower E of Building No. 3 ("Project") is a separate phase of development of "Vivareva" by Promoter, Genext Hardware & Parks Private Limited (a "K. Raheja Corp Group Co."). Tower E of Building No. 3 has been registered via MahaRERA registration number P51900019931 and is available on the website <https://maharera.mahaonline.gov.in> under registered projects. The image featured herein is illustrative image for representation purpose only. Intending purchasers are requested to verify all details before acting in any manner with respect of the Project. The Promoter's share of apartment/s in the Project are mortgaged with HDFC Limited. No Objection letter would be obtained at the relevant time, when required

Highlights:



Project Features:

- Contemporary 44 storied tower with 3 & 4 Bed residences
- All apartments equipped with spacious balconies
- Stunning landscape designed by Site-technics, adorned with water features, trellis & activity zones
- Extensive array of amenities for leisure & sports
- Grand arrival experience/ drop off with landscaping and water feature
- Apartments with 270 degree views to maximize light and air
- 4 high-speed elevator lifts and one service elevator
- High quality decorative lighting fixtures used in the lobby

Apartment:

- Apartments adorned with floor-to-ceiling height of 12ft
- Balconies finished with vitrified tiles floor and glass & aluminium railing
- PVDF coated aluminium windows with DGU glass & multi-locking facility
- Marble flooring in living, bedroom & wooden flooring in one bedroom
- Equipped with fire rated main door & kitchen door
- Luster paint for internal finishes
- High quality plumbing & sanitary fittings of duravit or equivalent

Leisure features:

- State-of-the art existing clubhouse with health and leisure facilities
- Temperature controlled Swimming Pool
- Kids' Pool
- Jacuzzi
- Spa with Steam & Massage rooms
- Indoor games room
- Restaurant
- 2 Mini-Theatres
- Banquets with waiting lounge extending to the party lawn
- Party hall

Sports & fitness features:

- 2 Badminton courts
- Tennis court
- Futsal
- 2 Squash courts
- 2 Gymnasiums with multiple outdoor gyms
- Mini-basketball court
- Beautifully landscaped gardens

Safety Features:

- Earthquake resistant structure
- CCTV surveillance in designated common areas
- Firefighting system
- Sprinkler system
- Public address system for fire & life safety
- Video door phone & integrated intrusion alarm system
- Kitchen equipped with heat & smoke detectors
- Fire-rated doors for the apartments & lobbies

Awards & Accolades



MahaRera registration number: P51900019931
(Website: <https://maharera.mahaonline.gov.in>)

VIVAREA SITE ADDRESS: Sane Guruji Marg, Jacob Circle, Mahalaxmi, Mumbai – 400011

HEAD OFFICE ADDRESS : Raheja Tower, Plot No. C-30, Block G, Next to Bank of Baroda, Bandra - Kurla Complex, Bandra (East), Mumbai - 400051

Call : 8080445445 or write to sales@kraheja.com

Tower E of Building No. 3

NOTE: "Vivarea" by Promoter - Genext Hardware & Parks Private Limited (a 'K. Raheja Corp group' co.), comprises of Building No.1 (Towers - A, B and C), Building No.2 (Tower D) and Building No.3 (Tower E). Building Nos.1 and 2 have received OC on 18.07.2013 and 11.02.2018 respectively. Building No. 2 - Phase of Vivarea and Tower E of Building No. 3 have been registered via MahaRERA registration number P51900008014 & P51900019931 respectively and their details are available on the website <https://maharera.mahaonline.gov.in> under registered projects. The images depicted are either actual or indicative images for illustration. The amenities and facilities showcased are actual or indicative images of amenities and facilities provided or to be provided for the project 'Vivarea'. The dimensions mentioned on the floor plans are as per the plans approved by the MCGM. The furniture and features depicted in the typical floor plans (save and except fittings and features as may be agreed to be provided) are not part of the standard offering and are purely illustrative. Details on the specifications of building/apartment, standard offerings, amenities and facilities are available at site for verification. The landmarks indicated on the map may be subject to change and to which, the Promoter has no control. Intending purchasers are requested to verify all details before acting in any manner with respect to the project Vivarea. The Promoter's share of apartment/s in the Vivarea are mortgaged with HDFC Limited. No Objection letter would be obtained at the relevant time, when required.