

Park
View Spa

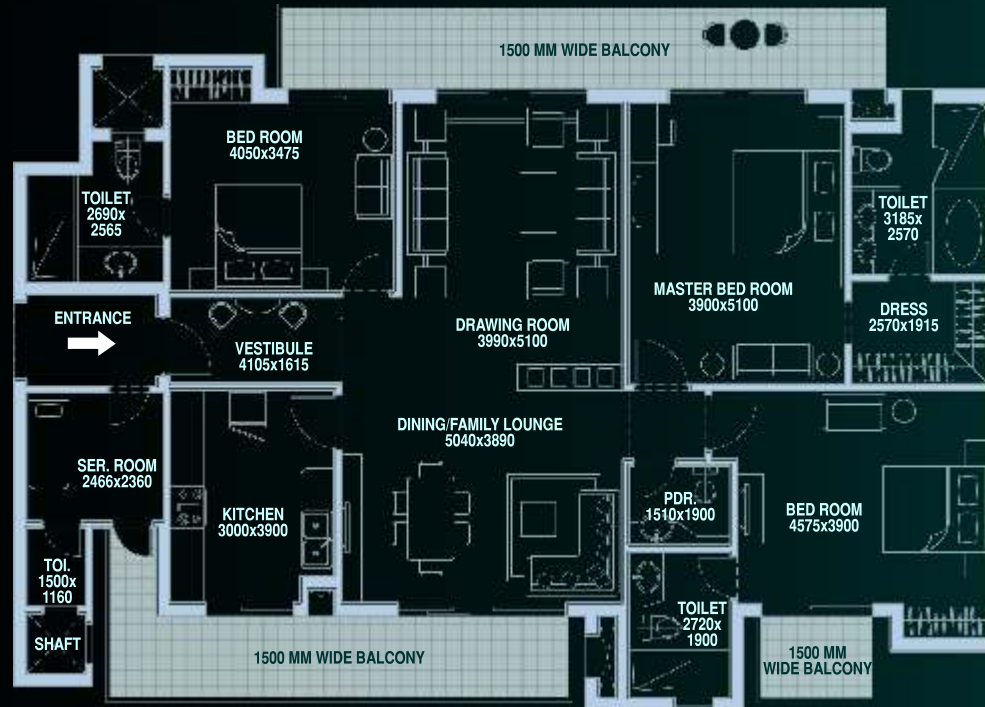
Nothing more to desire

by  BESTECH



3 BEDROOM

TOTAL AREA	2470 SQ. FT.
TOWERS	A, B, C, D, G, H, I



4 BEDROOM



TOTAL AREA	3125 SQ. FT.
TOWERS	A, C, D, E, I



4 BEDROOM DELUXE



TOTAL AREA	3715 SQ. FT.
TOWERS	A, B, C, D, E, H





Park
View Spa



BESTECH

Positive

An unsaid feeling of everything being just right...as it should be of carefully thought out, planned spaces that embrace you in comfort every time... in an environment that soothes, pampers and rejuvenates

BESTECH

Park View Spa

Sector-47, Gurgaon





LEGENDS

1. AMPHITHEATRE
2. WATER BODY
3. LAWN
4. SWIMMING POOL
5. KIDS POOL
6. MEDITATION PARK
7. BADMINTON COURT
8. BASKET BALL
9. TENNIS COURT
10. CHESS COURT
11. JOGGING TRACK
12. CRICKET NET
13. VOLLEY BALL COURT
14. SKATING RINK
15. PETS GARDEN
16. KIDS PLAY AREA



Specifications

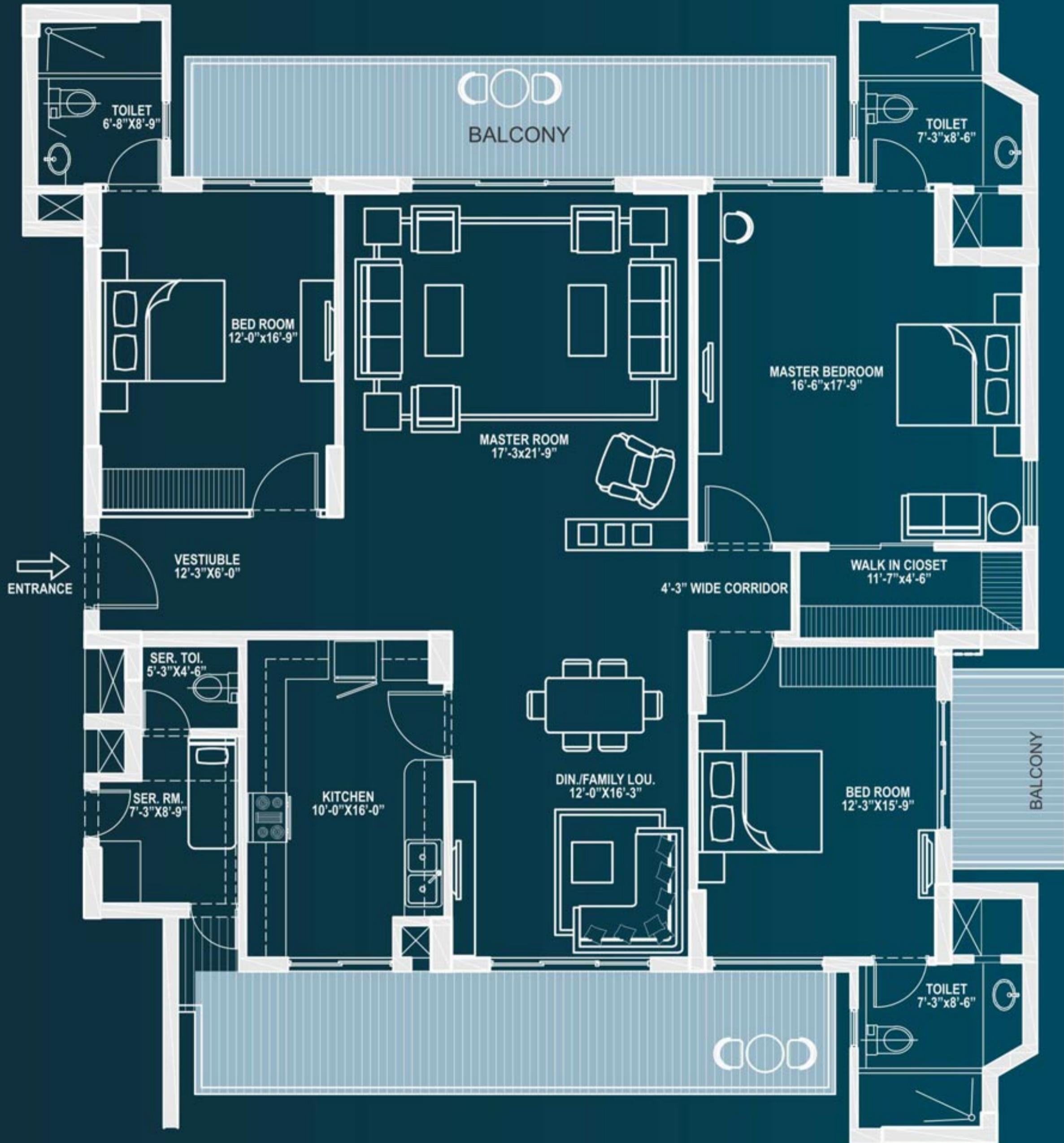
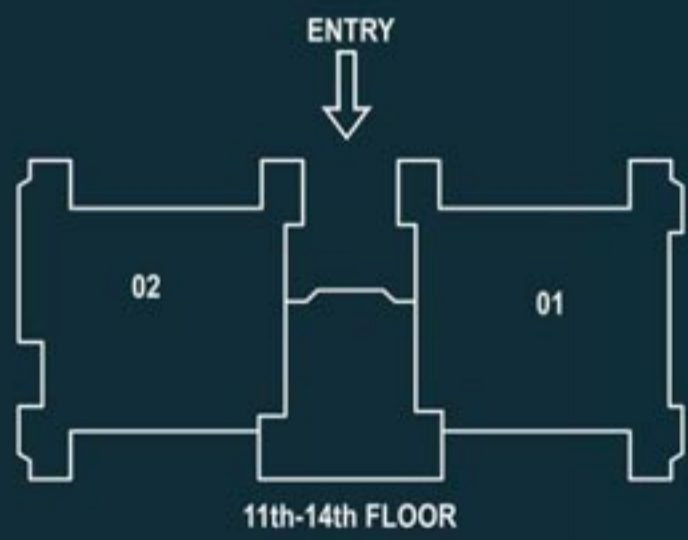
- | | |
|--------------------------|---|
| General | <ul style="list-style-type: none"> • Imported marble in living and dining area • Laminated wooden flooring in bedrooms • Anti-skid ceramic tiles in all balconies • Seasoned hardwood frames with European style shutters • 8' Veneer teak wood main door • Powder coated aluminum windows/glazing • Split Air Conditioners • R.O. Water Purification Unit • 11 K V A power back-up for each apartment • VRV Air Conditioning with false ceiling in Living & Dining Room. • Wall Punning in Complete Flats |
| Kitchen | <ul style="list-style-type: none"> • Premium Modular Kitchen with Accessories (Hob, Chimney). • Vitrified tiles flooring • Ceramic tiles up to 2' above counter top, rest acrylic emulsion paint • Granite counter with double bowl stainless sink and drain board bathroom |
| Bathroom/
Powder Room | <ul style="list-style-type: none"> • Double Basin in toilets of master bedroom only in 4 bedroom apartments • Granite / Marble Counters • Shower cubical in all bathroom • Single lever CP fittings (Grohe / Kohler or equivalent) • Granite / Tile / Marble flooring |
| Main lobby | <ul style="list-style-type: none"> • Air conditioned ground floor lobby with designer furniture and luxurious décor • Imported Marble/Granite Flooring with impressive floor patterns |
| Elevators | <ul style="list-style-type: none"> • High speed lifts. Two passenger and one stretcher • Luxurious cab finishes of high quality |
| Complex Security | <ul style="list-style-type: none"> • Boomer gates, intercom system and manual patrolling at main gate • 24-hours digital video recording surveillance of building entry points • CCTV in secluded areas for continuous monitoring & recording |
| Amenities | <ul style="list-style-type: none"> • Driver Intercom & phone facilities • Dedicated super high-speed (wireless) Internet connection for Residents. • Driver waiting area in upper basement with facilities for refreshing |

Marble/ granite being natural materials is subject to variations in tone, grain, texture, colour and other aesthetic features. When laid, may result in certain amount of unevenness, due to its inherent property.

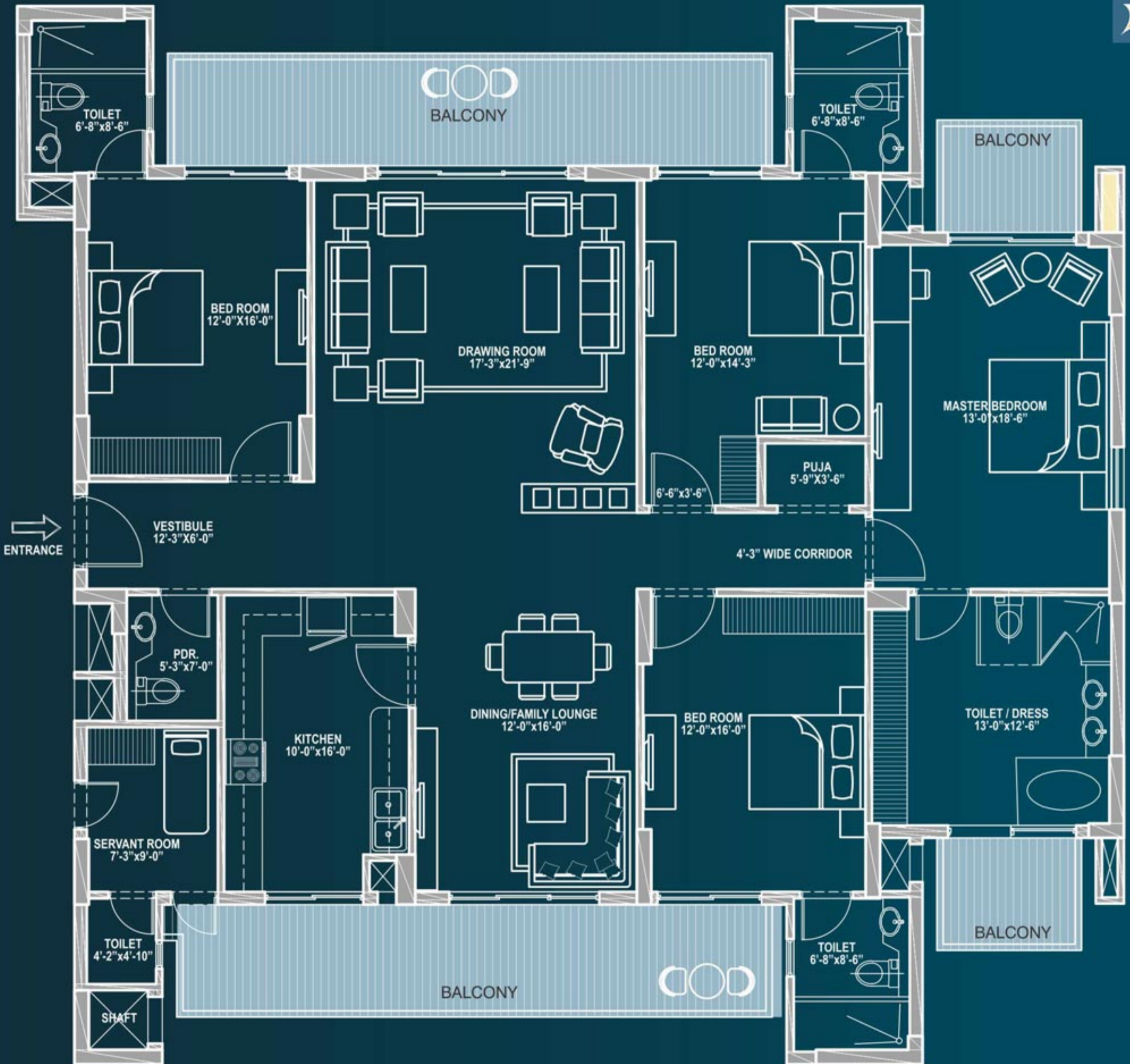
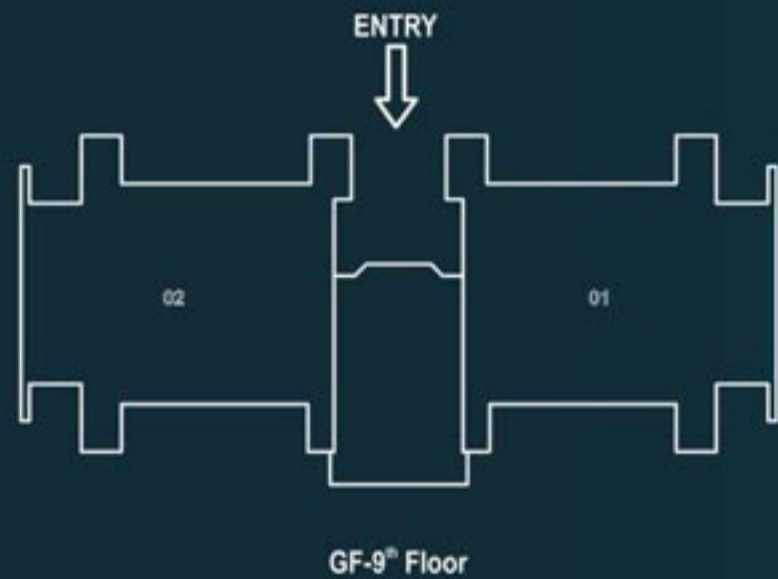
Note : All layout plans, floor and specifications are tentative and are subject to variation and modification as decided by company / relevant authorities and cannot form part of any offer or contract. Marble/ Granite being natural materials have inherent characteristics of color and grain variation



3 BEDROOM + S
 SUPER AREA : 278.2 SQ MT/
 2995 SQ FT



4 BEDROOM + S
 SUPER AREA : 324.7 SQ MT/
 3495 SQ FT





The complex offers grandeur of high end living where an air conditioned lobby of each tower welcomes you to the elegantly designed apartments. Possession to eight towers comprising of 386 apartments and penthouses is already offered and **more than 200 families have moved in as on 1 Jan 2015.**

Tower "F" is having exclusive 30 apartments of 3 BHK+SQ (2995 sqft) & 4BHK+SQ (3495 sqft). Exclusive tower is equipped with three high speed elevators and extend up to 14 stories offering only 2 apartments per floor. Each apartment is three side open with panoramic view and abundant natural day light.



Bestech Residential Projects



Located in Sector-48, Gurgaon, Total no of Apartment's-516, Possession offered in 2007, approx. 450 families moved in.



Located in Sector-67, Gurgaon, Total no of Apartment's-458, Possession offered in Q3 of 2013, approx. 150 families moved in.



Located in Sector-49, Gurgaon, Total no of Apartment's-434, Possession offered in 2008, approx. 380 families moved in.



Located in Sector-66, Mohali, Total no of Apartment's-184, construction in progress and Possession expected - Q1 2015.



Located in Sector-3, Gurgaon, Total no of Apartment's-680, Possession offered in 2010, approx. 600 families moved in.



Located in Sector-81, Gurgaon, Total no of Apartment's-710 and villas-13 construction in progress and Possessions expected - Q1 2015.



Located in Sector-7, Dharuhera NH8, Total no of Plots-440, Possession offered in Q3 of 2012.



Located in Sector-81, Gurgaon, Total no of Apartment's-591 and villas-5, constructions in progress and Possessions expected - Q2 2016.



Located in Sector-7, Dharuhera NH8, Apartment's-422, Possession offered in Q3 of 2012, approx. 220 families moved in.



Located in Sector-92, Gurgaon, Total no of Apartment's-624, Construction in progress and Possessions expected - Q1 2017.



BESTECH
cyber park

Located on NH8, Gurgaon. Total Built up area 5.5 lacs sqft approx. Possession offered in May 2010.

BESTECH
citygate

Located on NH8, Gurgaon. Total Built up Area 3.25 lacs sqft approx., Construction in Progress and Possessions is expected in mid-2016.

Orient - Bestech
BUSINESS TOWER

Located on NH8, Gurgaon. Total Built up area 6.5 lacs sqft approx. Possession offered in May 2013.

BESTECH
SQUARE

Located in Sector 66 Mohali. Total Built up Area 3.5 lac sqft approx. Ready for fit outs. Brand like Cinepolis, Food Quest, Woodland, Nike, Lotto, Archie's etc. already signed up.

BESTECH
BUSINESS TOWERS

Located on main Sohna Road, Gurgaon. Total built up area 7.5 lacs sqft approx. Possession offered in August 2012. Main Occupants Convergys, XL, Xerox, Salient etc.

BESTECH
BUSINESS TOWERS

Located in Sector 66 Mohali. Total Built up Area 7 lac sqft approx. Ready for fit outs. Schneider Electric has already running its office

BESTECH
CITY CENTER

Located on NH8 Dharuhera. Total Built up Area 1.27 lacs sqft approx. Possession offered in Q1 of 2013. Main Occupants-Sagar Ratna, Spencer, UCB, ERA Cinema, Allahabad Bank etc



LOCATION INSIGHTS

- 3 Mins drive from NH8 and 2 Mins drive from Medanta hospital
- 4 Mins drive from metro station
- Proposed Five Star Hotel in the vicinity
- In the vicinity of Cyber Parks, Hospitals, Hotels and High End malls. 20 Mins from IGI airport



Bestech India (P) Ltd., Bestech House, 124 - Sector 44, Gurgaon - 122002. Tel: 91 124-4540044, Fax: 91 124 4540033
 E-mail: sales@bestechgroup.com, Web: www.bestechgroup.com

LICENCE NO: 29 TO 37 OF 2005 DATED 25-07-2005, GRANTED IN FAVOUR OF MR. ROHTASH SINGH & OTHERS IN COLLABORATION WITH M/S BESTECH INDIA PVT LTD. 13.61 ACRE GROUPOUSING COLONY, BUILDING PLANS APPROVED VIDE MEMO NO ZP- 311/ AD(RA) /2014/19984 490 FLATS INCLUDING 74 EWS, COMMUNITY BUILDING, SHOPPING AND NURSERY SCHOOL AS PER APPROVED ZONING. ALL APPROVALS ARE AVAILABLE FOR PERUSAL AT CORPORATE OFFICE. 1 ACRE=4048 SQ M, 1 SQ M=10.764 SQ.FT.

Visual representations shown in this brochure are purely conceptual. All Building Plans, Specifications, Layout Plans etc. are tentative and subject to variation & modification by the company of the competent authorities sanctioning plans. Diagrams are not to scale.