



SKYSHUBHAM

Where Altitude Defines your Attitude!

TO KNOW MORE ABOUT THE PROJECT



2 & 3-BHK | 713 UNITS | BDA APPROVED

TOWER A:GROUND+14 FLOORS | TOWER B:GROUND+ 12 FLOORS

Kempegowda Main Road, Hallehalli, K.R. Puram, Bengaluru- 560049

MESSAGE FROM THE CHAIRMAN

I fully understand that a home is a life-time investment, and so we wish for a maximum value-add from our new home, and even if it is for investment purposes, there should be a marked return on the investment we make. From both these aspects, DS-MAX SkyShubham is a pot of gold and is equally attractive for the first-time homeowner and the most speculative real estate investor.

The location is at a spot where the incremental rate of property prices is the highest, with a natural growth of social infrastructure with all amenities at a stone throw distance. The connectivity to all the IT Parks and hubs of the city is superb, ticking the demand of your property ever on the higher side. Added to that, we would not be leaving any stone unturned to build it as one of the most comfortable modern habitats, making it the cynosure of the eyes of every passerby. With all that being said, I cannot but appreciate your taste, preference, and prudence as you have chosen one of the best properties that would add maximum value to your life and wealth.



Dr. K V SATISH
(Chairman & MD of DS-MAX Properties)

PRM/KA/RERA/1251/446/PR/210312/004002



Where Altitude
Defines your Attitude!

PAMPER YOURSELF WITH LIMITLESS LUXURY!

DS-MAX SkyShubham, located near the Garden City University with its G+14 structure on an ample stretch of land, is an exquisite habitat for the people who are elite in their tastes and preferences. Situated right at the heart of K R Puram, with a plethora of super-luxury amenities, DS-MAX SkyShubham has 713 two and three - BHK apartments amply spaced and ventilated to offer you a regal lifestyle. With amenities like a swimming pool, amphitheater, dedicated sports area, children's play area, senior citizens' area and many others, the lifestyle at this skyscraper is simply regal. This aesthetically built architecture's redeeming feature is its livability with all amenities that would elevate your lifestyle to a never-before scale.





Coupled with all this are the convenience, comfort and ease of connectivity at the superb location of DS-MAX SkyShubham, which are few of the attractive features of this palatial structure. Not only would it render a highly utilitarian lifestyle, but as all the infrastructure like schools, colleges, shopping centres, malls, and all others that you would need is at arm's length, DS-MAX SkyShubham offers you the life of your dreams in all senses of the term. Added to this, a low population density on an ample stretch of land with a diaspora of super-luxury amenities would purport you to a land of dreams. The hallmark of DS-MAX Prices which are lower than the market rates make it more delectable and attractive for the home seekers.

OUR SCORE CARD

Google Rating

April 2022

Based on 2,396 + reviews

 **4.1 / 5.0**

We are grateful to our customers for rating us 4.1 out of 5 on Google as that gives us ample room for improvement. However satisfied our customers may be, as many have rated us 5 out of 5, but we make it a point that we are never content with what we deliver. We always want to give even more with a constant eye on continuous improvement in all aspects of the services we render to you, our beloved customers. With that in mind, we assure you

that we won't keep any stone unturned to make you happy and relish the Joy of Living in our homes to the fullest.

INTERNAL SURVEY RATINGS

Best Price	On Time Delivery	Best Construction Quality	Transparent Practices	After - sales Support
				
5.0 / 5.0	4.5 / 5.0	4.7 / 5.0	4.7 / 5.0	4.7 / 5.0

OUR CREDENTIALS

20,000+ Customers | 100+ Projects | 130+ Awards | 500+ Quality Checks

30+ Bank Partnerships | ISO Certified Quality Practices | Standardised Construction Practices

RERA Compliant Projects | BBMP / BDA / BMRDA / BIAPPA Approved Projects

Lifetime Support and Assurance



JOGGERS'
TRACK



AC PROVISION
FOR MASTER
BEDROOM

GYM



PARTY HALL



COVERED
CAR PARKING



POWER BACKUP

20+ LUXURIOUS AMENITIES

Each code has an exciting story behind it.

SCAN TO ENJOY IT!

LUXURY & MODESTY?

Unquestionably goes hand in hand, only here!



Ms. Amitha Sanjay
DS-MAX SAVERA



KUSHI & KEYS

Or is it the key to Kushi? Scan to know!



Mr. & Mrs. Gowtham
DS-MAX SPARKNEST



HOUSE OR SPOUSE

Nothing beats the pride of calling them yours!

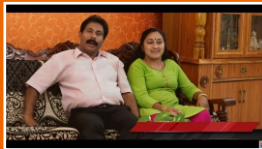


Mr. & Mrs. Prathyush
DS-MAX SKYCLASSIC



A BUILDER OR A COMPANION?

Once an owner, always a family member!

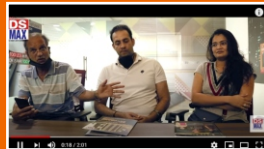


Mr. & Mrs. Anil Kumar
DS-MAX SKYSCAPE



TEMPORARY OR PERMANENT

If the former is an opportunity to secure the latter?

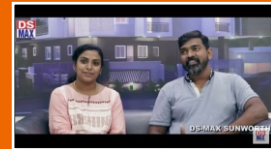


Mr. & Mrs. Vinod
DS-MAX SKYCLASSIC



HOME OR SAFETY?

What if it's both coupled with love!



Mr. & Mrs. Verghese
DS-MAX SUNWORTH



Office Address: #1797, 14th Main Road, 5th Block,
Brindavan Nagar, HBR Layout, Bangalore – 560 043.



+91 8880 189 000



www.dsmaxproperties.com