

AJMERA
PRIVÉ

J U H U

LEAGUE OF
THE EXTRAORDINAIRE

A P R O J E C T B Y

**INDIA'S LEADING
MULTI-NATIONAL
REALTY
CORPORATION**



A Track Record of Performance & Eminence

Having established over 54 years, Ajmera Group is recognized as one of India's leading Real Estate Company. The reach and interest of the Ajmera Group has only grown with time and has extended to other realms, such as solar power, sports, vaults security, cement and social welfare. The company now has a strong presence in and around Mumbai, Pune, Ahmedabad, Surat, Rajkot and Bangalore as well as an international project in Bahrain and London.

Quality, innovative construction technology, comfort, aesthetic appeal and maximum value for your money are few attributes that enrich Ajmera with the belief that people have entrusted in them.



Evolved Locations & Brought
Lifestyle Transformation.

54+ YEARS
LEGACY

30+
MILLION SQ. FT.
DELIVERED

PRESENCE IN
6 CITIES
2 COUNTRIES

1ST MALL
WITH MULTIPLEX
IN MUMBAI 2001

47
MILLION SQ. FT.
UNDER DEVELOPMENT

45,000+
HAPPY FAMILIES

DEVELOPED
WADALA AS A PRIME
RESIDENTIAL BELT WITH
AJMERA I-LAND

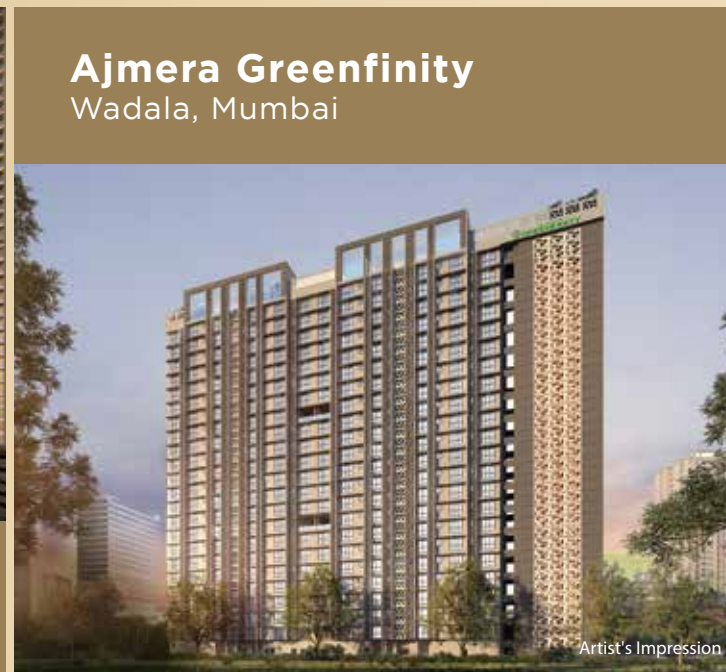
ESTABLISHED
AJMERA GLOBAL SCHOOL (2006) &
AJMERA ICSE SCHOOL (2015)

54 Years of Transforming Lives & Localities.

DELIVERED PROJECTS



Ajmera Manhattan
Wadala, Mumbai



Ajmera Greenfinity
Wadala, Mumbai



Ajmera Arham
Malad, Mumbai



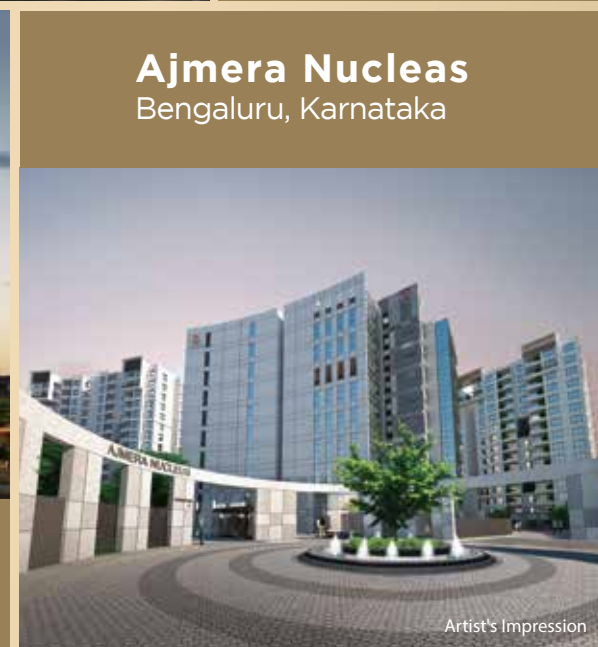
One Kalyan
Shahad



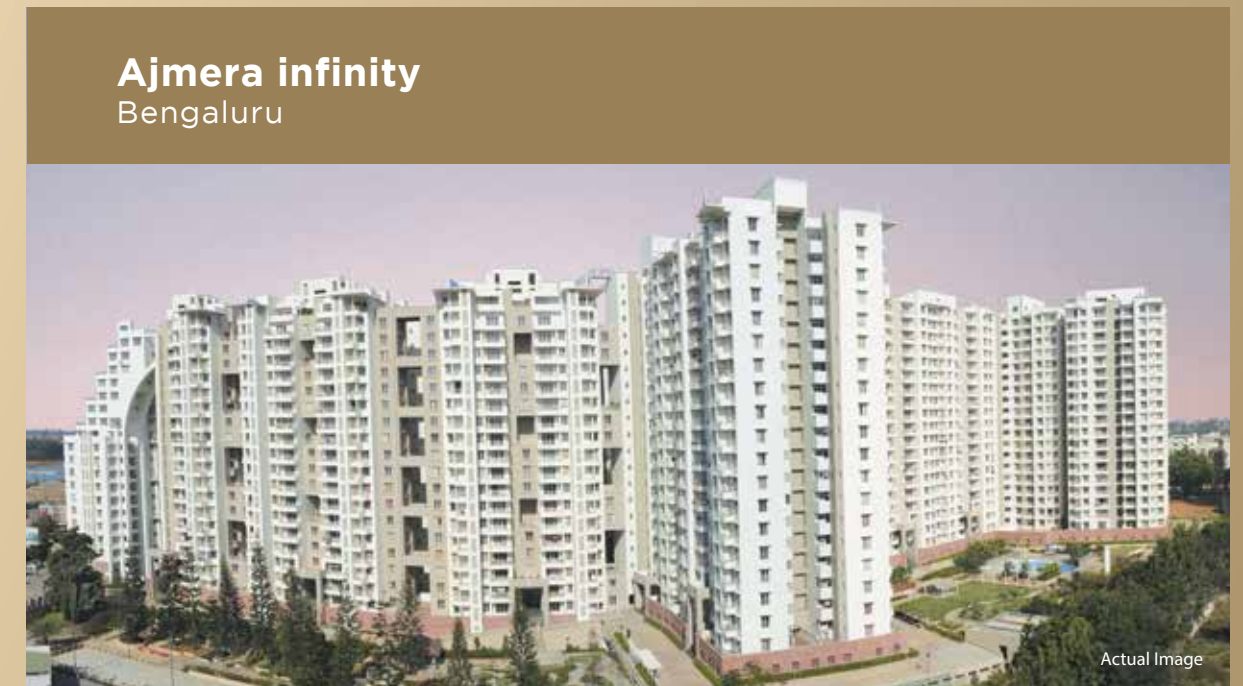
Ajmera Exotica
Wagholi, Pune



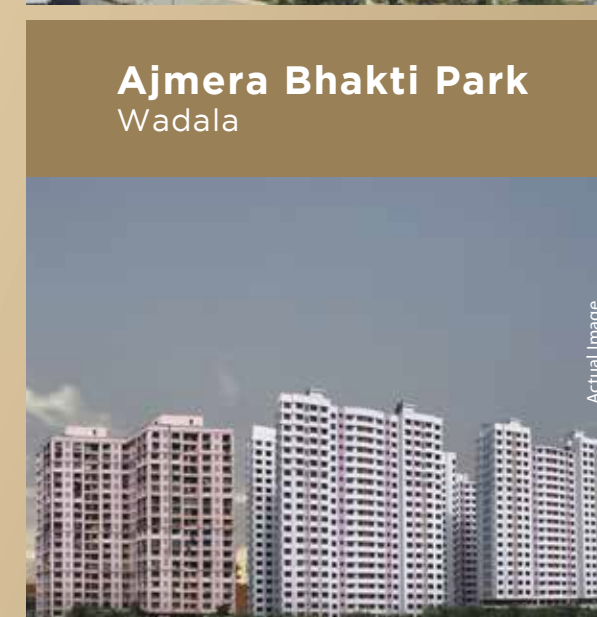
Ajmera Sikova
Ghatkopar, Mumbai



Ajmera Nucleas
Bengaluru, Karnataka



Ajmera infinity
Bengaluru



Ajmera Bhakti Park
Wadala



Casa Vyoma
Ahmedabad



Ajmera i-Land (Aeon, Zeon, Treon)
Wadala

All the projects have been registered under RERA & MahaRERA

WHEN EVERY MOVE
YOU MAKE BECOMES
A BOLD STATEMENT,
AND EVERYTHING
YOU WEAR BECOMES

The Signature Style.


WHEN EVERYTHING
YOU DO BECOMES
THE NEXT TREND,
AND WHEREVER
YOU GO BECOMES

The Hotspot.



WHEN YOUR EVERY DAY
IS LIKE AN ESCAPE.
YOU DESERVE THE

Most Iconic Lifestyle

An aerial photograph of Juhu beach in Mumbai, India. The image shows a long, curved beach with waves breaking on the shore. To the right of the beach is a dense urban area with many buildings, including a large airport terminal and a runway. The sky is clear and blue. The text is overlaid on the left side of the image.

WHEN IT'S JUHU'S
MOST DESIRED
LOCATION,
IT'LL BE HOME TO THE ELITES.



Glittering with Stardust. Brimming with Conveniences.

Juhu has always been an address for the privileged. Right from posh social avenues to high-end malls, from reputed educational institutions to world-class healthcare, you find everything right outside your doorstep. Also, it enjoys superior connectivity that brings the city closer to you.

- Parks, Gardens and Juhu Beach
- 5 Star Hotels, Restaurants, Clubs
- Retail, Multiplexes
- Schools, Hospitals

A
R
A
B
I
A
N
S
E
A

Juhu Beach

Juhu Beach



AJMERA
PRIVEE

Pink Wasabi

Pvr Premiere Juhu

Iskcon Temple

Utpal Shanghvi Global School

KRVIA

Kaifi Azmi Park

Ecole Mondiale World School

CD Barfiwala Road

Criticare Hospital

Advanced Multispeciality Hospital

Sardar Vallabhbhai Patel Park

Pratiksha

Arogya Nidhi Hospital

Haveli Temple

Kishor Kumar Park

Millennium Club

Chin Chin Chu

Novotel Mumbai

Cosmopolitan Education Society Marg

Gulmohar Road

DJ Sanghvi College

Alfredo's

Prithvi Theatre

Jamnabai Narsee School

Jalsa

Tulip Star

Juhu Joggers Park

Ontoes

Gajalee

NMIMS

NM College

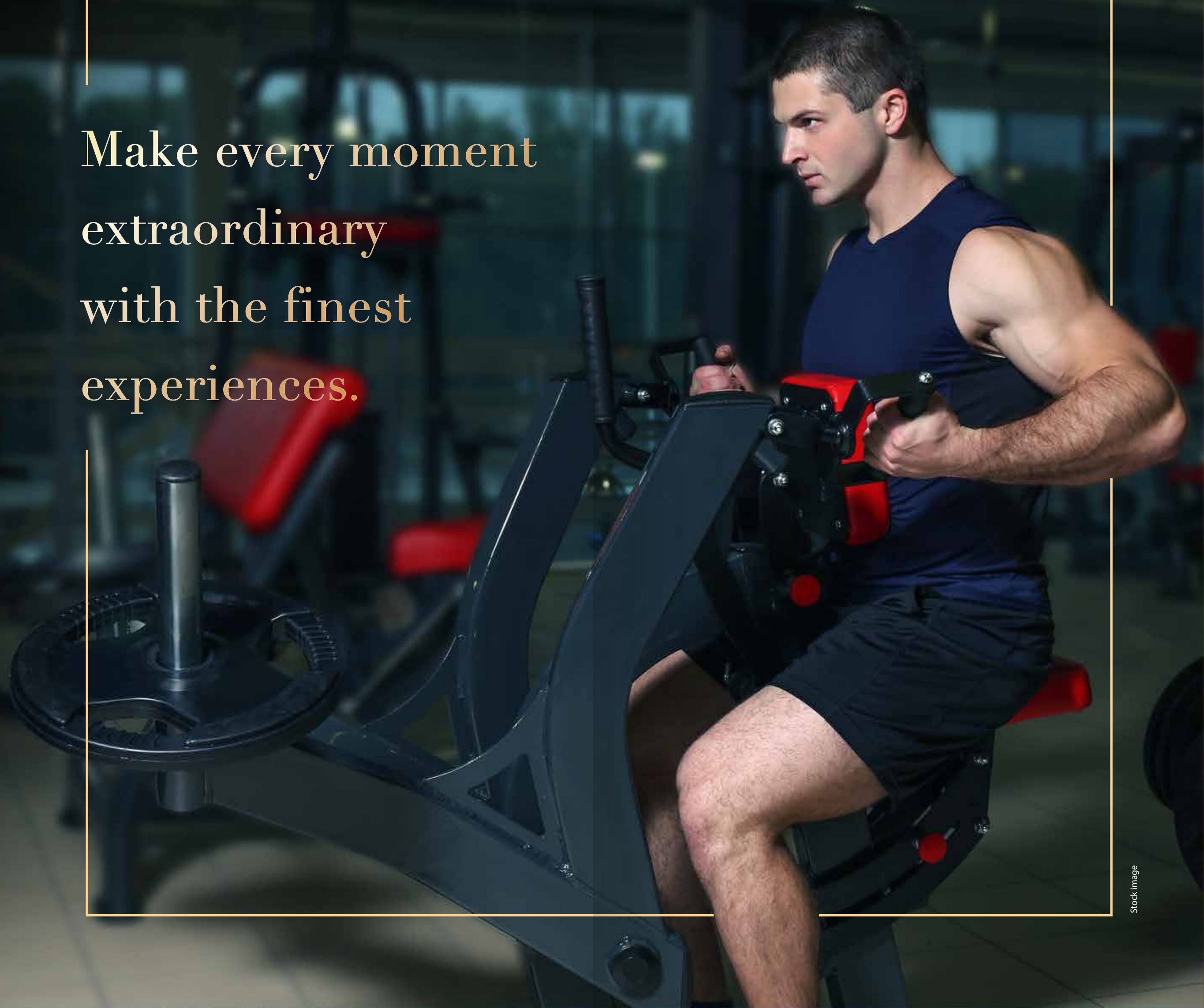
Mithibai College

JW Marriott

Ramada Plaza

Pawan Hans

Make every moment
extraordinary
with the finest
experiences.



Carve the best version of yourself
with a fully equipped gym.





Stock image

Cherish the wealth of health
with world-class fitness centre.



Limitless fun and great times await
you at the indoor sports room.

Landscaped area with nature's
delights to rejuvenate you each day.



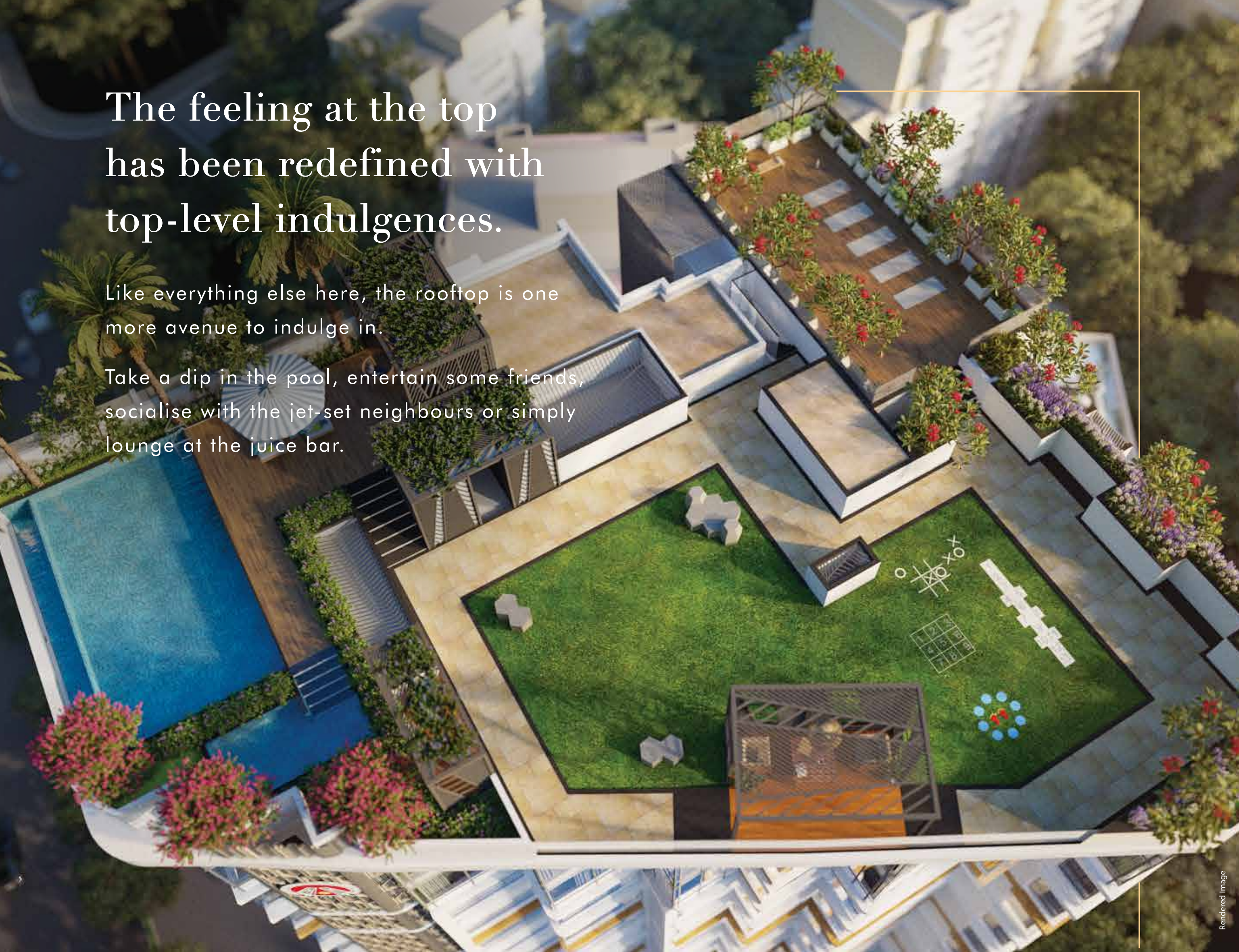
Cherish luxuries at
their prime and at
the peak with
terrace amenities.



The feeling at the top has been redefined with top-level indulgences.

Like everything else here, the rooftop is one more avenue to indulge in.

Take a dip in the pool, entertain some friends, socialise with the jet-set neighbours or simply lounge at the juice bar.



- Leisure Plaza
- Park View Pavilion
- Floor Game Plaza
- Senior Citizens

- Plaza
- Multi-purpose Deck
- Utility Area
- Swings Plaza

- Swings Plaza
- Entertainment Pavilion
- Pool Area

- Pool Deck
- Infinity Edge
- Jacuzzi

The first of its kind utility area
offering fun for everyone.





Rendered Image

A multi-purpose deck that will make you fall in love with something new.

Intricately
Designed for
Moments that
are Truly
Extraordinaire.



A Majestic Entrance Lobby
to Welcome You with Grandeur.





Rendered Image

Brighten Up Your Daily Life with
Elegance and Extravagance.

Savour All the Delights of
Modern Living at its Best.



Home to The
Extraordinaire is
Bedded with
Utmost Comfort.



Rendered Image

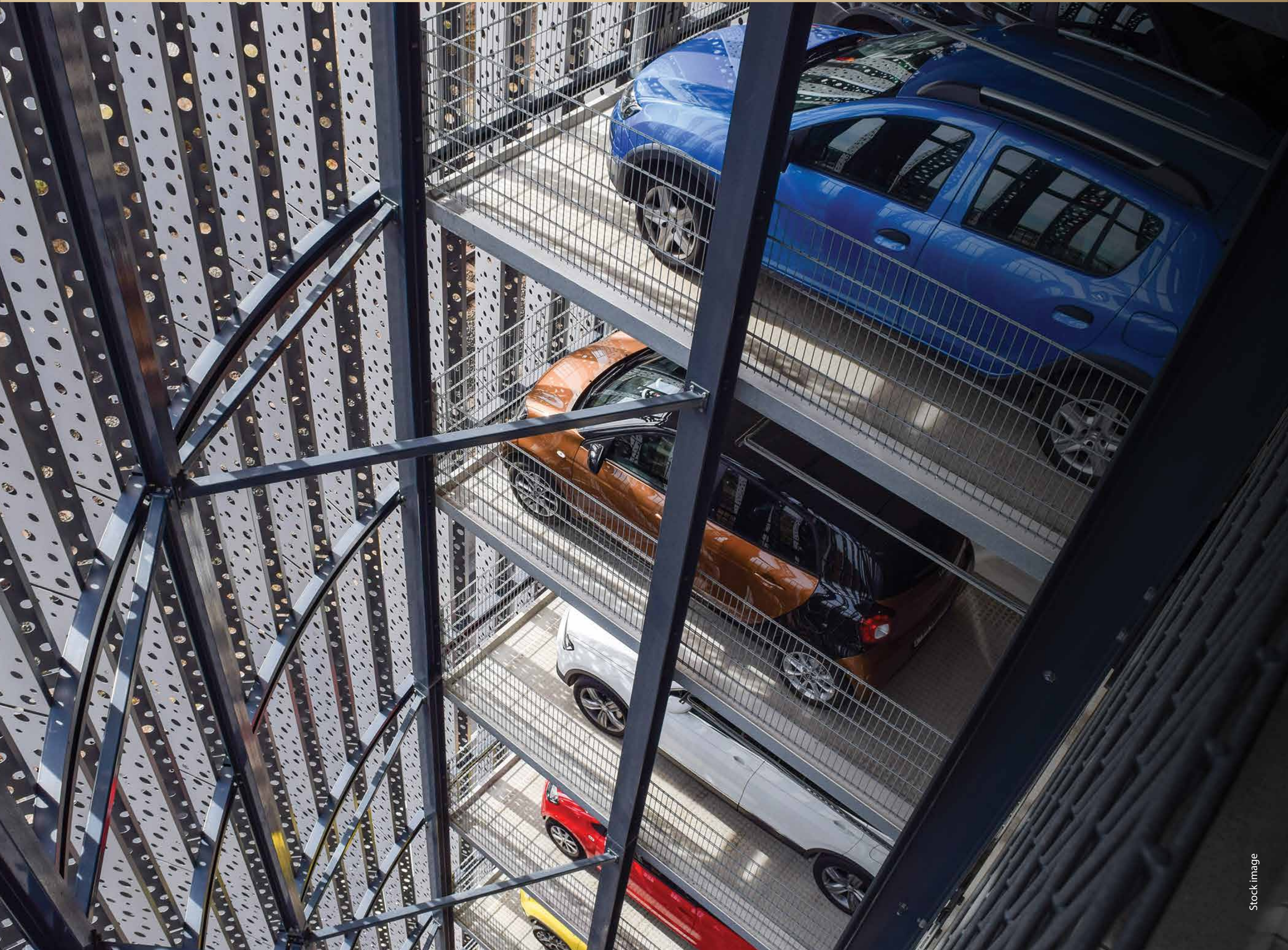


Rendered Image

The Finest of
Global Brands Design
Every Corner of
Your Abode.

A world-class Automated Parking System

- Space efficient installation of car parking.
- Customised as per the master plan.
- Safety devices such as parking guidance lamps, emergency stop switch and photo sensors.
- Operated by a central computer via touchscreens.





*A Testament
of Architectural
Brilliance for
the Extraordinaire.*

Thoughtfully Designed for Extraordinary Living.

UNIT NO. 03

Caret Area	sq.m.	sq.ft.
RERA	161.01	1733



UNIT NO. 02

Caret Area	sq.m.	sq.ft.
RERA	193.08	2078

UNIT NO. 01

Caret Area	sq.m.	sq.ft.
RERA	112.55	1211



2D VIEW



3D VIEW



3 BHK GRACE

UNIT NO. 01

	sq.m.	sq.ft.
Caret Area	112.55	1211
RERA		

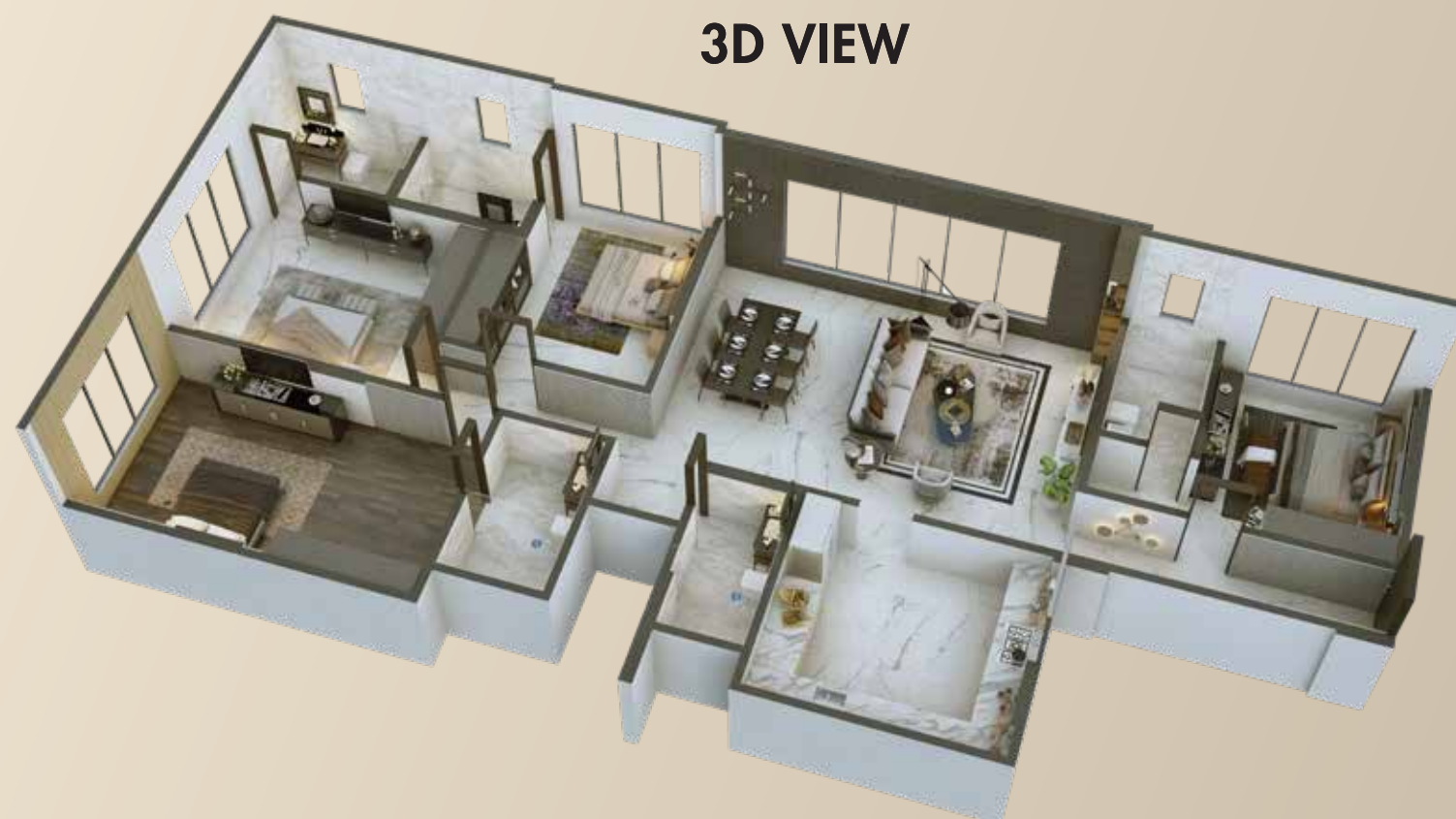
2D VIEW



UNIT NO. 03

Caret Area	sq.m.	sq.ft.
RERA	161.01	1733

3D VIEW



4 BHK GLIMMER



2D VIEW



3D VIEW



4 BHK (L) GRAND

UNIT NO. 02

Caret Area	sq.m.	sq.ft.
RERA	193.08	2078



Claim
Your Glory
at The Most
Iconic landmark
of Juhu.



PRESENTING

AJMERA
PRIVÉ

10TH ROAD, JUHU

3 & 4 Bed Premium
Residences

- Prestigious Locale of Juhu
- 12 storey tower of 3 & 4 bed residences
- Grand entrance lobby
- Spectacular sky level lifestyle amenities
- Impressive mid-level amenities
- Landscaped areas



INDIA'S LEADING
MULTI-NATIONAL
REALTY
CORPORATION



The project is registered with MahaRERA under registration number P51800047174 and is available on the website <https://maharera.mahaonline.gov.in> under registered projects.

Disclaimer: All specifications, designs, facilities, dimensions etc. are subject to approval of the respective authorities. The developer reserve the right to change the specification or features without any notice or any obligation.