



#TheBetterLife

now comes to **Hinjawadi**

2 BEDROOM RESIDENCES

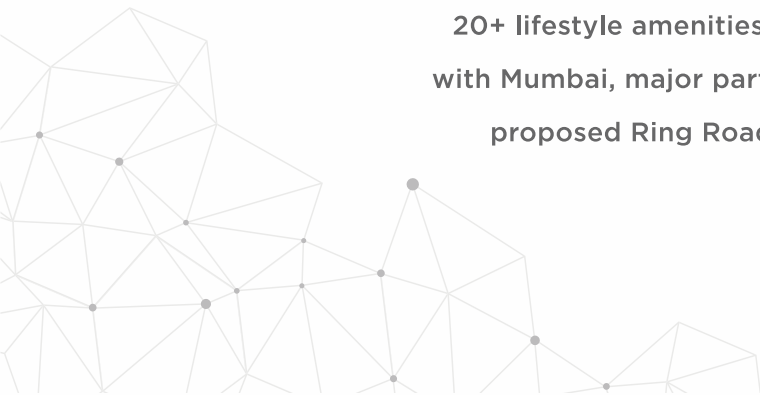
About Pride Purple Group

- 19 Years of legacy
- 50+ Successful Projects
- 30 Million sq.ft of premium real estate delivered

Pride Purple Group has been transforming Pune's skyline with top of the class residential and commercial projects for almost 2 decades now. Known for their excellence in construction standards, meticulous designs, and fulfilling features, the group has raised some of the most spectacular structures for Puneites. After defining Pune's real estate, they are now bringing #TheBetterLife to Hinjawadi!

The Project

Part of a 100 Acre development, this Park Connect has 2 BHK homes with 20+ lifestyle amenities. Add to it the advantage of excellent connectivity with Mumbai, major parts of Pune, upcoming Maha Metro, proximity to the proposed Ring Road, and you have a home that facilitates every need.



#TheBetterLife

Located in Hinjawadi-Marunji Link Rd, the project literally enjoys superb connectivity to your convenience avenues and to the all other places of interest.

An aerial photograph of a city skyline, likely Pune, India, featuring prominent skyscrapers. Overlaid on the image is a digital network of white lines connecting various points, with several white location pin icons at the nodes, symbolizing connectivity and convenience.

Connected to
Conveniences



Connected to **Fitness Regime**

Dedicated fitness amenities to ensure
you never forget your goals.

Stay connected and safe with your kids with multi-layered security, vehicle-free zones & other such security features.



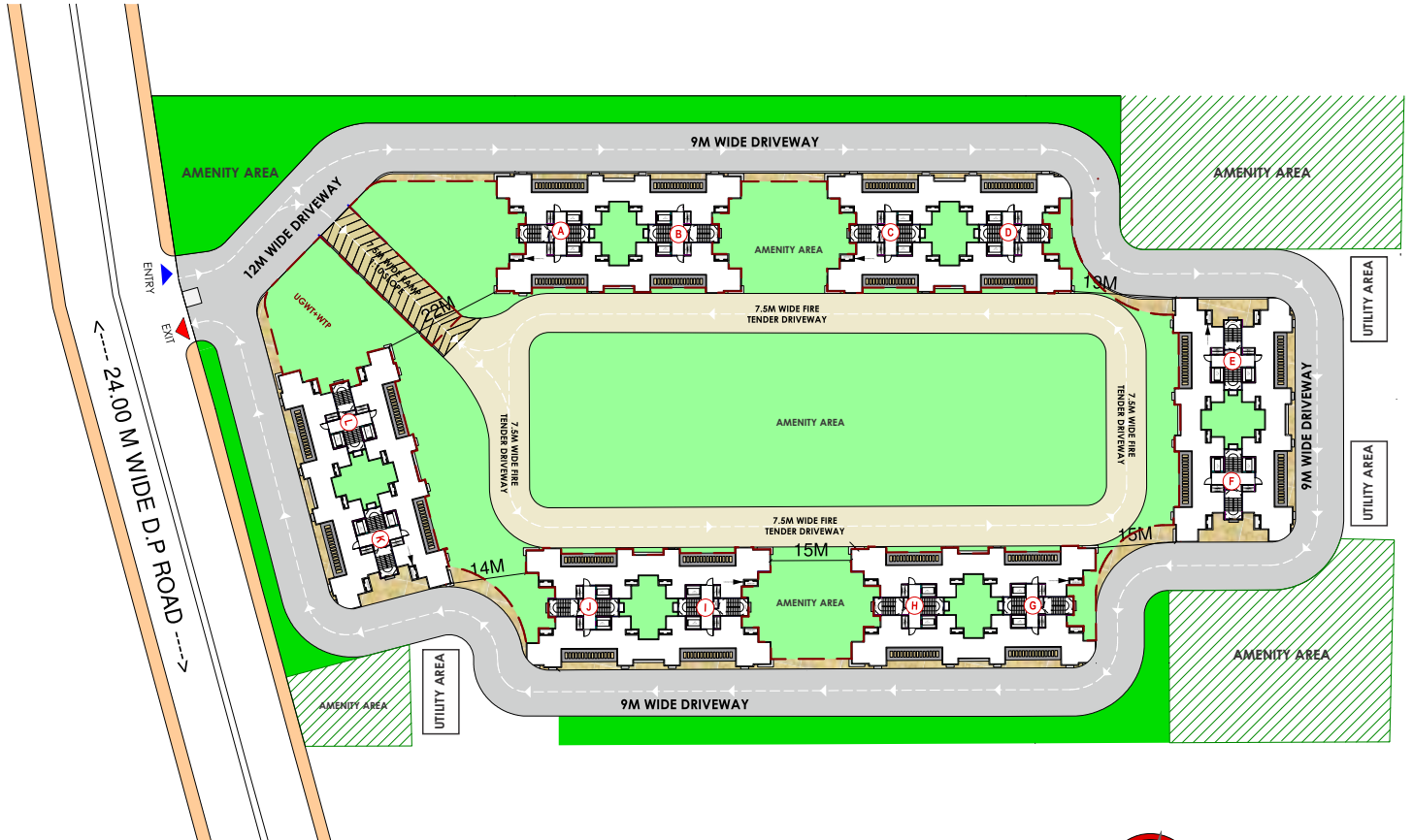
Connected with a
Safety Net

Right from casual meet-ups to common celebrations,
everything will be on your fingertips.

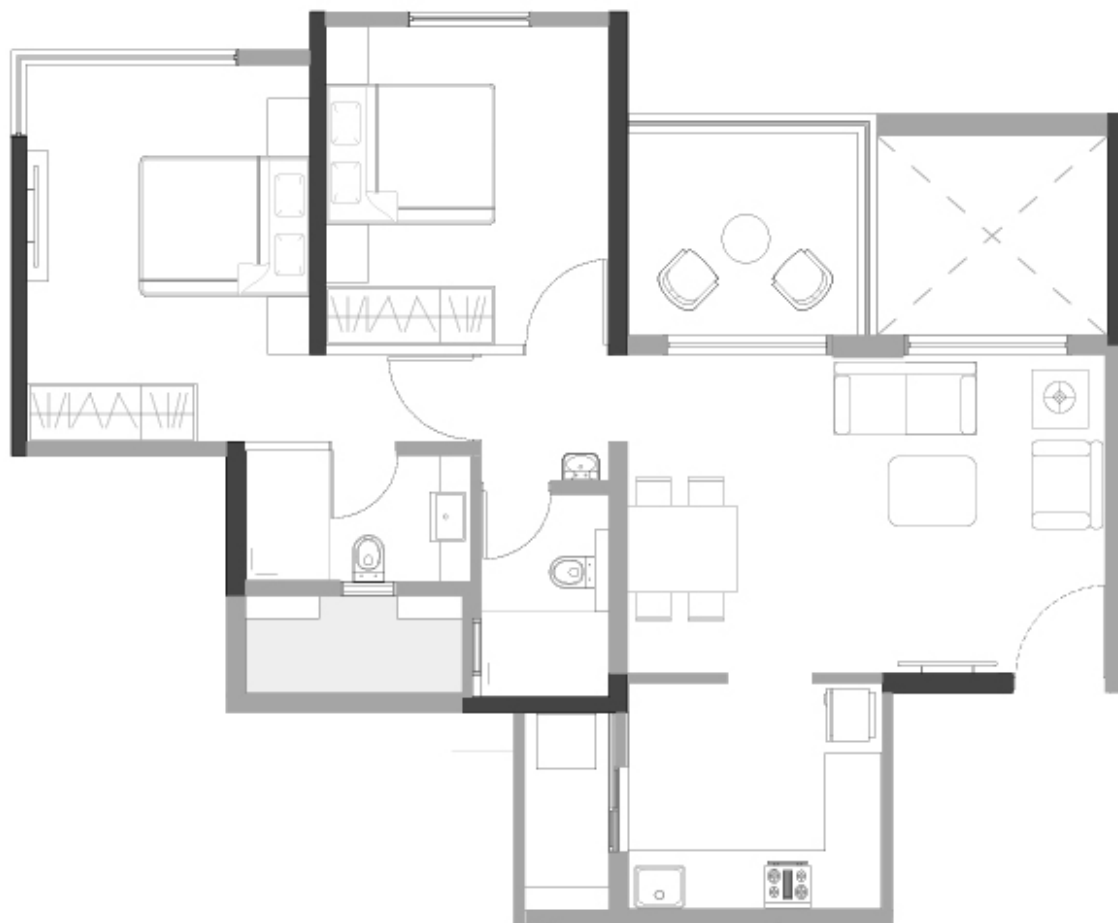


Connected
Community

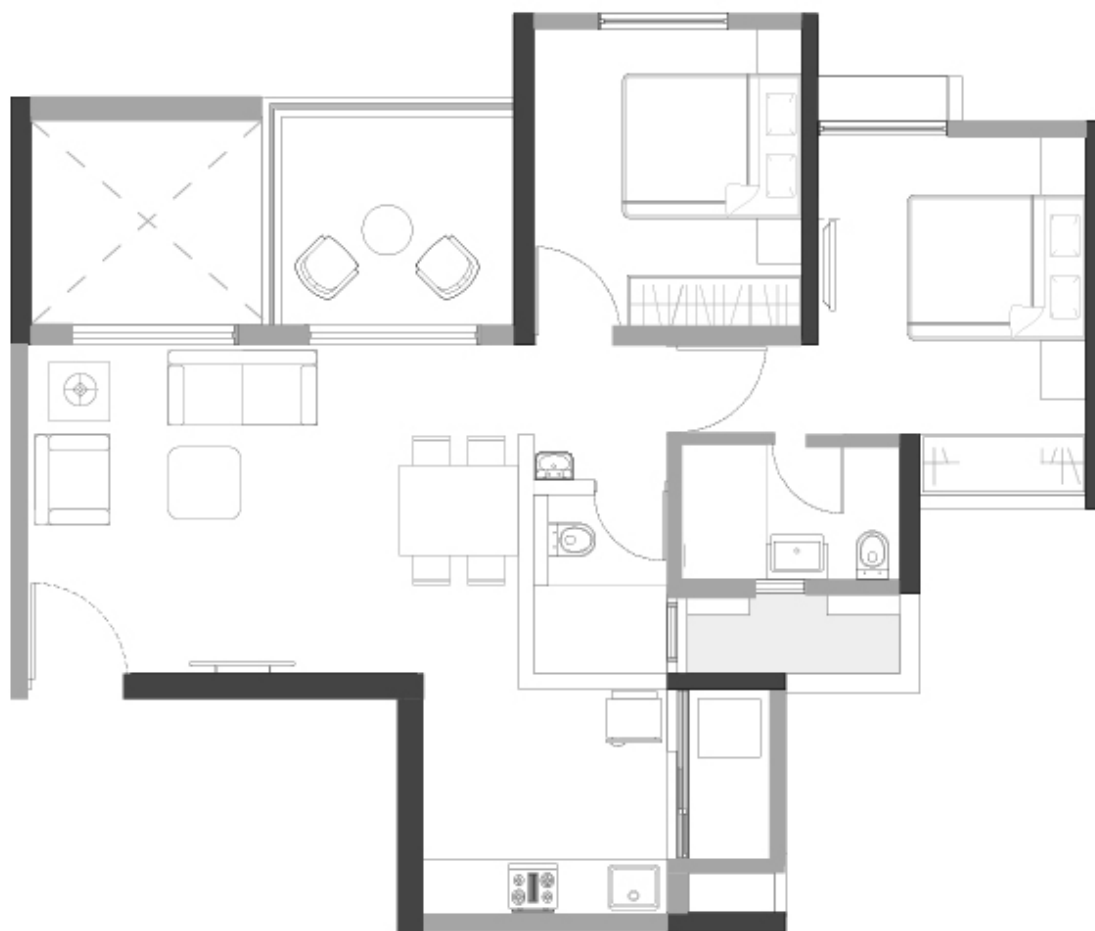
MASTER PLAN



FLOOR PLAN- 1



FLOOR PLAN- 2



Approximate Configuration & Prices

CARPET AREA	PRICE
625 sq.ft - 675 sq.ft	₹ 49 - 52 Lac
700 sq.ft - 750 sq.ft	₹ 56 - 59 Lac



- 20+ Amenities
- 60% Open Spaces
- 3 Tier Security
- 4 Apartment Each Floor
- All Covered Parking
- Special Zone For Kids & Grand Parents

When are you adopting **#TheBetterLife**



PRIDE PURPLE INFRASTRUCTURE

Corporate Address : 5th Floor, Pride House, 108, Ganeshkhind Road, Near Pune University, Pune - 411016

Site Address : At Post Marunji S.No 40, 41 Near Laxmi chowk, Taluka Mulshi District Pune - 411057

Web : www.pridepurpleproperties.com



The project has been registered via MahaRERA No. P52100020766 and is available on the website <https://maharera.mahaonline.gov.in> under registered projects