



**PARAMOUNT**

GUIDED BY TOMORROW

 **golfforesté**



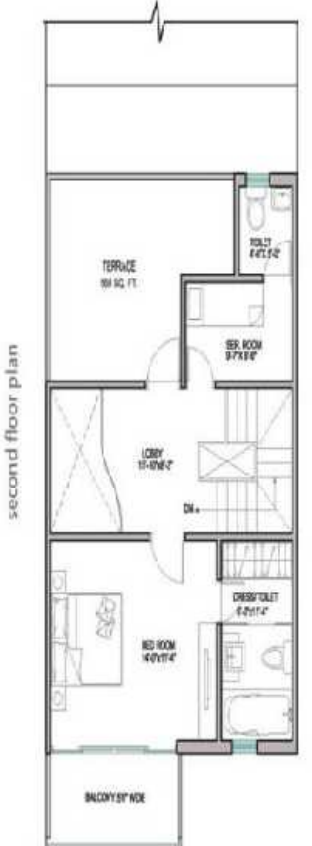
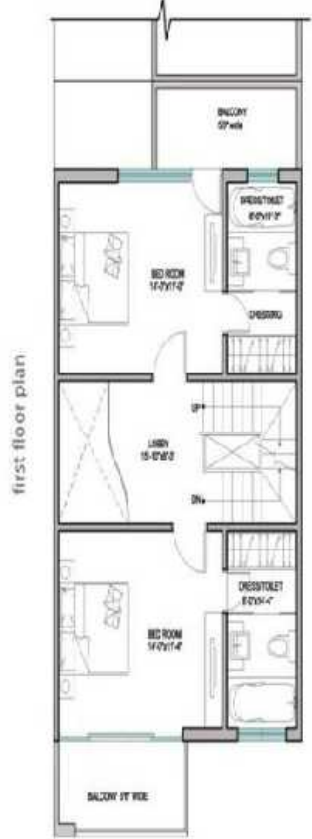
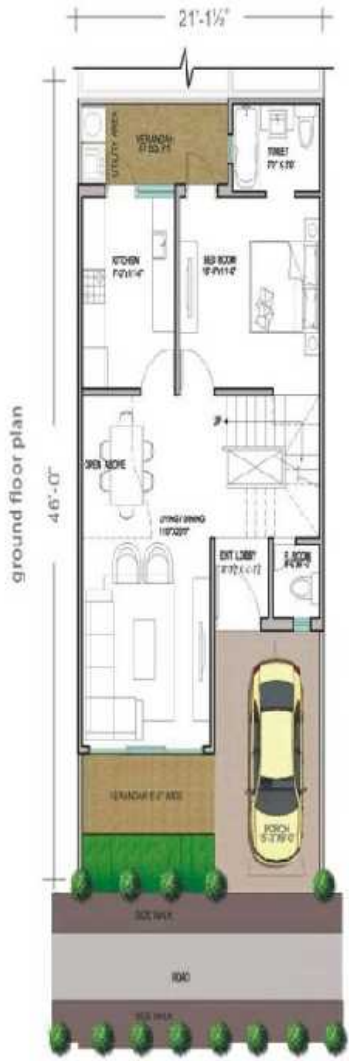
TYPE - A

G+2  
 villa: 157.4 sq.yd.  
 total saleable  
 area = 3008 sq.ft.  
 4 bedroom + servant + utility terrace  
©2011 HOK USA, Inc.



# TYPE - B

G+2  
 villa: 108.0 sq.yd.  
 total saleable  
 area = 2452 sq.ft.  
 4 bedroom + servant  
 (back to back)





## TYPE - B

G+2 villa: 108.0 sq.yd. • total saleable area = 2220 sq.ft.  
 3 bedroom + servant + 1 bedroom (expandable) (back to back)



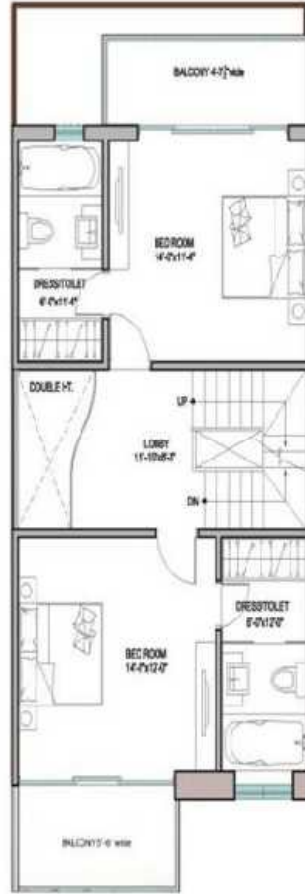


# TYPE - C

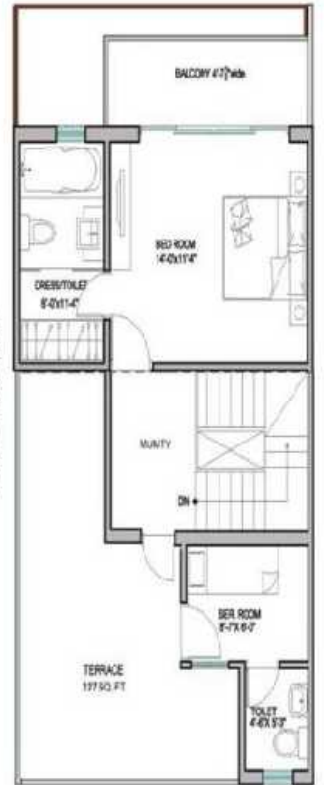
G+2  
 villa: 108.0 sq.yd.  
 (rear side golf/forest)  
 total saleable  
 area = 2485 sq.ft.  
 4 bedroom + servant  
 (golf/ins: foreste facing)



first floor plan

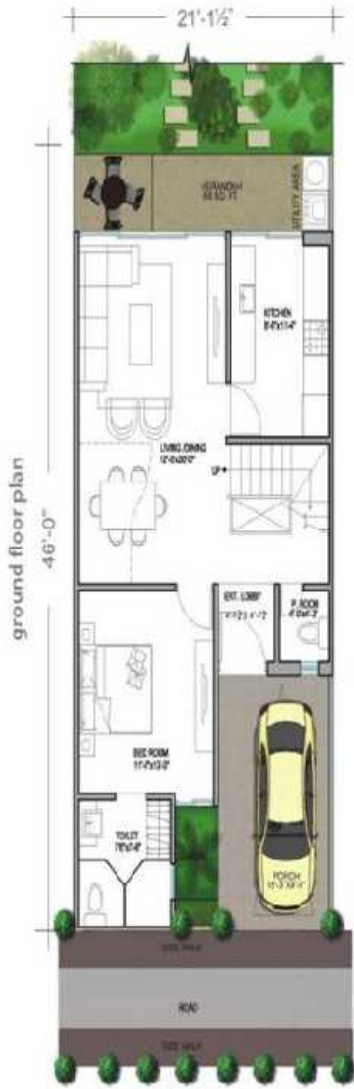


second floor plan

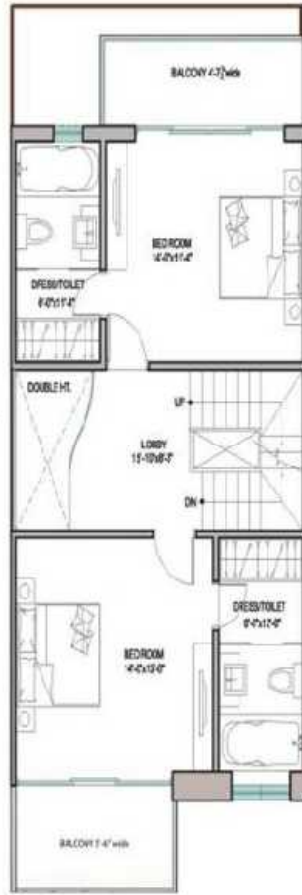


# TYPE - C

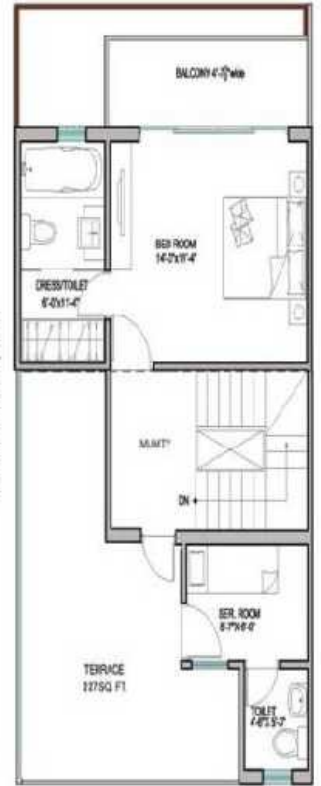
G+2  
 villa: 108.0 sq.yd.  
 rear side golf/forest  
 total saleable  
 area = 2185 sq.ft.  
 3 bedroom + servant  
 (golf/linear foreste facing)



first floor plan

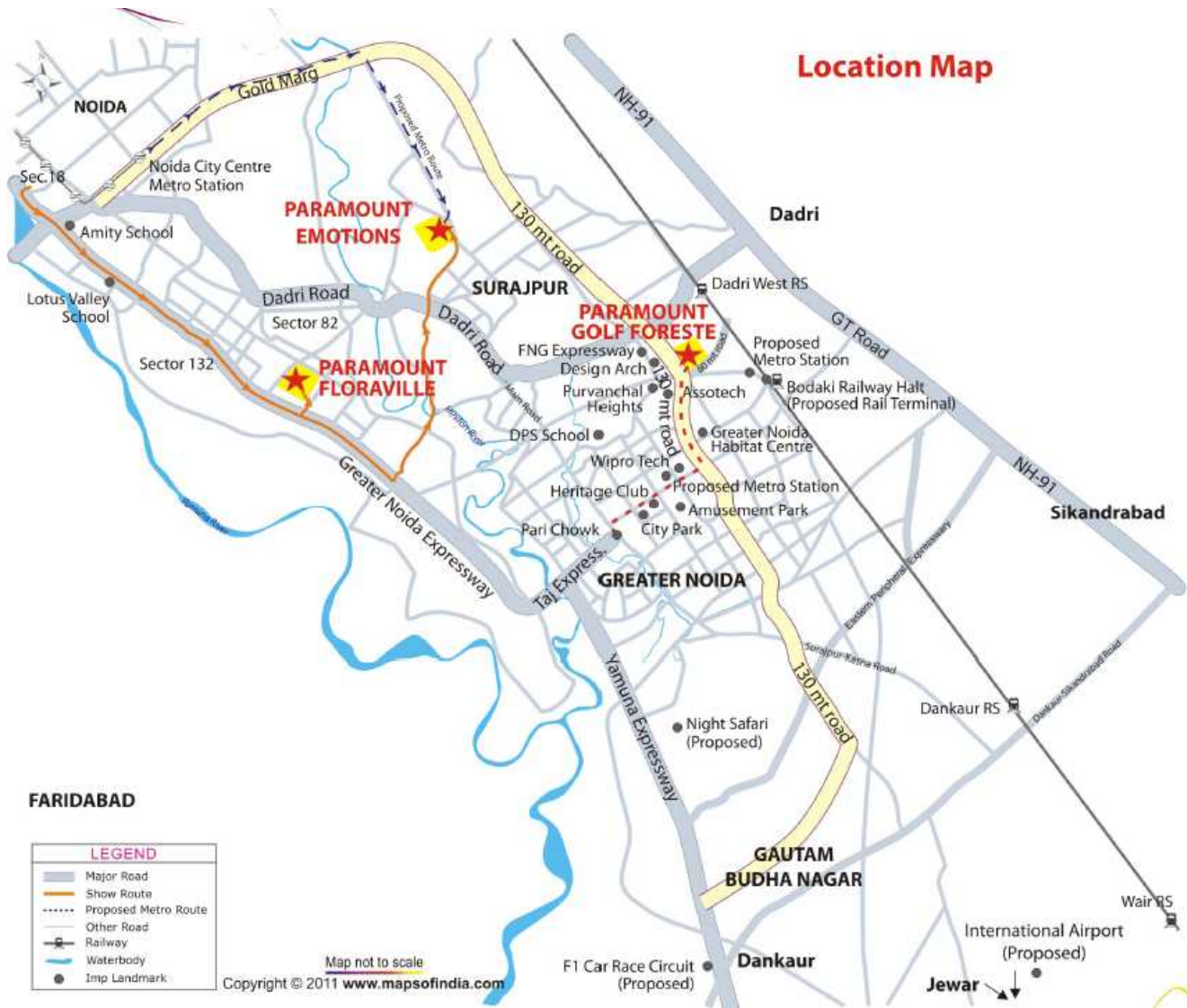


second floor plan





# Location Map



## FARIDABAD

LEGEND	
	Major Road
	Show Route
	Proposed Metro Route
	Other Road
	Railway
	Waterbody
	Imp Landmark

Map not to scale  
 Copyright © 2011 [www.mapsofindia.com](http://www.mapsofindia.com)























