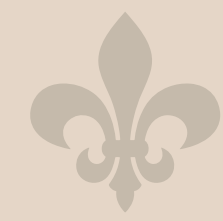




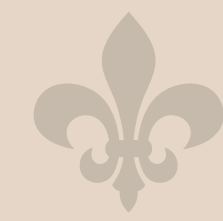
SUPREME[®]
ALORA
KHAR WEST

3 & 4 BED PRIVATE FLOOR RESIDENCES

 PRIVACY TAKES THE FLOOR 



Unfold the gates
to your dream home in heaven





SUPREME[®]
ALORA
KHAR WEST

3 & 4 BED PRIVATE FLOOR RESIDENCES

Privacy takes the floor



Khar has a lot going for it. It's close to the sea, shopping, clubs, and practically everything else you could ever need. It's this very quality that has drawn thousands of people to this beautiful neighbourhood.

Today, you can get everything you need in Khar...
everything except privacy.

We designed Supreme Alora with the mission of returning this rare luxury to homes in Khar. The homes in Alora have been designed to surround you with sprawling spaces and green landscaping, in order to safeguard your personal space from the bustle around.



Map not to scale.

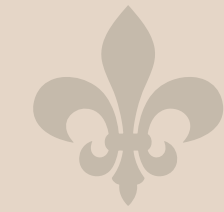
The luxury of privacy moves to Khar



Supreme Alora is situated in a beautiful plot of land, at the junction of Pali Mala Road and 19th Road. The property is a short walk away from Khar Gymkhana, Linking Road on one side, and Pali Hill and Carter road on the other



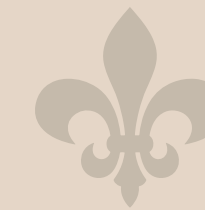
Your exclusive access
to a world called home



Drive in through the gates, past an exquisitely landscaped garden that forms your own private oasis. The project features an elegant glass facade that lets in natural light and charming views of the garden to put you at ease.



The height of luxury

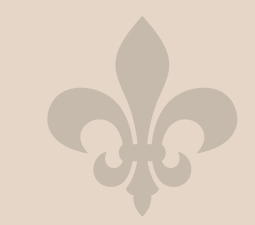


The lobby has been designed to elevate the joy of homecoming as soon as you step in. It soars twice as high as standard ceilings, to envelope you in an aura of space and peace. Soothing greens of the landscaped garden beckon invitingly through the glass lobby walls.



Artist's Impression

Private pool party
anyone?



A tranquil swimming pool on the terrace is
laced with deck chairs and a counter for food
and beverages. For an unforgettable meet up
during the day or night, just add friends!



Artist's Impression

Air, water and earth
at your service



An exclusive rooftop retreat has been
designed to offer you a quick getaway
whenever you need a break.



Image is for representation purpose only

Exercise your
right to privacy



A well-equipped gym greets you on the first floor. It has all the facilities of a commercial gym but not the crowds.



ribs's impression



The living and dining areas sprawl invitingly to make room for family dinners, impromptu meet ups with friends and for unforgettable moments with loved ones after a long day at work. To invite in natural light and fresh air, all you have to do is to open the large glass windows which fringe the living areas.



Your own oasis
in the great outdoors



A sleek balcony hugs the living and dining areas, creating a perfect spot for honing your gardening prowess or for curling up with a book. It also makes a perfect venue for quiet contemplation as the world below you rushes by.



Experience the joy of cooking
in your dream kitchen.



Elevate your cooking game with our comprehensive modular kitchen package, complete with premium hob and chimney



Image is for representation purpose only

Bathroom design that speaks to your style



A tranquil oasis awaits you in the beautifully designed bathroom of this home. From the luxurious fixtures to the calming color scheme, every detail has been thoughtfully selected to create a serene and inviting atmosphere.



Artist's Impression

Image is for representation purpose only

King-sized bedrooms - even for little princes and princesses



Whether you choose a home with three bedrooms or four, you are assured that every bedroom is big enough to qualify as a master bedroom. Even after you fit in a bed, wardrobe and other essentials, there's still enough room for cosy conversations and your imagination.



Artist's Impression

Your private box
for nature's opera



The master bedroom is roomy enough for a couple of recliners for cosy conversations al fresco.

Project Specifications

APARTMENT SPECIFICATION INTERNAL

- Split air conditioning units in living room & bedrooms
- Imported marble flooring for living room & bedrooms
- False ceiling for the entire apartment
- Light fixtures & fans in living room & bedroom
- POP finish walls in the entire apartment
- Internal wall finish with emulsion paint
- Light & Fan Automation in Living Room

PROJECT LEVEL COMMON FEATURES

- Exterior paint - Asian, Berger or equivalent
- Elevators details - Mitsubishi or equivalent
- DG Power backup for common areas
- Structure: RCC- Earthquake resistant

KITCHEN

- Granite/quartz / vitrified platform top with stainless steel sink
- Modular Kitchen with Hob & Chimney
- Water purifier of reputed brand

BATHROOMS

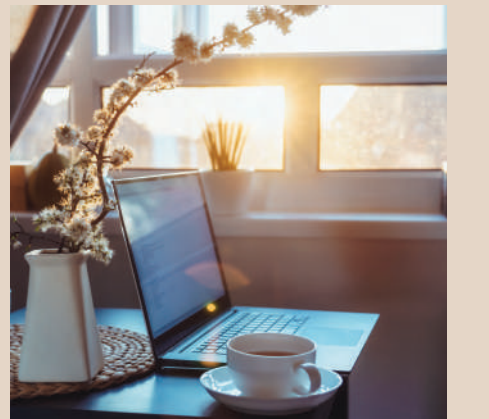
- Bathroom featuring designer tiles from flooring to ceiling
- Concealed plumbing with UPVC pipe
- Branded C.P. fittings
- Boilers of reputed brand
- Wall mounted W. C. with flush tank/flush valve
- Mirror in all the bathrooms
- Glass partition between dry and wet area
- Exhaust fans in all bathrooms

DOOR & WINDOWS

- Designer doors with handles
- Powder coated aluminum sliding windows
- Sound resistant windows

ELECTRICAL

- Heavy range concealed copper wiring
- Electrical points along with switches
- Power supply with ELCB
- Miniature circuit breaker system



Images are for representation purpose only

Creating benchmarks in uber-luxury

We consider ourselves fortunate to have always had customers who are used to the finest things in life. It has made going the extra mile a matter of habit for us. It has also reaffirmed our faith in building luxury and exceptional quality into every inch of our homes.

Our recent super-premium projects like Art Veda, The One, Supreme Elysia and Supreme Evana have become symbols of fine living in Bandra and indeed the western suburbs. We're set to do the same with Supreme Alora.

Supreme, an icon of quality & reliability.

- 70+ completed projects in Mumbai and Pune.
- Myriad of happy families
- Unmatched quality and attention-to-detail.
- An excellent track record of on-time delivery.
- Genuine trust and transparency in dealings.

Excellence in delivery

Our expertly trained engineering team ensures on-time delivery of projects with no compromise on quality. And on more than one occasion we've been known to deliver projects before time.

Project Name	Location	Completion Time (in years)
Supreme Epitome	Mumbai	2 years 5 months
Corner View	Mumbai	2 years 6 months
Supreme 19	Mumbai	2 years 5 months
Supreme Stellar	Mumbai	2 years 6 months
Supreme Badrinath	Mumbai	2 years 10 months
Supreme Signet	Mumbai	1 years 11 months
Supreme Pallacio	Pune	2 years 8 months
Supreme Estado	Pune	2 years 5 months
Adimaa	Pune	2 years

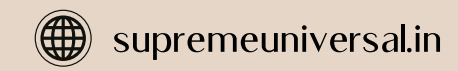




Site address : Junction of 19th Road, Khar Pali Rd, Khar West, Mumbai - 400052

Mumbai Office : 3rd floor, Everest Classic, Linking Rd, Khar (W), Mumbai - 400052

Pune Office: "B" Wing 1404/05, Amar Business Zone, Baner Road, Pune - 411045



The project has been registered via MahaRERA registration number: P51800049923 and is available on the website <https://maharera.mahaonline.gov.in> under registered projects.

Disclaimer: This advertisement is purely conceptual. The pictures, images are for representative purposes only. The elevation & visual are proposed & indicative and are subject to change.
The areas, prices, elevation, amenities, facilities, specifications, fixtures, fittings, item & goods in the Sale Agreement signed between the purchaser & Supreme Universal shall be final & binding. This advertisement does not constitute any form of the offer; the purchaser is governed by T&C of the Sale agreement. Booking is subject to confirmation and acceptance of T&C's.