



OC
Received

allure by Aadi

about the project

Charm, Temptation, Desire - all emotions of the heart that conjure a feeling of attraction towards something so powerfully enticing that you cannot resist it. In a word, Allure.

Nestled amidst vast open spaces all around with spellbinding views of green mangroves and Kanjur Bay, ALLURE is directly connected to the Eastern Express Highway.

Cocooned within luxurious amenities your eyes will be treated to strikingly beautiful vistas through our signature full height glass windows

ALLURE encloses meticulously crafted 1 BHK and 2 BHK apartments that blend functionality with vogue and lend a new meaning to contemporary living.



Kanjurmag Bay



Existing Playground



Public Garden

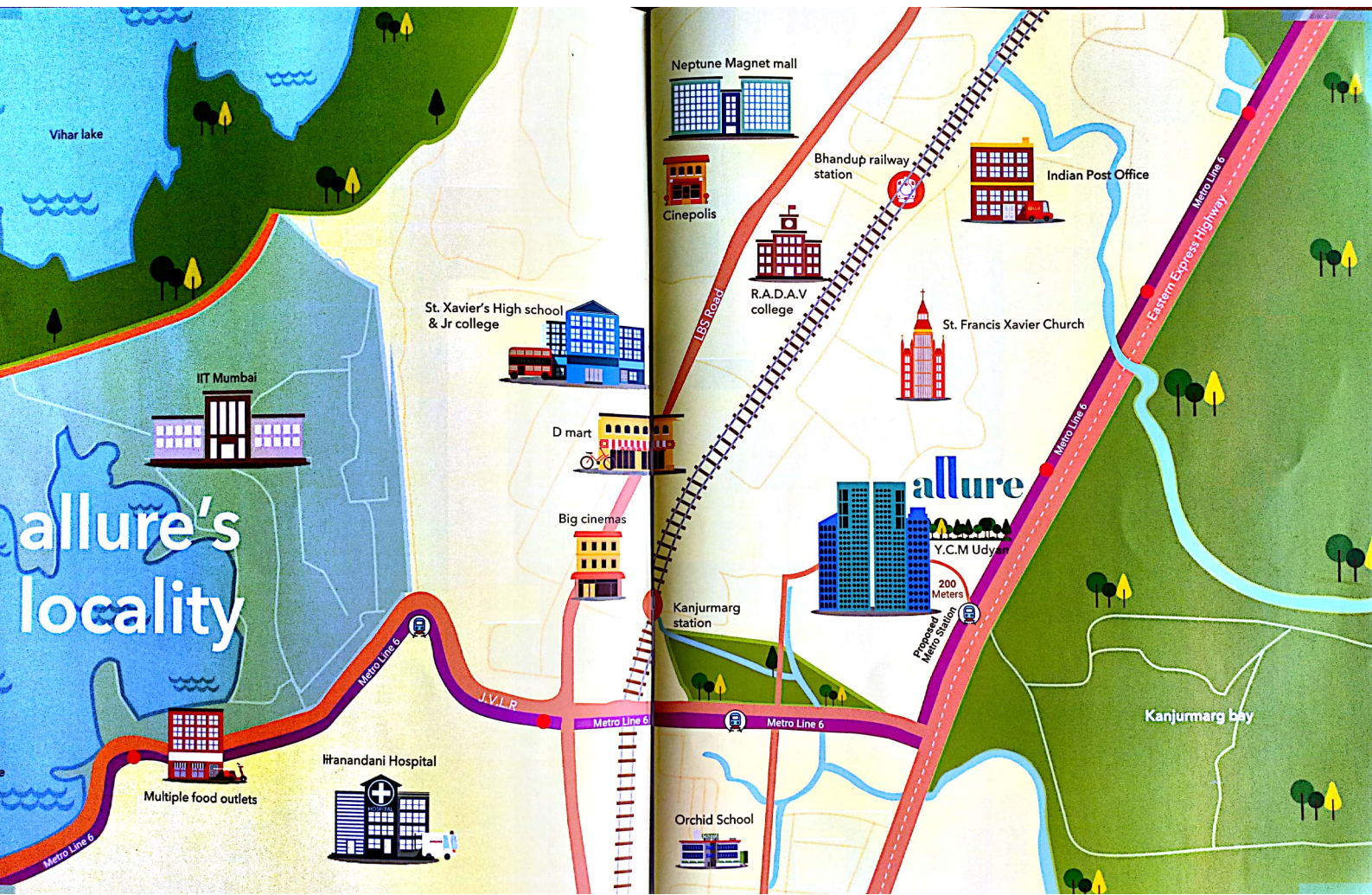
A 5 acre public park or lush mangroves spread over vast open salt pan land. Alluring views from every window guaranteed.

 Eastern Express Highway

 Proposed Metro 6 Station

 J.V.L.R Junction









[Shot on Location]



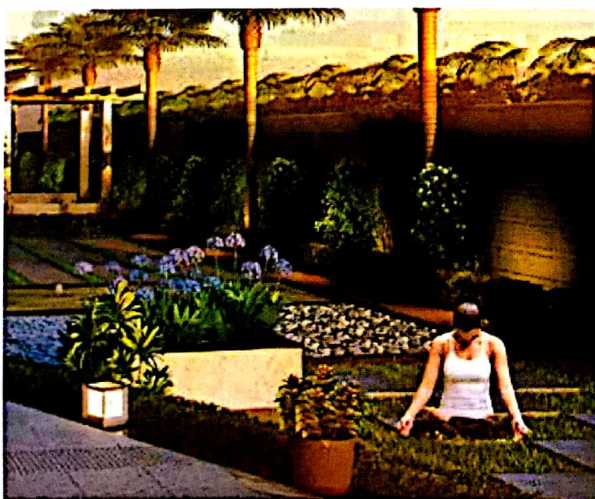
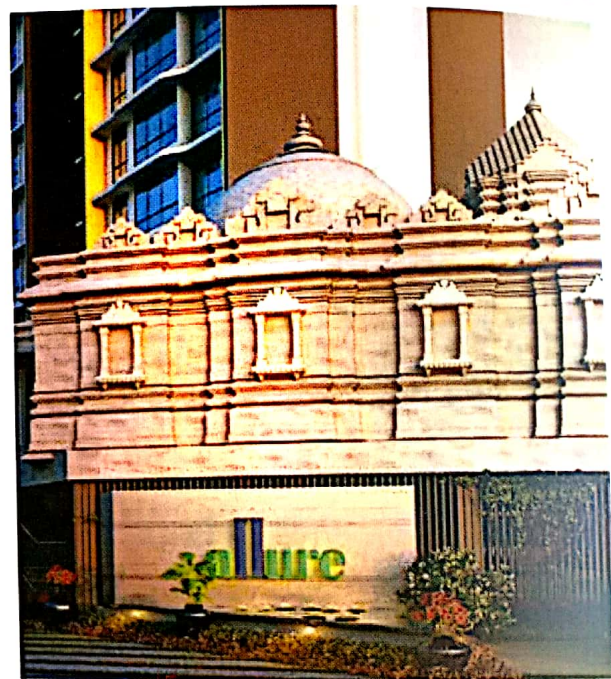
[Shot on Location]

outdoor amenities

Unwind in the **Amphitheatre** with your friends, or sweat it out in the air-conditioned **Gym**. Take a book and relax in the **Zen Garden** or chase your kids in the **Park**. Stroll along the **Jogging Track** or rejuvenate your senses in the **Steam Room**. Kindle your soul in the **Jain Temple** or invigorate yourself in the open to sky **Yoga Corner**.

You can do it all, and more, at **ALLURE**.

Jain Temple



Relax or meditate in one of the many thoughtfully landscaped serene spaces



Toddlers interactive play area with outdoor toys and sensory activity zone

Images are stock photos and for illustration only

Indoor Games room with Table tennis, Pool, Carrom and many others



Amphitheatre surrounded by accent lawn and fruit orchard, well equipped playzone for children of all ages, open air Fitness Zone and Multipurpose court for your recreation



Club House with Banquet & Fully Equipped Air-conditioned Gymnasium With Steam Room

indoor amenities

Intelligently designed and aesthetically pleasing interiors coupled with air-conditioned bedrooms make everyday living delightfully comfortable.

Loads of sunshine, gusts of natural air and breath taking views from each apartment are complimentary.

Full height glass windows



[Shot on Location]



Airconditioned Bedroom with **DAIKIN** split units

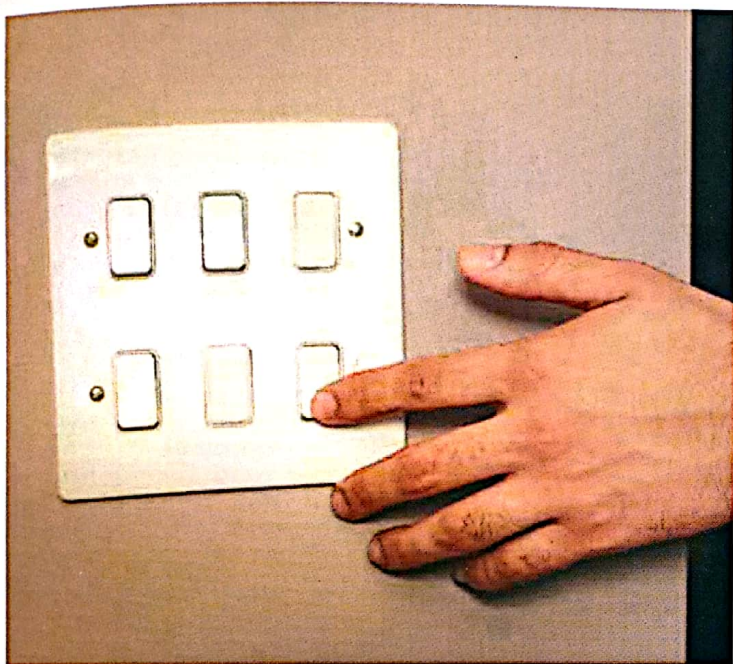
[Shot on Location]



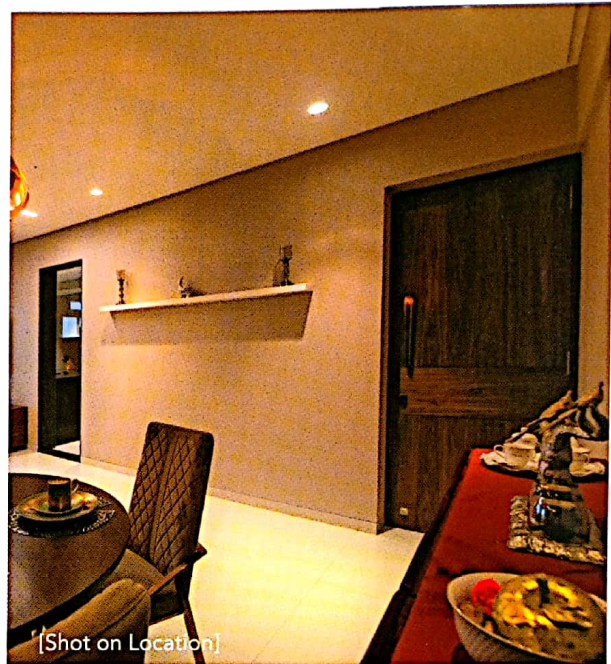
Fully finished bathrooms with **KOHLER** fitting and geyser

Images are stock photos and for illustration only

Hot pressed, Laminated doors
with solid wood frames



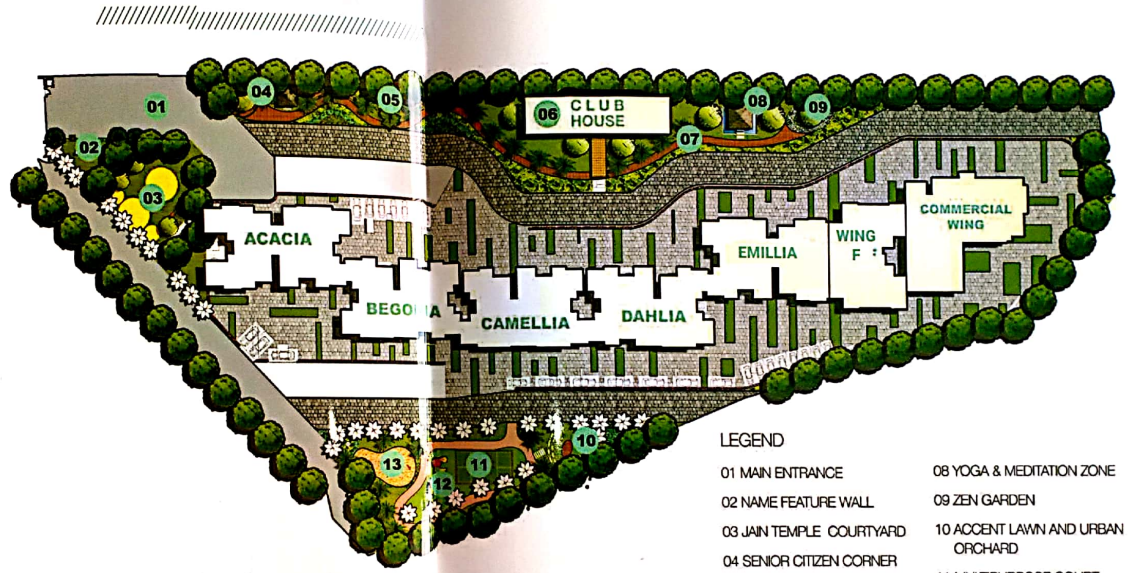
Modular switches and
concealed copper wiring



Kitchen with parallel
granite platforms and sink

Site

Layout



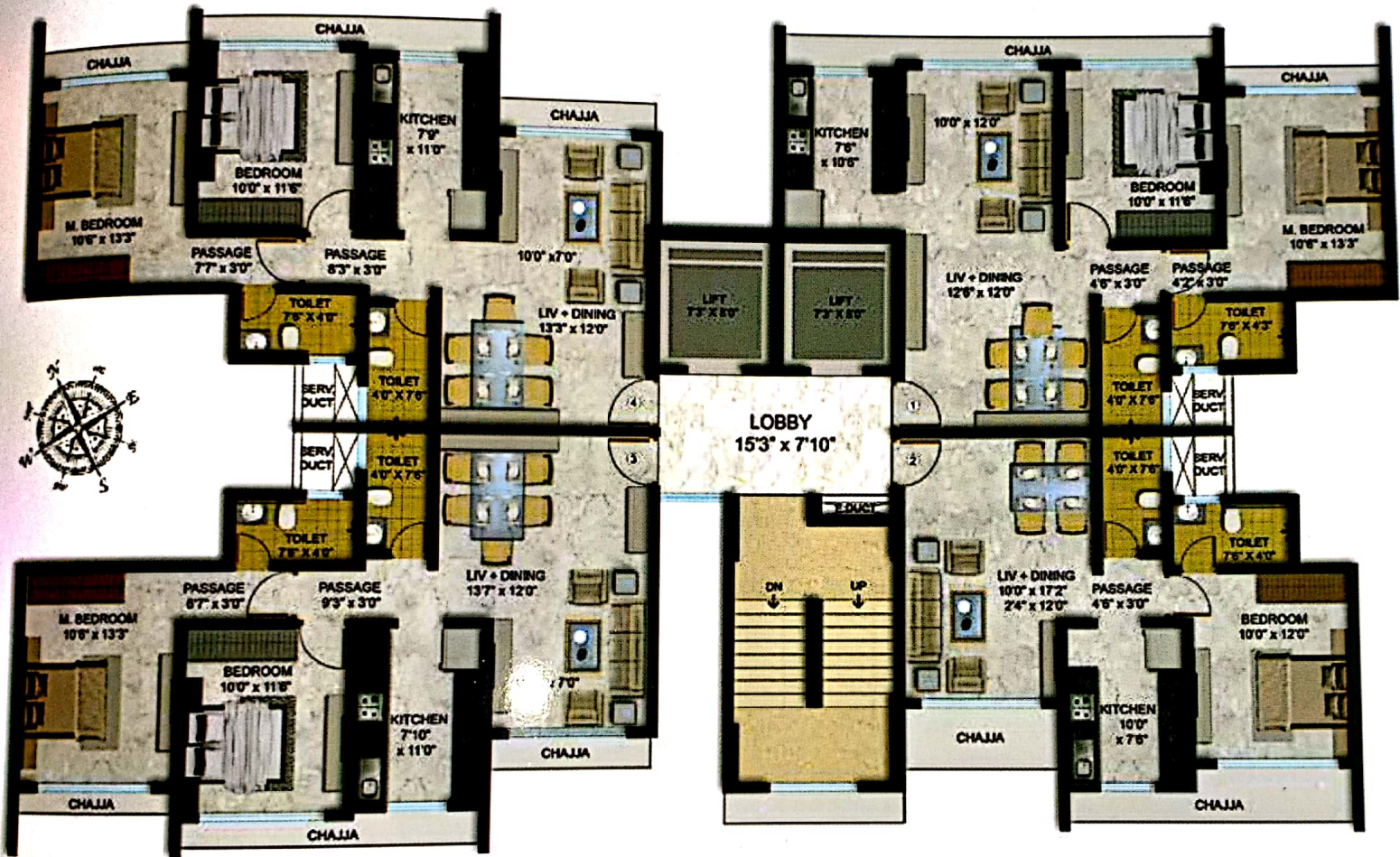
LEGEND

- | | |
|---------------------------------|----------------------------------|
| 01 MAIN ENTRANCE | 08 YOGA & MEDITATION ZONE |
| 02 NAME FEATURE WALL | 09 ZEN GARDEN |
| 03 JAIN TEMPLE COURTYARD | 10 ACCENT LAWN AND URBAN ORCHARD |
| 04 SENIOR CITIZEN CORNER | 11 MULTIPURPOSE COURT |
| 05 GARDEN AREA | 12 KIDS PLAYZONE |
| 06 CLUB HOUSE | 13 RELAXING ZONE |
| 07 READING CORNER UNDER PERGOLA | |

Salt Pan & Internal Garden View

ACACIA

Garden & Internal Club House View



Salt Pan & Internal Garden View

CAMELLIA



Garden & Internal Club House View

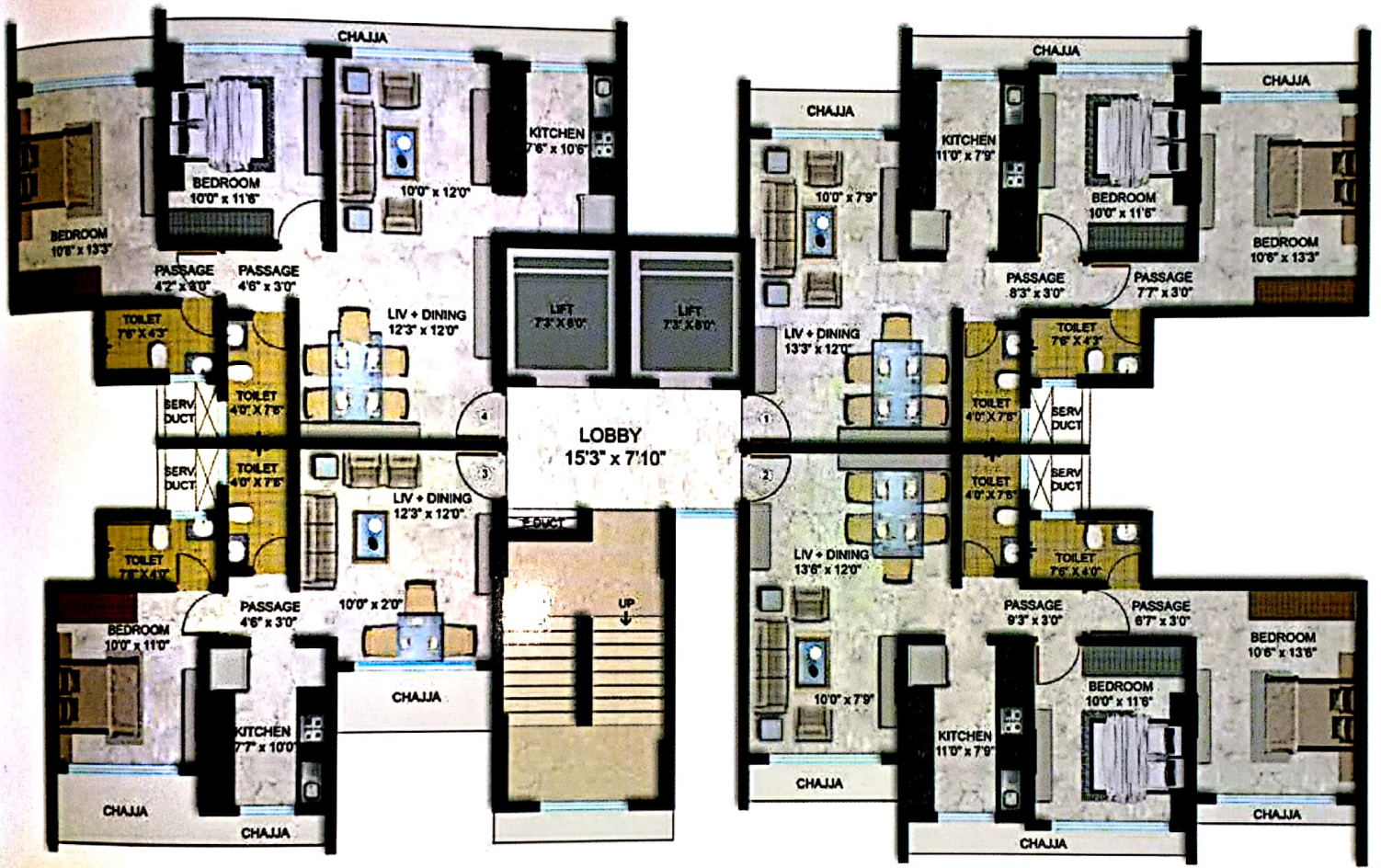


Salt Pan & Internal Garden View

EMILLIA



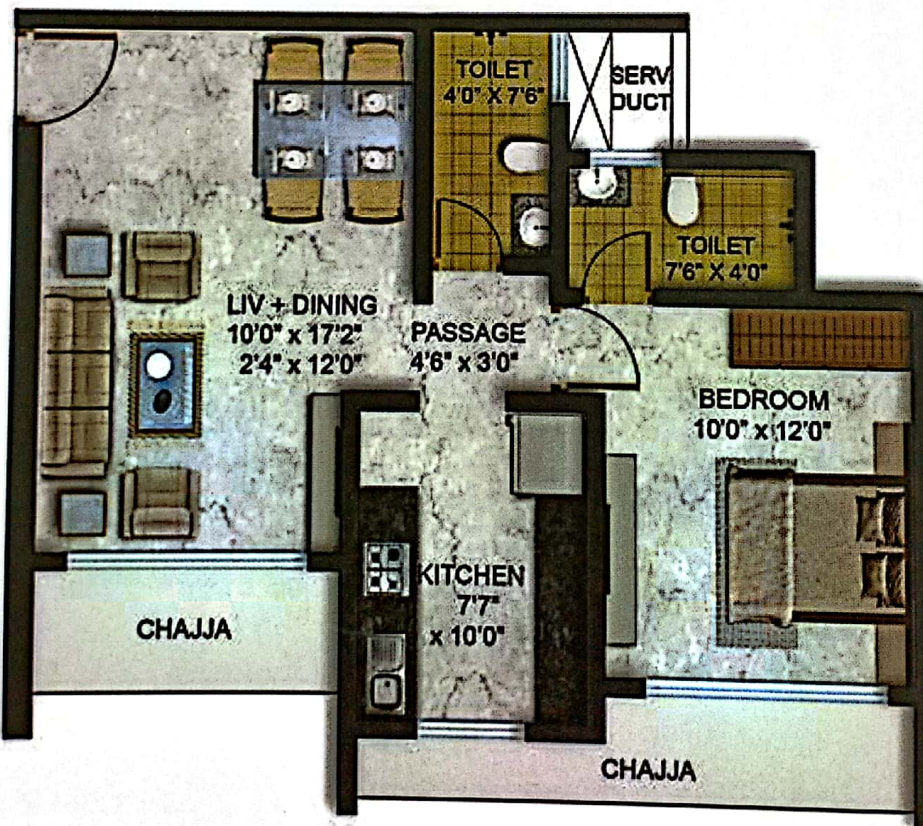
Garden & Internal Club House View



Salt Pan & Internal Garden View



1 BHK Grandé

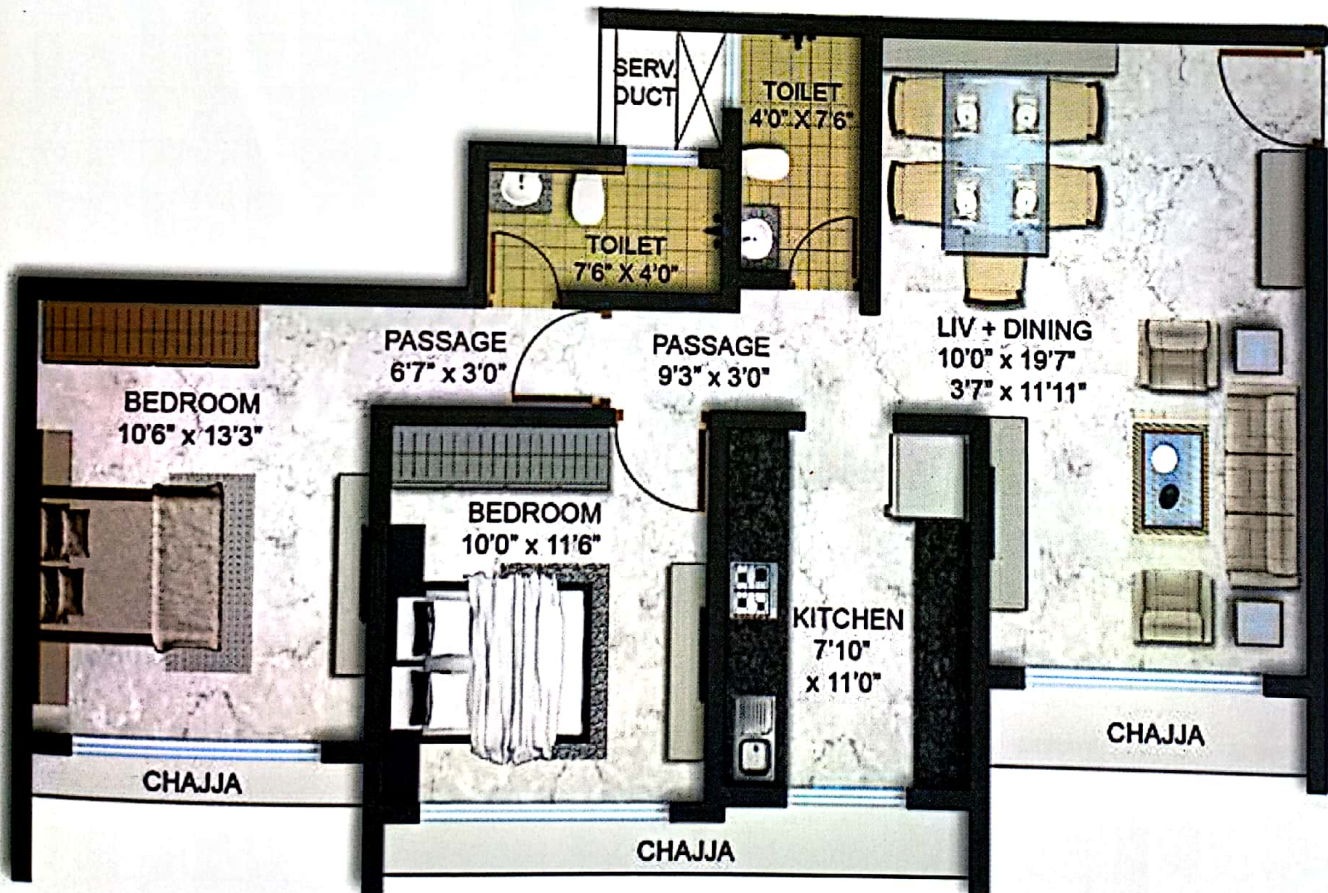


1 BHK Grandé

Carpet Area = 503.32/503.43/506.98 sq. ft.



2 BHK Grandé



2 BHK Grandé

Carpet Area = 720.65/730.01/732.6/732.92 sq. ft.