

**BAJAJ
EMERALD**



ANDHERI (E)
A PROJECT BY BAJAJ REALTY

ENJOY A PRIVILEGED LIFESTYLE OF PARAMOUNT
CONVENIENCES & MODERN COMFORTS

bajaj GROUP

Founded by the legendary Shri Jamnalal Bajaj, the Bajaj Group is pivotal in enriching the lives of millions. Today Bajaj Hindusthan Ltd. has emerged as the number one sugar company in India and among the top four globally. The Bajaj Group also comprises of a setup of a number of Power Generation and Infrastructure companies, that have added sparks of life energy into subsistence, also Bajaj Corp Ltd is the 2nd largest player in the overall hair oils and beauty products with the key brand - Bajaj Almond Drops Hair Oil and Bajaj Nomarks Skin Care Range. We take great pride in our long established reputation for building high quality residential, retail and commercial complexes across India. Providing fine engineering, affordable luxury and upscale lifestyle, we are committed to deliver quality with high standard of living wrapped around unobtrusive state-of-the-art features. We have been instrumental in encompassing infinite homes with sweetness and brightness, thus making the world a better place to reside. More information on our group companies can be accessed at www.bajajgroup.org

Founded by the freedom fighter, philanthropist and close confidante of Mahatma Gandhi, Jamnalal Bajaj. The Bajaj Group is one of the most respected and renowned business houses of India. Today, Bajaj Hindusthan Ltd. is Asia's number one sugar company and among the top four globally. In addition, the Group includes Bajaj Corp Ltd., a recently setup, Bajaj Energy Private Ltd., Lalitpur Power Generation Company Ltd., Bajaj Power Generation Pvt. Ltd. and Bajaj Infrastructure Development Co. Ltd. The Bajaj Group has a leading presence with diversified interest in the sugar and growing infrastructure sector including Power, Coal Mining and Real Estate; FMCG and Ethanol. Bajaj Hindusthan Limited, the Group's flagship company, was set up in November 1931. For more information log on to www.bajajgroup.org.

bajaj REALTY

Bajaj Real-Estate is an artisan focused on building high-quality residential, commercial and retail complexes across India. Our projects take pride in its fine engineering and provide affordable luxury and upscale lifestyle. As diverse as our country is, we have several projects targeted at different strata to service the entire nation. We are committed to build project from scratch and at the same time re-develop properties. Since its inception in 2008, the company has created strong partnerships in the industry and has land bank across India. We work with reputed engineering firms and have appointed architects having several years of domestic and international experience. We make use of the latest technologies and follow world-class processes to develop iconic structures. Every piece of our work demonstrates excellence in architecture and holds to the quality bar. Profit is not the only reason for our existence; while making any business decision we ensure that we project the basic rights of society and environment. Adhering to timelines and commitment towards customers and society is way of conducting business at Bajaj Real-Estate. Backed by the Bajaj Resources Limited, till date Bajaj Real-Estate has remained a debt free company. For more information visit www.bajajrealty.co.in.

ON GOING PROJECT



Artist's impressuion

Bajaj Shubhada, Vile Parle (E)

COMPLETED PROJECTS



Artist's impressuion

Bajaj Enchante, Andheri (W)



Artist's impressuion

Bajaj Prakriti Angan, Kalyan (W)

ELEVATION



Artist's impression

OVERVIEW



Image for Representation

Bajaj Emerald is your picture-perfect home of exclusive advantages.

Located at a stone-throw distance from Andheri Railway Station & Metro Station, 'Bajaj Emerald' is an aesthetically designed project consisting of 4-towers with exquisite 2 & 3 BHK Apartments equipped with every modern facility.

We have taken the greatest care to ensure that your life at 'Bajaj Emerald' flourishes with superior amenities and urban comfort. The project is in close proximity of WEH (Western Express Highway), Domestic and International Airports, M.I.D.C & Andheri Kurla Road; therefore, life here is all about accessibility, comforts and pure happiness.

LOCATION HIGHLIGHTS



MASTER PLAN



LEGEND

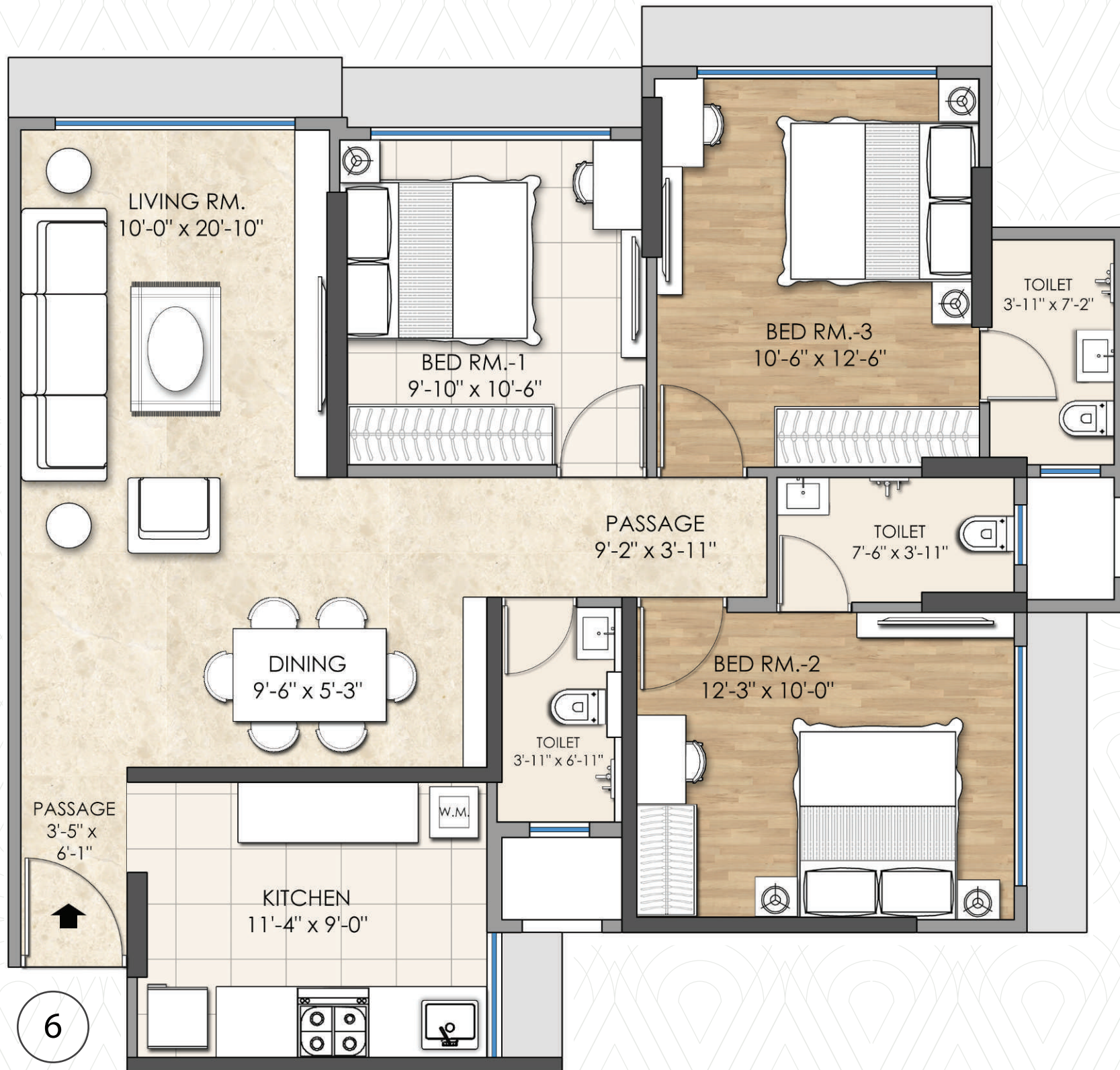
01. MAIN ENTRY
02. DRIVEWAY
03. PAVED AREA
04. GREEN WALL
05. FLOWER BED
06. GRAVEL BED
07. WAY TO BANQUET HALL
08. PAVED PATHWAY
09. SEMI PAVED AREA AS SPILL OVER AREA
10. PERGOLA
11. HEDGE FOR SCREENING
12. SITOUT OPEN TO SKY
13. CHILDREN'S PLAY AREA WITH EQUIP. OVER RUBBER FLOORING
14. PAVED AREA WITH SITOUT AND BUILT IN PLANTER & GRILL
15. TREE BOX WITH ORNAMENTAL TREES
16. PORTABLE BENCHES AS SITOUT
17. FORMAL SITOUT WITH PERGOLA AND PALM CREEPERS
18. SITOUT AREA
19. SEMI PAVED BAND
20. PLANTERS / SHRUBS ALONG THE WALL
21. GREEN AREA AND PLANTERS



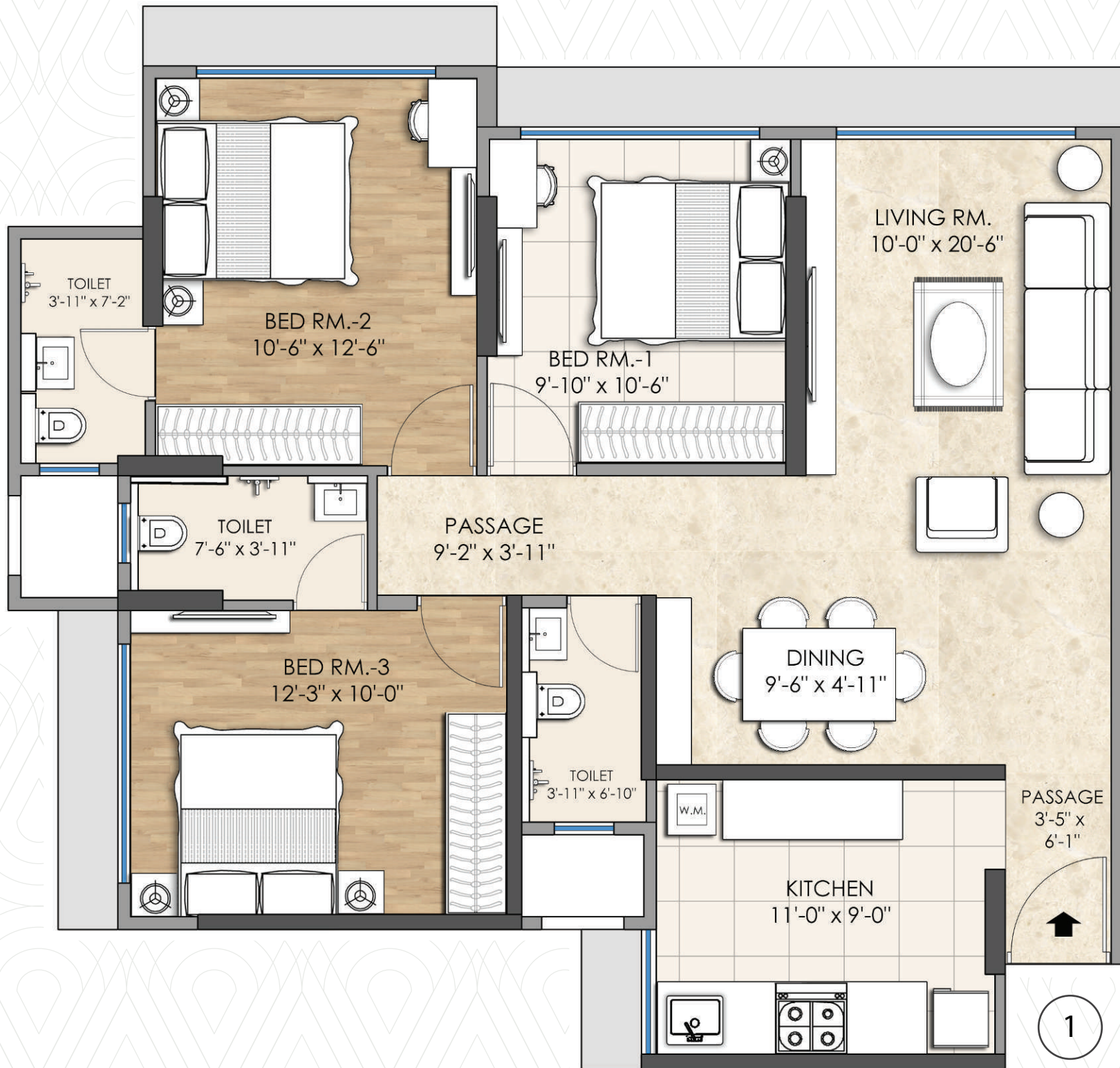
TOWER C - 2 BHK UNIT PLAN



TOWER C - 3 BHK UNIT PLAN



TOWER D - 3 BHK UNIT PLAN



AERIAL VIEW



Artist's impression

EXPERIENCE AN EXTRAVAGANT LIFESTYLE AT EVERY CORNER



AMENITIES

Image for representation

AMENITIES IN THE BUILDING

- Well-designed entrance lobby
- Three elevators each in Wing A, B and C
- Two elevators in Wing D
- Two well ventilated staircases in Wing A, B and C having a width of 1.5 meters each
- One well ventilated staircase in Wing D having a width of 1.5 meter
- Well designed lift lobbies on each floor
- Refuge area

AMENITIES IN THE COMPLEX

- Exclusive Four towers, namely Wing A, B, C and D
- Two levels of basement parking
- Landscaped gardens at ground level
- Children's play area
- CCTV cameras at strategic locations
- Alternate source of power supply for certain common areas and essential services
- Rainwater harvesting
- Borewells
- Sewage treatment plant
- Organic waste convertor



Image for representation



SPECIFICATIONS

GENERAL

- Italian marble flooring in living, dining and passage areas
- Wooden laminate flooring in the bedrooms (2 BHK)
- Vitrified tiles flooring in one bedroom and wooden laminate flooring in two bedrooms (3 BHK)
- Powder coated aluminium sliding windows starting at height of one feet from floor level in living room and bedrooms
- Legrand make electrical switches
- Provision for data cable and DTH
- Provision for split AC in living and bedrooms
- Video door phone
- Main door frame in teakwood with provision in design for safety door
- Main door in veneer finish
- Bedroom doors in veneer finish
- Toilet doors in laminate finish
- Toilet door frames in granite

Image for representation

TOILETS

- Ceramic / vitrified tiles flooring
- Ceramic / vitrified tiles dado upto door height
- Exhaust fan
- Openable window for service duct
- Provision for geyser
- Kohler / Grohe or equivalent CP fittings
- Kohler / American Standard or equivalent sanitary ware

KITCHEN

- Granite platform with SS sink
- Service counter in granite
- Four feet height vitrified / ceramic tiles dado above main counter and service counter
- Exhaust fan
- Provision for water purifier
- Provision for chimney

bajaj GROUP

bajaj REALTY

Contractor : Shapoorji Pallonji And Company Private Limited

Site Address : Bajaj Emerald, Opp-Andheri Railway Station, S.N. Road, Behind Better Homes,
Andheri East, Mumbai- 400069

 022-28225145 | Email: sales@bajajrealty.co.in | Website: www.bajajrealty.co.in



MahaRERA Registration No: P51800012464 | <https://maharera.mahaonline.gov.in>

Disclaimer: This brochure/printed material does not constitute an offer or contract of any nature whatsoever between the Promoters/Developers and the recipient. All the transaction in this development shall be subject to and governed by the terms and conditions of the Agreement for Sale to be entered between the parties. Information in this brochure with respect to the project is indicative only. Artist's impressions, products, features, furniture, floor coverings, curtains, mirrors, wall hangings, light fittings, furnishings, pictures, images, plans, drawings, amenities, dimensions, elevations etc., if any, are shown as illustrations and for reference only. Any reliance placed on such information is strictly at viewer's risk. No photos have been shot at site. An independent investigation and analysis of the developer and the project may be undertaken by you before investing / purchasing. The Real Estate Agent acts only as a distributor for facilitating the sale of units in the project and not in any other capacity and is not making any representations or warranties, express or implied in respect of the Project. T&C Apply.