

ETERNIS

YOUR GARDEN PARADISE

☰ LODHA





LODHA
ETERNIS

Your garden paradise



Your Garden Paradise

You're reclining under a white canopy, protected from the bustle of the city. The sound of birds chirping enhances the occasional rustle of leaves and the quiet murmur of water. Mind and body at peace, you open your eyes.

As your senses are enveloped by nature in all her abundance, you savour the joy of knowing that this vast expanse of beauty and greenery is yours to have whenever you choose. Because you are not in a nature reserve or forest sanctuary. You are in Lodha Eternis, your heavenly retreat, your garden paradise, your home.

With over 80,000 square feet of picturesque landscaping, Lodha Eternis is a planned luxury development on a scale never seen before, a rare expanse of greenery in the bustling suburb of Andheri East. With spacious luxury residences ensconced in this unique garden environment, Lodha Eternis is designed to be much more than a place to live. It is a haven, a soothing, renewing experience, a source of infinite well-being and natural beauty.

Exuding peace, tranquillity and impeccable style, replete with world-class amenities and fabulous luxuries, Lodha Eternis disconnects you from the world whizzing by and lets you live life at your own pace.

Lodha Eternis.
Because some things
are eternal.





Quiet pools.
Lush greenery.
Private pavilions.
The perfect setting for paradise.

When Sitetectonix of Singapore, the world's leading landscape designers, set out to create a unique environment, the result can be nothing less than spectacular.

Having won awards and acclaim globally, Sitetectonix brings to Lodha Eternis the same brilliant design and unmatched execution that graces its other landmark projects - Far East Square, Kanuhura Beach Resort in the Maldives, and Hotel Sofitel Central in Hua Hin.

From your vantage point outside the clubhouse, you see the Lodha Eternis landscape unfold before you like a stunning work of art. Smooth stone walls, lush greenery and tranquil water bodies create a vista in which architecture blends seamlessly with outdoor landscape design.

Across this tapestry run two parallel themes: the greenery theme and the water theme. On one hand, smooth lawns slope gently into cosy groves of trees and cool, leafy avenues, forming a refreshing green sequence. On the other hand, quiet pools, cascading water walls and a long, rippling water channel form the water theme, a perfect complement to the lush greenery sequence. Both sequences culminate at the imposing timber deck entrance of the stately, elegant clubhouse.

Adding their own delightful touch to the landscape are charming sitouts, cosy pavilions, cabanas and meandering pathways, providing opportunities to relax, reflect and savour the rarest of luxuries: true peace and serenity, in an environment like no other.





Swim.
Work out.
Meditate.
Or simply
absorb
the greenery.

Paradise is
at your
disposal.

Getting away from it all couldn't be any easier: at Lodha Eternis you now have every possible way to relax, restore and revive your mind and body, all at your doorstep.

With landscape extending over 80,000 sq.ft., Lodha Eternis brings together every facility for a contemporary lifestyle, and lets you enjoy all of it in uncrowded, perfect peace.

Stress floats away as you indulge in a therapeutic massage at the spa. A world-class gym and a swimming pool are at your disposal. Feeling sociable? Join the neighbours in a friendly game of pool, carrom or table tennis. Or if you prefer to unwind in solitude, let the kids frolic in their own pool while you catch up on your reading, in one of the delightful pavilions. There's even a beautiful temple for spiritual solace.

And if you have to carry work home, a well-equipped business centre helps you dispense with it as easily as possible.

Lifestyle privileges

80,000 sq.ft. of landscape design by world renowned Sitetectonix, Singapore

Vehicle free podium to maximize green area

Environmentally sensitive development:

- Waste water recycling
- Rain water harvesting

Half - Olympic size (80 feet+) swimming pool with separate kids' pool

Grand club with:

- World class gym
- Indoor games arena, with table tennis, pool, carrom & other indoor games
- Lounge & cafe with library and business centre facilities
- Party hall
- Spa facility with massage room and separate male & female steam and jacuzzi

Children's play area

Meditation pavilion & waterfront cabanas

Elders' corner

Ganesha temple

Multipurpose sports court with basketball & other games





Advanced protection for your family.

Peace of mind for you.

Perhaps one of the biggest luxuries Lodha Eternis offers, is absolute security: a six-tier security system works round the clock, to keep you and your family safe.

Access is controlled right from the entrance gates, equipped with a boom barrier and a long range reader to scan vehicles. In the entrance lobby to each building, an access card entry acts as a further check. The lobby is also monitored through closed-circuit television, from a central monitoring room.

Besides, your residence boasts of its own advanced security features like a video-door phone. While the kitchen has a gas detector installed, ensuring that any crisis can be detected and controlled, immediately.

Advanced security features

International standard six-tier security with:

- Video door phone in each residence
- Gas detector in kitchen
- Electronically controlled access to building
- RFID control vehicle access
- CCTV monitoring of key areas
- Central monitoring room for emergency response

In the heart of the city. But in a world of your own.

Andheri East bustles with the energy of an urban microcosm: modern office complexes, sprawling residential developments, busy industrial units and trendy entertainment plazas signal the rapid growth of one of Mumbai's hottest residential and commercial districts.

At its heart, nestles Lodha Eternis. An oasis of lush green, connecting you to everything you need in the city, while protecting you from its din. Relax as your chauffeur whisks you from the luxury of your residence to your meeting - MIDC, SEEPZ, industrial and technology parks and the corporate offices of a number of multinational and Indian companies are just a drive away. Fine schools and hospitals are right in the neighbourhood. While a relaxed Sunday brunch or a glitzy evening out can happen a lot more often, with Mumbai's finest luxury hotels just around the corner.

Connectivity to any place else is just as easy. Two of Mumbai's key bus depots, railway stations and the Metro line are located in Andheri East, with the domestic and international airports virtually down the road. While the link roads and express highways get you to Central and South Mumbai, swiftly and smoothly.

In the vicinity

Office complexes like TCS, MIDC Park, Solitaire Business Square Park and SEEPZ; corporate offices of Unilever, FINO, Bisleri and Aditya Birla Group – a 5 minute drive away

Sevenhill Hospital, Shirodkar Hospital and Holy Spirit Hospital

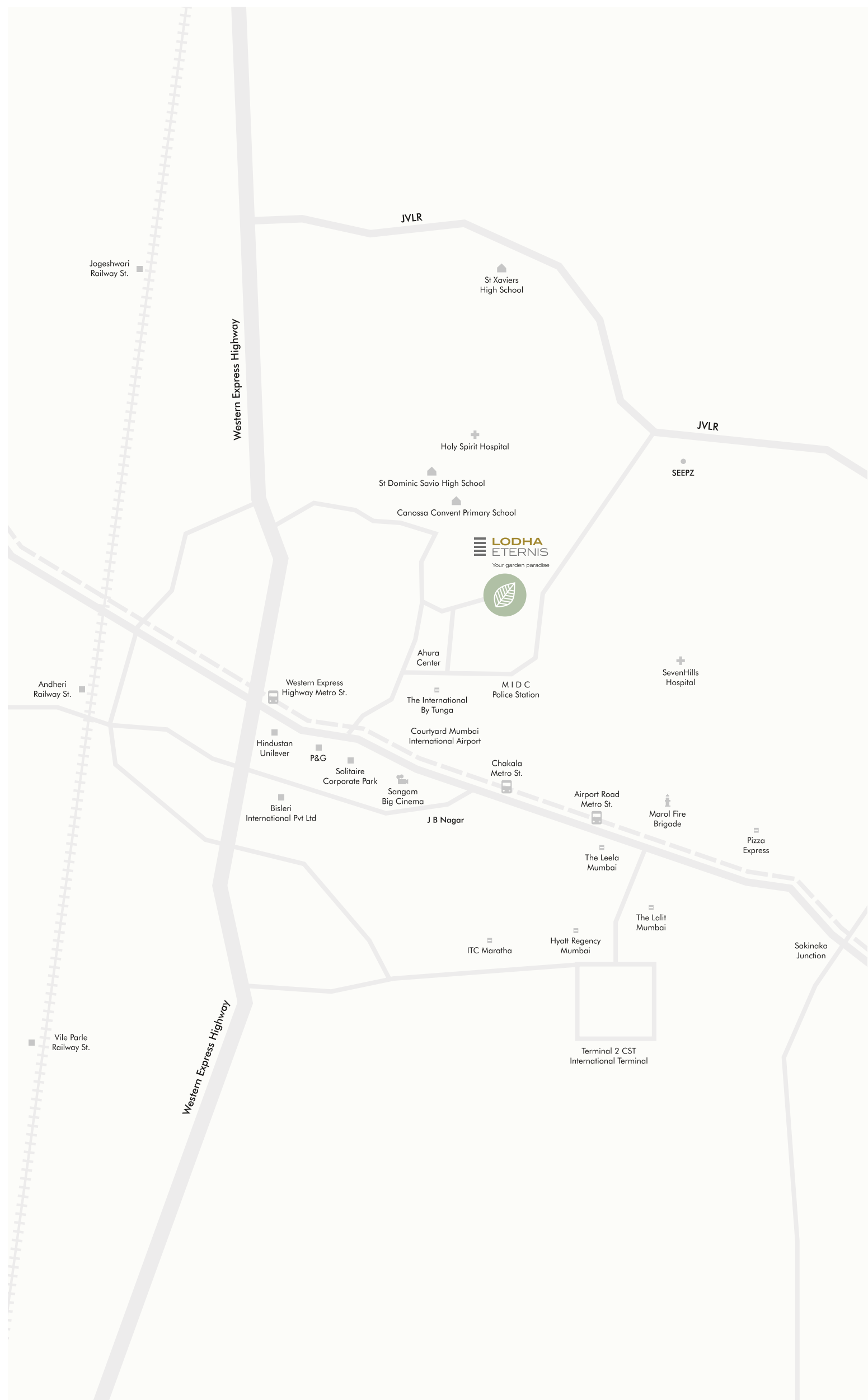
Bombay Scottish School, St. Dominic Savio School and Canossa High School - a 5-minute drive away. IIT Powai, and NITIE campuses – a 10-minute drive away

ITC Grand Maratha, Le Royal Meridian, The Grand Intercontinental, The Leela Kempinski, Grand Regency – a 5 minute drive away

10 minutes away from the domestic and international airports, Andheri and Jogeshwari railway stations, Marol and SEEPZ bus depots

The Metro railway station is just 1.5 kms away, connecting you directly to the western & central suburbs and also to South Mumbai

Major shopping malls & entertainment centres in the neighbourhood





12 majestic towers. All detailed to perfection.

A wealth of planning and detail has been invested in Lodha Eternis, to assure you a life of effortless ease and privilege. The grand entrance is ornamented with a garden and basement parking. Intelligent planning that ensures both total protection for your vehicles, and total traffic-free enjoyment of the landscape, for you and your family. The towers are set in three clusters - Serena, Idyllia and Natura - each with pleasant views of the greenery and beautiful water bodies dotting this private paradise. The buildings are designed along horizontal lines. Giving you the privilege of a super-spacious, super-luxurious residence, as well as the warmth of living in a small, close-knit community, rare in these days of soaring towers. There are 2 high-speed passenger elevators to whisk you up from the air-conditioned building lobby to your floor - you are surrounded by luxury even before you step into your residence.

Residential wing privileges

Direct access for cars from entrance to basement parking, ensuring a vehicle-free landscape

Grand air-conditioned entrance lobby

Designer floor lobbies

Private garden residences in each building

Provision for rainwater harvesting

Sewage treatment plant

Two high speed elevators for each building by Schindler* ThyssenKrupp*, including a stretcher elevator

Staff shower or toilet on each floor at mid-landing

Drivers waiting room

Professional facilities management

*Or equivalent.



Luxury at your fingertips. Serenity in your soul.

Sophisticated design, elegant aesthetics and sheer luxury come together to create the perfect residence at Lodha Eternis. Fully air-conditioned[^] and spacious beyond your expectations, your exclusive home surrounds you with privilege, comfort and indulgence.

Italian marble flooring graces your magnificent living room, dining room & passage, while the other bedrooms are enhanced with imported marbital flooring. En-suite walk-in

closets* add a truly luxurious touch to your daily routine. And with premium European/American bath fittings by Grohe*/Kohler*/Roca* and imported marble & designer tile finishes, the bathrooms could grace the pages of an interiors magazine.

Besides, the finest technology has been deployed to give you a home as efficient as it is elegant.

No detail is forgotten, with a separate puja area*, a separate utility area and even a separate self-contained room for your household staff**, with a separate entrance and wash room.

So while your tea brews in the imported modular kitchen, all you need to do is step through the full-height French windows onto your private open-air sundeck, and contemplate the sunset in peace.

A residence beyond compare

Fully air-conditioned homes[^]

Italian marble flooring in living room, dining & passage

Lavish decks (wood-finished tiles) with grand full-height French windows**

Lavish 4 fixture master bathroom**

Walk-in wardrobe in master bedroom**

Imported fitted kitchen

Vaastu compliant design

Imported marble & designer tile finish in bathrooms

Imported Marbital[®] flooring in all bedrooms

Premium vitrified tiles in kitchen and utility areas

Motion sensors for automated lighting in bathrooms

European / American bath fittings by Grohe*/Kohler*/Roca*

Separate utility & store room in residence

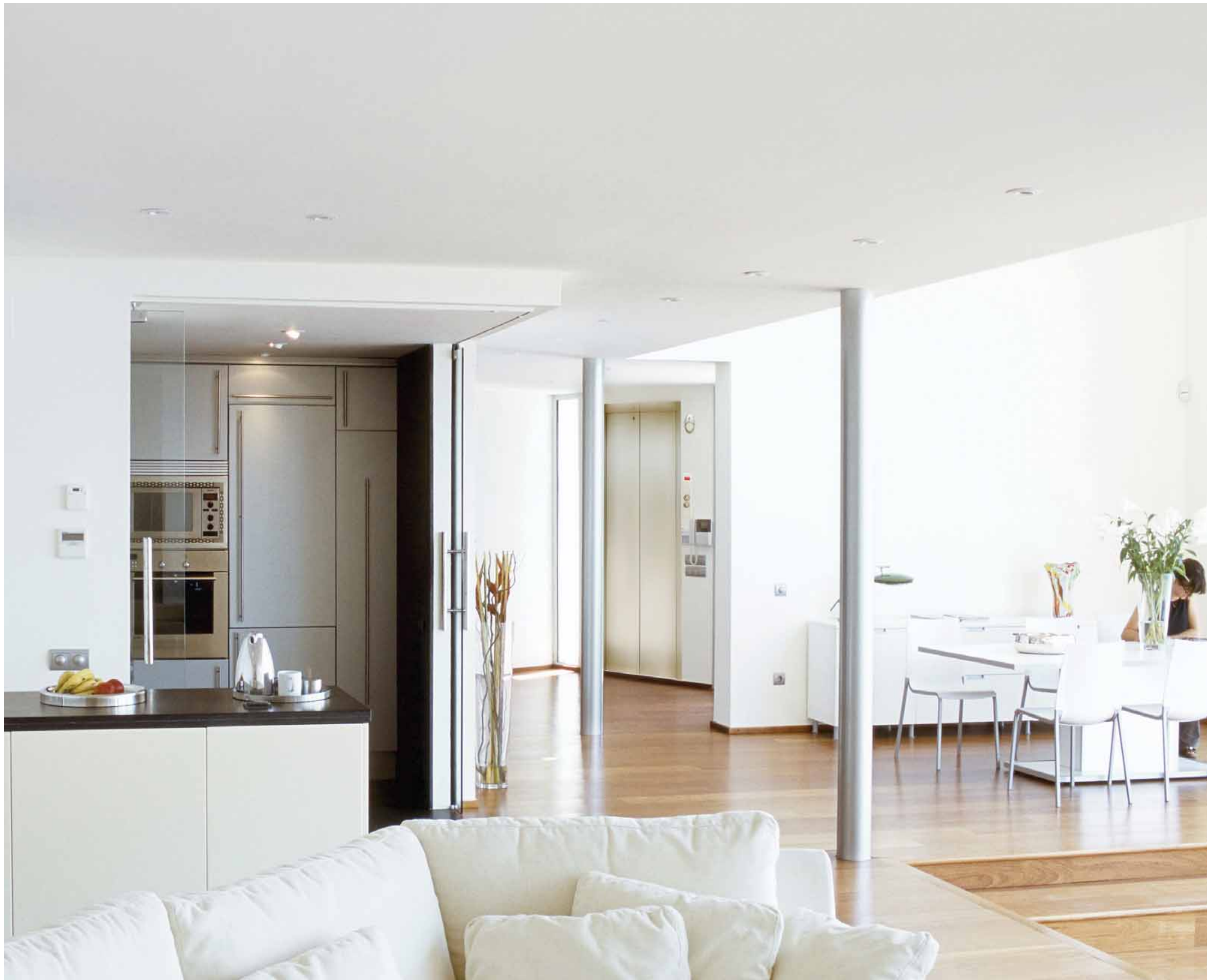
Separate Puja area in residence**

Separate domestic staff room with bathroom** (with separate entrance)

Select residences with private gardens

*Or equivalent. **in select residences.

[^] Except for kitchen, toilets & service areas.





Garden residences: Luxury villas that will grow on you.

For those who yearn for the exclusive charm and privacy of villa living, Lodha Eternis offers a select number of premium residences, each with its own private garden. There are a limited number of these residences in each building, adding up to just 39 luxury garden residences in the entire development. Enjoy alfresco dinners on your own lush green lawn, host stylish open-air parties for friends: your private garden provides the perfect setting. Besides, the garden residences are located on the vehicle-free, lush, green podium, giving you an unmatched view of the stunning landscape of Lodha Eternis.

Only 39 garden residences in the entire development

Your own private garden

The best view of the landscape from the podium level

Lodha Eternis has been conceived, designed and built with a single-minded mission: to make every day of your life a truly relaxing, refreshing and invigorating experience. With aesthetics, planning, amenities and luxuries beyond your expectations, leave the stress and din of city life behind. Come home to your garden paradise in Lodha Eternis.





Grand entrance



Clubhouse with swimming pool



Waterfront cabanas with timber deck



Open air jacuzzi and waterside café



Water channel



Swimming pool with children's splash pool



Elevation



- Idyllia
- Natura
- Serena



Legend

1 Shallow Pool With Glass Water Cube	18 Function Lawn
2 Meditation Deck	19 Pool Side Lounge
3 Wellness Corner	20 Water Court With Feature Tree
4 Raised Water Trough	21 25m Lap Pool (1.2m Deep)
5 Multi-purpose Lawn	22 Jacuzzi Lounge (0.9m Deep)
6 Water Cascades	23 Pool Side Court
7 Grand Steps	24 Cabana Deck
8 Timber Deck With Lined Feature Trees	25 Yoga Lawn
9 Water Rill With Bubblers (0.1m Deep)	26 Elderly Corner
10 Sports Lawn	27 Seating Corner
11 Chill-out Court	28 Fountain Deck
12 Family Deck	29 Private Garden*
13 Kids' Play Area	30 Multipurpose Hard Court
14 Party Lawn	31 Drop-off Lobby
15 Family Pavilion	32 Club House
16 Alfresco Deck	33 Ganesh Temple
17 Kids' Pool (0.5m Deep)	

* In select residences only

Natura C

2 Bed
3 Bed Petite

3 Bed Petite

3 Bed Petite



2 Bed

2 Bed

Natura B

3 Bed Premia
3 Bed Luxe Type A

3 Bed Premia

3 Bed Premia



3 Bed Luxe Type A

3 Bed Luxe Type A

Serena B

2 Bed



2 Bed

2 Bed

Idyllia B

2 Bed



2 Bed

2 Bed



World One



(Left to Right) - World Crest, Lodha Florenza, Trump Tower

The Lodha Group

Established in 1980, the privately held Lodha Group is India's largest real estate developer, and amongst the world's few multinational real estate brands with a presence in India and the United Kingdom.

The company is one of the most profitable real estate developers in India and has been the largest by sales for three consecutive years. Its sales have grown steadily from INR 3,911 cr. in FY 11-12 to INR 7,790 cr. in FY 14-15.

The group currently has total land holdings of over 6,000 acres with an estimated saleable area of approximately 490 million sq. ft. This includes, 27 ongoing and 21 planned projects, spread over 1,284 acres of land, comprising 100 million sq. ft. of saleable area. In addition, Lodha's land reserves of 4,750 acres – the largest in the Mumbai Metropolitan Region – have an estimated saleable area of 388 million sq. ft. Our ongoing and planned projects and land reserves combined were valued at USD 11.8 billion by Knight Frank in October 2014.

Lodha has delivered 26 million sq. ft. of real estate in projects that span across Mumbai, Pune and Hyderabad. In FY 14-15 alone the company delivered 5.7 million sq. ft. and 5,500 units across projects. The group plans to deliver more than 11.8 million sq. ft. in FY 15-16.

Lodha's vision of 'Building a Better Life' extends across markets with several landmark developments to its credit, including World One – the world's tallest residential tower, and Palava City – the first greenfield smart city in the country. The group has brought some of the top global names including Armani/Casa, Trump, Philippe Starck, Jade Jagger, Kelly Hoppen, Greg Norman and Pei Cobb Freed to India. In 2010, the Group recorded the biggest land deal in India till date, buying a plot for INR 4,053 cr. from the Mumbai Metropolitan Region Development Authority (MMRDA), where it is developing New Cuffe Parade, a world-class mixed-use development set to become the new city centre of Mumbai. The Group has acquired other notable land parcels in Mumbai such as the 88-acre land parcel in the Thane region; the 17-acre Mumbai Textile Mills parcel for DLF for approximately INR 2,727 cr., and the celebrated Washington House property on Altamount Road from the American government.

In November 2013, The Group extended its international footprint with the acquisition of the

landmark MacDonald House at 1 Grosvenor Square in Prime Central London from the Canadian Government for a consideration of over GBP 300 million (INR 3,100 cr.). It was selected as the preferred bidder in the face of competition from sovereign wealth funds and leading developers from across the globe. With this acquisition, the Group has set up business in the UK with a planned investment of GBP 3 billion (> INR 30,000 cr.) over the next 5 years and become a true Indian multinational company. The Group acquired another premium site in Prime Central London, New Court at 48 Carey Street, taking the combined investment to approximately GBP 400 million. The group is on target to deliver over 1,000 homes each year from 2017 and is planning a further £3 billion worth of investment in the UK by 2018. With offices in London, Dubai and Shanghai, and planned openings in the USA and Singapore, the Group is on the road to a substantial international presence.

Lodha Group is one of the largest corporate entities in Mumbai, with over 3,870 direct associates and over 25,000 workmen at its sites. It has the largest technical manpower in real estate (1,800+ engineers, 800+ management professionals, 150 designers and architects supporting a 1,800 strong construction management team. The Company also employs over 550 marketing and sales professionals, supported by 300 customer care representatives. Lodha is also the largest recruiter from premier B-schools, having employed over 300 fresh graduates.

Pioneering new trends in the market, the Group introduced Casa by Lodha in 2012, offering the mid-income consumer luxury homes within easy reach. The Group also introduced the concept of branded office spaces with offerings at every level, from world-class corporate offices and large-scale office campuses to signature boutique offices.

Lodha's clean title land, world-class design, exemplary execution capabilities, differentiated branding and marketing, together with energetic on-ground sales have worked well to create the best value for customers. The Group's tremendous success has been marked by financial investments from the finest global long-only investors, including JP Morgan, Deutsche Bank, HDFC Ventures and ICICI Ventures. Going beyond its role as a premier real estate developer, the Lodha Group has been a socially responsible corporate, focussing on education – the best medium to enrich society.

AWARDS AND RECOGNITION

At Lodha, our endless endeavour of leadership through innovation has repeatedly set new benchmarks, won prestigious awards and garnered the confidence of customers and investors.

- Winner of the Global Leadership in Real Estate Award at the NDTV Profit Property Awards 2014.
- Winner of the National Safety Council Award 2014 in the construction category for Lodha Fiorenza.
- Named 'The Most Trusted Real Estate Brand in the Country', Brand Trust Report 2014.
- Ranked one of India's 'Best Companies to Work For 2014' by Great Places to Work® – for the fourth consecutive year.
- Winner of 'India's Most Admired Builders' award at the 9th Construction World Architect & Builder (CWAB) Awards 2014.
- Winner of 'Deal of the Year' at the RESI Awards 2014 in London for acquisition of the Canadian High Commission.
- Winner of 'Most Upcoming Real Estate Brand' at CNBC Awaaz Real Estate Awards 2013.
- Winner of Emerging Business of the Year – HELLO! Magazine 'Hall of Fame' Awards 2013.
- Winner of Popular Choice Award 'Most Admired Loyalty Program in RE Sector', ABP News Real Estate Awards 2013.
- Lodha Belleza (Hyderabad) recognised as the best 'Ultra Luxury Segment – 50% Complete Residential' project by CNBC Awaaz Real Estate Awards 2013.
- Winner of Indian Digital Media Awards 2013:
 - Lodha Belmondo, Silver Award for 'Best Product / Services (website)'.
 - New Cuffe Parade, Bronze Award for 'Best Integrated Media Campaign – Corporate'.
- Named 'Mumbai's Most Preferred Real Estate Brand' – Morgan Stanley Report, 2012.
- Winner of Green Good Design Award 2012 for World One.
- Winner of Good Practice UN-Habitat Business Award for Integrated Planning for Casa Bella, an integrated township at Palava.
- Winner of International Property Awards 2012 in association with Bloomberg:
 - Lodha Fiorenza, Mumbai for 'Best High-Rise Development'.
 - Lodha Belleza, Hyderabad for 'Best High-Rise Architecture'.

- Lodha Golflinks, Palava for 'Best Residential Golf Development'.
- Named 'Most Preferred Real Estate Brand in Mumbai' – Morgan Stanley Research, November 2012.
- Named 'Most Desirable Real Estate Brand in Mumbai' – Lokmat BDI Survey, January 2010.

Recent Completed Projects (Lodha Residential, Casa Residential, Lodha Office Spaces)

Lodha Costiera, Nepean Sea Road
Lodha's Château Paradis, Worli Sea Face
Lodha Bellissimo, Mahalaxmi | Lodha Primero, Mahalaxmi | Lodha Aria, East Parel
Lodha Grandeur, Prabhadevi | Lodha Palazzo, JVPD Scheme, Juhu | Lodha One, JVPD Scheme, Juhu | Lodha Aurum, Kanjurmarg
Lodha Imperia, Bhandup | Lodha Aqua, Dahisar
Lodha Luxuria, Thane | Lodha Paradise, Thane
Lodha Aristo, Thane | Lodha Golflinks, Palava
Lodha Goldcrest, Lonavala | Casa Ultima, Thane
Casa Essenza, Dahisar | Casa Bella, Palava
Lodha Excelus, Mahalaxmi | Lodha Supremus, Worli | Lodha Supremus, Upper Worli
Lodha Supremus, Kanjurmarg | iTHINK by Lodha, Kanjurmarg | iTHINK by Lodha, Thane
Boulevard Shopping, Thane

Ongoing Projects: Office Spaces

Lodha Supremus, Powai | Lodha Supremus, Thane

Ongoing Projects: Residences

World One, Upper Worli | World Crest, Upper Worli | The Park, Worli | Trump Tower Mumbai, Worli | Lodha Venezia, Parel | Lodha Elisium, New Cuffe Parade | Lodha Dioro, New Cuffe Parade
Lodha Evoq, New Cuffe Parade
Lodha Estrella, New Cuffe Parade | Lodha Fiorenza, Goregaon | Lodha Aurum Grandé, Kanjurmarg | Lodha Belmondo, Pune
Lodha Belleza, Hyderabad | Lodha Meridian, Hyderabad | Casa Royale, Thane | Casa Bella Gold, Palava
Casa Rio, Palava | Casa Rio Gold, Palava | Casa Paradiso, Hyderabad

Upcoming Projects

Residences at Altamount Road, Walkeshwar, Prabhadevi, Andheri and Thane | Bungalows at Palava and Pune

Commitment to communities

LODHA FOUNDATION

Lodha Group's vision – 'Building a Better Life' – extends to its commitment to society. The Group makes significant efforts to improve and uplift the areas it works in and the communities it works in, with over 2% of the Group's annual profits dedicated to social programmes.

Registered as Lodha Charitable Trust, Lodha Foundation was established in 2007 and implements developmental initiatives in Mumbai, Thane and Kalyan-Dombivli Region. The Foundation focuses on assisting families to be self-sufficient by ensuring that at least one member of the family is employable. In order to achieve this goal, the foundation focuses on education and vocational training.

Education:

- **Chandresh Lodha Memorial School:** Over 5,000 students from low-income families receive high-quality, subsidised education through the two branches of the Chandresh Lodha Memorial School in Dombivli and Nalasopara. Highest quality education is provided at a fee of less than INR 500 per month, ensuring that every child has access to a brighter future regardless of the financial standing of the family.
- **Lodha Foundation Scholarships:** Each year, the Foundation offers scholarships to over 1,000 students from economically disadvantaged backgrounds. The scholarships provide up to 75% of the school fees and other education-related costs for students who exhibit good academic performance.
- **Lodha Foundation International Study Scholarships:** These are awarded each year to three students of outstanding academic merit, who need financial aid to enable them to pursue higher education outside India. The goal of this initiative is to inspire them to return and contribute to Indian society.
- **Career Guidance Camps:** These are regularly organised to provide useful information on career planning. These camps organise aptitude and interest tests, and workshops for students and their parents on subjects like career guidance, board exam preparations, the role of parents in developing their child's career, and

so on. A total of 15 programmes are organised each month, in collaboration with schools and colleges. The Foundation also organises English-speaking courses for housewives and youth in its designated areas.

- **Mobile Crèches:** Day-care centres are established in conjunction with Mumbai Mobile Crèches to offer crèche, education and nutritional support to children up to 14 years of age at various Lodha construction sites, thereby providing a safe and conducive environment for the children of construction workers.
- **Mentorship:** Lodha Foundation offers its associates the opportunity to act as mentors to children aided by the Foundation.

Vocational Training:

The Foundation conducts vocational training in a variety of fields like computer programming, vehicle repair, mobile repair, mehendi application and more. The courses benefit over 2,000 individuals each year, empowering them with life skills to ensure long-term employment.

Health:

- **Mobile Health Clinics:** Lodha Foundation runs three medical vans which organise free medical camps for three hours every morning and evening for communities in slums and low-income housing societies. We have four such units which provide a range of health services to the slum and chawls which include, general check-up, blood glucose measurement, BMI, ECG scan, CBC count, bone density scan (for osteoporosis) etc. The mobile health clinics have helped about 60,000 patients annually.
- **School Health Camps:** Regular health check-ups are organised for children studying at primary and secondary levels in 35 government-aided and private schools. Students avail facilities like general check-up, dental check-up, ENT check-up, gynaecology check-up for girls, eyesight check-up etc. Each student is provided with medicine and a health card with the results of the check-up, plus a copy of the health card for their schools.
- **Nirogi Mahila Abhiyan (Campaign for Disease-Free Females):** This free medical check-up camp has been developed specifically for women and adolescent girls living in Mumbai slums. The camps have been providing services to about 50,000 females every year.

- **Lodha Foundation’s hearse service:** Lodha provides free 24/7 hearse services to the citizens of Mumbai. This service attended to over 750 calls last year.

Empowering Women and Supporting Destitute Women:

- **SHG:** Lodha Foundation has mobilised over 300 women through Self-Help Groups (SHG). These groups undertake regular savings and are involved in various social initiatives. In the last three years, the groups have also undertaken a range of business and social activities.
- **Grain support:** Lodha Foundation has identified over 300 women with no family support or source of income. It supplies these women with a monthly ration comprising of good grains, pulses, oil, spices etc.
- **Training and placement:** The foundation has partnered with various training and placement agencies to achieve the dual objective of vocational training and assisting employment. As part of the initiative, women get placed in housekeeping agencies and provide service as housemaids, cooks etc. while being a part of an organised workforce.

Civic Support:

Lodha Foundation has undertaken a massive cleanliness drive to clean spaces often overlooked even by the BMC – house gullies. Till date, the foundation has cleaned up over 500 house gullies, free of cost. In addition to cleaning, insecticide is sprayed using a fogging machine to ensure that citizens live in a hygienic atmosphere.

Senior Citizens:

- **Computer and Smartphone Training for Senior Citizens:** In keeping with the objective of providing need-based learning to different age groups, this programme was organised to help senior citizens use technology to communicate better and educate themselves. Training is free for men above 50 and women over 45. The initiative has trained 1,500 senior citizens and aims to reach out to 10,000.
- **Joy of Living:** This programme helps about 50 senior citizens on their day-long pilgrimage, every day. This is a hugely popular programme; over 10,000 people have benefited from it till date.

- **Senior Citizen Groups:** The foundation has helped develop senior citizens groups; enabling them to come together for important causes, and for personal growth. We have formed over eight senior citizen groups in Mumbai comprising over 200 senior citizens. This initiative teaches them how to make wills, helps them volunteer for causes, gives them access to health camps and even helps them celebrate the birthdays of group members.

Religious Activities:

- **Lodha Dham, Thane (Shri Sai Dham):** Located on the Mumbai-Nasik Highway, near Thane, the Dham caters to devotees who walk on foot from Mumbai to Shirdi, and is a resting place for all devotees of Shirdi Sai Baba.
- **Lodha Dham, Vasai:** This caters to Jain saints who travel on foot from Mumbai to the rest of India. It provides these saints with food and offers a temple, library and a gathering place for devotees.

Other Social Activities:

- **National Day Celebrations:** 15 August and 26 January are celebrated in more than 1,000 societies and localities in Mumbai, Thane and Dombivli, complete with flag hoisting and refreshments.
- **Malabar Hill Mahotsav:** This month-long flagship event involves 40 different events like football, volleyball, swimming, rangoli, drawing, etc. with over 1 lac participants from schools and the general public. The aim of the programme is to help identify and hone the unique talents of our citizens and school children.
- **Lodha Foundation’s Mumbai Ganesh Festival:** The Foundation sets up a Ganesh pandal each year, to celebrate the 10-day festival of the Elephant God. The pandal in 2012 was voted ‘Best Ganpati Mandal’ (1st runner-up) by Times of India.
- **‘Shreshtha Bharat Day’ – Ae Mere Vatan Ke Logon:** To celebrate the 50th anniversary of this nationalistic song, the function honoured over 100 winners of various valour awards such as Mahavir Chakra and Paramvir Chakra. Held on January 2014, it was attended by over 1,00,000 patriots in the presence of singer and Bharat Ratna award-winner Lata Mangeshkar and Prime Minister Shri Narendra Modi.

- **Drought Relief Work for Satara District:** From June to September 2013, the foundation provided relief to a draught-stricken area with a two-pronged approach: to provide immediate relief by supplying tanker water for household use; and long-term solutions through water harvesting. The Foundation supplied tanker water in 22 villages, delivering on average, 3 lac litres of water on a daily basis to 90,000 villagers. Lodha Foundation also de-silted 19 existing check dams.
- **Fire Relief:** In November 2013, a fire in Ambedkar Nagar slum situated in Cuffe Parade resulted in more than 500 homes being burned down, affecting about 2,500 persons. Lodha Foundation planned an intervention by supplying provisions to a total of 521 affected families.

Environmental Stewardship

Lodha is committed to ensuring that development is done with the greatest respect and reverence for nature and in line with the ideals of our ancient scriptures. Some of the initiatives by Lodha include:

- One of Mumbai’s first completed Gold LEED rated office building.
- Mumbai’s first multi-tenant Platinum LEED office building (under construction).
- Use of solar power through solar power farms at various locations.
- Rainwater harvesting at all developments.
- Recycling of fresh water at all developments.
- Large amount of landscaping and tree plantation at all developments.
- Usage of local materials for construction to minimise pollution.
- Recycling of waste materials to ensure conservation of resources.



Partnering with the best to give you the best

If Lodha Eternis is a one-of-a-kind luxury enclave, it's because the finest names in design, architecture and construction have pooled their considerable talents, to create residences unmatched elsewhere in the country.

Architectural Design:
Kapadia Associates Design LLP
Since its inception in 1991, Kapadia Associates has constantly looked beyond the conventional, continuously exploring the uncharted terrain between architecture and design. As a professional architectural firm, they combine a deep design involvement with optimized managerial processes, to ensure the smooth running of projects from design to execution. The firm has won a number of prestigious awards.

Structural Design - Ramboll India Pvt. Ltd.
Ramboll is renowned for its engineering skills and passion. They are at the forefront of design innovation, applying their experience and technical expertise to a wide range of award-winning projects across the globe. Ramboll was founded in October 1945 in Copenhagen, Denmark. From its beginning as a two man consultancy, Ramboll has grown to an international corporation employing more than 12,500 dedicated

specialists operating out of more than 300 offices and 30 countries worldwide. Foraying into India since 2006, the firm has worked on office developments, schools and universities, research buildings, housing, factories, museums, health projects, sports facilities, business parks, shops and community buildings.

MEP: AECOM INDIA Pvt. Ltd.
A Fortune 500 company with an uncommon blend of visionaries, designers and engineers, AECOM has grown to become the world's No.1 ranked engineering design firm specializing in MEP design, sustainability and solid waste Management. It has earned global recognition and acclaim for a portfolio of significant projects including the Hyatt Group of Hotels, the National Stock Exchange in Mumbai, Hyderabad International Airport, Fortis Hospital Complex in Gurgaon and the ISKCON Temple, New Delhi.

Landscape design: Sitetectonix, Singapore
Established in 1995 in Singapore, Sitetectonix is globally acclaimed for their contribution to landscape architecture, urban design and planning. The firm boasts an impressive and wide-ranging portfolio, and several awards for design excellence. They are known for innovative, cost-effective designs that take into account the environmental, social, cultural, historic and economic circumstances of each project, and are executed with uncompromising quality and dependability. Their high-profile projects include the Anglo-Chinese School, Far East Square and ITE First regional campus, Singapore as well as the Kanuhura Beach Resort, Maldives and the much-awarded Hotel Sofitel Central, HuaHin.

Contact

Corporate Address:
Lodha Excelus,
N.M. Joshi Marg,
Mahalaxmi,
Mumbai - 400 011, India.
Tel: +91 22 6642 9999.

Site Address:
Lodha Eternis, End of 11th Road,
Near Hotel Tunga International,
Off Mahakali Caves Road,
Andheri (E), Mumbai - 400 093.
Tel: +91 22 2832 5911.



^ Asia-Pacific region. Disclaimer: The plans, specifications, images and other details herein are only indicative and the Developer/Owner reserves the right to change any or all of these in the interest of the development. This printed material does not constitute an offer and/or contract of any type between the Developer/Owner and the recipient. Any purchaser/lessee of this development shall be governed by the terms and conditions of the Agreement for Sale/Lease entered into between the parties, and no details mentioned in this printed material shall in any way govern such transactions. Tolerance of +/- 2% is possible in the unit areas on account of design & construction variances. Images are for representative purposes only. Conditions apply.