

# GIRIJA HEIGHTS

Plot no : 429, Sec no : 24, Ulwe

Biggest Carpet  
area in town ...

Project by :



**GUNINA DEVELOPERS**





# PURE RESIDENTIAL BUILDING WITH ALL MODERN AMENITIES



**GIRIJA HEIGHTS**

Project by :



**GUNINA DEVELOPERS**



**BIGGEST CARPET AREA IN TOWN WITH ALL  
ROOMS HAVING HUGE BALCONY**

**1BHK WITH MASTER BEDROOM &  
STANDARD 1BHK FLATS**

**G+7 PURE RESIDENTIAL BUILDING WITH  
AMPLE CAR PARKING SPACE**

**CIDCO TRIPARTITE PLOT**



**GIRIJA HEIGHTS**

Project by :



## AMENITIES

PURE RESIDENTIAL BUILDING  
REPUTED MAKE LIFT  
GANESH TEMPLE  
INDOOR GAMES AREA  
SIT OUT AREA ON ROOF TOP  
DECORATIVE ENTRANCE LOBBY

## SPECIFICATION

CIDCO TRIPARTITE PLOT  
VITRIFIED 2\*2 TILES  
MATT FINISH WALL TILES  
FULL KITCHEN TILES  
FULL BATHROOM AND WC TILES  
CERA/JAGUAR PLUMBING FITTING  
POLYCAB WIRING  
LEGRAND SWITCHES  
ALL WOODEN DOOR'S INCLUDING BATHROOM  
GODREJ/EUROPA LOCKS  
REPUTED MAKE LIFT  
GARDEN PLAY AREA ON ROOF  
BRANDED EXTERNAL AND INTERIOR PAINT



# GIRIJA HEIGHTS

Project by :





ADJ. SEC.23  
ULWE NODE

## Location Advantages

- NEAR TO INTERNATIONAL AIRPORT (WORK IN PROGRESS).
- 10 MIN WALK FROM BAMANDONGRI RAILWAY STATION
- NEAR TO PALM BEACH ROAD - 5 TO 10 MIN DRIVE.
- 20 MIN DRIVE TO KHARGHAR (CENTRAL PARK, ISKCON TEMPLE, BOLLYWOOD THEME PARK, GOLF COURSE)
- 20 - 30 MINS DRIVE TO PANVEL.
- 90 MTR. ROAD CONNECTING TO JNPT.
- NEAR TO UPCOMING BALAJI TEMPLE
- CONNECTIVITY TO SOUTH MUMBAI VIA TRANS-HARBOUR LINK

## GIRIJA HEIGHTS

Project by :



GUNINA DEVELOPERS

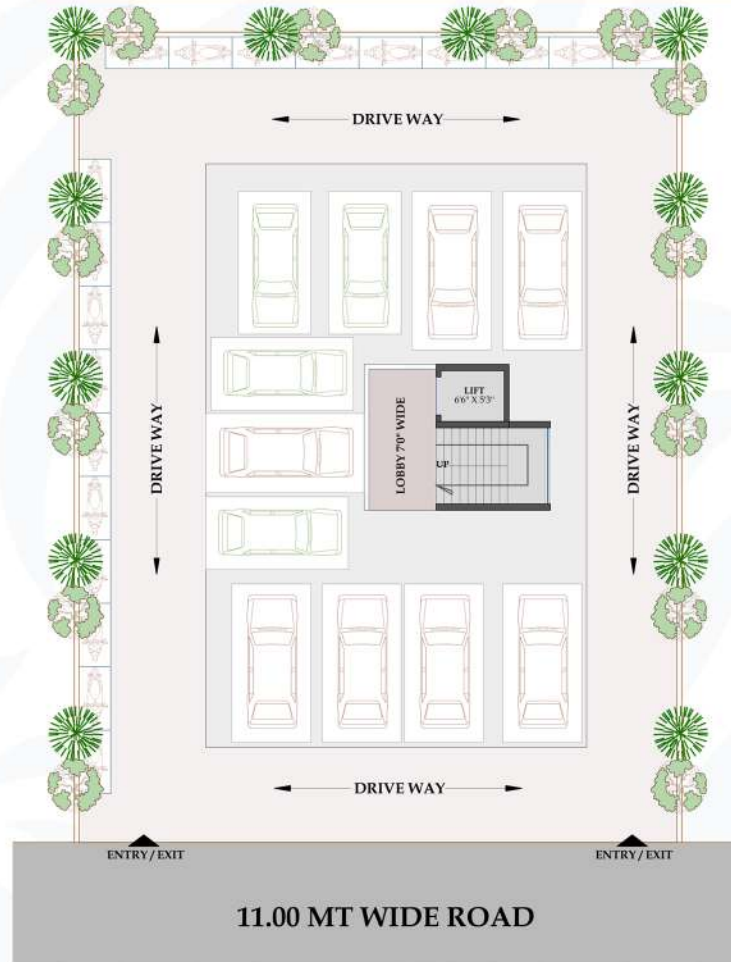
Project by :

# GIRIJA HEIGHTS

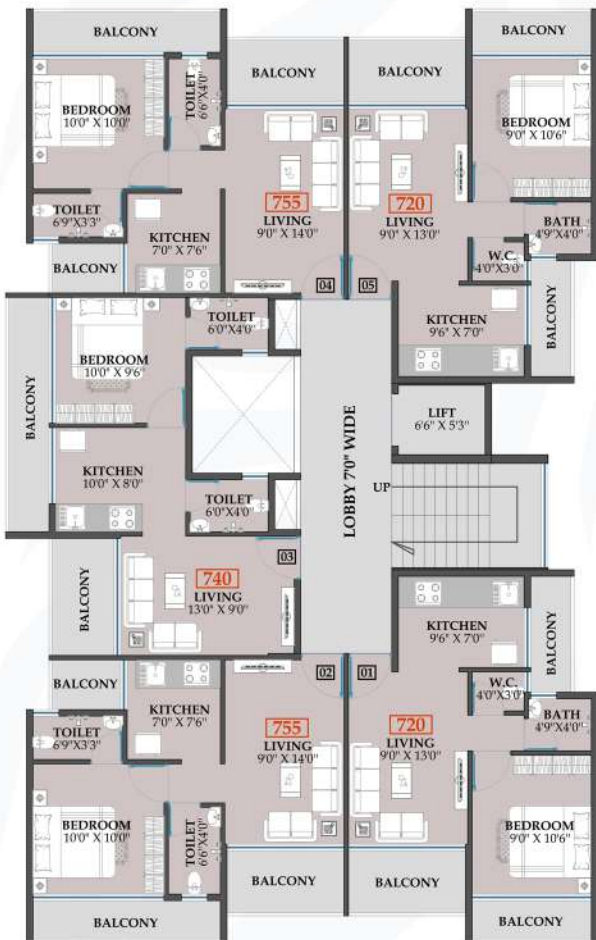


GUNINA DEVELOPERS

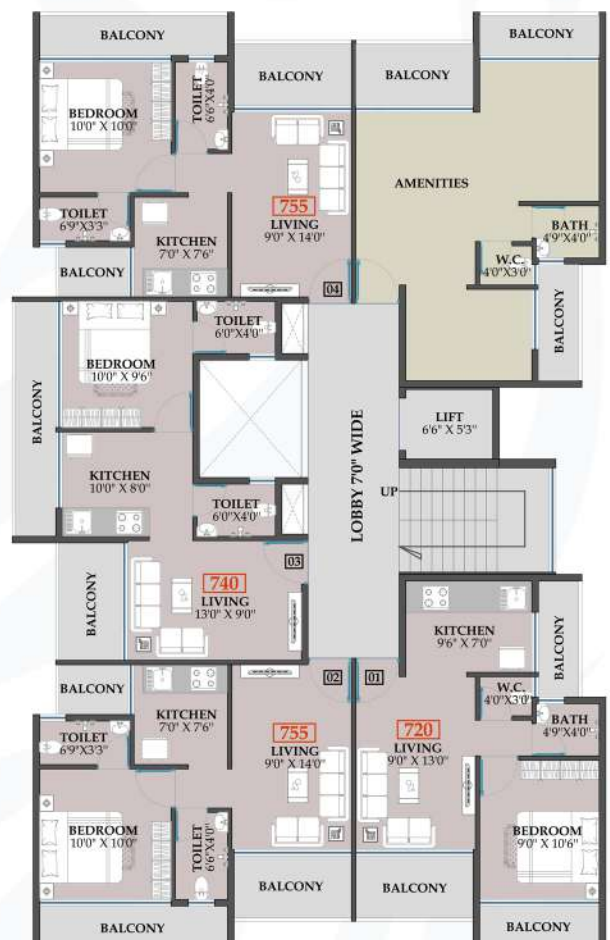
## GROUND FLOOR



## 1<sup>ST</sup> FLOOR TO 6<sup>TH</sup> FLOOR



## 7<sup>TH</sup> FLOOR





# COMPLETED PROJECTS



## GIRIJA HEIGHTS

Project by :



**GUNINA DEVELOPERS**

# GIRIJA HEIGHTS

Project by :



**GUNINA DEVELOPERS**



RERA Number : P52000052321