



AKSHAR  
**ALTORIOS**  
HADAPSAR, PUNE

## THE LIFESTYLE THAT IS UP-CLASS AND ICONIC



ARTIST IMPRESSION

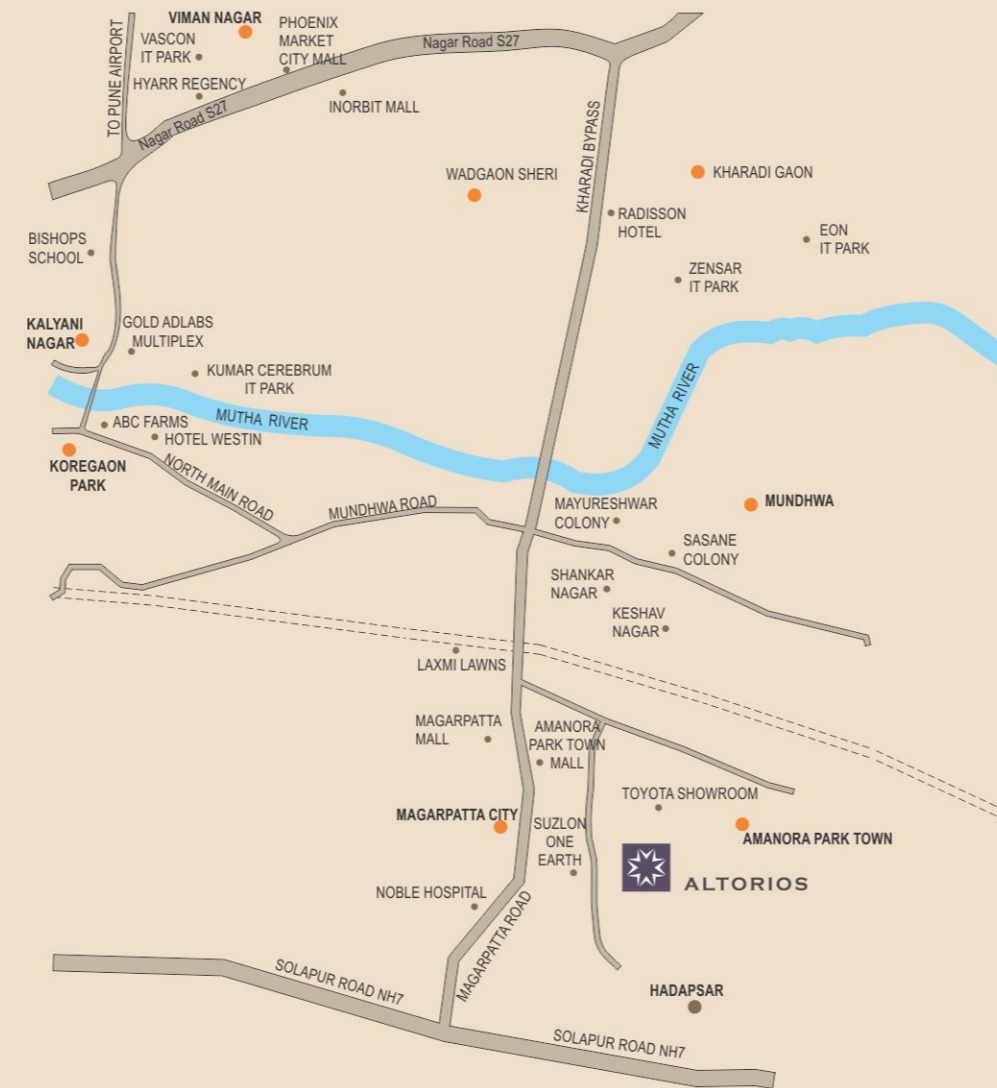
### 1, 1.5, 2 & 3 BHK Ultra-luxury Homes

Experience the rise of an icon at Hadapsar, Pune. Explore the icon of luxury which is setting up a posh, pleasant and pleasurable lifestyle for you. Embedded with world class amenities and upper-crust podium features, the ultra-luxurious 1, 1.5, 2 & 3 BHK homes of Altorios offer you a life in a well-connected location with a world of conveniences all around.

**Welcome to Altorios.**

**Welcome to embrace the iconic luxury in your life.**

### Location Map



AKSHAR  
**ALTORIOS**  
HADAPSAR, PUNE

Site Address:

Survey No. 172 & 174, Near Amonara Park Town,  
Magarpatta City Road, Hadapsar, Pune.



Akshar Skyward Constructions

Corporate Office:

225, Second floor, Big Splash, Plot No. 78 & 79, Sector 17,  
Vashi, Navi Mumbai- 400 705.

Tel : +91-22-2788 9991-98, Fax : +91-22-27889982

Email : info@akshardevelopers.com, www.akshardevelopers.com

Disclaimer: The developers shall have absolute right and authority to decide the manufacturer / make / size / color / variant of all the above amenities without having any reference or recourse. The intent purchasers shall not object to any selection so made by the developers.

## THE ICON OF LUXURY



Project By  **AKSHAR**  
INSPIRE LIFE



### THE ICONIC PODIUM FEATURES

- Refreshing swimming pool with kid's pool
- Well-stocked library cum study room
- Multipurpose mini banquet hall/ community hall
- Fully-equipped children's gaming room and activity area
- World-class health club with gymnasium & steam room
- Landscaped podium garden with jogging track
- Senior citizen sit out area



### THE ICONIC EXTERNAL AMENITIES

- Earthquake resistant RCC framed structure
- Beautifully designed, well-planned elevation of building
- Designer entrance foyer and lift lobbies
- Quality checked tile flooring in compound
- Two high-speed automatic lifts in each wing
- Stand by generator for lift & common lighting
- Special water proofing treatment by reputed firms
- Furnished office for society maintenance affairs
- Letter Box for each member at ground floor / stilt area
- Decorative railing/ wall for compound
- Fire extinguishers at strategic locations like electric room, lift room & security post
- Pre & post construction pest control
- Decorative lighting fixture on terrace & on gateposts
- Decorative fencing with decorative lighting around the plot
- Decorative Main Gate (as per the elevation of the building).
- Advanced fire safety system

### Plan (Wings A & D)



### THE ICONIC INTERNAL SPECIFICATIONS

#### Kitchen

- Modular kitchen
- Marbonite vitrified flooring in kitchen
- Granite kitchen platform
- Branded stainless steel sink
- Elegant wash basin in attached bathrooms
- Space earmark for washing machine & wash basin

#### Toilets

- Glazed tiles on floors & full height glazed tiles on walls
- Premium fittings from top quality sanitary ware
- Provision for hot water geyser in all bathrooms
- Concealed plumbing with provision for exhaust fan
- Non-wood top quality FRP doors
- Elegant counter washbasin in attached bathrooms
- Louvered glass window in anodized/ powder coated aluminium frame

#### Doors & Windows

- Paneled main door
- Commercial veneer finished flush doors for all internal doors
- Anodized/ powder coated heavy section aluminum sliding on granite sills with tinted glass
- One panel of mosquito preventive net in all bedrooms
- All windows with protective Chajja & railings (as per layout of building)

#### Flooring

- Marbonite/ vitrified flooring in living room, bedroom & kitchen
- Designer ceramic finish in all terrace /balcony flooring

#### Walls & Paints

- Internal walls with POP finish
- Velvet paints of premium quality on interior walls
- External walls painted with good quality acrylic textured paints

#### Electrification

- Concealed copper wiring with adequate points for AC, refrigerator, geyser, washing machine, TV, cable, and telephone etc.
- Concealed copper wiring with branded modular switches
- 1/3 phase electricity connection (as per the size of the flat) to every flat with circuit breaker ELCB

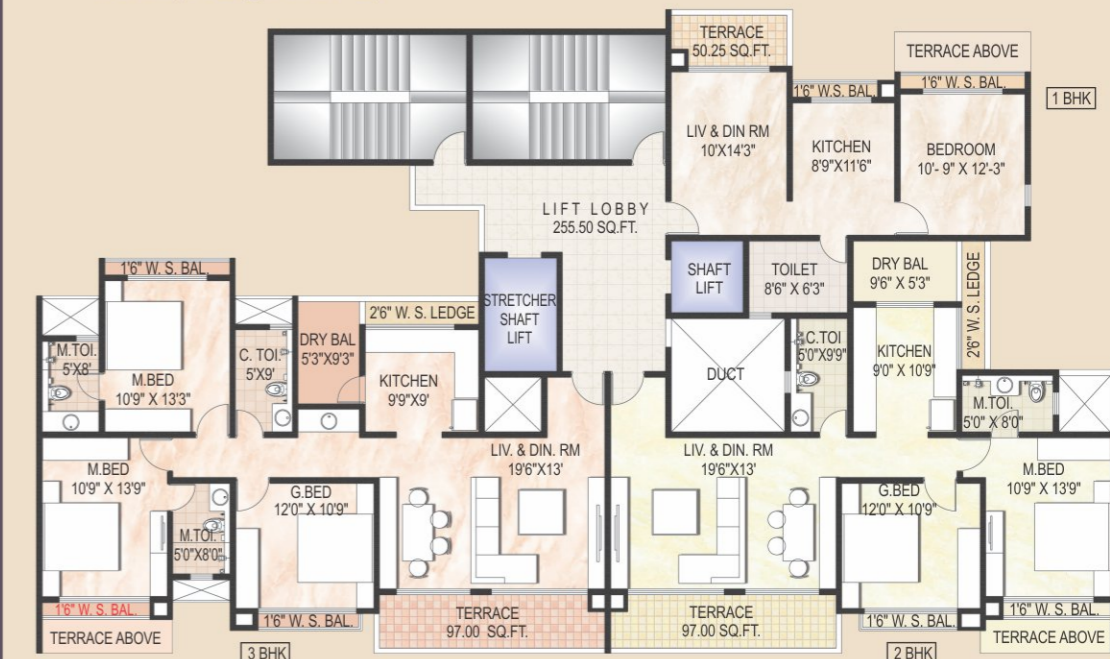
#### Plumbing

- Concealed piping system in kitchen and all toilets
- First quality C.P. fittings of reputed make

#### Security

- Video door intercom system for all flats with 24 X 7 security surveillance

### Plan (Wings B & C)

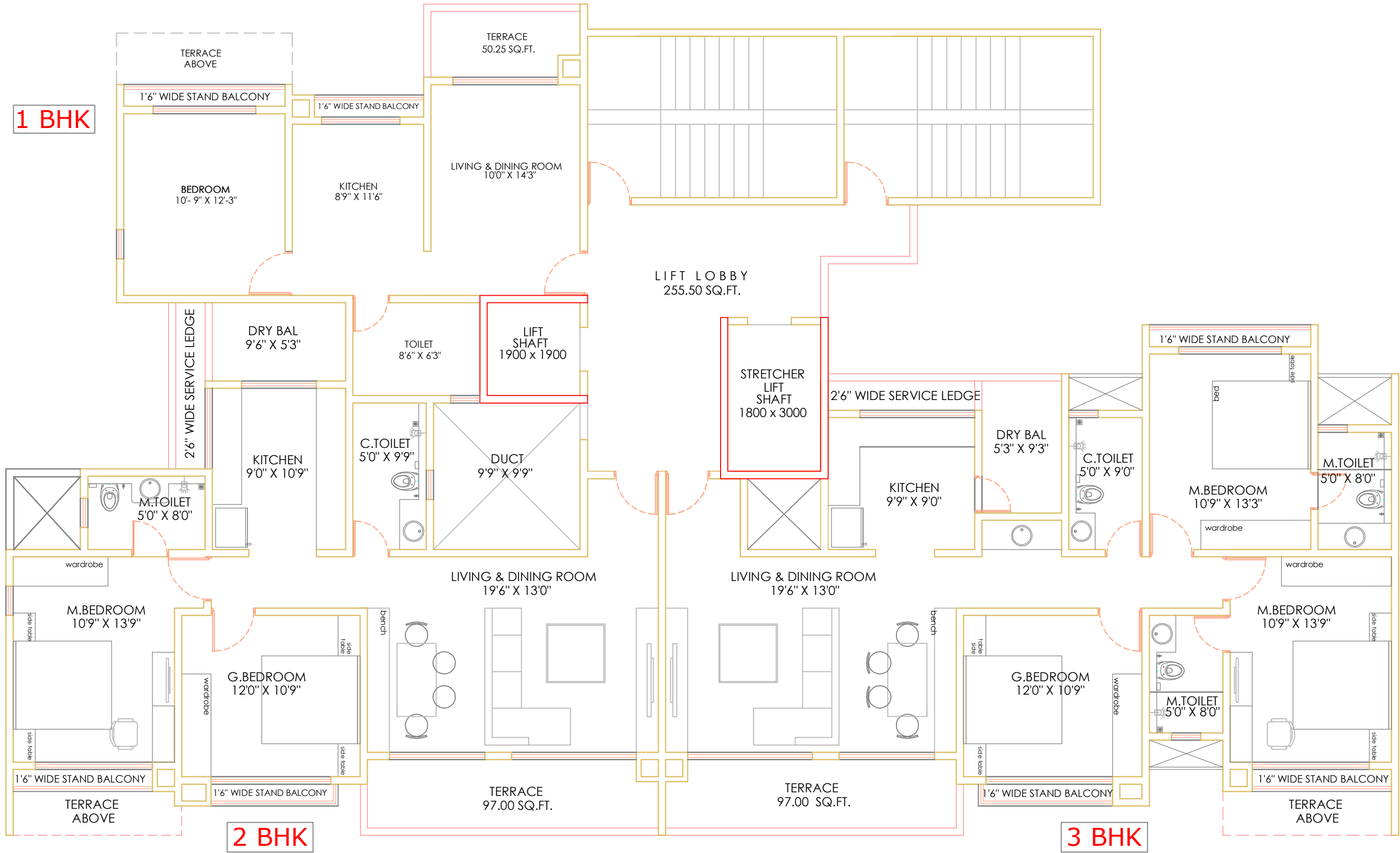






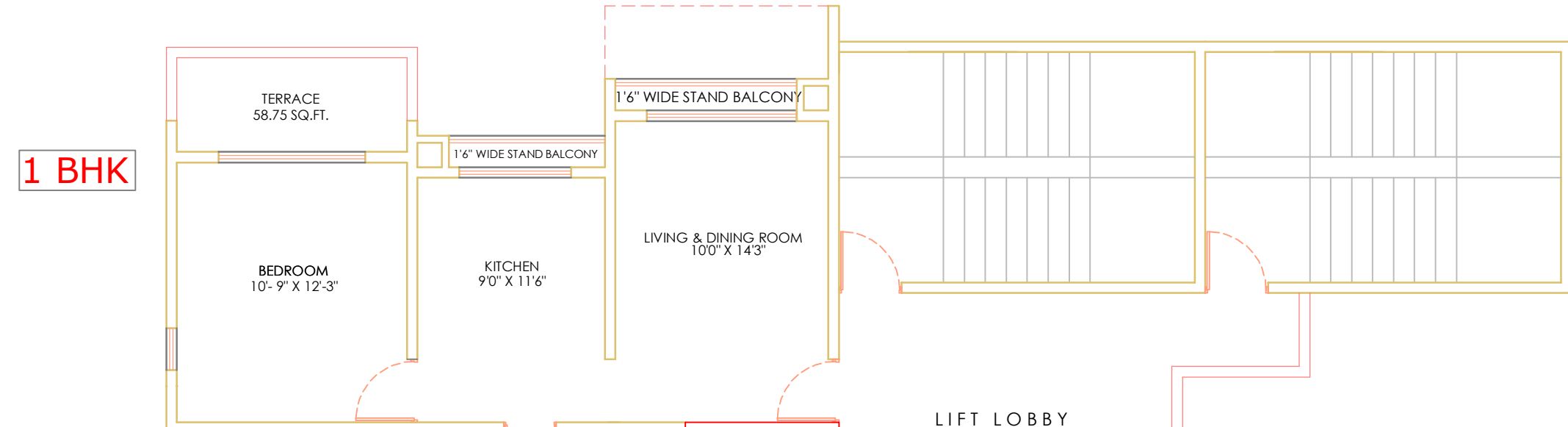






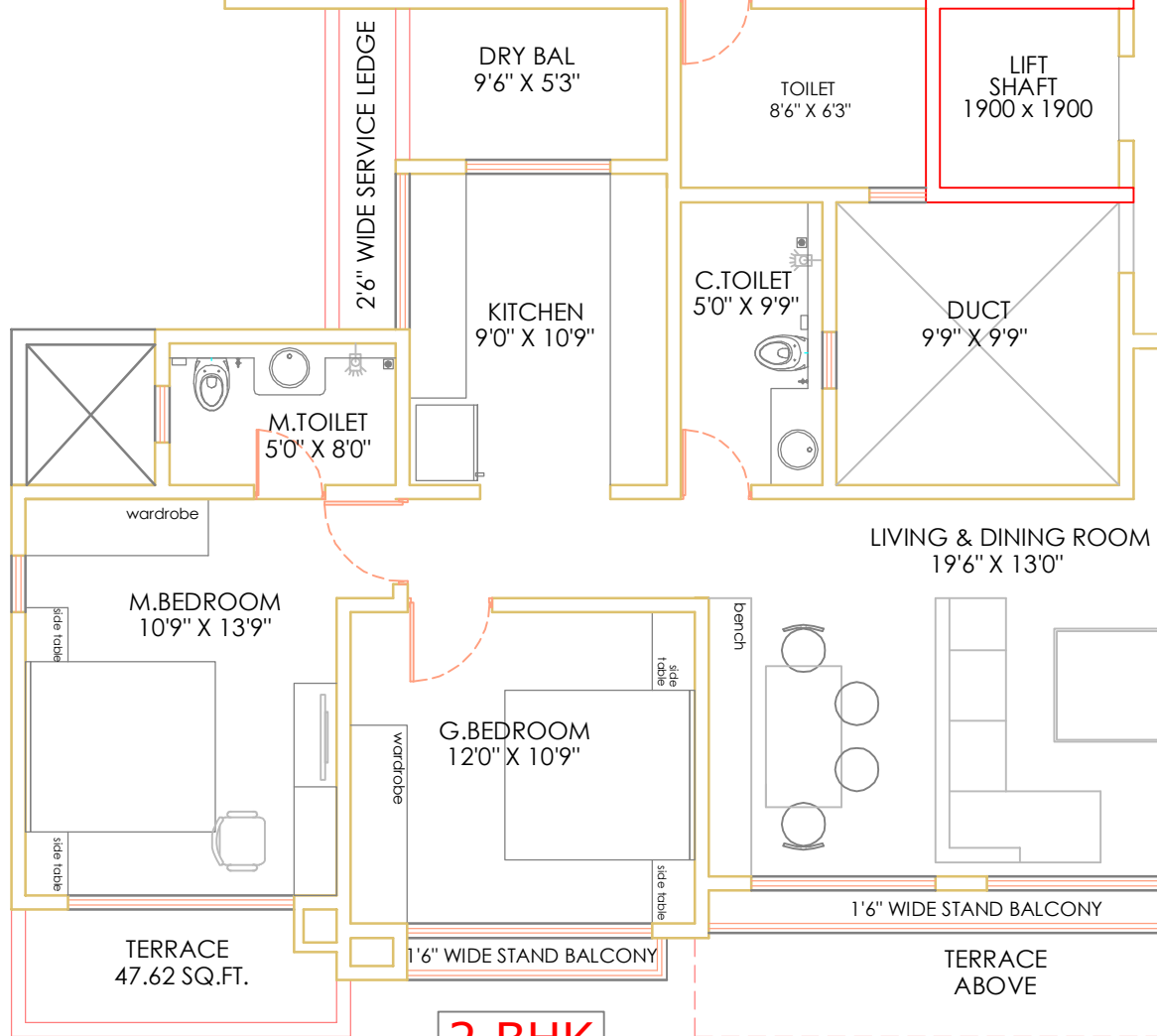
# BUILDINGS - B ODD LVL PLANS

1 BHK

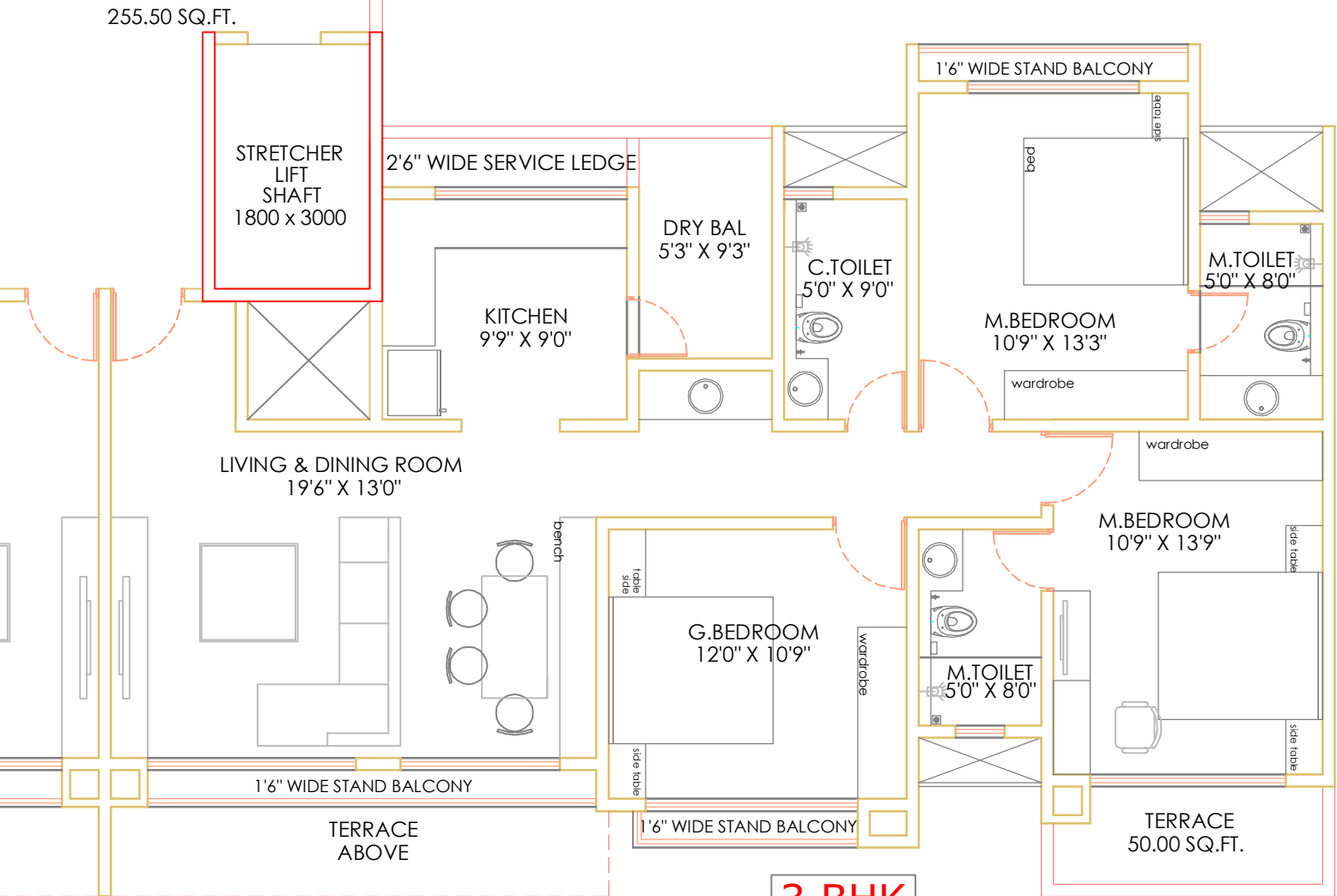


LIFT LOBBY  
255.50 SQ.FT.

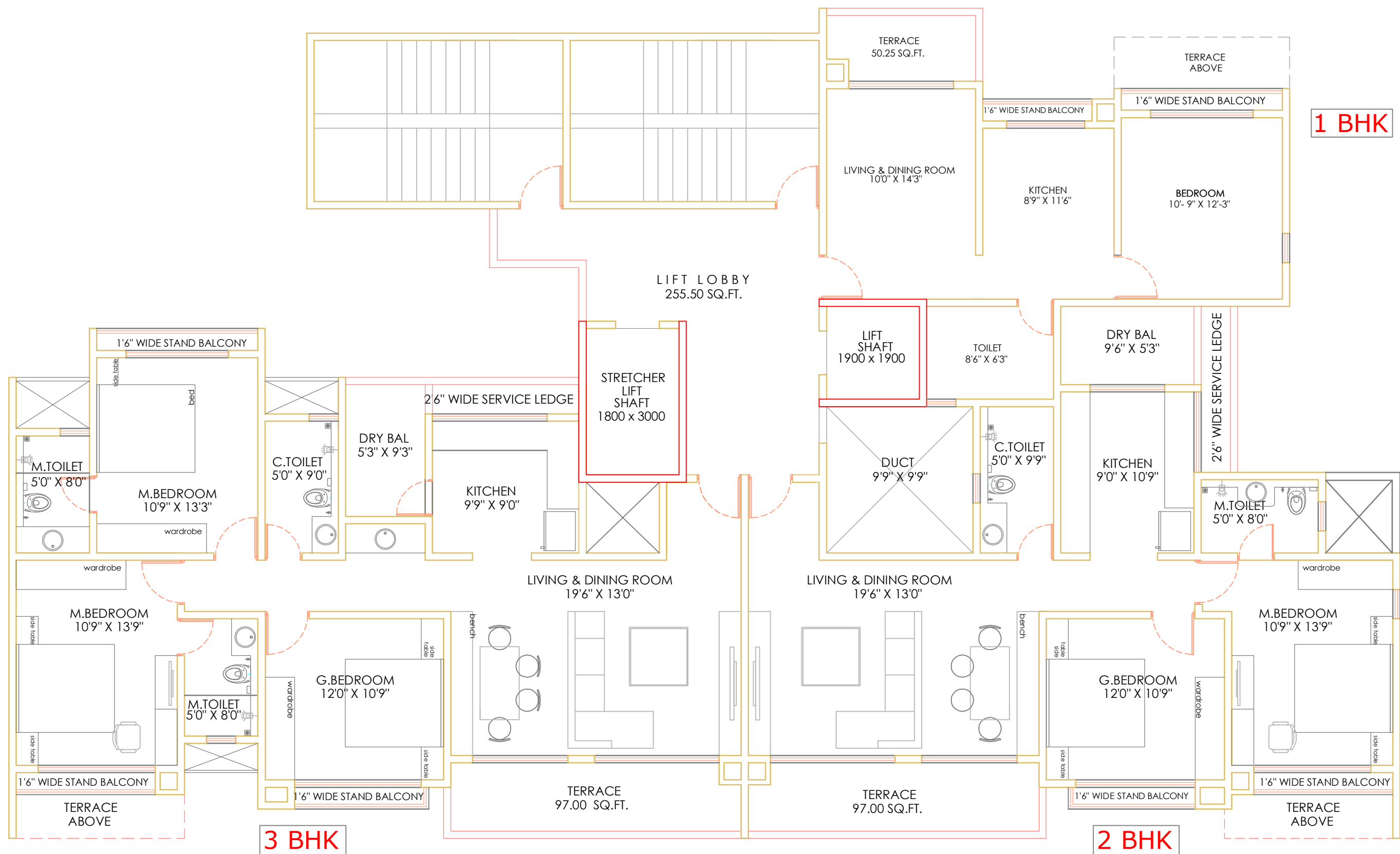
2 BHK



3 BHK

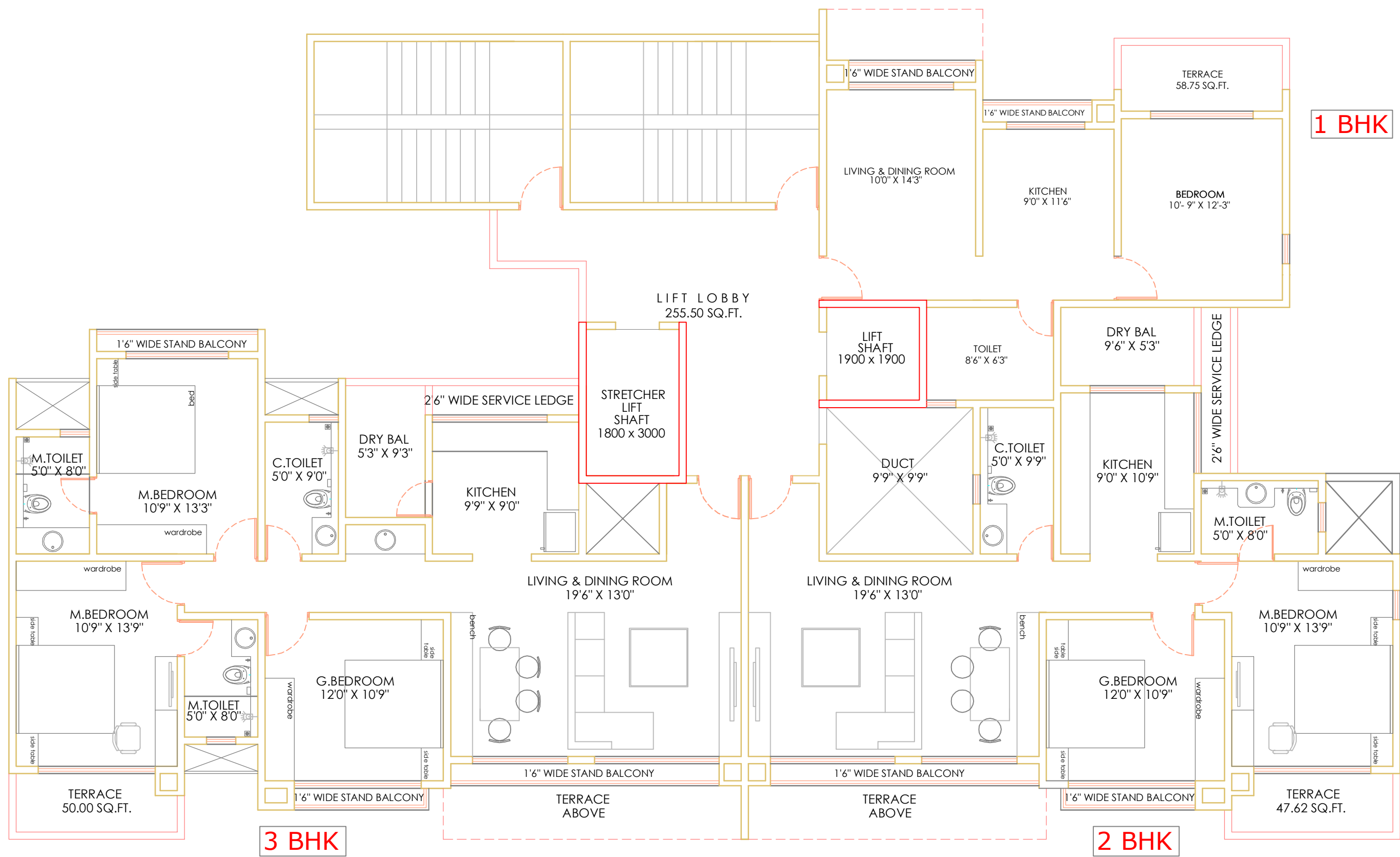


# BUILDINGS - B EVEN LVL PLANS



# BUILDINGS - C ODD LVL PLANS





# BUILDINGS - C EVEN LVL PLANS