



SURA J

THE PERFECT LOCATION.
THE PERFECT BALANCE.
**Welcome to your life's
new sweet spot.**

INTRODUCING 1 & 2 BHK
RESIDENCES AT GOKHALE ROAD,
DADAR WEST.

Louisandra
by SURA J

louisandrabyuraj.com

At Suraj, we believe that a well-balanced life starts with a PERFECT LOCATION.

Located in the bustling heart of Mumbai, Louisandra epitomises what it means to live life in perfect balance.

An elegantly designed apartment community, the 22 storey high rise is located in close proximity to the city's business corridors, schools, medical facilities, popular entertainment and retail attractions, allowing residents to seamlessly settle into the surrounding urban reality.

Louisandra is at a stone's throw away from spiritual places of worship like Siddhivinayak Temple, Jain Temple and Portuguese Church, while located in a neighbourhood that is rooted in culture and yet very cosmopolitan.

Where else can you find a life of perfect balance? And that too one in a perfect location?

Welcome to Louisandra.

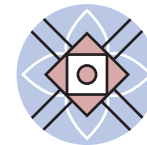
Welcome to the sweet spot of living.

22 storeys tower comprising of 1 & 2 BHK residences available in different configurations.

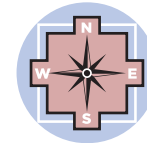


Artist's Impression

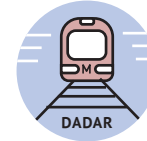
All the apartments are entirely VAASTU compliant.



Within minutes from the upcoming Dadar Metro Station.



Dadar - vibrant, energetic and a confluence of the old world with the new lifestyle.



Easy to invoke Lord Ganesha's blessings at Mumbai's iconic Siddhivinayak Temple.



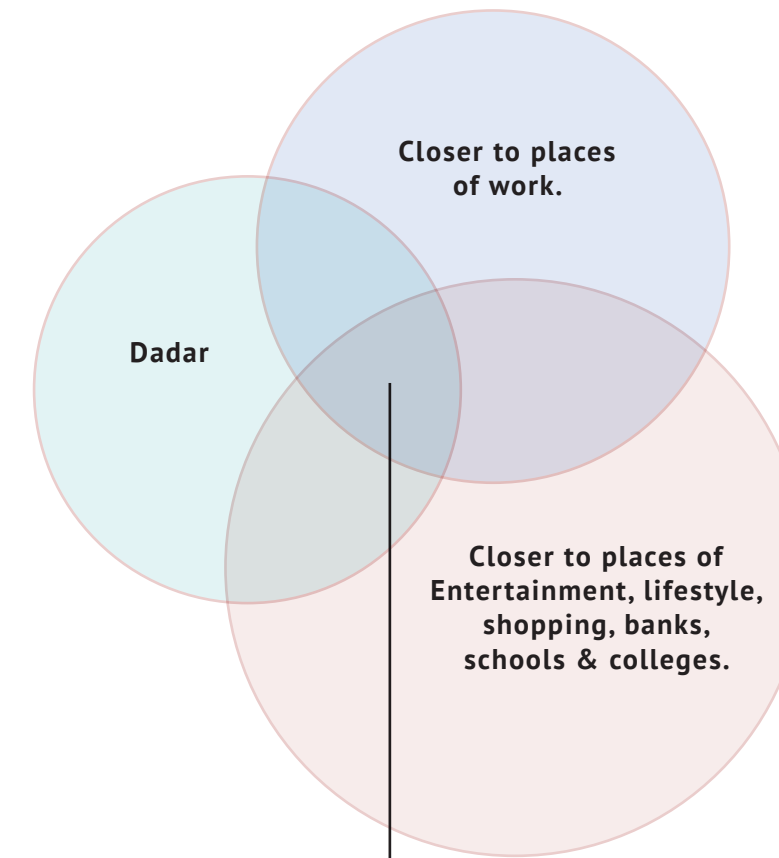
Stunning view of the Bandra-Worli Sea Link and the city.



Project designed by Award-winning architect, Ar. Vivek Bhole.



A PERFECT BALANCE OF LOCATION, LIFESTYLE AND CONNECTIVITY.



Louisandra

by SURAJ

YOUR LIFE'S IN A SWEET SPOT WHEN YOU CAN JUST WALK AT A WHIM.

- Dadar Station - 10 mins. by walk
- Dadar Beach - 8 mins. by walk
- Siddhivinayak Temple - 5 mins. by walk
- Dadar Metro Station - 2 mins. by walk

Well designed and well planned layout of 1 & 2 BHK residences with different sizes of 1 BHKs - 345 / 412 / 418 sq ft. each available between the 2nd to the 14th floor currently.

* 2 BHK units between the 15th till the 22nd floor have already been sold out.



KEY EXTERNAL AMENITIES

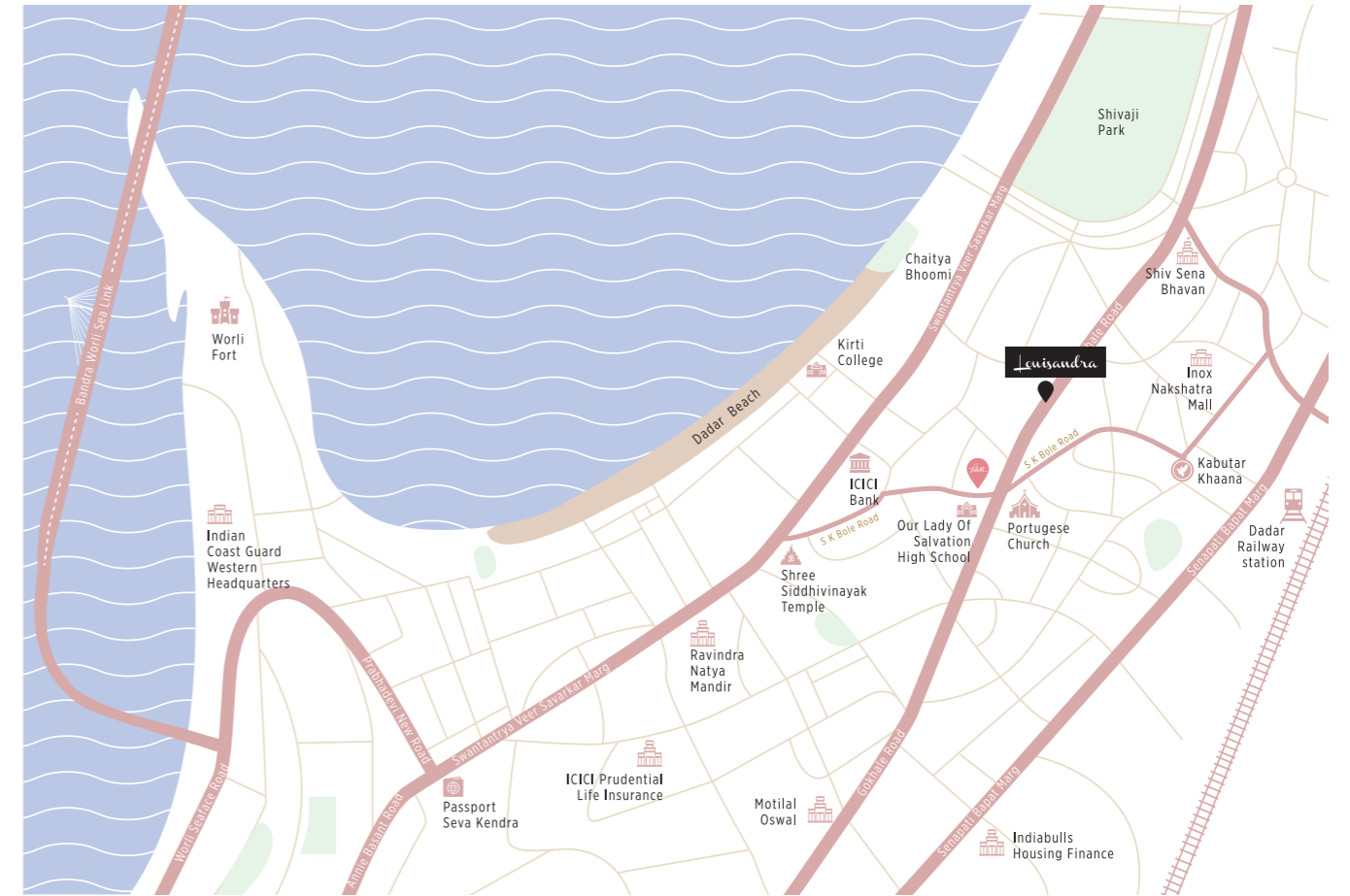
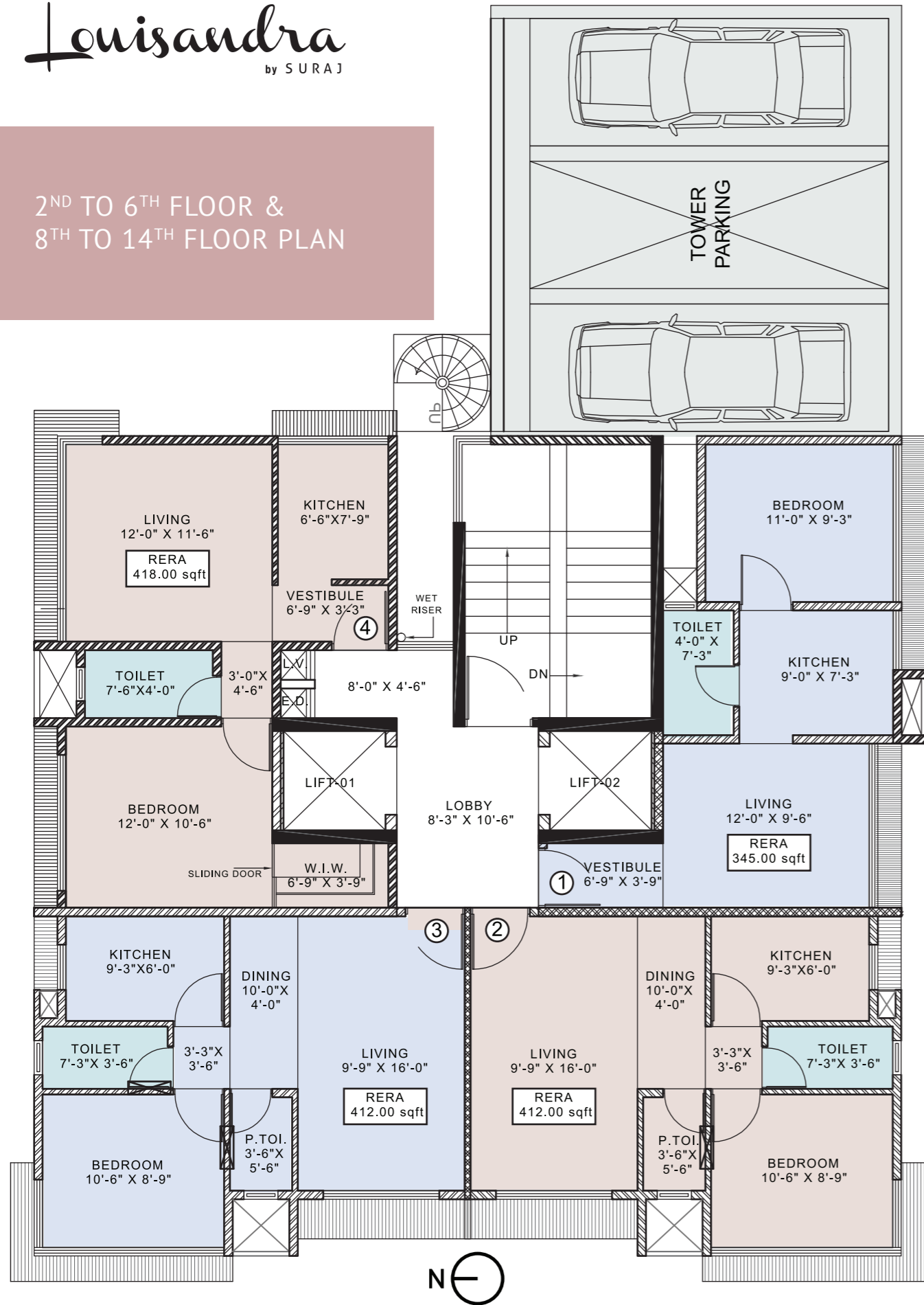
- Main Entrance Lobby at Ground Floor
- Tower Parking for Cars
- 24 Hours Security
- Fully Equipped Gymnasium
- RO Water System
- Fire Fighting Equipment
- Power Back-up Facility
- Rainwater Harvesting System
- Earthquake Resistant Structure



KEY INTERNAL AMENITIES

- Branded vitrified tiles in all the rooms
- CP & Sanitary fittings of a reputed brand
- Premium quality granite kitchen platform with SS type Franke sink.
- Premium aluminium windows with anodised / powder coated finish
- Black granite / marble sills.

2ND TO 6TH FLOOR &
8TH TO 14TH FLOOR PLAN



Suraj has constructed and sold exclusive residential apartment buildings to ICICI Bank Ltd, Union Bank of India and National Stock Exchange of India Ltd. Louisandra at Gokhale Road, Dadar

is their latest offering in the smart luxury portfolio. Besides this, the group has seven other ongoing residential projects between Dadar, Mahim and Prabhadevi.

Suraj. One name you can be sure of.

| | | | |
|--|---|---|--|
| <p>of understanding space, design and construction</p> | <p>Deeply rooted in Dadar - Mahim - Prabhadevi locale</p> | <p>delivered across residential & commercial segments</p> | <p>of space meticulously executed in prime locales</p> |
|--|---|---|--|



For enquiries, call 75067 87148 / 022 2446 0707 / 2444 9797 or email - sales@surajstate.com

Corporate Office : 15-B, Mahim Mata Building, Marinagar Colony, Mahim West, Mumbai 400016
Site Address : Louisandra , FP No - 274, Gokhale Road, Dadar West, Mumbai 400028

MahaRERA No. P51900010078 and available on the website <https://maharera.mahaonline.gov.in>
www.surajstate.com