










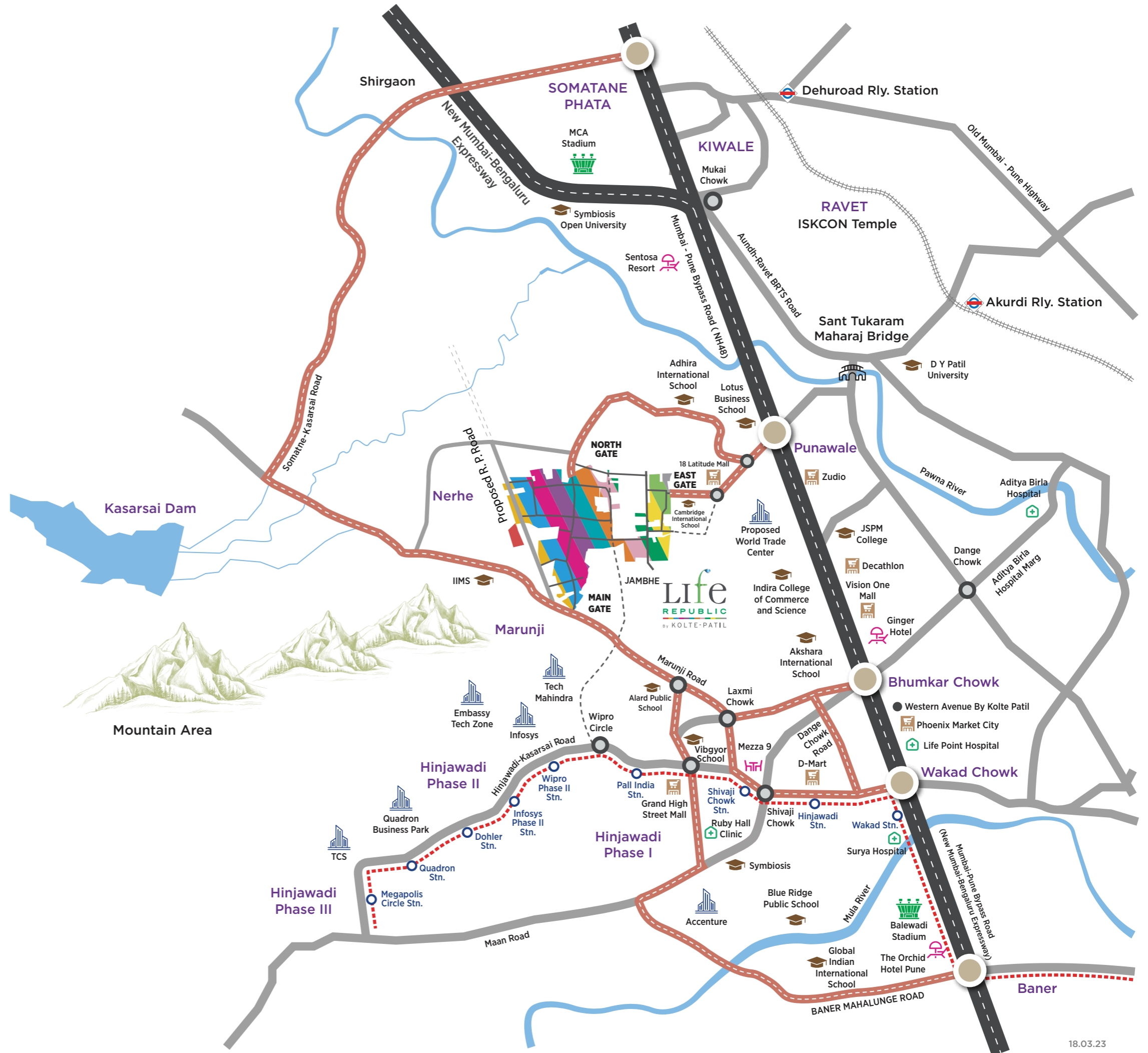


atmos

At Life Republic, Near Hinjawadi

# LEGEND

-  Expressway
-  Main Roads
-  Main Roads Leading to Life Republic
-  Metro
-  Railway
-  Rivers
-  Bridge
-  Chowk
-  Railway Station
-  Junctions Connecting Life Republic
-  Future Roads



# LOCATION HIGHLIGHTS

## SCHOOLS

- Crimson Anisha Global School
- Indira International School
- Akshara International School
- Vibgyor School
- Mahindra International School

## RETAIL & HIGH STREET

- DMart
- Smart Bazar
- Decathlon
- Balewadi High Street
- Croma

## COLLEGES

- NICMAR
- DY Patil University
- Indira Institute of Management
- JSPM
- Alard College
- IIMS

## ENTERTAINMENT

- PVR
- Carnival Cinemas
- INOX
- Butterfly Trampoline Park
- Dinosaur Garden

## HOSPITAL

- Apollo Clinic
- Aditya Birla Hospital
- Surya Mother and Child Super Speciality Hospital
- Life Point
- Sahyadri Hospital

## IT PARK

- TCS
- Wipro
- Infosys
- Embassy Tech Zone
- Quadron Business Park

## SHOPPING MALL

- Elpro City Square Mall
- Grand High Street Mall
- Xion Mall Hinjawadi
- Vision One
- Phoenix Market City (Upcoming)



Artistic Impression

Set foot into **swag!**

HIGH RISE TOWERS

---

2 CLUB HOUSES

---

DEDICATED PARKING SPACE

---

PREMIUM INDOOR SPECIFICATIONS

---

50+ AMENITIES



Artistic Impression

# CLUB HOUSE 1



Artistic Impression

**CLUB HOUSE 2**



Artistic Impression

**KIDS PLAY AREA**

# **MASTER PLAN**



# MASTER PLAN



## LEGEND

1. ENTRANCE GATE
2. DROP-OFF POINT

### CLUB HOUSE 1 AT GROUND LEVEL

3. ENTRANCE TO OPEN SPACE ON GROUND
4. RAMP
5. VIEWING DECK OVERLOOKING PARTY LAWN
6. WATER FEATURE
7. SEATING PLAZA
8. FLOWER SCULPTURE
9. PARTY LAWN
10. AMPHITHEATRE
11. BARBEQUE COUNTER
12. STEPPED PLANTER WITH FLOWER GARDEN
13. YOGA LAWN
14. OUTDOOR FITNESS ZONE
15. SENIOR FOLK'S DEN
16. REFLEXOLOGY PATH
17. INFINITY EDGE SWIMMING POOL
18. UNDERWATER SEATS
19. SUNKEN PAVILION
20. GRAFFITI WALL
21. KIDS POOL
22. RAIN UMBRELLA
23. FUN POOL WITH BUBBLERS
24. VIEWING DECK
25. MULTI-PURPOSE COURT

### CLUB HOUSE 2 AT PODIUM LEVEL (COMMUNITY CENTER)

1. OPEN SPACE ACCESS FROM CLUB HOUSE
2. LEAVES SCULPTURE
3. SEATING PLAZA
4. WORKING PODS
5. LAWN
6. BONFIRE
7. SCULPTURE
8. TODDLER'S PLAY AREA
9. SQUIRREL SCULPTURE
10. CREATIVE WALL
11. PAR SEATING
12. OUTDOOR GAMES TABLE
13. FEATURE WALL
14. KIDS PLAY AREA
15. SWING PLAZA
16. DEER SCULPTURE
17. STAIRCASE ACCESS TO PODIUM LANDSCAPE
18. -280M WALKING PLAZA

### BUILDING TERRACE

1. MULTI-PURPOSE LAWN
2. OUTDOOR SEATING
3. SERVICE COUNTER
4. STARGAZING AREA

# **FLOOR PLAN**

D - Building

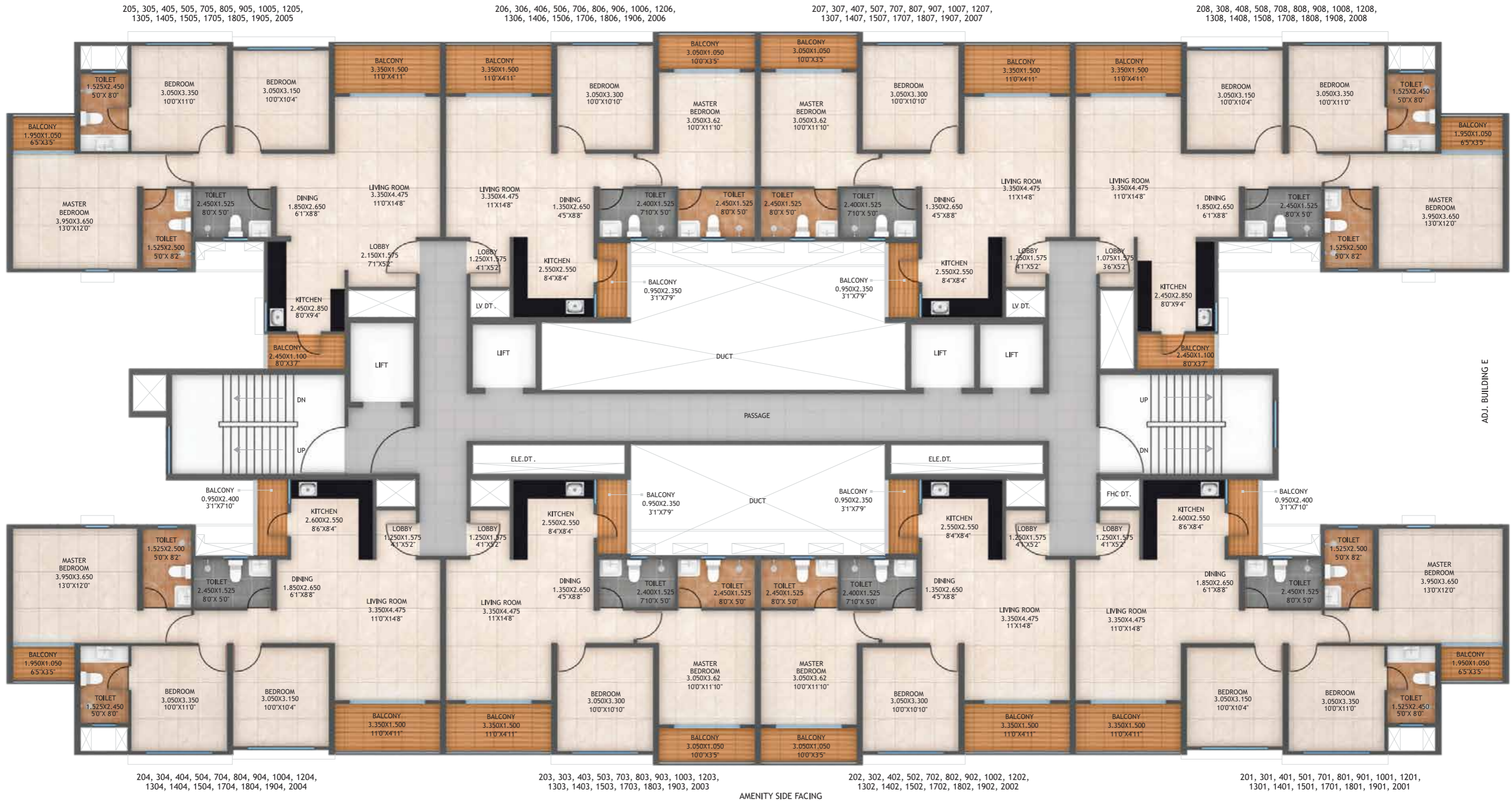


| TYPE         | FLAT NUMBERS | FLAT CARPET AREA (SQ.M.) | FLAT CARPET AREA (SQ.FT.) | BALCONY (SQ.M.) | BALCONY (SQ.FT.) |
|--------------|--------------|--------------------------|---------------------------|-----------------|------------------|
| 2 BHK TYPE-A | 106, 107     | 62.15                    | 668.98                    | 10.46           | 112.59           |
| 3 BHK TYPE-A | 108          | 84.41                    | 908.59                    | 9.76            | 105.06           |
| 3 BHK TYPE-B | 105          | 86.11                    | 926.89                    | 9.76            | 105.06           |

1. All Dimensions Are In Meter Unless Otherwise Specified
2. Dimensions & Areas Additionally Mentioned In Feet Inches & Square Feet Are Only For Customer's Understanding. Kindly Do Not Refer The Same For Any RERA Related References



ROAD SIDE FACING



| TYPE         | FLAT NUMBERS   | FLAT CARPET AREA (SQ.M.) | FLAT CARPET AREA (SQ.FT.) | BALCONY (SQ.M.) | BALCONY (SQ.FT.) |
|--------------|--|--------------------------|---------------------------|-----------------|------------------|
| 2 BHK TYPE-A | 202, 302, 402, 502, 702, 802, 902, 1002, 1202, 1302, 1402, 1502, 1702, 1802, 1902, 2002, 203, 303, 403, 503, 703, 803, 903, 1003, 1203, 1303, 1403, 1503, 1703, 1803, 1903, 2003, 206, 306, 406, 506, 706, 806, 906, 1006, 1206, 1306, 1406, 1506, 1706, 1806, 1906, 2006, 207, 307, 407, 507, 707, 807, 907, 1007, 1207, 1307, 1407, 1507, 1707, 1807, 1907, 2007 | 62.15                    | 668.98                    | 10.46           | 112.59           |
| 3 BHK TYPE-A | 208, 308, 408, 508, 708, 808, 908, 1008, 1208, 1308, 1408, 1508, 1708, 1808, 1908, 2008  | 84.41                    | 908.59                    | 9.76            | 105.06           |
| 3 BHK TYPE-B | 205, 305, 405, 505, 705, 805, 905, 1005, 1205, 1305, 1405, 1505, 1705, 1805, 1905, 2005  | 86.11                    | 926.89                    | 9.76            | 105.06           |
| 3 BHK TYPE-C | 201, 301, 401, 501, 701, 801, 901, 1001, 1201, 1301, 1401, 1501, 1701, 1801, 1901, 2001, 204, 304, 404, 504, 704, 804, 904, 1004, 1204, 1304, 1404, 1504, 1704, 1804, 1904, 2004   | 84.18                    | 906.11                    | 9.35            | 100.64           |

1. All Dimensions Are In Meter Unless Otherwise Specified
2. Dimensions & Areas Additionally Mentioned In Feet Inches & Square Feet Are Only For Customer's Understanding. Kindly Do Not Refer The Same For Any RERA Related References



ROAD SIDE FACING



| TYPE         | FLAT NUMBERS                     | FLAT CARPET AREA (SQ.M.) | FLAT CARPET AREA (SQ.FT.) | BALCONY (SQ.M.) | BALCONY (SQ.FT.) |
|--------------|----------------------------------|--------------------------|---------------------------|-----------------|------------------|
| 2 BHK TYPE-A | 602, 1102, 1602, 603, 1103, 1603 | 62.15                    | 668.98                    | 10.46           | 112.59           |
| 3 BHK TYPE-A | 608, 1108, 1608                  | 84.41                    | 908.59                    | 9.76            | 105.06           |
| 3 BHK TYPE-B | 605, 1105, 1605                  | 86.11                    | 926.89                    | 9.76            | 105.06           |
| 3 BHK TYPE-C | 601, 1101, 1601, 604, 1104, 1604 | 84.18                    | 906.11                    | 9.35            | 100.64           |
| 2.5 BHK      | 606, 1106, 1606                  | 84.66                    | 911.28                    | 13.66           | 147.03           |

1. All Dimensions Are In Meter Unless Otherwise Specified
2. Dimensions & Areas Additionally Mentioned In Feet Inches & Square Feet Are Only For Customer's Understanding. Kindly Do Not Refer The Same For Any RERA Related References



# **FLOOR PLAN**

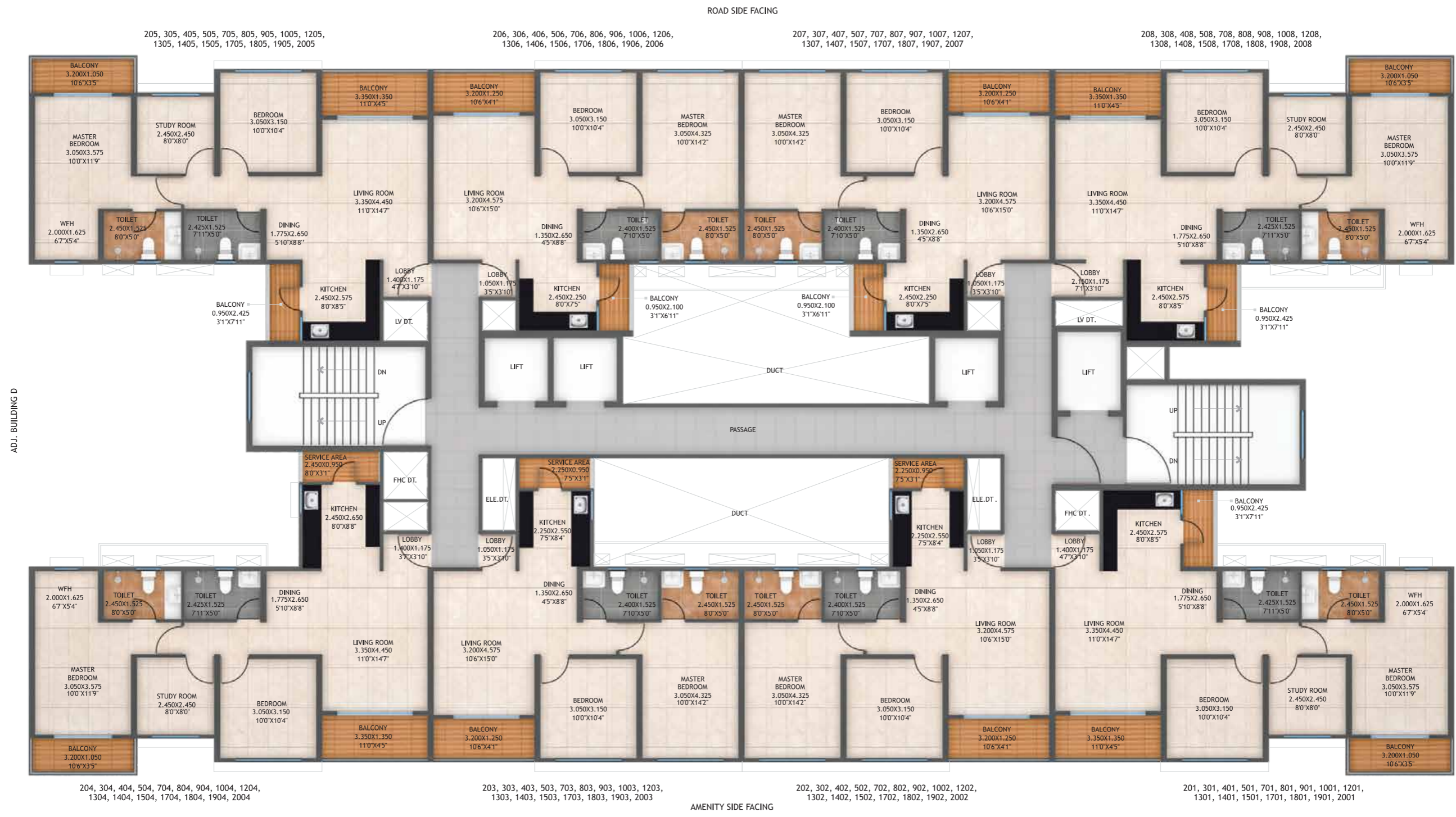
E - Building



| TYPE           | FLAT NUMBERS | FLAT CARPET AREA (SQ.M.) | FLAT CARPET AREA (SQ.FT.) | BALCONY (SQ.M.) | BALCONY (SQ.FT.) |
|----------------|--------------|--------------------------|---------------------------|-----------------|------------------|
| 2 BHK TYPE-C   | 106, 107     | 61.10                    | 657.68                    | 5.99            | 64.48            |
| 2.5 BHK TYPE-D | 105          | 74.45                    | 801.38                    | 10.18           | 109.58           |
| 2.5 BHK TYPE-E | 108          | 75.34                    | 810.96                    | 10.18           | 109.58           |

1. All Dimensions Are In Meter Unless Otherwise Specified
2. Dimensions & Areas Additionally Mentioned In Feet Inches & Square Feet Are Only For Customer's Understanding. Kindly Do Not Refer The Same For Any RERA Related References





| TYPE           | FLAT NUMBERS   | FLAT CARPET AREA (SQ.M.) | FLAT CARPET AREA (SQ.FT.) | BALCONY (SQ.M.) | BALCONY (SQ.FT.) | SERVICE AREA (SQ.M.) | SERVICE AREA (SQ.FT.) |
|----------------|--|--------------------------|---------------------------|-----------------|------------------|----------------------|-----------------------|
| 2 BHK TYPE-C   | 206, 306, 406, 506, 706, 806, 906, 1006, 1206, 1306, 1406, 1506, 1706, 1806, 1906, 2006, 207, 307, 407, 507, 707, 807, 907, 1007, 1207, 1307, 1407, 1507, 1707, 1807, 1907, 2007 | 61.10                    | 657.68                    | 5.99            | 64.48            | -                    | -                     |
| 2 BHK TYPE-D   | 202, 302, 402, 502, 702, 802, 902, 1002, 1202, 1302, 1402, 1502, 1702, 1802, 1902, 2002, 203, 303, 403, 503, 703, 803, 903, 1003, 1203, 1303, 1403, 1503, 1703, 1803, 1903, 2003 | 61.18                    | 658.54                    | 4.00            | 43.06            | 2.13                 | 22.93                 |
| 2.5 BHK TYPE-D | 201, 301, 401, 501, 701, 801, 901, 1001, 1201, 1301, 1401, 1501, 1701, 1801, 1901, 2001, 205, 305, 405, 505, 705, 805, 905, 1005, 1205, 1305, 1405, 1505, 1705, 1805, 1905, 2005 | 74.45                    | 801.38                    | 10.18           | 109.58           | -                    | -                     |
| 2.5 BHK TYPE-E | 208, 308, 408, 508, 708, 808, 908, 1008, 1208, 1308, 1408, 1508, 1708, 1808, 1908, 2008  | 75.34                    | 810.96                    | 10.18           | 109.58           | -                    | -                     |
| 2.5 BHK TYPE-E | 204, 304, 404, 504, 704, 804, 904, 1004, 1204, 1304, 1404, 1504, 1704, 1804, 1904, 2004  | 74.72                    | 804.29                    | 7.88            | 84.82            | 2.32                 | 24.97                 |

1. All Dimensions Are In Meter Unless Otherwise Specified
2. Dimensions & Areas Additionally Mentioned In Feet Inches & Square Feet Are Only For Customer's Understanding. Kindly Do Not Refer The Same For Any RERA Related References





ROAD SIDE FACING



ADJ. BUILDING D

| TYPE           | FLAT NUMBERS                     | FLAT CARPET AREA (SQ.M.) | FLAT CARPET AREA (SQ.FT.) | BALCONY (SQ.M.) | BALCONY (SQ.FT.) | SERVICE AREA (SQ.M.) | SERVICE AREA (SQ.FT.) |
|----------------|----------------------------------|--------------------------|---------------------------|-----------------|------------------|----------------------|-----------------------|
| 2 BHK TYPE-D   | 602, 1102, 1602, 603, 1103, 1603 | 61.18                    | 658.54                    | 4.00            | 43.06            | 2.13                 | 22.93                 |
| 2.5 BHK TYPE-D | 601, 1101, 1601, 605, 1105, 1605 | 74.45                    | 801.38                    | 10.18           | 109.58           | -                    | -                     |
| 2.5 BHK TYPE-E | 608, 1108, 1608                  | 75.34                    | 810.96                    | 10.18           | 109.58           | -                    | -                     |
| 2.5 BHK TYPE-F | 604, 1104, 1604                  | 74.72                    | 804.29                    | 7.88            | 84.82            | 2.32                 | 24.97                 |
| 3 BHK TYPE-F   | 607, 1107, 1607                  | 85.74                    | 922.91                    | 5.99            | 64.48            | -                    | -                     |

1. All Dimensions Are In Meter Unless Otherwise Specified
2. Dimensions & Areas Additionally Mentioned In Feet Inches & Square Feet Are Only For Customer's Understanding. Kindly Do Not Refer The Same For Any RERA Related References



# **UNIT PLAN**

D - Building



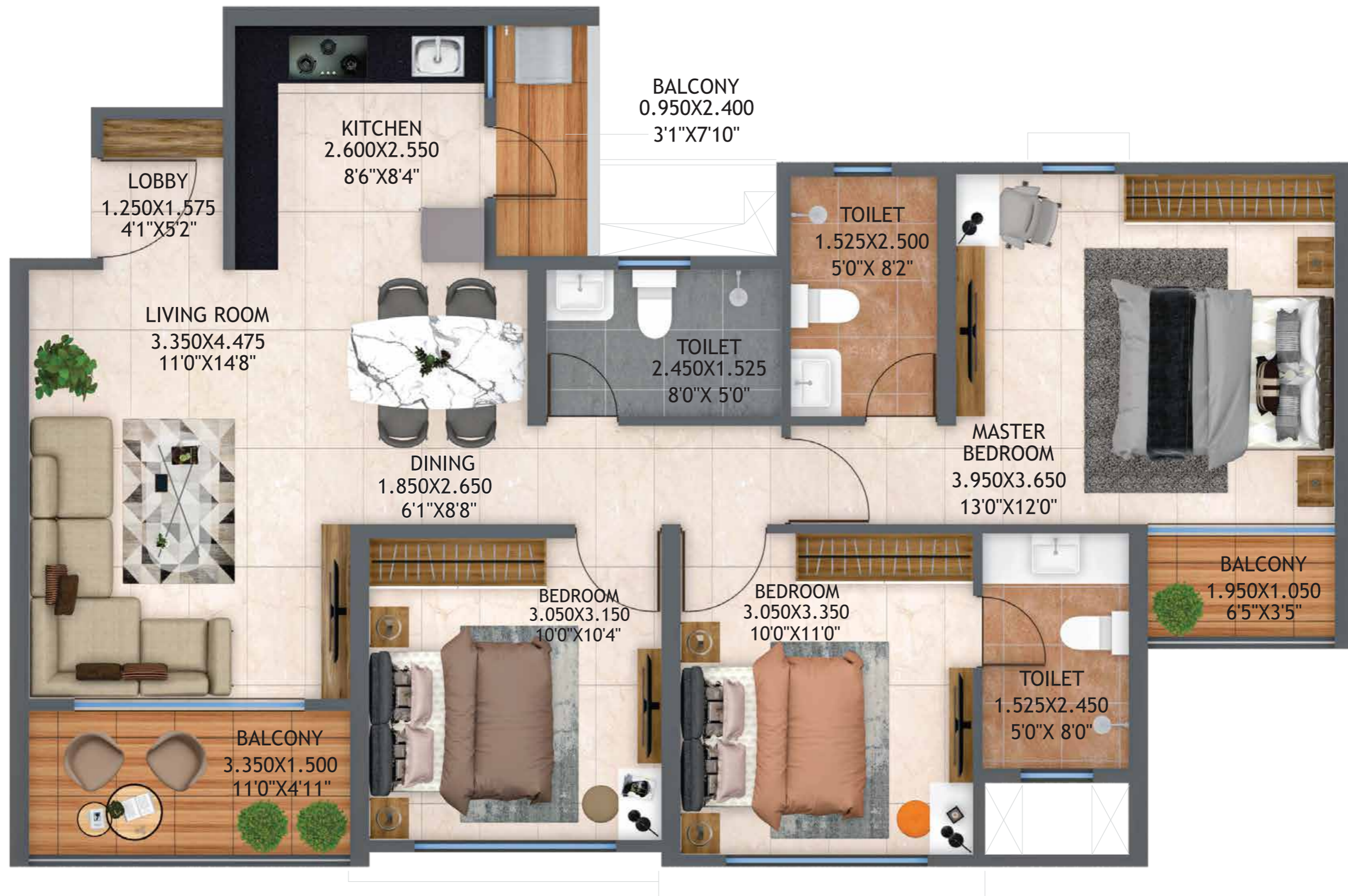
| TYPE        | FLAT NUMBERS   | FLAT CARPET AREA (SQ.M.) | FLAT CARPET AREA (SQ.FT.) | BALCONY (SQ.M.) | BALCONY (SQ.FT.) |
|-------------|----------------|--------------------------|---------------------------|-----------------|------------------|
| 2BHK TYPE-A | 02, 03, 06, 07 | 62.15                    | 668.98                    | 10.46           | 112.59           |

1. All Dimensions Are In Meter Unless Otherwise Specified
2. Dimensions & Areas Additionally Mentioned In Feet Inches & Square Feet Are Only For Customer's Understanding. Kindly Do Not Refer The Same For Any RERA Related References



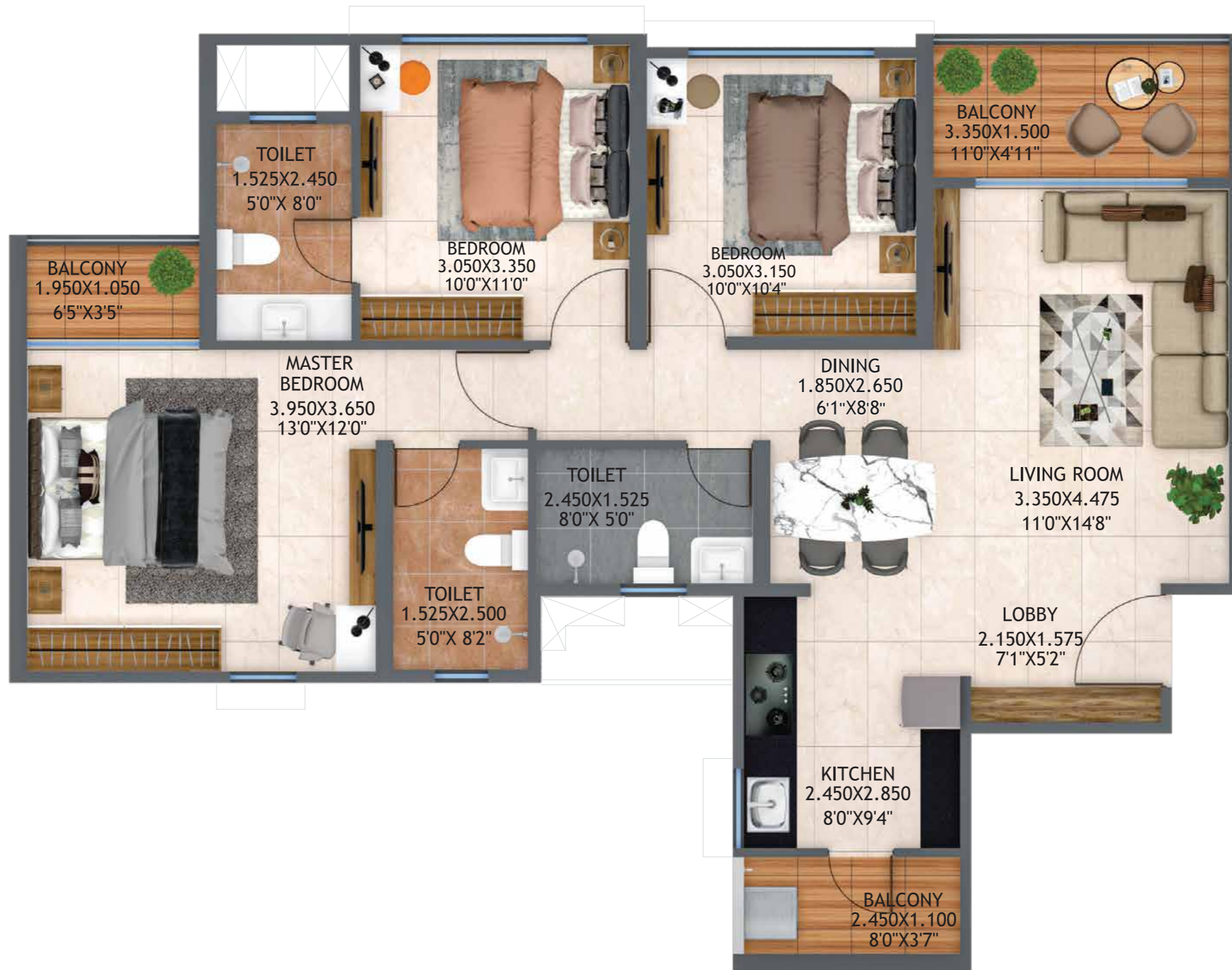
| TYPE    | FLAT NUMBERS    | FLAT CARPET AREA (SQ.M.) | FLAT CARPET AREA (SQ.FT.) | BALCONY (SQ.M.) | BALCONY (SQ.FT.) |
|---------|-----------------|--------------------------|---------------------------|-----------------|------------------|
| 2.5 BHK | 606, 1106, 1606 | 84.66                    | 911.28                    | 13.66           | 147.04           |

1. All Dimensions Are In Meter Unless Otherwise Specified  
 2. Dimensions & Areas Additionally Mentioned In Feet Inches & Square Feet Are Only For Customer's Understanding. Kindly Do Not Refer The Same For Any RERA Related References



| TYPE         | FLAT NUMBERS | FLAT CARPET AREA (SQ.M.) | FLAT CARPET AREA (SQ.FT.) | BALCONY (SQ.M.) | BALCONY (SQ.FT.) |
|--------------|--------------|--------------------------|---------------------------|-----------------|------------------|
| 3 BHK TYPE-C | 01, 04       | 84.18                    | 906.11                    | 9.35            | 100.64           |

1. All Dimensions Are In Meter Unless Otherwise Specified
2. Dimensions & Areas Additionally Mentioned In Feet Inches & Square Feet Are Only For Customer's Understanding. Kindly Do Not Refer The Same For Any RERA Related References



| TYPE         | FLAT NUMBERS | FLAT CARPET AREA (SQ.M.) | FLAT CARPET AREA (SQ.FT.) | BALCONY (SQ.M.) | BALCONY (SQ.FT.) |
|--------------|--------------|--------------------------|---------------------------|-----------------|------------------|
| 3 BHK TYPE-B | 05           | 86.11                    | 926.89                    | 9.76            | 105.06           |

1. All Dimensions Are In Meter Unless Otherwise Specified
2. Dimensions & Areas Additionally Mentioned In Feet Inches & Square Feet Are Only For Customer's Understanding. Kindly Do Not Refer The Same For Any RERA Related References



| TYPE        | FLAT NUMBERS | FLAT CARPET AREA (SQ.M.) | FLAT CARPET AREA (SQ.FT.) | BALCONY (SQ.M.) | BALCONY (SQ.FT.) |
|-------------|--------------|--------------------------|---------------------------|-----------------|------------------|
| 3BHK TYPE-A | 08           | 84.41                    | 908.59                    | 9.76            | 105.06           |

1. All Dimensions Are In Meter Unless Otherwise Specified
2. Dimensions & Areas Additionally Mentioned In Feet Inches & Square Feet Are Only For Customer's Understanding. Kindly Do Not Refer The Same For Any RERA Related References

# **UNIT PLAN**

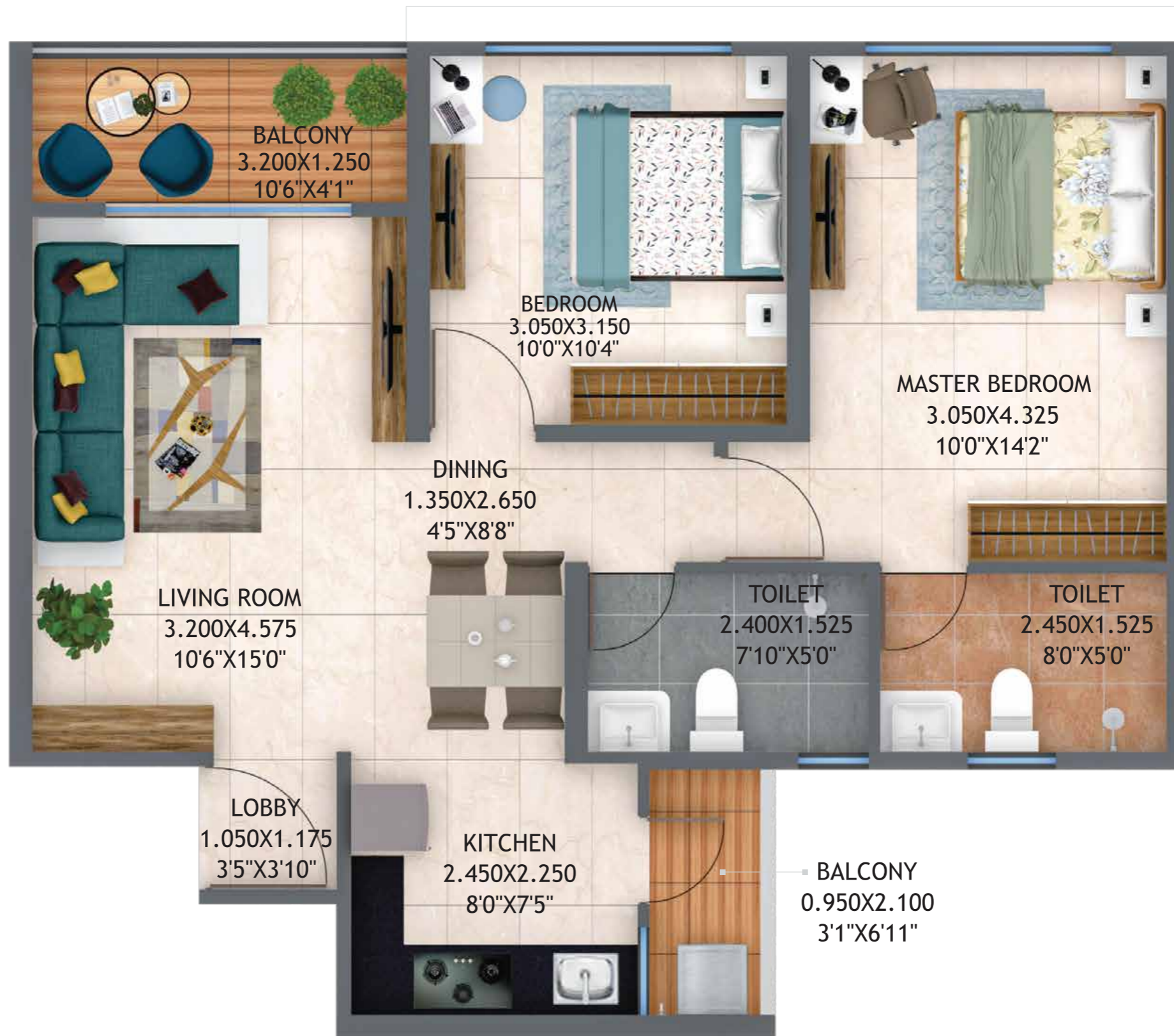
E - Building





| TYPE  | FLAT NUMBERS | FLAT CARPET AREA (SQ.M.) | FLAT CARPET AREA (SQ.FT.) | BALCONY (SQ.M.) | BALCONY (SQ.FT.) | SERVICE AREA (SQ.M.) | SERVICE AREA (SQ.FT.) |
|-------|--------------|--------------------------|---------------------------|-----------------|------------------|----------------------|-----------------------|
| 2 BHK | 02, 03       | 61.18                    | 658.54                    | 4.00            | 43.05            | 2.13                 | 22.92                 |

1. All Dimensions Are In Meter Unless Otherwise Specified
2. Dimensions & Areas Additionally Mentioned In Feet Inches & Square Feet Are Only For Customer's Understanding. Kindly Do Not Refer The Same For Any RERA Related References



| TYPE  | FLAT NUMBERS | FLAT CARPET AREA (SQ.M.) | FLAT CARPET AREA (SQ.FT.) | BALCONY (SQ.M.) | BALCONY (SQ.FT.) |
|-------|--------------|--------------------------|---------------------------|-----------------|------------------|
| 2 BHK | 06, 07       | 61.10                    | 657.68                    | 5.99            | 64.48            |

1. All Dimensions Are In Meter Unless Otherwise Specified
2. Dimensions & Areas Additionally Mentioned In Feet Inches & Square Feet Are Only For Customer's Understanding. Kindly Do Not Refer The Same For Any RERA Related References



| TYPE    | FLAT NUMBERS | FLAT CARPET AREA (SQ.M.) | FLAT CARPET AREA (SQ.FT.) | BALCONY (SQ.M.) | BALCONY (SQ.FT.) |
|---------|--------------|--------------------------|---------------------------|-----------------|------------------|
| 2.5 BHK | 01, 05       | 74.45                    | 801.38                    | 10.18           | 109.58           |

1. All Dimensions Are In Meter Unless Otherwise Specified
2. Dimensions & Areas Additionally Mentioned In Feet Inches & Square Feet Are Only For Customer's Understanding. Kindly Do Not Refer The Same For Any RERA Related References



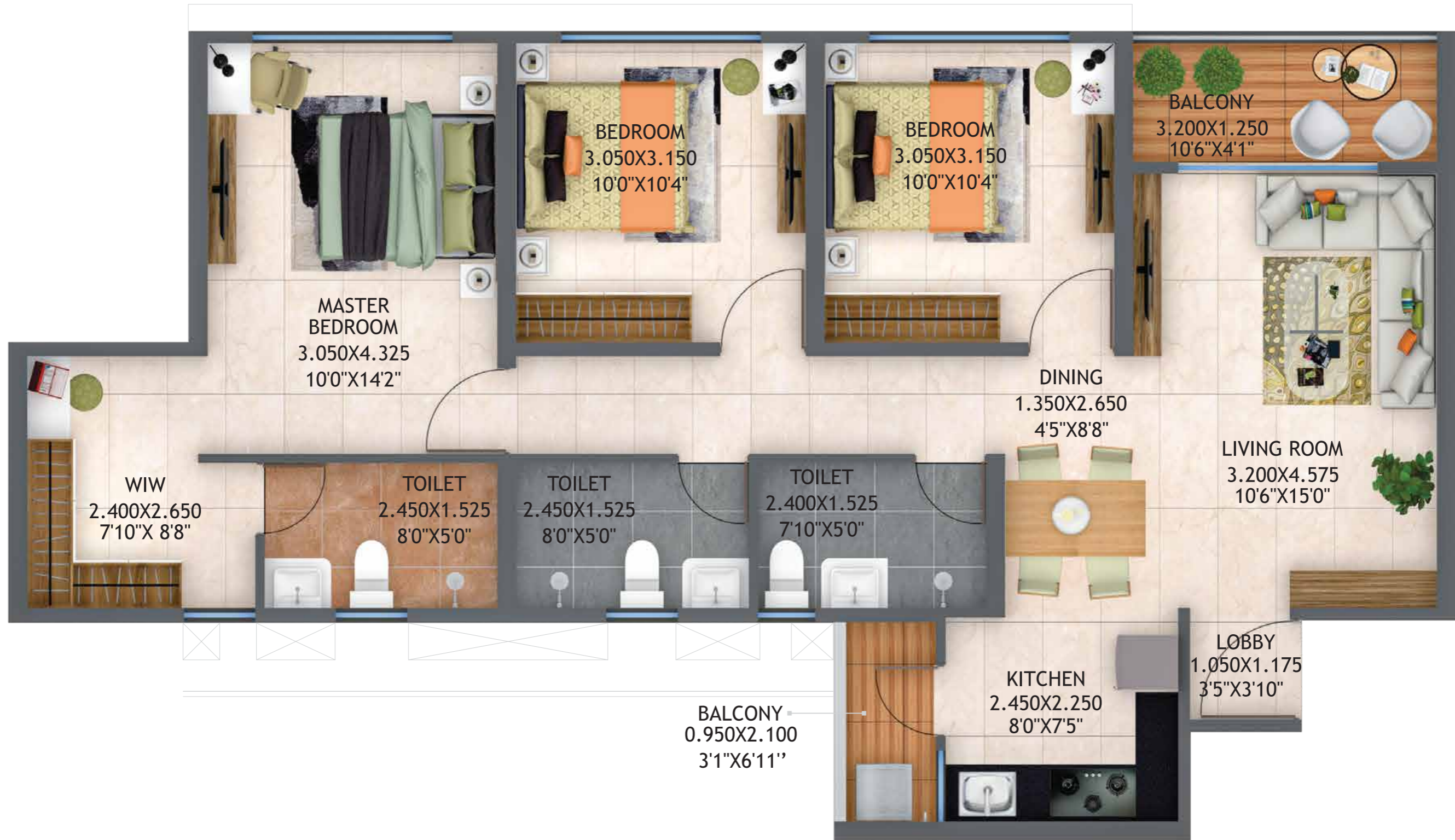
| TYPE           | FLAT NUMBERS | FLAT CARPET AREA (SQ.M.) | FLAT CARPET AREA (SQ.FT.) | BALCONY (SQ.M.) | BALCONY (SQ.FT.) | SERVICE AREA (SQ.M.) | SERVICE AREA (SQ.FT.) |
|----------------|--------------|--------------------------|---------------------------|-----------------|------------------|----------------------|-----------------------|
| 2.5 BHK TYPE-F | 04           | 74.72                    | 804.29                    | 7.88            | 84.82            | 2.32                 | 24.97                 |

1. All Dimensions Are In Meter Unless Otherwise Specified
2. Dimensions & Areas Additionally Mentioned In Feet Inches & Square Feet Are Only For Customer's Understanding. Kindly Do Not Refer The Same For Any RERA Related References



| TYPE    | FLAT NUMBERS | FLAT CARPET AREA (SQ.M.) | FLAT CARPET AREA (SQ.FT.) | BALCONY (SQ.M.) | BALCONY (SQ.FT.) |
|---------|--------------|--------------------------|---------------------------|-----------------|------------------|
| 2.5 BHK | 08           | 75.34                    | 810.96                    | 10.18           | 109.58           |

1. All Dimensions Are In Meter Unless Otherwise Specified  
 2. Dimensions & Areas Additionally Mentioned In Feet Inches & Square Feet Are Only For Customer's Understanding. Kindly Do Not Refer The Same For Any RERA Related References



| TYPE | FLAT NUMBERS    | FLAT CARPET AREA (SQ.M.) | FLAT CARPET AREA (SQ.FT.) | BALCONY (SQ.M.) | BALCONY (SQ.FT.) |
|------|-----------------|--------------------------|---------------------------|-----------------|------------------|
| 3BHK | 607, 1107, 1607 | 85.74                    | 922.91                    | 5.99            | 64.48            |

1. All Dimensions Are In Meter Unless Otherwise Specified
2. Dimensions & Areas Additionally Mentioned In Feet Inches & Square Feet Are Only For Customer's Understanding. Kindly Do Not Refer The Same For Any RERA Related References

# SPECIFICATIONS

## FLOORING AND TILING

- MARBLE FINISH VITRIFIED FLOORING TILES (1200X600MM) IN LIVING ROOM, KITCHEN AND BEDROOM
- ANTISKID CERAMIC WOODEN FINISH FLOORING TILE (600X600MM) IN BALCONY
- ANTISKID FLOORING (600 X 600 MM) IN TOILET

## WASHROOM

- DESIGNER CERAMIC DADO TILES UP TO LINTEL (600X600 MM)
- COUNTER TOP WASH BASIN WITH VITRIFIED PLATFORM
- JAQUAR OR EQUIVALENT MAKE CP FITTING
- JAQUAR OR EQUIVALENT MAKE SANITARYWARE

## KITCHEN

- GRANITE TOP KITCHEN PLATFORM ON BOTH SIDES/ L-SHAPED WITH STAINLESS STEEL SINK FOR MAIN PLATFORM
- DESIGNER CERAMIC DADO TILE 2' ABOVE COUNTER (300X600 MM)
- EXHAUST FAN
- JAQUAR OR EQUIVALENT CP FITTING

## BALCONY

- SS +GLASS RAILINGS FOR BALCONY

## DOORS AND WINDOWS

- LAMINATED MAIN DOOR IN LIVING ROOM
- GRANITE WINDOW SILL IN LIVING ROOM, KITCHEN AND BEDROOM
- POWDER COATED ALUMINIUM SLIDING DOOR WITH MOSQUITO NET IN BALCONY AND BEDROOM
- LAMINATED DOOR SHUTTER AND WPC FRAME IN TOILET
- ALUMINIUM OPENABLE WINDOW WITH EXHAUST FAN IN TOILET
- VITRIFIED WINDOW SILL IN TOILET
- POWDER COATED ALUMINIUM SLIDING WINDOW WITH MOSQUITO NET IN KITCHEN

## PROVISIONS

- PROVISION OF ELECTRICAL POINTS AND SLEEVES FOR AC IN LIVING ROOM AND BEDROOM
- PROVISION FOR WATER PURIFIER IN KITCHEN
- PROVISION FOR GAS PIPELINE\* IN KITCHEN

## SECURITY SYSTEMS

- EARTHQUAKE RESISTANT STRUCTURE CONFIRMING TO IS CODE
- DIGITAL LOCK FOR MAIN DOOR
- STAND ALONE VIDEO DOOR PHONE IN EACH FLAT

## ELECTRICALS

- TV POINT IN LIVING ROOM
- BRANDED MODULAR SWITCHES IN ENTIRE APARTMENT
- ELEVATORS WITH GENERATOR BACK-UP FOR EACH BUILDING

## PAINT

- TEXTURE PAINT FOR EXTERNAL WALL
- GYPSUM-FINISHED WALLS WITH SEMI ACRYLIC PAINT

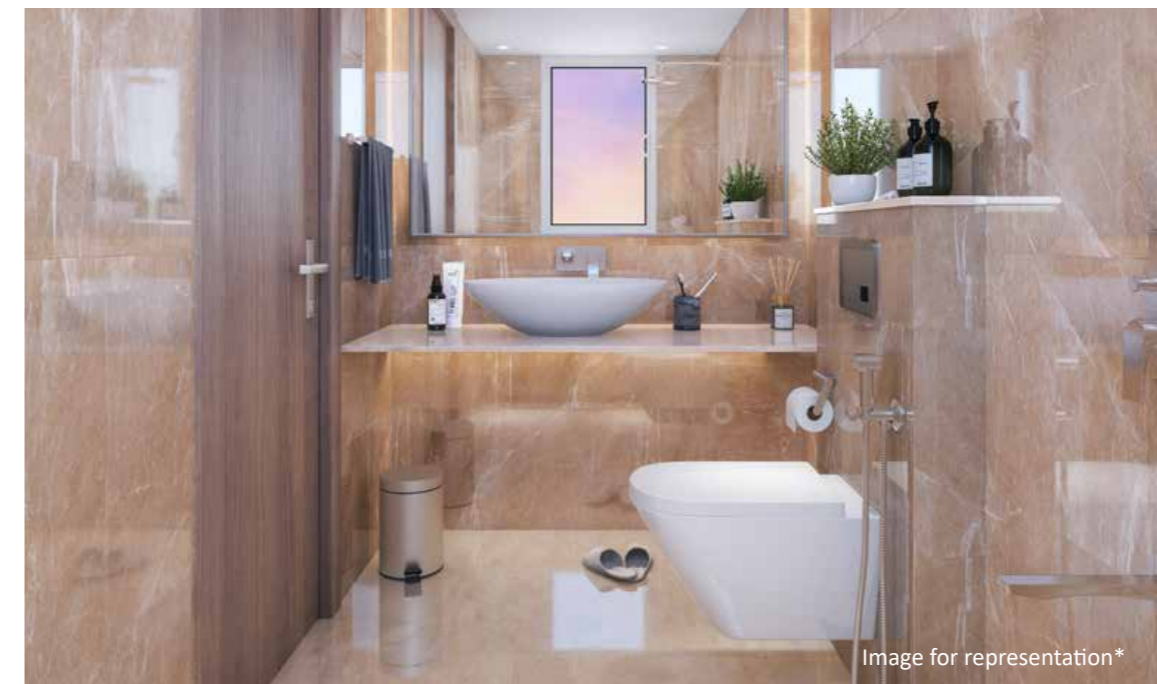


Image for representation\*


\*Services to be provided by 3rd party vendor

Life  
REPUBLIC  
BY KOLTE-PATIL




Site Office: Life Republic, Survey No. 74, Marunji, Hinjawadi-Marunji-Kasarsai Road,  
Taluka Mulshi, Pune 411057, Maharashtra, INDIA.

Call for more information: 1800-266-6654 | [www.koltepatil.com](http://www.koltepatil.com)

 This project has been registered under MAHA RERA registration number P52100051765 as Life Republic/Sector R22/22nd Avenue - Atmos/Phase - 1 and is available on the website [https://maharera.mahaonline.gov.in/under registered project](https://maharera.mahaonline.gov.in/under%20registered%20project). T&C Apply\*

Disclaimer: All art renderings, illustrations, photographs and pictures contained in this brochure are an artist's impression only and the same should not be considered as the final view of the final project. Standard kitchen platform along with sink will be provided. Rest of the furniture and kitchen appliances are only for representation purpose. Since the project is under evaluation, there is a possibility that there may be certain changes in the project as presented in this advertisement. Every interested purchaser should take note of this express representation. Kindly visit our website for the complete disclaimer. For more information on future developments please refer to agreement for sale.

 MAHA RERA  
P52100051765

