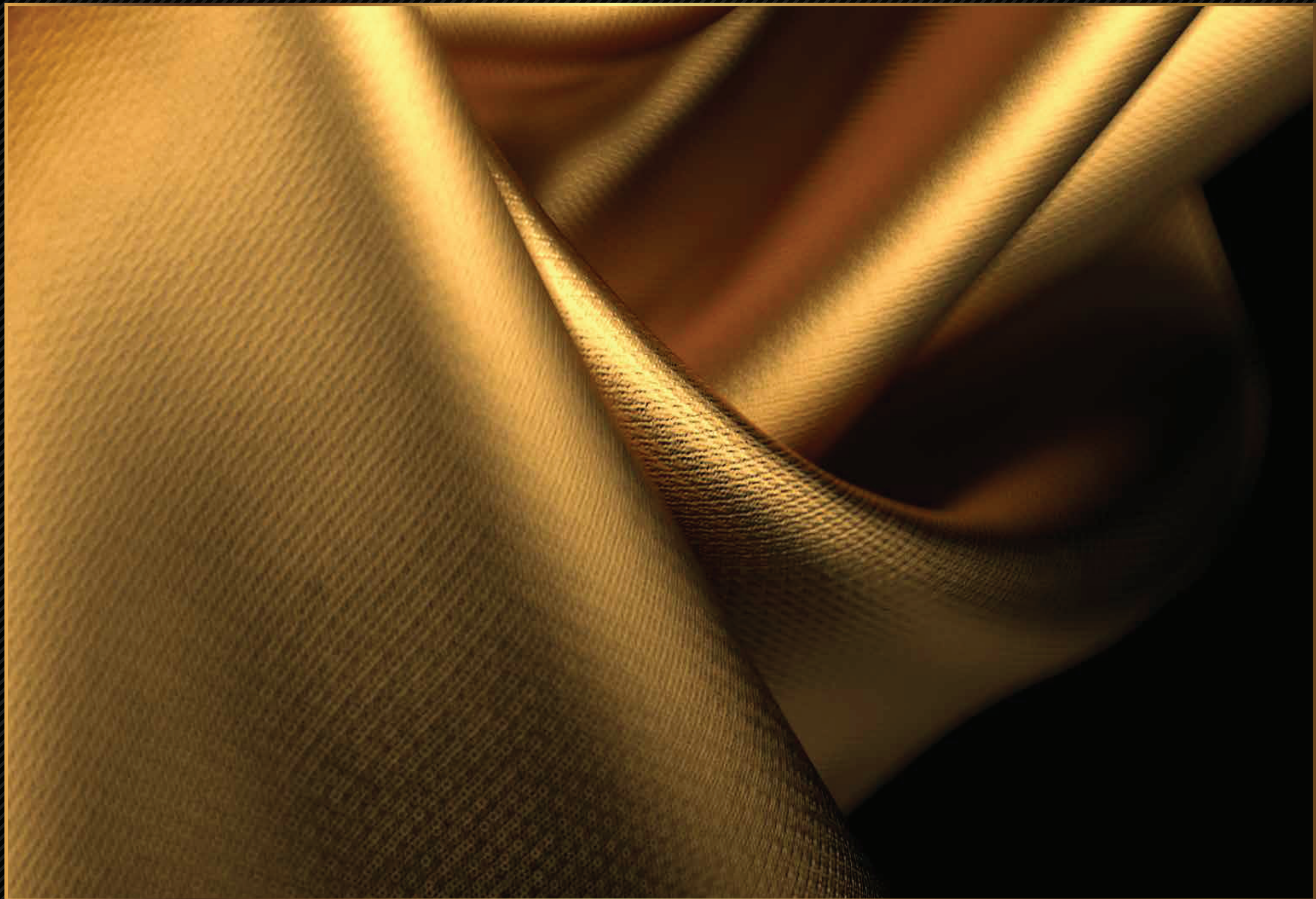




BIG ENOUGH TO HOLD YOUR FRIENDS, SMALL FOR YOUR DREAMS.









---

Welcome to SAS Crown – The Jewel of Hyderabad.  
A magnificent piece of contemporary architecture laced in luxury,  
for people with lofty desires to be the best.  
Get ready to own a dominion and rule your world.  
Crown your desires with luxury a notch higher, with us.

---

















# SAS CROWN

---

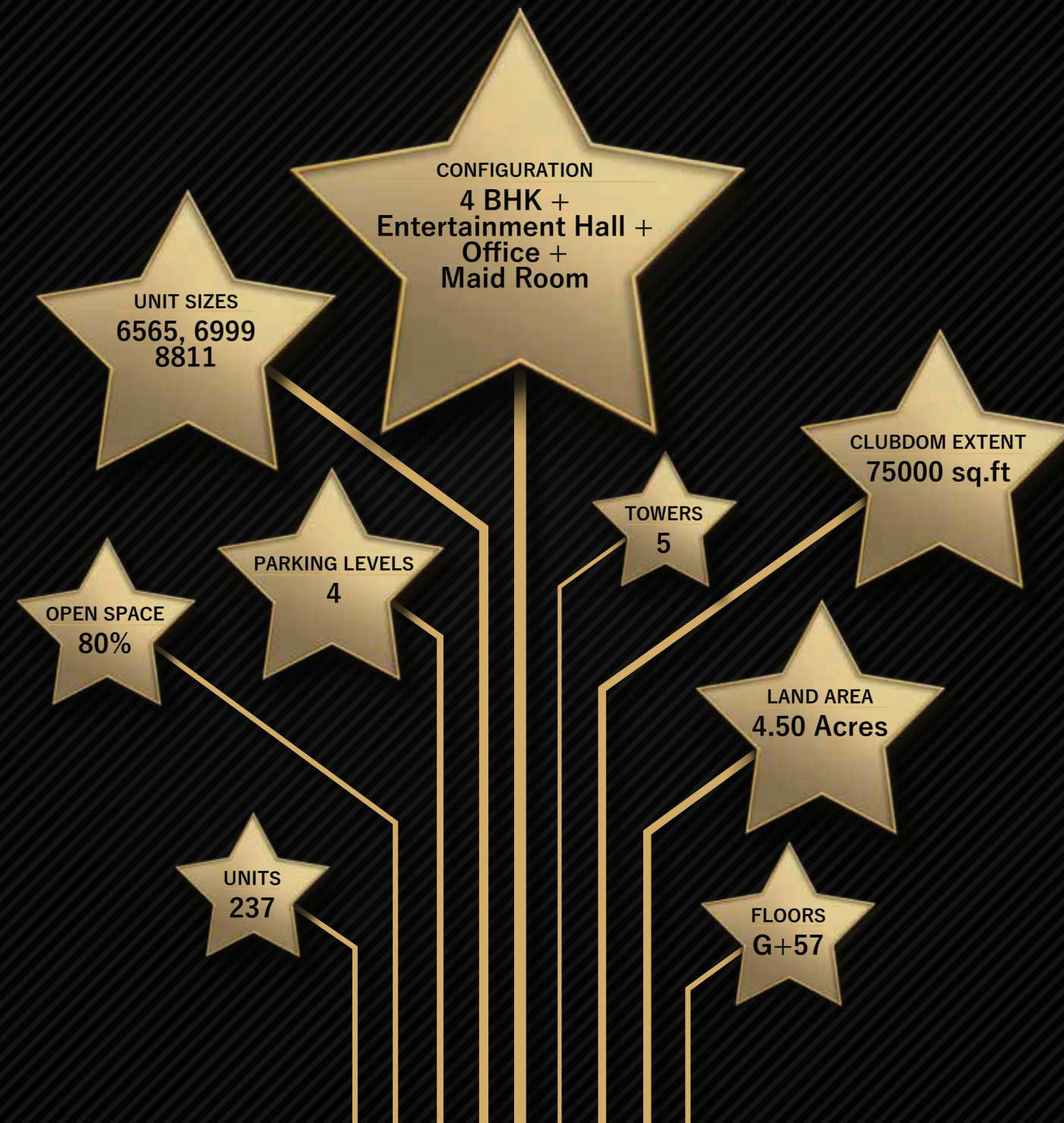
THE JEWEL OF HYDERABAD

AN EPITOME OF ULTRA LUXURY RESIDENCES BEFITTING YOUR LOFTY DESIRES TO REIGN AND LIVE LIFE KING SIZE.











▲  
Luxury

a Notch Higher ★ IN AMENITIES



### OF LIMITED EDITION

5 Towers comprising of just 237 residences reaching the sky.

Limited Edition to be a crowning star.

Aim for the Crown.



### A HAVEN ABOVE

This private sanctuary with skyscape views is a finite series of handful units above 200 meters in entire south India and a mere 25 duplex above the 200 meter mark.

Definitely, a defined place in the sky



### STANDING TALL

The Tallest residential skyscraper in South India.

Lofty as your desires, this slender 57 levels high rise, stands 235 meters tall and is sure to raise eyebrows.



### OFFICE WITH A VIEW

Eagle's eye view of the financial district adds edge to your working space as offices gain majestic entity with designed facades

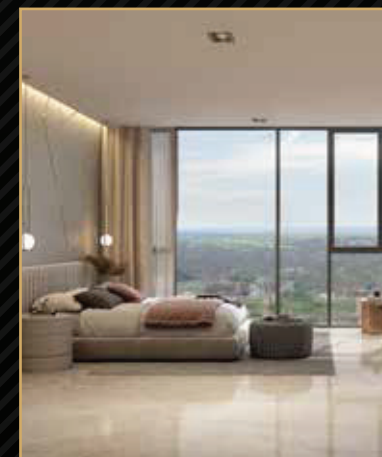
Register the pride of address.



### IN LOOKING UP

Double height lobbies and 12 feet high ceiling dare you to look up even when you are not gazing the skies.

Keep looking up!



### WITH STAR CLASS HOSPITALITY

Treat your guest to the vast skyline view of jewel called Hyderabad with glass facades in the guestrooms.

Extend hospitality with luxurious views.













## WITH PRIVATE ACCESS

Private life lobbies ensure direct access privacy for comfort and restrictions for safety.

Enter your world in ease.



## IN SPACE & NOTICEABILITY

Spread across 4.5 acres of Golden Mile Layout, the sheer expanse of the project spells luxury like none other.

Set amidst the highly connected financial district with an entry and exit gate to ring road, Kokapet, Hyderabad. The location is of supreme advantage.

Gain from this double edged luxury here.



## IN BLUE PRINT

Designed to deliver an inherent success with comfort, its 100% vastu complaint and ensures freshening nature to flow through.

Truly you can enjoy the lightness of the air.



## WITH LAVISH SIZE

Ultra Super Luxury Residential Kingdoms of King-Sizes; this prolific space is bountifully endowed with four car parking slots.



## IN LINEAGE

Rooted in a legacy of milestone markers, it is developed by SAS Infra promoter of iTowers - the tallest business tower in Hyderabad.

Pure luxury is a habit here: both encompassing and engulfing, growing with every new development.



## CLUBHOUSE IS CLUBDOM

A redefining experience of reigning over Clubdom – a lavish colossal clubhouse of over 75000 sq.ft. fully loaded arena for Socializing to experience the next level here.





Sports Arena

A sporting infrastructure collective to hone your skills and  
build both physical and mental endurance  
A perfect way to workout for defining lifestyle





Jogging track

Jog your worries away. Feel the wind on your face or just Pump up the adrenaline... flex your thoughts or blow the stress away.. Hit the tracks and find Jogging joy anytime and every time









Office Space at your Kingdom

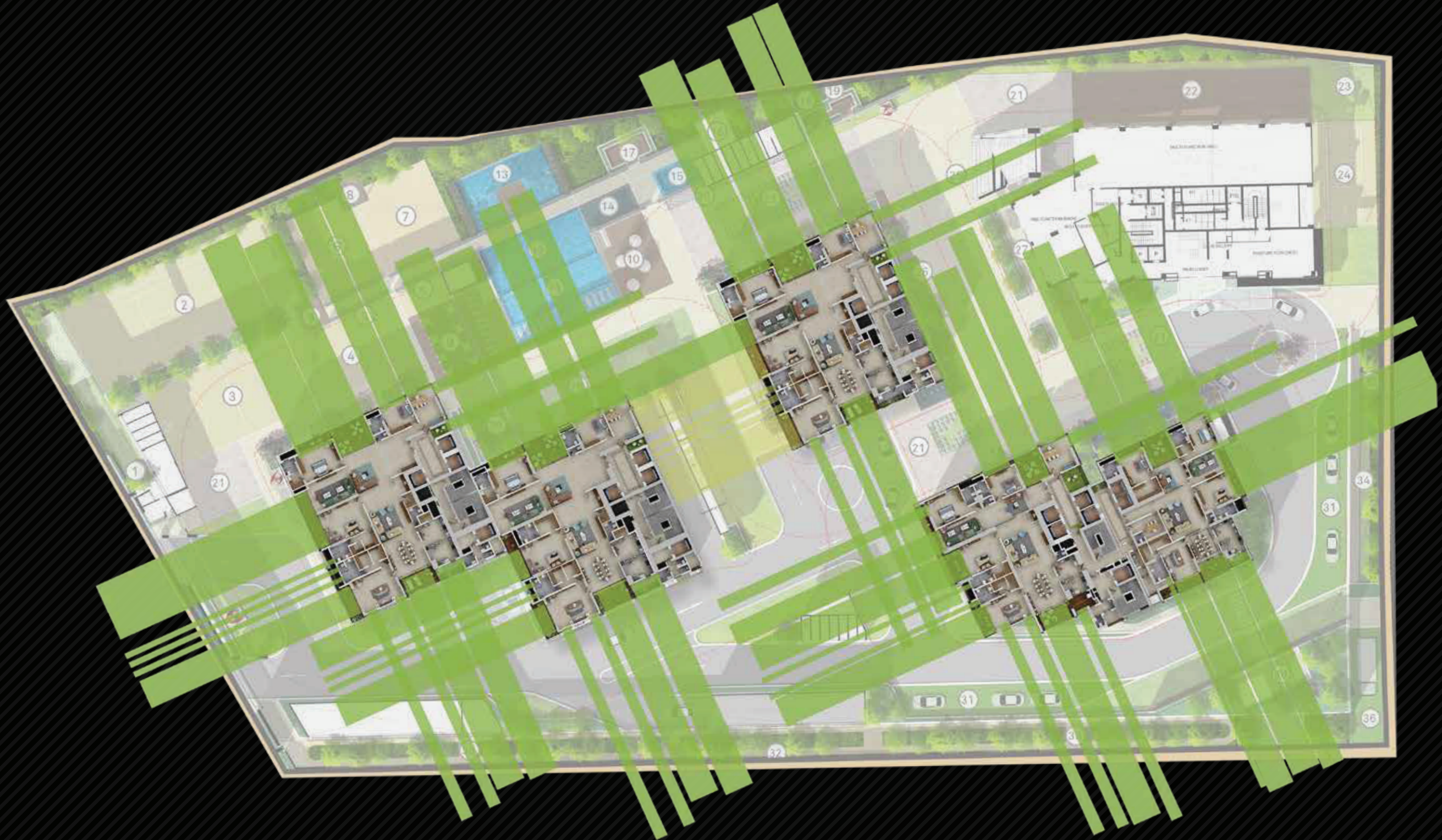




Deck



## UNOBSTRUCTED VIEWS





a Notch Higher  
▲  
Luxury



WITH DUAL FLOORED

Get overwhelmed twice over.  
The astounding duplex with  
its breathtaking views is  
a ideal blend of designed  
interiorscapes and awe inspiring  
landscape views.

Strictly, Designed to floor you.





Duplex





Clubdom Extent 75,000 sq.ft













Theatre at clubhouse



Infinity Swimming Pool at Duplex





Banquet Hall





## HOME AUTOMATION

- ★ Basic Automation with provision for upgradation.

## BIOMETRIC LOCK

- ★ Biometric lock for main door. (YALE / Hafele / equivalent make)

## TELECOM & INTERCOM

- ★ Telephone points in all rooms with system of IPBX & Intercom facility connecting security, concierge, housekeeping and reception.

## STRUCTURE FOR Tv

- ★ Provision for cable connection in all bedrooms, living room & servant room.

## INTERNET

- ★ 100% Wi-Fi internet within the community.

## VIDEO DOOR PHONE

- ★ IP based video door phone at main door with Session Initiation Protocol. (SIP Integration)

## LIFTS

- ★ Premium Hi-speed Passenger lift 3 nos. in each block of Mitsubishi / Toshiba / equivalent make.
- ★ Service lift 1 no. in each block.

## RAILING

- ★ Balustrade system of 4 ft. height along with 13.5 mm clear toughened glass, which increases proportionately as the floor/height increases duly mounted on aluminium frame.

## WTP & STP

- ★ Fully treated Bore water through an exclusive water softening and purification plant of reputed make.
- ★ A sewage treatment plant of adequate capacity as per norms will be provided inside the project. Treated sewage water will be used for flushing and landscaping.



## CAR WASH FACILITY

- ★ Provision for car wash facility in each cellar parking area.

## GENERATOR

- ★ 100% D.G backup with dual meter for each flat.

## CAR PARKING

- ★ Ample Car Parking space spread across 4 levels.
- ★ Visitor's car parking as per norms.

## LPG

- ★ Reticulated piped gas system to individual unit monitored with gas meter.

## AIR CONDITIONING

- ★ VRV or VRF Ducting system of Mitsubishi / Toshiba or equivalent make.

## WASTE MANAGEMENT

- ★ Garbage collecting facility will be provided for every floor level and centrally collected for better disposal. Separate bins to collect dry waste, e-waste & wet waste will be provided at main garbage collecting point.

## PARKING MANAGEMENT

- ★ Entire parking is well designed to suit the number of car parks with parking signage's and equipment's at strategic locations for the ease of driving.

## FACILITIES FOR PHYSICALLY CHALLENGED

- ★ Access and non-slippery ramps at all entrances shall be provided for physically challenged, appropriately designed preferred car park, uniformity in floor level and visual warning signage's.

## CCTV

- ★ 100% IP based CC cameras protection & security room monitoring for all areas from entry till main doors of all units & back till exits.

## SECURITY

- ★ Sophisticated round-the-clock security system.





- ★ Video phone facility at main door.
- ★ Intercom facility.
- ★ Solar power fencing around the compound.
- ★ Identity cards for servants.
- ★ Boom Barriers at entrance.
- ★ Panic button and intercom is provided in the lift that is connected to security room.

#### BMS FIRE & SAFETY

- ★ Fire system will be provided inside the flat, common areas and cellars with fire hydrant system, fire safety equipment & water sprinkler system as per fire safety norms.

#### LANDSCAPING

- ★ Landscaping in the setback areas wherever feasible and in tot lot areas with aesthetically designed landscape.

#### WATER BODIES

- ★ Water bodies, fountains, cascades in setbacks & common areas as per design.

#### WATER

- ★ Pneumatic pumps will be used for supply of fresh water, Manjeera water & treated water to individual flats. Each unit fitted with separate water meter.

#### RAINWATER HARVESTING

- ★ Rainwater harvesting through recharge wells onsite to improve ground water level.

#### EXTERNAL LIGHTING

- ★ LED light posts with lamp fittings at setback and landscaping areas and lights in staircase & corridor areas.

#### BOOM BARRIERS

- ★ Boom barriers at entry & exit for vehicular movement with IR card based operation.



#### DRIVEWAY

- ★ V.D.F flooring.

#### COMPOUND WALL

- ★ Compound wall shall be constructed all around the plot with solar fencing.

#### OTHER SPECIAL FEATURES

- ★ 100% Vaastu compliant
- ★ Floor to floor height of 12 feet
- ★ No common walls
- ★ Anti-termite treatment for all flats.









Bed Room













Living Dining area at your kingdom

















**SAS CROWN**  
THE JEWEL OF HYDERABAD

## FLOOR PLAN - TOWER 2 SIMPLEX 17th & BELOW LEVEL

8811 sq. ft. | East Facing



**SAS INFRA**  
WE BUILD TRUST

[www.sasinfra.com](http://www.sasinfra.com)





## FLOOR PLAN - TOWER 2 SIMPLEX 18th & ABOVE LEVEL

8811 sq. ft. | East Facing



[www.sasinfra.com](http://www.sasinfra.com)





**SAS CROWN**  
THE JEWEL OF HYDERABAD

## FLOOR PLAN - TOWER 4 SIMPLEX 17th & BELOW LEVEL

6565 sq. ft. | East Facing



**SAS INFRA**  
WE BUILD TRUST

[www.sasinfra.com](http://www.sasinfra.com)





## FLOOR PLAN - TOWER 4 SIMPLEX 18th & ABOVE LEVEL

6565 sq. ft. | East Facing



[www.sasinfra.com](http://www.sasinfra.com)







SAS  
CROWN  
THE JEWEL OF HYDERABAD

FLOOR PLAN - TOWER 5  
SIMPLEX  
18th & ABOVE LEVEL

6999 sq. ft. | West Facing



[www.sasinfra.com](http://www.sasinfra.com)







CLUB HOUSE  
GROUND LEVEL



  
**SAS  
CROWN**  
 THE JEWEL OF HYDERABAD





CLUB HOUSE - LEVEL 1



  
**SAS  
CROWN**  
 THE JEWEL OF HYDERABAD





CLUB HOUSE - LEVEL 2



  
**SAS CROWN**  
 THE JEWEL OF HYDERABAD





CLUB HOUSE - LEVEL 3







CLUB HOUSE - LEVEL 4







CLUB HOUSE - LEVEL 5







SAS INFRA, #504, 5th Floor, Modern Profound Tech Park, Opposite Ramalayam Temple, Kondapur, Hyderabad - 500 084.  
p: 040 4624 5500 | m: +91 97186 62299 | e: info@sasinfra.com | www.sasinfra.com