



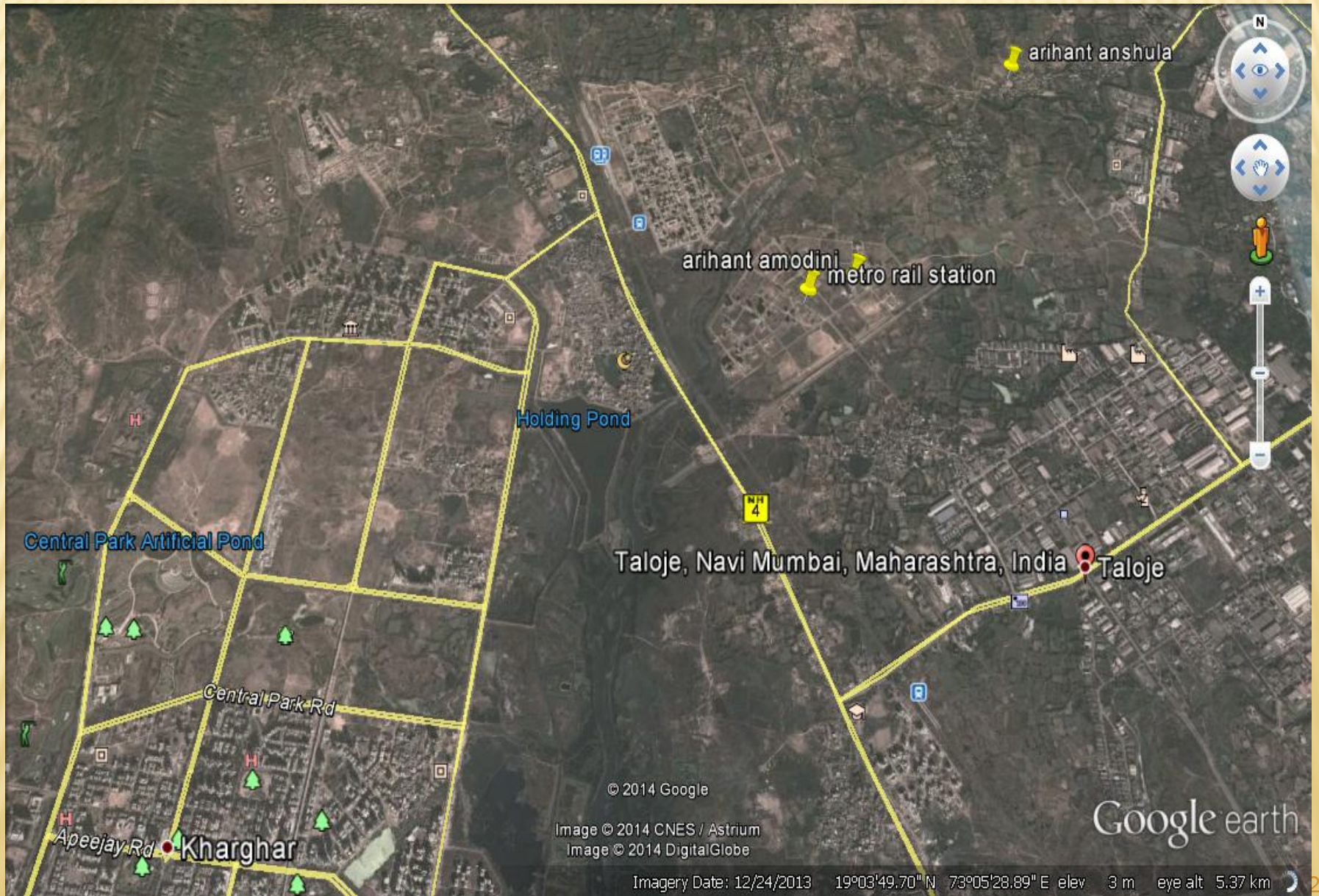
ARIHANT ANSHULA

Nr. TALOJA Phase II, Navi Mumbai

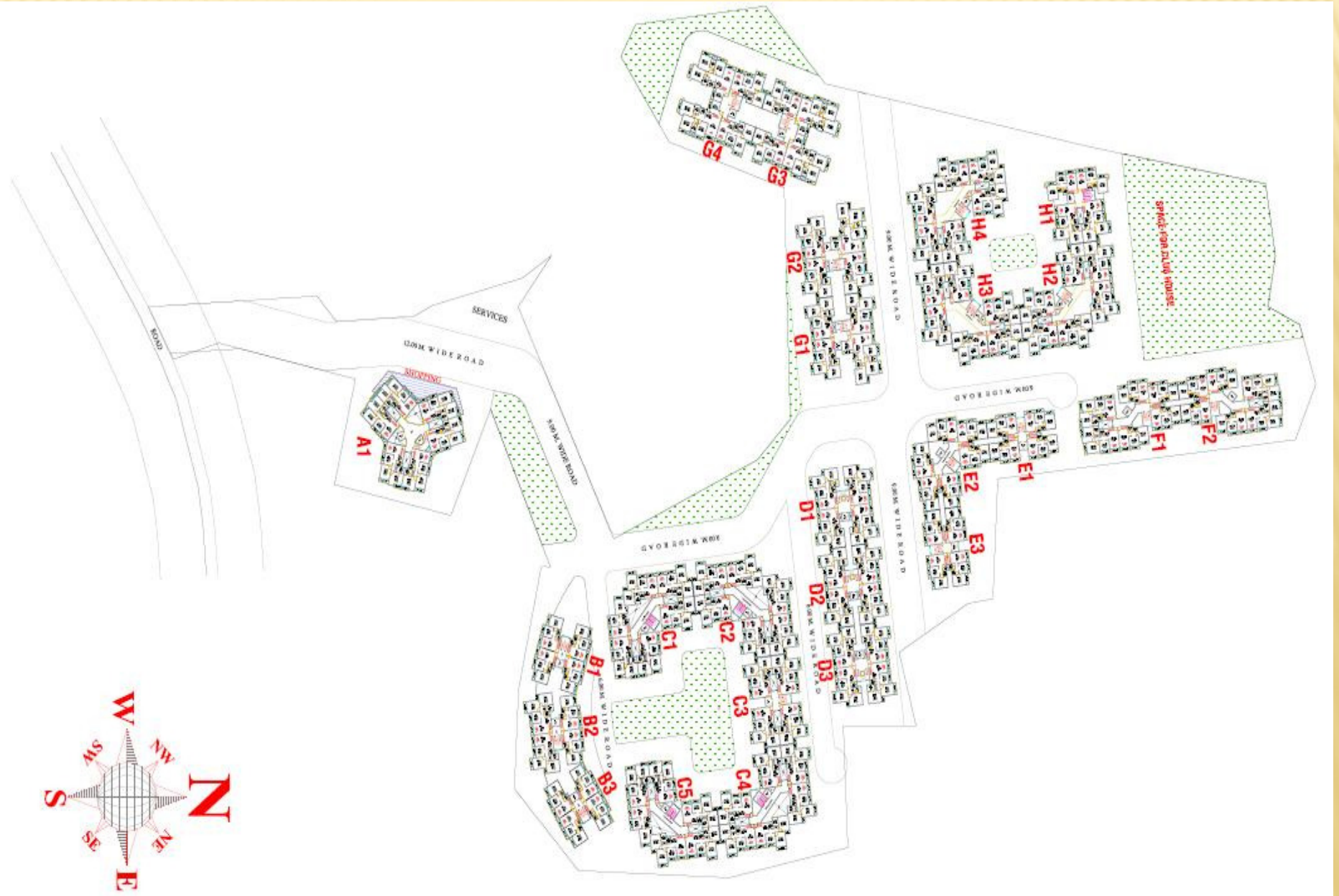
Stilt+4 Storeyed – 480 flats, 1BHK & 2 BHK Flats

100 % Residential Project

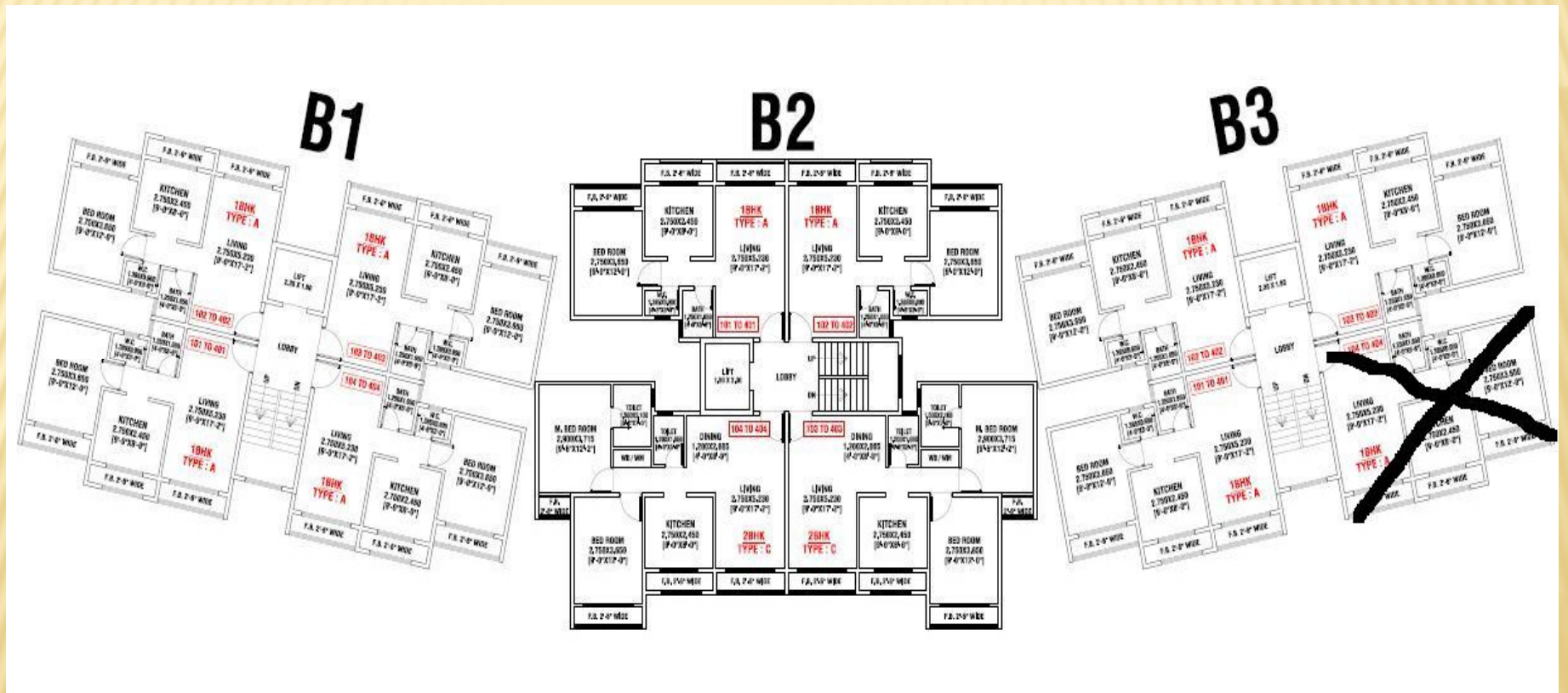
GOOGLE IMAGE LOCATION MAP



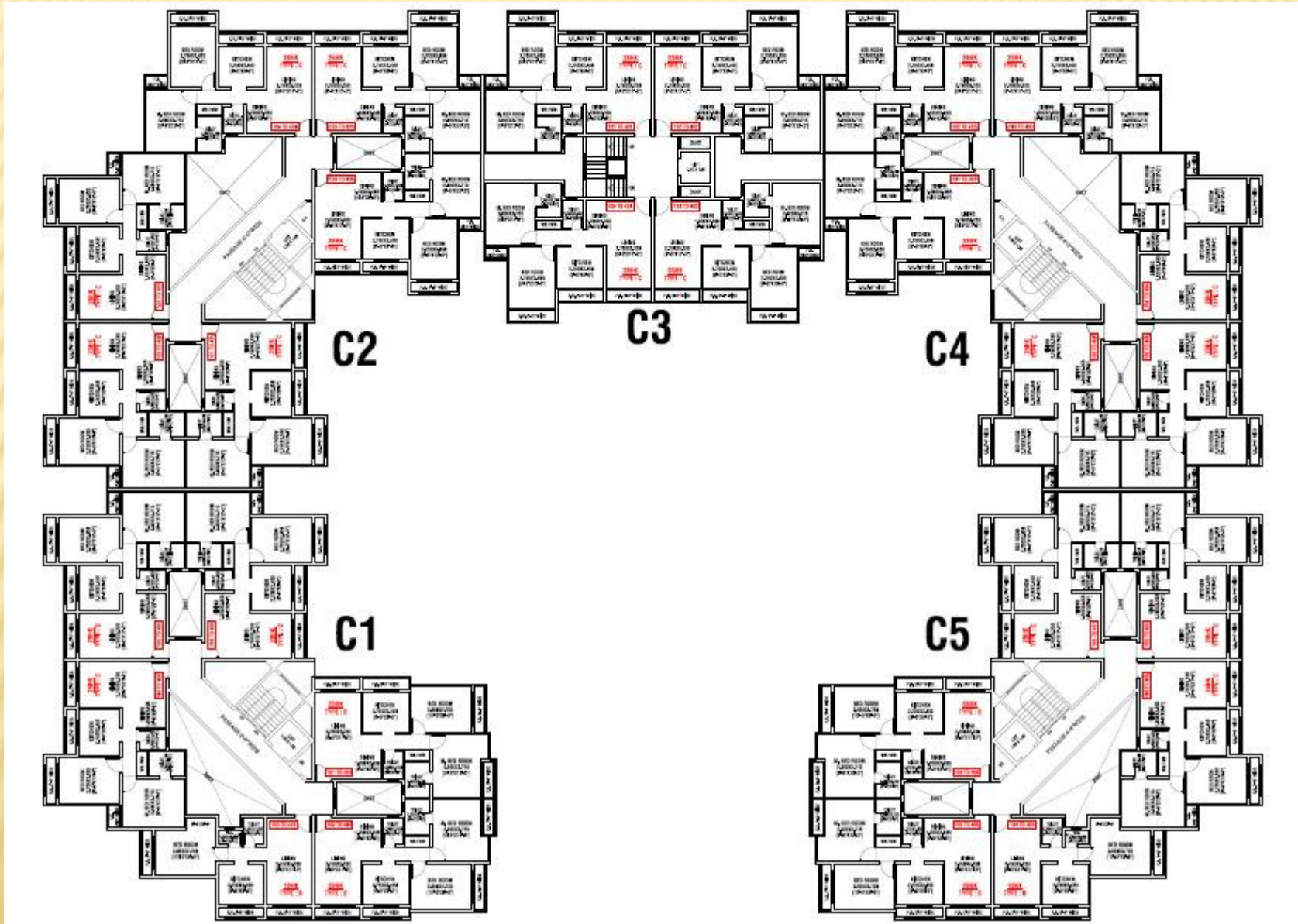
MASTER LAYOUT



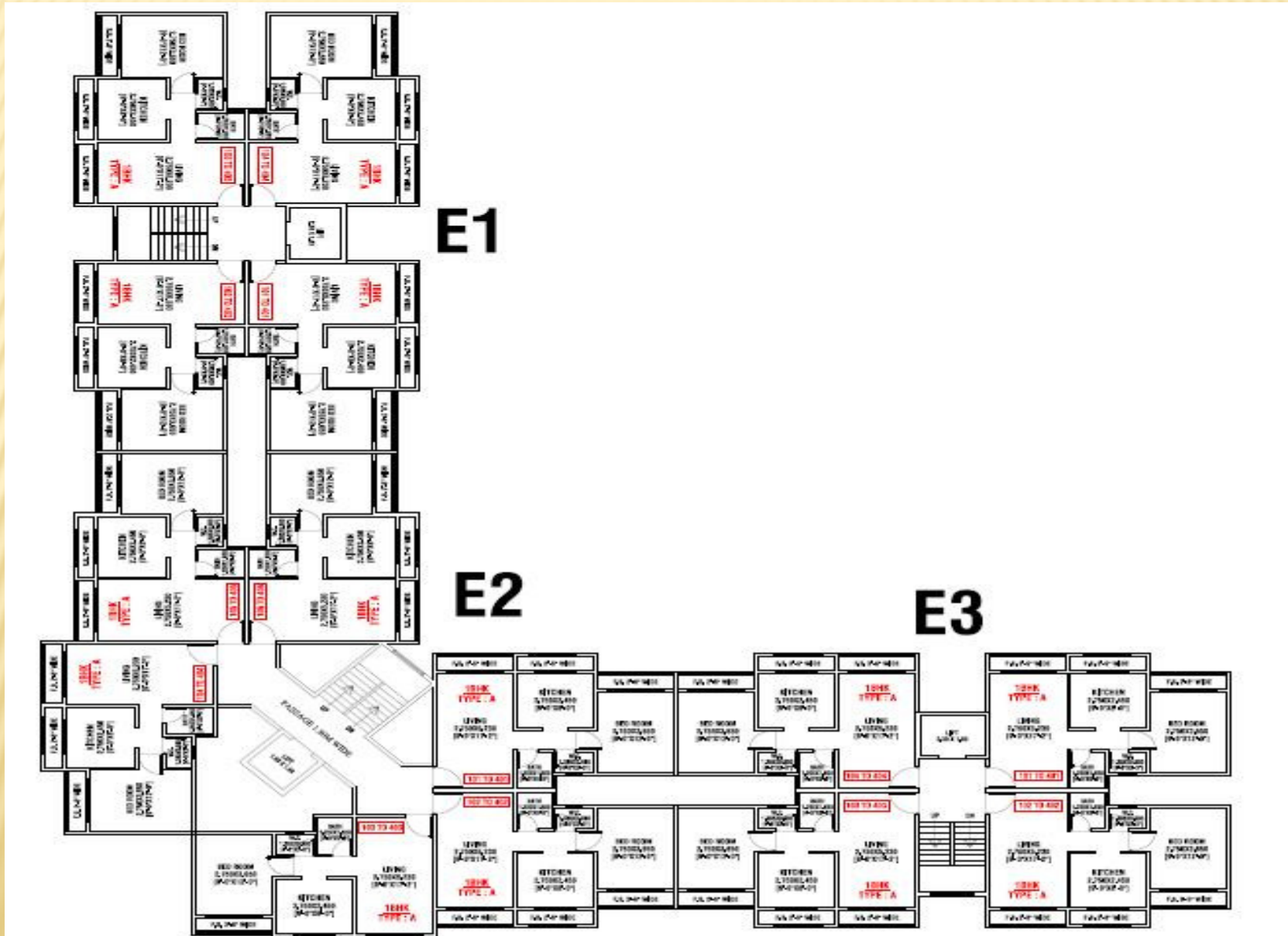
"B" BLOCK



"C" BLOCK



“E” BLOCK



CLUB HOUSE



PROJECT FEATURES

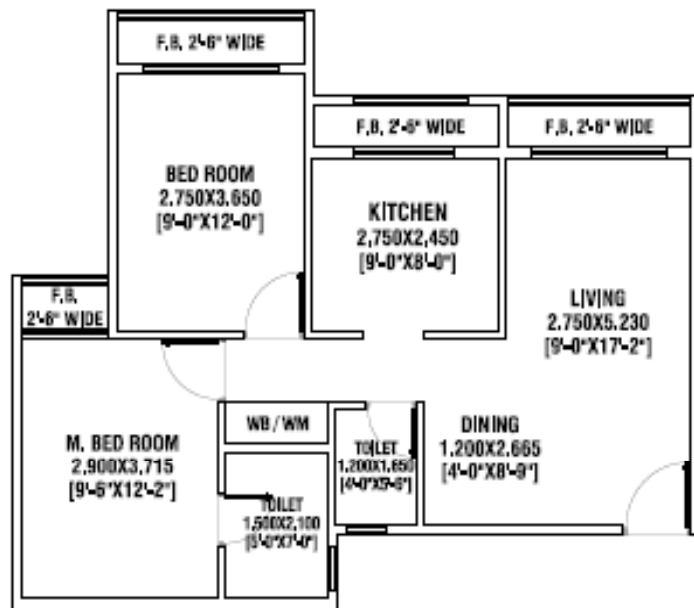
- Stilt + 4 storeyed Buildings, 480 flats.
- A premium “**Mini Township**” at Taloja.
- Near upcoming Metro Station.
- Close to Taloja Railway Station.
- Near to CIDCO planned city Kharghar.
- 5 kms. from Mumbai Pune Expressway.
- 15 minutes from Proposed Navi Mumbai Airport.
- Direct S.T. bus service from Navi Mumbai to Taloja.
- Planned 1 BHK and 2 BHK residence.

EXTERNAL AMENITIES

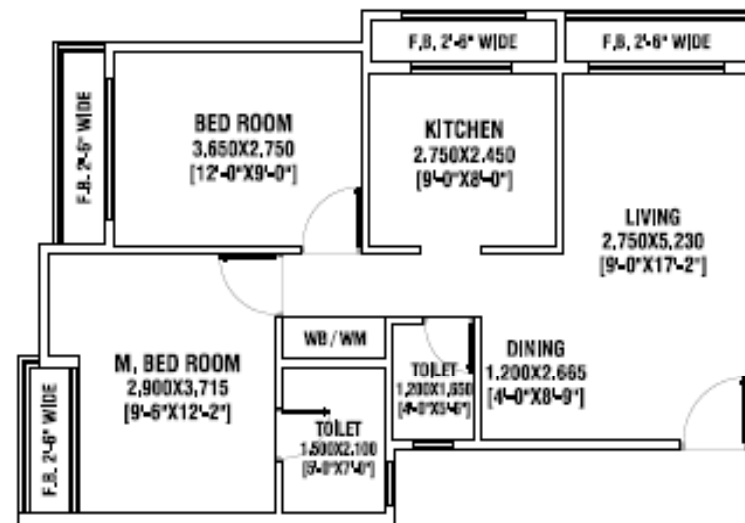
- Mesmerising Elevation .
- Elegant Entrance Lobby.
- Swimming Pool.
- Beautiful landscaped garden.
- Health club with gymnasium and steam room.
- Children's game room and activity area.
- Community hall.
- Reputed make elevator in each wing.
- Designer pathways.
- Pure acrylic external paint.
- Decorated Floor lobbies.
- External Camera for Security Checks.

INTERNAL AMENITIES

- 2 x 2 vitrified flooring in all rooms.
- POP on all walls with moulding cornices.
- Luster Paint on internal walls.
- Granite top kitchen platform with S.S. sink with full height glazed tiles above platform.
- Aluminum powder coated sliding windows.
- Concealed plumbing with premium quality CP fitting and branded sanitary ware.
- Full glazed tiles in bathrooms upto beam level.
- Moulded panel main door & bedroom doors.
- FRP doors for bathroom.
- Concealed electrical wiring with ample electrical points and modular switches.
- Good quality hardware fittings.
- Dedicated space for wash basin and washing machine with tiles upto beam level .



**TYPICAL UNIT PLAN OF 2BHK
(TYPE : C)
(BLDG. B2, C1, C2, C3, C4, C5)**



**TYPICAL UNIT PLAN OF 2BHK
(TYPE : B)
(BLDG.C1 & C5)**

PROJECT:

**ARIHANT - ANSHULA
AT 6HOT**

TITLE:

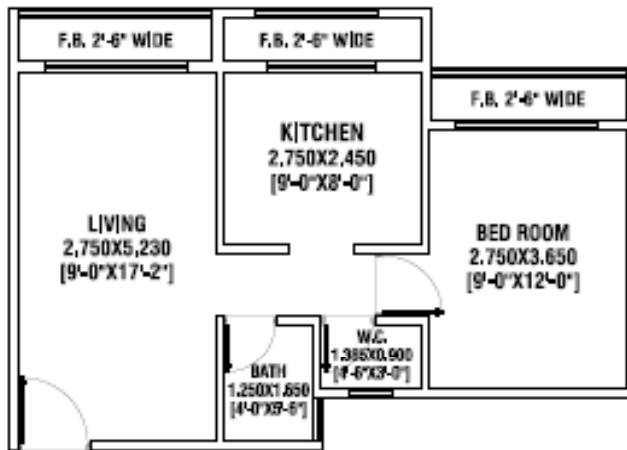
TYPICAL UNIT PLANS OF 2BHK

BUILDING TYPE:

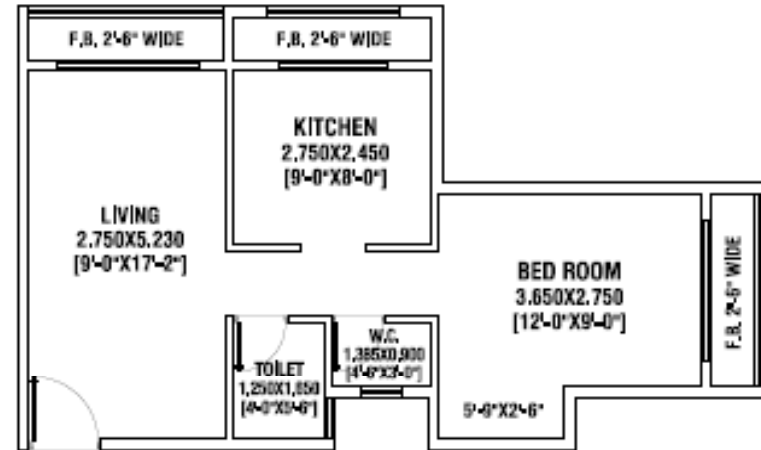
PHASE : 01

DEVELOPER:

ARIHANT



**TYPICAL UNIT PLAN OF 1BHK
(TYPE : A)
(BLDG. B1, B2, B3)**



**TYPICAL UNIT PLAN OF 1BHK
(TYPE : B)
(BLDG. C1 & C5)**

PROJECT:

**ARIHANT - ANSHULA
AT GHOT**

TITLE:

TYPICAL UNIT PLANS OF 1BHK

BUILDING TYPE:

PHASE : 01

DEVELOPER:

ARIHANT

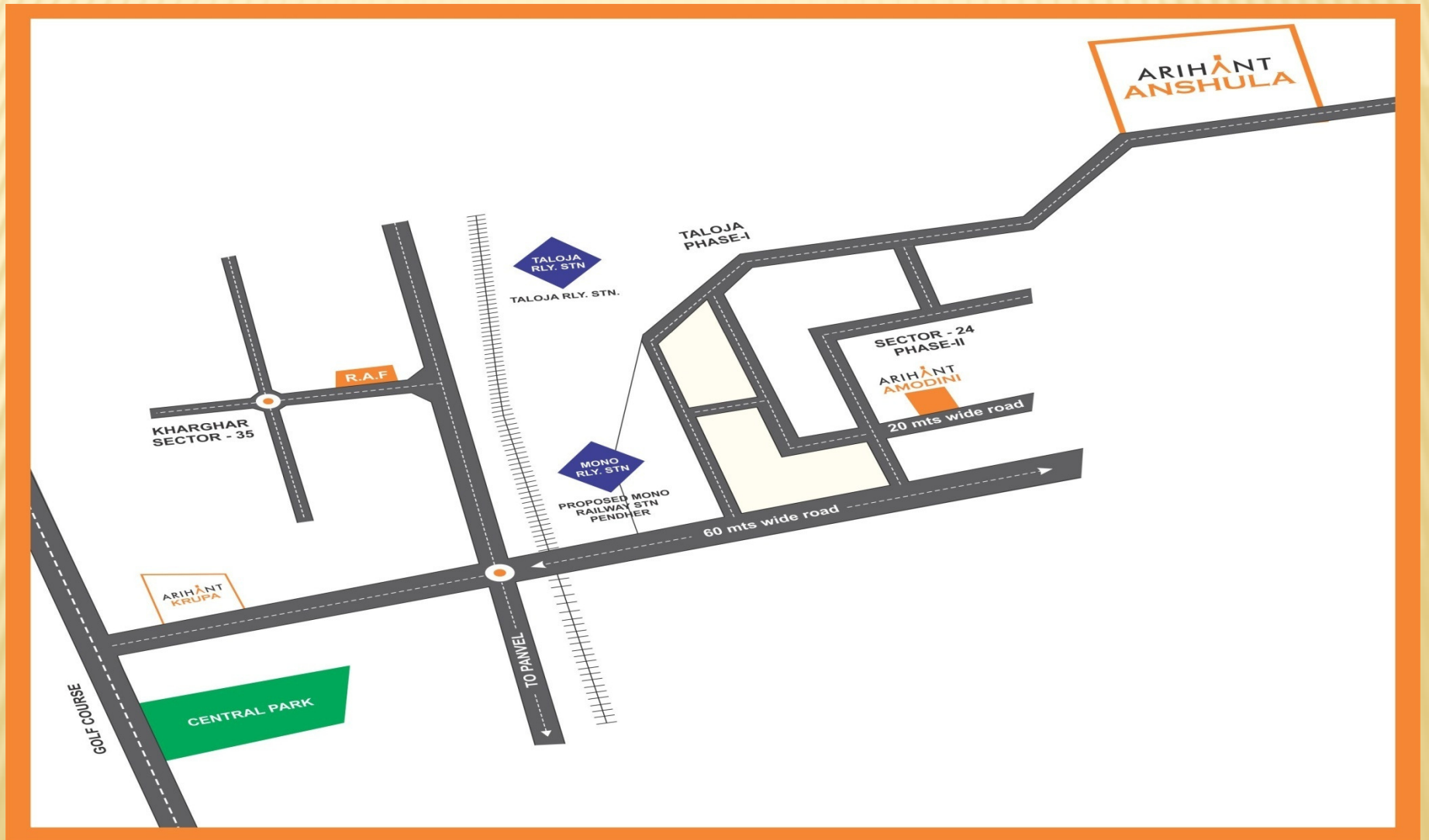
CURRENT STATUS (B1 TO B3 BLOCK)



CURRENT STATUS (C1 TO C3 BLOCK)



LOCATION MAP



ARIHANT

SUPERSTRUCTURES LTD.
CONTINUING STABILITY

OUR PROJECT LOCATIONS

KHARGHAR | TALOJA | PANVEL | TURBHE - VASHI | KHOPOLI | KALYAN SHIL ROAD | VASHI | BADLAPUR
KARJAT | JODHPUR - RAJASTHAN

**Corporate office: 302, Persipolis Building, Plot No. 74,
Sector 17, Vashi, Navi Mumbai, Mumbai,
Maharashtra - 400703**

Tel: 022-41292222 SMS "ARIHANT" on 56161

For Project Detail E-mail: sales@asl.net.in Website: www.asl.net.in