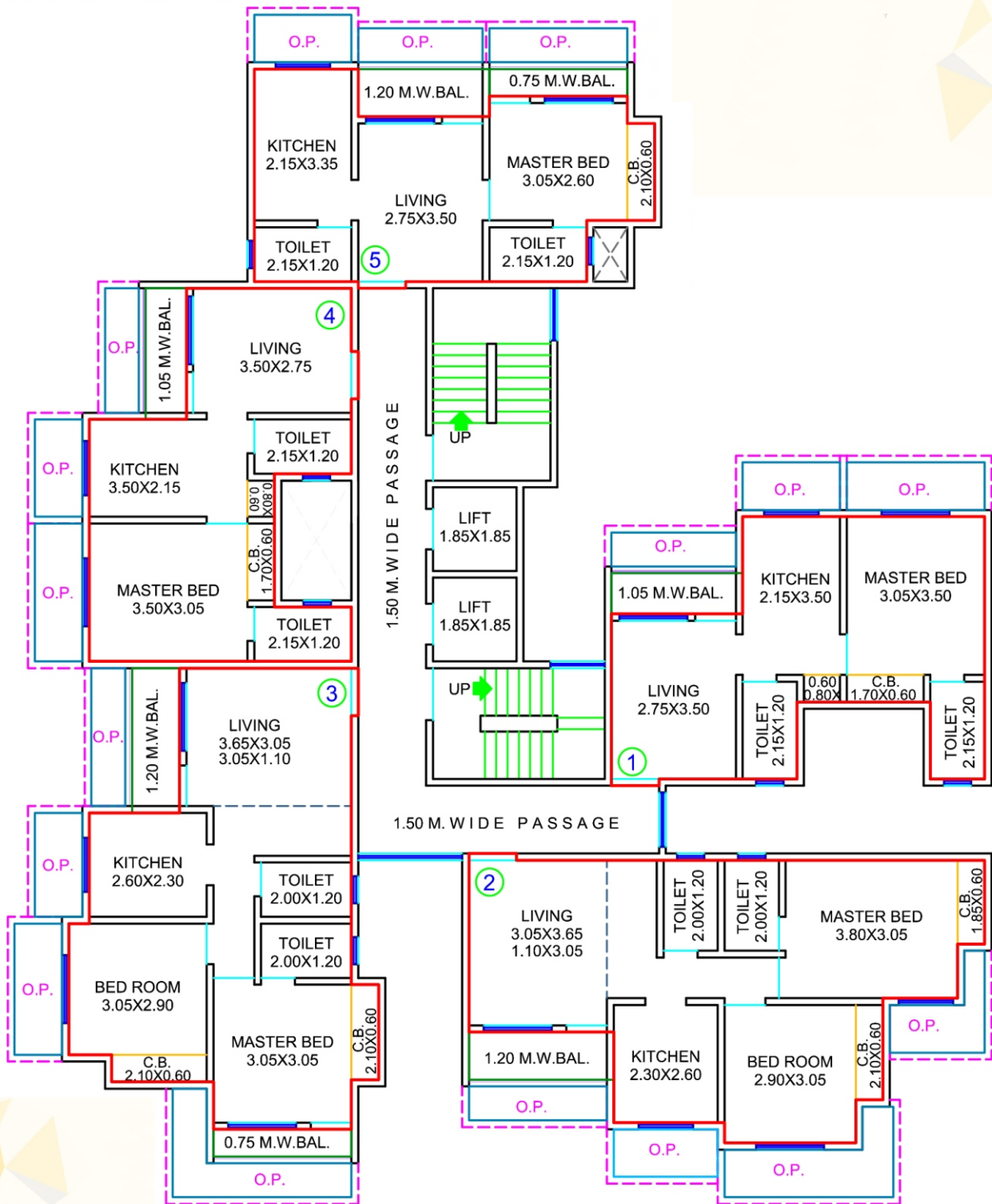


Laxmi Heights

Experience the fine living



Typical Floor Plan



INTERNAL ROAD

TYPICAL 1ST TO 7TH, 9TH TO 12TH & 14TH FLOOR PLAN

"Quality homes you deserve."

Amenities

LIVING & BEDROOM

- Decorative main door.
- Elegant vitrified flooring in entire flat with skirting.
- False ceiling in living & bedroom.
- Anodized aluminium french windows with mosquito net fitted.
- TV, Telephone and AC point in living & bedroom.

KITCHEN

- Kitchen platform with granite & S.S.Sink.
- Designer ceramic tiles dado up to door height.
- Provision for exhaust fan, water purifier, fridge & washing machine point.

BATHROOM

- Designer anti skid flooring.
- Designer tiles dado up to door height.
- Concealed plumbing with quality sanitary ware fixtures and attractive CP fitting.
- Storage water tank over bathroom.

GENERAL

- Grand and Designer entrance lobby.
- Kone or equivalent elevator in wing.
- Internal wall with smooth P.O.P finish.
- Rain water harvesting facility.
- Adequate electric points with concealed wiring and modular switches of reputed brand.
- Plastic paint in internal wall.
- Loft over bathroom.

SAFETY

- well designed RCC structure.
- Modern fire fighting system.
- 24x7 video surveillance.
- Intercom facility.
- Full height M.S.Grill in all rooms.

"We provide you with thoughtful amenities that makes life carefree."

Location Plan



A Project by



- www.omsaicharanbuilders.com/laxmi-heights/
- laxmiassociates54@gmail.com
- 9833123138/9821722650/9821184043

Office Address
G-2, New Sai Charan Complex Bldg. No-1,
Chs-Ltd. Prabhakar Dattu Mhatre Marg,
Behind Goddev Village, Bhayander east,
Dist - Thane 401105

**Survey No 215 (old), New 198
Hissa No 1**

ARCHITECT
TEJ'S Consultants