

**YOUR  
DREAM  
HOME  
IS HERE**



**153  
SKYE**



**153  
SKYE**

## ABOUT Us

Welcome to your own piece of heaven right in the heart of Matunga West. Nestled in a quiet lane just off the main road (Takandas Kataria Marg) with excellent connectivity by road, train & the proposed metro to reach the business hubs of South Mumbai & BKC in less than 15 minutes. This low density project will be home to only 35 families. At the end of the day when you come home, not only are you part of a vibrant & youthful community in the Shivaji Park area but well connected to the entertainment hubs of Lower Parel & Bandra. Get to work in less than 15 minutes to BKC & Lower Parel. Education institutes for the youth, super markets for the home-makers & community gardens for the elderly are all minutes away from your home. In the journey of real estate, we have started with compact, standard and luxury size homes styles in the city of Mumbai. We believe in giving more than what will be needed for living of a society. Buying a home in a city like Mumbai is a long and difficult task and so with a solution of having a home at affordable rates is now possible.





## AMENITIES



Gymnasium



Kids Play Area



Mechanized Car Parking



Power Back-up Facility



EV Charging Facility

## INTERIOR



Branded Vitrified Tiles in all the Rooms



CP & Sanitary Fitting of a Reputed Brands



Premium Quality Granite Kitchen Platform



Premium Aluminium Windows with Anodised Powder Coated Finish



Black Granite / Marble Sills



Provision for High Speed Internet

## LOCATION



Siddhivinayak Temple (2.6 KM)



School, Banks & Hospitals within range (1000 Mtrs.)



Matunga Road Railway Station (300 M)



Shivaji Park (800 M)



Vegetable market, Groceries, Super markets within range (250 Mtrs.)

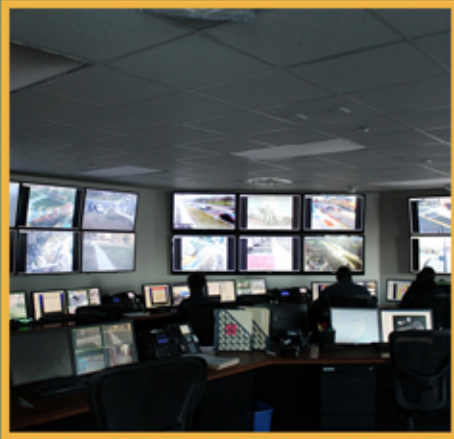
# FACILITIES



Grand Entrance Lobby



RO Water System



24 Hours Security  
& CCTV



Rainwater Harvesting  
System



Fire Extinguisher

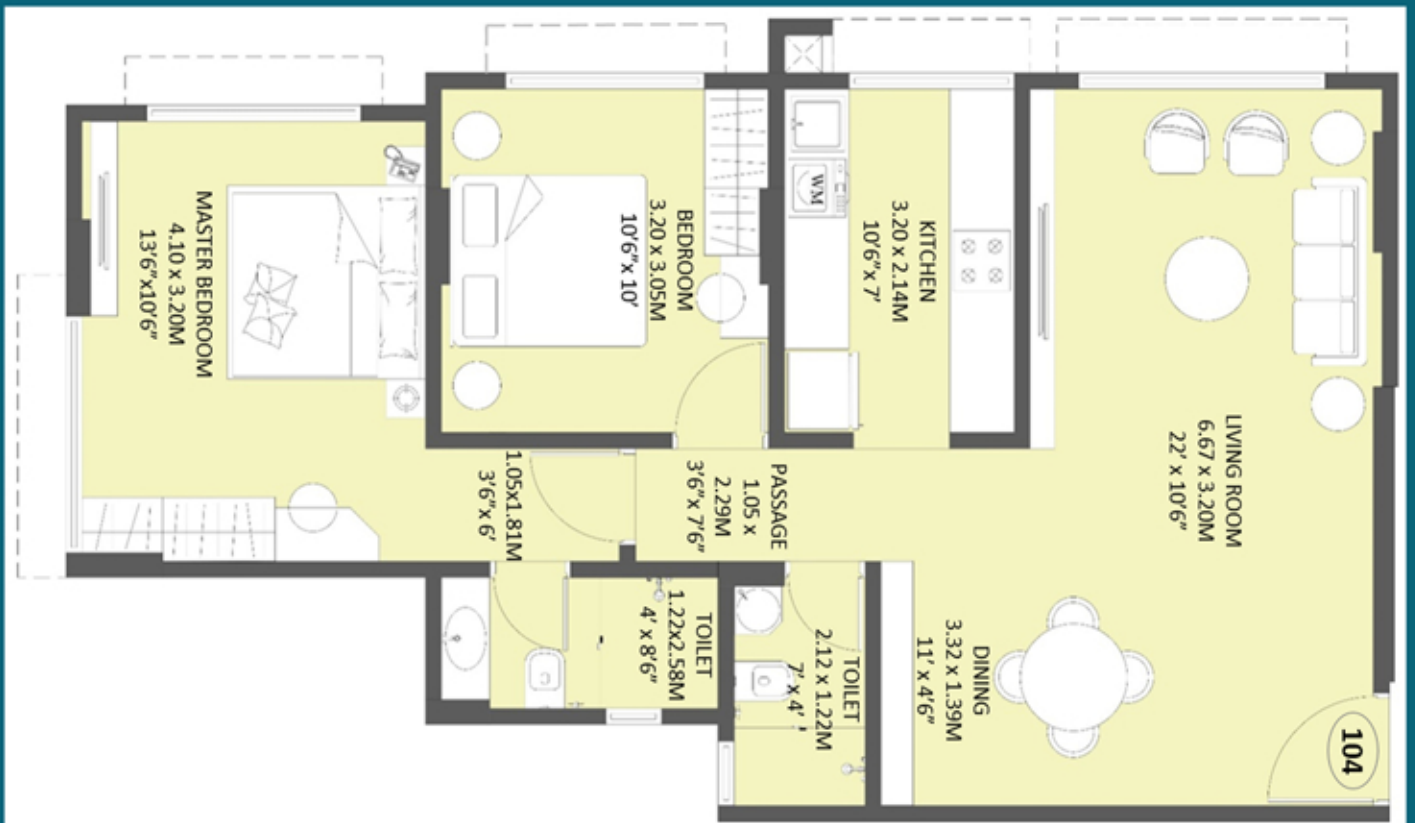
“ A building is always made **twice**, first in the **mind**, then in **real life**.

**ALWAYS DREAM BIG !**



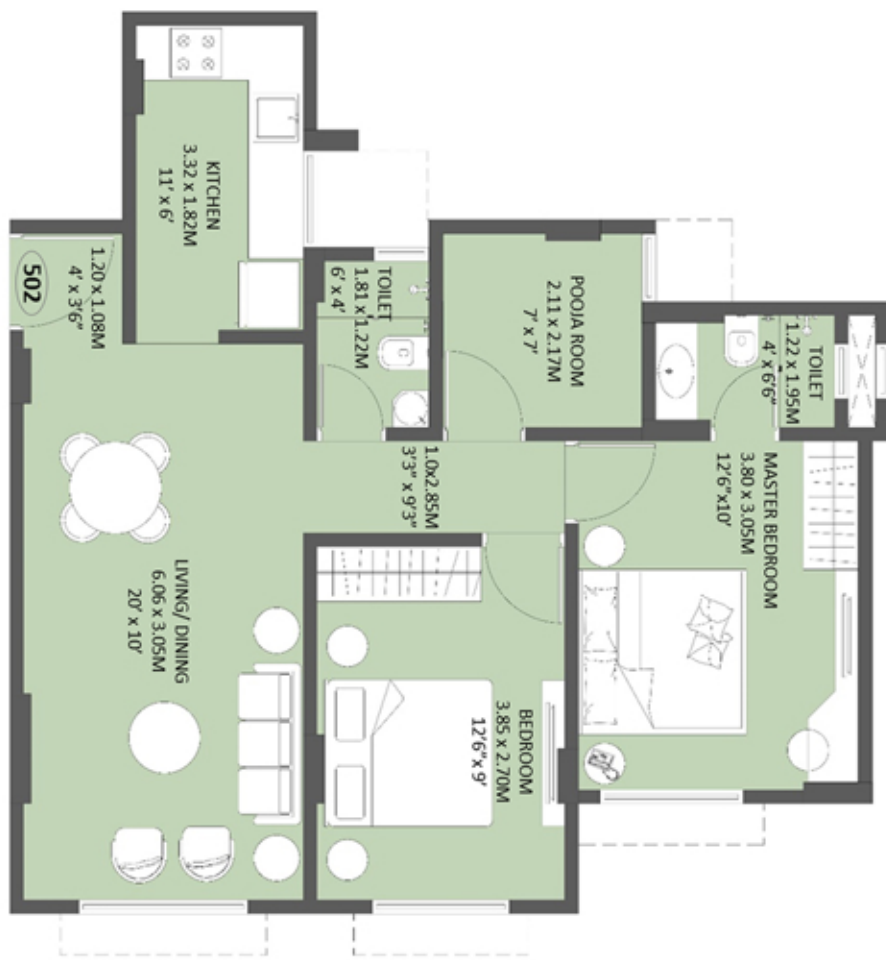
# 2 BHK LUXURY

69.64 SQ.M =  
750 SQ.FT.



# 2.5 BHK

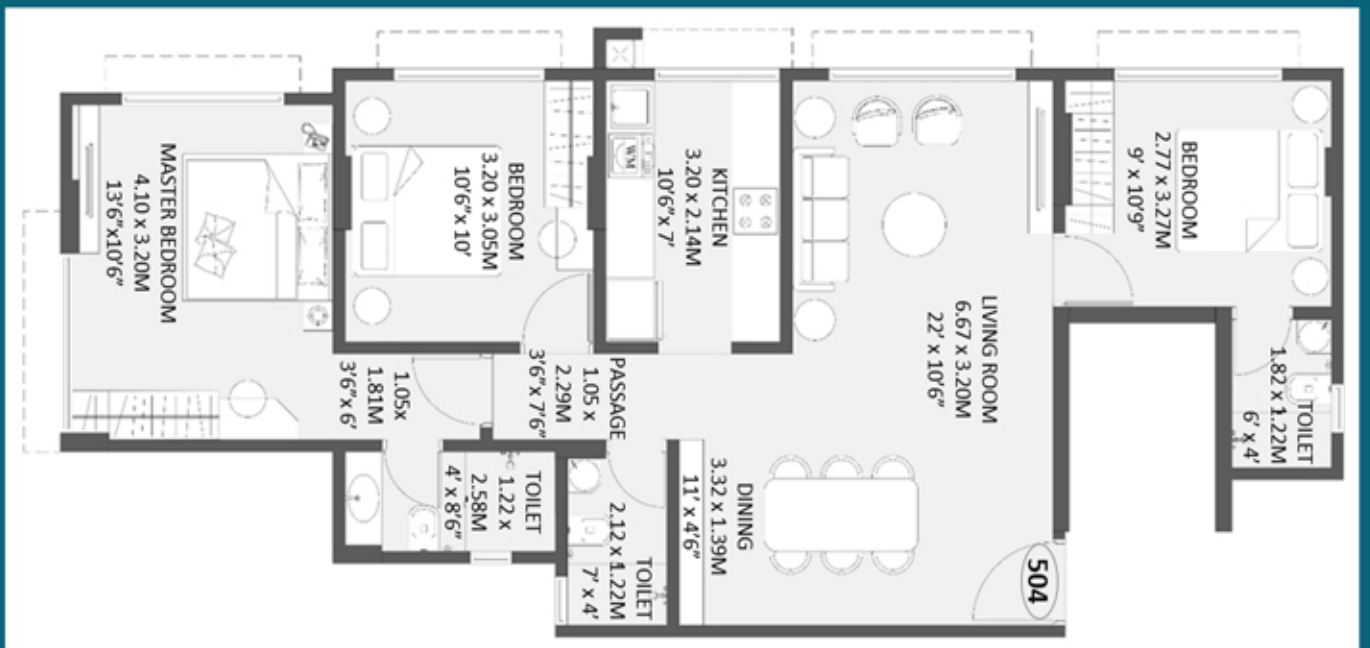
63.60 SQ.M =  
685 SQ.FT.





# 3 BHK

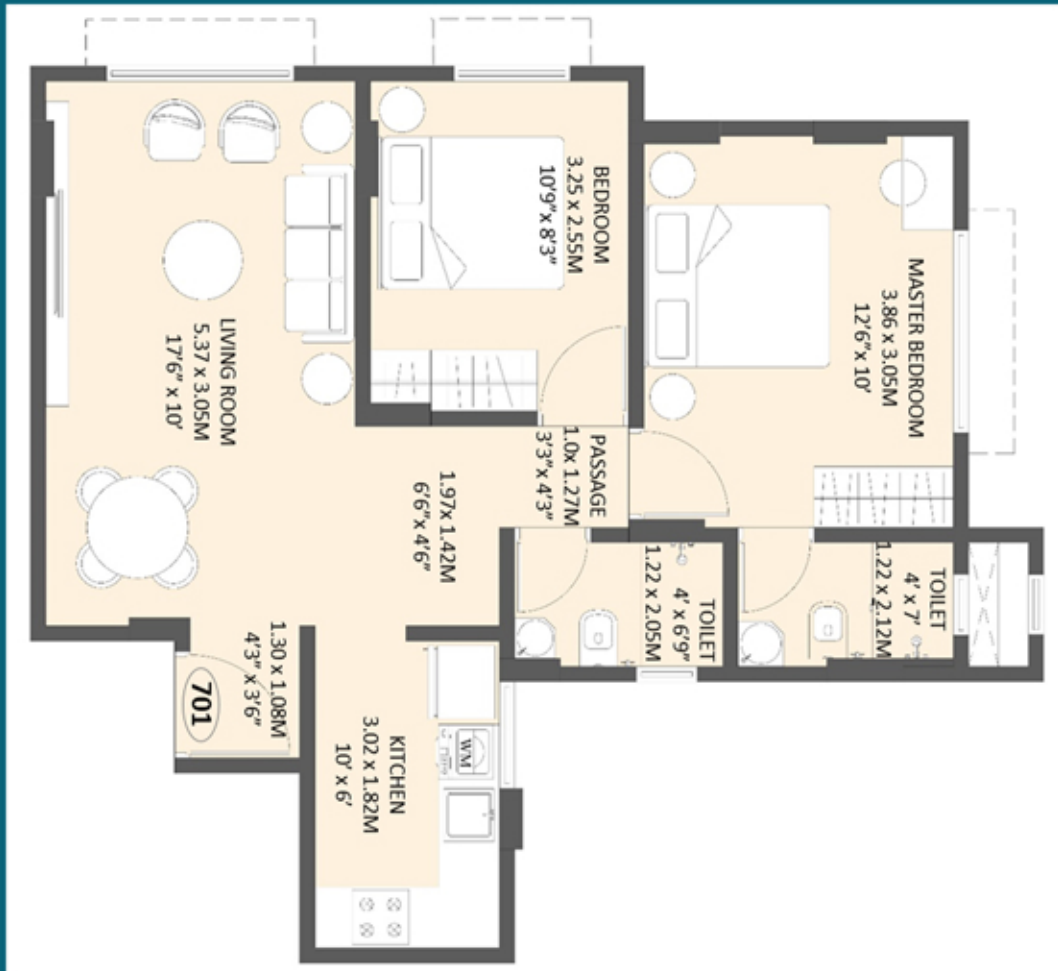
81.32 SQ.M =  
876 SQ.FT.





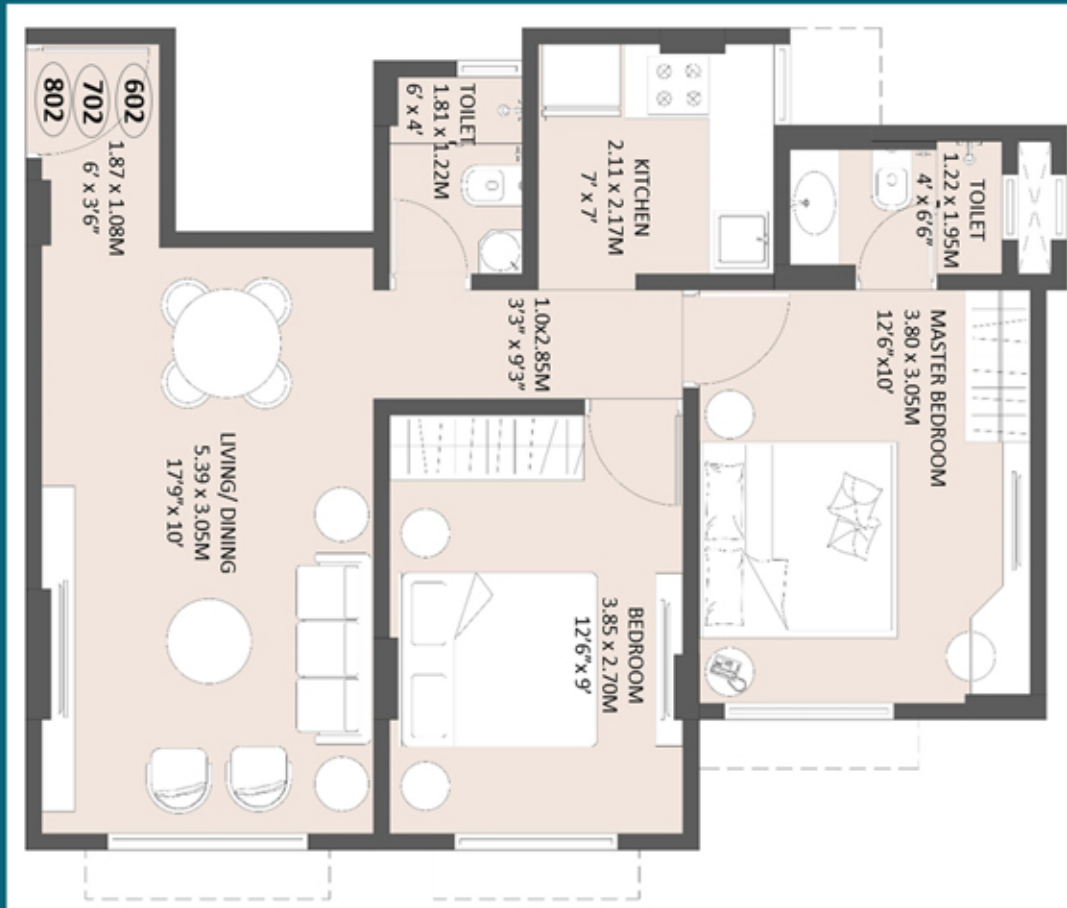
# 2 BHK COMPACT (A)

55.64 SQ.M =  
599 SQ.FT.



# 2 BHK COMPACT (B)

55.55 SQ.M =  
598 SQ.FT.





153  
SKYE



Since 1963

1, 2 & 3 BHK Apartments

Starting ₹ 2.40 CR \*

T. H. Kataria Marg

Located in Matunga (W)

Full CC Received

Apporved By 'Bank of India' & 'Bank of Maharashtra'

MahaRera No.:P51900047692

<https://maharera.mahaonline.gov.in>

COPYRIGHT © 2022 153 SKYE. ALL RIGHTS RESERVED.

Disclaimer: The plans, specifications, images and other details herein are only indicative and the Developer / Owner reserves the right to change any or all of these in the interest of the development. This printed material does not constitute an offer and / or contract of any type between the Developer / Owner and the recipient. Any purchaser / lessee of this development shall be governed by the terms and conditions of the Agreement for Sale / Lease entered into between the parties, and no details mentioned in this printed material shall in any way govern such transactions.

**Address:**

FP No 153, TH Kataria Marg, Matunga West,  
Mumbai, Maharashtra 400016

**Website:**

[www.153skye.com](http://www.153skye.com)



**Project Detail  
Reports:**