

SHILP[®]
REVANTA

3 BHK EXCLUSIVE HOMES



WELCOME TO A LIFESTYLE THAT KNOWS NO LIMITS!

Welcome to the dawn of a lifestyle of true extravagance. SHILP REVANTA is setting new standards in simplicity, functionality and luxury.

Residents of SHILP REVANTA will enjoy every luxury and pleasure of a limitless lifestyle with more than 75 world class amenities.

SHILP[®]
REVANTA

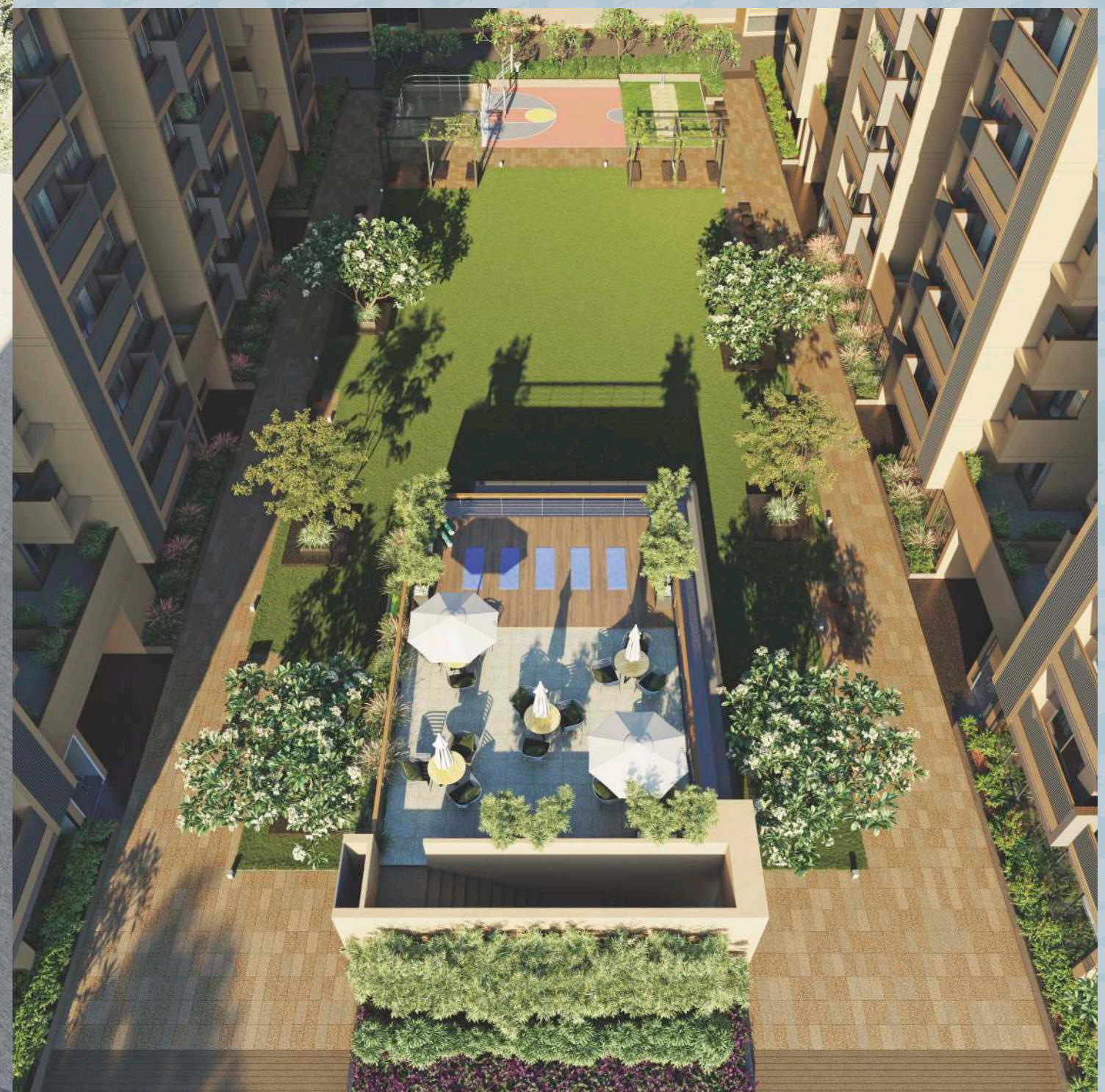


A LIFESTYLE
ENGULFED IN
THE GREENS!

SHILP®
REVANTA

INDULGE YOURSELF
INTO CALM
& COMPOSURE





COUNTLESS AMENITIES
FOR EVERYONE
IN THE FAMILY



A COMMUNITY
FULL OF LIFE!

SHILP[®]
REVANTA



A PERFECT BLEND OF
RELAXATION & REJUVENATION





SHILP[®]
REVANTA



SITE PLAN



70+

AMENITIES

SHOP AREA

NO.	AREA	SIZE	NO.	AREA	SIZE	NO.	AREA	SIZE	NO.	AREA	SIZE
01	SHOP	17'6" x 32'7"	12	SHOP	10' x 66'4"	25	SHOP	10'10" x 66'4"	38	SHOP	10' x 55'1"
02	SHOP	14'6" x 62'0"	12A	SHOP	10' x 49'6"	26	SHOP	11' x 66'4"	39	SHOP	10' x 35'3"
03	SHOP	14'7 1/2" x 66'4"	14	SHOP	14'7" x 34'10"	27	SHOP	11'0" x 50'1"	40	SHOP	10' x 55'1"
04	SHOP	10'0" x 66'4"	15	SHOP	10' x 66'4"	28	SHOP	21'0" x 43'4"	41	SHOP	10' x 55'1"
05	SHOP	12'4" x 66'4"	16	SHOP	10' x 66'4"	29	SHOP	15'4" x 37'10"	42	SHOP	10' x 55'1"
06	SHOP	10' x 49'6"	17	SHOP	10' x 66'4"	30	SHOP	22'7" x 31'9"	43	SHOP	9'7" x 55'1"
07	SHOP	10' x 66'4"	18	SHOP	15'10" x 66'4"	31	SHOP	14'7" x 20'7"	44	SHOP	9'7" x 55'1"
08	SHOP	10' x 66'4"	19	SHOP	10' x 66'4"	32	SHOP	10'0" x 35'3"	45	SHOP	10' x 55'1"
		32' x 8'1"	20	SHOP	10' x 66'4"	33	SHOP	9'3" x 55'1"	46	SHOP	10' x 55'1"
09	SHOP	7'9" x 34'	21	SHOP	12'4" x 49'6"	34	SHOP	10' x 55'1"	47	SHOP	10' x 35'3"
10	SHOP	7'9" x 34'	22	SHOP	10'0" x 66'4"	35	SHOP	10' x 55'1"	48	SHOP	14'7" x 20'7"
11	SHOP	10' x 66'4"	23	SHOP	10'0" x 66'4"	36	SHOP	10' x 55'1"	49	SHOP	10' x 55'1"
		32' x 8'1"	24	SHOP	14'7" x 66'4"	37	SHOP	10' x 55'1"	50	SHOP	13'4" x 55'1"

- 01 RESIDENTIAL ENTRANCE GATE
- 02 SCHOOL BUS PICKUP-DROP OFF ZONE
- 03 SECURITY CABIN
- 04 MEDICARE CENTER (16'3"X13')
- 05 PUBLIC UTILITY STORE (13'X21'6")
- 06 LIBRARY (19'9"X20'9")
- 07 BANQUET HALL (3250 SQ.FT.) (200 PAX)
- 08 GUEST ROOM
- 09 WELL EQUIPPED INDOOR CYM AREA (35'9"X52'9")
- 10 MUSIC /DANCE STUDIO (18'6"X30')
- 11 54 PAX MINI THEATRE (40'X25')
- 12 DAY CARE (18'6"X30')
- 13 TODDLER'S ROOM
- 14 ESTATE MANAGER OFFICE (9'9"X52')
- 15 COVERED YOGA/ MEDITATION DECK AREA
- 16 SKATING RINK (24'X17')
- 17 NATURAL COBBLED ENTRANCE ROAD
- 18 SEMI COVERED COMMUNITY SEATING
- 19 TROPICAL LANDSCAPE AREA WITH BOULDERS
- 20 COMMON TOILET-HIS
- 21 HANDICAPPED TOILET
- 22 COMMON TOILET-HER
- 23 WELL DESIGNED ENTRANCE BLOCK LOBBIES
- 24 SERVICE ROOM
- 25 OUT DOOR CATERING KITCHEN (18'0"X13'0")
- 26 PANTRY (11'6"X7'6")
- 27 STORE (6'6"X9'0")
- 28 BANQUET HALL HIS & HER TOILET
- 29 GUEST ROOM SEPARATE PANTRY
- 30 DRIVER/ SERVICE PROVIDER'S REST AREA
- 31 COMMON CAR WASH AREA
- 32 TV LOUNGE AREA (32'X17'9")
- 33 COVERED GARDEN SWING SEATING AREA
- 34 OPEN SEATING AREA ON TERRACE WITH LOOSE FURNITURE
- 35 8' WIDE WALKWAY AREA
- 36 INDOOR GAMES (43'7"X28'3")
- 37 MULTIPURPOSE COURT (26'X26') (VOLLEYBALL/ BASKET BALL GAMES)
- 38 BOX CRICKET (28'X17')
- 39 FUNCTIONAL LAWN AREA (7000 SQ.FT) (325 PERSON)
- 40 SALON (8'6"X7'0")
- 41 MASSAGE ROOM (8'6"X7'0")
- 42 COVERED SWIMMING POOL (15'X30')
- 43 COVERED KIDS POOL (6'6"X10')
- 44 SENIOR CITIZEN SEATING AREA
- 45 RUBBERIZED CHILDREN PLAY COURT (800 SQ.FT.)
- 46 OUTDOOR FITNESS EQUIPMENTS
- 47 NO VEHICLE ZONE LANDSCAPE AREA
- 48 CANTILEVER SEAT WITH ORNAMENTAL TREE
- 49 HANDICAP FRIENDLY RAMP
- 50 HIS TOILET WITH CHANGE ROOM(11'X11')
- 51 HER TOILET WITH CHANGE ROOM(11'X11')
- 52 JANITOR ROOM (8'6"X7'0")
- 53 POOL PUMP ROOM (8'6"X7'0")
- 54 INFINITY EDGE POOL WITH PEBBLES
- 55 WATER CURTAIN FALL ON WALL
- 56 POOLSIDE WOODEN DECK AREA (1400 SQ.FT.)
- 57 POOL SIDE LOUNGER SEATING
- 58 PALM PLAZA SEATING AREA
- 59 ARTIFICIAL LAWN & GRANITE PAVED
- 60 WALKWAY
- 61 MURAL WALL WITH SCULPTURE AND RAIN WATER DROPLET
- 62 BIRD ATTRACTING & SHADE GIVING TREES ON BOUNDRY
- 63 ALLOTTED CAR PARKING
- 64 RESIDENTIAL EXIT
- 65 COMMERCIAL BASEMENT ENTRY/ EXIT RAMP
- 66 COMMERCIAL ENTRANCE PLAZA
- 67 COMMERCIAL AREA RAMP
- 68 COMMERCIAL AREA PASSAGE
- 69 TWO LIFTS PER BLOCK
- 70 EVERGREEN & FLOWERING PLANTS WITH DECORATIVE LIGHTS
- 71 BROOM FINISH TREMIX ROAD
- 72 BLOCK ENTRY DEFINING COBBLE
- 74 STONE FLOORING
- 75 EXPOSE STONE SIGNAGE WALL INDICATING PROJECT

FIRST FLOOR PLAN

2ND TO 14TH FLOOR PLAN



SHOP AREA

NO.	AREA	SIZE
101	SHOP	17'6" x 32'3"
102	SHOP	14'6" x 53'4"
103	SHOP	14'7" x 69'9"
104	SHOP	10'0" x 69'9"
105	SHOP	12'6" x 69'9"
106	SHOP	10'0" x 69'9"
107	SHOP	10'0" x 69'9"
108	SHOP	10'0" x 69'9"
		33'7" x 8'1"
109	SHOP	7'9" x 35'9"
110	SHOP	7'9" x 35'9"

NO.	AREA	SIZE
111	SHOP	10'0" x 69'9"
	SHOP	33'7" x 8'1"
112	SHOP	10'0" x 69'9"
112A	SHOP	10'0" x 69'9"
114	SHOP	14'7" x 26'3"
115	SHOP	10'0" x 69'9"
116	SHOP	10'0" x 69'9"
117	SHOP	10'0" x 69'9"
118	SHOP	15'10" x 69'9"
119	SHOP	10'0" x 69'9"
120	SHOP	10'0" x 69'9"
121	SHOP	12'4" x 69'9"

NO.	AREA	SIZE
122	SHOP	10'0" x 69'9"
123	SHOP	10'0" x 69'9"
124	SHOP	14'7" x 69'9"
125	SHOP	10'10" x 66'7"
126	SHOP	11'0" x 60'9"
127	SHOP	10'0" x 41'6"
128	SHOP	22'7" x 34'9"
129	SHOP	15'4" x 37'6"
130	SHOP	43'0" x 29'7"
131	SHOP	10'0" x 52'6"
132	SHOP	9'3" x 52'6"
133	SHOP	10'0" x 52'6"

NO.	AREA	SIZE
134	SHOP	10'0" x 52'6"
135	SHOP	10'0" x 52'6"
136	SHOP	10'0" x 52'6"
137	SHOP	10'0" x 52'6"
138	SHOP	10'0" x 52'6"
139	SHOP	10'0" x 52'6"
140	SHOP	10'0" x 52'6"
141	SHOP	10'0" x 52'6"
142	SHOP	9'7" x 52'6"
143	SHOP	9'7" x 52'6"
144	SHOP	10'0" x 52'6"
145	SHOP	10'0" x 52'6"
146	SHOP	10'0" x 52'6"
		15'1" x 20'3"

TERRACE AREA

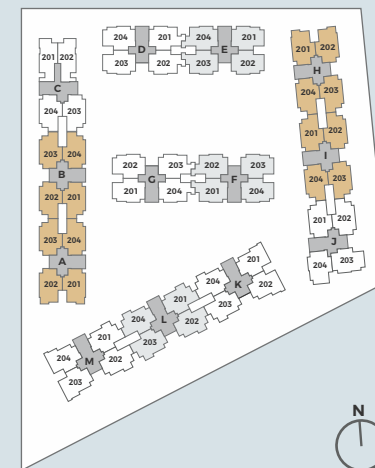
NO.	SIZE (Sq.ft.)	NO.	SIZE (Sq.ft.)	NO.	SIZE (Sq.ft.)	NO.	SIZE (Sq.ft.)	NO.	SIZE (Sq.ft.)	NO.	SIZE (Sq.ft.)	NO.	SIZE (Sq.ft.)	NO.	SIZE (Sq.ft.)
A-101	85	B-104	61	D-103	181	F-102	256	H-101	85	I-204	160	K-203	1268	M-202	1298
A-102	169	C-101	69	D-104	76	F-103	181	H-102	443	J-201	160	K-204	228	M-203	2442
A-103	143	C-102	69	E-101	76	F-104	290	H-203	860	J-202	699	L-201	228	M-204	372
A-104	59	C-103	61	E-102	181	G-101	76	H-204	162	J-203	499	L-202	1299		
B-101	59	C-104	61	E-103	256	G-102	181	I-201	162	J-204	1388	L-203	1306		
B-102	143	D-101	152	E-104	152	G-103	256	I-202	704	K-201	804	L-204	231		
B-103	144	D-102	256	F-101	145	G-104	145	I-203	699	K-202	1627	M-201	231		



UNIT PLANS

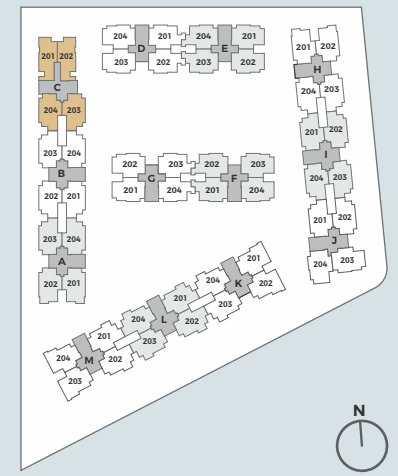


BLOCKS A, B, H & I 3BHK

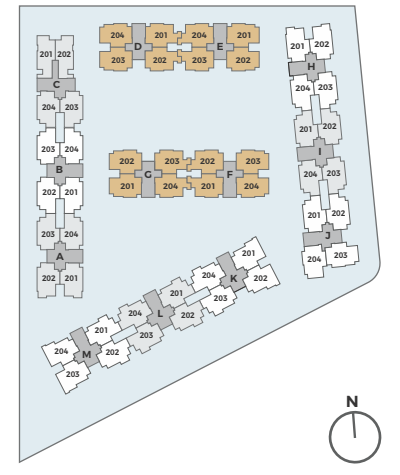
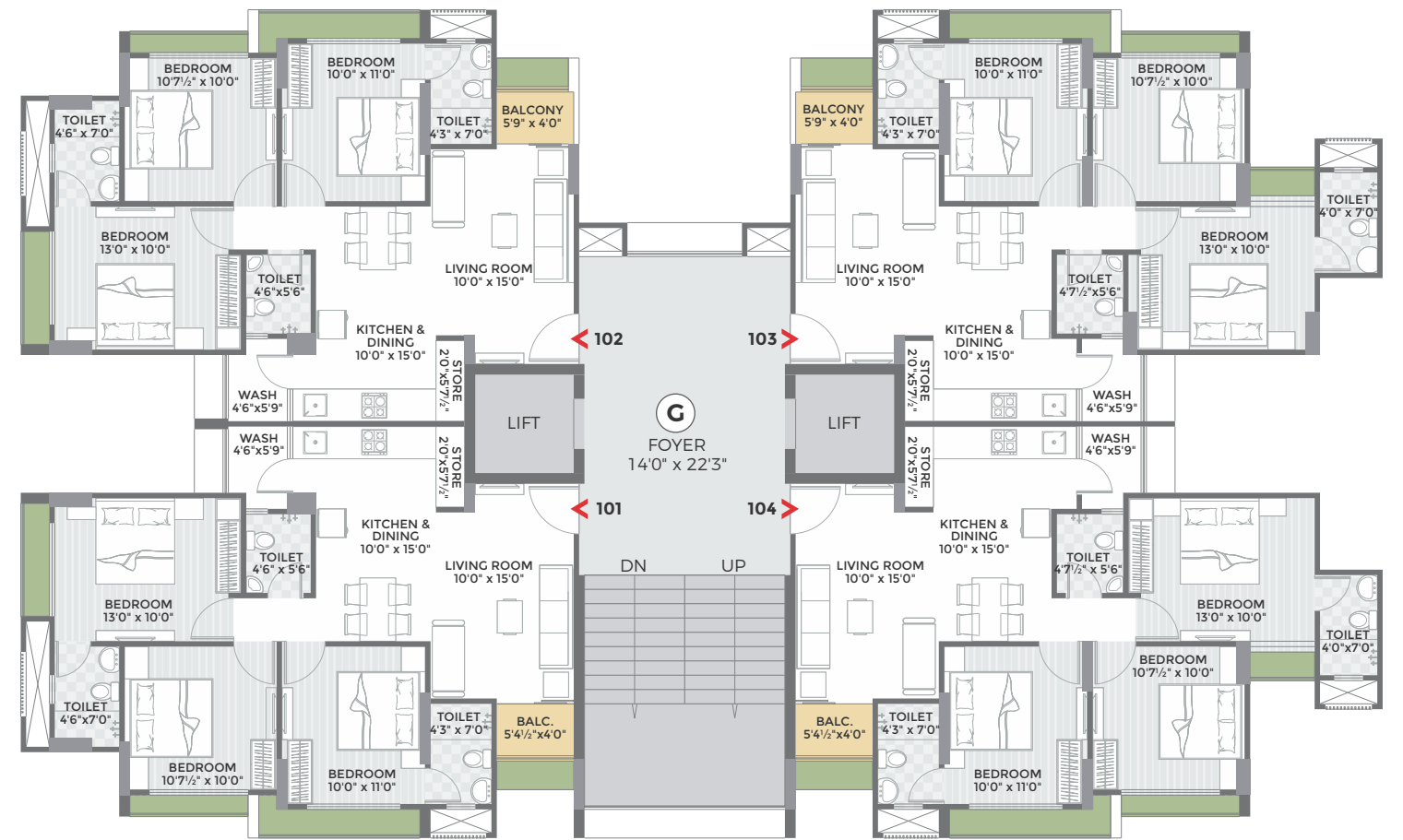




BLOCK C
3BHK

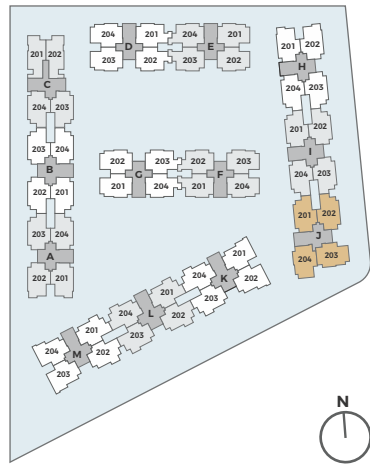


BLOCKS D, E, F & G
3BHK



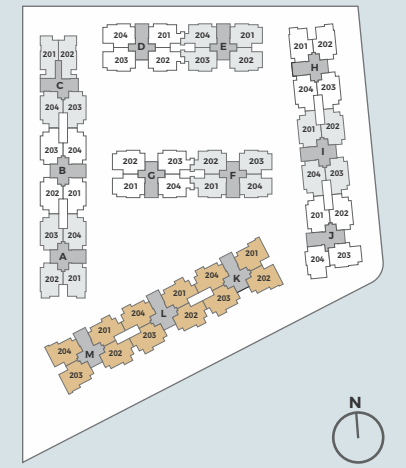
BLOCK J

3BHK



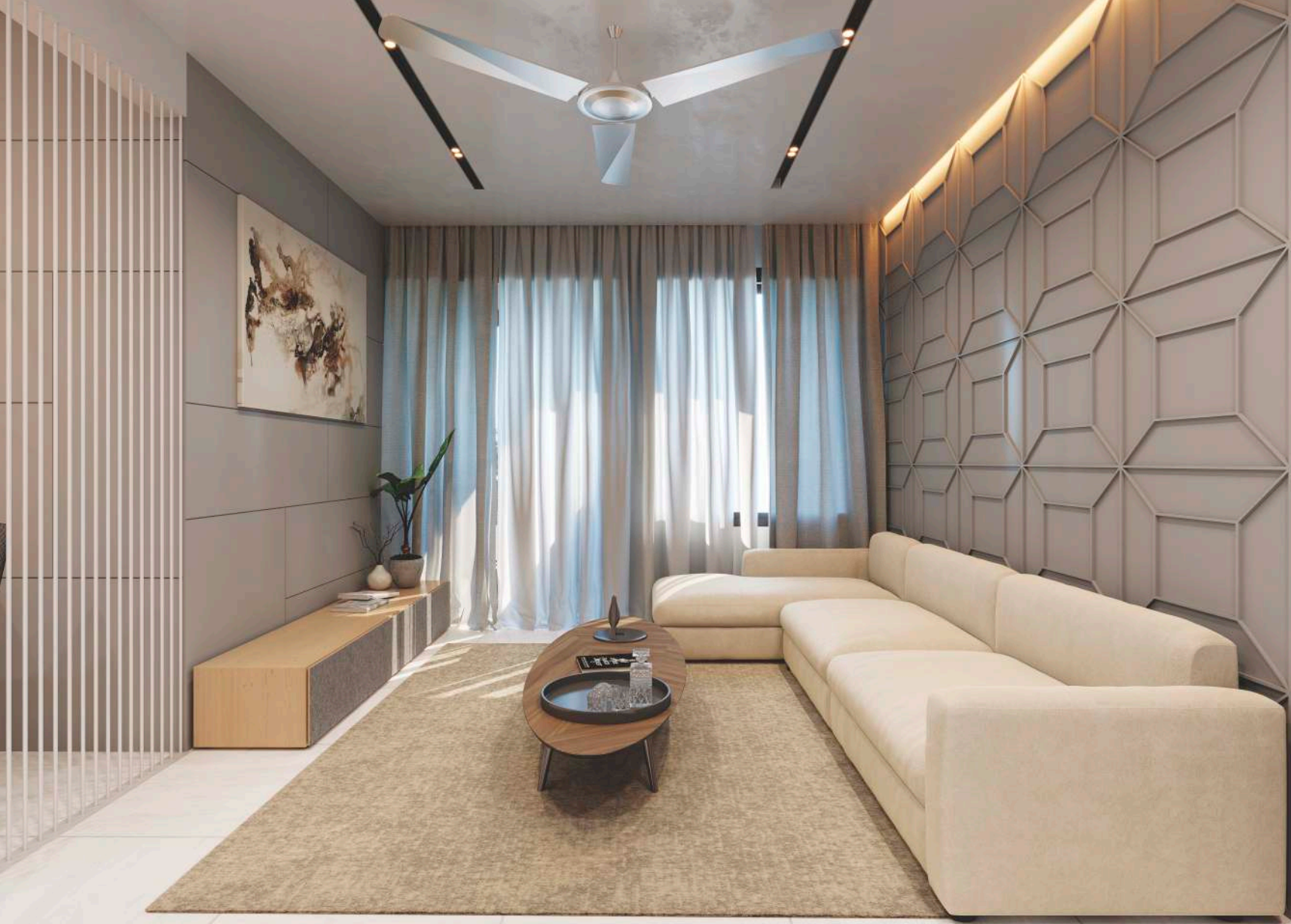
BLOCKS K, L & M

3BHK





PLANNING THAT IS
SPACIOUS &
PRACTICAL



SHILP®
REVANTA

AMENITIES



SPECIFICATIONS

WALL FINISH

- Internal Smooth Finish Plaster With Double Coat Birla Putty.
- External Double Coat Sand Face Plaster Or Texture With Acrylic Paint.

FLOORING

- Vitrified Tile Flooring In Entire Apartment.

DOOR

- Main Door - Decorative Main Door With Wooden Frame.
- Internal Door - Flush Door With Enamel Paint.

WINDOWS

- Sliding Aluminium Window Section With Anodized Or Powder Coated.

KITCHEN

- Granite Platform With Stainless Steel Sink Along With Electrical Point For Water Purifier.
- Designer Glaze Tile Dedo Upto Lintel Level.

TOILET

- Designer Ceramic Or Glaze Tile Upto Lintel Level.
- CP Fittings - Chrome Plated Branded Bathroom Fittings.

ELECTRIFICATION

- ISI Modular Switches.
- ISI Wires.
- Distribution Board With MCB For Safety And Protection.

KEY PLAN



DEVELOPERS NOTE

- All rights reserved by the developers for alteration / modification / improvement in specification and changes in dimensions and planning shall be binding to all.
- All architectural and interior views in the brochure are computer graphics simulated interpretation of the actual project.
- The brochure is just for an easy presentation of the project and should not be treated as a legal document.
- Electrical charges, Legal charges, AUDA any other facility charges shall be borne by purchasers.
- Stamp duty, registration fees, all taxes and cess shall be borne by purchasers.
- Payment should be in favour of AYB Buildcon LLP.
- In the interest of continual developments in the design and quality of construction, the developer reserves all rights to make any changes in the scheme including and not limited to technical specifications, design, planning, layout and all purchasers shall abide by such changes.
- Changes / alteration of any nature including elevation, exterior colour scheme, balcony grill or any other changes affecting the overall design concept and outlook of the scheme are strictly NOT PERMITTED during or after the completion of the scheme.
- Any RCC member (Beam, Column, Slab) must not be damaged during the interior work of purchasers.
- Subject to Ahmedabad Jurisdiction only.

SHILP[®]

BUILDING EXCELLENCE

📍 SHILP House
Besides Rajpath Club, Rajpath Rangoli Road
Bodakdev, Ahmedabad - 380054. Gujarat, India.

🌐 www.shilp.co.in

✉ sales@shilp.co.in

☎ +91 97379 61961

www.gujrera.gujarat.gov.in

RERA Registration No.: PR/GJ/AHMEDABAD/SANAND/AUDA/MAA07874/050121



Scan to view
WALKTHROUGH



Scan to view
VIRTUAL TOUR