



*Smit Infra*

A Smiting Experiene



# SMIT HEIGHTS

Bangli Road, Vasai (W)

MAHARERA NO. P99000021689





*Smit Infra*

A Smiting Experiene



Building Trust **Since 2000**

Successfully Built 10+ Projects

Ongoing Project – **SMIT HEIGHTS**

Successfully Constructed **4 Lakhs SQFT**

**1000+** Happy Customers





## FEATURED AMENITIES

### Common Amenities

Luxurious Lobby  
Rain Water Harvesting  
Children Play Area  
Branded Lifts

### Safety Features

CCTV Surveillance  
Earthquake resistance RCC Framework



What else we have got for  
you?



## EXTERNAL AMENITIES

- Stilt Parking
- Excellent planning to avoid wastage of space in every room
- Good lighting & ventilation for all flats
- Functionally and tastefully designed flats with ultra modern amenities
- Close to nature, Beautiful environment with ample Sunlight, Aeration, Nature view
- Total privacy arranged in all flats
- Well connected by all means of transport
- School, College and Hospital in close vicinity
- Big Bazar, D-Mart and Dattani Mall Multiplex near by
- Sewage treatment plan (STP) for recycling of water



# FLOOR PLAN

## FLOOR PLAN: 8<sup>TH</sup> & 13<sup>TH</sup>



## FLOOR PLAN: 1<sup>ST</sup> & 17<sup>TH</sup>





## 3D VIEW



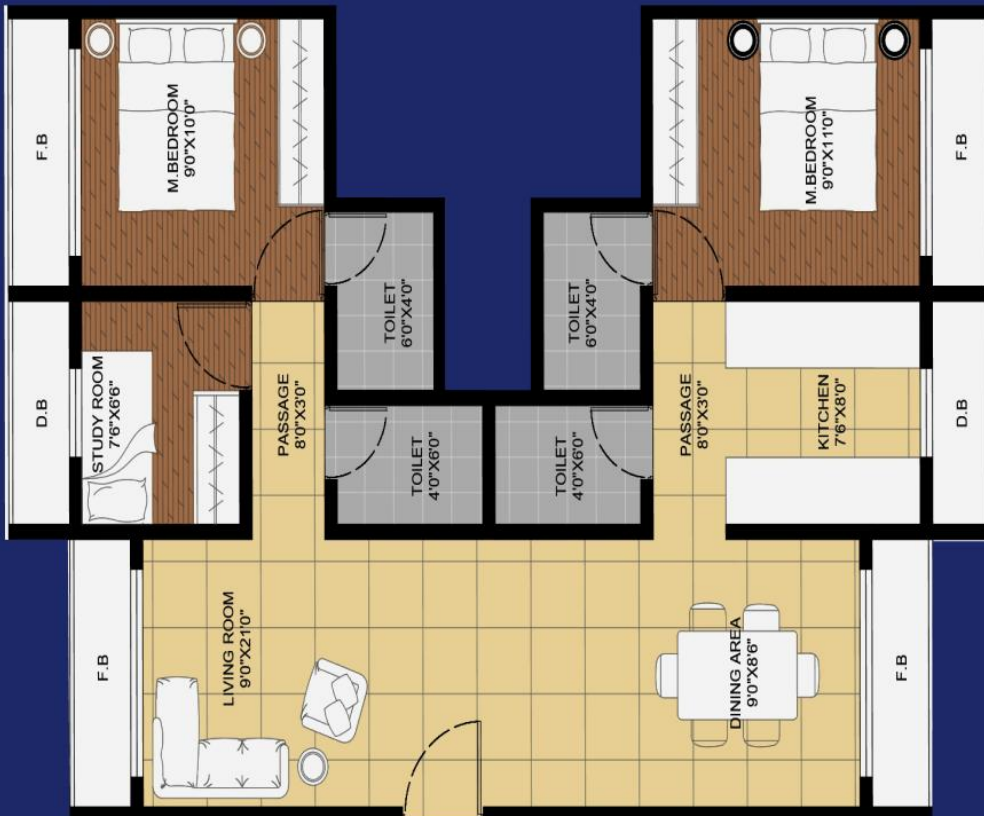
## 1BHK



## 2BHK



# JODI FLAT



# EXQUISITE FITTINGS

- Designer flooring with skirting in all rooms
- Exquisite main doors with fancy door fixtures
- Decorative doors for bath & W.C
- French window frame in Granite / Marble
- Branded CP fittings
- Branded sanitary fittings
- Fire fighting system in apartments and lobby





## SUMPTUOUS LIVING

- Concealed electrical & modular switches
- Cable & telephone points
- Modular kitchen with granite platform & stainless steel sink



## ROOMS WITH SPECTACULAR OPULENCE

- Internal Wall with smooth P.O.P Finish
- Loft tank of reputed brand made in each flat
- Full height designer tiles in bathroom & W.C.
- Project designed as per Vastu Shastra
- Powder coated sliding window & tinted glass



*Smit Infra*



*Smit Heights*



A Smiting Experiene



Contact : 7030801222

- Project Approved by:  
Leading Financial Institutes

- Architect:  
Shape Consultants,  
Nallasopara (E).

- RCC Consultant:  
Jai Shree Krishna, Malad.



MAHARERA NO.  
P99000021689

The information contained in the brochure is indicative of the kind of development that is proposed. It is prepared and issued in good faith and is for guidance only. It does not constitute part of an offer or contract. Subject to the approval of the authorities or in the interest of the continuing improvement, the developers reserve the right to alter the layout, plans, specifications or features without prior notice or obligation.