

RAHEJA
RESERVE
OFF NIBM

— FLOOR PLANS —

Where nature begins right outside your doorstep.

Tucked amidst dense greenery lies an Eden conceived from colour, light, fresh air and gleaming with life. Teeming with a variety of fresh hues, pure winds, and comfort that comes naturally.

Raheja Reserve is thoughtfully designed to capture the essence of life in its natural form. Welcome peace into your life with lush greenery and an array of lifestyle conveniences.

- 🐦 2 & 3 bed picturesque residences
- 🐦 Tucked amidst nature, with close proximity to all city conveniences
- 🐦 A warm and happy neighbourhood
- 🐦 The trust of K Raheja and a legacy of 60 years

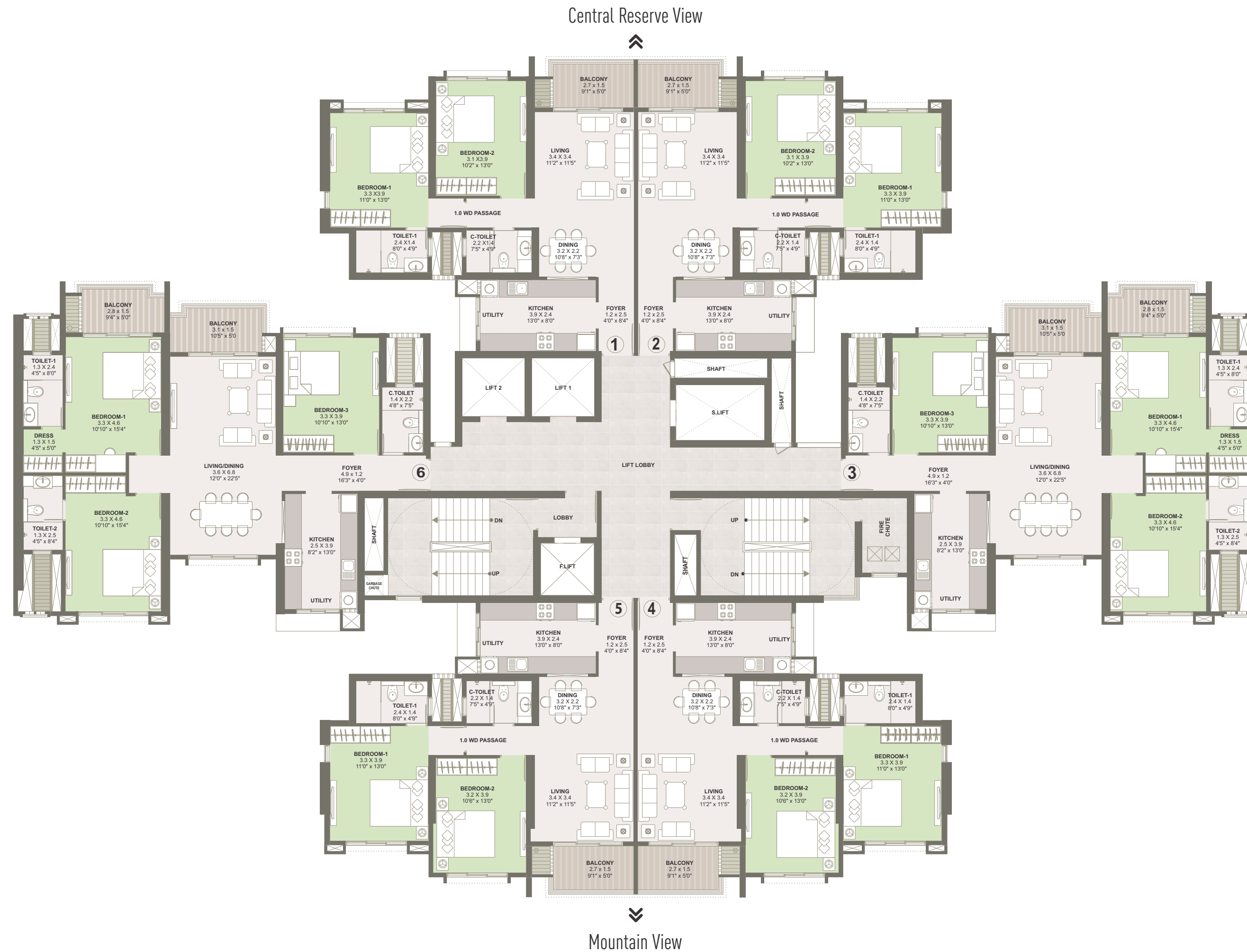


A sanctuary
for many hearts

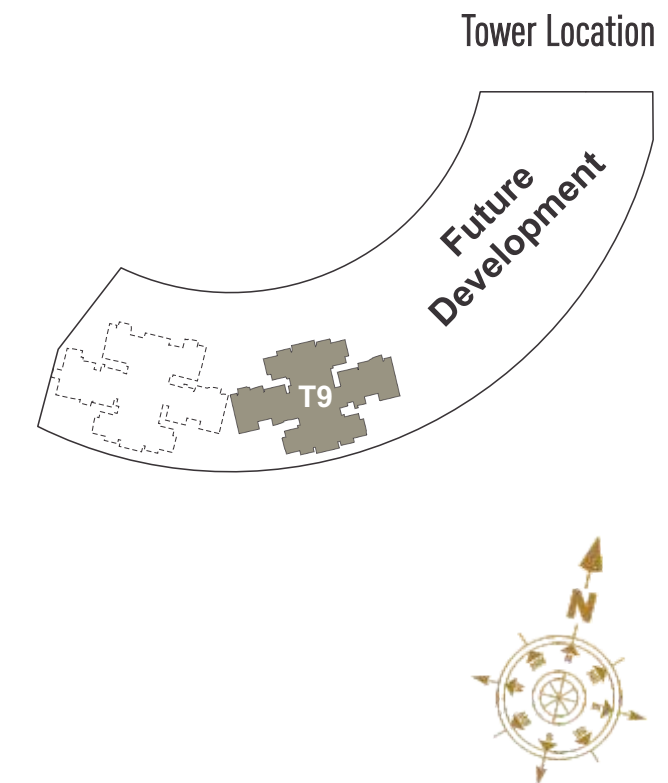


TOWER T9

TYPICAL FLOOR PLAN

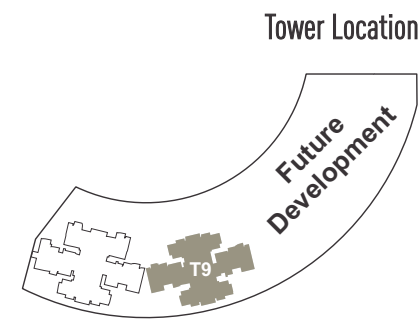
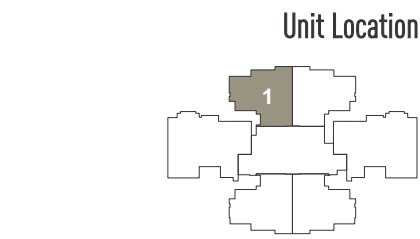
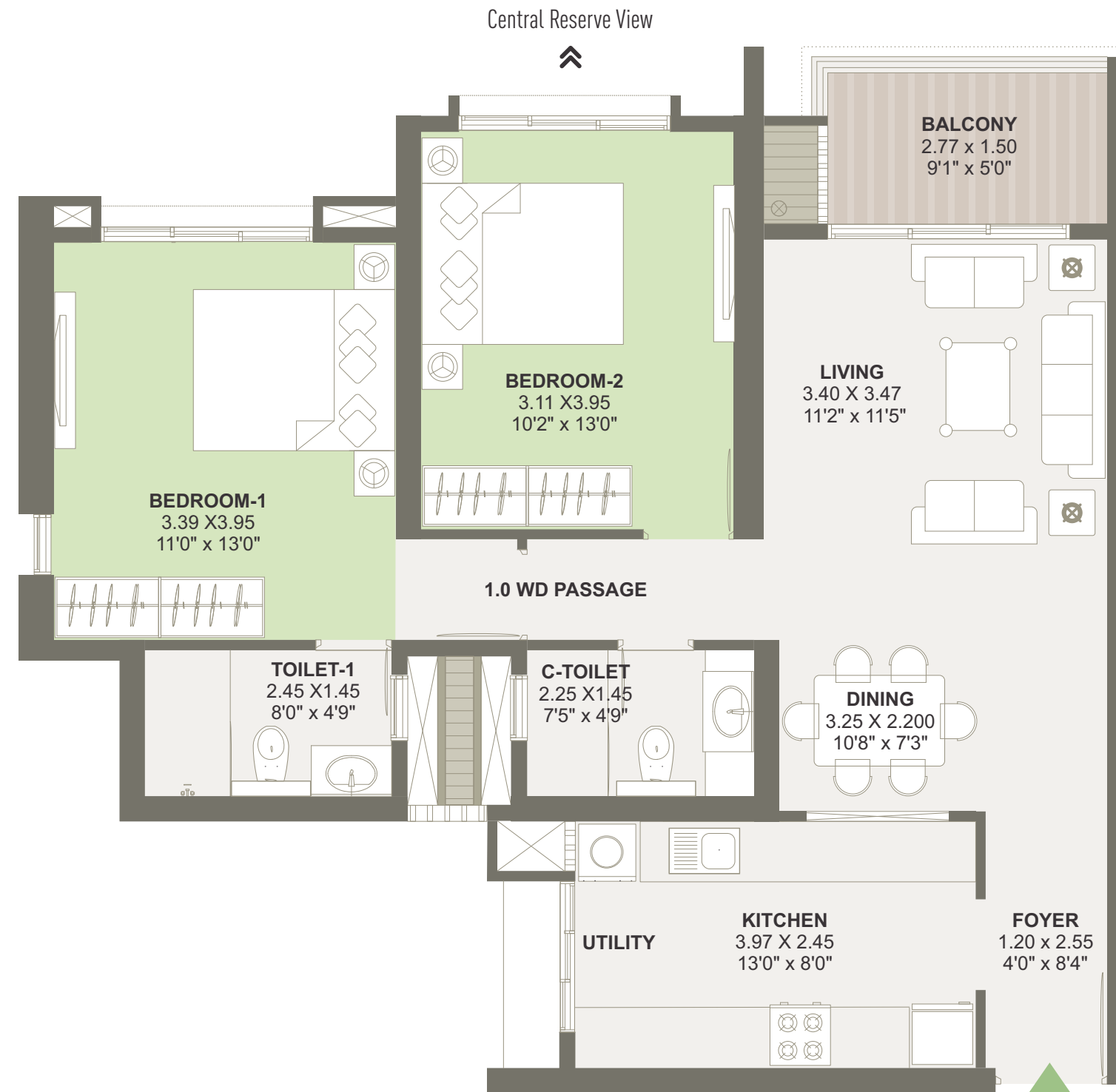


1st - 4th, 6th - 9th, 11th - 14th Floor.



Note: T9 named Chronos & T10 named Supremus (Phase 1 of 'Raheja Reserve' comprising of the Building Nos. T7, T8, T9 & T10) in RV Premiere has been registered via MahaRERA Registration No.: P52100021356 and is available on the website <http://maharera.mahaonline.gov.in> under registered projects. The project named 'Raheja Reserve' is a development by the Promoter/Developer - Inorbit Malls (India) Private Limited (a 'K. Raheja Corp' group co.) and forms part of the development complex named 'Raheja Vistas Premiere'. The dimensions mentioned on the above floor plan are as per the plans approved by Pune Municipal Corporation and the same are subject to construction exigencies. The furniture and features depicted in the above floor plan (same and except fittings and features as may be agreed to be provided) are not part of the standard flat. Details for Phase 1 of Raheja Reserve (T9 & T10) is available for verification at site. All details should be verified prior to acting in relation to this project phase. Phase 1 of Raheja Reserve (T9 & T10) is subject to a mortgage with the Housing Development Finance Corporation and its requisite 'no objection' will be obtained.

TOWER T9 UNIT PLAN 1

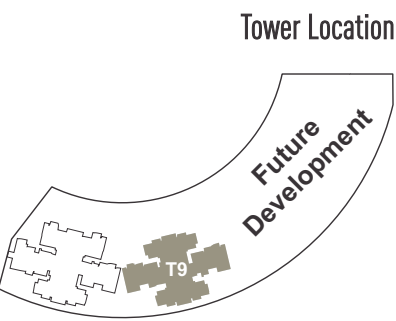
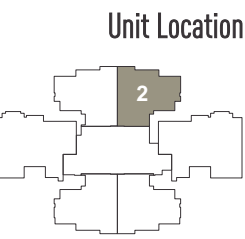
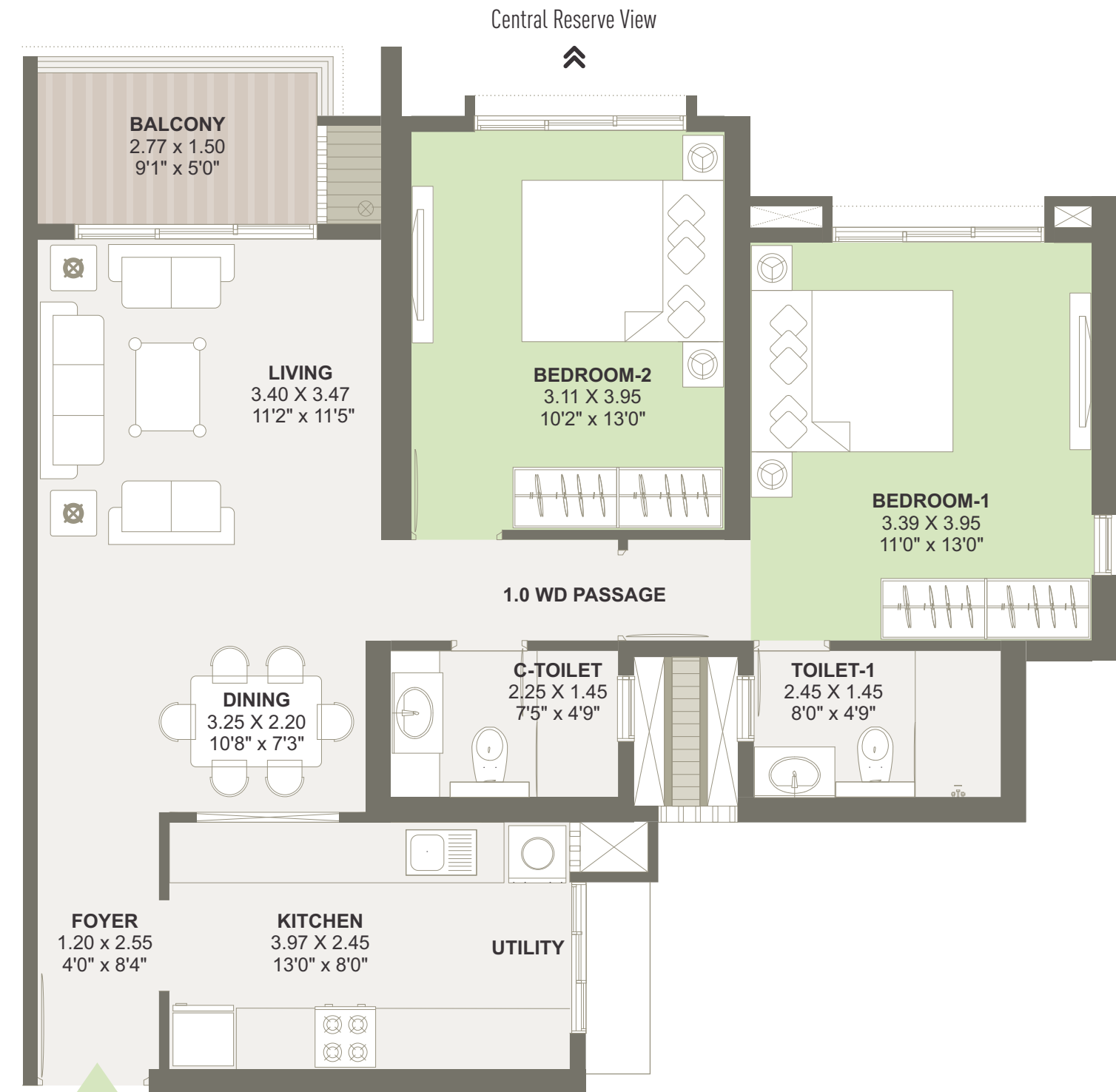


RERA Carpet Area (Sq.mts)	RERA Carpet Area (Sq.ft.)	Balcony Area (Sq.mts)	Balcony Area (Sq.ft.)
72.40	779.30	4.15	44.67

MahaRERA Registration No.: P52100021356. Available on the website <http://maharera.mahaonline.gov.in>

Note: T9 named Chronos & T10 named Supremus (Phase 1 of 'Raheja Reserve' comprising of the Building Nos. T7, T8, T9 & T10) in RV Premiere has been registered via MahaRERA Registration No.: P52100021356 and is available on the website <http://maharera.mahaonline.gov.in> under registered projects. The project named 'Raheja Reserve' is a development by the Promoter/Developer - Inorbit Malls (India) Private Limited (a. 'K. Raheja Corp' group co.) and forms part of the development complex named 'Raheja Vistas Premiere'. The dimensions mentioned on the above floor plan are as per the plans approved by Pune Municipal Corporation and the same are subject to construction exigencies. The furniture and features depicted in the above floor plan (same and except fittings and features as may be agreed to be provided) are not part of the standard flat. Details for Phase 1 of Raheja Reserve (T9 & T10) is available for verification at site. All details should be verified prior to acting in relation to this project phase. Phase 1 of Raheja Reserve (T9 & T10) is subject to a mortgage with the Housing Development Finance Corporation and its requisite 'no objection' will be obtained.

TOWER T9 UNIT PLAN 2



RERA Carpet Area (Sq.mts)	RERA Carpet Area (Sq.ft.)	Balcony Area (Sq.mts)	Balcony Area (Sq.ft.)
72.40	779.30	4.15	44.67

MahaRERA Registration No.: P52100021356. Available on the website <http://maharera.mahaonline.gov.in>

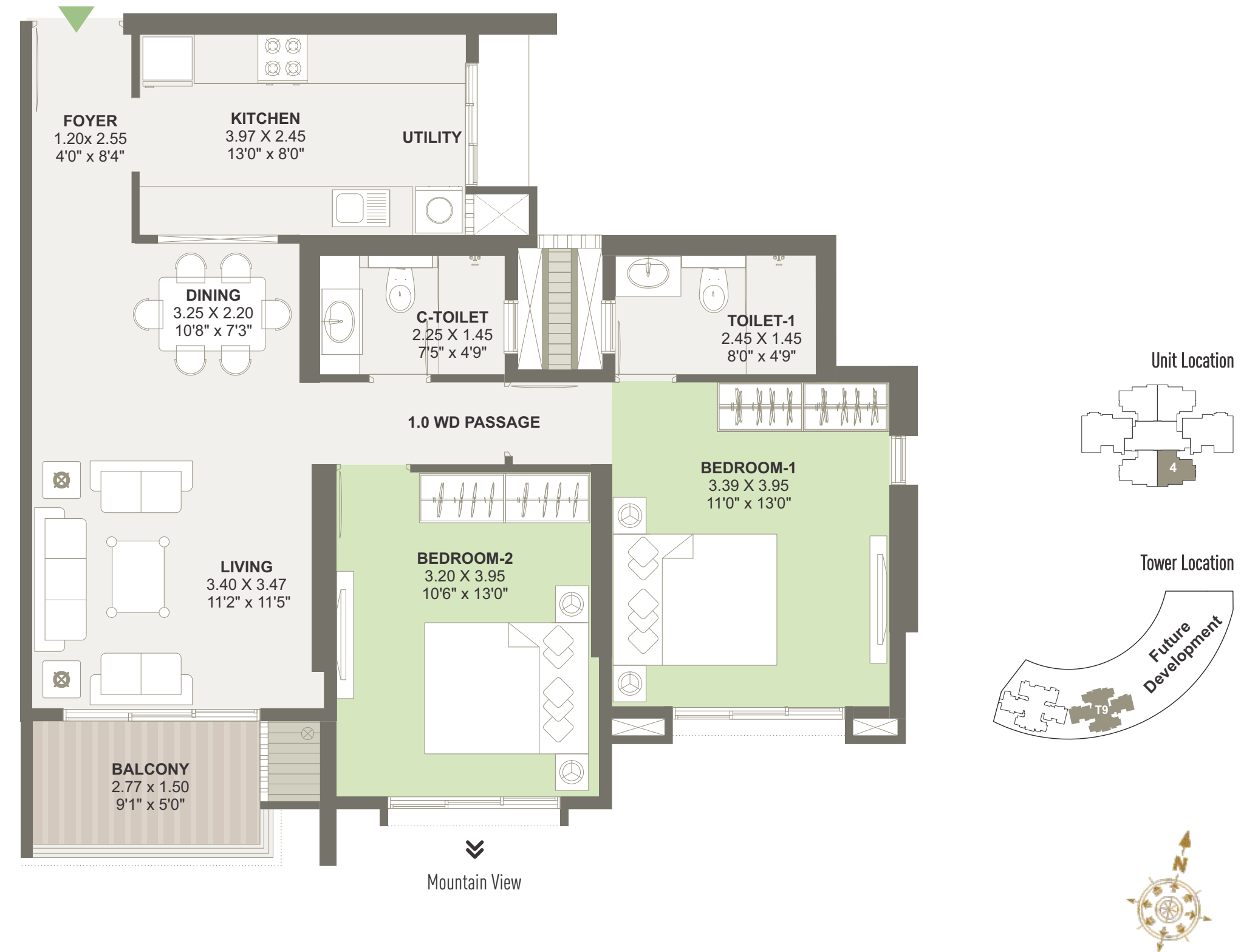
Note: T9 named Chronos & T10 named Supremus (Phase 1 of 'Raheja Reserve' comprising of the Building Nos. T7, T8, T9 & T10) in RV Premiere has been registered via MahaRERA Registration No.: P52100021356 and is available on the website <http://maharera.mahaonline.gov.in> under registered projects. The project named 'Raheja Reserve' is a development by the Promoter/Developer - Inorbit Malls (India) Private Limited (a. 'K. Raheja Corp' group co.) and forms part of the development complex named 'Raheja Vistas Premiere'. The dimensions mentioned on the above floor plan are as per the plans approved by Pune Municipal Corporation and the same are subject to construction exigencies. The furniture and features depicted in the above floor plan (same and except fittings and features as may be agreed to be provided) are not part of the standard flat. Details for Phase 1 of Raheja Reserve (T9 & T10) is available for verification at site. All details should be verified prior to acting in relation to this project phase. Phase 1 of Raheja Reserve (T9 & T10) is subject to a mortgage with the Housing Development Finance Corporation and its requisite 'no objection' will be obtained.

TOWER T9 UNIT PLAN 3



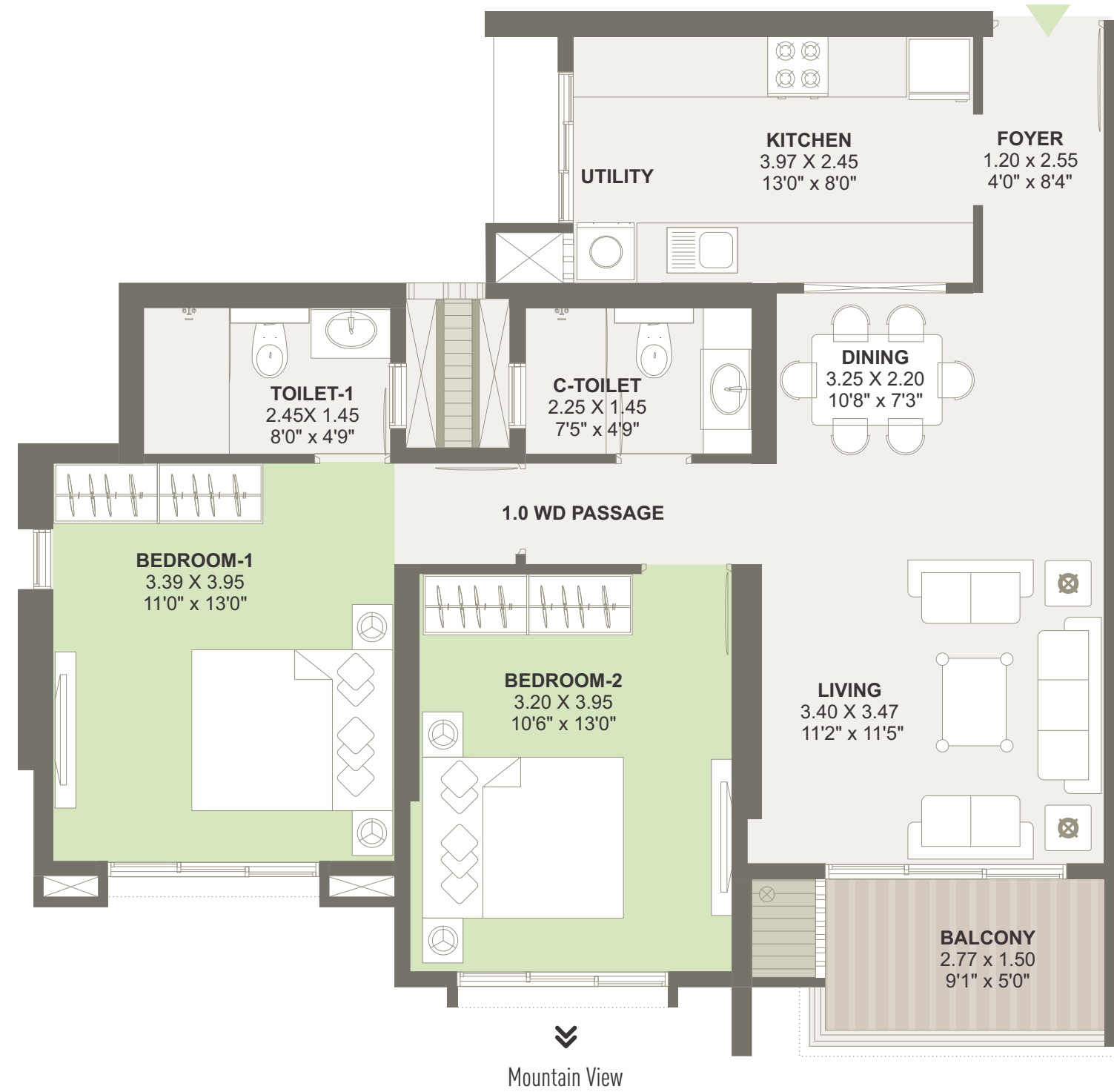
Note: T9 named Chronos & T10 named Supremus (Phase 1 of 'Raheja Reserve' comprising of the Building Nos. T7, T8, T9 & T10) in RV Premiere has been registered via MahaRERA Registration No.: P52100021356 and is available on the website <http://maharera.mahaonline.gov.in> under registered projects. The project named 'Raheja Reserve' is a development by the Promoter/Developer - Inorbit Malls (India) Private Limited (a. 'K. Raheja Corp' group co.) and forms part of the development complex named 'Raheja Vistas Premiere'. The dimensions mentioned on the above floor plan are as per the plans approved by Pune Municipal Corporation and the same are subject to construction exigencies. The furniture and features depicted in the above floor plan (same and except fittings and features as may be agreed to be provided) are not part of the standard flat. Details for Phase 1 of Raheja Reserve (T9 & T10) is available for verification at site. All details should be verified prior to acting in relation to this project phase. Phase 1 of Raheja Reserve (T9 & T10) is subject to a mortgage with the Housing Development Finance Corporation and its requisite 'no objection' will be obtained.

TOWER T9 UNIT PLAN 4



Note: T9 named Chronos & T10 named Supremus (Phase 1 of 'Raheja Reserve' comprising of the Building Nos. T7, T8, T9 & T10) in RV Premiere has been registered via MahaRERA Registration No.: P52100021356 and is available on the website <http://maharera.mahaonline.gov.in> under registered projects. The project named 'Raheja Reserve' is a development by the Promoter/Developer - Inorbit Malls (India) Private Limited (a. 'K. Raheja Corp' group co.) and forms part of the development complex named 'Raheja Vistas Premiere'. The dimensions mentioned on the above floor plan are as per the plans approved by Pune Municipal Corporation and the same are subject to construction exigencies. The furniture and features depicted in the above floor plan (same and except fittings and features as may be agreed to be provided) are not part of the standard flat. Details for Phase 1 of Raheja Reserve (T9 & T10) is available for verification at site. All details should be verified prior to acting in relation to this project phase. Phase 1 of Raheja Reserve (T9 & T10) is subject to a mortgage with the Housing Development Finance Corporation and its requisite 'no objection' will be obtained.

TOWER T9 UNIT PLAN 5

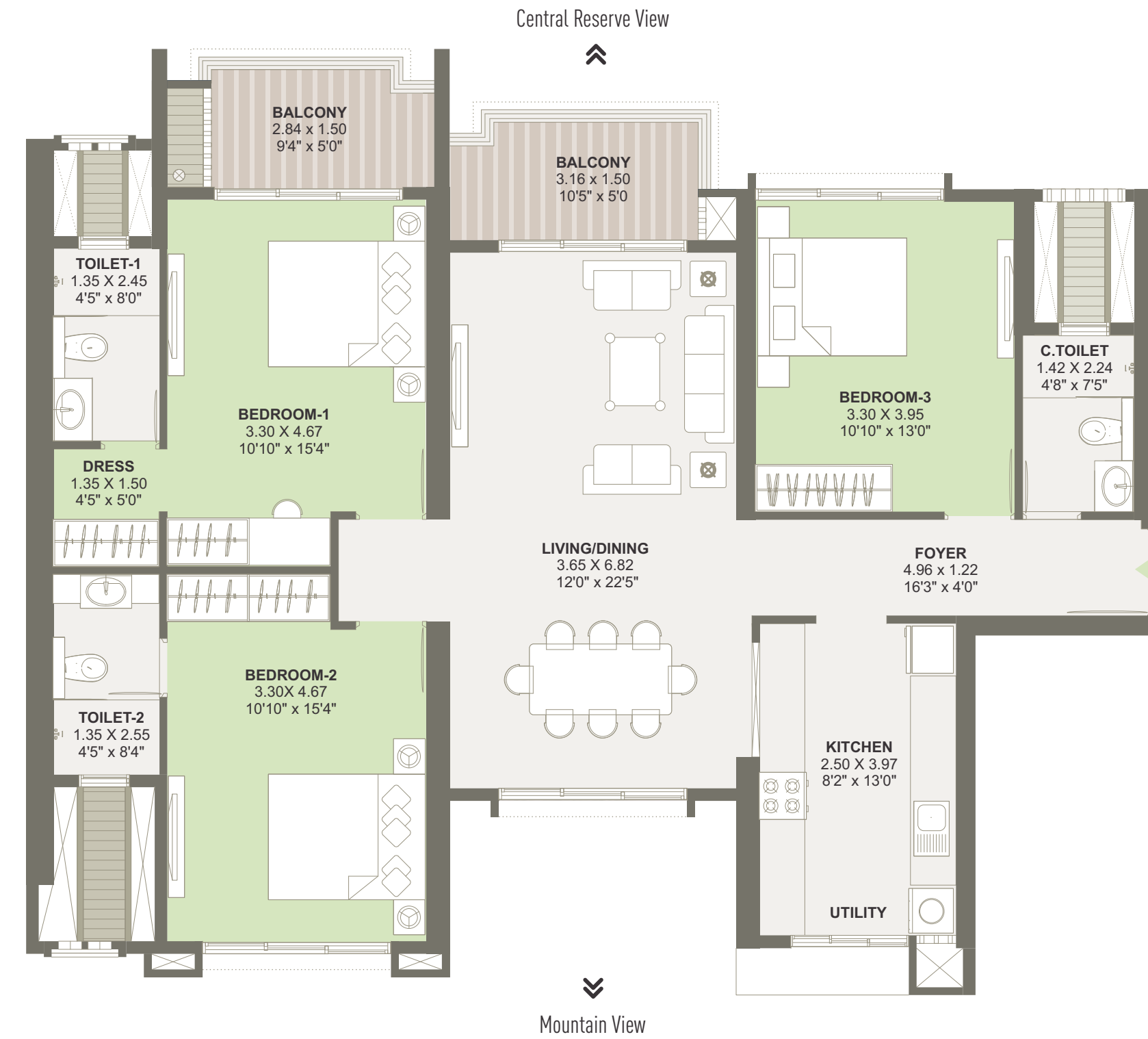


RERA Carpet Area (Sq.mts)	RERA Carpet Area (Sq.ft.)	Balcony Area (Sq.mts)	Balcony Area (Sq.ft.)
72.50	780.38	4.15	44.67

MahaRERA Registration No.: P52100021356. Available on the website <http://maharera.mahaonline.gov.in>

Note: T9 named Chronos & T10 named Supremus (Phase 1 of 'Raheja Reserve' comprising of the Building Nos. T7, T8, T9 & T10) in RV Premiere has been registered via MahaRERA Registration No: P52100021356 and is available on the website <http://maharera.mahaonline.gov.in> under registered projects. The project named 'Raheja Reserve' is a development by the Promoter/Developer - Inorbit Malls (India) Private Limited (a. 'K. Raheja Corp' group co.) and forms part of the development complex named 'Raheja Vistas Premiere'. The dimensions mentioned on the above floor plan are as per the plans approved by Pune Municipal Corporation and the same are subject to construction exigencies. The furniture and features depicted in the above floor plan (same and except fittings and features as may be agreed to be provided) are not part of the standard flat. Details for Phase 1 of Raheja Reserve (T9 & T10) is available for verification at site. All details should be verified prior to acting in relation to this project phase. Phase 1 of Raheja Reserve (T9 & T10) is subject to a mortgage with the Housing Development Finance Corporation and its requisite 'no objection' will be obtained.

TOWER T9 UNIT PLAN 6



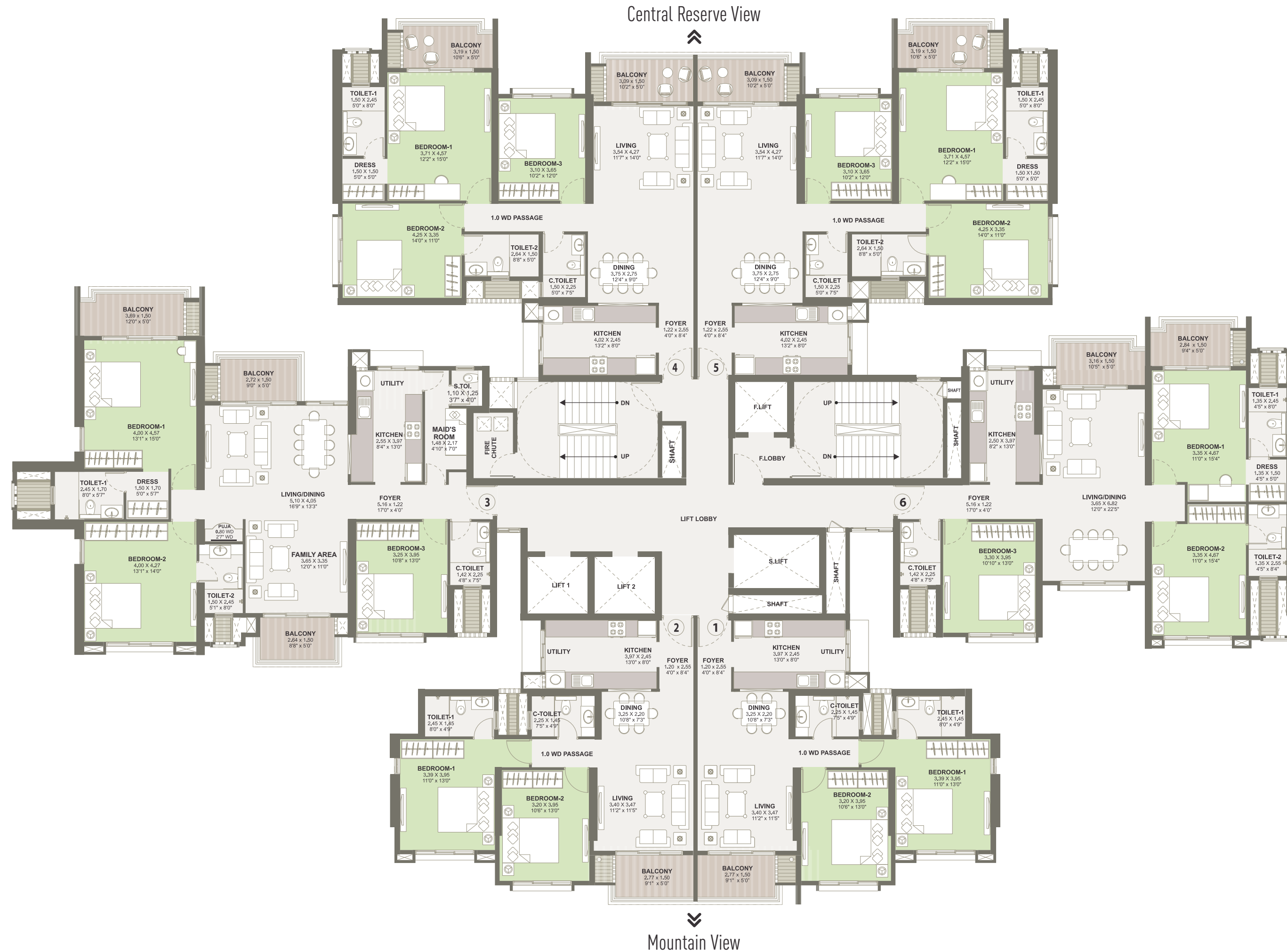
RERA Carpet Area (Sq.mts)	RERA Carpet Area (Sq.ft.)	Balcony Area (Sq.mts)	Balcony Area (Sq.ft.)
104.20	1121.59	8.67	93.32

MahaRERA Registration No.: P52100021356. Available on the website <http://maharera.mahaonline.gov.in>

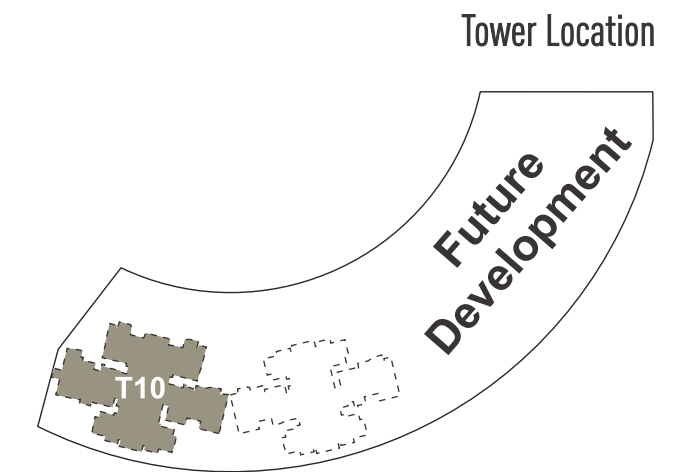
Note: T9 named Chronos & T10 named Supremus (Phase 1 of 'Raheja Reserve' comprising of the Building Nos. T7, T8, T9 & T10) in RV Premiere has been registered via MahaRERA Registration No: P52100021356 and is available on the website <http://maharera.mahaonline.gov.in> under registered projects. The project named 'Raheja Reserve' is a development by the Promoter/Developer - Inorbit Malls (India) Private Limited (a. 'K. Raheja Corp' group co.) and forms part of the development complex named 'Raheja Vistas Premiere'. The dimensions mentioned on the above floor plan are as per the plans approved by Pune Municipal Corporation and the same are subject to construction exigencies. The furniture and features depicted in the above floor plan (same and except fittings and features as may be agreed to be provided) are not part of the standard flat. Details for Phase 1 of Raheja Reserve (T9 & T10) is available for verification at site. All details should be verified prior to acting in relation to this project phase. Phase 1 of Raheja Reserve (T9 & T10) is subject to a mortgage with the Housing Development Finance Corporation and its requisite 'no objection' will be obtained.

TOWER T10

TYPICAL FLOOR PLAN



1st - 4th, 6th - 9th, 11th - 14th Floor.



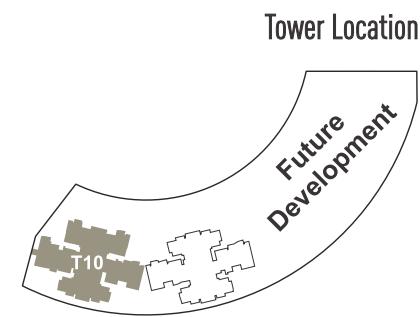
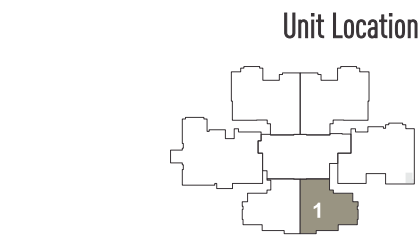
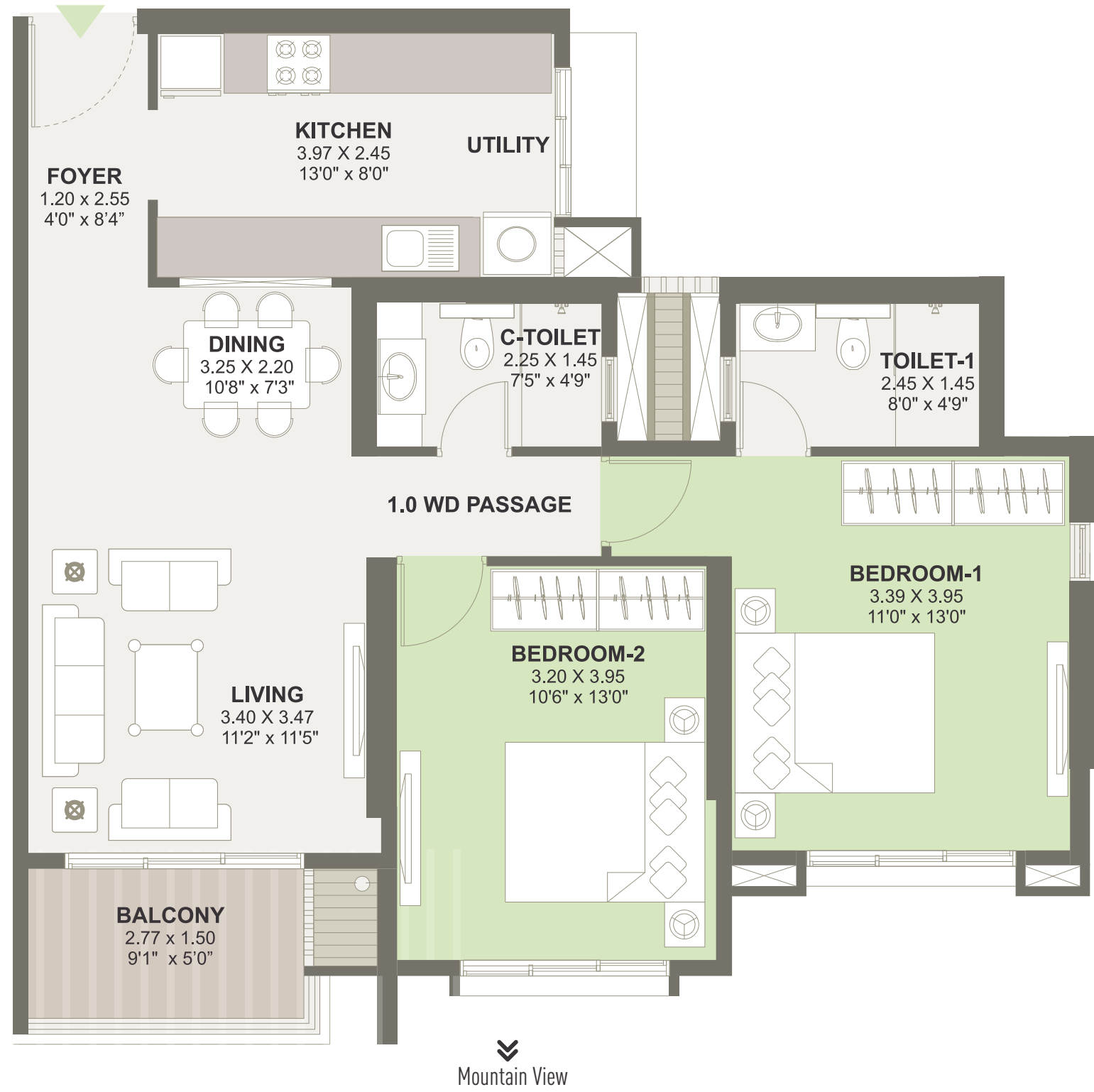
Tower Location

Future Development



Note: T9 named Chronos & T10 named Supremus (Phase 1 of 'Raheja Reserve' comprising of the Building Nos. T7, T8, T9 & T10) in RV Premiere has been registered via MahaRERA Registration No.: P52100021356 and is available on the website <http://maharera.mahaonline.gov.in> under registered projects. The project named 'Raheja Reserve' is a development by the Promoter/Developer - Inorbit Malls (India) Private Limited (a. 'K. Raheja Corp' group co.) and forms part of the development complex named 'Raheja Vistas Premiere'. The dimensions mentioned on the above floor plan are as per the plans approved by Pune Municipal Corporation and the same are subject to construction exigencies. The furniture and features depicted in the above floor plan (same and except fittings and features as may be agreed to be provided) are not part of the standard flat. Details for Phase 1 of Raheja Reserve (T9 & T10) is available for verification at site. All details should be verified prior to acting in relation to this project phase. Phase 1 of Raheja Reserve (T9 & T10) is subject to a mortgage with the Housing Development Finance Corporation and its requisite 'no objection' will be obtained.

TOWER T10 UNIT PLAN 1

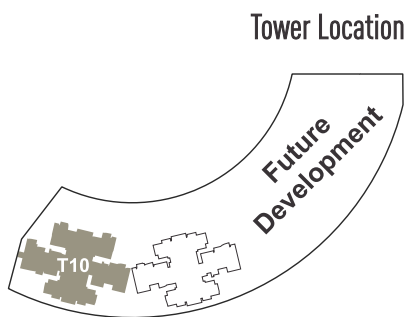
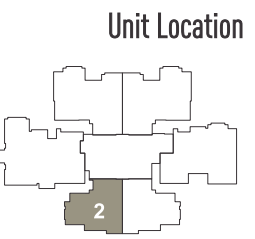
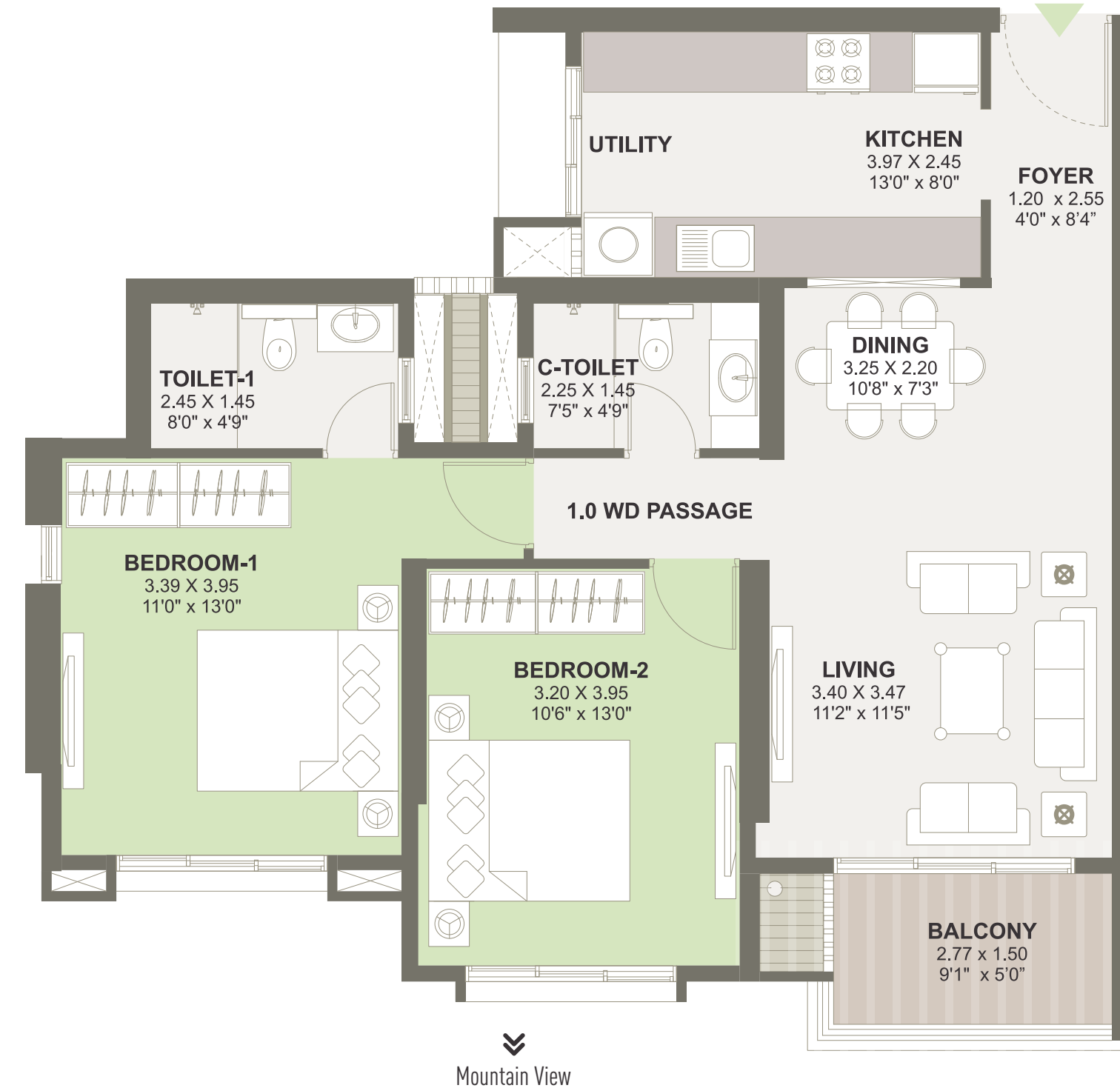


RERA Carpet Area (Sq.mts)	RERA Carpet Area (Sq.ft.)	Balcony Area (Sq.mts)	Balcony Area (Sq.ft.)
72.50	780.38	4.15	44.67

MahaRERA Registration No.: P52100021356. Available on the website <http://maharera.mahaonline.gov.in>

Note: T9 named Chronos & T10 named Supremus (Phase 1 of 'Raheja Reserve' comprising of the Building Nos. T7, T8, T9 & T10) in RV Premiere has been registered via MahaRERA Registration No: P52100021356 and is available on the website <http://maharera.mahaonline.gov.in> under registered projects. The project named 'Raheja Reserve' is a development by the Promoter/Developer - Inorbit Malls (India) Private Limited (a. 'K. Raheja Corp' group co.) and forms part of the development complex named 'Raheja Vistas Premiere'. The dimensions mentioned on the above floor plan are as per the plans approved by Pune Municipal Corporation and the same are subject to construction exigencies. The furniture and features depicted in the above floor plan (same and except fittings and features as may be agreed to be provided) are not part of the standard flat. Details for Phase 1 of Raheja Reserve (T9 & T10) is available for verification at site. All details should be verified prior to acting in relation to this project phase. Phase 1 of Raheja Reserve (T9 & T10) is subject to a mortgage with the Housing Development Finance Corporation and its requisite 'no objection' will be obtained.

TOWER T10 UNIT PLAN 2



RERA Carpet Area (Sq.mts)	RERA Carpet Area (Sq.ft.)	Balcony Area (Sq.mts)	Balcony Area (Sq.ft.)
72.50	780.38	4.15	44.67

MahaRERA Registration No.: P52100021356. Available on the website <http://maharera.mahaonline.gov.in>

Note: T9 named Chronos & T10 named Supremus (Phase 1 of 'Raheja Reserve' comprising of the Building Nos. T7, T8, T9 & T10) in RV Premiere has been registered via MahaRERA Registration No: P52100021356 and is available on the website <http://maharera.mahaonline.gov.in> under registered projects. The project named 'Raheja Reserve' is a development by the Promoter/Developer - Inorbit Malls (India) Private Limited (a. 'K. Raheja Corp' group co.) and forms part of the development complex named 'Raheja Vistas Premiere'. The dimensions mentioned on the above floor plan are as per the plans approved by Pune Municipal Corporation and the same are subject to construction exigencies. The furniture and features depicted in the above floor plan (same and except fittings and features as may be agreed to be provided) are not part of the standard flat. Details for Phase 1 of Raheja Reserve (T9 & T10) is available for verification at site. All details should be verified prior to acting in relation to this project phase. Phase 1 of Raheja Reserve (T9 & T10) is subject to a mortgage with the Housing Development Finance Corporation and its requisite 'no objection' will be obtained.

TOWER T10 UNIT PLAN 3

Central Reserve View
↑



Mountain View
↓

RERA Carpet Area (Sq.mts)	RERA Carpet Area (Sq.ft.)	Balcony Area (Sq.mts)	Balcony Area (Sq.ft.)
128.00	1377.77	13.42	144.45

MahaRERA Registration No.: P52100021356. Available on the website <http://maharera.mahaonline.gov.in>

Note: T9 named Chronos & T10 named Supremus (Phase 1 of 'Raheja Reserve' comprising of the Building Nos. T7, T8, T9 & T10) in RV Premiere has been registered via MahaRERA Registration No: P52100021356 and is available on the website <http://maharera.mahaonline.gov.in> under registered projects. The project named 'Raheja Reserve' is a development by the Promoter/Developer - Inorbit Malls (India) Private Limited (a. 'K. Raheja Corp' group co.) and forms part of the development complex named 'Raheja Vistas Premiere'. The dimensions mentioned on the above floor plan are as per the plans approved by Pune Municipal Corporation and the same are subject to construction exigencies. The furniture and features depicted in the above floor plan (same and except fittings and features as may be agreed to be provided) are not part of the standard flat. Details for Phase 1 of Raheja Reserve (T9 & T10) is available for verification at site. All details should be verified prior to acting in relation to this project phase. Phase 1 of Raheja Reserve (T9 & T10) is subject to a mortgage with the Housing Development Finance Corporation and its requisite 'no objection' will be obtained.

TOWER T10 UNIT PLAN 4

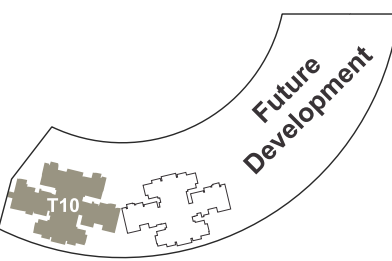
Central Reserve View
↑



Unit Location



Tower Location



RERA Carpet Area (Sq.mts)	RERA Carpet Area (Sq.ft.)	Balcony Area (Sq.mts)	Balcony Area (Sq.ft.)
105.52	1135.80	9.26	99.67

MahaRERA Registration No.: P52100021356. Available on the website <http://maharera.mahaonline.gov.in>

Note: T9 named Chronos & T10 named Supremus (Phase 1 of 'Raheja Reserve' comprising of the Building Nos. T7, T8, T9 & T10) in RV Premiere has been registered via MahaRERA Registration No: P52100021356 and is available on the website <http://maharera.mahaonline.gov.in> under registered projects. The project named 'Raheja Reserve' is a development by the Promoter/Developer - Inorbit Malls (India) Private Limited (a. 'K. Raheja Corp' group co.) and forms part of the development complex named 'Raheja Vistas Premiere'. The dimensions mentioned on the above floor plan are as per the plans approved by Pune Municipal Corporation and the same are subject to construction exigencies. The furniture and features depicted in the above floor plan (same and except fittings and features as may be agreed to be provided) are not part of the standard flat. Details for Phase 1 of Raheja Reserve (T9 & T10) is available for verification at site. All details should be verified prior to acting in relation to this project phase. Phase 1 of Raheja Reserve (T9 & T10) is subject to a mortgage with the Housing Development Finance Corporation and its requisite 'no objection' will be obtained.

TOWER T10 UNIT PLAN 5

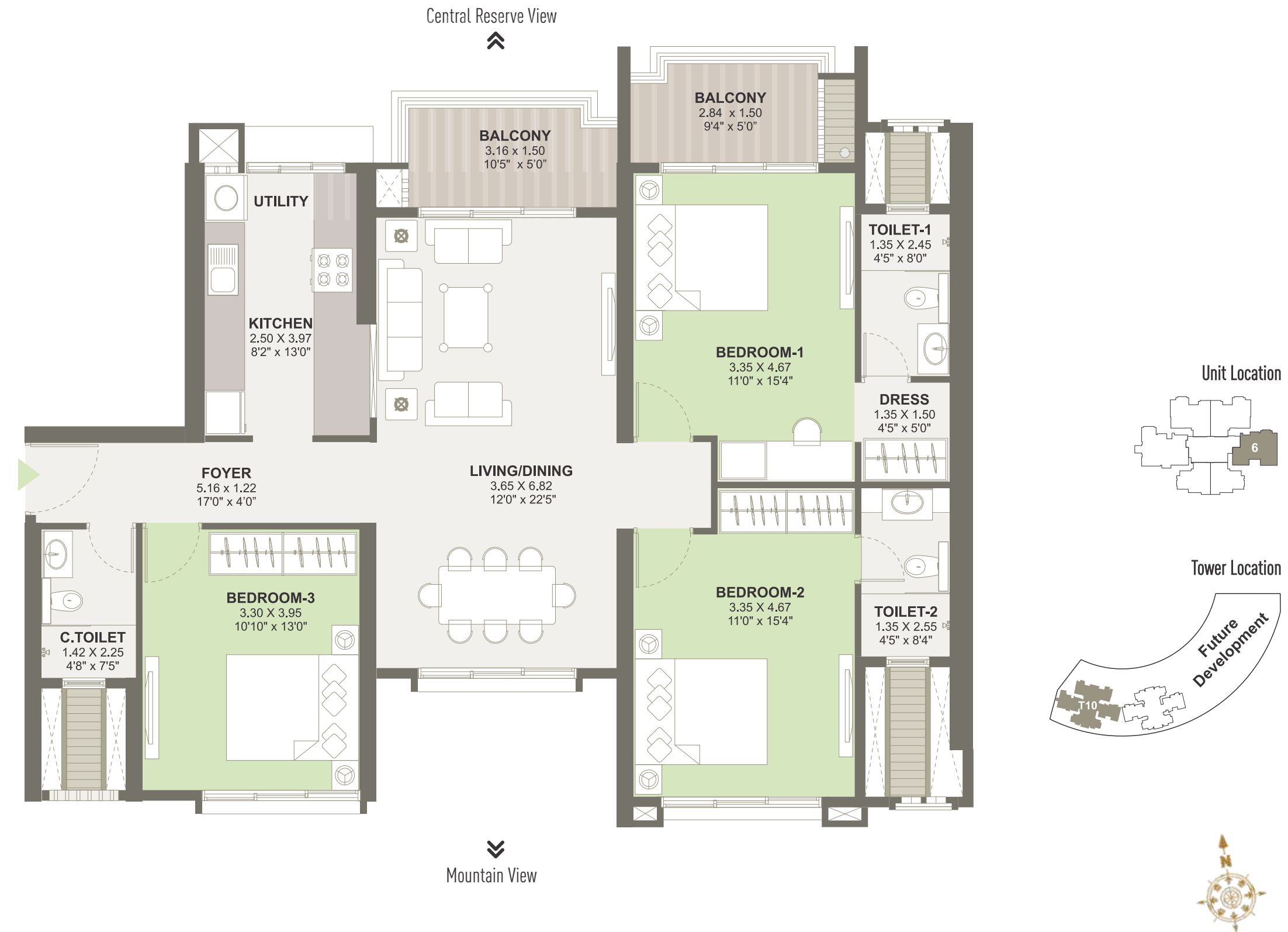


RERA Carpet Area (Sq.mts)	RERA Carpet Area (Sq.ft.)	Balcony Area (Sq.mts)	Balcony Area (Sq.ft.)
105.52	1135.80	9.26	99.67

MahaRERA Registration No.: P52100021356. Available on the website <http://maharera.mahaonline.gov.in>

Note: T9 named Chronos & T10 named Supremus (Phase 1 of 'Raheja Reserve' comprising of the Building Nos. T7, T8, T9 & T10) in RV Premiere has been registered via MahaRERA Registration No: P52100021356 and is available on the website <http://maharera.mahaonline.gov.in> under registered projects. The project named 'Raheja Reserve' is a development by the Promoter/Developer - Inorbit Malls (India) Private Limited (a. 'K. Raheja Corp' group co.) and forms part of the development complex named "Raheja Vistas Premiere". The dimensions mentioned on the above floor plan are as per the plans approved by Pune Municipal Corporation and the same are subject to construction exigencies. The furniture and features depicted in the above floor plan (same and except fittings and features as may be agreed to be provided) are not part of the standard flat. Details for Phase 1 of Raheja Reserve (T9 & T10) is available for verification at site. All details should be verified prior to acting in relation to this project phase. Phase 1 of Raheja Reserve (T9 & T10) is subject to a mortgage with the Housing Development Finance Corporation and its requisite 'no objection' will be obtained.

TOWER T10 UNIT PLAN 6



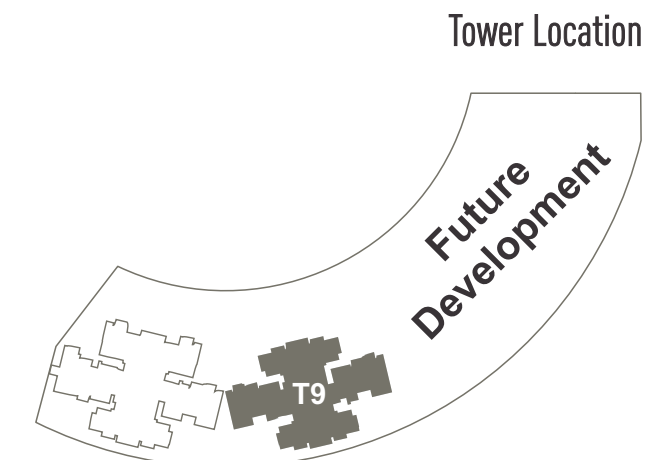
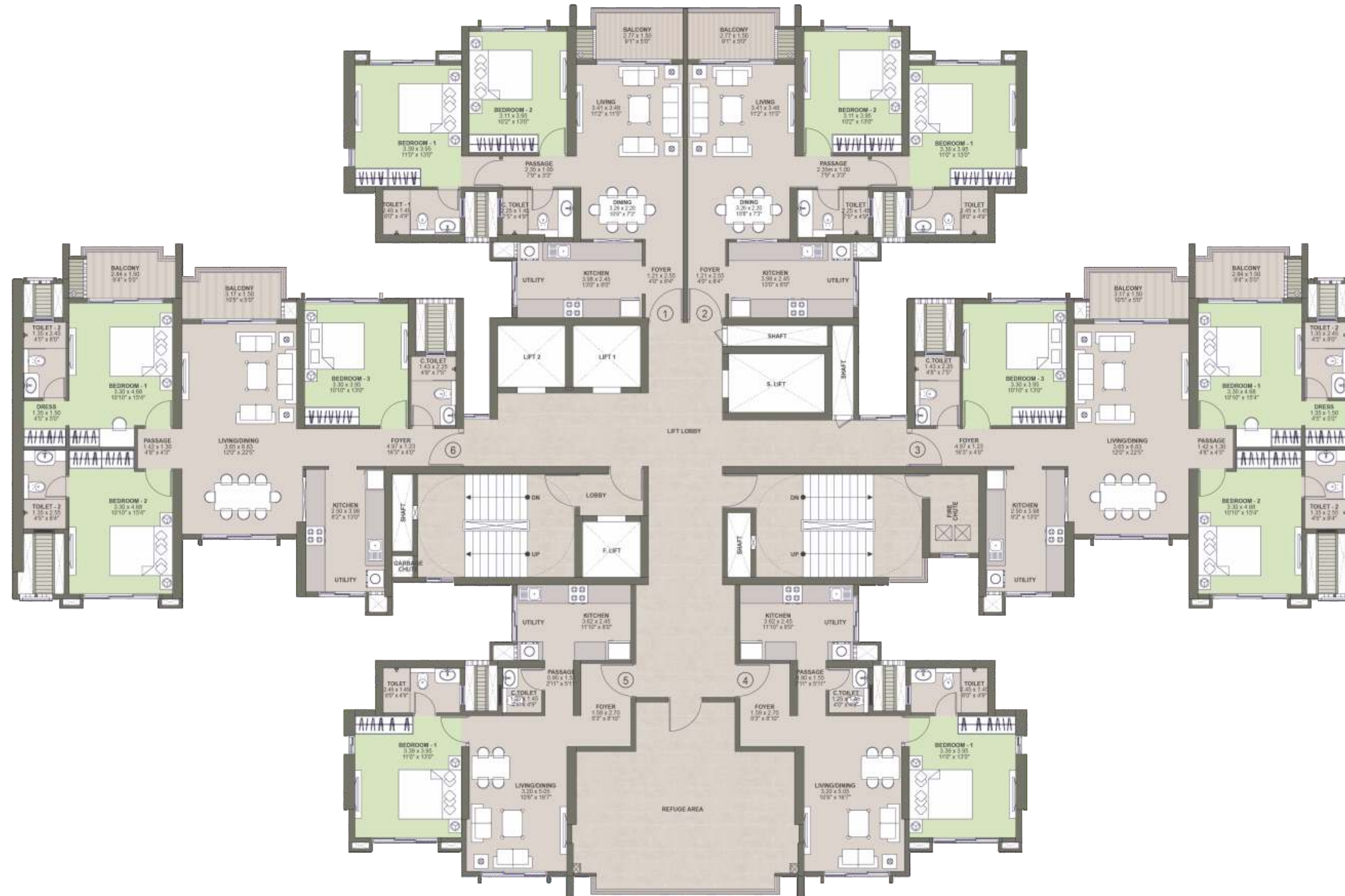
RERA Carpet Area (Sq.mts)	RERA Carpet Area (Sq.ft.)	Balcony Area (Sq.mts)	Balcony Area (Sq.ft.)
103.55	1114.59	8.67	93.32

MahaRERA Registration No.: P52100021356. Available on the website <http://maharera.mahaonline.gov.in>

Note: T9 named Chronos & T10 named Supremus (Phase 1 of 'Raheja Reserve' comprising of the Building Nos. T7, T8, T9 & T10) in RV Premiere has been registered via MahaRERA Registration No: P52100021356 and is available on the website <http://maharera.mahaonline.gov.in> under registered projects. The project named 'Raheja Reserve' is a development by the Promoter/Developer - Inorbit Malls (India) Private Limited (a. 'K. Raheja Corp' group co.) and forms part of the development complex named "Raheja Vistas Premiere". The dimensions mentioned on the above floor plan are as per the plans approved by Pune Municipal Corporation and the same are subject to construction exigencies. The furniture and features depicted in the above floor plan (same and except fittings and features as may be agreed to be provided) are not part of the standard flat. Details for Phase 1 of Raheja Reserve (T9 & T10) is available for verification at site. All details should be verified prior to acting in relation to this project phase. Phase 1 of Raheja Reserve (T9 & T10) is subject to a mortgage with the Housing Development Finance Corporation and its requisite 'no objection' will be obtained.

TOWER T9

REFUGE FLOOR PLAN



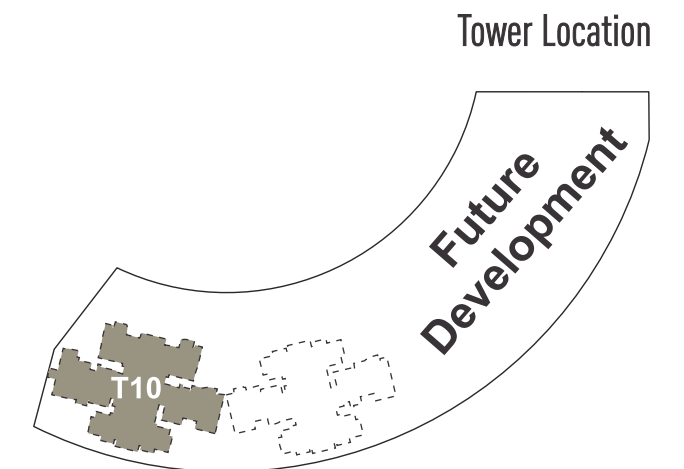
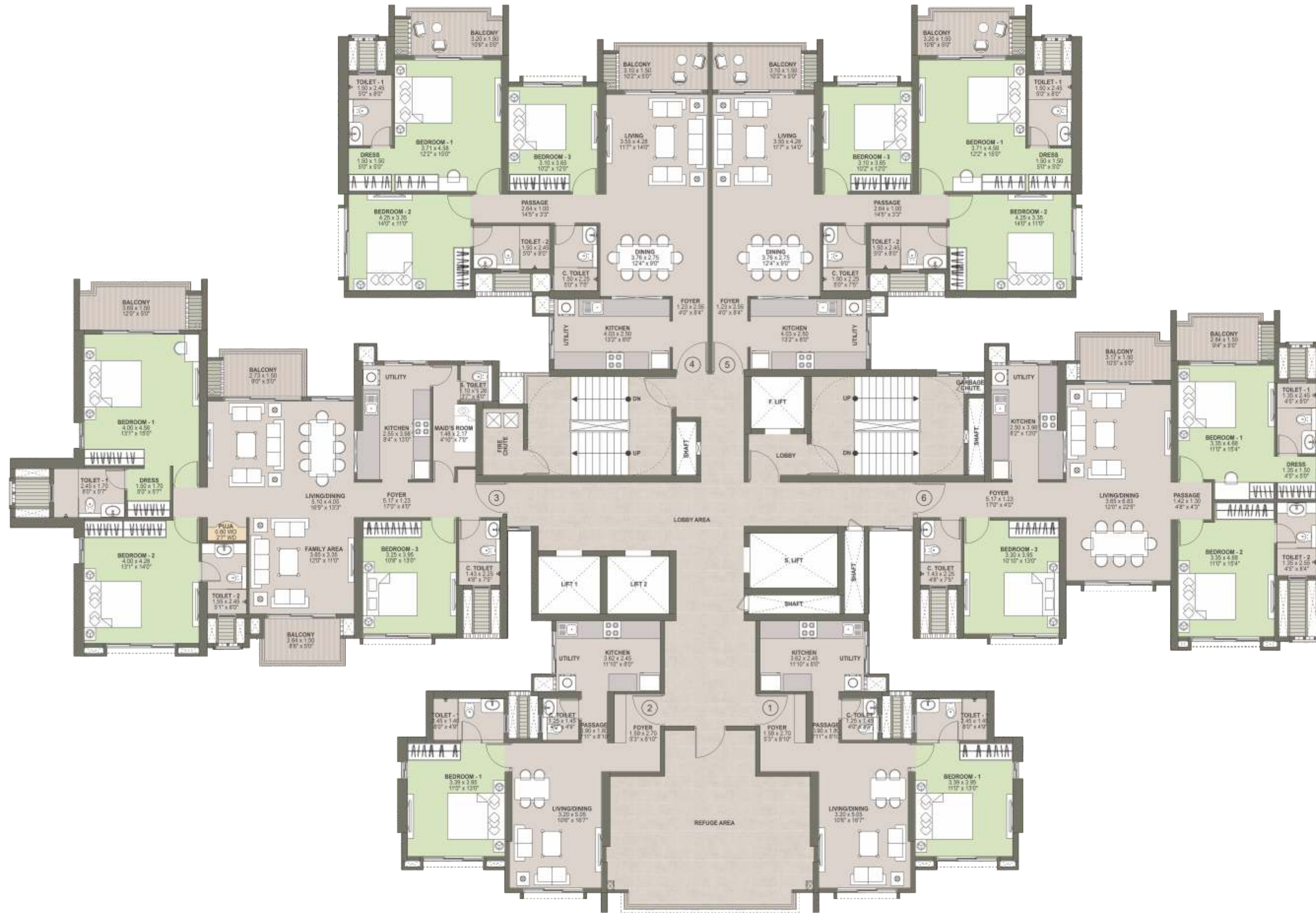
5th, 10th, 15th Floor.

MahaRERA Registration No: P52100021356 Available on the website <http://maharera.mahaonline.gov.in>

Note: T9 named Chronos & T10 named Supremus (Phase 1 of 'Raheja Reserve' comprising of the Building Nos. T7, T8, T9 & T10) in RV Premiere has been registered via MahaRERA Registration No: P52100021356 and is available on the website <http://maharera.mahaonline.gov.in> under registered projects. The project named 'Raheja Reserve' is a development by the Promoter/Developer - Inorbit Malls (India) Private Limited (a 'K. Raheja Corp' group co.) and forms part of the development complex named "Raheja Vistas Premiere". The dimensions mentioned on the above floor plan are as per the plans approved by Pune Municipal Corporation and the same are subject to construction exigencies. The furniture and features depicted in the above floor plan (same and except fittings and features as may be agreed to be provided) are not part of the standard flat. Details for Phase 1 of Raheja Reserve (T9 & T10) is available for verification at site. All details should be verified prior to acting in relation to this project phase. Phase 1 of Raheja Reserve (T9 & T10) is subject to a mortgage with the Housing Development Finance Corporation and its requisite 'no objection' will be obtained.

TOWER T10

REFUGE FLOOR PLAN



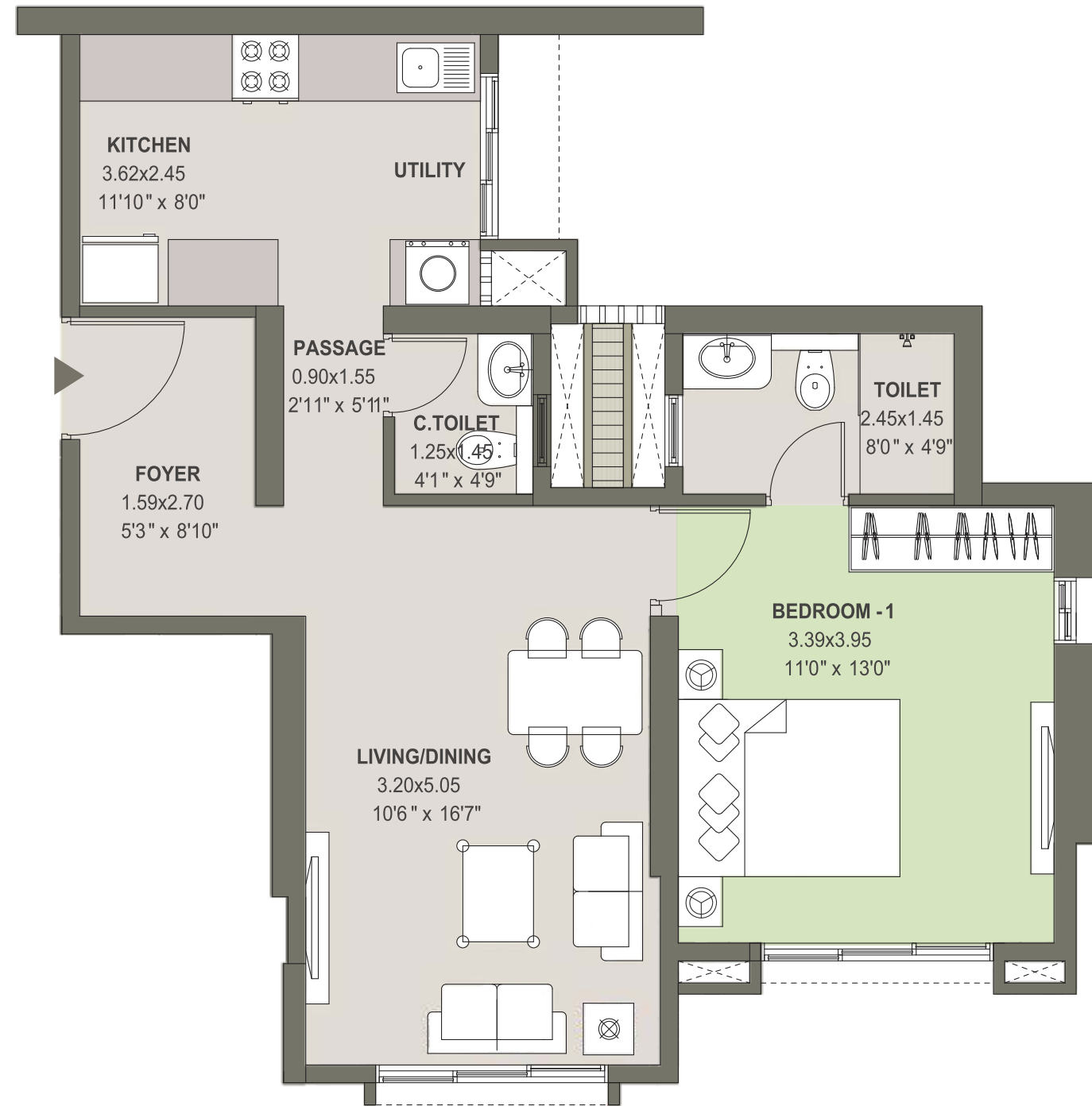
5th, 10th, 15th Floor.

MahaRERA Registration No: P52100021356 Available on the website <http://maharera.mahaonline.gov.in>

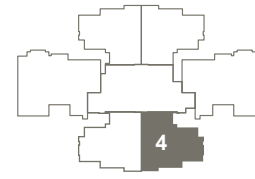
Note: T9 named Chronos & T10 named Supremus (Phase 1 of 'Raheja Reserve' comprising of the Building Nos. T7, T8, T9 & T10) in RV Premiere has been registered via MahaRERA Registration No: P52100021356 and is available on the website <http://maharera.mahaonline.gov.in> under registered projects. The project named 'Raheja Reserve' is a development by the Promoter/Developer - Inorbit Malls (India) Private Limited (a 'K. Raheja Corp' group co.) and forms part of the development complex named "Raheja Vistas Premiere". The dimensions mentioned on the above floor plan are as per the plans approved by Pune Municipal Corporation and the same are subject to construction exigencies. The furniture and features depicted in the above floor plan (same and except fittings and features as may be agreed to be provided) are not part of the standard flat. Details for Phase 1 of Raheja Reserve (T9 & T10) is available for verification at site. All details should be verified prior to acting in relation to this project phase. Phase 1 of Raheja Reserve (T9 & T10) is subject to a mortgage with the Housing Development Finance Corporation and its requisite 'no objection' will be obtained.

TOWER T9 & T10 Refuge Floors

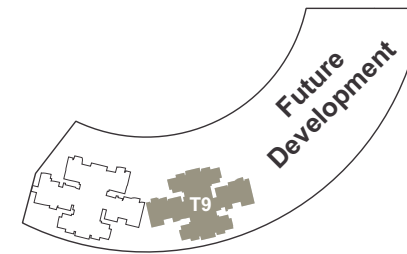
Unit 4 (T9) & Unit 1 (T10)



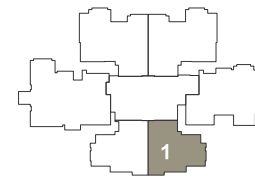
Unit Location



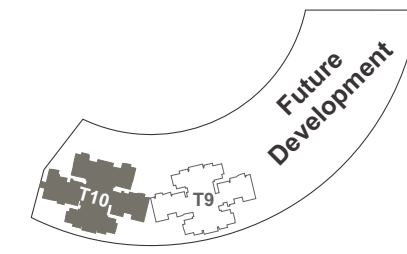
Tower Location



Unit Location



Tower Location



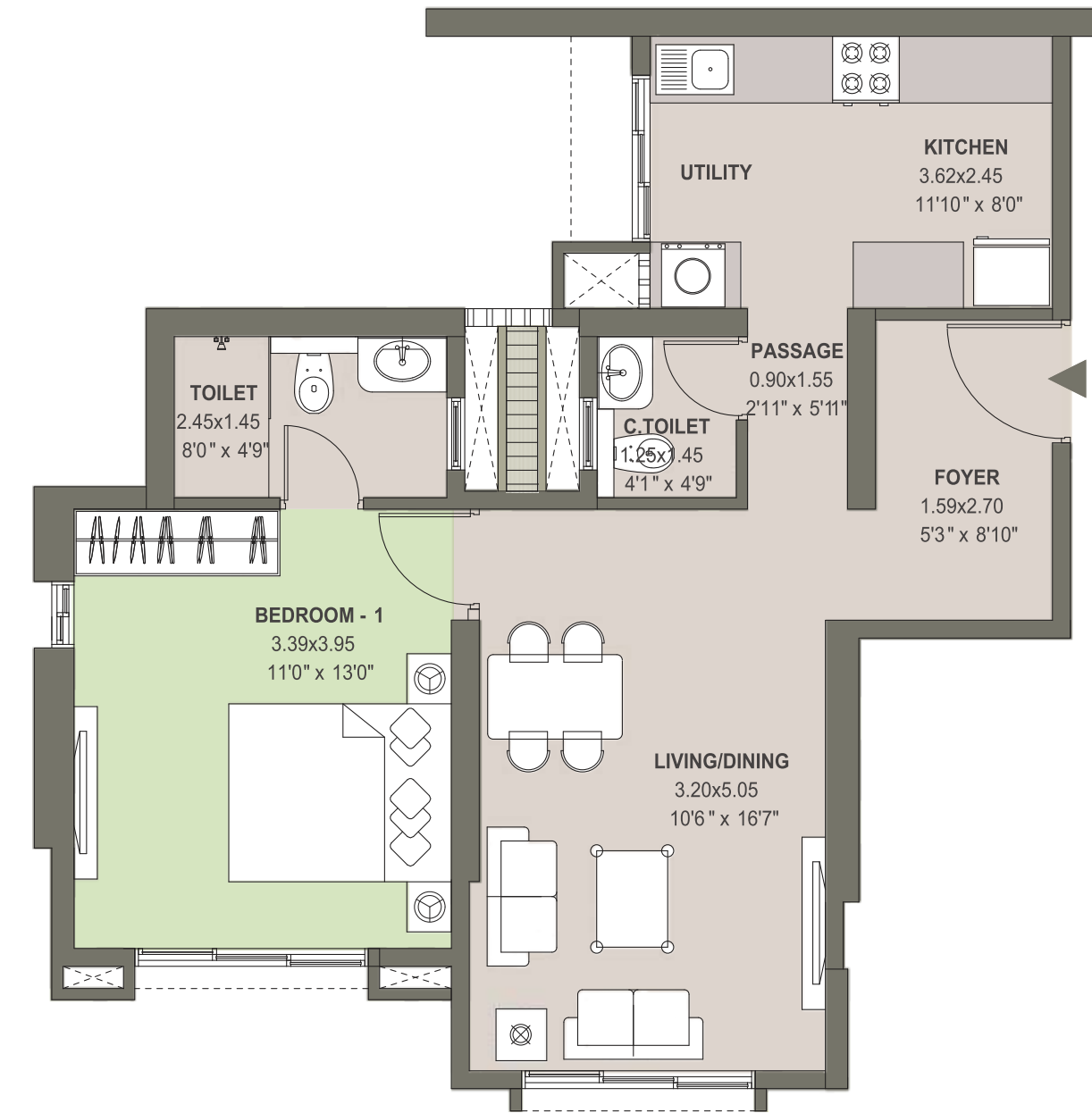
RERA Carpet Area (Sq. mts)	RERA Carpet Area (Sq.ft)	Balcony Area (Sq. mts)	Balcony Area (Sq.ft)
52.29	562.85	-	-

MahaRERA Registration No.: P52100021356. Available on the website <http://maharera.mahaonline.gov.in>

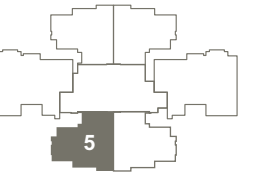
Note: T9 named Chronos & T10 named Supremus (Phase 1 of 'Raheja Reserve' comprising of the Building Nos. T7, T8, T9 & T10) in RV Premiere has been registered via MahaRERA Registration No: P52100021356 and is available on the website <http://maharera.mahaonline.gov.in> under registered projects. The project named 'Raheja Reserve' is a development by the Promoter/Developer - Inorbit Malls (India) Private Limited (a. 'K. Raheja Corp' group co.) and forms part of the development complex named 'Raheja Vistas Premiere'. The dimensions mentioned on the above floor plan are as per the plans approved by Pune Municipal Corporation and the same are subject to construction exigencies. The furniture and features depicted in the above floor plan (same and except fittings and features as maybe agreed to be provided) are not part of the standard flat. Details for Phase 1 of Raheja Reserve (T9 & T10) is available for verification at site. All details should be verified prior to acting in relation to this project phase. Phase 1 of Raheja Reserve (T9 & T10) is subject to a mortgage with the Housing Development Finance Corporation and its requisite 'no objection' will be obtained.

TOWER T9 & T10 Refuge Floors

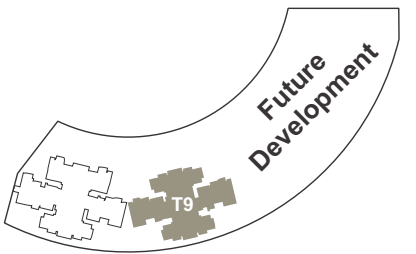
Unit 5 (T9) & Unit 2 (T10)



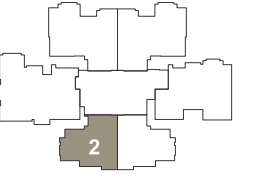
Unit Location



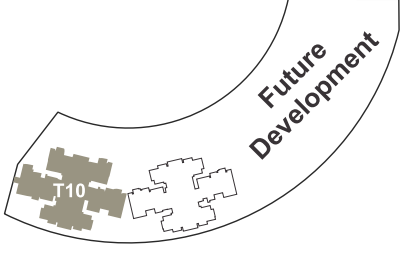
Tower Location



Unit Location



Tower Location



RERA Carpet Area (Sq.mts)	RERA Carpet Area (Sq.ft.)	Balcony Area (Sq.mts)	Balcony Area (Sq.ft.)
52.29	562.85	-	-

MahaRERA Registration No.: P52100021356. Available on the website <http://maharera.mahaonline.gov.in>

Note: T9 named Chronos & T10 named Supremus (Phase 1 of 'Raheja Reserve' comprising of the Building Nos. T7, T8, T9 & T10) in RV Premiere has been registered via MahaRERA Registration No: P52100021356 and is available on the website <http://maharera.mahaonline.gov.in> under registered projects. The project named 'Raheja Reserve' is a development by the Promoter/Developer - Inorbit Malls (India) Private Limited (a. 'K. Raheja Corp' group co.) and forms part of the development complex named 'Raheja Vistas Premiere'. The dimensions mentioned on the above floor plan are as per the plans approved by Pune Municipal Corporation and the same are subject to construction exigencies. The furniture and features depicted in the above floor plan (same and except fittings and features as maybe agreed to be provided) are not part of the standard flat. Details for Phase 1 of Raheja Reserve (T9 & T10) is available for verification at site. All details should be verified prior to acting in relation to this project phase. Phase 1 of Raheja Reserve (T9 & T10) is subject to a mortgage with the Housing Development Finance Corporation and its requisite 'no objection' will be obtained.

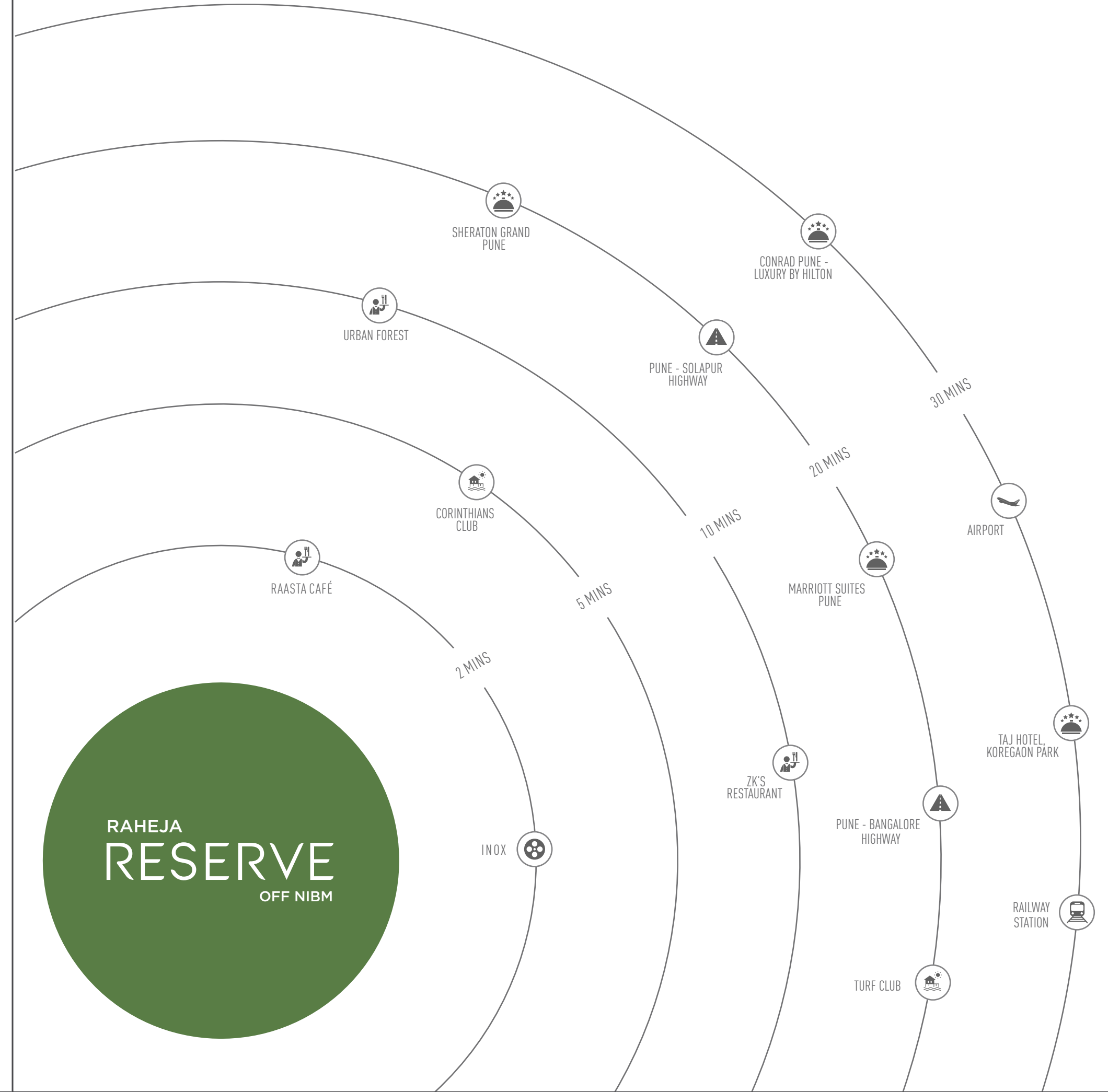
A unique life amidst nature

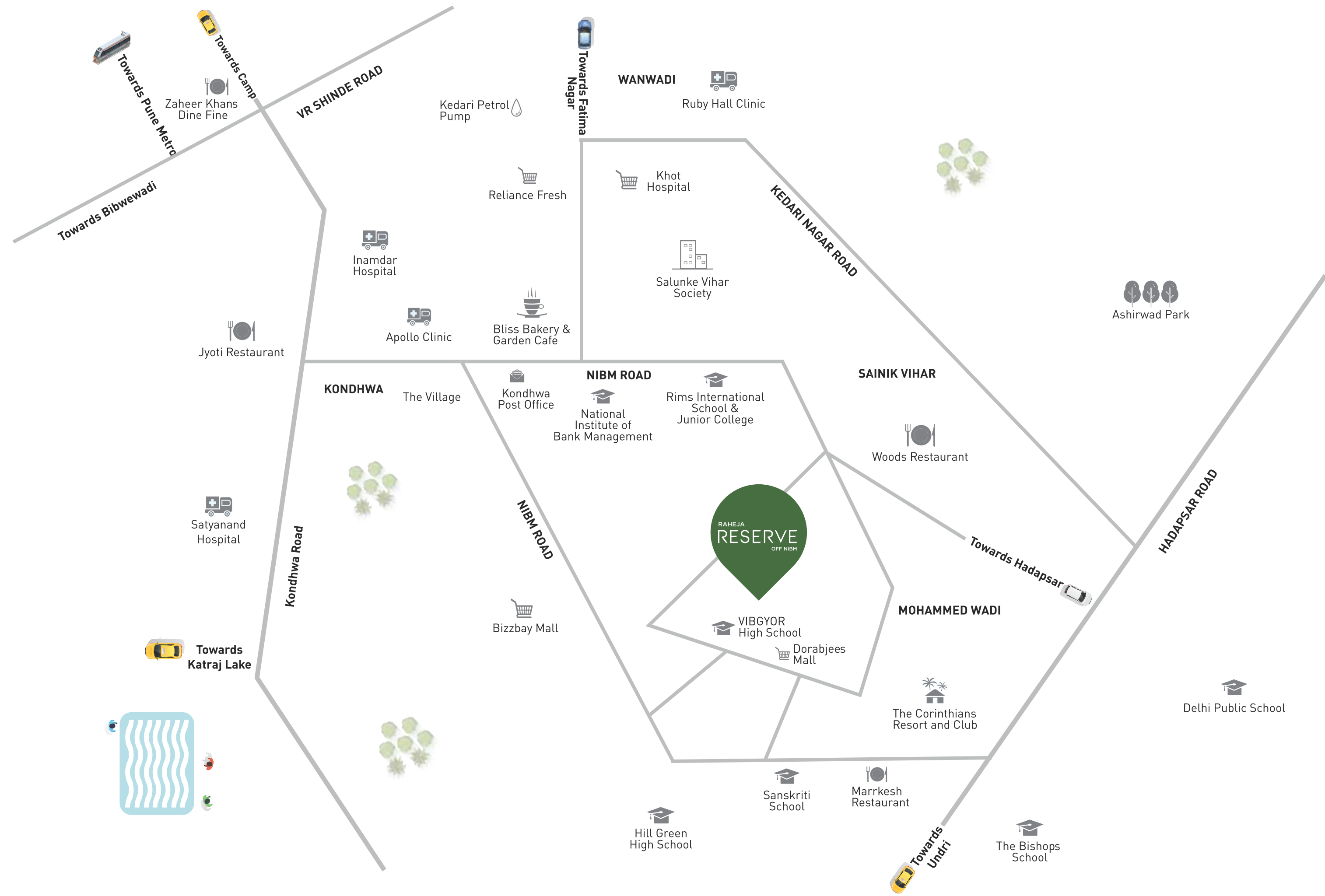


The residents of Raheja Reserve benefit from its strategic location. A gorgeous neighbourhood that offers life conveniences in immediate vicinity. Located off NIBM Road, you can enjoy the best of South and East Pune.

An assortment of restaurants and entertainment hubs are lined up practically next door. You can also discover the best of schools like Bishop's, Sanskriti and Vibgyor in the area.

The location also provides quick access to workspaces in Magarpatta, Kharadi, and Phursungi.





The details mentioned above are based on information available through Google Maps. The existence/continuity of existence of any landmark/s shown above are subject to change (as per plans finalized by the concerned authorities) and such changes are completely outside the control of the Promoter/Developer. Promoter/Developer makes no representation regarding existence/continuity of existence of any locations/landmarks shown above.



Promoter/Developer – Inorbit Malls (India) Private Limited (a. 'K. Raheja Corp' group co.)

Call 8080 445 445 or write to sales@kraheja.com

Tower-9 & Tower 10-MahaRERA Reg. No.: P52100021356
(Available on the website <http://maharera.mahaonline.gov.in> under registered projects.)

Site Address: Sales Gallery, Raheja Reserve, Near Dorabjee Mall, Off NIBM, Pune – 411 060

Note: T9 named Chronos & T10 named Supremus (Phase 1 of 'Raheja Reserve' comprising of the Building Nos. T7, T8, T9 & T10) in RV Premiere has been registered via MahaRERA Registration No: P52100021356 and is available on the website <http://maharera.mahaonline.gov.in> under registered projects. The project named 'Raheja Reserve' is a development by the Promoter/Developer – Inorbit Malls (India) Private Limited (a. 'K. Raheja Corp' group co.) and forms part of the development complex named "Raheja Vistas Premiere". The visuals and information contained in this booklet are indicative of the proposed common amenities in/for the RV Premiere development complex and are proposed to be available at the time of completion of the entire RV Premiere development complex. Representational images are not actual project images and are strictly for representational purpose only. The interiors, furnitures, accessories, etc. displayed in the content/s are merely indicative and are not included in the standard premises. Details for Phase 1 of Raheja Reserve (T9 & T10) is available for verification at site. All details should be verified prior to acting in relation to this project phase. Phase 1 of Raheja Reserve (T9 & T10) is subject to a mortgage with the Housing Development Finance Corporation and its requisite 'no objection' will be obtained.