



STEP INTO  
THE NATURE  
AND LIVE  
AMONGST THE  
GREENS



CORPORATE OFFICE: B-21, 22, Sector-16, Noida (U.P.)  
SITE OFFICE: HRA - 10, Surajpur, Site - C, Greater Noida.  
[www.airwil.in](http://www.airwil.in)



[airwil.in](http://airwil.in)



A team making the difference

PRESENTS



The Airwil Group, previously known as Grand Aashiyana, is progressing at a fast pace by developing sustainable Green environments in all its projects. Over the last few years, the group has built an enviable reputation through the deliverance of commitment and expertise.





## THE BIRD'S EYE VIEW

### **A HOME THAT WAS MEANT FOR YOU. NATURALLY, ITS YOURS.**

Born out of the idea of living green, and living well, Green Avenue is an amalgamation of luxury and sustainability. A host of infrastructural facilities that offer everyday comfort, and splendid options for entertainment and rejuvenation at the Grand Clubhouse, are the makings of a world-class lifestyle in this place you call 'home'.

Green Avenue is a 3 sides open corner plot, and is also directly adjacent to 130 m wide inter-city (ring road) connecting Greater Noida to Noida and Ghaziabad



# THE PODIUM CENTRAL GREENS

## A Peek Inside, GREEN AVENUE

### PROJECT COMPOSITION

- Total area - 8.5 acres
- 9 Towers
- 8 Residential Towers
- 1 Commercial Tower - Greenotel, retail space and serviced apartments together

### LANDSCAPING

- Based on the principle that natural light and playing in the sun are important
- 75% of the project is covered with greenery on all four sides
- 85000 sqft landscaped central park with acupressure walks, children's play areas, special aroma gardens and evening gardens

### PROJECT FEATURES

- Rain-water harvesting
- Certified earthquake resistant structure
- 24 hour intercom enable security services
- Covered and standard car parking
- Natural light in basement stilts
- 24 hour hot water and power supply





## EVENINGS BY THE POOL

**The Grand Club**, spread over 50,000 sqft is the crowning glory of Green Avenue. The tropical swimming pool, spa, and salon bring you a taste of the good life.

- Tropical swimming pool
- World class gym
- Open air lounge, and restaurant on terrace
- Jacuzzi and aroma massage therapy spa
- Movie theatre
- Cards room
- Banquet area with a capacity for 300 people

The  
**Grand**  
Club





# Floor Plans

**2350 SQFT**

4 BHK + 5T + Pooja + Servant Room



**1595 SQFT**

3 BHK + 3T



**1825 SQFT**

3 BHK + 4T + Servant Room

**1295 SQFT**

3 BHK + 2T



**995 SQFT**

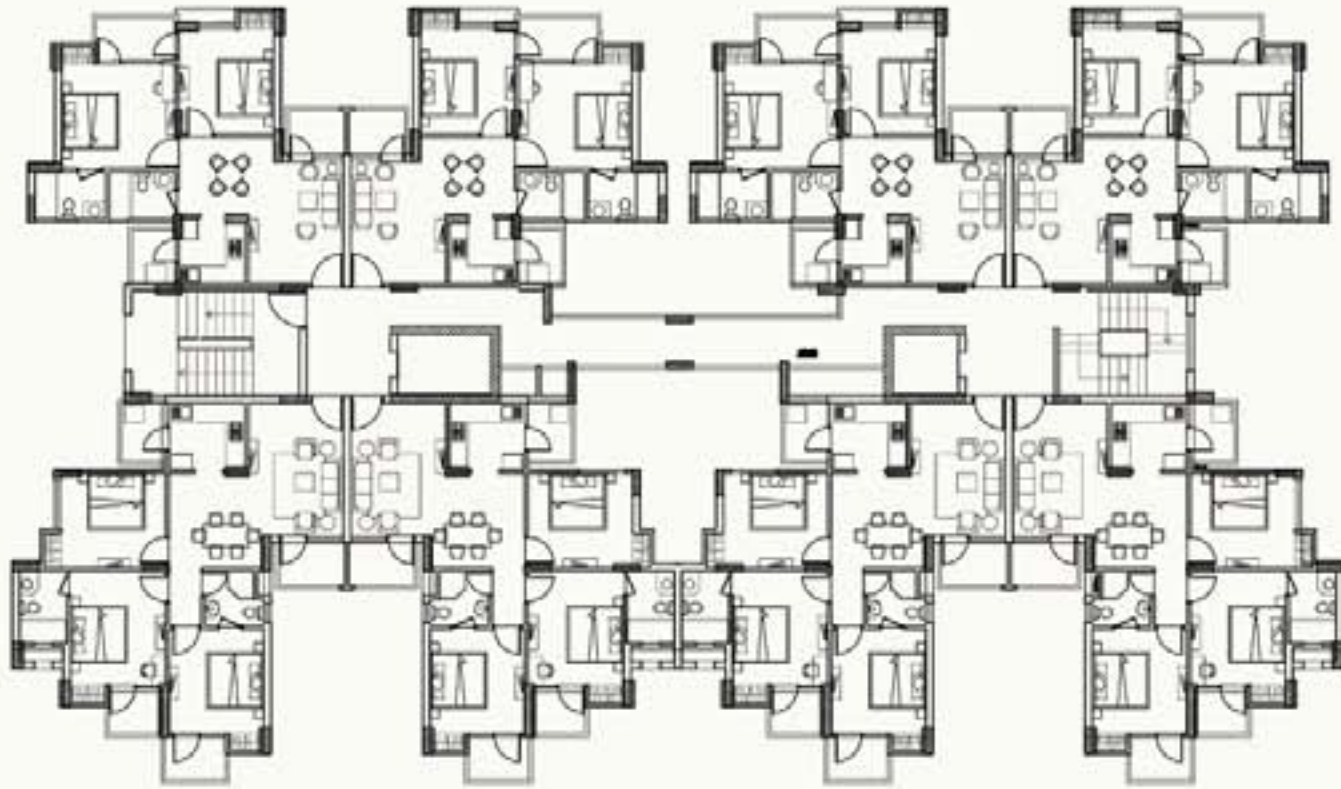
2 BHK + 2T



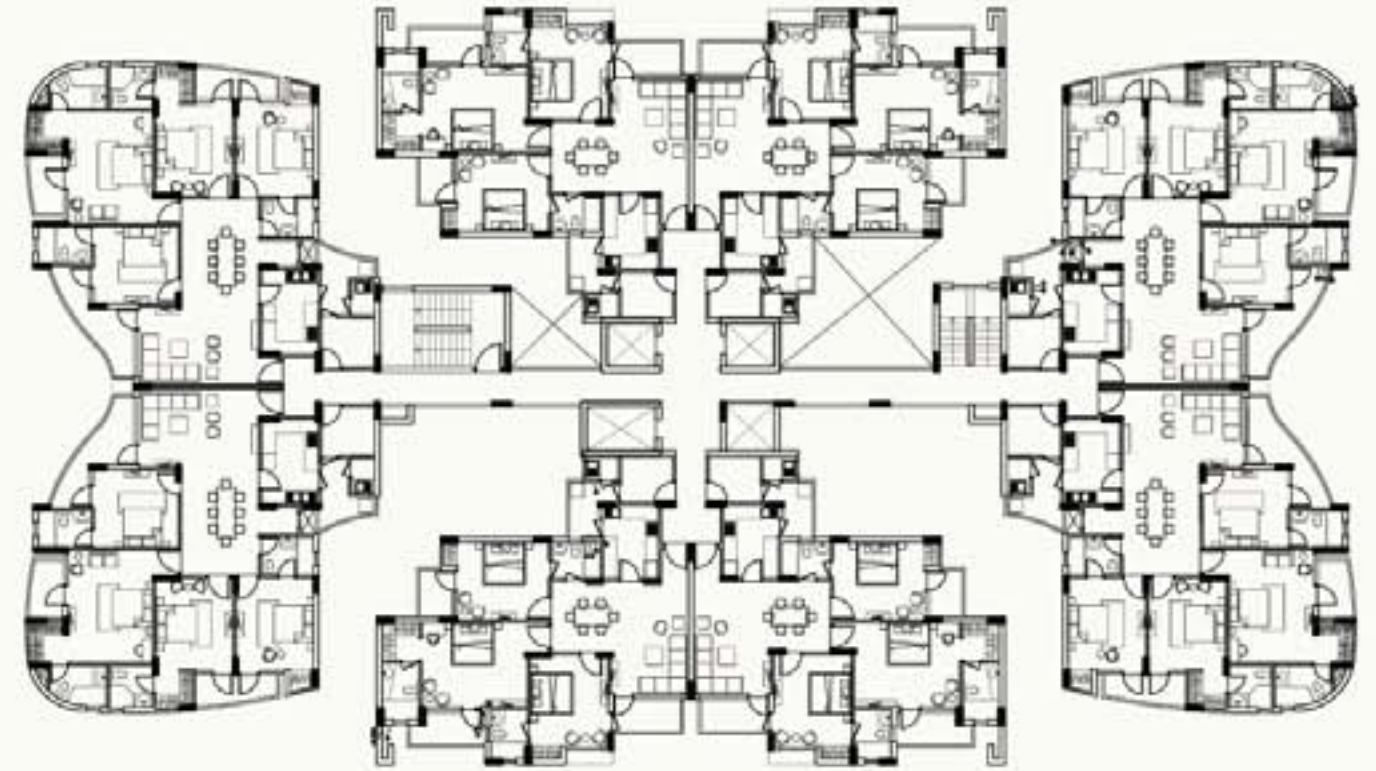


# Cluster Plans

Caspia & Iris Tower



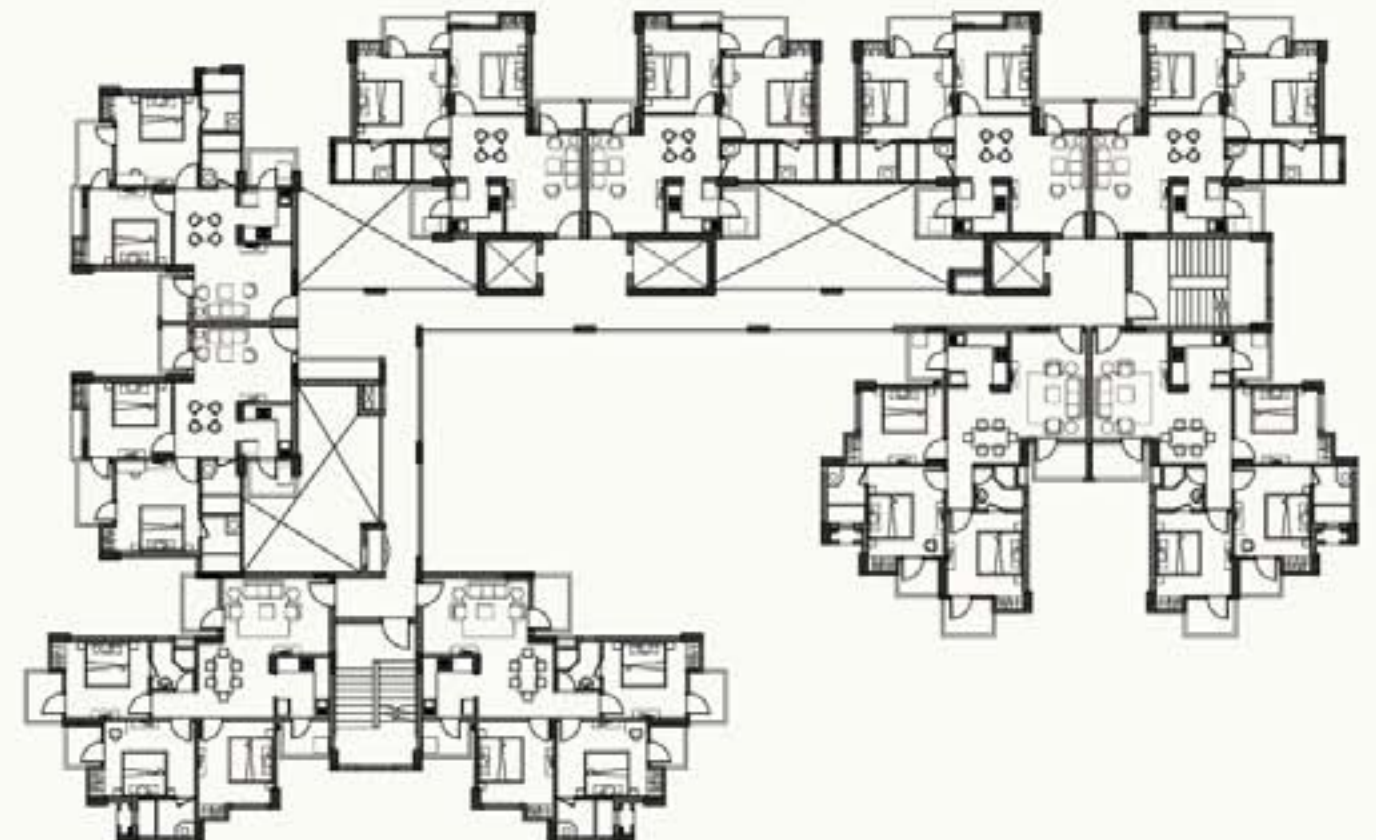
Oakwood & Rosewood Tower



Lotus & Orchid Tower



Tulip & Beetel Tower





# Location Advantages

It is proven, that wherever there has been a Formula -1 racing track, progress, prosperity, and world-class infrastructure has followed. Some of the initiatives that are already underway are:

**500 METERS FROM  
PROPOSED METRO LINE**

**PROPOSED  
INTERNATIONAL AIRPORT**

**KNOWLEDGE PARK  
(WITH UNIVERSITIES)**

**NIGHT SAFARI**

