



THE AFFORDABLE LUXURY ABODE



# BALAJI KANHA



**Corporate Office Address :**

Office no. 5,6,7 & 8, Padmavati building, Balaji Emerald, Behind Balaji Aangan Complex, Thakurli (E), 421201.

**Site Address :**

Balaji Knaha, Survey no 70/6 (P), 30/9, Near Manjunath College, Opposite Shiv Sena Shakha, Khambalpada. Thakurli East - 421201.

<b>Office Contact No. :</b> 0251 2971937 / 47	<b>Sales Contact No. :</b> +91 7685001700   +91 9136695258	<b>Website :</b> www.sslifespaces.in <b>Email :</b> enquiry@sslifespaces.in
Architect : Sthapatya Nirmaan	RCC Consultant : S.V. Patel & Associates	Legal Consultant : Ray Legal



For more information please  
SCAN QR CODE



Disclaimer: The plans, specifications, images and other details herein are only indicative and subject to the approval of the concerned authorities. The developer / owner reserves the right to change any or all of these in the interest of the development. Without prior notice or obligation. Artist's impression is used to illustrate the amenities, specification, image and other details and these may be applicable to select apartments only. Tolerance of +/- 3% is possible in the unit area on account of design and construction variances. All brand stated are subject to final decision of project architect. This printed material does not constitute an offer and / or contract of any type between the developer / owner and the recipient. Any purchaser / lessee of the development shall be governed by the terms and conditions of the agreement for sale / lease entered between the parties, and no details mentioned in this printed material shall in any way govern such transactions. Representative Images are only for presentation purpose.

**23 Storeys**  
to Celebrate  
**23 Memorable**  
Life Stories



## **A** LEGACY OF TRUST

The journey began in 1997 from a Stand Alone building to an impressive skyline of awe inspiring residential projects dotting the landscapes of Kharghar, Dombivli, Kalyan & Thakurli With just two and half decades in the business of construction, We at SS LIFE SPACES thrive to fulfil everyone's desire of buying their dream home with lifestyle amenities like recreational gardens, health clubs, state-of-art-gymnasiums in most of our projects.

SS Life Spaces will match its steps with changing time & technology. The group will not only cater to the exclusive & Luxurious housing segment but also to the segment with changing aspirations of its ever-growing young generation.

We would create residential & commercial spaces suitable for high quality living standards with most modern lifestyle amenities which will provide holistic living opportunities to its residents with a balance in living, working & leisure. It will not only provide modern lifestyle but also vibrant social atmosphere for living in harmony & bliss.





## Project Specifications

- Designer laminated main doors, bedroom & bathroom doors.
- Adequate electric points for AC, TV, Lights, Fans & Refrigerator.
- Points for Geysers & Water Purifier.
- Best Quality Vitrified Flooring
- Weather Resistant Acrylic Paints on External Walls.
- Rain Water Harvesting System.
- Power Backup for Lifts & Common Areas.
- Electric Meter room
- Fire Protection & Fire Fighting System





## Project Highlights

- High rise tower of G +23 Storey
- Exclusively Designed state of art roof top amenities
- Air Conditioned Fitness center with modern equipments
- Separate Resting room for Drivers
- Ultra luxury 2 BHK with separate dining space & balcony
- Spacious 1 BHK with Master bedroom with balcony
- 24x7 CCTV surveillance
- World Class Elevators
- Video Door Phone
- Full wall Tiles in Kitchen & Bathrooms
- Beautiful False Ceiling
- Elegantly Designed Entrance lobby
- Premium Quality Aluminum Windows
- Electric Charging Point for Two - Wheelers

📍 **Model College**  
1min Walk

**AIMS Hospital**  
5 mins Drive

**Omkar International school**  
2 mins Drive

**Thakurli Railway Station**  
3-4 mins Drive

📍 **Kalyan – Shill Road**  
4-5 mins Dive

**Kalyan Railway Station**  
10-12 mins Drive

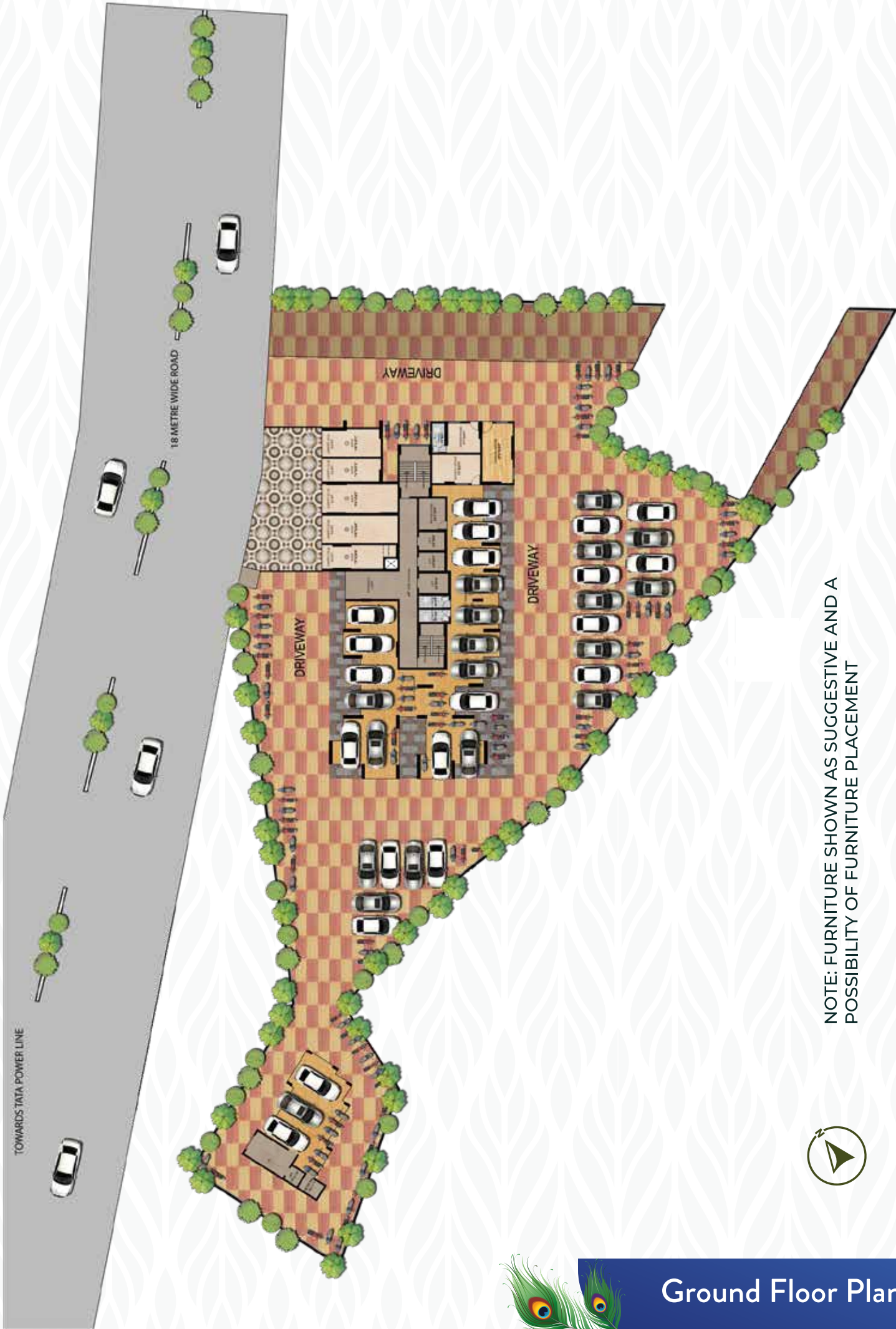
**Metro Mall, Kalyan**  
8 -10 mins Drive

**CNG Station**  
1min Drive



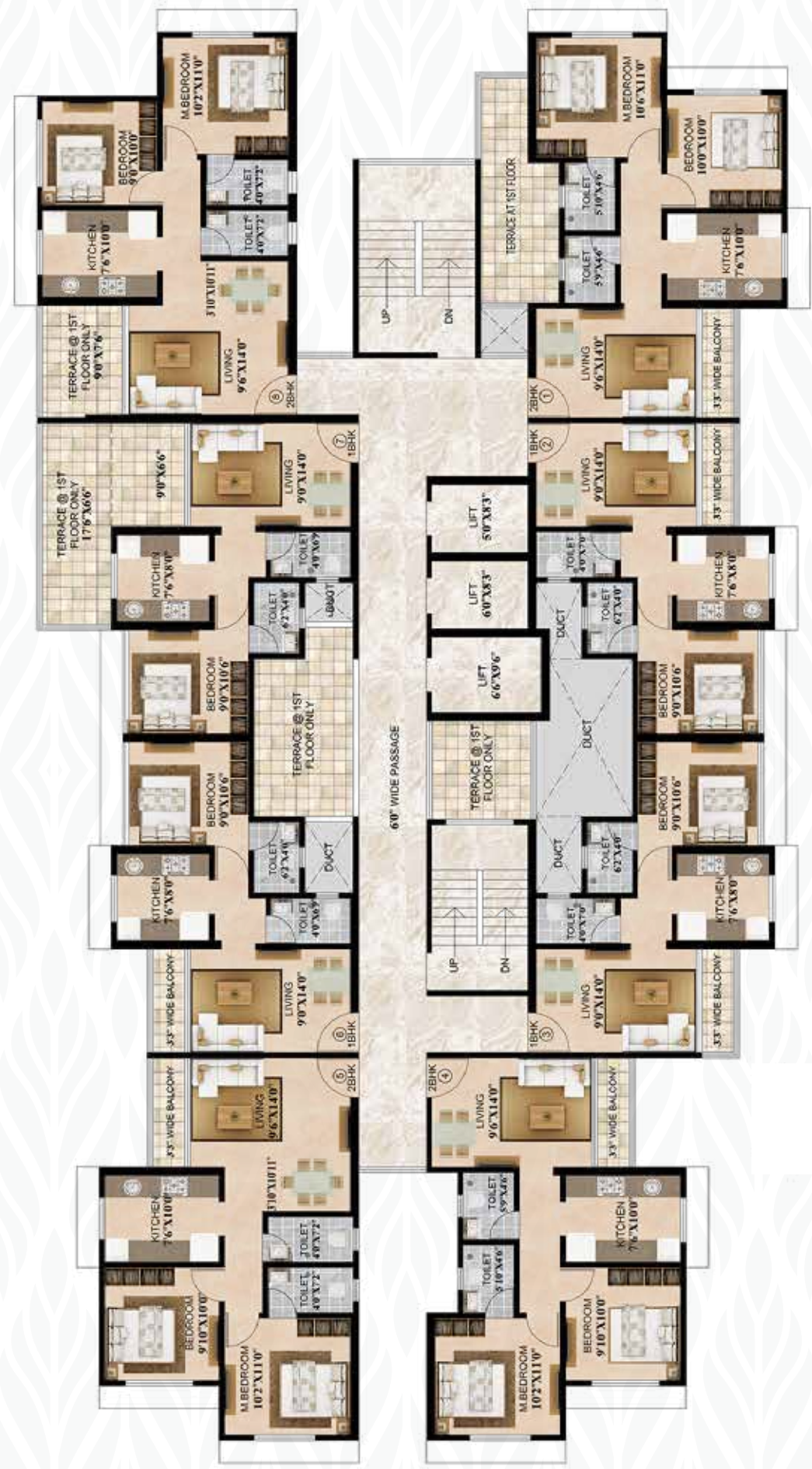
ROOF -Top-of-the-line  
RECREATION PLUSES





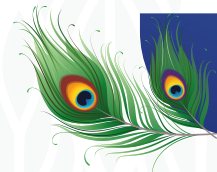
NOTE: FURNITURE SHOWN AS SUGGESTIVE AND A POSSIBILITY OF FURNITURE PLACEMENT

 **Ground Floor Plan**



NOTE: FURNITURE SHOWN AS SUGGESTIVE AND A POSSIBILITY OF FURNITURE PLACEMENT

 **First Floor Plan**

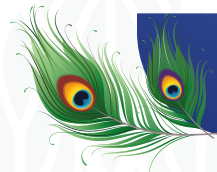
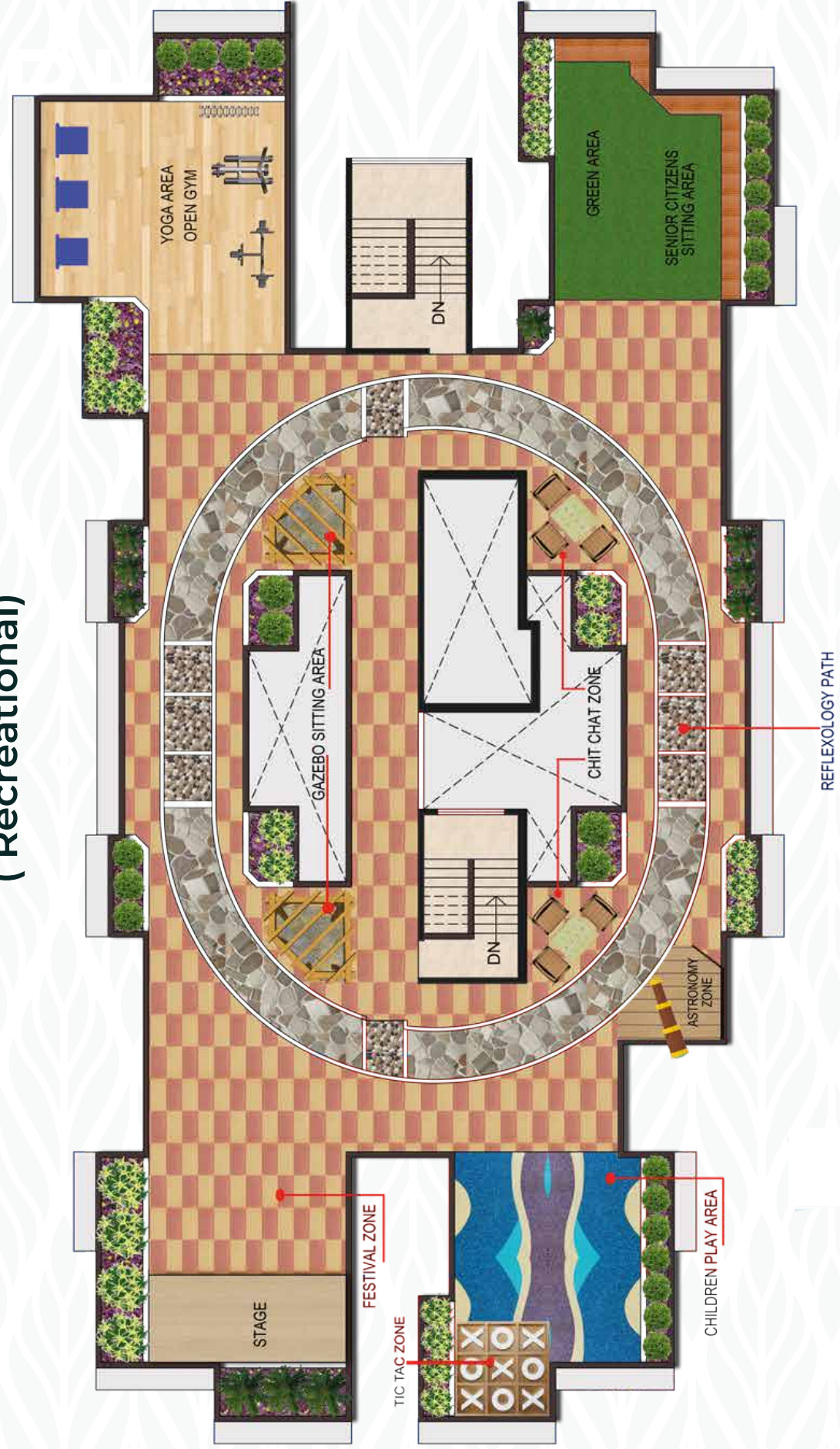


Typical Floor Plan



NOTE: FURNITURE SHOWN AS SUGGESTIVE AND A POSSIBILITY OF FURNITURE PLACEMENT

### Terrace Floor Plan (Recreational)



Terrace Floor Plan



NOTE: FURNITURE SHOWN AS SUGGESTIVE AND A POSSIBILITY OF FURNITURE PLACEMENT



# ISO Metric View (1 BHK)



**1 BHK**

NOTE: FURNITURE SHOWN AS SUGGESTIVE AND A POSSIBILITY OF FURNITURE PLACEMENT

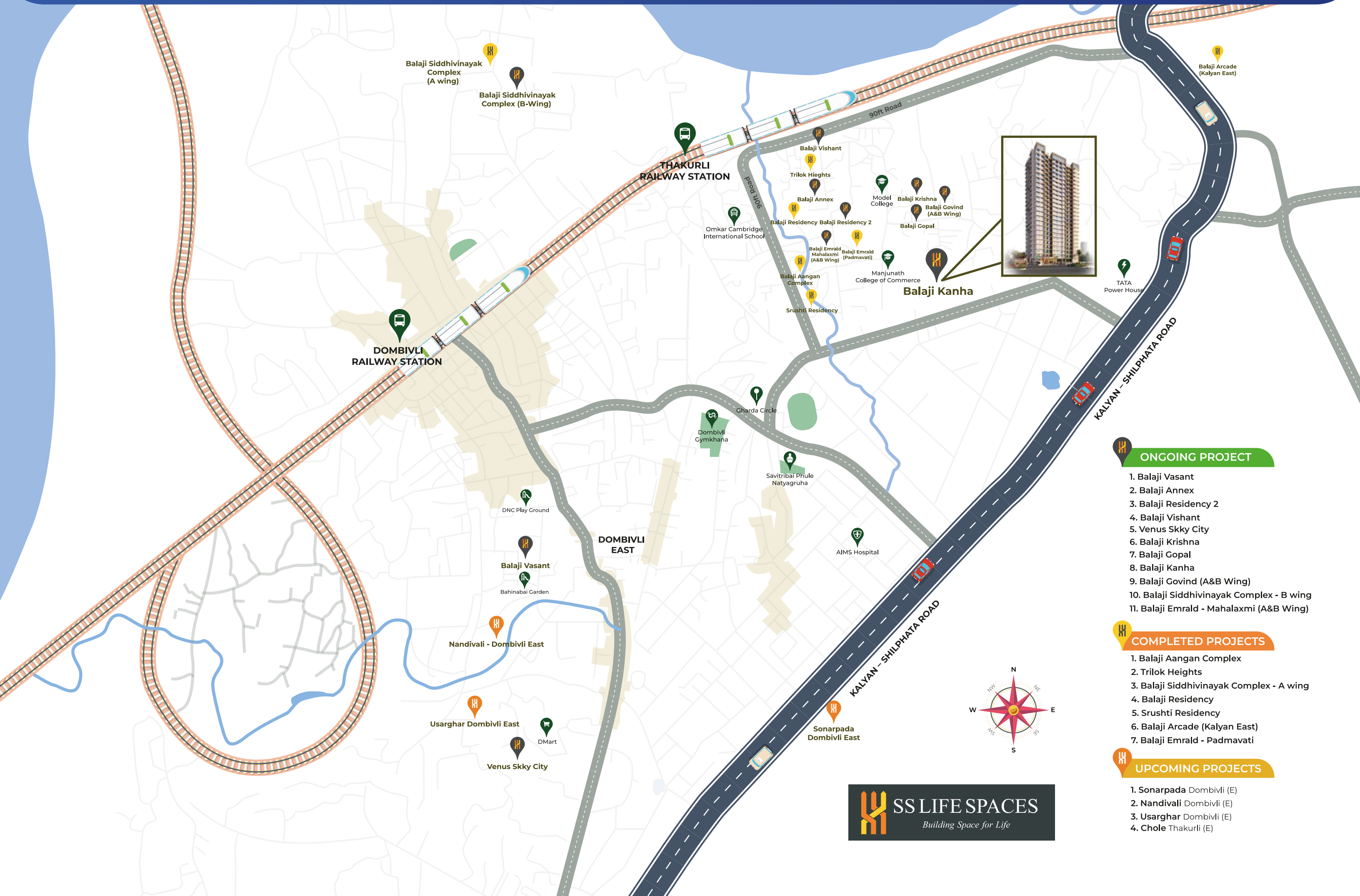
# ISO Metric View (2 BHK)



**2 BHK**

NOTE: FURNITURE SHOWN AS SUGGESTIVE AND A POSSIBILITY OF FURNITURE PLACEMENT

# OUR PRESENCE



## ONGOING PROJECT

1. Balaji Vasant
2. Balaji Annex
3. Balaji Residency 2
4. Balaji Vishant
5. Venus Skky City
6. Balaji Krishna
7. Balaji Gopal
8. Balaji Kanha
9. Balaji Govind (A&B Wing)
10. Balaji Siddhivinayak Complex - B wing
11. Balaji Emerald - Mahalaxmi (A&B Wing)

## COMPLETED PROJECTS

1. Balaji Aangan Complex
2. Trilok Heights
3. Balaji Siddhivinayak Complex - A wing
4. Balaji Residency
5. Srushti Residency
6. Balaji Arcade (Kalyan East)
7. Balaji Emerald - Padmavati

## UPCOMING PROJECTS

1. Sonarpada Dombivli (E)
2. Nandivali Dombivli (E)
3. Usarghar Dombivli (E)
4. Chole Thakurli (E)

