

AJNARA
PEACE OF MIND

Get high on life!

Affordable Homes in Greater Noida West



the group and its vision

Ajnara India Ltd. is a renowned name in the real estate sector with an experience of over two decades. With Delhi, Noida and NCR as its center of operations, Ajnara has successfully completed various residential and commercial projects on land acquired from DDA, GDA & Noida Authority through bidding and auctions.

In all the ventures completed so far, Ajnara has proven its dedication towards quality, design and construction, and has received much acclaim for great emphasis on aesthetics, appeal and timely completion. Ajnara's project palette includes everything from uber opulence to luxury within reach.

This has contributed greatly to the immense trust and confidence of our patrons in us.

homes with a great location!

G. Noida (W) is today on a fast track to progress. This fast developing area has caught immense attention of those looking for affordable housing. The 9 acre green stretch situated here brings the brilliance of living amidst nature. With great infrastructure and planned Metro connectivity, G. Noida (W) is a most sought-after destination in NCR.

Ajnara Le Garden is conveniently situated at G. Noida (W), which is well connected to NH-24 and the 130 meter wide road, better known as Noida-Greater Noida Link Road. A 100 meter wide commercial belt has also been planned on one side of this 130 meter wide road as per the Master Plan 2021 by Greater Noida Authority. Proximity to Noida Sector-121 and imminent Metro connectivity gives a further boost to the area, in terms of better connectivity and location as compared to other parts of NCR. Being in the vicinity of developed sectors of Noida, G Noida (W) is poised to become a residential hub in the future.

features that facilitate convenience

Grand/ featured entrance gate • Club house • A swimming pool with kids' pool • Spa with steam, sauna & Jacuzzi
• Gymnasium • Air conditioned banquet/party hall • Indoor table tennis • Badminton court • Half basketball court
• 24x7 security • Yoga centre • Jogging track • Lavish theme gardens • Solar lighting for common areas • Laundry (door service) • Separate kids' playing area with sand pits • Internet connectivity • Provision for Natural Gas pipeline in kitchen • 24x7 soft water supply • Doctor on call • Ambulance on call • Box cricket • Convenient shopping area for daily needs • Cafeteria • Separate area for extra curricular activity





1Sq mtr = 10.764 sq. ft.

This Project is mortgaged to



**Tower-H, J
Unit Plan**
Super Area= 1195 Sq.ft.
3 Bedroom
Drawing/Dining
2 Toilet
Kitchen
Balcony



**Tower-D, G, I
Unit Plan**
Super Area= 1285 Sq.ft.
3 Bedroom
Drawing/Dining
2 Toilet
Kitchen
Balcony

**Tower-H, J
Unit Plan**
Super Area 1495 Sq.ft.
3 Bedroom
Drawing/Dining
3 Toilet
Kitchen
Balcony
Servant Room



**Tower-D, G
Unit Plan**
Super Area= 1500 Sq.ft.
3 Bedroom
Drawing/Dining
3 Toilet
Kitchen
Balcony

ONGOING RESIDENTIAL PROJECTS



NEARING POSSESSION



POSSESSION ON



ONGOING COMMERCIAL PROJECTS



DELIVERED PROJECTS

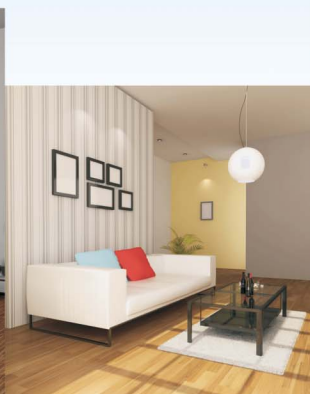


UPCOMING PROJECTS



specifications that enhance the interiors

- STRUCTURE : Earthquake resistant RCC framed structure.
- DOORS & WINDOWS : External doors and windows made of powder coated aluminium. Internal hardwood frames with flush doors.
- ELECTRICAL : Copper wiring in concealed P.V.C. conduits. Sufficient light and power points. Provision for T.V., telephone points in living room and all bedrooms.
- FLOORING : Vitrified tiles in drawing/dining/bedrooms and kitchen. Anti-skid ceramic tiles in toilets and balcony. Laminated wooden flooring in master bedroom.
- KITCHEN : Granite top working platform. Stainless steel sink. ceramic glazed tiles 2' above working platform with individual R.O. unit.
- TOILETS : Anti-skid ceramic floor tiles. Ceramic tiles up to door level on the wall. Branded sanitaryware & CP fittings.
- INSIDE WALL FINISH : Inside walls with POP punning and OBD.
- EXTERNAL FACADE : Exterior in superior paint finish.



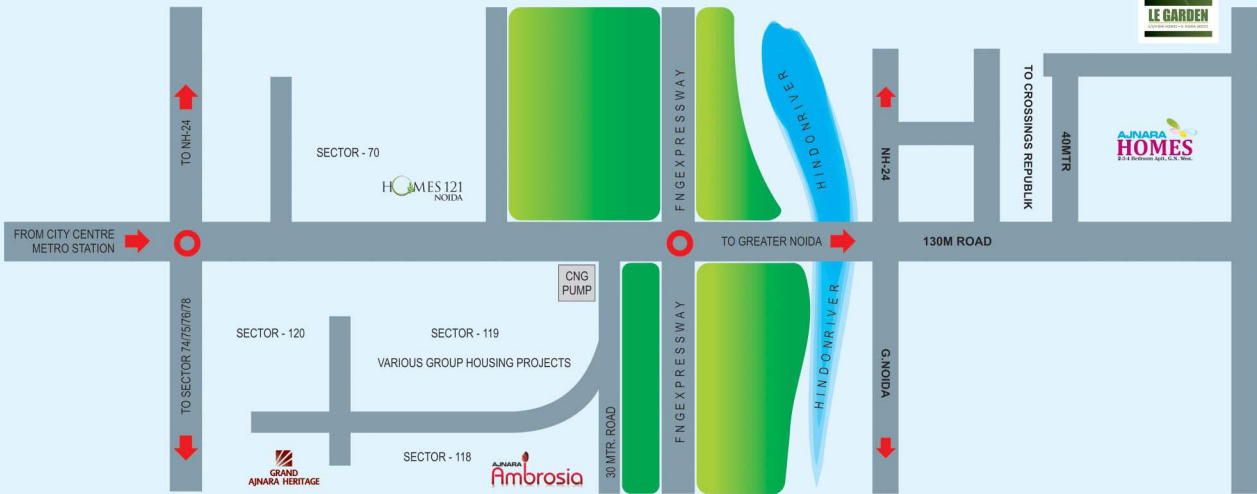
Site Plan

LEGEND	
875 SQ.FT	2 BHK + 2 TOL.
880 SQ.FT	2 BHK + 2 TOL.
995 SQ.FT	2 BHK + 2 TOL. TYPE I
995 SQ.FT	2 BHK + 2 TOL. TYPE II
1040 SQ.FT	2 BHK + 2 TOL + KID'S ROOM + FOYER
1095 SQ.FT	2 BHK + 2 TOL + STUDY
1140 SQ.FT	2 BHK + 2 TOL + KID'S ROOM
1195 SQ.FT	3 BHK + 2 TOL.
1295 SQ.FT	3 BHK + 2 TOL.
1495 SQ.FT	3 BHK + 2 TOL + DINING + SER. ROOM + TOL.
1500 SQ.FT	3 BHK + 3 TOL + DINING.

- LEGEND:**
- 1 MAIN ENTRANCE EXIT GATE COMPLEX
 - 2 ENTRANCE PLAZA
 - 3 ENTRANCE WATER FEATURE
 - 4 PERGOLA COVERED GOLF CART PARKING (6 NOS.)
 - 5 RAMP TO POOLING LVL.
 - 6 OPEN CAR PARKING
 - 7 BOUNDARY PLANTATION
 - 8 BADMINTON COURTS (2 NOS.)
 - 9 GAZEBO WITH SITTING
 - 10 SEATING UNDER TRELLIS
 - 11 HALF BASKETBALL COURT
 - 12 STEPPING STONES
 - 13 SKATING RINK
 - 14 YOGA MEDITATION GARDEN (2 NOS.)
 - 15 ELDERLY ZONE - TYPE 1 (2 NOS.)
 - 16 OPEN AIR THEATRE (OAT) (2 NOS.)
 - 17 OPEN SIT-OUT AREA NEAR ENTRANCE LOBBY
 - 18 PLUMERIA GARDENS (2 NOS.)
 - 19 KIDS PLAY AREAS (3 NOS.)
 - 20 TENSILE STRUCTURE
 - 21 PALM COURTS WITH FLOATING GAZEBOS (4 NOS.)
 - 22 MAZE GARDEN
 - 23 FRAGRANCE GARDEN
 - 24 CLUB BUILDING
 - 25 CLUB GREEN
 - 26 WATER FEATURE WITH PORTALS
 - 27 CLUB ENTRANCE WATER FEATURE
 - 28 POOL DECK AREA
 - 29 KIDS POOL
 - 30 SWIMMING POOL AT LOWER LEVEL
 - 31 SWIMMING POOL AT MIDDLE LEVEL
 - 32 SWIMMING POOL AT UPPER LEVEL
 - 33 ISLAND WITH PLANTATION
 - 34 CENTRAL GREEN (3 NOS.)
 - 35 ELDERLY ZONE - TYPE 2 (3 NOS.)
 - 36 WATER FEATURE WITH SS SCULPTURE
 - 37 CRICKET PRACTICE FITCH (1 NO.)
 - 38 COMMERCIAL
 - 39 TOWER DROP-OFF AREAS
 - 40 JOGGING TRACK/ FIRE TENDER ROUTE



Location Map



AJNARA
PEACE OF MIND
+91-9643807191

Corporate Office:- A- 8, 2nd Floor Sector 9, Noida. Gautam Budh Nagar. (U.P.) Landmark- NCPL Tower

Sales Office:- 608, 6th Floor, Ratan Square, New Burlington Chauraha, Vidhan Sabha Marg, Lucknow. Uttar Pradesh. 226001(India)



TOWNSHIPS • GROUP HOUSING • VILLAS • STUDIO APARTMENT • COMMERCIAL • IT PARKS • HOSPITALITY

All specifications, design, layout & towers conditions are only indicative & some of these can be changed at the discretion of Builder/Architect, these are purely conceptual & constitute no legal offerings