



SAMRUDDHI

Elegance
a home that emulates your style...



Developer

HIRANIMANTHAN
BUILDERS & DEVELOPERS

Affiliated



Follow us on



Site Address

Samruddhi Elegance, Bldg. No. 54, Nehru Nagar,
Kurla (E), Mumbai – 400024
Tel : +91-25371851

Branch Office (Kurla)

Skyview Castle, Building No. 146, 1st Floor,
Mother Dairy Road, Nehru Nagar,
Kurla (E), Mumbai – 400024

Head Office

B/207, Hinal Heritage S.V.P. Road,
Borilvali (W), Mumbai 400 092
Tel. : + 91-28918249, Fax : +91-28919673

Sales Enquiry

Tel : 9967356865 / 7756049777
Email : sales@thehiranigroup.com

Contact

Website - www.thehiranigroup.com
Email - hardik.h@thehiranigroup.com

Architect

M/S. Innovations

Legal Advisor

M/S. Chitnis Vailty & Co.

R.C.C. Consultant

M/S. S. S. Cons



SAMRUDDHI
Elegance
a home that emulates your style...

Hirani Manthan is a brand that is developed under the Brand Hirani Group. Its been successfully lead by Mr. Dinesh Sawant, who believes that a strong & recognized brand is a key attribute since it increases customer confidence, shapes the ownership experience & influence the buying decision. We are planning to develop a whooping 6.5 lacs sq.ft. area. With our expertise, in developing, residential and commercial spaces, we have full filled the dream of a peaceful and magnificent homes of 200-300 families.

Now introducing "Samruddhi Elegance", at Kurla Nehru Nagar. A magnificent tower of 16storey consisting of 1Rk, 1Bhk & 2Bhk that will be built according to the lifestyle you have dreamt of living. It comprises of Roof Top Jogging Track to make you fit and healthy. Being centrally located makes "Samruddhi Elegance" easily accessible to Kurla Railway Station, Super Markets, Bus Depot, Schools, Colleges etc. Thus its called.....Samruddhi Elegance...a home that emulates your style...



TYPICAL FLOOR PLAN



LAYOUT MAP

----- 12.20 MT. WIDE EXISTING ROAD -----



----- 12.20 MT. WIDE EXISTING ROAD -----

CHAIN LINK GATE PROPOSED AS PER CFO
 6.00 mtr Wide Gate



TYPE A 1BHK



TYPE B 1BHK



2BHK



AMENITIES

FLAT FEATURES

- Entrance door finished with laminate
- Entrance door with safety lock, night latch
- Internal flush door with laminate finish
- Vitrified flooring adorning the apartment
- Anodised aluminium sliding windows screened with M.S. grill
- Cable T.V., A.C. & telephone points in living room & bedrooms
- Oilbound distemper / plastic paint on interior walls
- Reputed make plumbing / fittings, sanitary items

GENERAL AMENITIES

- Entrance lobby with superior finishes
- High speed elevators
- Anti-termite foundation
- Rain water harvesting

SAFETY & SECURITY

- 24 X 7 surveillance camera in complex
- Video door phone security
- Advanced fire fighting system

KITCHEN FEATURES

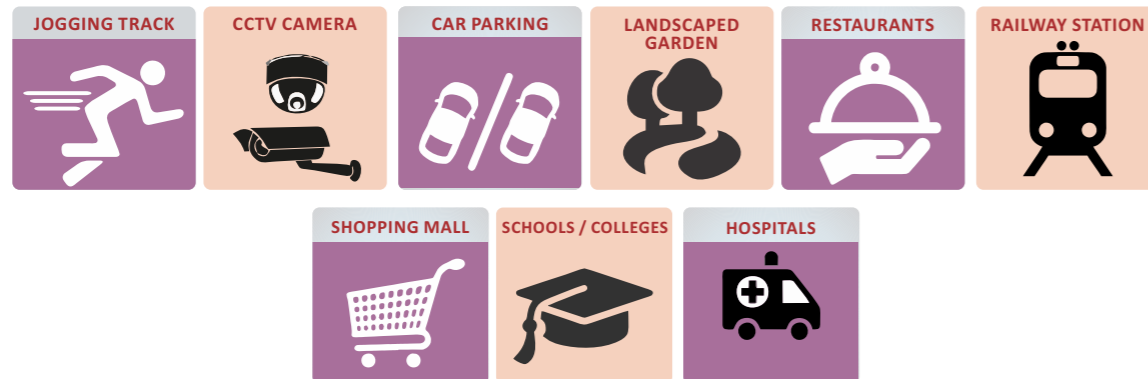
- Granite platform with scratch resistant stainless steel sink & drain board
- Tiled dado above platform
- Exhaust fan provision
- Provision for water purifier

STACK CAR PARKING

- World class hydraulic system

HEALTH CLUB

- Fully equipped state-of-the-art gymnasium

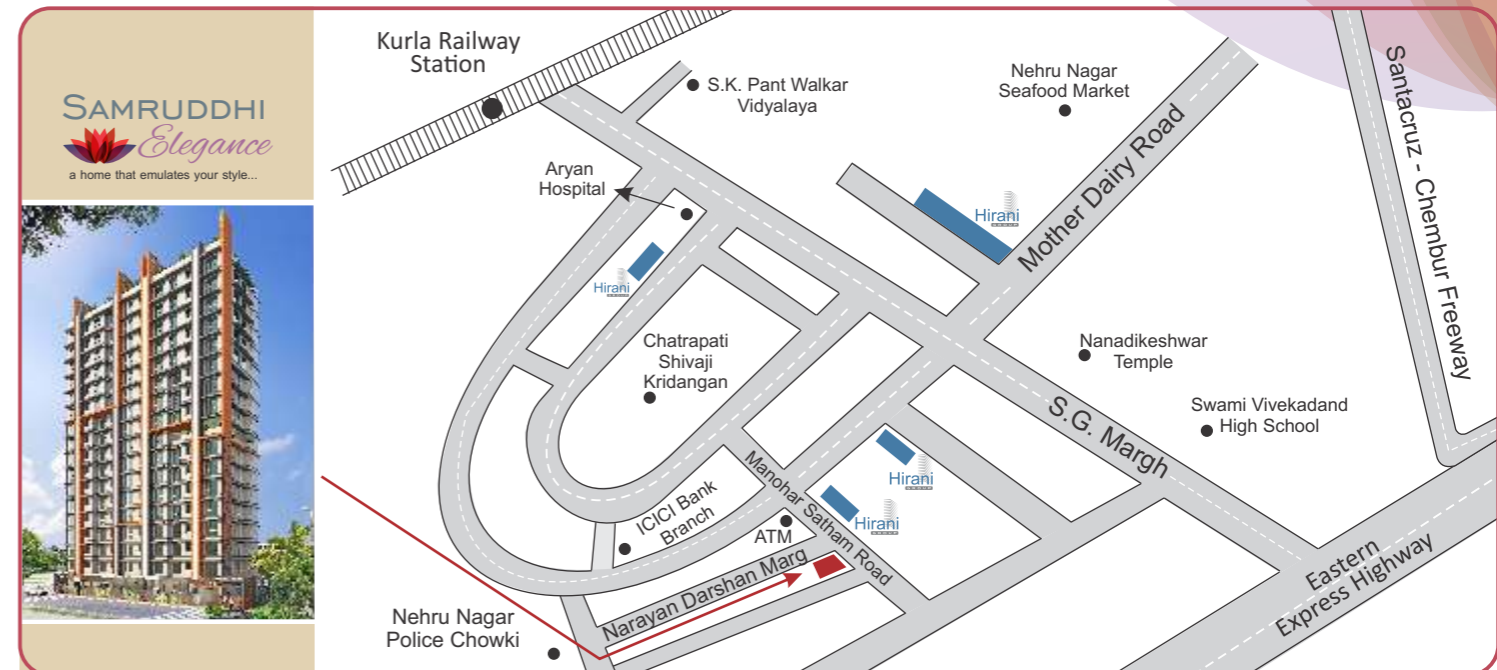


SAMRUDDHI *Elegance*

a home that emulates your style...



LOCATION MAP



SPECIAL FEATURES

- 5 min drive to Free Way to Mumbai
- 5 min walking distance from Kurla railway station & bus depot
 - 10 min walking distance from Nehru Nagar S.T. depot
 - 300 mtrs from Eastern Express Highway
- 10 mins driving distance from the International Airport
via Santacruz-Chembur flyover
- Hospital, School on walkable distance

ONGOING PROJECTS



SKY VIEW CASTLE
 redefining life style...
 Kurla East

UPCOMING PROJECTS

SAGAR HERITAGE,
 BLDG. NO. 67, KURLA (E)



SHREE SIDDHI TOWER,
 BLDG. NO. 69, KURLA (E)



COMPLETED PROJECTS

MEGHDOOT BLDG. NO. 73, KURLA (E)



ANTARIKSHA, BLDG. 43, KURLA (E)



SWANAND OASIS,
 BLDG. NO. 33, KURLA (E)



MANGAL MURTI,
 BLDG. NO. 120, KURLA (E)

More Up coming Projects

- *Building No. 120, Nehru Nagar Kurla East
- *Building No. 90, Kannamwar Nagar, Vikroli