



CODENAME TRILOGY

CONTEMPORARY INNOVATION IS ACROSS THE HORIZON.

ABOUT US

Established in 2010, Engineers Horizon, under the Linux Group Brand, has transformed Pune's real estate and infrastructure. Known for sustainable and affordable housing, the company's inventive designs create spacious, eco-friendly homes. With a commitment to customer satisfaction and excellence, Engineers Horizon is Pune's top real estate choice, synonymous with professionalism, innovation, and quality.

Luxury



Elegant designs and finishes give your home the ultimate style.

Distinguished Architecture



The ideal sized home in a dynamic active community.

Prestigious Locations



Building communities in the heart of the city.

CODENAME TRILOGY

UNVEILING SOON

4.5, 4 & 3 BHK SMART HOMES

CONTEMPORARY INNOVATION IS ACROSS THE HORIZON.



MASTER PLAN



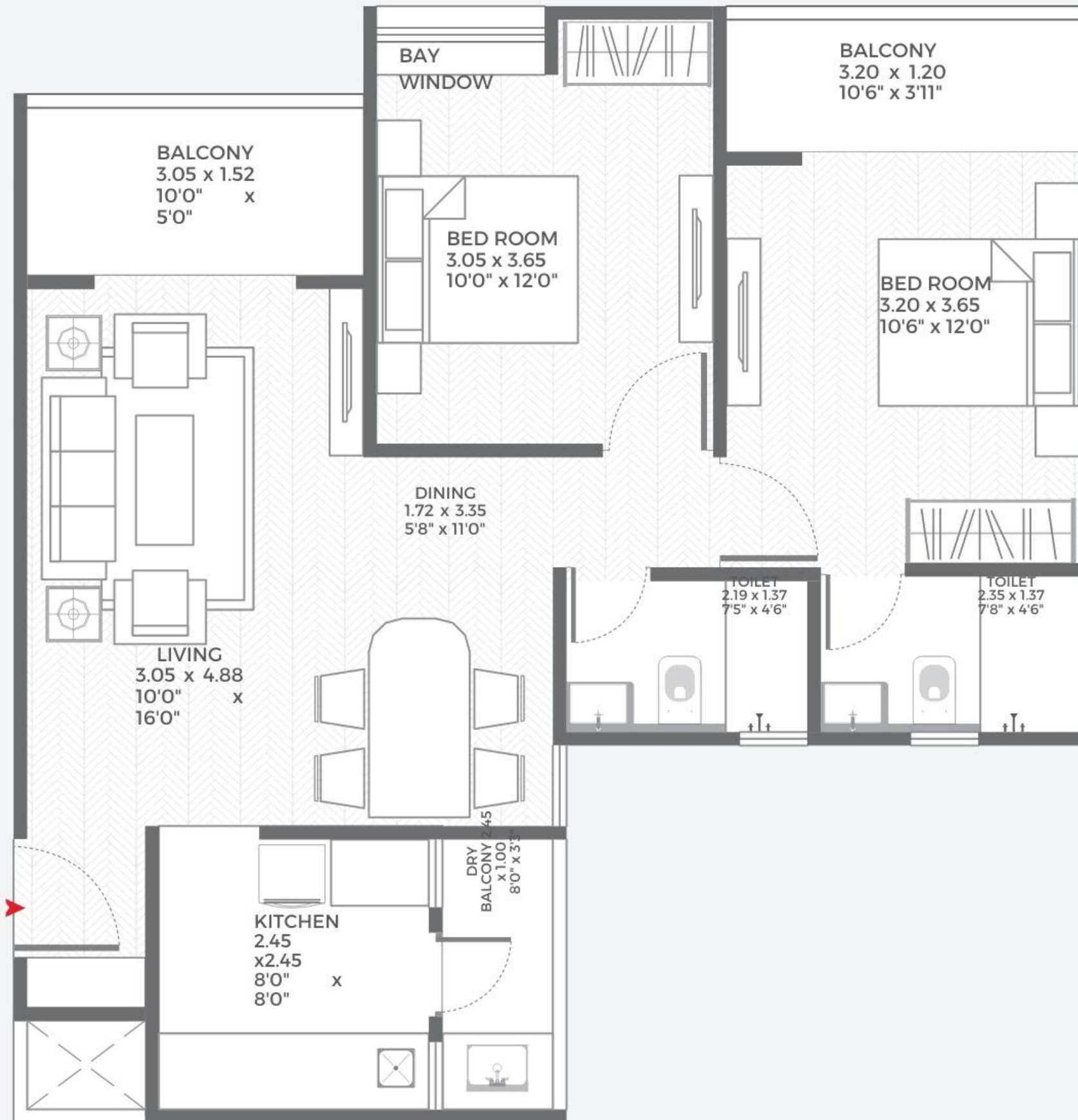
ROOFTOP AMENITIES:

1. TEMPERATURE-CONTROLLED POOL
2. PARTY LAWN
3. GAZEBO
4. OPEN AIR GYM
5. INDOOR PLAY AREA

GROUND AMENITIES:

6. CLUBHOUSE
7. GAZEBO
8. MULTI-PURPOSE COURT
9. JOGGING TRACK
10. AMPHI-THEATRE SITTING
11. DOG PARK
12. CRICKET PITCH
13. SENIOR CITIZENS AREA

UNIT PLANS



**CODENAME
TRILOGY**

PRIME 2 BHK

CONFIG

2 BHK

NAME

PRIME

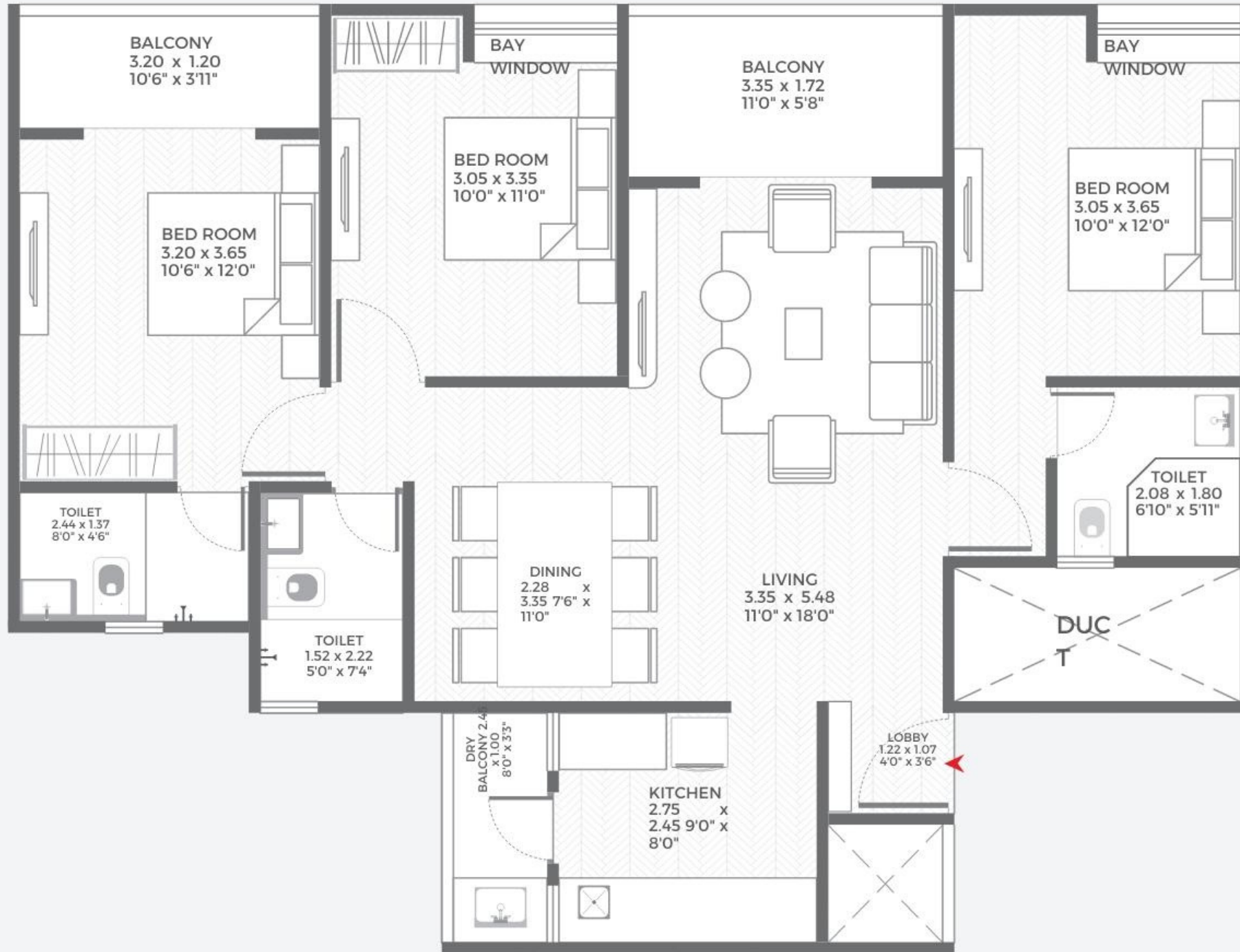
**CARPET
(SQ FT)**

800 - 850

PRICE

₹89 - 94 L

UNIT PLANS



CODENAME
TRILOGY

PRIME 3 BHK

CONFIG

3 BHK

TYPE

A

NAME

PRIME

CARPET
(SQ FT)

1050 - 1100

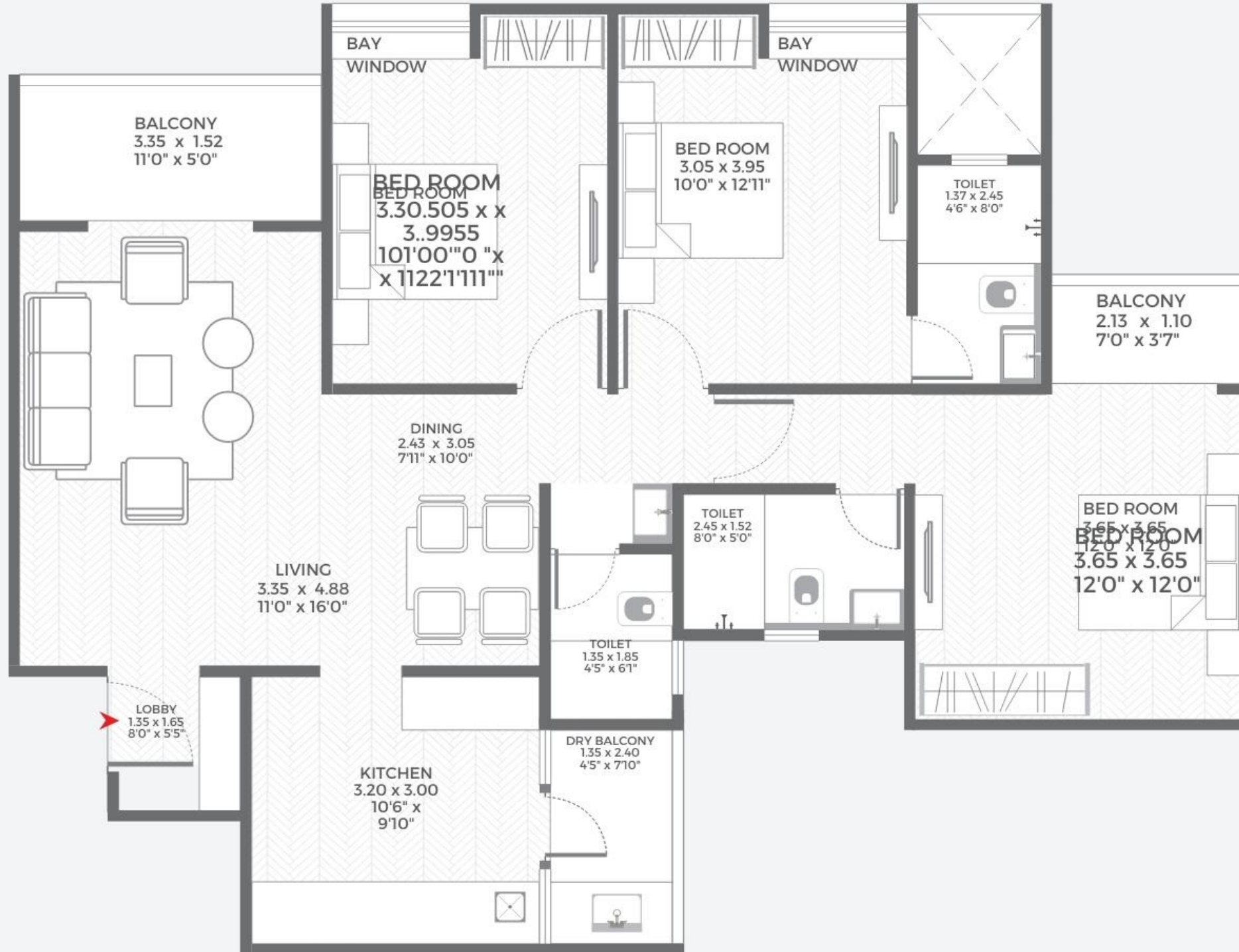
PRICE

₹1.25 - 1.30 Cr

UNIT PLANS

CODENAME
TRILOGY

PRIME 3 BHK



CONFIG

3 BHK

TYPE

B

NAME

PRIME

**CARPET
(SQ FT)**

1050 - 1100

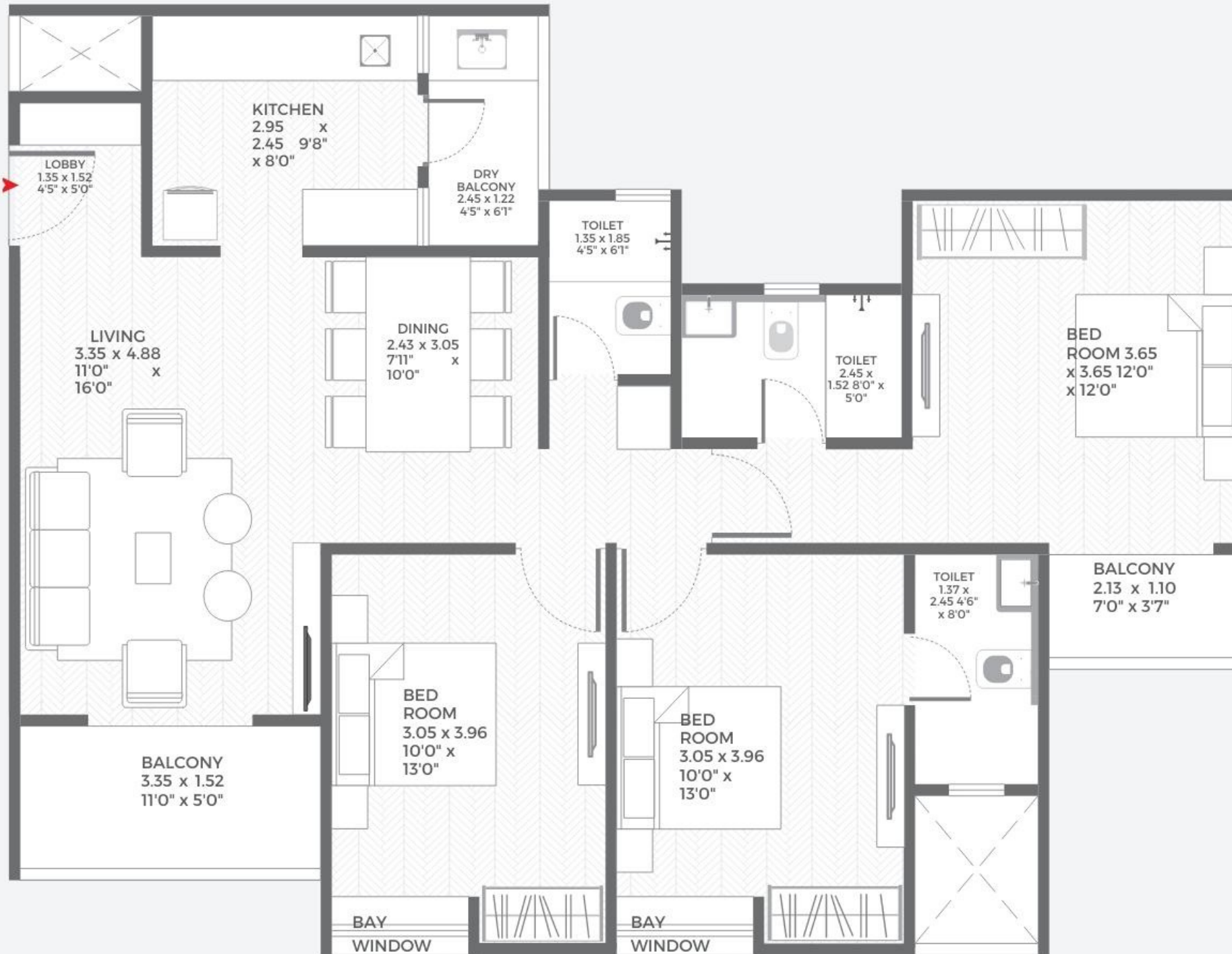
PRICE

₹1.25 - 1.30 Cr

UNIT PLANS

**CODENAME
TRILOGY**

PRIME 3 BHK



CONFIG

3 BHK

TYPE

C

NAME

PRIME

**CARPET
(SQ FT)**

1050 - 1100

PRICE

₹1.25 - 1.30 Cr

UNIT PLANS

CODENAME TRILOGY

GRANDE 4 BHK



CONFIG

4 BHK

NAME

GRANDE

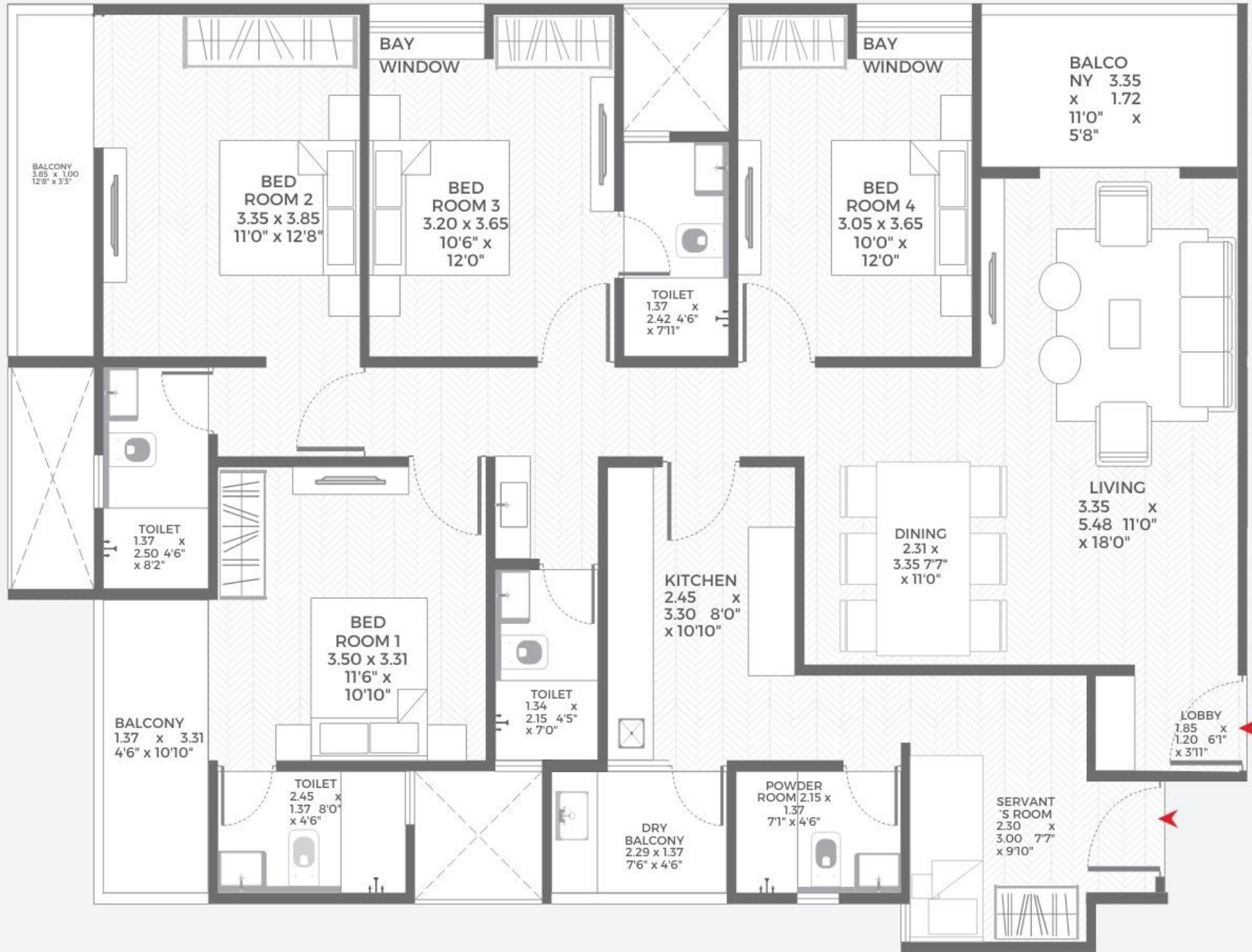
**CARPET
(SQ FT)**

1400 - 1450

PRICE

₹1.65 - 1.70 Cr

UNIT PLANS



CODENAME TRILOGY

ROYAL 4.5 BHK

CONFIG	4.5 BHK
NAME	ROYAL
CARPET (SQ FT)	1550 - 1600
PRICE	₹1.81 - 1.86 Cr

ISOMETRIC VIEW - 3BHK



ISOMETRIC VIEW - 4BHK



ROOFTOP GALORE

Kids Play Area



INTRODUCING
TEMPERATURE CONTROLLED
ROOFTOP POOL



Party Lawn



EXTRAVAGANT AMENITIES

Ground

- Amphi-seating
- Dog Park
- Multipurpose Court
- Clubhouse
- Kids Play Area
- Cricket Pitch

Rooftop

- Temperature Controlled Swimming Pool
- Open Air Gym
- Gazebo
- Party Lawn
- Yoga Meditation Centre
- Feature Wall

EXTRAVAGANT AMENITIES

Podium

- Creche (Daycare)
- Society Office
- Indoor Activity Zone
- Salon
- Business Bay

AND SO MANY MORE...

SPECIFICATIONS



Structure

- RCC frame structure with 5" thick wall



Wall Finishes and Paint

- External wall: Eco-friendly bricks / AAC blocks with sand-faced plaster with acrylic paint
- Internal plaster: Gypsum / P.O.P. smooth finish / single quote plaster



Doors & Windows

- All doors & door frames with good quality fittings
- Main door and bedroom doors with laminate
- Special fully openable aluminum Domel doors for balconies
- Bathroom doors with laminate & granite/ wooden door frames
- Anodized aluminum sliding windows with mosquito net and full body quartz tile sill
- Digital lock
- Bedroom and bathroom doors with latch lock

SPECIFICATIONS



Electrical & Wiring

- Concealed copper wiring with premium quality modular switches
- Miniature leakage circuit breaker (MCB) / earth leakage circuit breaker (ECB)



Flooring

- Anti-skid tiles for the terrace & bathroom
- Vitrified tiles for entire flat - 800X1600 mm



Bathroom

- Designer bathroom with antiskid ceramic flooring
- Kohler or equivalent CP fitting with premium quality designer sanitary ware
- Miniature leakage circuit breaker (MCB)
- Wall tiles upto 7' in height
- Powder-coated aluminium louvers with frosted glass
- Concealed plumbing with single lever diverter arrangement and provision for boiler
- Full-body quartz tile window sill for windows & bathrooms
- Provision for exhaust fan in each bathroom

SPECIFICATIONS



Convenience & Comfort

- Adequate electrical points
- Adequate TV & Telephone points
- Anti-rust letter boxes and name plates



Kitchen

- Full body quartz tile kitchen platform with stainless steel sink and Full body quartz tile dado upto 2' height
- Light points for microwave/mixer grinder above the platform
- Provision for Aquaguard (water purifier) & exhaust fan point



EON IT PARK

WORLD TRADE
CENTRE

HYATT, PUNE

PHOENIX
MARKETCITY

DECATHLON

PUNE INTERNATIONAL
AIRPORT

Location



INTRODUCING

**CODENAME
TRILOGY**



THANK YOU