



PURAVANKARA

PURVA
windermere

AN ELITE ENCLAVE

The pioneers of community living!



SPACE AND LUXURY

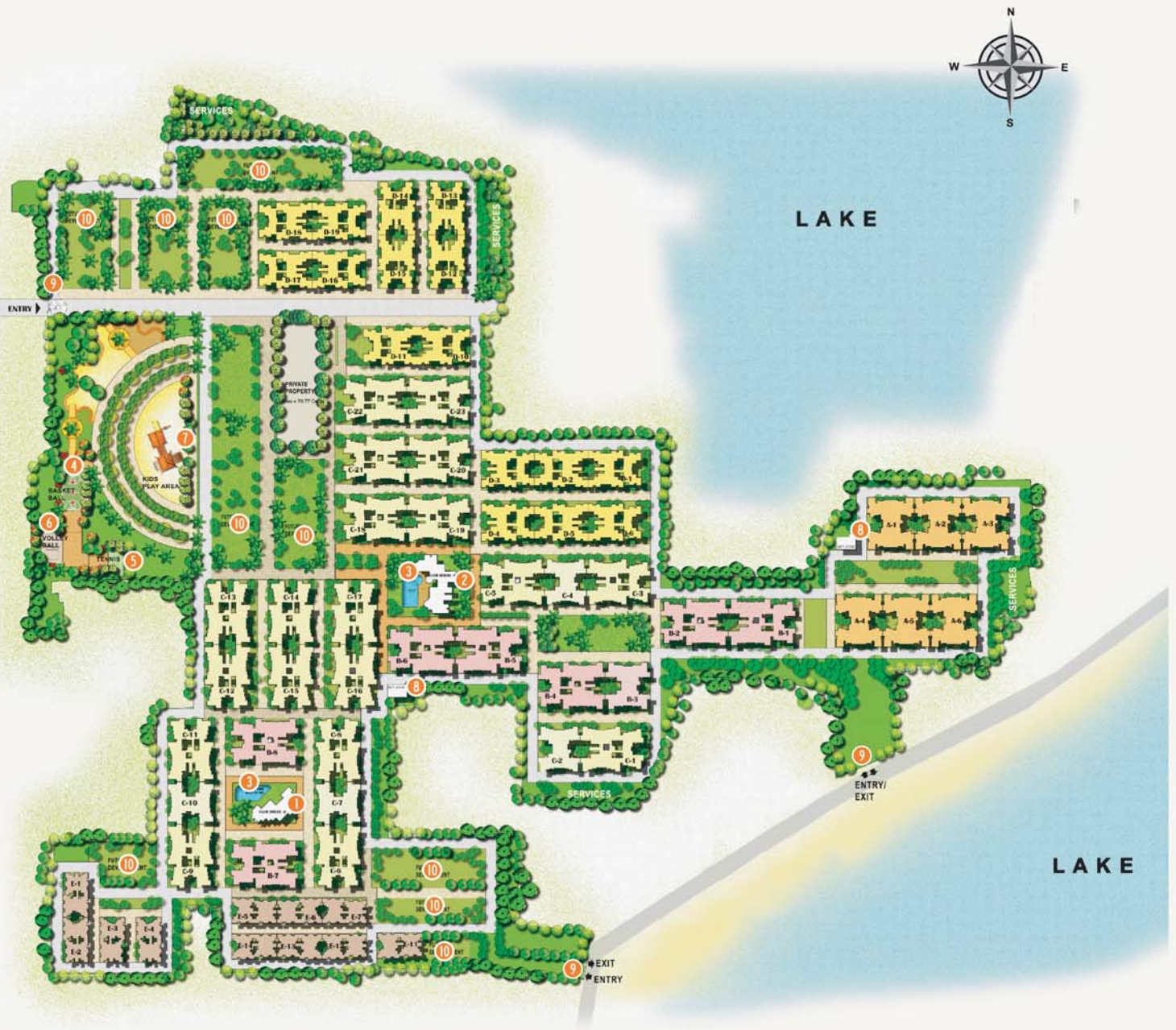
Dream, desire and achieve! Living in Purva Windermere means living in tandem with this maxim. Sprawled on 55 acres in Pallikaranai, 7 km from Velachery, these spacious residences are well connected and promise you a lifestyle upgrade that people in metro cities only dream of. Drive to the beach at ECR and watch your children rejoice their youth. Dine at one of several fine restaurants before heading back to your exotic and spacious home. Puravankara's perseverance to deliver your wish for a flawlessly balanced standard of living is apparent in this elite enclave.



PURVA
windermere
AN ELITE ENCLAVE

MASTER PLAN

PURAVANKARA



Master plan is subject to change

Legend

- | | |
|-----------------------|-------------------------------|
| 01. Aquamarine Centre | 06. Volleyball Court |
| 02. Lakeside Leisure | 07. Fun and Frolic Zone |
| 03. Swimming Pool | 08. Provision for Supermarket |
| 04. Basketball Court | 09. Entry and Exit Points |
| 05. Tennis Court | 10. Future Development |



AMENITIES

Indoor Amenities: Aerobics / Yoga Room | Billiards Room | Table Tennis Room | Squash Court | Cards Room / Indoor Games Hall | Entertainment Centre | Gymnasium | Health Club (For both men and women) | Multipurpose Hall | Provision for Super Market | Provision for Restaurant | Provision for Parlors [for both men and women]

Outdoor Amenities: Basketball Court | Tennis Court | Volleyball Court | Fun and Frolic Zone | Jogging Track | Well-lit Landscaped Garden | Swimming pool with associated change rooms and toilets

PROJECT SPECIFICATIONS

FIXTURES AND FITTINGS

Doors

Engineered wooden door frame and shutter or HDF Doors with teak wood frame OR equivalent. Bedroom doors are engineered wooden door frame and shutter OR HDF doors with teak wood frame OR equivalent including good quality hinges, lock & handle. Main door has a security eye. Toilet doors are waterproofed (inner side) flush door with hardwood frame OR equivalent including good quality hinges, handle and thumb turn lock. Living, dining balcony doors - Glazed French windows with heavy gauged, UPVC / Aluminum frames with sliding or hinged shutters. Other balcony and utility door are UPVC / Aluminum glazed door-cum-window with sliding or hinged shutters.

Windows

Heavy gauged, UPVC / Aluminum frames with glazed, sliding / hinged shutters with M.S.Grills.

Ventilators

Heavy gauged, UPVC / Aluminum frames with glazed, louvered / hinged fixed ventilators with a provision for exhaust fan.

PLUMBING AND SANITARY FITTINGS

Toilets

Toilet fitted with glass partition in shower area (for master bedroom). Good quality vitreous ware wash basin with granite/marble counter top with basin mixer (hot and cold water), bottle trap for master bedroom and bottle trap/pedestal for other toilets, along with premium branded sanitary ware and CP fittings, wall mounted EWC, including seat cover, flush valve and health faucet.

Kitchen

Kitchen counter-top of highly polished bull-nosed granite. Stainless steel sink (double bowl, single drain for 2, 3 and 4 BHK), with hot and cold water basin mixer of premium branded CP fittings. Water outlet provision for water purifier above drain board.

ELECTRICAL

Best quality cables / wiring through PVC conduits concealed in walls and ceilings. Light points, fan, exhaust fan points, power points, call bell point, telephone points, TV points and one AC point in all the bedrooms. One AC point provision in living and dining area. Each 4 BHK apt. to have 7000 W, 3 BHK apt. (large and regular) to have 6000 W and 2 BHK apt. to have 5000 W power supply as per TNEB norms.

TV AND TELEPHONE POINTS

One outlet for TV and telephone in the living area and in all bedrooms. Provision for cable TV connection only in the living room.

D.G.

Back-up for common area lighting, pumps and lifts. Each 4 BHK apt. to have 3000 W, 3 BHK apt. (large & regular) to have 3000 W and 2 BHK apt. to have 2000 W power supply.

ELEVATORS

Automatic lifts, intercom facility connected to security cabin with D.G. back-up.

INTRA-COMMUNICATION SYSTEM

Intra-communication facility provided from security to each apartment and among apartments within the complex.

SECURITY

Peripheral vigilance through CCTV / cameras and patrolling by security guards. Gas leak detector in kitchen.

FINISHES

Flooring

Ground floor main entrance lobby - Imported marble / highly polished granite / engineered marble. Living, dining, bedrooms, passages leading to bedrooms, balconies, living and dining balconies, kitchen and utility - Vitrified tiles. Toilets - Anti-skid / Matt ceramic designer tiles.

Walls

All interior wall faces - Plastered, smoothly finished with putty and painted in acrylic emulsion. Kitchen - Dado over kitchen counter is of vitrified tiles / ceramic tiles upto 600 mm (2 ft) height approximately. Toilets - Full height (till false ceiling) coloured glazed / matt finish designer tiles. Exterior fascia of building - Plastered and painted with acrylic based / cement based paints and textured surfaces in selective places as per Architect's design.

Ceilings and Railings

POP / Polystyrene cornices in living, dining and foyer areas. Ceilings are finished with putty and painted in acrylic emulsion. Staircase hand rails and balcony railings - MS Railings as per Architect's design.

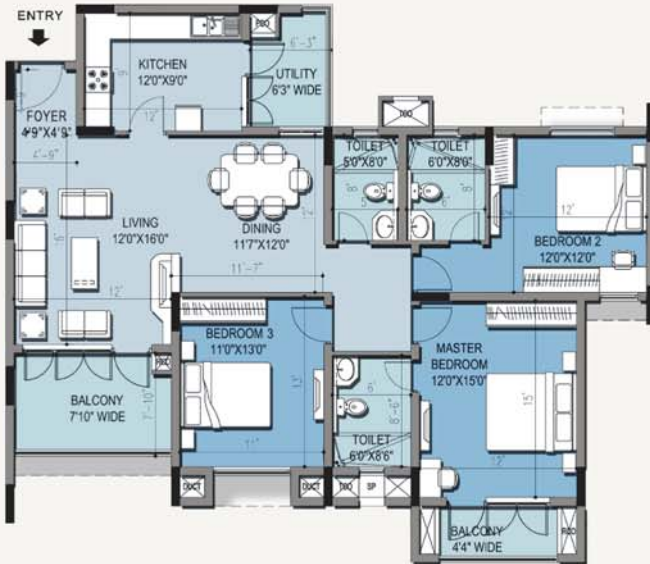
STRUCTURE

RCC framed multi-storied structure, parking in Stilt floor and surface; the upper floors will have apartments. Staircase and lift in each block connect from Stilt floor to all levels.

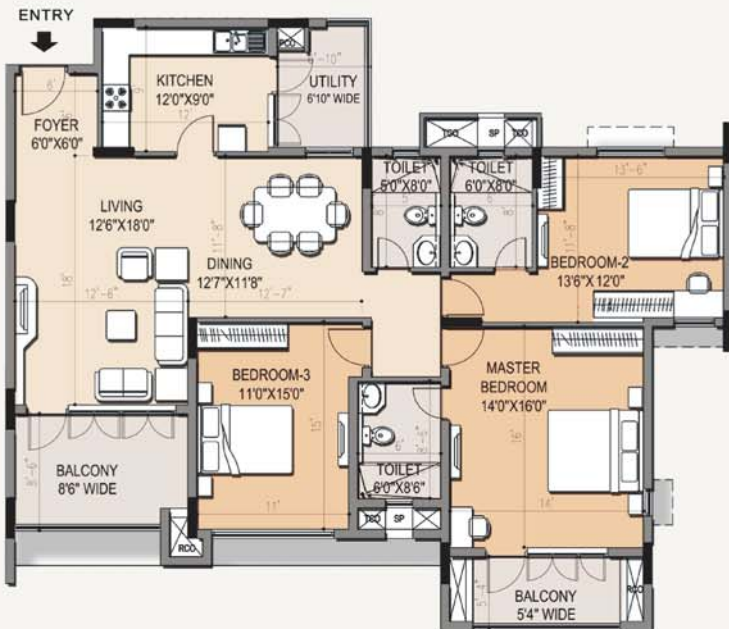
2 BHK - 1255 Sq. Ft.



3 BHK - R - 1944 Sq. Ft.



3 BHK - L - 2162 Sq. Ft.

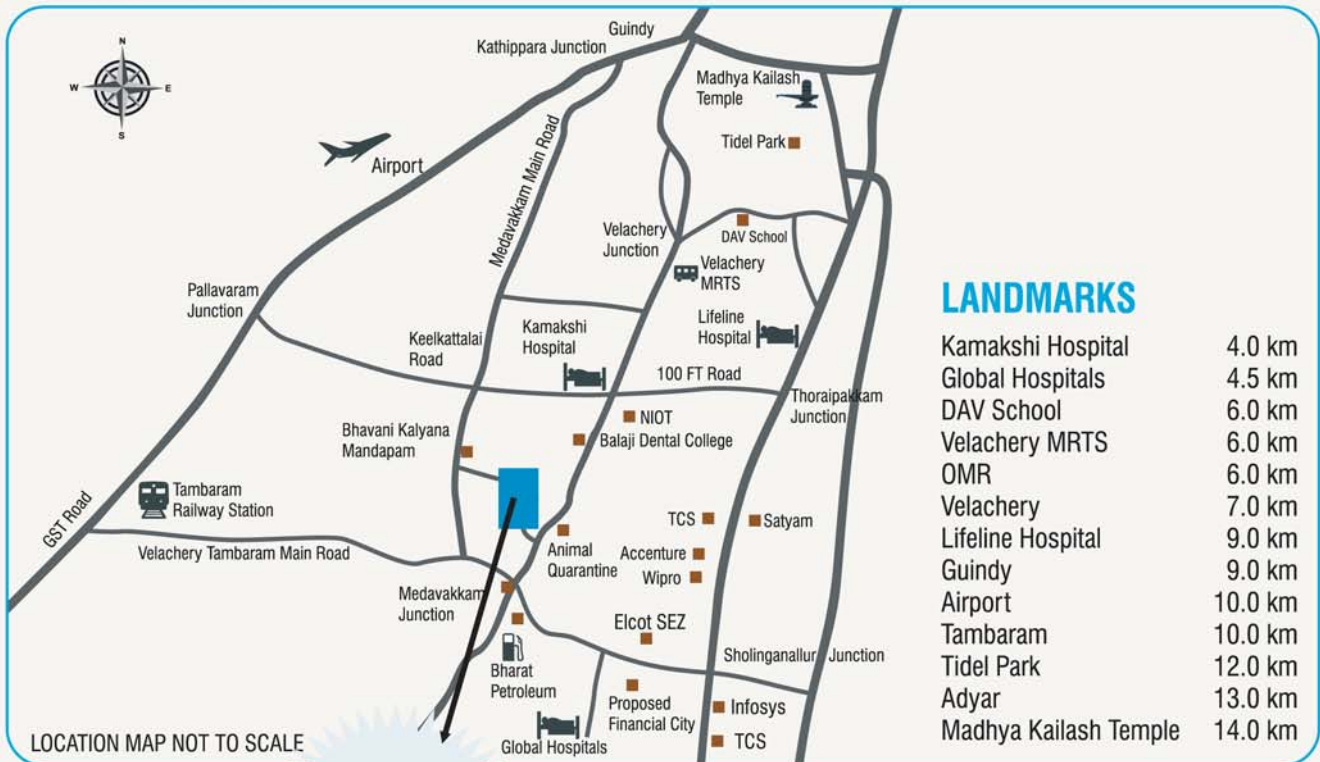


4 BHK - 2710 Sq. Ft.

PURAVANKARA



LOCATION MAP



PURVA
windermere
AN ELITE ENCLAVE

IN YOUR NEIGHBOURHOOD

Nearby Educational Institutes

Apple Kids | Global Kids | Christ the King School | Zigma Matriculation School | BS Matriculation School | St. Joseph's Matriculation School | DAV School | PSBB Millennium | Headstart | Bharathi Vidyalaya | Boaz Matriculation | Magdalene Matriculation | PRINCE Shri Venkateshwara Padmavathy Engineering College | PRINCE Dr. K. Vasudevan College of Engineering and Technology | Quaid-E-Milleth College For Men | New Prince Sri Bhavani Arts & Science College | Bharani Swathi College of Physiotherapy | Bharani Swathi College of Arts and Science | Balaji Dental College | Jerusalem College of Arts and Science

Nearby Hospitals

Kamakshi Hospital | Lifeline Hospital | Global Hospitals

Nearby Shopping Centres

City Super Market | Nilgris | More | Reliance Fresh | Sekar Stores | Food world | Ambal Stores | Hot Breads | Gupta Bhavan | Shanmugam stores

Nearby Companies

Satyam Computer Services | HCL Technologies | Tata Consultancy Services | Accenture India | TECCI Park | Wipro Technologies | Cognizant Technology Solutions | Scope International | Photon Infotech | Polaris Software Lab | Infosys | Siemens | Ford | Sutherland

Nearby Hotels, Resorts, Dhabas and Eateries

Cafè Coffee Day | Dominos | Asiana Hotel

On-going projects across India

Purva Swanlake
OMR,
Chennai

Purva Bluemont
Singanallur, Trichy Road,
Coimbatore

Purva Skywood
Off Sarjapur Road,
Bengaluru

Purva Venezia
Yelahanka,
Bengaluru

Purva Midtown Residences
Off Old Madras Road,
Bengaluru

Purva Atria
RMV IInd Stage,
Bengaluru

Purva Atria Platina
RMV IInd Stage,
Bengaluru

Purva Highland
Off Kanakapura Road,
Bengaluru

Purva Season
C.V. Raman Nagar,
Bengaluru

Purva Oceana
Marine Drive,
Kochi

Purva Eternity
Kakkanad,
Kochi

Purva GrandBay
Marine Drive,
Kochi

Purva Moonreach
On Seaport-Airport Road,
Kochi

Coimbatore

Call: +91-422- 44 55 555

E-mail: coimbatoresales@puravankara.com

Bengaluru

Call: +91-80- 44 55 55 55

E-mail: sales@puravankara.com

Kochi

Call: +91-484- 44 55 555

E-mail: saleskochi@puravankara.com

Dubai

Call: +971 43595818

E-mail: dubaisales@puravankara.com

Saudi Arabia

Call: 00966 508520407

E-mail: ksa@puravankara.com

PURAVANKARA



The pioneers of community living!

ON CALL 24X7

+ 91 44 44 55 55 55

Any project. Any time. Any place.

Email: chennaisales@puravankara.com Website: www.puravankara.com

Corporate Office: Puravankara Projects Limited, 130/1, Ulsoor Road, Bengaluru - 560 042.

Regional Office: No.7, LVR Center, Ground Floor, Seshadri Road, Alwarpet, Chennai - 600 018.

Site Address: Surya Nagar, After Pallikaranai Govt High School, Velachery-Tambaram Main Road, Chennai - 600 100.

Trustee Partner: IL&FS Trust Company Limited. Loans available from all leading banks.

This is a copyright material for only Puravankara Projects Limited



Scan this QR code
to know more about
Puravankara

CREDAI
CHENNAI