



Pearl
Regency
ANDHERI (W)
LIVING MADE BETTER!

Artists' Impression

Connectivity



- ▶ Andheri Railway Station - 5 min.#
- ▶ Andheri Metro Station - 5 min.#
- ▶ International Airport - 30 min.#

EDUCATIONAL INSTITUTES

- ▶ Bombay Cambridge School
- ▶ Wadia High School
- ▶ Orchids The International School
- ▶ Billabong High International School
- ▶ St. Mary's High School
- ▶ Bhavans College
- ▶ Mithibai College
- ▶ N M College

HOTELS

- ▶ Svenska Design Hotels
- ▶ The Empressa Hotel

HOSPITALS

- ▶ Kokilaben Dhirubhai Ambani Hospital
- ▶ Bellevue Multispeciality Hospital
- ▶ Criticare Asia Multispeciality Hospital

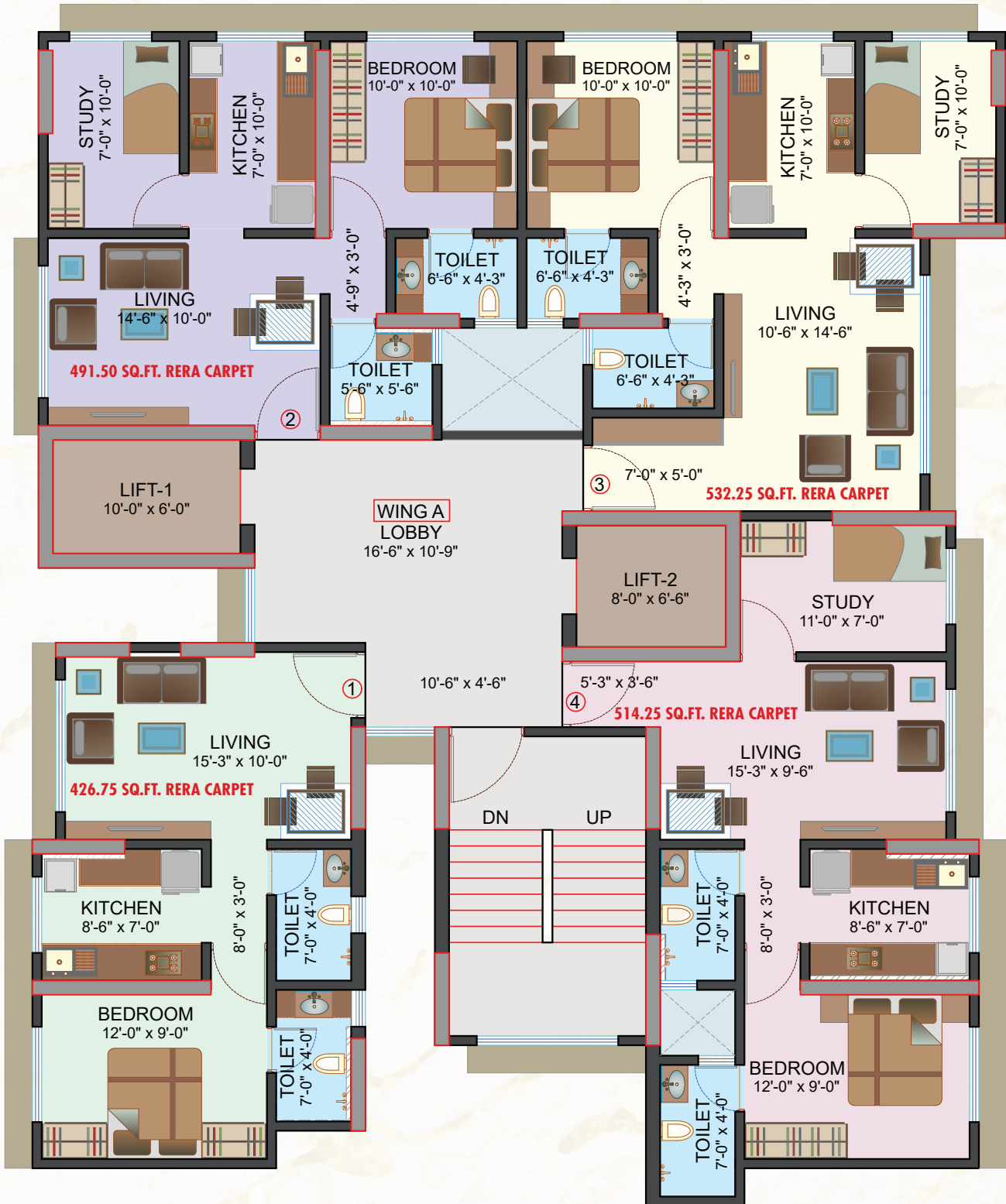
SHOPPING & ENTERTAINMENT

- ▶ Infiniti Mall, Andheri West
- ▶ Citi Mall
- ▶ Shoppers Stop
- ▶ Arasa Shopping Centre

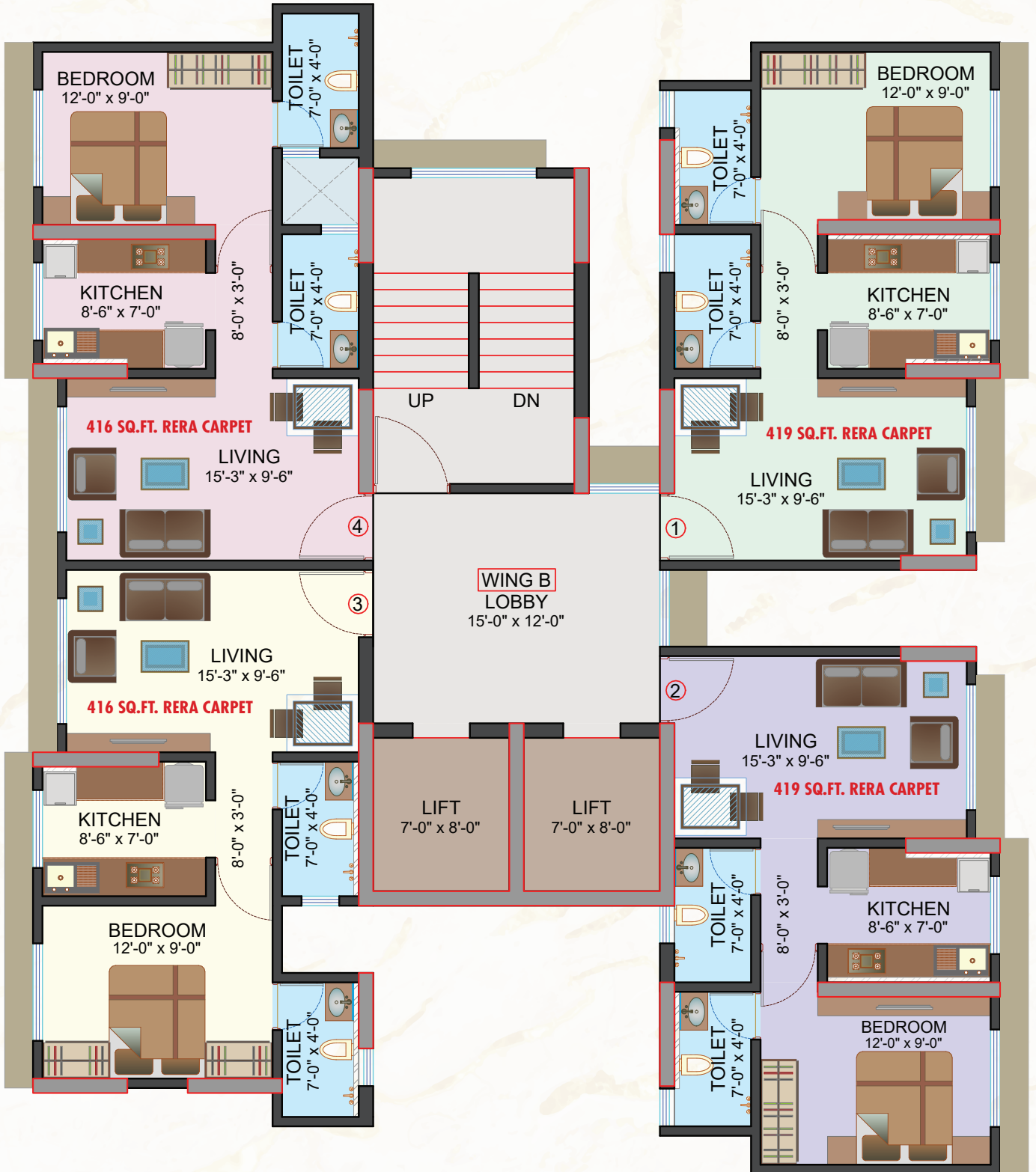
Location Map



Typical Floor Plan - A Wing



Typical Floor Plan - B Wing



Typical Floor Plan - C Wing



Project Amenities



Actual images at site

Project Highlights

- ▶ Exclusive Building Elevation
- ▶ High Speed Branded 7 Elevators & 3 Staircases
- ▶ Grand Decorative Entrance Lobby
- ▶ Fire Protection Systems & Rain Water Harvesting
- ▶ Earthquake Resistant Structure
- ▶ Quality Sanitary Ware & CP Fittings
- ▶ Vitrified Flooring In Living Room, Kitchen & Bedroom
- ▶ Modular Kitchen
- ▶ Stainless Steel Kitchen Sink
- ▶ Gymnasium
- ▶ Jacuzzi
- ▶ Steam Room



**Chandiwala
Enterprises**

222 - A, 1st Floor, A-1 Moonaz
Arcade, Opp. Post Office, S.V. Road,
Andheri (West), Mumbai - 400058.

**Pearl
Regency**
ANDHERI (W)
LIVING MADE BETTER!

Site Address: Chandiwala Compound, Behind
Reliance Digital, Off. S.V. Road, Andheri (W),
Mumbai 400 058 | Call: 90042 19999



The project has been registered via MahaRERA registration number: P51800029784 & P51800045214

Disclaimer: The information, layout, pictures etc. shown/contained in this brochure are indicative only. The Builder/Developer shall not be liable, responsible obligated and/or required to provide any and/or all such amenities, specification etc. as contained in this brochure. All plans drawings, information, amenities, layouts etc. are subject to approval from MCGM and other concerned authorities. The Builder/Developer shall have irrevocable and unconditional right to change, delete, substitute, add, amend etc. the said plans, drawings, information, specifications, amenities, layout etc. in such manner as the Builder/Developer may deem fit. No right of any nature whatsoever shall be construed and/or deemed to have accrued in favour of any person and/or purchaser of the premises from or by virtue of this brochure. Government taxes may vary as per discretion.